

# **SRC ENERGY**

**WELD COUNTY (NAD83, TRUE NORTH)**

**6N-66W-06 GOLDEN EAGLE 1-6 PAD**

**GOLDEN EAGLE 7N-1C-M**

**Wellbore #1**

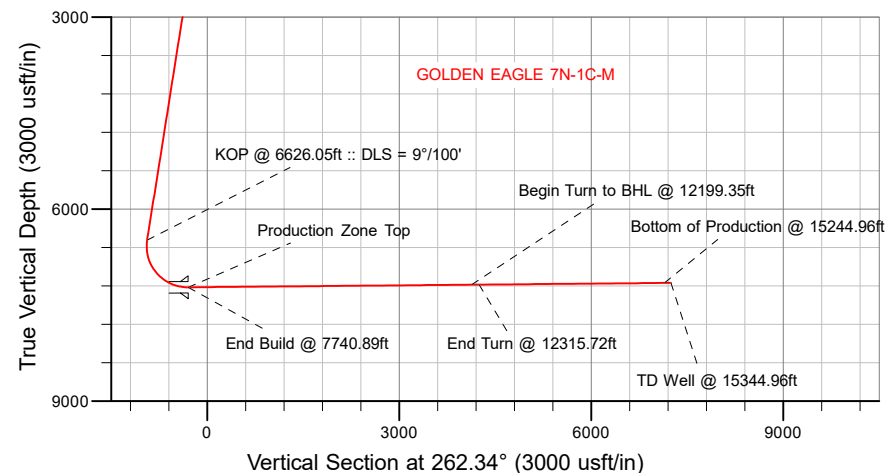
**Plan: Design #1**

## **Standard Planning Report**

**13 December, 2018**

# SRC ENERGY

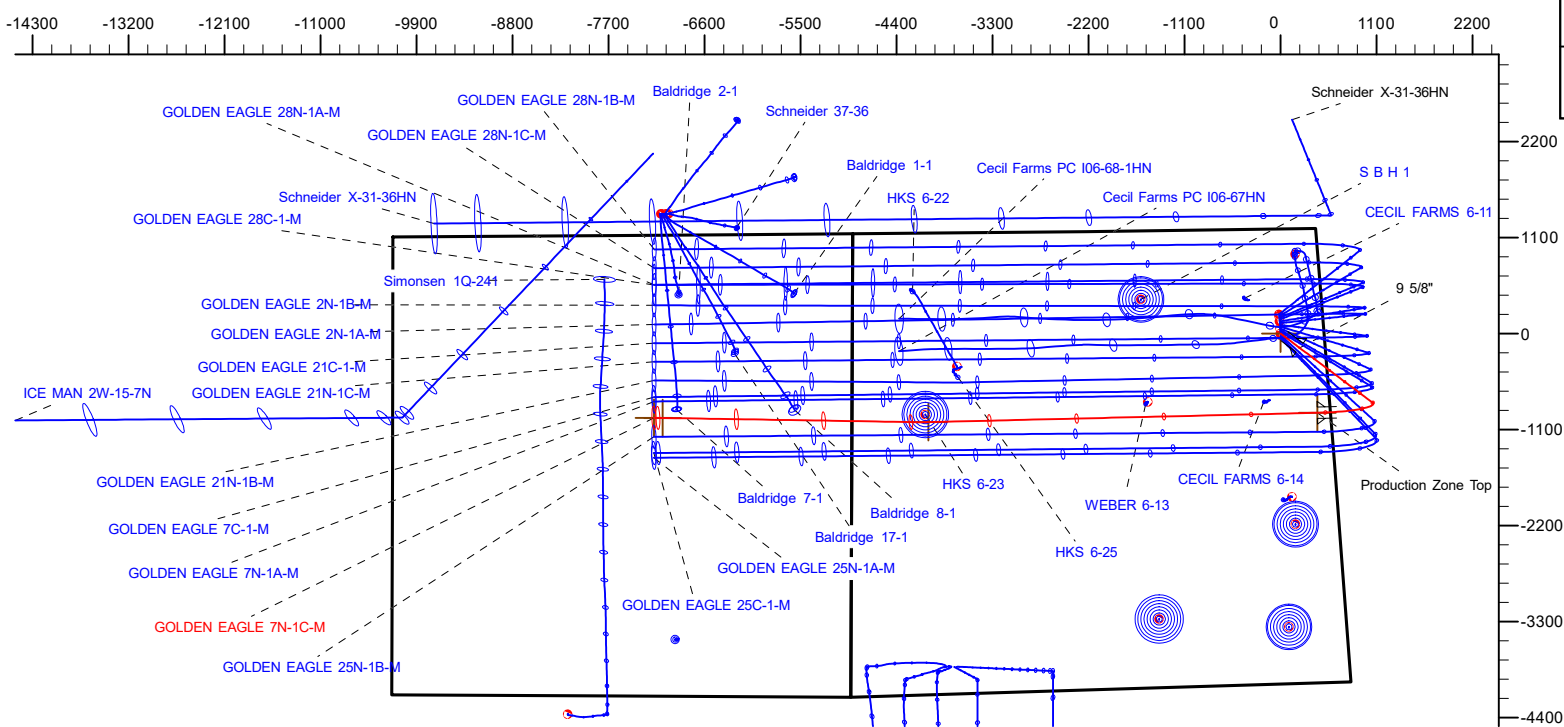
CASING DETAILS		
TVD	MD	Name
1800.00	1827.46	9 5/8"
7222.00	7740.89	Production Zone Top



SECTION DETAILS										
Sec	MD	Inc	Azi	TVD	+N/-S	+E/-W	Dleg	TFace	VSect	Target
1	0.00	0.00	0.00	0.00	0.00	0.00	0.00	0.00	0.00	
2	260.00	0.00	0.00	260.00	0.00	0.00	0.00	0.00	0.00	
3	887.50	12.55	126.90	882.49	-41.10	54.74	2.00	126.90	-48.77	
4	6626.05	12.55	126.90	6483.93	-789.79	1051.90	0.00	0.00	-937.29	
5	7740.89	90.52	268.62	7222.00	-907.72	421.55	9.00	140.97	-296.85	
6	12199.35	90.52	268.62	7181.60	-1015.00	-4035.44	0.00	0.00	4134.69	GOLDEN EAGLE 7N-1C-M_target
7	12315.72	90.52	270.95	7180.55	-1015.44	-4151.80	2.00	89.99	4250.07	
8	15244.96	90.52	270.95	7154.00	-966.94	-7080.51	0.00	0.00	7146.21	GOLDEN EAGLE 7N-1C-M_BPZ
9	15344.96	90.52	270.95	7153.09	-965.28	-7180.49	0.00	0.00	7245.08	

WELLBORE TARGET DETAILS (LAT/LONG)					
Name	TVD	+N/-S	+E/-W	Latitude	Longitude
GOLDEN EAGLE 7N-1C-M_SHL	0.00	0.00	0.00	40.520338	-104.814580
GOLDEN EAGLE 7N-1C-M_BPZ	7154.00	-966.94	-7080.51	40.517681	-104.840047
GOLDEN EAGLE 7N-1C-M_BHL	7153.09	-965.28	-7180.49	40.517685	-104.840407

<b>SHL</b>	<b>LP</b>	<b>BPZ</b>	<b>BHL</b>
<b>1199' FNL</b>	<b>2113' FNL</b>	<b>2095' FNL</b>	<b>2095' FNL</b>
<b>498' FEL</b>	<b>150' FEL</b>	<b>2170' FEL</b>	<b>2270' FEL</b>
	<b>40.517844° Lat</b>		
	<b>-104.813063° Long</b>		
			West(-)/East(+) (2200 usft)



WELL DETAILS: GOLDEN EAGLE 7N-1C-M
GL = 4873'
RKB = 4' @ 4877.00usft (IKON 12)
Plan: Design #1 (GOLDEN EAGLE 7N-1C-M/Wellbore #1)
Date: 12/13/2018

**T**  
**M** Azimuths to True North  
 Magnetic North: 8.09°  
 Magnetic Field  
 Strength: 52279.3snT  
 Dip Angle: 66.90°  
 Date: 12/12/2018  
 Model: IGRF2015

# Hewlett-Packard

## Planning Report

<b>Database:</b>	EDM 5000.14 Single User Db	<b>Local Co-ordinate Reference:</b>	Well GOLDEN EAGLE 7N-1C-M
<b>Company:</b>	SRC ENERGY	<b>TVD Reference:</b>	RKB = 4' @ 4877.00usft (IKON 12)
<b>Project:</b>	WELD COUNTY (NAD83, TRUE NORTH)	<b>MD Reference:</b>	RKB = 4' @ 4877.00usft (IKON 12)
<b>Site:</b>	6N-66W-06 GOLDEN EAGLE 1-6 PAD	<b>North Reference:</b>	True
<b>Well:</b>	GOLDEN EAGLE 7N-1C-M	<b>Survey Calculation Method:</b>	Minimum Curvature
<b>Wellbore:</b>	Wellbore #1		
<b>Design:</b>	Design #1		

<b>Project</b>	WELD COUNTY (NAD83, TRUE NORTH)		
<b>Map System:</b>	US State Plane 1983	<b>System Datum:</b>	Mean Sea Level
<b>Geo Datum:</b>	North American Datum 1983		
<b>Map Zone:</b>	Colorado Northern Zone		

Site		6N-66W-06 GOLDEN EAGLE 1-6 PAD			
Site Position:		Northing:	1,433,355.39 usft	Latitude:	40.520940
From:	Lat/Long	Easting:	3,190,536.32 usft	Longitude:	-104.814644
Position Uncertainty:	0.00 usft	Slot Radius:	13-3/16 "	Grid Convergence:	0.44 °

Well	GOLDEN EAGLE 7N-1C-M					
Well Position	+N/-S	-219.32 usft	Northing:	1,433,136.22 usft	Latitude:	40.520338
	+E/-W	17.79 usft	Easting:	3,190,555.81 usft	Longitude:	-104.814580
Position Uncertainty		3.28 usft	Wellhead Elevation:		Ground Level:	4,873.00 usft

<b>Wellbore</b>	Wellbore #1				
<b>Magnetics</b>	<b>Model Name</b>	<b>Sample Date</b>	<b>Declination (°)</b>	<b>Dip Angle (°)</b>	<b>Field Strength (nT)</b>
	IGRF2015	12/12/2018	8.09	66.90	52,279.25852034

<b>Design</b>	Design #1				
<b>Audit Notes:</b>					
<b>Version:</b>		<b>Phase:</b>	PLAN	<b>Tie On Depth:</b>	0.00
<b>Vertical Section:</b>	<b>Depth From (TVD) (usft)</b>	<b>+N/-S (usft)</b>	<b>+E/-W (usft)</b>	<b>Direction (°)</b>	
	0.00	0.00	0.00	262.34	

<b>Plan Survey Tool Program</b>	<b>Date</b>	12/13/2018			
<b>Depth From (usft)</b>	<b>Depth To (usft)</b>	<b>Survey (Wellbore)</b>	<b>Tool Name</b>	<b>Remarks</b>	
1	0.00	1,800.00	Design #1 (Wellbore #1)	SRC Energy_ISCWSA REV 2	
				Fixed:v2:crustal field declinatio	
2	1,800.00	15,344.96	Design #1 (Wellbore #1)	SRC Energy_ISCWSA REV 2	
				Fixed:v2:Rockies, crustal dec +	

Hewlett-Packard  
Planning Report

Database:	EDM 5000.14 Single User Db	Local Co-ordinate Reference:	Well GOLDEN EAGLE 7N-1C-M
Company:	SRC ENERGY	TVD Reference:	RKB = 4' @ 4877.00usft (IKON 12)
Project:	WELD COUNTY (NAD83, TRUE NORTH)	MD Reference:	RKB = 4' @ 4877.00usft (IKON 12)
Site:	6N-66W-06 GOLDEN EAGLE 1-6 PAD	North Reference:	True
Well:	GOLDEN EAGLE 7N-1C-M	Survey Calculation Method:	Minimum Curvature
Wellbore:	Wellbore #1		
Design:	Design #1		

Plan Sections										
Measured Depth (usft)	Inclination (°)	Azimuth (°)	Vertical Depth (usft)	+N/-S (usft)	+E/-W (usft)	Dogleg Rate (°/100usft)	Build Rate (°/100usft)	Turn Rate (°/100usft)	TFO (°)	Target
0.00	0.00	0.00	0.00	0.00	0.00	0.00	0.00	0.00	0.00	
260.00	0.00	0.00	260.00	0.00	0.00	0.00	0.00	0.00	0.00	
887.50	12.55	126.90	882.49	-41.10	54.74	2.00	2.00	0.00	126.90	
6,626.05	12.55	126.90	6,483.93	-789.79	1,051.90	0.00	0.00	0.00	0.00	
7,740.89	90.52	268.62	7,222.00	-907.72	421.55	9.00	6.99	12.71	140.97	
12,199.35	90.52	268.62	7,181.60	-1,015.00	-4,035.44	0.00	0.00	0.00	0.00	GOLDEN EAGLE 7N-
12,315.72	90.52	270.95	7,180.55	-1,015.44	-4,151.80	2.00	0.00	2.00	89.99	
15,244.96	90.52	270.95	7,154.00	-966.94	-7,080.51	0.00	0.00	0.00	0.00	GOLDEN EAGLE 7N-
15,344.96	90.52	270.95	7,153.09	-965.28	-7,180.49	0.00	0.00	0.00	0.00	

# Hewlett-Packard

## Planning Report

<b>Database:</b>	EDM 5000.14 Single User Db	<b>Local Co-ordinate Reference:</b>	Well GOLDEN EAGLE 7N-1C-M
<b>Company:</b>	SRC ENERGY	<b>TVD Reference:</b>	RKB = 4' @ 4877.00usft (IKON 12)
<b>Project:</b>	WELD COUNTY (NAD83, TRUE NORTH)	<b>MD Reference:</b>	RKB = 4' @ 4877.00usft (IKON 12)
<b>Site:</b>	6N-66W-06 GOLDEN EAGLE 1-6 PAD	<b>North Reference:</b>	True
<b>Well:</b>	GOLDEN EAGLE 7N-1C-M	<b>Survey Calculation Method:</b>	Minimum Curvature
<b>Wellbore:</b>	Wellbore #1		
<b>Design:</b>	Design #1		

Planned Survey									
Measured Depth (usft)	Inclination (°)	Azimuth (°)	Vertical Depth (usft)	+N/-S (usft)	+E/-W (usft)	Vertical Section (usft)	Dogleg Rate (°/100usft)	Build Rate (°/100usft)	Turn Rate (°/100usft)
0.00	0.00	0.00	0.00	0.00	0.00	0.00	0.00	0.00	0.00
100.00	0.00	0.00	100.00	0.00	0.00	0.00	0.00	0.00	0.00
200.00	0.00	0.00	200.00	0.00	0.00	0.00	0.00	0.00	0.00
260.00	0.00	0.00	260.00	0.00	0.00	0.00	0.00	0.00	0.00
Begin Nudge @ 260.00ft									
300.00	0.80	126.90	300.00	-0.17	0.22	-0.20	2.00	2.00	0.00
400.00	2.80	126.90	399.94	-2.05	2.74	-2.44	2.00	2.00	0.00
500.00	4.80	126.90	499.72	-6.03	8.03	-7.16	2.00	2.00	0.00
600.00	6.80	126.90	599.20	-12.10	16.12	-14.36	2.00	2.00	0.00
700.00	8.80	126.90	698.27	-20.25	26.97	-24.03	2.00	2.00	0.00
800.00	10.80	126.90	796.81	-30.47	40.58	-36.16	2.00	2.00	0.00
887.50	12.55	126.90	882.49	-41.10	54.74	-48.77	2.00	2.00	0.00
Hold Tangent @ 887.50ft									
900.00	12.55	126.90	894.70	-42.73	56.91	-50.71	0.00	0.00	0.00
1,000.00	12.55	126.90	992.31	-55.78	74.29	-66.19	0.00	0.00	0.00
1,100.00	12.55	126.90	1,089.92	-68.82	91.66	-81.68	0.00	0.00	0.00
1,200.00	12.55	126.90	1,187.53	-81.87	109.04	-97.16	0.00	0.00	0.00
1,300.00	12.55	126.90	1,285.14	-94.92	126.42	-112.64	0.00	0.00	0.00
1,400.00	12.55	126.90	1,382.75	-107.96	143.79	-128.13	0.00	0.00	0.00
1,500.00	12.55	126.90	1,480.36	-121.01	161.17	-143.61	0.00	0.00	0.00
1,600.00	12.55	126.90	1,577.97	-134.06	178.55	-159.09	0.00	0.00	0.00
1,700.00	12.55	126.90	1,675.58	-147.10	195.92	-174.58	0.00	0.00	0.00
1,800.00	12.55	126.90	1,773.19	-160.15	213.30	-190.06	0.00	0.00	0.00
1,827.46	12.55	126.90	1,800.00	-163.73	218.07	-194.31	0.00	0.00	0.00
9 5/8"									
1,900.00	12.55	126.90	1,870.80	-173.20	230.67	-205.54	0.00	0.00	0.00
2,000.00	12.55	126.90	1,968.41	-186.24	248.05	-221.03	0.00	0.00	0.00
2,100.00	12.55	126.90	2,066.02	-199.29	265.43	-236.51	0.00	0.00	0.00
2,200.00	12.55	126.90	2,163.63	-212.34	282.80	-251.99	0.00	0.00	0.00
2,300.00	12.55	126.90	2,261.25	-225.38	300.18	-267.48	0.00	0.00	0.00
2,400.00	12.55	126.90	2,358.86	-238.43	317.56	-282.96	0.00	0.00	0.00
2,500.00	12.55	126.90	2,456.47	-251.48	334.93	-298.44	0.00	0.00	0.00
2,600.00	12.55	126.90	2,554.08	-264.52	352.31	-313.93	0.00	0.00	0.00
2,700.00	12.55	126.90	2,651.69	-277.57	369.69	-329.41	0.00	0.00	0.00
2,800.00	12.55	126.90	2,749.30	-290.61	387.06	-344.89	0.00	0.00	0.00
2,900.00	12.55	126.90	2,846.91	-303.66	404.44	-360.38	0.00	0.00	0.00
3,000.00	12.55	126.90	2,944.52	-316.71	421.82	-375.86	0.00	0.00	0.00
3,100.00	12.55	126.90	3,042.13	-329.75	439.19	-391.34	0.00	0.00	0.00
3,200.00	12.55	126.90	3,139.74	-342.80	456.57	-406.83	0.00	0.00	0.00
3,300.00	12.55	126.90	3,237.35	-355.85	473.95	-422.31	0.00	0.00	0.00
3,400.00	12.55	126.90	3,334.96	-368.89	491.32	-437.79	0.00	0.00	0.00
3,500.00	12.55	126.90	3,432.57	-381.94	508.70	-453.28	0.00	0.00	0.00
3,600.00	12.55	126.90	3,530.18	-394.99	526.07	-468.76	0.00	0.00	0.00
3,700.00	12.55	126.90	3,627.79	-408.03	543.45	-484.24	0.00	0.00	0.00
3,800.00	12.55	126.90	3,725.41	-421.08	560.83	-499.73	0.00	0.00	0.00
3,900.00	12.55	126.90	3,823.02	-434.13	578.20	-515.21	0.00	0.00	0.00
4,000.00	12.55	126.90	3,920.63	-447.17	595.58	-530.69	0.00	0.00	0.00
4,100.00	12.55	126.90	4,018.24	-460.22	612.96	-546.18	0.00	0.00	0.00
4,200.00	12.55	126.90	4,115.85	-473.27	630.33	-561.66	0.00	0.00	0.00
4,300.00	12.55	126.90	4,213.46	-486.31	647.71	-577.14	0.00	0.00	0.00
4,400.00	12.55	126.90	4,311.07	-499.36	665.09	-592.63	0.00	0.00	0.00
4,500.00	12.55	126.90	4,408.68	-512.41	682.46	-608.11	0.00	0.00	0.00
4,600.00	12.55	126.90	4,506.29	-525.45	699.84	-623.59	0.00	0.00	0.00

# Hewlett-Packard

## Planning Report

<b>Database:</b>	EDM 5000.14 Single User Db	<b>Local Co-ordinate Reference:</b>	Well GOLDEN EAGLE 7N-1C-M
<b>Company:</b>	SRC ENERGY	<b>TVD Reference:</b>	RKB = 4' @ 4877.00usft (IKON 12)
<b>Project:</b>	WELD COUNTY (NAD83, TRUE NORTH)	<b>MD Reference:</b>	RKB = 4' @ 4877.00usft (IKON 12)
<b>Site:</b>	6N-66W-06 GOLDEN EAGLE 1-6 PAD	<b>North Reference:</b>	True
<b>Well:</b>	GOLDEN EAGLE 7N-1C-M	<b>Survey Calculation Method:</b>	Minimum Curvature
<b>Wellbore:</b>	Wellbore #1		
<b>Design:</b>	Design #1		

Planned Survey									
Measured Depth (usft)	Inclination (°)	Azimuth (°)	Vertical Depth (usft)	+N/-S (usft)	+E/-W (usft)	Vertical Section (usft)	Dogleg Rate (°/100usft)	Build Rate (°/100usft)	Turn Rate (°/100usft)
4,700.00	12.55	126.90	4,603.90	-538.50	717.22	-639.08	0.00	0.00	0.00
4,800.00	12.55	126.90	4,701.51	-551.55	734.59	-654.56	0.00	0.00	0.00
4,900.00	12.55	126.90	4,799.12	-564.59	751.97	-670.04	0.00	0.00	0.00
5,000.00	12.55	126.90	4,896.73	-577.64	769.34	-685.53	0.00	0.00	0.00
5,100.00	12.55	126.90	4,994.34	-590.69	786.72	-701.01	0.00	0.00	0.00
5,200.00	12.55	126.90	5,091.95	-603.73	804.10	-716.49	0.00	0.00	0.00
5,300.00	12.55	126.90	5,189.57	-616.78	821.47	-731.98	0.00	0.00	0.00
5,400.00	12.55	126.90	5,287.18	-629.83	838.85	-747.46	0.00	0.00	0.00
5,500.00	12.55	126.90	5,384.79	-642.87	856.23	-762.94	0.00	0.00	0.00
5,600.00	12.55	126.90	5,482.40	-655.92	873.60	-778.43	0.00	0.00	0.00
5,700.00	12.55	126.90	5,580.01	-668.97	890.98	-793.91	0.00	0.00	0.00
5,800.00	12.55	126.90	5,677.62	-682.01	908.36	-809.39	0.00	0.00	0.00
5,900.00	12.55	126.90	5,775.23	-695.06	925.73	-824.88	0.00	0.00	0.00
6,000.00	12.55	126.90	5,872.84	-708.11	943.11	-840.36	0.00	0.00	0.00
6,100.00	12.55	126.90	5,970.45	-721.15	960.49	-855.84	0.00	0.00	0.00
6,200.00	12.55	126.90	6,068.06	-734.20	977.86	-871.33	0.00	0.00	0.00
6,300.00	12.55	126.90	6,165.67	-747.25	995.24	-886.81	0.00	0.00	0.00
6,400.00	12.55	126.90	6,263.28	-760.29	1,012.62	-902.29	0.00	0.00	0.00
6,500.00	12.55	126.90	6,360.89	-773.34	1,029.99	-917.78	0.00	0.00	0.00
6,600.00	12.55	126.90	6,458.50	-786.39	1,047.37	-933.26	0.00	0.00	0.00
6,626.05	12.55	126.90	6,483.93	-789.79	1,051.90	-937.29	0.00	0.00	0.00
<b>KOP @ 6626.05ft :: DLS = 9°/100'</b>									
6,700.00	8.47	156.60	6,556.68	-799.62	1,060.49	-944.50	9.00	-5.52	40.16
6,800.00	9.79	215.35	6,655.61	-813.34	1,058.50	-940.70	9.00	1.32	58.75
6,900.00	16.76	241.24	6,752.96	-827.23	1,040.90	-921.41	9.00	6.97	25.90
7,000.00	25.04	251.35	6,846.33	-840.96	1,008.15	-887.12	9.00	8.28	10.10
7,100.00	33.67	256.58	6,933.42	-854.19	961.04	-838.67	9.00	8.63	5.23
7,200.00	42.44	259.86	7,012.09	-866.59	900.74	-777.25	9.00	8.77	3.28
7,300.00	51.28	262.19	7,080.41	-877.85	828.73	-704.38	9.00	8.84	2.33
7,400.00	60.16	264.00	7,136.68	-887.70	746.78	-621.85	9.00	8.88	1.81
7,500.00	69.05	265.52	7,179.52	-895.90	656.91	-531.69	9.00	8.90	1.51
7,600.00	77.96	266.86	7,207.89	-902.23	561.33	-436.12	9.00	8.91	1.34
7,700.00	86.87	268.12	7,221.07	-906.56	462.40	-337.50	9.00	8.91	1.26
7,740.89	90.52	268.62	7,222.00	-907.72	421.55	-296.85	9.00	8.92	1.23
<b>End Build @ 7740.89ft - Production Zone Top</b>									
7,800.00	90.52	268.62	7,221.47	-909.15	362.46	-238.10	0.00	0.00	0.00
7,900.00	90.52	268.62	7,220.56	-911.55	262.49	-138.70	0.00	0.00	0.00
8,000.00	90.52	268.62	7,219.65	-913.96	162.52	-39.30	0.00	0.00	0.00
8,100.00	90.52	268.62	7,218.75	-916.36	62.55	60.09	0.00	0.00	0.00
8,200.00	90.52	268.62	7,217.84	-918.77	-37.41	159.49	0.00	0.00	0.00
8,300.00	90.52	268.62	7,216.94	-921.18	-137.38	258.89	0.00	0.00	0.00
8,400.00	90.52	268.62	7,216.03	-923.58	-237.35	358.28	0.00	0.00	0.00
8,500.00	90.52	268.62	7,215.12	-925.99	-337.31	457.68	0.00	0.00	0.00
8,600.00	90.52	268.62	7,214.22	-928.40	-437.28	557.07	0.00	0.00	0.00
8,700.00	90.52	268.62	7,213.31	-930.80	-537.25	656.47	0.00	0.00	0.00
8,800.00	90.52	268.62	7,212.40	-933.21	-637.21	755.87	0.00	0.00	0.00
8,900.00	90.52	268.62	7,211.50	-935.61	-737.18	855.26	0.00	0.00	0.00
9,000.00	90.52	268.62	7,210.59	-938.02	-837.15	954.66	0.00	0.00	0.00
9,100.00	90.52	268.62	7,209.69	-940.43	-937.11	1,054.06	0.00	0.00	0.00
9,200.00	90.52	268.62	7,208.78	-942.83	-1,037.08	1,153.45	0.00	0.00	0.00
9,300.00	90.52	268.62	7,207.87	-945.24	-1,137.05	1,252.85	0.00	0.00	0.00
9,400.00	90.52	268.62	7,206.97	-947.64	-1,237.02	1,352.24	0.00	0.00	0.00
9,500.00	90.52	268.62	7,206.06	-950.05	-1,336.98	1,451.64	0.00	0.00	0.00
9,600.00	90.52	268.62	7,205.16	-952.46	-1,436.95	1,551.04	0.00	0.00	0.00

# Hewlett-Packard

## Planning Report

<b>Database:</b>	EDM 5000.14 Single User Db	<b>Local Co-ordinate Reference:</b>	Well GOLDEN EAGLE 7N-1C-M
<b>Company:</b>	SRC ENERGY	<b>TVD Reference:</b>	RKB = 4' @ 4877.00usft (IKON 12)
<b>Project:</b>	WELD COUNTY (NAD83, TRUE NORTH)	<b>MD Reference:</b>	RKB = 4' @ 4877.00usft (IKON 12)
<b>Site:</b>	6N-66W-06 GOLDEN EAGLE 1-6 PAD	<b>North Reference:</b>	True
<b>Well:</b>	GOLDEN EAGLE 7N-1C-M	<b>Survey Calculation Method:</b>	Minimum Curvature
<b>Wellbore:</b>	Wellbore #1		
<b>Design:</b>	Design #1		

Planned Survey									
Measured Depth (usft)	Inclination (°)	Azimuth (°)	Vertical Depth (usft)	+N/-S (usft)	+E/-W (usft)	Vertical Section (usft)	Dogleg Rate (°/100usft)	Build Rate (°/100usft)	Turn Rate (°/100usft)
9,700.00	90.52	268.62	7,204.25	-954.86	-1,536.92	1,650.43	0.00	0.00	0.00
9,800.00	90.52	268.62	7,203.34	-957.27	-1,636.88	1,749.83	0.00	0.00	0.00
9,900.00	90.52	268.62	7,202.44	-959.67	-1,736.85	1,849.23	0.00	0.00	0.00
10,000.00	90.52	268.62	7,201.53	-962.08	-1,836.82	1,948.62	0.00	0.00	0.00
10,100.00	90.52	268.62	7,200.62	-964.49	-1,936.78	2,048.02	0.00	0.00	0.00
10,200.00	90.52	268.62	7,199.72	-966.89	-2,036.75	2,147.41	0.00	0.00	0.00
10,300.00	90.52	268.62	7,198.81	-969.30	-2,136.72	2,246.81	0.00	0.00	0.00
10,400.00	90.52	268.62	7,197.91	-971.71	-2,236.68	2,346.21	0.00	0.00	0.00
10,500.00	90.52	268.62	7,197.00	-974.11	-2,336.65	2,445.60	0.00	0.00	0.00
10,600.00	90.52	268.62	7,196.09	-976.52	-2,436.62	2,545.00	0.00	0.00	0.00
10,700.00	90.52	268.62	7,195.19	-978.92	-2,536.59	2,644.40	0.00	0.00	0.00
10,800.00	90.52	268.62	7,194.28	-981.33	-2,636.55	2,743.79	0.00	0.00	0.00
10,900.00	90.52	268.62	7,193.37	-983.74	-2,736.52	2,843.19	0.00	0.00	0.00
11,000.00	90.52	268.62	7,192.47	-986.14	-2,836.49	2,942.59	0.00	0.00	0.00
11,100.00	90.52	268.62	7,191.56	-988.55	-2,936.45	3,041.98	0.00	0.00	0.00
11,200.00	90.52	268.62	7,190.66	-990.95	-3,036.42	3,141.38	0.00	0.00	0.00
11,300.00	90.52	268.62	7,189.75	-993.36	-3,136.39	3,240.77	0.00	0.00	0.00
11,400.00	90.52	268.62	7,188.84	-995.77	-3,236.35	3,340.17	0.00	0.00	0.00
11,500.00	90.52	268.62	7,187.94	-998.17	-3,336.32	3,439.57	0.00	0.00	0.00
11,600.00	90.52	268.62	7,187.03	-1,000.58	-3,436.29	3,538.96	0.00	0.00	0.00
11,700.00	90.52	268.62	7,186.13	-1,002.99	-3,536.26	3,638.36	0.00	0.00	0.00
11,800.00	90.52	268.62	7,185.22	-1,005.39	-3,636.22	3,737.76	0.00	0.00	0.00
11,900.00	90.52	268.62	7,184.31	-1,007.80	-3,736.19	3,837.15	0.00	0.00	0.00
12,000.00	90.52	268.62	7,183.41	-1,010.20	-3,836.16	3,936.55	0.00	0.00	0.00
12,100.00	90.52	268.62	7,182.50	-1,012.61	-3,936.12	4,035.94	0.00	0.00	0.00
12,199.35	90.52	268.62	7,181.60	-1,015.00	-4,035.44	4,134.69	0.00	0.00	0.00
Begin Turn to BHL @ 12199.35ft									
12,200.00	90.52	268.63	7,181.59	-1,015.02	-4,036.09	4,135.34	2.00	0.00	2.00
12,300.00	90.52	270.63	7,180.69	-1,015.65	-4,136.08	4,234.52	2.00	0.00	2.00
12,315.72	90.52	270.95	7,180.55	-1,015.44	-4,151.80	4,250.07	2.00	0.00	2.00
End Turn @ 12315.72ft									
12,400.00	90.52	270.95	7,179.78	-1,014.04	-4,236.06	4,333.40	0.00	0.00	0.00
12,500.00	90.52	270.95	7,178.88	-1,012.39	-4,336.04	4,432.27	0.00	0.00	0.00
12,600.00	90.52	270.95	7,177.97	-1,010.73	-4,436.03	4,531.14	0.00	0.00	0.00
12,700.00	90.52	270.95	7,177.06	-1,009.07	-4,536.01	4,630.01	0.00	0.00	0.00
12,800.00	90.52	270.95	7,176.16	-1,007.42	-4,635.99	4,728.88	0.00	0.00	0.00
12,900.00	90.52	270.95	7,175.25	-1,005.76	-4,735.97	4,827.75	0.00	0.00	0.00
13,000.00	90.52	270.95	7,174.34	-1,004.11	-4,835.95	4,926.62	0.00	0.00	0.00
13,100.00	90.52	270.95	7,173.44	-1,002.45	-4,935.94	5,025.49	0.00	0.00	0.00
13,200.00	90.52	270.95	7,172.53	-1,000.80	-5,035.92	5,124.36	0.00	0.00	0.00
13,300.00	90.52	270.95	7,171.63	-999.14	-5,135.90	5,223.23	0.00	0.00	0.00
13,400.00	90.52	270.95	7,170.72	-997.49	-5,235.88	5,322.10	0.00	0.00	0.00
13,500.00	90.52	270.95	7,169.81	-995.83	-5,335.87	5,420.97	0.00	0.00	0.00
13,600.00	90.52	270.95	7,168.91	-994.17	-5,435.85	5,519.84	0.00	0.00	0.00
13,700.00	90.52	270.95	7,168.00	-992.52	-5,535.83	5,618.71	0.00	0.00	0.00
13,800.00	90.52	270.95	7,167.09	-990.86	-5,635.81	5,717.58	0.00	0.00	0.00
13,900.00	90.52	270.95	7,166.19	-989.21	-5,735.79	5,816.45	0.00	0.00	0.00
14,000.00	90.52	270.95	7,165.28	-987.55	-5,835.78	5,915.32	0.00	0.00	0.00
14,100.00	90.52	270.95	7,164.38	-985.90	-5,935.76	6,014.19	0.00	0.00	0.00
14,200.00	90.52	270.95	7,163.47	-984.24	-6,035.74	6,113.06	0.00	0.00	0.00
14,300.00	90.52	270.95	7,162.56	-982.58	-6,135.72	6,211.93	0.00	0.00	0.00
14,400.00	90.52	270.95	7,161.66	-980.93	-6,235.71	6,310.80	0.00	0.00	0.00
14,500.00	90.52	270.95	7,160.75	-979.27	-6,335.69	6,409.67	0.00	0.00	0.00
14,600.00	90.52	270.95	7,159.84	-977.62	-6,435.67	6,508.54	0.00	0.00	0.00

# Hewlett-Packard

## Planning Report

<b>Database:</b>	EDM 5000.14 Single User Db	<b>Local Co-ordinate Reference:</b>	Well GOLDEN EAGLE 7N-1C-M
<b>Company:</b>	SRC ENERGY	<b>TVD Reference:</b>	RKB = 4' @ 4877.00usft (IKON 12)
<b>Project:</b>	WELD COUNTY (NAD83, TRUE NORTH)	<b>MD Reference:</b>	RKB = 4' @ 4877.00usft (IKON 12)
<b>Site:</b>	6N-66W-06 GOLDEN EAGLE 1-6 PAD	<b>North Reference:</b>	True
<b>Well:</b>	GOLDEN EAGLE 7N-1C-M	<b>Survey Calculation Method:</b>	Minimum Curvature
<b>Wellbore:</b>	Wellbore #1		
<b>Design:</b>	Design #1		

Planned Survey										
Measured Depth (usft)	Inclination (°)	Azimuth (°)	Vertical Depth (usft)	+N/-S (usft)	+E/-W (usft)	Vertical Section (usft)	Dogleg Rate (°/100usft)	Build Rate (°/100usft)	Turn Rate (°/100usft)	
14,700.00	90.52	270.95	7,158.94	-975.96	-6,535.65	6,607.41	0.00	0.00	0.00	
14,800.00	90.52	270.95	7,158.03	-974.31	-6,635.63	6,706.29	0.00	0.00	0.00	
14,900.00	90.52	270.95	7,157.13	-972.65	-6,735.62	6,805.16	0.00	0.00	0.00	
15,000.00	90.52	270.95	7,156.22	-970.99	-6,835.60	6,904.03	0.00	0.00	0.00	
15,100.00	90.52	270.95	7,155.31	-969.34	-6,935.58	7,002.90	0.00	0.00	0.00	
15,200.00	90.52	270.95	7,154.41	-967.68	-7,035.56	7,101.77	0.00	0.00	0.00	
15,244.96	90.52	270.95	7,154.00	-966.94	-7,080.51	7,146.21	0.00	0.00	0.00	
Bottom of Production @ 15244.96ft										
15,300.00	90.52	270.95	7,153.50	-966.03	-7,135.54	7,200.64	0.00	0.00	0.00	
15,344.96	90.52	270.95	7,153.09	-965.28	-7,180.49	7,245.08	0.00	0.00	0.00	
TD Well @ 15344.96ft										

Casing Points					
Measured Depth (usft)	Vertical Depth (usft)	Name	Casing Diameter (")	Hole Diameter (")	
1,827.46	1,800.00	9 5/8"	9-5/8	13-1/2	
7,740.89	7,222.00	Production Zone Top	5-1/2	8-1/2	

Plan Annotations					
Measured Depth (usft)	Vertical Depth (usft)	Local Coordinates			
		+N/-S (usft)	+E/-W (usft)	Comment	
260.00	260.00	0.00	0.00	Begin Nudge @ 260.00ft	
887.50	882.49	-41.10	54.74	Hold Tangent @ 887.50ft	
6,626.05	6,483.93	-789.79	1,051.90	KOP @ 6626.05ft :: DLS = 9°/100'	
7,740.89	7,222.00	-907.72	421.55	End Build @ 7740.89ft	
12,199.35	7,181.60	-1,015.00	-4,035.44	Begin Turn to BHL @ 12199.35ft	
12,315.72	7,180.55	-1,015.44	-4,151.80	End Turn @ 12315.72ft	
15,244.96	7,154.00	-966.94	-7,080.51	Bottom of Production @ 15244.96ft	
15,344.96	7,153.09	-965.28	-7,180.49	TD Well @ 15344.96ft	