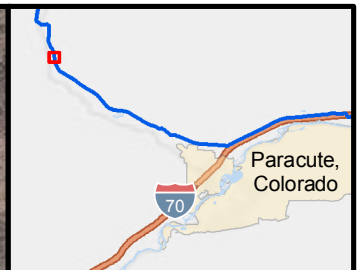
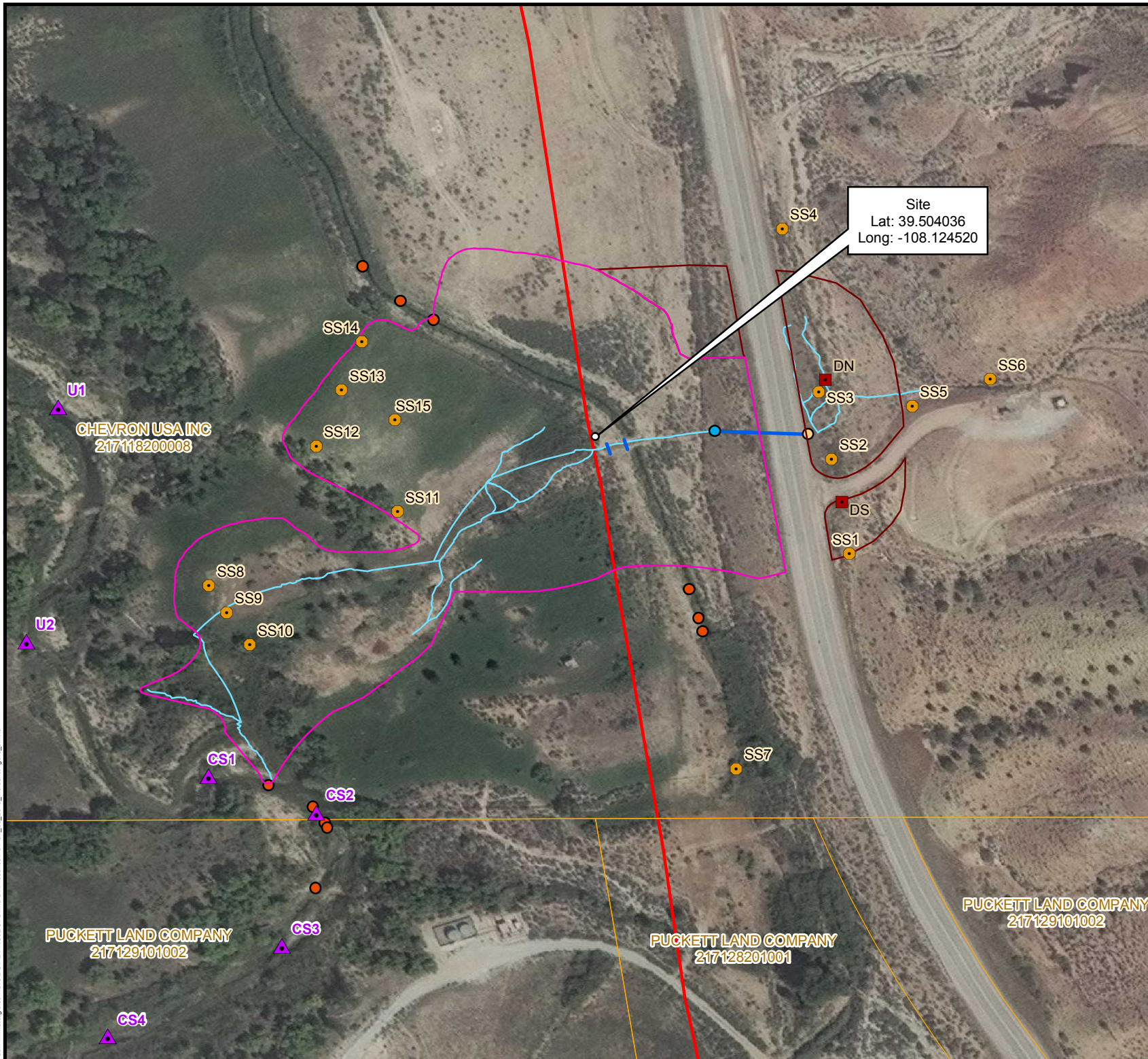


Path: \\wnstlgsfs01\GIS\BUP\PROJECTS\MIDST\Picanceo\PDF01_08_2019_incidentFigure_3.mxd



LEGEND

- ▲ Creek Sample Locations
- Soil Sample Locations
- Ditch Sample Locations
- Waterway Boom
- Culvert Inlet
- Culvert Outlet
- Culvert
- Site Drainage
- Grand Valley 16" Pipeline
- Excavated/Scraped Area
- In-Situ Remediation Area
- Parcels

Williams

**FIGURE 3
INCIDENT SITE
GRAND VALLEY 16" PIPELINE
GARFIELD COUNTY, COLORADO**

Williams Corporate Hdqrs
One Williams Center
Tulsa, OK 74172
Phone: 800-945-5426

0 0.005 0.01 0.02 0.03 0.04 Miles

Disclaimer: This document and its contents, if any, is the property of Williams Corporation. It contains confidential and proprietary information. The disclosure or distribution without written consent is prohibited. Williams makes no warranty or representation, express, implied, or otherwise, as to the accuracy or completeness of the information shown or not shown on this document, and disclaims responsibility for the actions of third parties taken in reliance thereon. For general reference purposes only. DO NOT USE to determine, certify, or verify map features, scale and/or other information.

Created By: KES Date: 1/25/2019