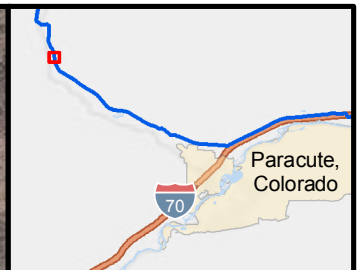
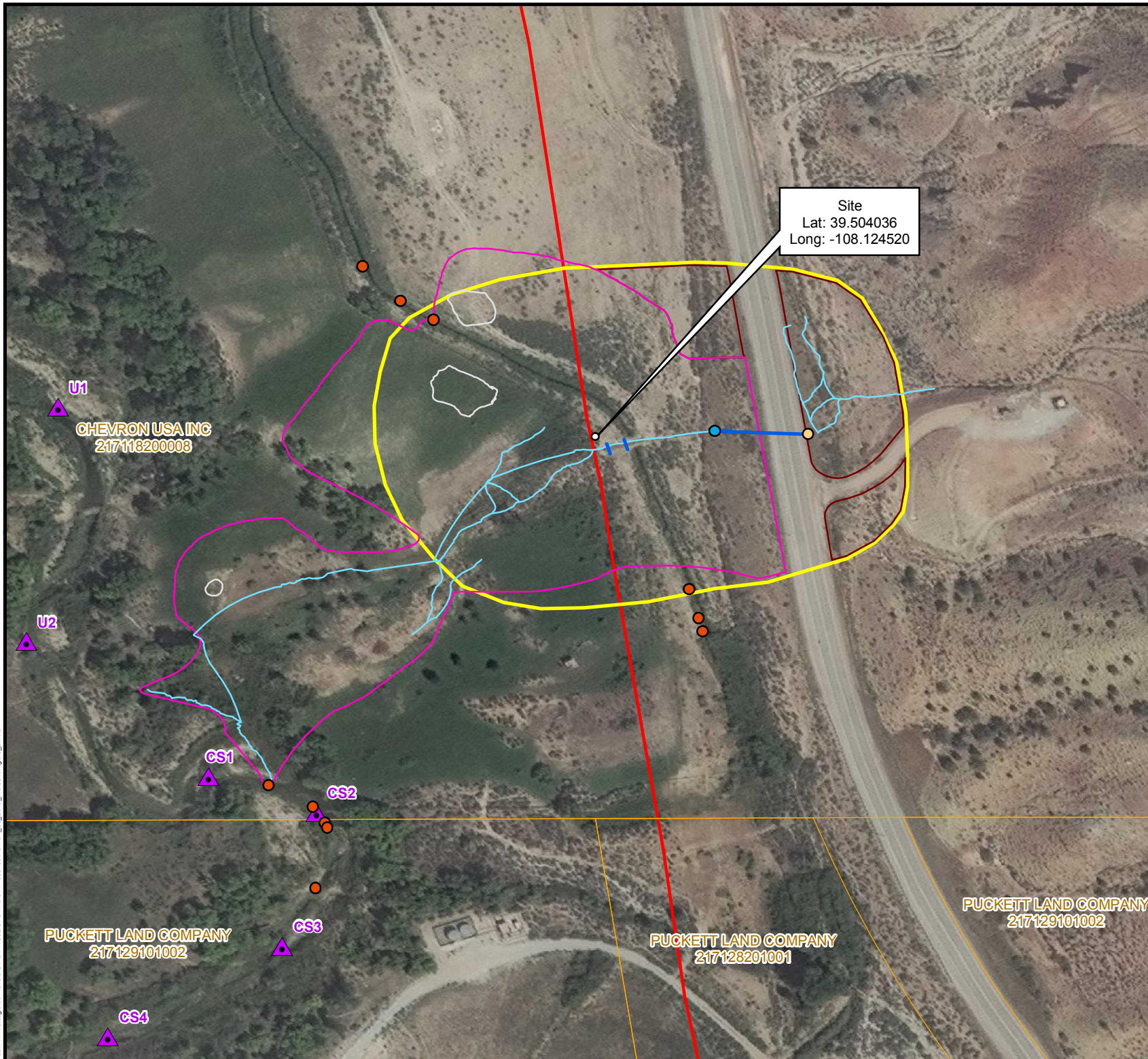


Path: \\wnstlgsfs01\GIS\BMP\PROJECTS\MIDST\Picoance\PDF01_08_2019_incidentFigure_2.mxd



LEGEND

- ▲ Creek Sample Locations
- Waterway Boom
- Culvert Inlet
- Culvert Outlet
- Culvert
- Site Drainage
- Grand Valley 16" Pipeline
- Excavated/Scraped Area
- In-Situ Remediation Area
- Soil Stockpile
- Overspray Area Estimate
- Parcels

FIGURE 2
INCIDENT SITE
GRAND VALLEY 16" PIPELINE
GARFIELD COUNTY, COLORADO

0 0.005 0.01 0.02 0.03 0.04
Miles

Williams Corporate Hdqrs
One Williams Center
Tulsa, OK 74172
Phone: 800-945-5426

Created By: KES

Date: 1/25/2019

Disclaimer: This document and its contents, if any, is the property of Williams Companies Inc. No affiliates and subsidiaries, ("Williams") and may contain privileged, confidential, or proprietary trade secret information. The dissemination or distribution without Williams prior written consent is prohibited. Williams makes no warranty or representation, express, implied, or otherwise, as to the accuracy or completeness of the information shown or not shown on this document, and declines responsibility for the actions of third parties taken in reliance thereon. For general reference purposes only. DO NOT USE to determine, certify, or verify map features, scale and/or other information.