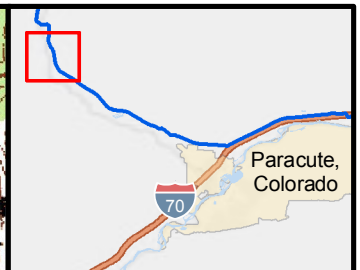
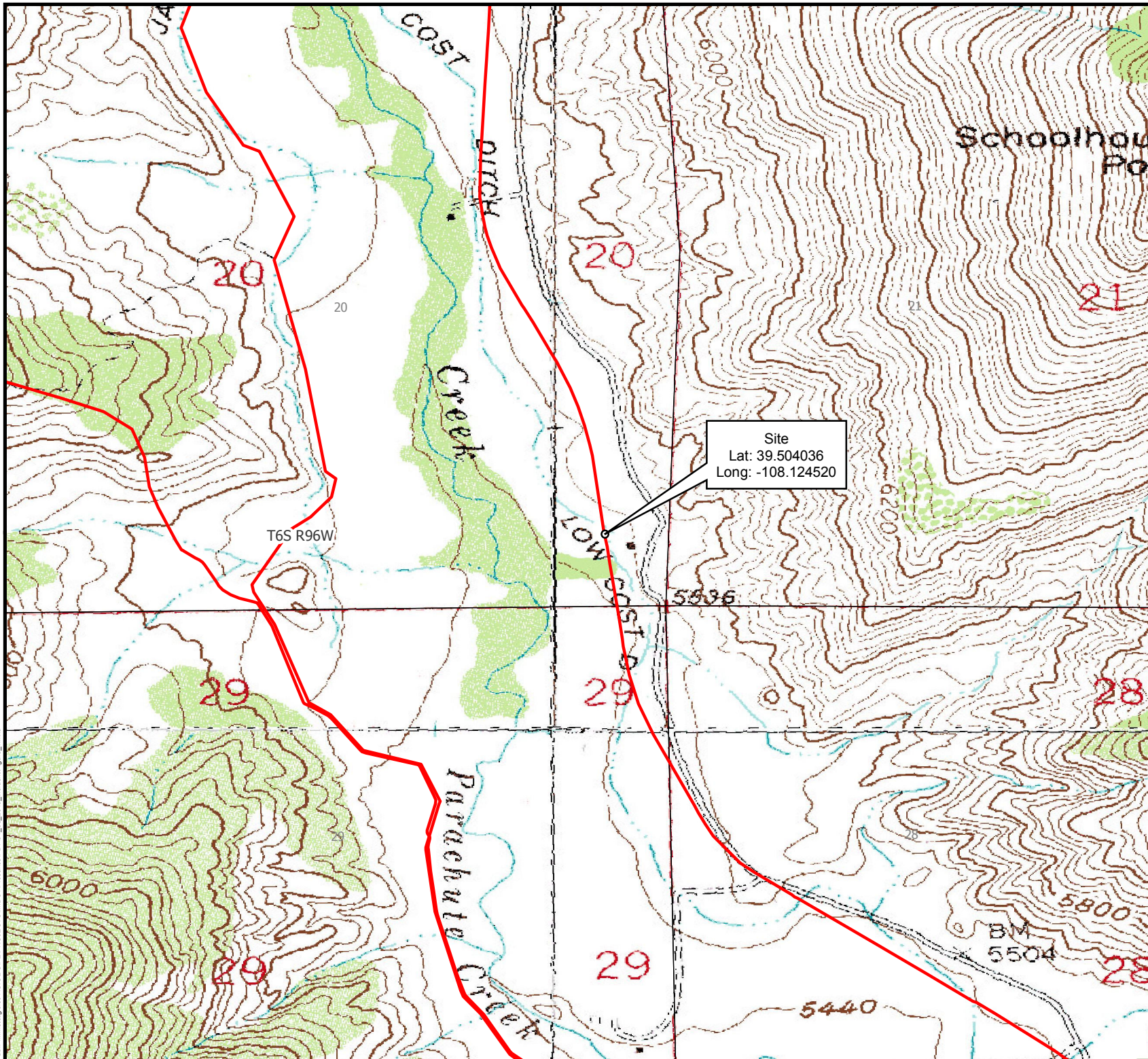


Path: \\wms01g01\GIS\BUPROJECTS\MIDST\Proance\PDF\01_08_2019_IncidentFigure_1.mxd



LEGEND

- Active/In-Service Pipelines
- Sections



FIGURE 1
INCIDENT SITE
GRAND VALLEY 16\" PIPELINE
GARFIELD COUNTY, COLORADO

	Williams Corporate Hdqrs One Williams Center Tulsa, OK 74172 Phone: 800-945-5426
<small>Disclaimer: This document and its contents, if any, is the property of Williams Corporation. It contains confidential and proprietary information. The disclosure or distribution without written consent is prohibited. Williams makes no warranty or representation, express, implied, or otherwise, as to the accuracy or completeness of the information shown or not shown on this document, and declares responsibility for the actions of third parties taken in reliance thereon. For general reference purposes only. DO NOT USE to determine, certify, or verify map features, scale and/or other information.</small>	
Created By: KES	Date: 1/25/2019