

Inspection Photos

1/17/2019

Operator: BAYHORSE PETROLEUM LLC - 10234

Location ID: 384907

Inspection Doc. Number: 682504428

Kiowa County, CO

Aaron Trujillo
NE Reclamation Specialist
COGCC

Inspection Photos
Operator: BAYHORSE PETROLEUM LLC - 10234
Location ID: 384907



Photo 1: 2006 Google Earth aerial image. Photo location prior to oil and gas disturbance

Inspection Photos
Operator: BAYHORSE PETROLEUM LLC - 10234
Location ID: 384907

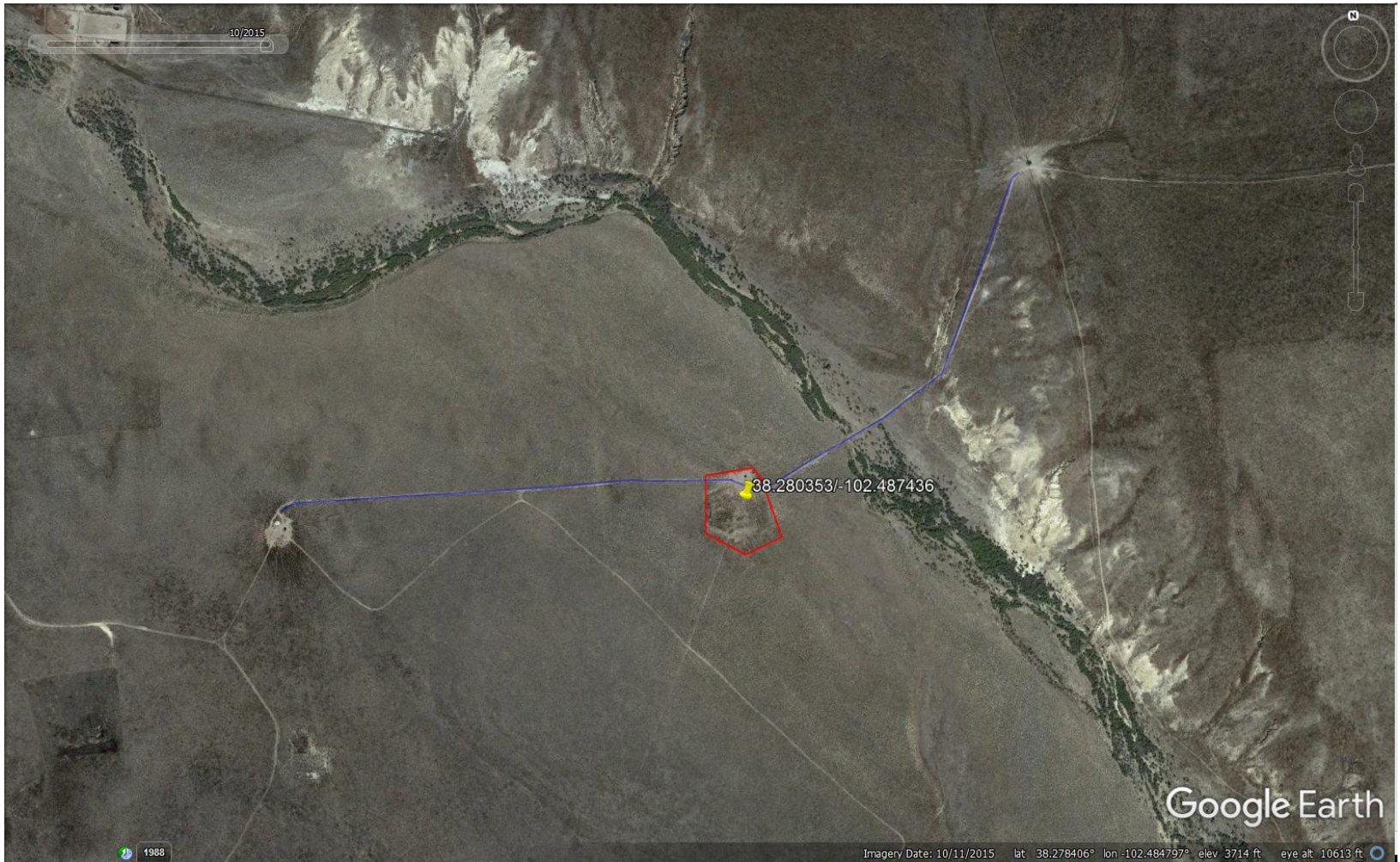


Photo 2: 2015 Google Earth aerial image. Photo shows the O&G location and access road. It appears as though an oil and gas access road has been constructed west to the location constructed and to the northeast. Access roads do not appear to have been pre-existing the oil and gas location. Surface owner does appear to be utilizing roads to access stock tanks.



Photo 3: Photo taken from the northeast end of the location, facing south. Photo shows location remains predominantly bare and exposed soil.



Photo 4: Photo taken from the northeast end of the location, facing southwest. Photo shows location remains predominantly bare and exposed soil.



Photo 5: Photo taken from the northeast end of the location, facing west. Photo shows location remains predominantly bare and exposed soil.



Photo 6: Photo taken from the northwest end of the location, facing east. See comments under photo 5



Photo 7: Photo taken from the northwest end of the location, facing north. See comments under photo 5



Photo 8: Photo taken from the southwest end of the location, facing north. See comments under photo 5



Photo 9: Photo taken from the southwest end of the location, facing northeast. See comments under photo 5



Photo 10: Photo taken from the southwest end of the location, facing east. See comments under photo 5



Photo 11: Photo taken from the southeast end of the location, facing west. See comments under photo 5. Photo also shows area of cut-slope that does not appear to have been recontoured/regraded.



Photo 12: Photo taken from the southeast end of the location, facing northwest. See comments under photo 5



Photo 13: Photo taken from the southeast end of the location, facing north. See comments under photo 5



Photo 14: Photo taken from the northeast end of the location, facing south. Photo show evidence of erosion occurring on location



Photo 15: Photo taken from the northeast end of the location, facing north. See comments under photo 14. Photo also shows a stock tank that has been placed on the north end of the location.



Photo 16: Photo taken from the adjacent reference area. Vegetation observed included Blue grama, Sand Sage, Prickly pear cactus, etc... Photo shows location is not reflective of the reference areas.