



CEMENT BOND LOG

Mesa Wireline

Company	ENCANA OIL & GAS USA		
Well	ORCHARD UNIT 17-11		
Field	ORCHARD		
County	MESA		
State	COLORADO		
Company	ENCANA OIL & GAS USA	Well	ORCHARD UNIT 17-11
Field	ORCHARD	County	MESA
State	COLORADO	Location:	API #: 05077092850000
Permanent Datum	SHL: SESW-17-8S-96 W	Other Services	NONE
Log Measured From	BHL: NESW-17-8S-96 W	Elevation	
Drilling Measured From	SEC: 17 TWP: 8S RGE: 96W	K.B. 5766	
	GROUND LEVEL Elevation 5750'	D.F. 5767	
	KELLY BUSHING =16'	G.L. 5750	

Date	NOV-18-2007			
Run Number	ONE			
Depth Driller	5107			
Depth Logger	3250			
Bottom Logged Interval	3250			
Top Log Interval	850			
Open Hole Size	7.875"			
Type Fluid	WATER			
Density / Viscosity	~8.3#			
Max. Recorded Temp.	N/A			
Estimated Cement Top	920			
Time Well Ready	N/A			
Time Logger on Bottom	N/A			
E equipment Number	RBT05A054			
Location	GRAND JUNCTION			
Recorded By	C.P ACE			
Witnessed By	R.WIRTH			
Borehole Record		Tubing Record		
Run Number	Bit	From	To	Size
N/A				Weight
				From
				To
Casing Record	Size	Wdth	Top	Bottom
Surface String	N/A			
Prot. String				
Production String	5.5"	17#	0	5107
Liner				

<<< Fold Here >>>

All interpretations are opinions based on inferences from electrical or other measurements and we cannot and do not guarantee the accuracy or correctness of any interpretation, and we shall not, except in the case of gross or willful negligence on our part, be liable or responsible for any loss, costs, damages, or expenses incurred or sustained by anyone resulting from any interpretation made by any of our officers, agents or employees. These interpretations are also subject to our general terms and conditions set out in our current Price Schedule.

Comments

CORRELATED TO SCHLUMBERGER CEMENT BOND LOG DATED JULY 12 2007

LOGGED UNDER 0 PSI

WE APPRECIATE YOUR BUSINESS, MESA WIRELINE LLC, GRAND JUNCTION CO. (970) 257-0



MAIN PASS 5'=100'

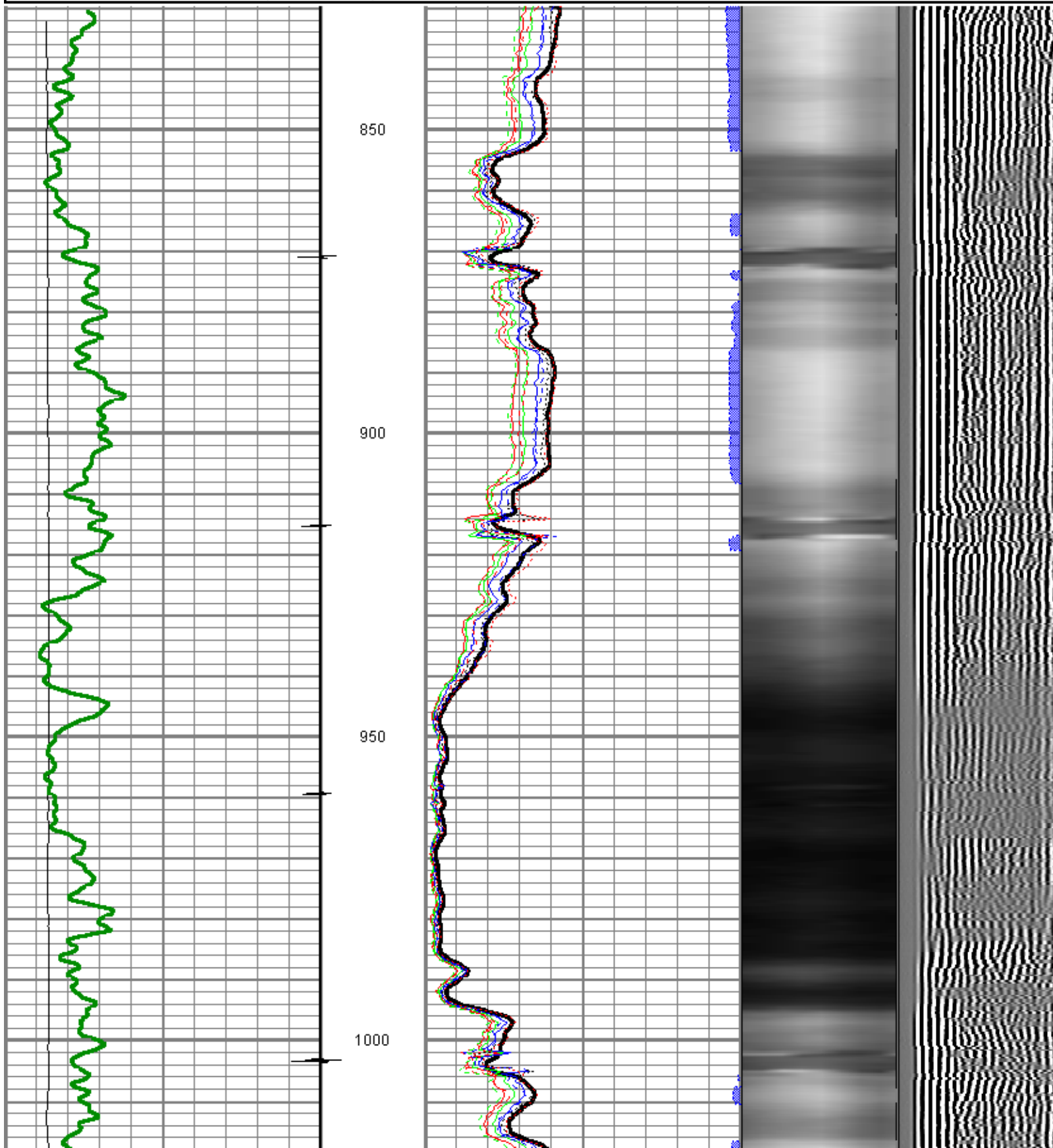
Database File: n17ou.db
 Dataset Pathname: pass2
 Presentation Format: rbt_fin
 Dataset Creation: Mon Nov 19 10:48:04 2007 by Log Std Casedhole 07081
 Charted by: Depth in Feet scaled 1:240

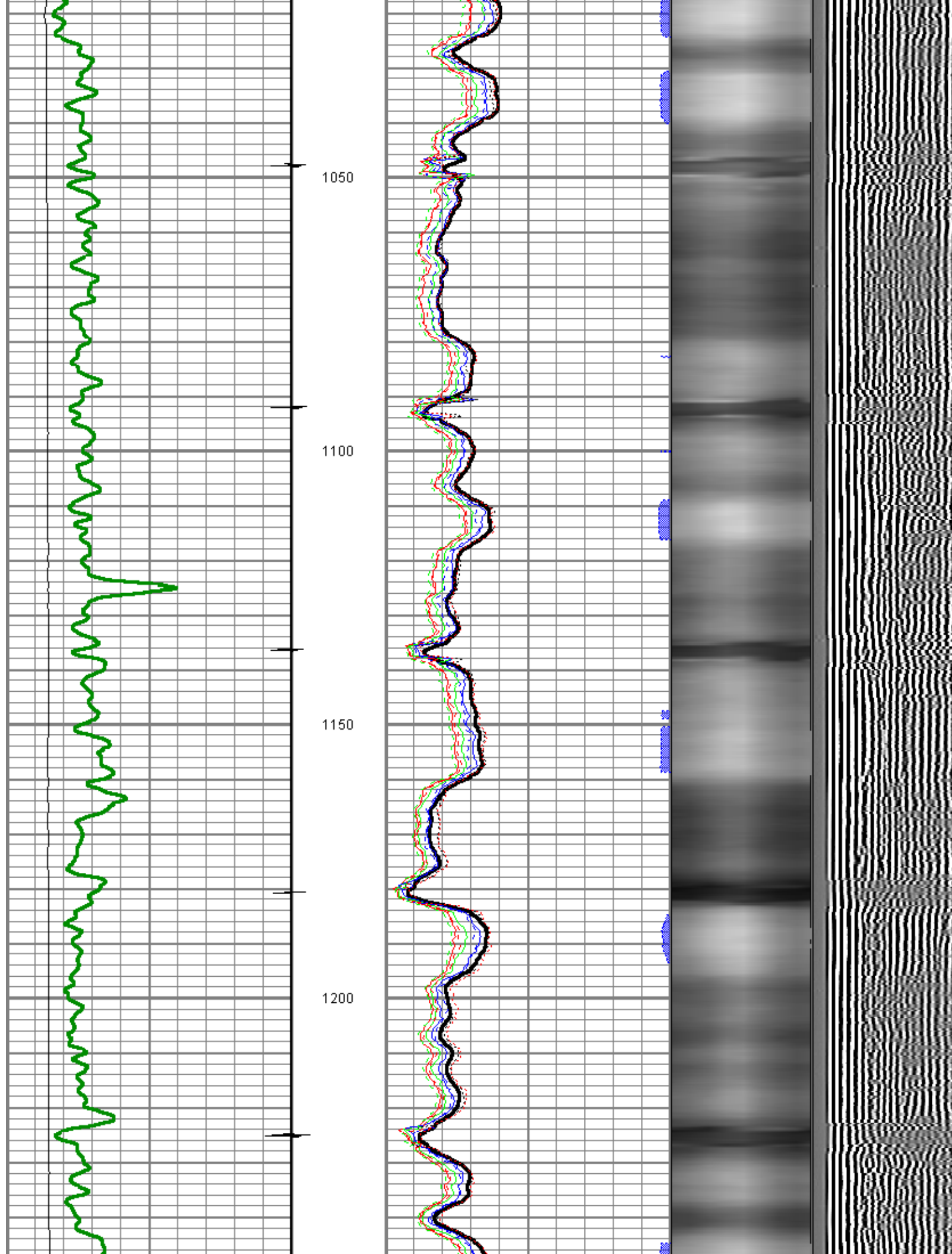
0	LTEN (lb)	4000
0	GR (GAPI)	200

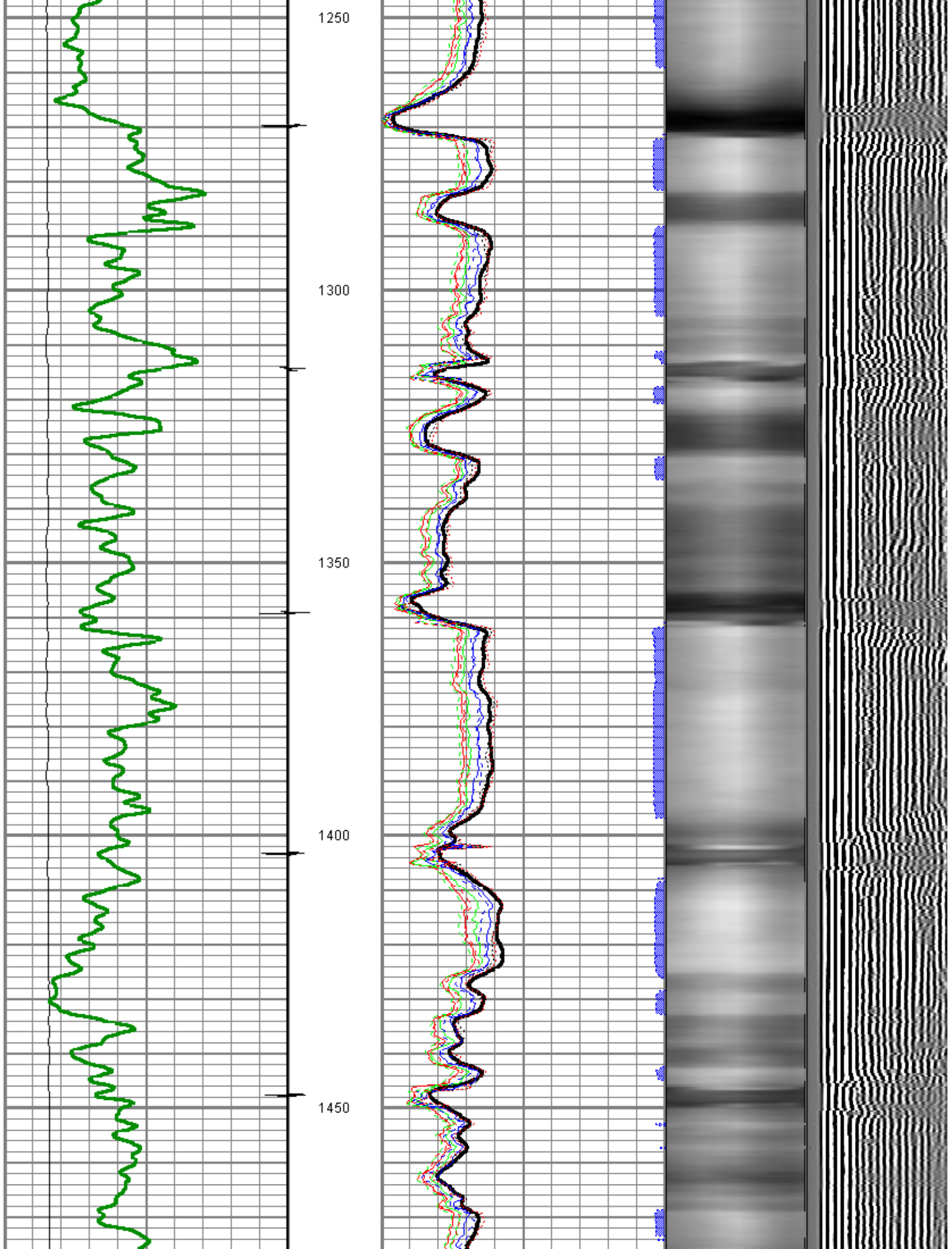
CCL

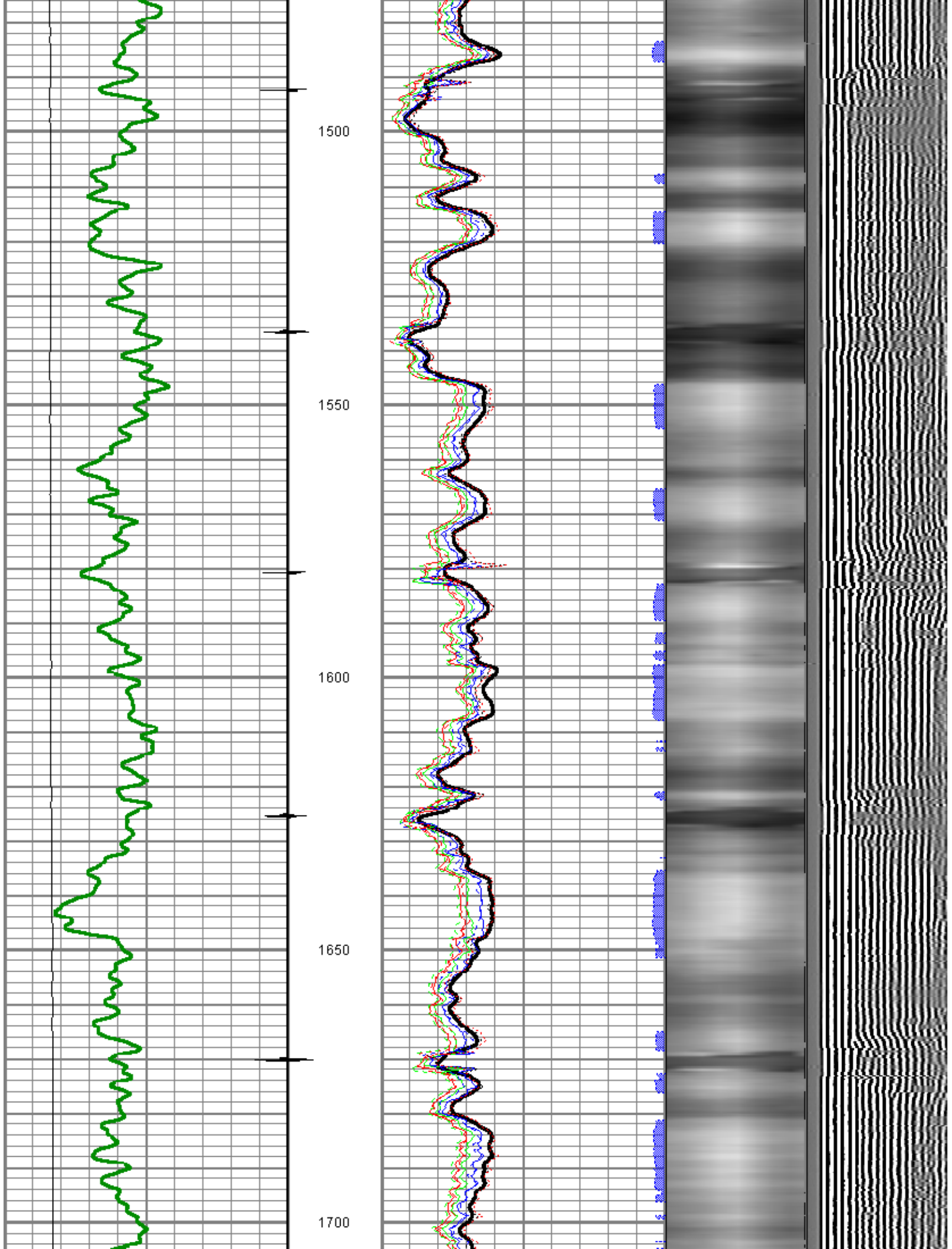
0	Amplitude (mV)	100
0	TT3FT (usec)	185

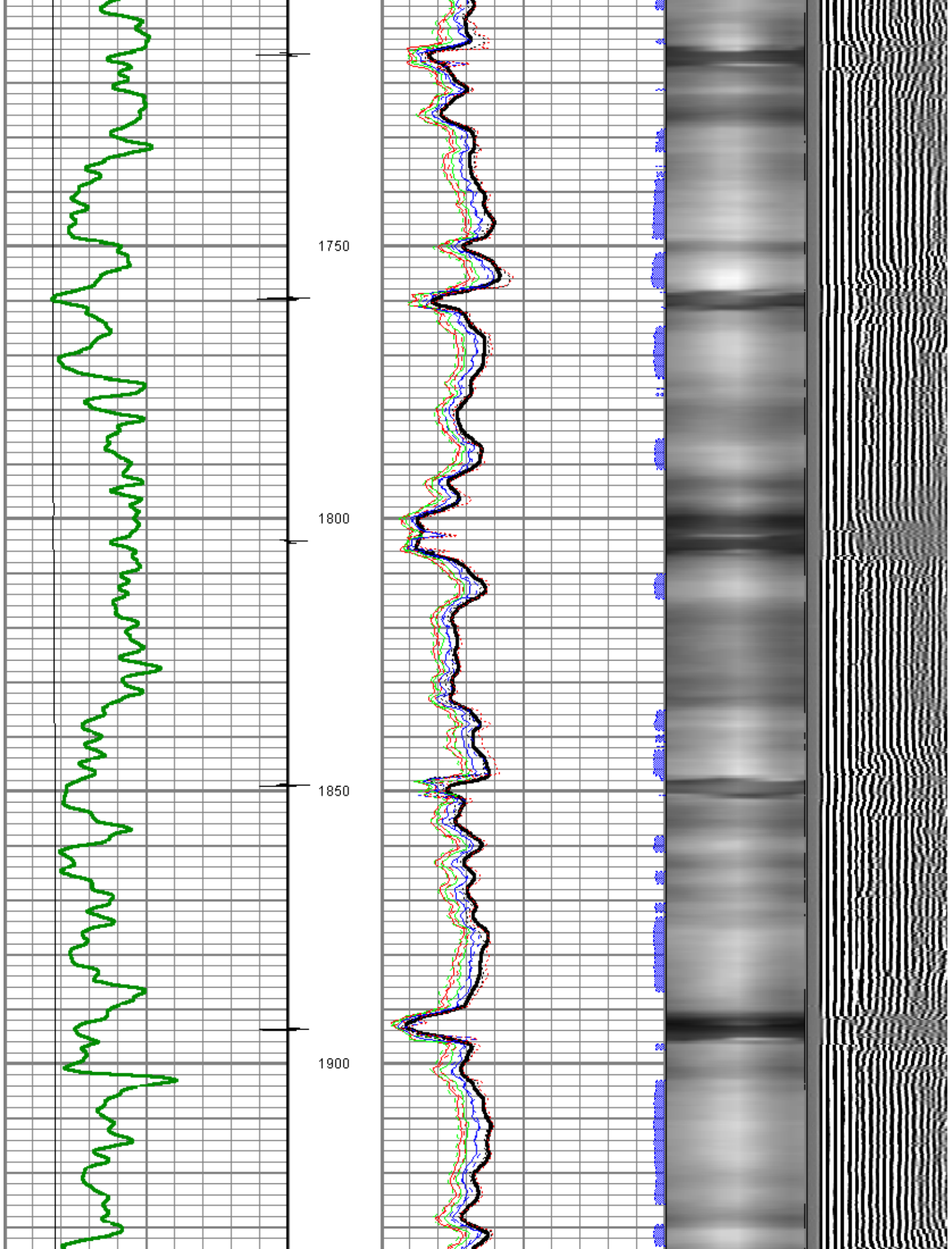
1	SECTORS	8	Variable Density
0		70	200 1200

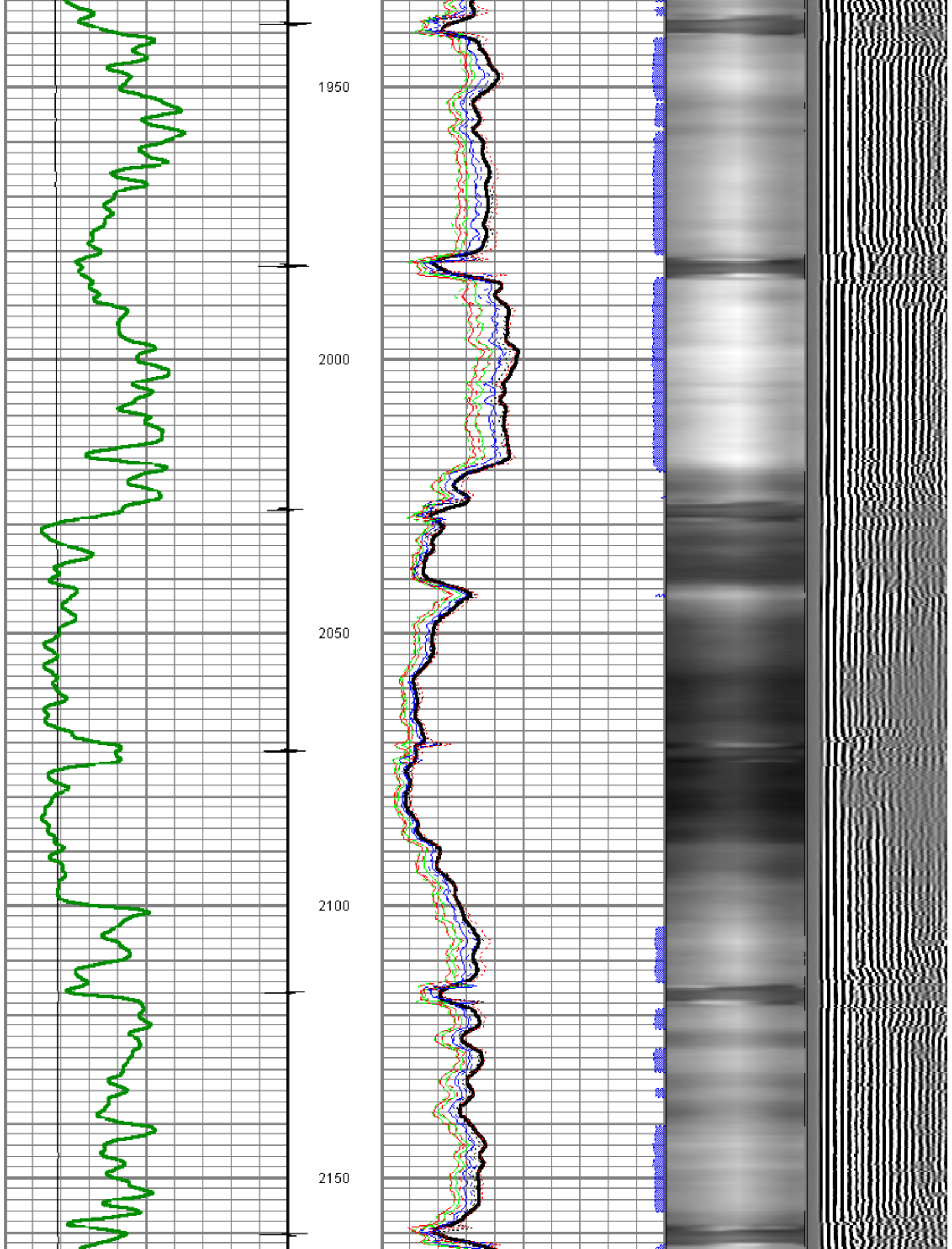


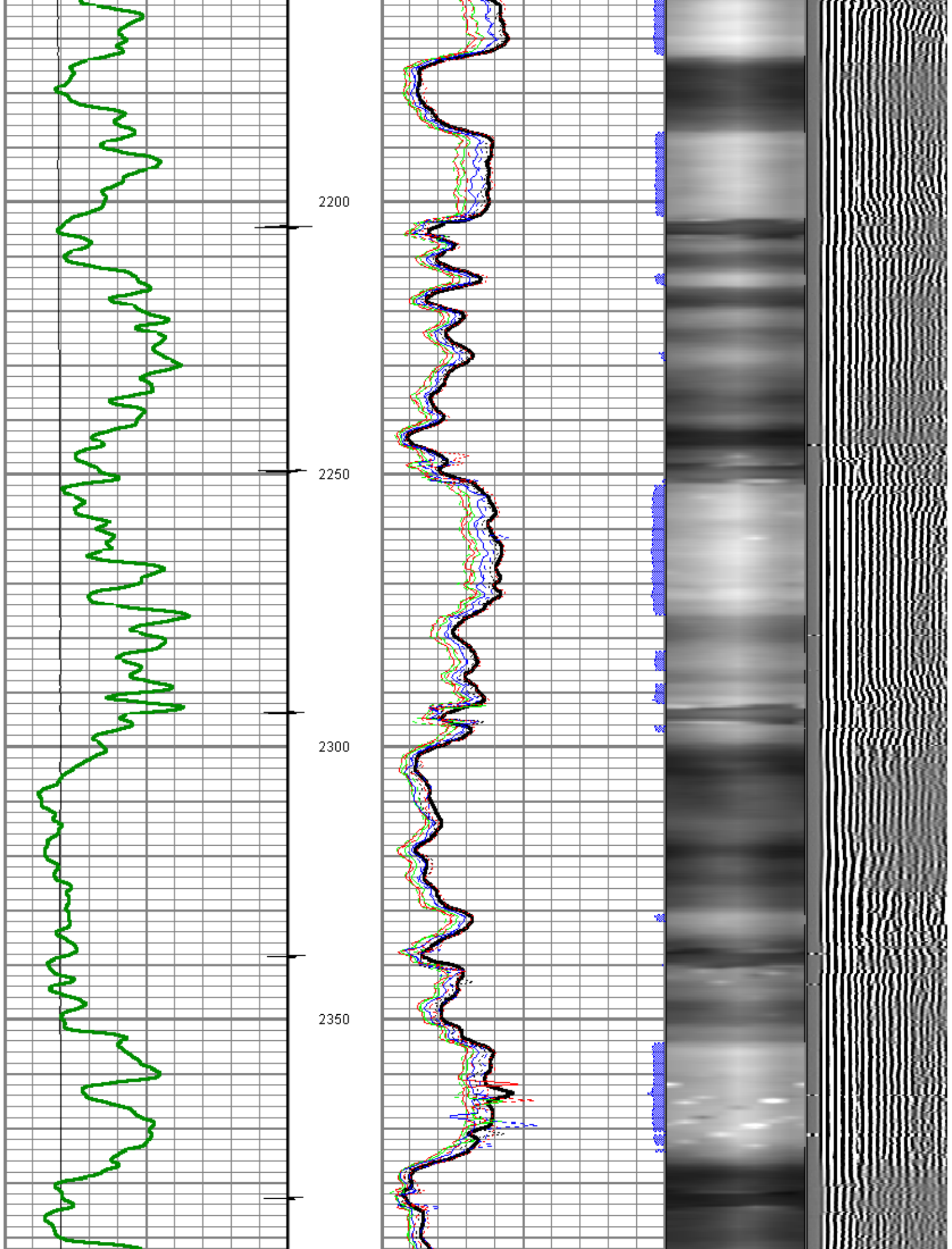


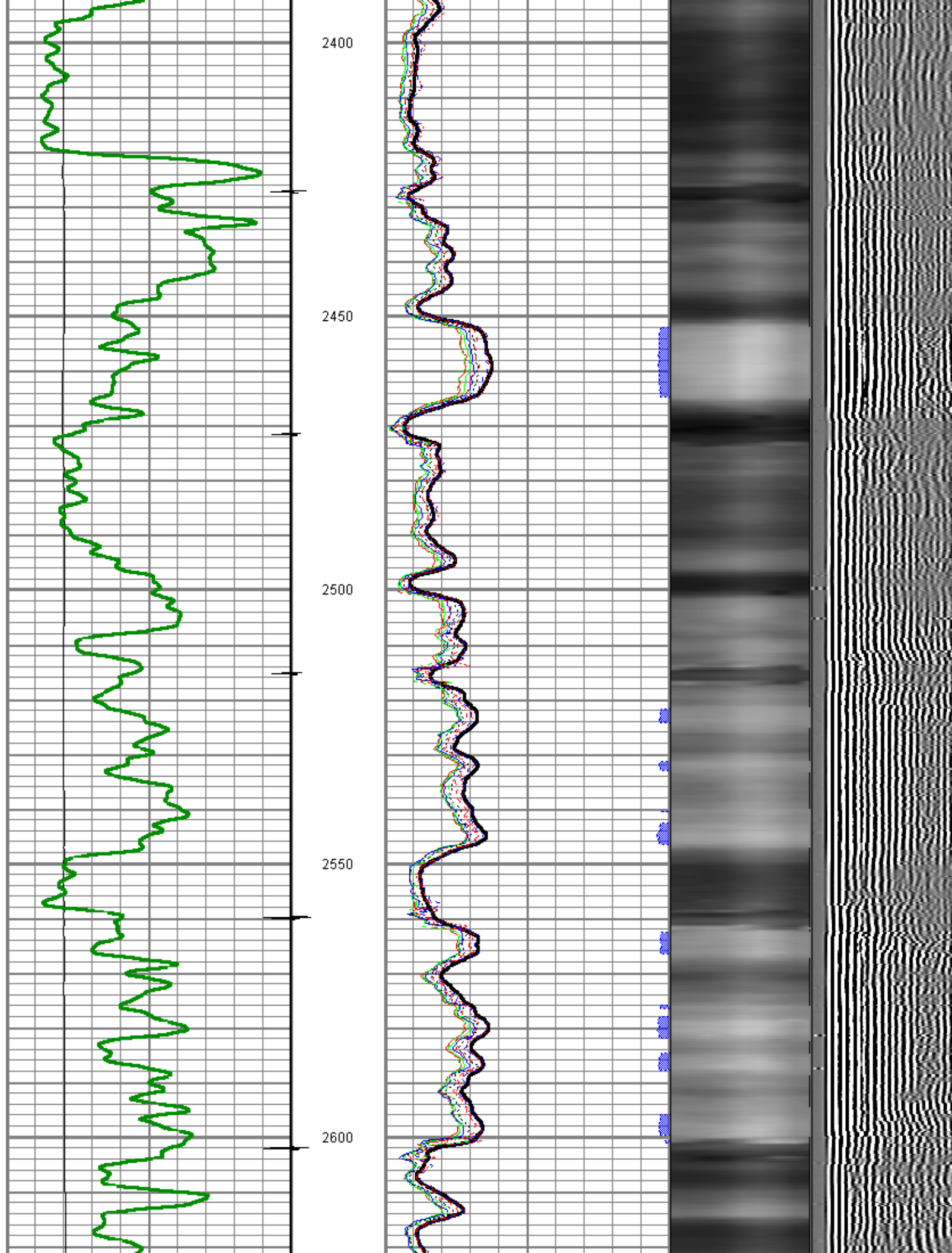


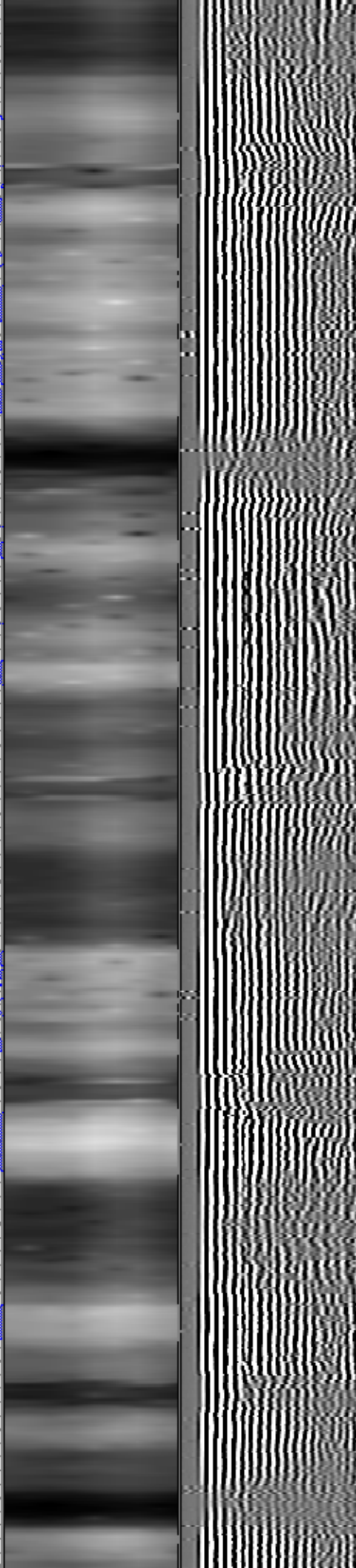
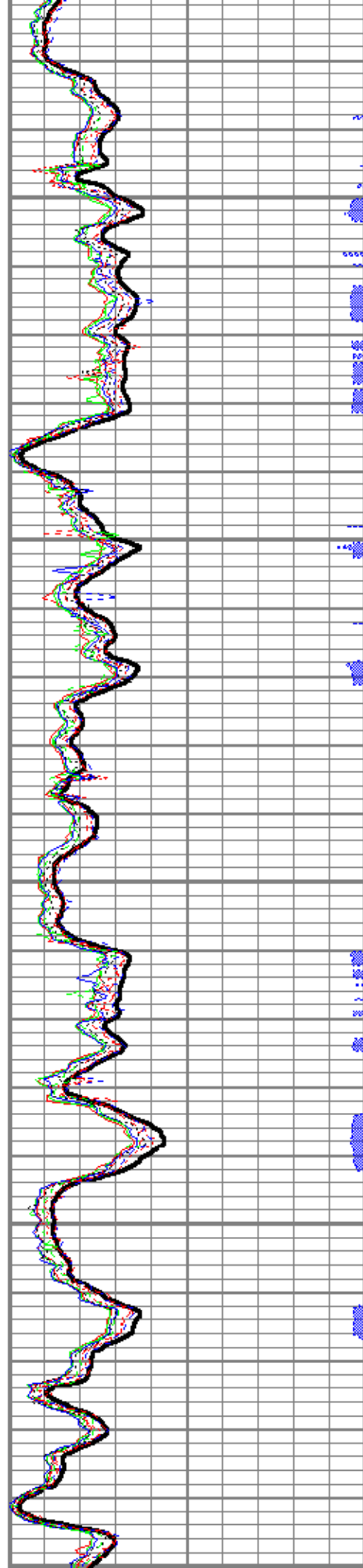
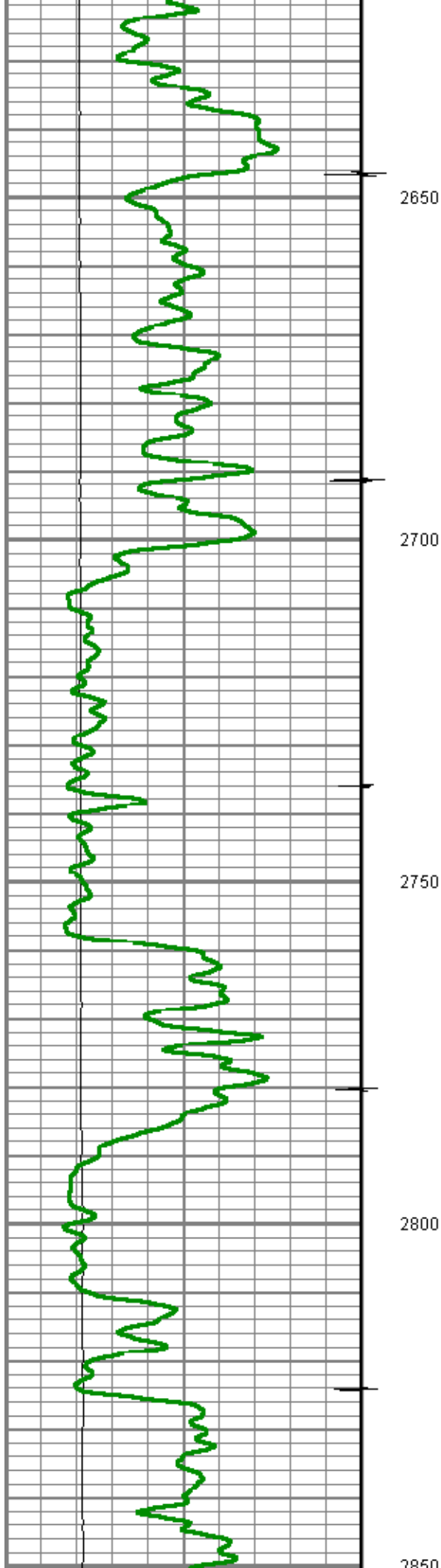


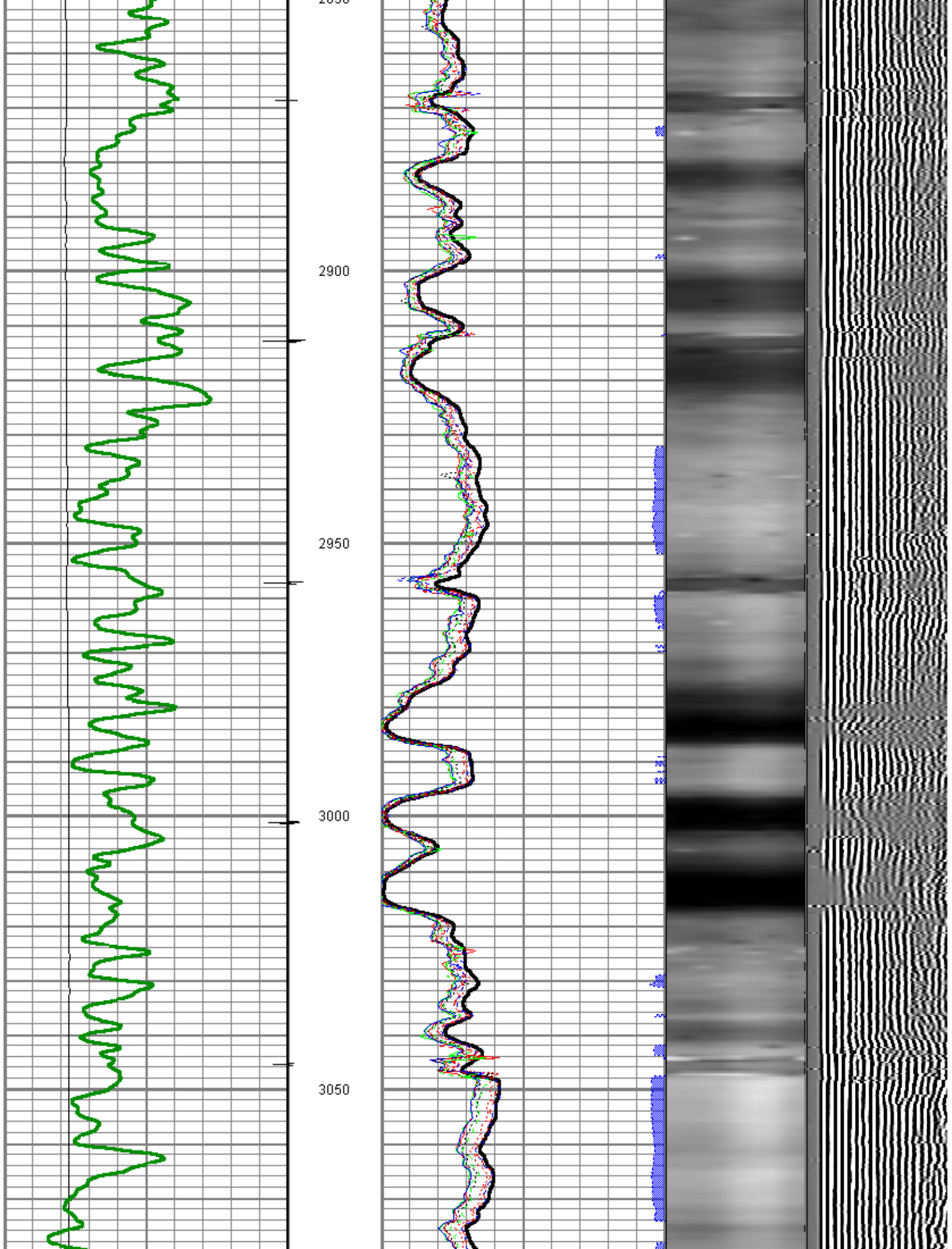


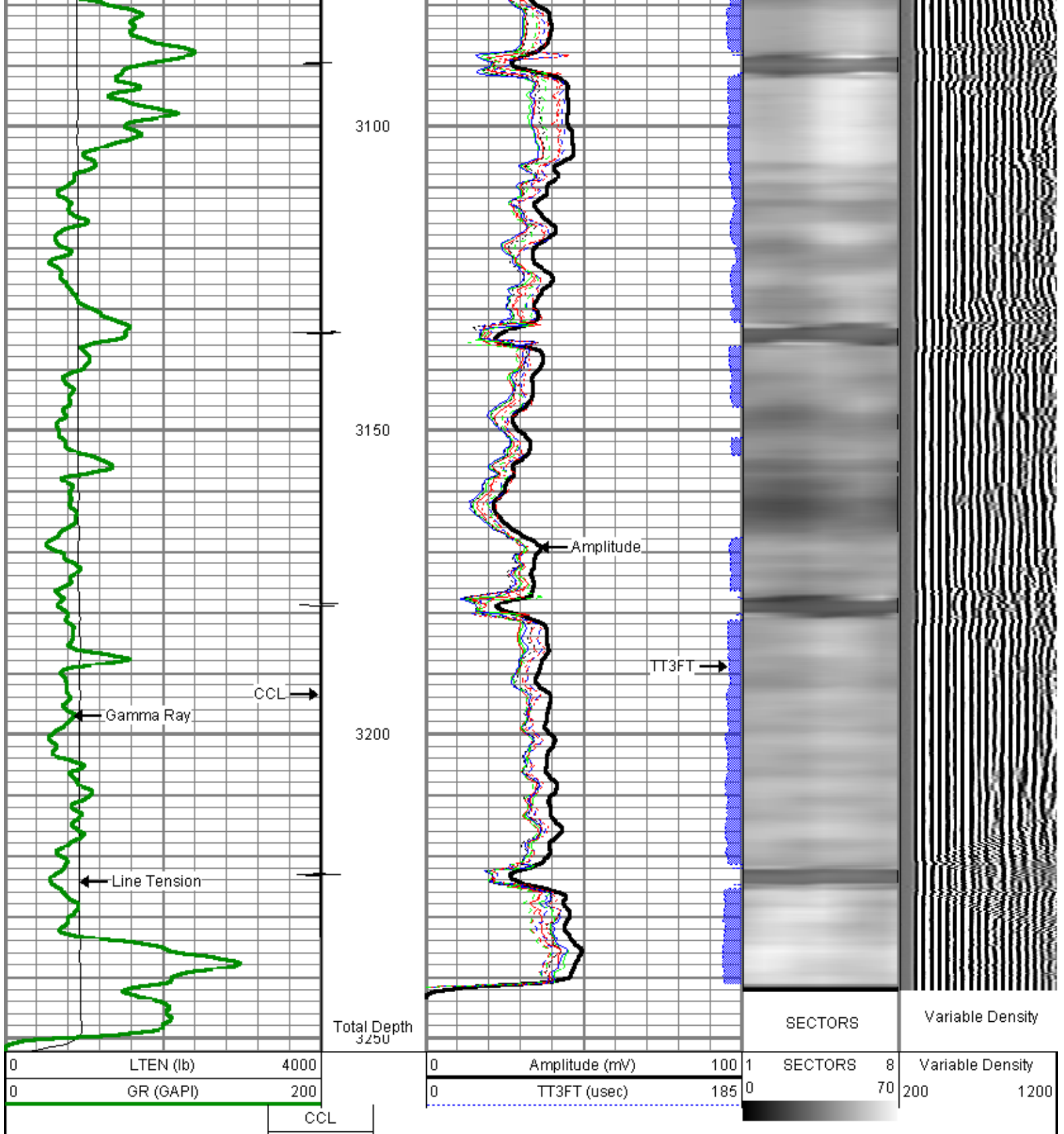












Company
Well
Field
County
State

ENCANA OIL & GAS USA
ORCHARD UNIT 17-11
ORCHARD
MESA
COLORADO