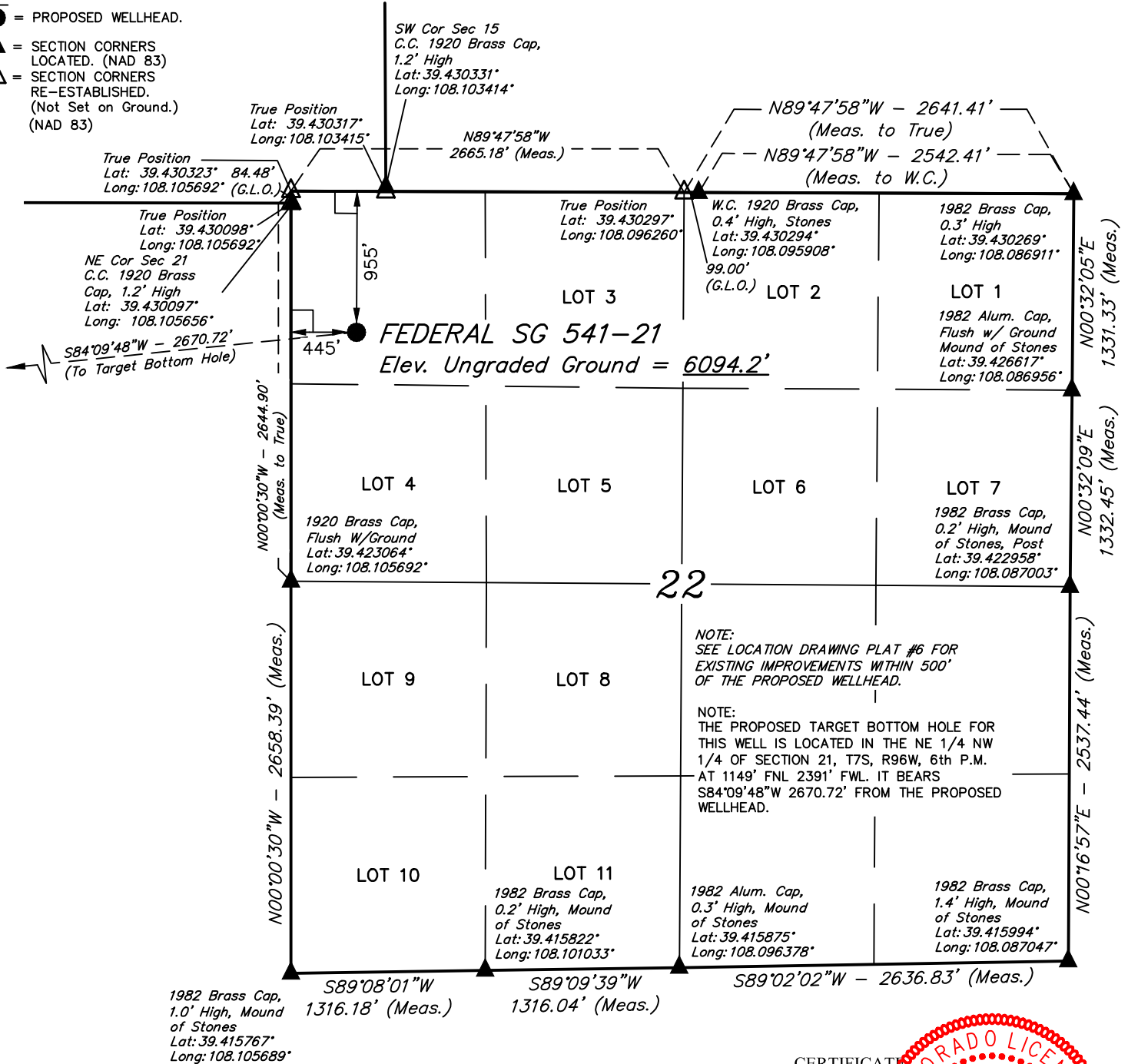


LEGEND:

- = 90° SYMBOL
- = PROPOSED WELLHEAD.
- ▲ = SECTION CORNERS LOCATED. (NAD 83)
- △ = SECTION CORNERS RE-ESTABLISHED. (Not Set on Ground.) (NAD 83)

T7S, R96W, 6th P.M.



NOTE:
SEE LOCATION DRAWING PLAT #6 FOR EXISTING IMPROVEMENTS WITHIN 500' OF THE PROPOSED WELLHEAD.

NOTE:
THE PROPOSED TARGET BOTTOM HOLE FOR THIS WELL IS LOCATED IN THE NE 1/4 NW 1/4 OF SECTION 21, T7S, R96W, 6th P.M. AT 1149' FNL 2391' FWL. IT BEARS S84°09'48"W 2670.72' FROM THE PROPOSED WELLHEAD.

PDOP = 1.6

NAD 83 (SURFACE LOCATION)	
LATITUDE = 39°25'39.71" (39.427698)	
LONGITUDE = 108°06'14.82" (108.104118)	
STATE PLANE NAD 83 (CO. CEN.)	
N: 1591210.93 E: 2264504.36	



PLAT #1

CERTIFICATE OF LOCATION
THIS IS TO CERTIFY THAT THE ABOVE PLAT WAS PREPARED AND THE LOCATION AS SHOWN WAS STAKED ON THE GROUND FROM FIELD NOTES OF ACTUAL SURVEYS MADE BY ME OR UNDER MY SUPERVISION AND THAT THE SAME ARE TRUE AND CORRECT TO THE BEST OF MY KNOWLEDGE AND BELIEF.

REGISTERED LAND SURVEYOR
REGISTRATION # 198180
STATE OF COLORADO 10-02-18

REV: 3 10-02-18 M.D. (BHL MOVE)

BASIS OF BEARINGS
BASIS OF BEARINGS IS A G.P.S. OBSERVATION

BASIS OF ELEVATION

SPOT ELEVATION AT THE NORTHWEST CORNER OF SECTION 30, T7S, R95W, 6th P.M., TAKEN FROM THE FORKED GULCH, QUADRANGLE, COLORADO, GARFIELD COUNTY, 7.5 MINUTE QUAD. (TOPOGRAPHIC MAP) PUBLISHED BY THE UNITED STATES DEPARTMENT OF THE INTERIOR, GEOLOGICAL SURVEY. SAID ELEVATION IS MARKED AS BEING 5966 FEET.

UELS, LLC

Corporate Office * 85 South 200 East
Vernal, UT 84078 * (435) 789-1017



TEP Rocky Mountain LLC

FEDERAL SG 541-21 (SURFACE LOCATION)
NW 1/4 NW 1/4, SECTION 22, T7S, R96W, 6th P.M.
GARFIELD COUNTY, COLORADO

SURVEYED BY	BART HUNTING, C.R.	02-16-18	SCALE
DRAWN BY	M.D.	02-24-18	1" = 1000'

WELL LOCATION PLAT

LEGEND:

- = 90° SYMBOL
 ● = PROPOSED WELLHEAD.
 ○ = TARGET BOTTOM HOLE.
 ▲ = SECTION CORNERS LOCATED. (NAD 83)
 △ = SECTION CORNERS RE-ESTABLISHED. (Not Set on Ground.) (NAD 83)

T7S, R96W, 6th P.M.

SW Cor Sec 15
C.C. 1920 Brass Cap,
1.2' High
Lat: 39.430331°
Long: 108.103414°

True Position
Lat: 39.430317°
Long: 108.103415°

N89°55'19"W - 4602.26' (Meas. to True)
N89°55'19"W - 4612.71' (Meas. to C.C.)
True Position
Lat: 39.430323° 84.48'
Long: 108.105692° (G.L.O.)

1920 Brass Cap,
0.7' High
Lat: 39.430114°
Long: 108.121980°

True Position
Lat: 39.430098°
Long: 108.105692°

C.C. 1920 Brass
Cap, 1.2' High
Lat: 39.430097°
Long: 108.105656°

Surface
Location

1920 Brass Cap,
Lat: 39.422894°
Long: 108.121981°

W 1/4 Cor. Sec. 22
1920 Brass Cap,
Flush W/Ground
Lat: 39.423064°
Long: 108.105692°

NOTE:
THE PROPOSED TARGET BOTTOM HOLE
BEARS S84°09'48"W 2670.72' FROM THE
PROPOSED WELLHEAD WHICH IS LOCATED IN
THE NW 1/4 NW 1/4 OF SECTION 22, T7S,
R96W, 6th P.M. AT 955' FNL 445' FWL.

C.C. Brass Cap,
Flush W/Ground,
Lat: 39.415783°
Long: 108.122006°

True Position
Lat: 39.415784°
Long: 108.122005°

W.C. S 1/4 Cor. Sec. 21
1920 Brass Cap,
Lat: 39.415742°
Long: 108.112778°

1982 Brass Cap,
1.0' High, Mound
of Stones
Lat: 39.415767°
Long: 108.105689°

NW Cor Sec 28
1920 Brass Cap,
2.5' High, Mound
of Stones
Lat: 39.415786°
Long: 108.123806°

N 1/4 Cor Sec 28
1920 Brass Cap,
1.6' High
Lat: 39.415778°
Long: 108.114806°

CERTIFICATE

THIS IS TO CERTIFY THAT THE ABOVE PLAT WAS PREPARED AND THE LOCATION AS SHOWN WAS STAKED ON THE GROUND FROM FIELD NOTES OF ACTUAL SURVEYS MADE BY ME OR UNDER MY SUPERVISION AND THAT THE SAME ARE TRUE AND CORRECT TO THE BEST OF MY KNOWLEDGE AND BELIEF.

REGISTERED LAND SURVEYOR
REGISTRATION NO. 188180
STATE OF COLORADO 10-02-18

NAD 83 (TARGET BOTTOM HOLE)
LATITUDE = 39°25'37.03" (39.426952)
LONGITUDE = 108°06'48.67" (108.113520)
STATE PLANE NAD 83 (CO. CEN.)
N: 1591015.79 E: 2261841.66



PLAT #1

REV: 3 10-02-18 M.D. (BHL MOVE)

BASIS OF BEARINGS

BASIS OF BEARINGS IS A G.P.S. OBSERVATION

BASIS OF ELEVATION

SPOT ELEVATION AT THE NORTHWEST CORNER OF SECTION 30, T7S, R95W, 6th P.M., TAKEN FROM THE FORKED GULCH, QUADRANGLE, COLORADO, GARFIELD COUNTY, 7.5 MINUTE QUAD. (TOPOGRAPHIC MAP) PUBLISHED BY THE UNITED STATES DEPARTMENT OF THE INTERIOR, GEOLOGICAL SURVEY. SAID ELEVATION IS MARKED AS BEING 5966 FEET.

UELS, LLC

Corporate Office * 85 South 200 East
Vernal, UT 84078 * (435) 789-1017



TEP Rocky Mountain LLC

FEDERAL SG 541-21 (TARGET BOTTOM HOLE)
NW 1/4 NE 1/4, SECTION 21, T7S, R96W, 6th P.M.
GARFIELD COUNTY, COLORADO

SURVEYED BY	BART HUNTING, C.R.	02-16-18	SCALE
DRAWN BY	M.D.	02-24-18	1" = 1000'

WELL LOCATION PLAT

