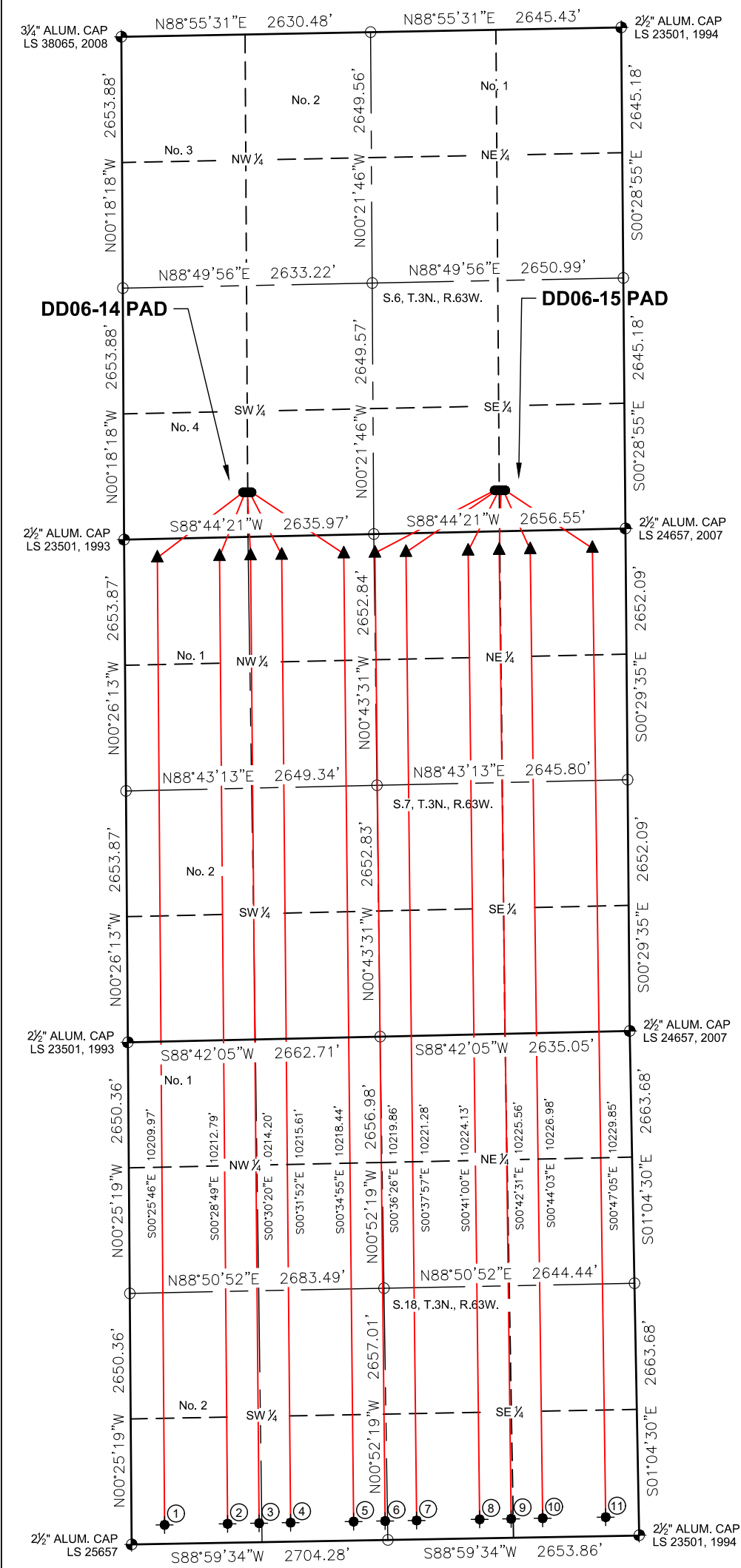
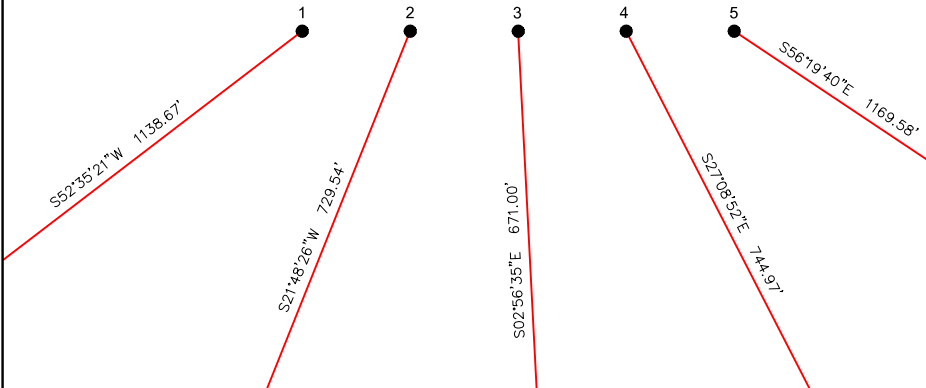


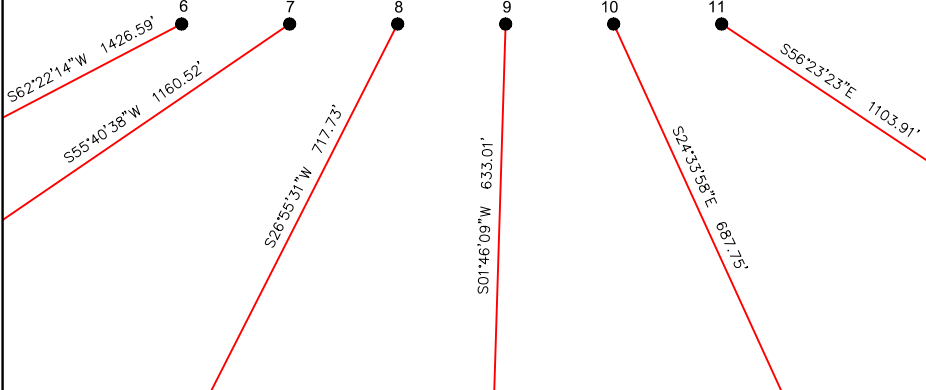
DD06-14 PAD & DD06-15 PAD
MULTI-WELL LOCATION PLAT / MULTI-WELL PLAN
T3N R63W SECTION 6



PROPOSED WELLBORE DIRECTION DATA
DD06-14 PAD
SLOTS 1-5



PROPOSED WELLBORE DIRECTION DATA
DD06-15 PAD
SLOTS 6-12



LEGEND

- FOUND MONUMENT
- CALCULATED POSITION
- PROPOSED WELL
- BOTTOM HOLE
- TOP OF PRODUCTION ZONE

- Notes:
- All bearings are Grid Bearings of the Colorado State Plane Coordinate System, North Zone, North American Datum 1983/2011. The lineal dimensions as shown herein are grid distances based upon the "U.S. Survey Foot." To get ground distances multiply shown distance by 1.000271.
 - Distances are measured at 90° from section line of the Sixth Principal Meridian, County of Weld, State of Colorado.
 - Ground elevations are based on an observed GPS elevation (NAVD 1988 DATUM).
 - Surface use: "RANGELAND"
 - Instrument Operator: Dominick Davis
 - This map does not represent a boundary survey.

DISCLAIMER:
THIS PLOT DOES NOT REPRESENT A MONUMENTED LAND SURVEY AND SHOULD NOT BE RELIED UPON TO DETERMINE BOUNDARY LINES, PROPERTY OWNERSHIP OR OTHER PROPERTY INTERESTS. PARCEL LINES, IF DEPICTED HAVE NOT BEEN FIELD VERIFIED AND MAY BE BASED UPON PUBLICLY AVAILABLE DATA THAT ALSO HAS NOT BEEN INDEPENDENTLY VERIFIED.

SURFACE HOLE LOCATION								TOP OF PRODUCTIVE ZONE		BOTTOM HOLE LOCATION	
SLOT	WELL NAME	LATITUDE	LONGITUDE	FOOTAGE		QTR-QTR	ELEV.	FOOTAGE		FOOTAGE	
1	GUTTERSEN DD18-785	40.24847°N	104.48557°W	472' FSL	1259' FWL	SWSW	4821'	200' FNL	350' FWL	200' FSL	350' FWL
2	GUTTERSEN DD18-775	40.24847°N	104.48549°W	471' FSL	1281' FWL	SWSW	4819'	200' FNL	1006' FWL	200' FSL	1015' FWL
3	GUTTERSEN DD18-770	40.24847°N	104.48541°W	471' FSL	1304' FWL	SWSW	4818'	200' FNL	1334' FWL	200' FSL	1348' FWL
4	GUTTERSEN DD18-765	40.24847°N	104.48533°W	470' FSL	1326' FWL	SESW	4818'	200' FNL	1662' FWL	200' FSL	1680' FWL
5	GUTTERSEN DD18-754	40.24847°N	104.48525°W	470' FSL	1349' FWL	SESW	4817'	200' FNL	2318' FWL	200' FSL	2345' FWL
6	GUTTERSEN DD18-750	40.24844°N	104.47606°W	434' FSL	1377' FEL	SWSE	4827'	200' FNL	2646' FEL	200' FSL	2678' FWL
7	GUTTERSEN DD18-746	40.24844°N	104.47598°W	433' FSL	1354' FEL	SWSE	4827'	200' FNL	2318' FEL	200' FSL	2345' FEL
8	GUTTERSEN DD18-735	40.24844°N	104.47590°W	433' FSL	1332' FEL	SWSE	4827'	200' FNL	1662' FEL	200' FSL	1680' FEL
9	GUTTERSEN DD18-730	40.24844°N	104.47581°W	432' FSL	1309' FEL	SESE	4826'	200' FNL	1334' FEL	200' FSL	1348' FEL
10	GUTTERSEN DD18-725	40.24844°N	104.47573°W	432' FSL	1287' FEL	SESE	4826'	200' FNL	1006' FEL	200' FSL	1015' FEL
11	GUTTERSEN DD18-715	40.24844°N	104.47565°W	431' FSL	1264' FEL	SESE	4826'	200' FNL	350' FEL	200' FSL	350' FEL



FIELD DATE:
09-21-18

DRAWING DATE:
09-27-18

SURFACE LOCATION:
SEC. 6, T3N, R63W, 6TH P.M.
WELD COUNTY, COLORADO

PUBLICLY AVAILABLE DATA SOURCES HAVE NOT BEEN INDEPENDENTLY VERIFIED BY ASCENT.

