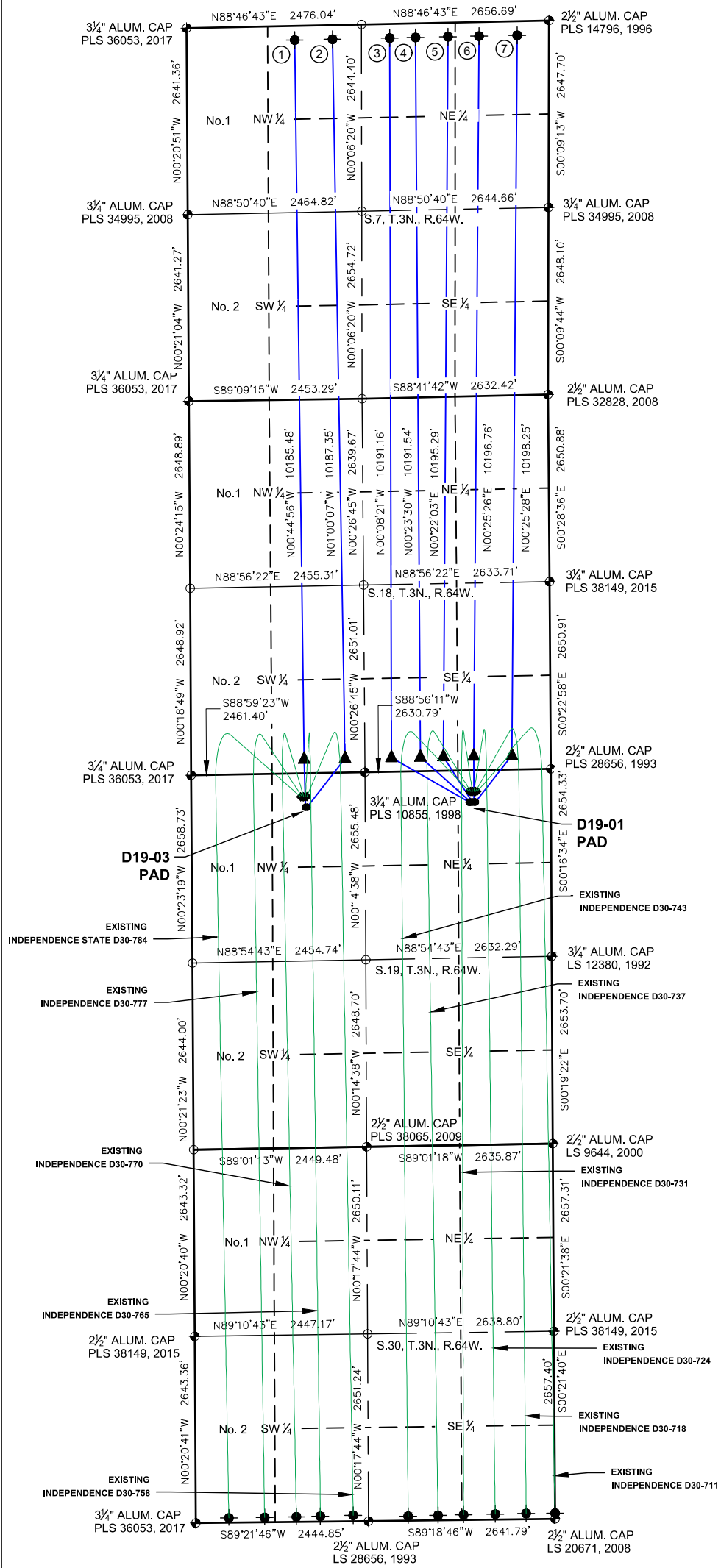
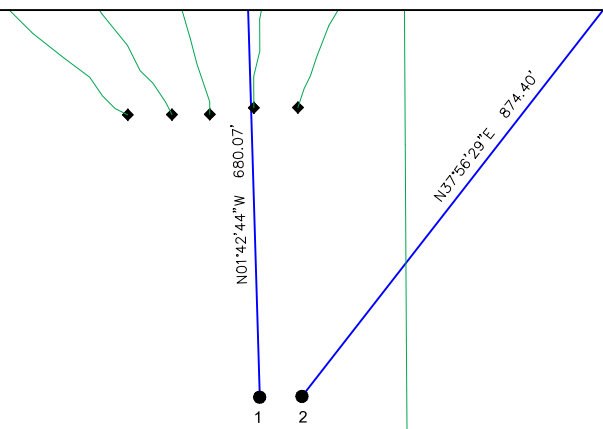


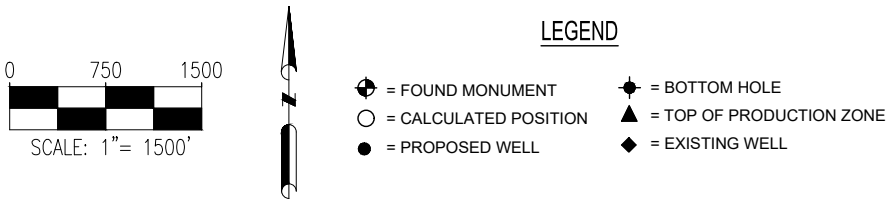
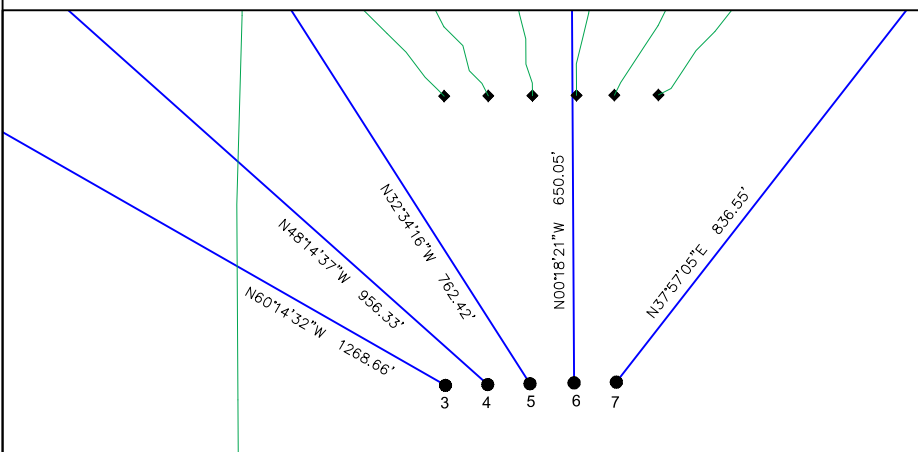
D19-03 PAD & D19-01 PAD
MULTI-WELL LOCATION PLAT / MULTI-WELL PLAN
T3N R64W SECTION 19



PROPOSED WELLBORE DIRECTION DATA
D19-03 PAD
SLOTS 1-2



PROPOSED WELLBORE DIRECTION DATA
D19-01 PAD
SLOTS 3-7



Notes:
1) All bearings are Grid Bearings of the Colorado State Plane Coordinate System, North Zone, North American Datum 1983/2011. The lineal dimensions as shown herein are grid distances based upon the "U.S. Survey Foot." To get ground distances multiply shown distance by 1.0002705.
2) Distances are measured at 90° from section line of the Sixth Principal Meridian, County of Weld, State of Colorado.
3) Ground elevations are based on an observed GPS elevation (NAVD 1988 DATUM).
4) Surface use: "RANGELAND"
5) Instrument Operator: Kyle Daley
6) This map does not represent a boundary survey.
7) Existing well INDEPENDENCE STATE D30-784 (05-123-47687) is located 330' FNL & 1548' FWL
8) Existing well INDEPENDENCE D30-777 (05-123-47684) is located 330' FNL & 1571' FWL
9) Existing well INDEPENDENCE D30-770 (05-123-47685) is located 330' FNL & 1157' FEL
10) Existing well INDEPENDENCE D30-765 (05-123-47683) is located 330' FNL & 1616' FWL
11) Existing well INDEPENDENCE D30-758 (05-123-47690) is located 330' FNL & 1638' FWL
12) Existing well INDEPENDENCE D30-743 (05-123-47590) is located 330' FNL & 1157' FEL
13) Existing well INDEPENDENCE D30-737 (05-123-47589) is located 300' FNL & 1135' FEL
14) Existing well INDEPENDENCE D30-731 (05-123-47588) is located 300' FNL & 1113' FEL
15) Existing well INDEPENDENCE D30-724 (05-123-47587) is located 300' FNL & 1090' FEL
16) Existing well INDEPENDENCE D30-718 (05-123-47707) is located 300' FNL & 1068' FEL
17) Existing well INDEPENDENCE D30-711 (05-123-47706) is located 300' FNL & 1045' FEL

DISCLAIMER:
DEPICTION OF EXISTING WELL DIRECTIONAL DATA WAS OBTAINED FROM COGCC DATABASE AND SHOULD NOT BE RELIED UPON TO DETERMINE EXACT PLANNED OR EXISTING LOCATIONS. DIRECTIONAL DATA HAS NOT BEEN FIELD VERIFIED AND MAY BE BASED UPON PUBLICLY AVAILABLE DATA THAT ALSO HAS NOT BEEN INDEPENDENTLY VERIFIED.

DISCLAIMER:
THIS PLOT DOES NOT REPRESENT A MONUMENTED LAND SURVEY AND SHOULD NOT BE RELIED UPON TO DETERMINE BOUNDARY LINES, PROPERTY OWNERSHIP OR OTHER PROPERTY INTERESTS. PARCEL LINES, IF DEPICTED HAVE NOT BEEN FIELD VERIFIED AND MAY BE BASED UPON PUBLICLY AVAILABLE DATA THAT ALSO HAS NOT BEEN INDEPENDENTLY VERIFIED.

SURFACE HOLE LOCATION							TOP OF PRODUCTIVE ZONE		BOTTOM HOLE LOCATION	
SLOT	WELL NAME	LATITUDE	LONGITUDE	FOOTAGE		QTR-QTR	ELEV.	FOOTAGE		FOOTAGE
1	INDEPENDENCE D18-767	40.21666°N	104.59689°W	480' FNL	1616' FWL	NENW	4787'	200' FSL	1600' FWL	200' FNL 1530' FWL
2	INDEPENDENCE D18-759	40.21666°N	104.59681°W	480' FNL	1638' FWL	NENW	4786'	200' FSL	2180' FWL	200' FNL 2065' FWL
3	INDEPENDENCE D18-744	40.21680°N	104.58859°W	450' FNL	1157' FEL	NENE	4768'	200' FSL	2255' FEL	200' FNL 2255' FEL
4	INDEPENDENCE D18-739	40.21680°N	104.58851°W	450' FNL	1135' FEL	NENE	4769'	200' FSL	1845' FEL	200' FNL 1890' FEL
5	INDEPENDENCE D18-732	40.21680°N	104.58843°W	450' FNL	1113' FEL	NENE	4770'	200' FSL	1520' FEL	200' FNL 1430' FEL
6	INDEPENDENCE D18-725	40.21680°N	104.58835°W	450' FNL	1090' FEL	NENE	4770'	200' FSL	1090' FEL	200' FNL 990' FEL
7	INDEPENDENCE D18-717	40.21680°N	104.58826°W	450' FNL	1068' FEL	NENE	4770'	200' FSL	550' FEL	200' FNL 450' FEL

7535 Hilltop Circle
Denver, CO 80221
(303) 928-7128
www.ascentgeomatics.com

FIELD DATE:
08-17-17

DRAWN BY:
DNS

DRAWING DATE:
10-12-18

CHECKED BY:
MJE

SURFACE LOCATION:
SEC. 19, T3N, R64W, 6TH P.M.
WELD COUNTY, COLORADO

PUBLICLY AVAILABLE DATA SOURCES HAVE NOT BEEN INDEPENDENTLY VERIFIED BY ASCENT.