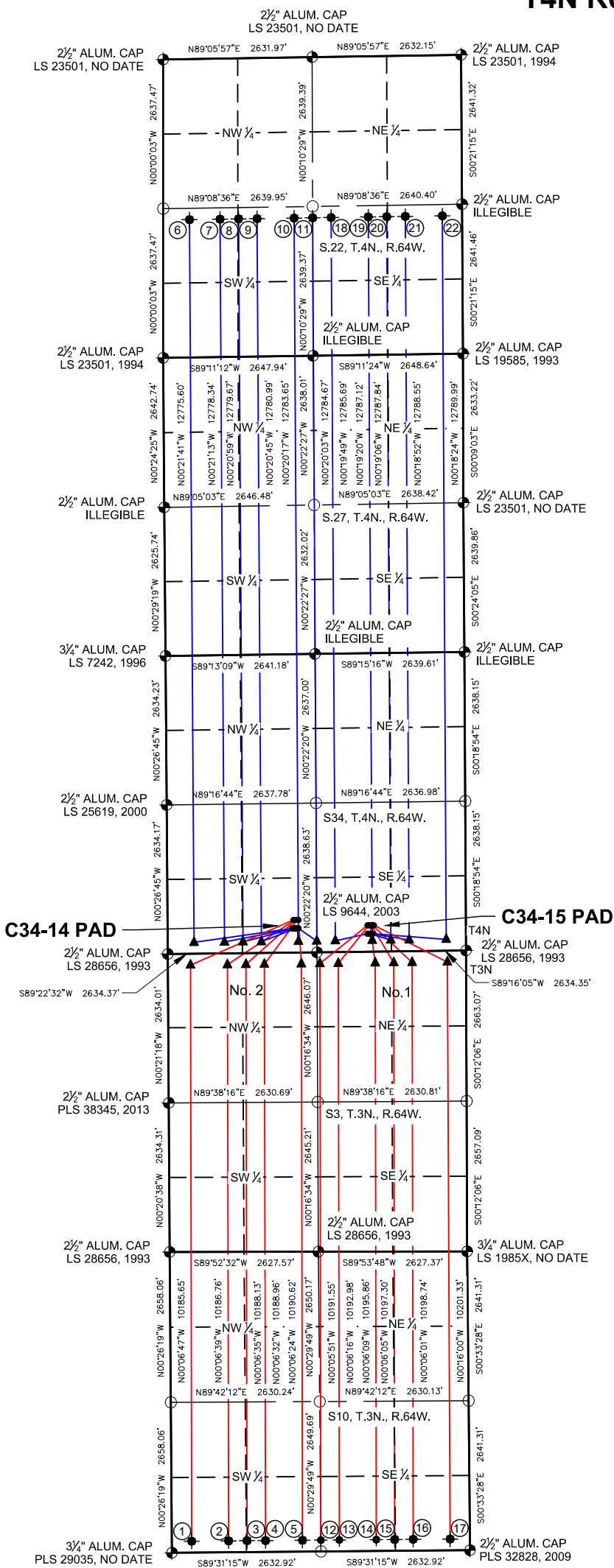
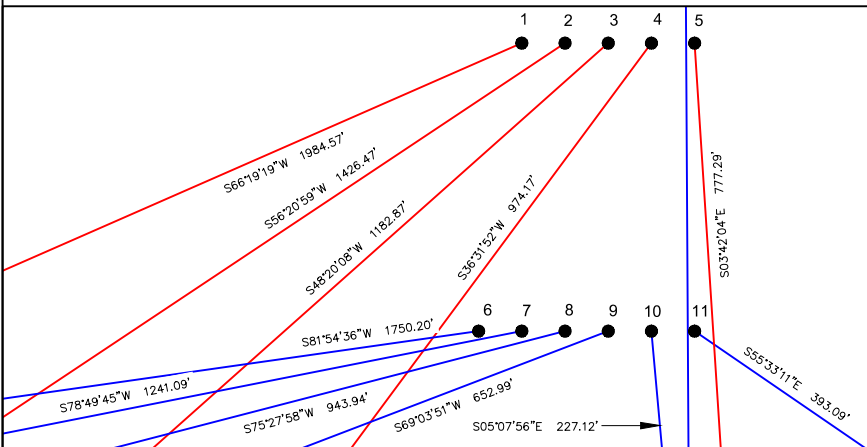


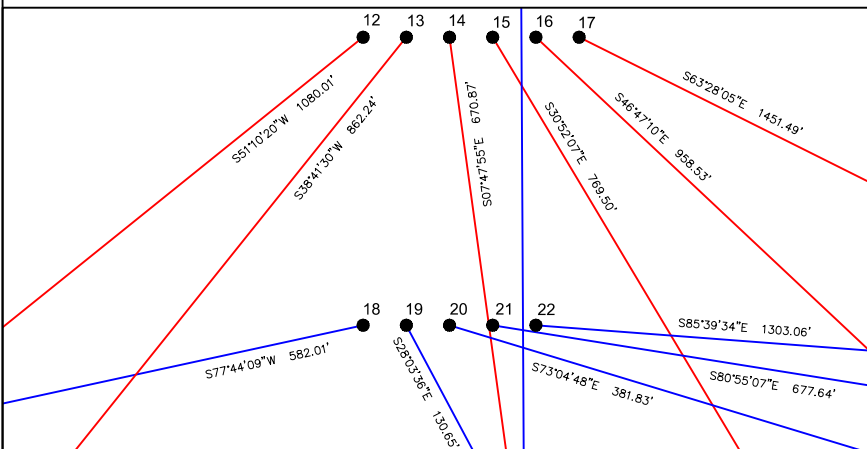
C34-14 PAD & C34-15 PAD
MULTI-WELL LOCATION PLAT / MULTI-WELL PLAN
T4N R64W SECTION 34



PROPOSED WELLBORE DIRECTION DATA
C34-14 PAD
SLOTS 1-11



PROPOSED WELLBORE DIRECTION DATA
C34-15 PAD
SLOTS 12-22



LEGEND

- = FOUND MONUMENT
- = CALCULATED POSITION
- = PROPOSED WELL
- = BOTTOM HOLE
- = TOP OF PRODUCTION ZONE

- Notes:
- 1) All bearings are Grid Bearings of the Colorado State Plane Coordinate System, North Zone, North American Datum 1983/2011. The lineal dimensions as shown herein are grid distances based upon the "U.S. Survey Foot." To get ground distances multiply shown distance by 1.0002648.
 - 2) Distances are measured at 90° from section line of the Sixth Principal Meridian, County of Weld, State of Colorado.
 - 3) Ground elevations are based on an observed GPS elevation (NAVD 1988 DATUM).
 - 4) Surface use for C34-14 Pad: "DRY LAND CROP"
 - 5) Instrument Operator: Alan Hnizdo
 - 6) Surface use for C34-16 Pad: "RANGELAND"
 - 7) Instrument Operator: David Born
 - 8) This map does not represent a boundary survey.

DISCLAIMER:
THIS PLOT DOES NOT REPRESENT A MONUMENTED LAND SURVEY AND SHOULD NOT BE RELIED UPON TO DETERMINE BOUNDARY LINES, PROPERTY OWNERSHIP OR OTHER PROPERTY INTERESTS. PARCEL LINES, IF DEPICTED HAVE NOT BEEN FIELD VERIFIED AND MAY BE BASED UPON PUBLICLY AVAILABLE DATA THAT ALSO HAS NOT BEEN INDEPENDENTLY VERIFIED.

SURFACE HOLE LOCATION							TOP OF PRODUCTIVE ZONE		BOTTOM HOLE LOCATION	
SLOT	WELL NAME	LATITUDE	LONGITUDE	FOOTAGE		QTR-QTR	ELEV.	FOOTAGE		FOOTAGE
1	GITTLEIN D10-785	40.26333°N	104.53858°W	577' FSL	2223' FWL	SESW	4700'	200' FNL	400' FWL	350' FWL
2	GITTLEIN D10-775	40.26333°N	104.53850°W	577' FSL	2246' FWL	SESW	4699'	200' FNL	1053' FWL	1002' FWL
3	GITTLEIN D10-770	40.26333°N	104.53842°W	577' FSL	2268' FWL	SESW	4699'	200' FNL	1379' FWL	1328' FWL
4	GITTLEIN D10-765	40.26333°N	104.53833°W	576' FSL	2291' FWL	SESW	4699'	200' FNL	1705' FWL	1654' FWL
5	GITTLEIN D10-755	40.26333°N	104.53825°W	576' FSL	2313' FWL	SESW	4699'	200' FNL	2358' FWL	2307' FWL
6	GITTLEIN C22-785	40.26292°N	104.53866°W	427' FSL	2200' FWL	SESW	4700'	200' FSL	465' FWL	2437' FSL
7	GITTLEIN C22-775	40.26292°N	104.53858°W	427' FSL	2222' FWL	SESW	4700'	200' FSL	1003' FWL	2438' FSL
8	GITTLEIN C22-770	40.26292°N	104.53850°W	427' FSL	2245' FWL	SESW	4700'	200' FSL	1329' FWL	2438' FSL
9	GITTLEIN C22-765	40.26292°N	104.53842°W	427' FSL	2267' FWL	SESW	4699'	200' FSL	1655' FWL	2438' FSL
10	GITTLEIN C22-755	40.26292°N	104.53834°W	426' FSL	2290' FWL	SESW	4699'	200' FSL	2308' FWL	2439' FSL
11	GITTLEIN C22-750	40.26292°N	104.53826°W	426' FSL	2312' FWL	SESW	4699'	200' FSL	2635' FWL	2439' FSL
12	GUTTERSEN D10-750	40.26303°N	104.53389°W	466' FSL	1738' FEL	SWSE	4697'	200' FNL	2583' FEL	200' FSL
13	GUTTERSEN D10-745	40.26303°N	104.53381°W	466' FSL	1715' FEL	SWSE	4697'	200' FNL	2258' FEL	200' FSL
14	GUTTERSEN D10-735	40.26303°N	104.53373°W	466' FSL	1693' FEL	SWSE	4697'	200' FNL	1605' FEL	200' FSL
15	GUTTERSEN D10-730	40.26303°N	104.53365°W	465' FSL	1670' FEL	SWSE	4697'	200' FNL	1279' FEL	200' FSL
16	GUTTERSEN D10-725	40.26303°N	104.53357°W	465' FSL	1648' FEL	SWSE	4697'	200' FNL	953' FEL	200' FSL
17	GUTTERSEN D10-715	40.26303°N	104.53349°W	465' FSL	1625' FEL	SWSE	4697'	200' FNL	330' FEL	200' FSL
18	GUTTERSEN C22-745	40.26262°N	104.53389°W	316' FSL	1739' FEL	SWSE	4697'	200' FSL	2308' FEL	2439' FSL
19	GUTTERSEN C22-735	40.26262°N	104.53381°W	316' FSL	1716' FEL	SWSE	4697'	200' FSL	1655' FEL	2440' FSL
20	GUTTERSEN C22-730	40.26262°N	104.53373°W	316' FSL	1694' FEL	SWSE	4697'	200' FSL	1329' FEL	2440' FSL
21	GUTTERSEN C22-725	40.26262°N	104.53365°W	315' FSL	1671' FEL	SWSE	4697'	200' FSL	1003' FEL	2440' FSL
22	GUTTERSEN C22-715	40.26262°N	104.53357°W	315' FSL	1649' FEL	SWSE	4697'	200' FSL	350' FEL	2441' FSL



7535 Hilltop Circle
Denver, CO 80221
(303) 928-7128
www.ascentgeomatics.com

FIELD
DATE:
09-26-18

DRAWN BY:
JW

DRAWING
DATE:
09-28-18

CHECKED BY:
VQD

SURFACE LOCATION:
SEC. 34, T4N, R64W, 6TH P.M.
WELD COUNTY, COLORADO

PUBLICLY AVAILABLE DATA SOURCES HAVE NOT
BEEN INDEPENDENTLY VERIFIED BY ASCENT.

