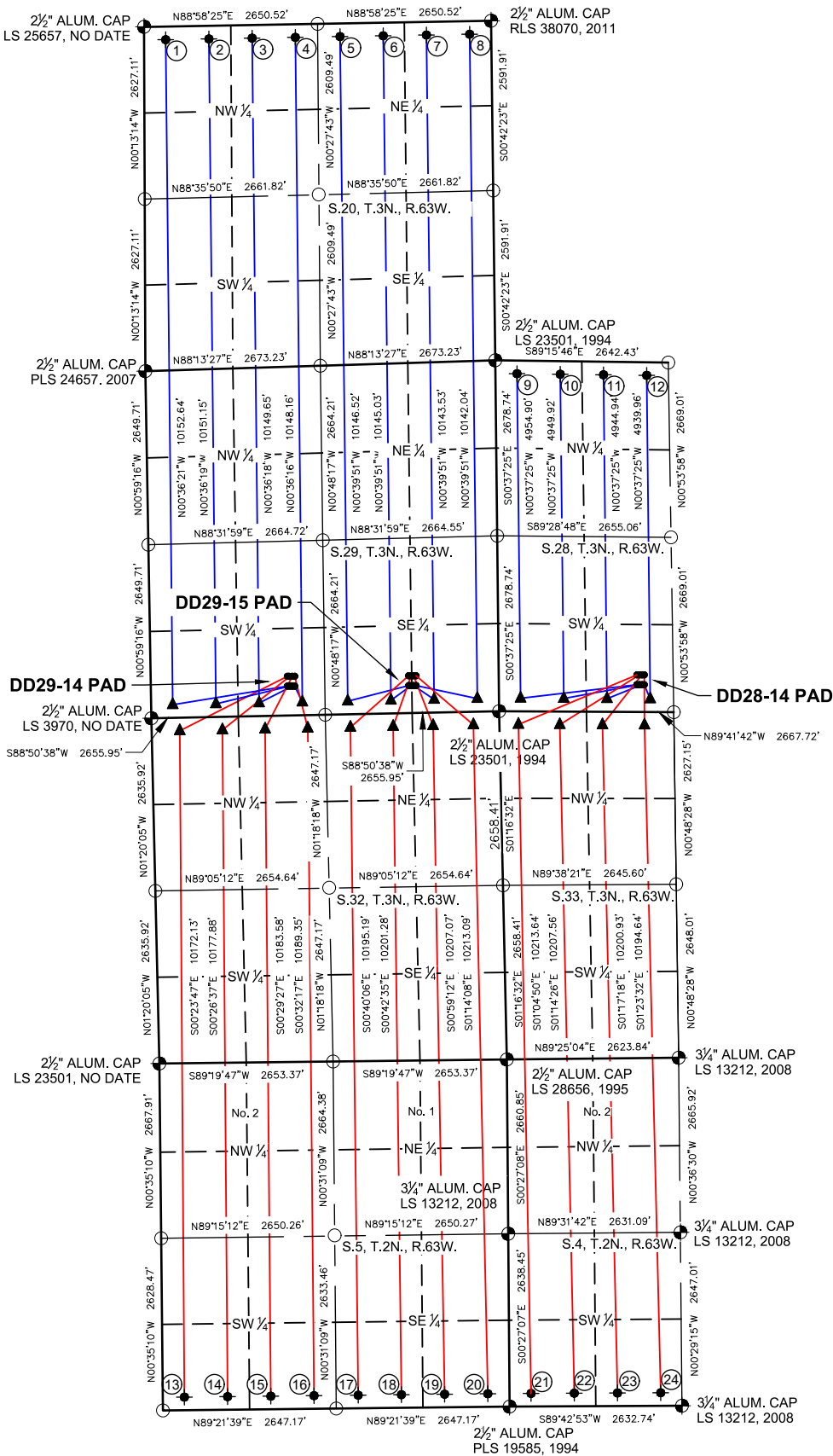
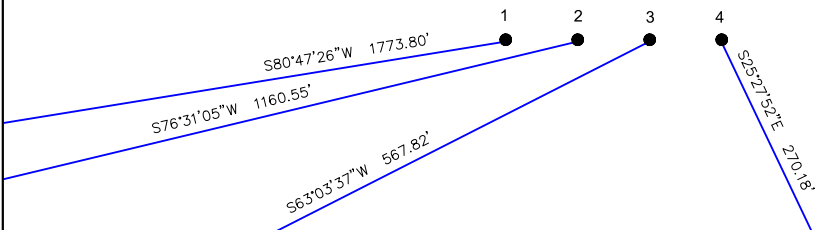


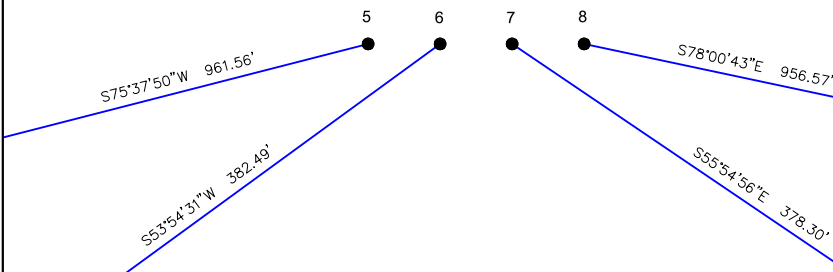
DD28-14 PAD, DD29-14 PAD & DD29-15 PAD
MULTI-WELL LOCATION PLAT / MULTI-WELL PLAN
T3N R63W SECTION 28, 29



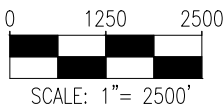
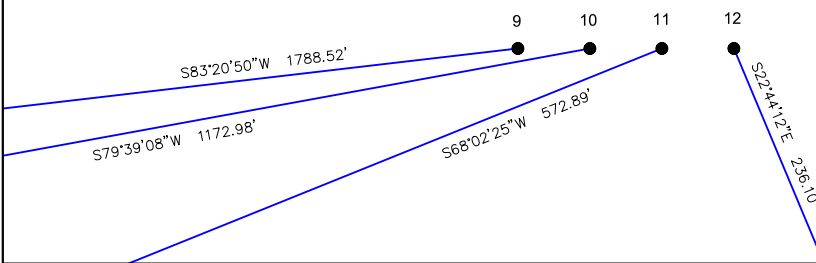
PROPOSED WELLBORE DIRECTION DATA
DD29-14 PAD
SLOTS 1-4



PROPOSED WELLBORE DIRECTION DATA
DD29-15 PAD
SLOTS 5-8



PROPOSED WELLBORE DIRECTION DATA
DD28-14 PAD
SLOTS 9-12



LEGEND

- FOUND MONUMENT
- CALCULATED POSITION
- PROPOSED WELL
- BOTTOM HOLE
- LANDING POINT

- Notes:
- All bearings are Grid Bearings of the Colorado State Plane Coordinate System, North Zone, North American Datum 1983/2011. The lineal dimensions as shown herein are grid distances based upon the "U.S. Survey Foot." To get ground distances multiply shown distance by 1.0002739557.
 - Distances are measured at 90° from section line of the Sixth Principal Meridian, County of Weld, State of Colorado.
 - Ground elevations are based on an observed GPS elevation (NAVD 1988 DATUM).
 - Surface use: "RANGELAND"
 - Instrument Operator: Ian Carabajal
 - This map does not represent a boundary survey.

DISCLAIMER:
THIS PLOT DOES NOT REPRESENT A MONUMENTED LAND SURVEY AND SHOULD NOT BE RELIED UPON TO DETERMINE BOUNDARY LINES, PROPERTY OWNERSHIP OR OTHER PROPERTY INTERESTS. PARCEL LINES, IF DEPICTED HAVE NOT BEEN FIELD VERIFIED AND MAY BE BASED UPON PUBLICLY AVAILABLE DATA THAT ALSO HAS NOT BEEN INDEPENDENTLY VERIFIED.

SHEET 1 OF 2

DP422 SURFACE HOLE LOCATION								DP422 TOP OF PRODUCTIVE ZONE		DP422 BOTTOM HOLE LOCATION	
SLOT	WELL NAME	LATITUDE	LONGITUDE	FOOTAGE		QTR-QTR	ELEV.	FOOTAGE		FOOTAGE	
1	GUTTERSEN STATE DD29-785	40.19041°N	104.46363°W	449' FSL	2086' FWL	SESW	4865'	200' FSL	330' FWL	200' FNL	330' FWL
2	GUTTERSEN STATE DD29-775	40.19041°N	104.46350°W	448' FSL	2123' FWL	SESW	4864'	200' FSL	990' FWL	200' FNL	990' FWL
3	GUTTERSEN STATE DD29-765	40.19041°N	104.46336°W	447' FSL	2161' FWL	SESW	4863'	200' FSL	1650' FWL	200' FNL	1650' FWL
4	GUTTERSEN STATE DD29-755	40.19041°N	104.46323°W	446' FSL	2198' FWL	SESW	4862'	200' FSL	2310' FWL	200' FNL	2310' FWL
5	GUTTERSEN STATE DD29-745	40.19038°N	104.45700°W	420' FSL	1376' FEL	SWSE	4865'	200' FSL	2310' FEL	200' FNL	2310' FEL
6	GUTTERSEN STATE DD29-735	40.19038°N	104.45687°W	419' FSL	1338' FEL	SWSE	4865'	200' FSL	1650' FEL	200' FNL	1650' FEL
7	GUTTERSEN STATE DD29-725	40.19038°N	104.45673°W	418' FSL	1301' FEL	SESE	4864'	200' FSL	990' FEL	200' FNL	990' FEL
8	GUTTERSEN STATE DD29-715	40.19037°N	104.45660°W	418' FSL	1263' FEL	SESE	4864'	200' FSL	330' FEL	200' FNL	330' FEL
9	GUTTERSEN STATE DD28-785	40.19030°N	104.44453°W	417' FSL	2109' FWL	SESW	4804'	200' FSL	330' FWL	200' FNL	330' FWL
10	GUTTERSEN STATE DD28-775	40.19030°N	104.44439°W	417' FSL	2146' FWL	SESW	4804'	200' FSL	990' FWL	200' FNL	990' FWL
11	GUTTERSEN STATE DD28-765	40.19030°N	104.44426°W	417' FSL	2184' FWL	SESW	4803'	200' FSL	1650' FWL	200' FNL	1650' FWL
12	GUTTERSEN STATE DD28-755	40.19030°N	104.44412°W	417' FSL	2221' FWL	SESW	4803'	200' FSL	2310' FWL	200' FNL	2310' FWL



7535 Hilltop Circle
Denver, CO 80221
(303) 928-7128
www.ascentgeomatics.com

FIELD
DATE:
08-02-18

DRAWN BY:
ACM

DRAWING
DATE:
09-14-18

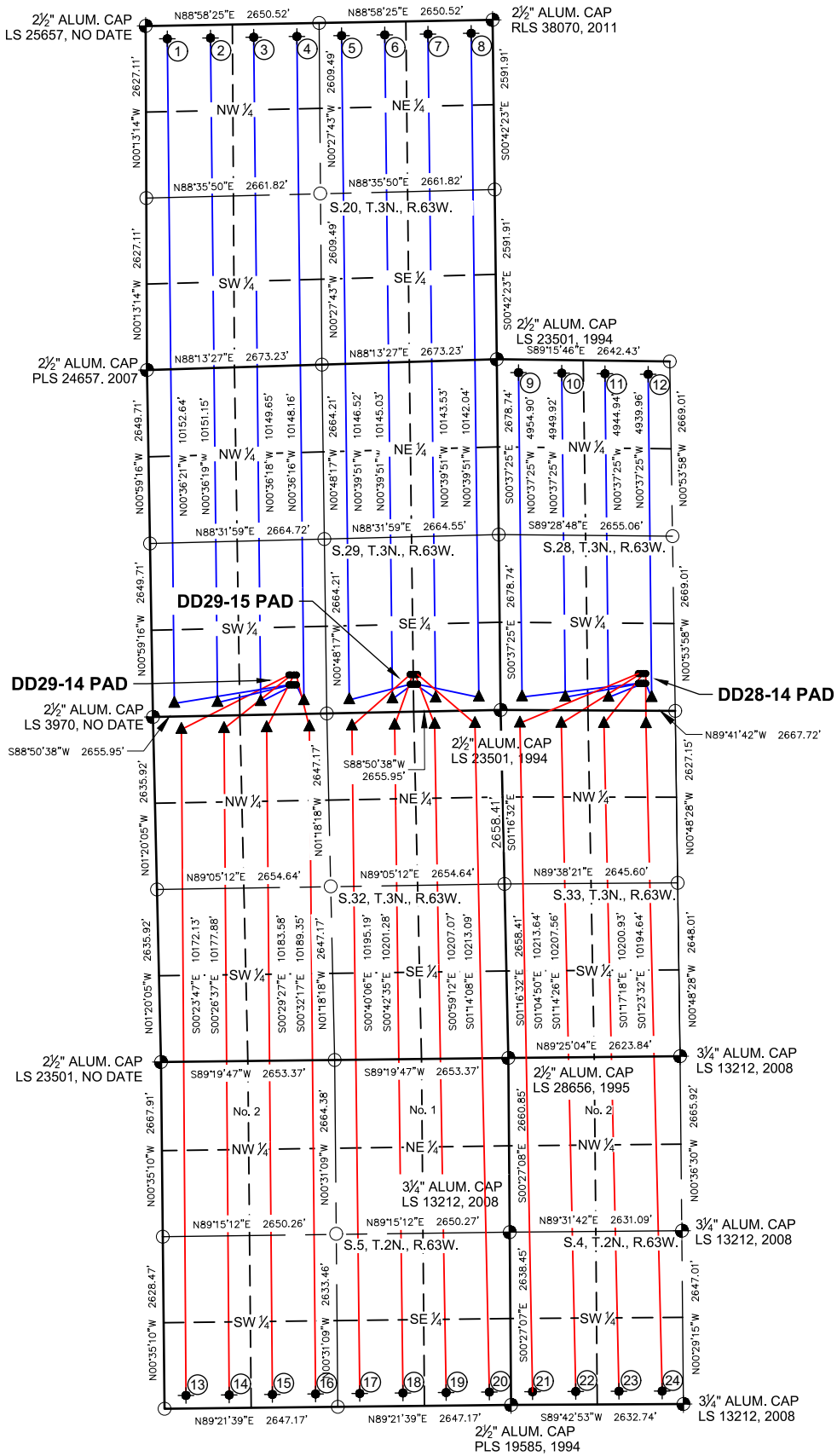
CHECKED BY:
VQD

SURFACE LOCATION:
SEC. 28 & 29, T3N, R63W, 6TH P.M.
WELD COUNTY, COLORADO

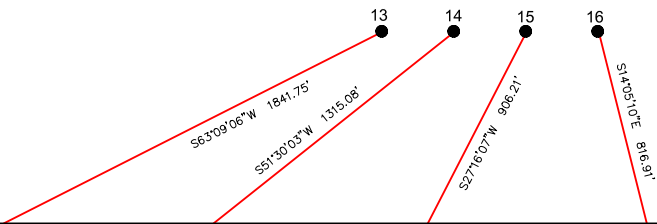
PUBLICLY AVAILABLE DATA SOURCES HAVE NOT
BEEN INDEPENDENTLY VERIFIED BY ASCENT.



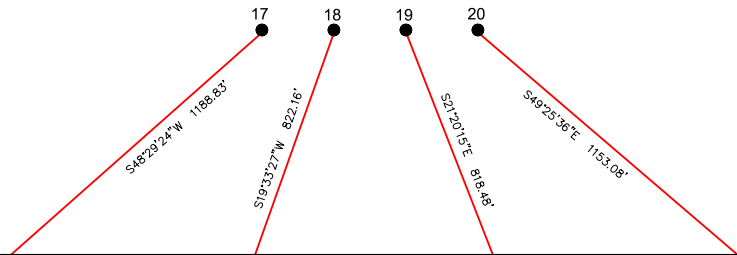
DD28-14 PAD, DD29-14 PAD & DD29-15 PAD
MULTI-WELL LOCATION PLAT / MULTI-WELL PLAN
T3N R63W SECTION 28, 29



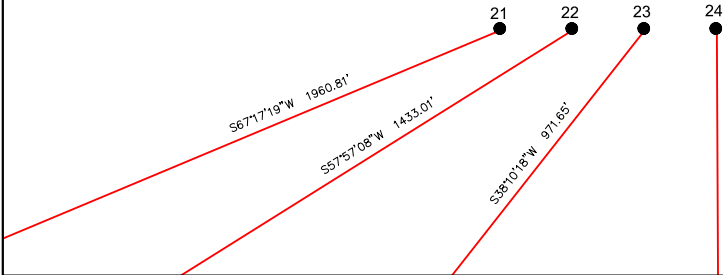
PROPOSED WELLBORE DIRECTION DATA
DD29-14 PAD
SLOTS 13-16



PROPOSED WELLBORE DIRECTION DATA
DD29-15 PAD
SLOTS 17-20



PROPOSED WELLBORE DIRECTION DATA
DD28-14 PAD
SLOTS 21-24



LEGEND

- FOUND MONUMENT
- CALCULATED POSITION
- PROPOSED WELL
- BOTTOM HOLE
- LANDING POINT

- Notes:
- All bearings are Grid Bearings of the Colorado State Plane Coordinate System, North Zone, North American Datum 1983/2011. The lineal dimensions as shown herein are grid distances based upon the "U.S. Survey Foot." To get ground distances multiply shown distance by 1.0002739557.
 - Distances are measured at 90° from section line of the Sixth Principal Meridian, County of Weld, State of Colorado.
 - Ground elevations are based on an observed GPS elevation (NAVD 1988 DATUM).
 - Surface use: "RANGELAND"
 - Instrument Operator: Ian Carabajal
 - This map does not represent a boundary survey.

DISCLAIMER:
THIS PLOT DOES NOT REPRESENT A MONUMENTED LAND SURVEY AND SHOULD NOT BE RELIED UPON TO DETERMINE BOUNDARY LINES, PROPERTY OWNERSHIP OR OTHER PROPERTY INTERESTS. PARCEL LINES, IF DEPICTED HAVE NOT BEEN FIELD VERIFIED AND MAY BE BASED UPON PUBLICLY AVAILABLE DATA THAT ALSO HAS NOT BEEN INDEPENDENTLY VERIFIED.

SHEET 2 OF 2

DP423 SURFACE HOLE LOCATION							DP423 TOP OF PRODUCTIVE ZONE		DP423 BOTTOM HOLE LOCATION	
SLOT	WELL NAME	LATITUDE	LONGITUDE	FOOTAGE		QTR-QTR	ELEV.	FOOTAGE		FOOTAGE
13	GUTTERSEN FEDERAL YY5-785	40.19083°N	104.46363°W	598' FSL	2088' FWL	SESW	4864'	200' FNL	430' FWL	200' FSL 330' FWL
14	GUTTERSEN FEDERAL YY5-775	40.19082°N	104.46349°W	598' FSL	2126' FWL	SESW	4863'	200' FNL	1081' FWL	200' FSL 990' FWL
15	GUTTERSEN FEDERAL YY5-765	40.19082°N	104.46336°W	597' FSL	2163' FWL	SESW	4863'	200' FNL	1733' FWL	200' FSL 1650' FWL
16	GUTTERSEN FEDERAL YY5-755	40.19082°N	104.46322°W	596' FSL	2201' FWL	SESW	4862'	200' FNL	2385' FWL	200' FSL 2310' FWL
17	GUTTERSEN FEDERAL YY5-745	40.19079°N	104.45699°W	570' FSL	1374' FEL	SWSE	4865'	200' FNL	2275' FEL	200' FSL 2310' FEL
18	GUTTERSEN FEDERAL YY5-735	40.19079°N	104.45686°W	569' FSL	1337' FEL	SWSE	4864'	200' FNL	1623' FEL	200' FSL 1650' FEL
19	GUTTERSEN FEDERAL YY5-725	40.19079°N	104.45672°W	568' FSL	1299' FEL	SESE	4862'	200' FNL	1012' FEL	200' FSL 990' FEL
20	GUTTERSEN FEDERAL YY5-715	40.19079°N	104.45659°W	567' FSL	1262' FEL	SESE	4861'	200' FNL	397' FEL	200' FSL 330' FEL
21	GUTTERSEN FEDERAL YY4-785	40.19071°N	104.44452°W	567' FSL	2110' FWL	SESW	4805'	200' FNL	291' FWL	200' FSL 330' FWL
22	GUTTERSEN FEDERAL YY4-775	40.19071°N	104.44439°W	567' FSL	2148' FWL	SESW	4805'	200' FNL	922' FWL	200' FSL 990' FWL
23	GUTTERSEN FEDERAL YY4-765	40.19071°N	104.44425°W	567' FSL	2185' FWL	SESW	4804'	200' FNL	1574' FWL	200' FSL 1650' FWL
24	GUTTERSEN FEDERAL YY4-755	40.19071°N	104.44412°W	567' FSL	2223' FWL	SESW	4804'	200' FNL	2215' FWL	200' FSL 2310' FWL



FIELD DATE:
08-02-18

DRAWN BY:
ACM

DRAWING DATE:
09-14-18

CHECKED BY:
VQD

SURFACE LOCATION:
SEC. 28 & 29, T3N, R63W, 6TH P.M.
WELD COUNTY, COLORADO

PUBLICLY AVAILABLE DATA SOURCES HAVE NOT BEEN INDEPENDENTLY VERIFIED BY ASCENT.

