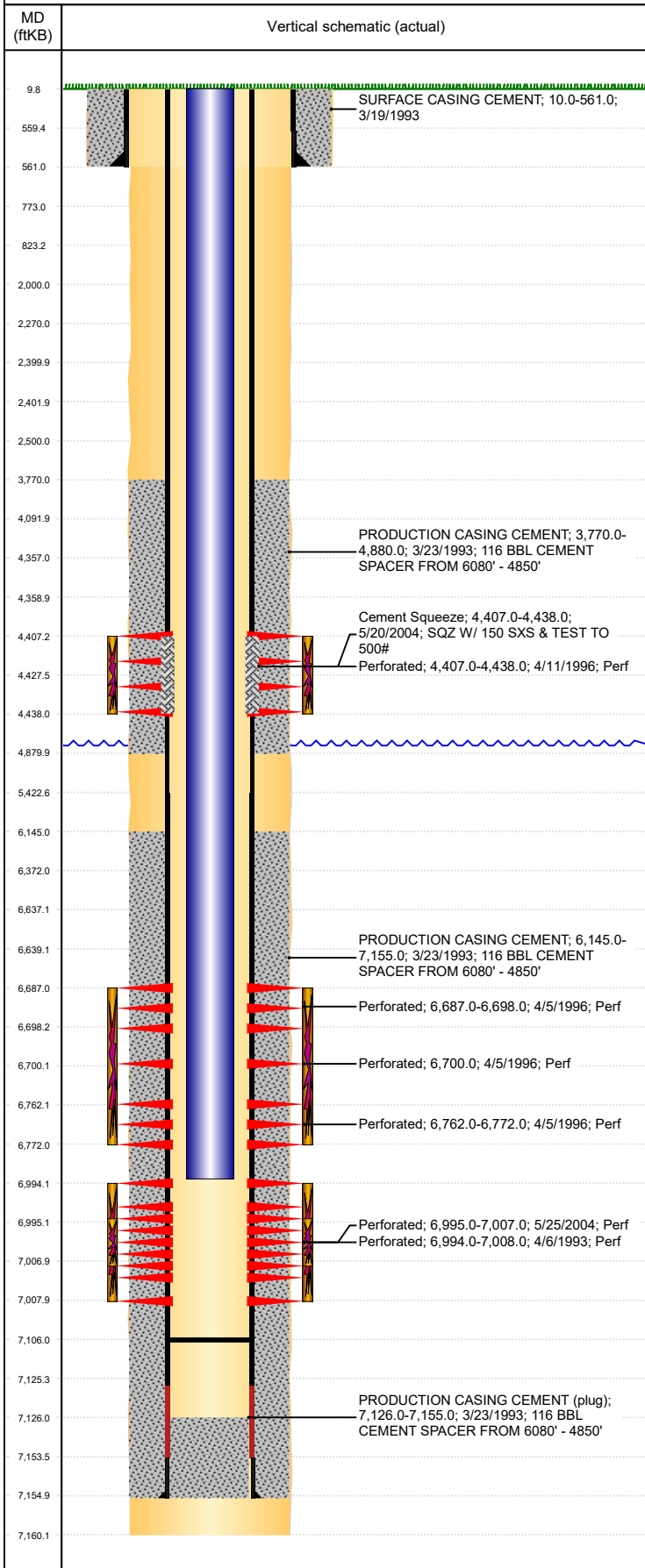


**Well Name: KATE WHITE D29-07**

VERTICAL - ORIGINAL HOLE, 10/3/2018 11:24:34 AM



Well Header									
API 05-123-16416		Business Unit DJ BASIN			District 15		Well Config VERTICAL		
KB - GL / MSL (ft... 10.00		Spud Date 3/18/1993		P & A Date		Well Production Status PR			SoRT No
Comment									
Surface Location (Congressional)									
Qtr 3 SW	Qtr 4 NE	Section 29	Twnshp 3	Twنش... N	Range 64	Rng E/... W	Actual Latitude (°) 40.19796934		Actual Longitude (°) -104.57185310
Wellbore Sections									
Section Des			Size (in)			Act Top, MD (ftKB)		Act Btm, MD (ftKB)	
SURFACE			12 1/4			10		561	
PRODUCTION			7 7/8			561		7,160	
Casing Strings									
Csg Des			Run Date		OD (in)	Wt/Len (lb/ft)	Grade	Top, MD (ftKB)	MD (ftKB)
Surface			3/19/1993		8 5/8	24.00		10.0	561.0
Production			3/23/1993		4 1/2	11.60	J-55	10.0	7,155.0
Cement									
Des					Start Date		Top (ftKB)		Btm (ftKB)
SURFACE CASING CEMENT					3/19/1993		10.0		561.0
PRODUCTION CASING CEMENT					3/23/1993		3,770.0		4,880.0
PRODUCTION CASING CEMENT					3/23/1993		6,145.0		7,155.0
Cement Squeeze					5/20/2004		4,407.0		4,438.0
Zone Statuses									
Zone Name		Status Date	Status	Fluid Type	Job			Prod Method	
CODELL		6/23/1993	PR		DRILLING/COMPLETION - ORIGINAL, 3/18/1993...				
CODELL		6/15/2004	PR		RE-FRAC, 5/18/2004 00:00				
NIOBRARA		7/15/1996	PR		RECOMPLETION, 4/4/1996 00:00				
SUSSEX		7/15/1996	PR		RECOMPLETION, 4/4/1996 00:00				
SUSSEX		5/20/2004	AB		RE-FRAC, 5/18/2004 00:00				
Perforation Data									
Linked Zone			Bnch/Stg	Entered Shot Total	Top (ftKB)		Btm (ftKB)		Date
SUSSEX, ORIGINAL HOLE			A  B  C	32	4,407.00		4,438.00		4/11/1996
NIOBRARA, ORIGINAL HOLE				4	6,687.00		6,698.00		4/5/1996
NIOBRARA, ORIGINAL HOLE				1	6,700.00		6,700.00		4/5/1996
NIOBRARA, ORIGINAL HOLE				6	6,762.00		6,772.00		4/5/1996
CODELL, ORIGINAL HOLE				29	6,994.00		7,008.00		4/6/1993
CODELL, ORIGINAL HOLE				48	6,995.00		7,007.00		5/25/2004
Stimulation Intervals									
Zone				Start Date		Top (ftKB)		Btm (ftKB)	
SUSSEX, ORIGINAL HOLE				4/12/1996		4,407.0		4,438.0	
NIOBRARA, ORIGINAL HOLE				4/8/1996		6,687.0		6,772.0	
CODELL, ORIGINAL HOLE				4/15/1993		6,994.0		7,008.0	
CODELL, ORIGINAL HOLE				6/3/2004		6,995.0		7,007.0	
Other In Hole									
Run Date		Des				OD (in)	Top (ftKB)		Btm (ftKB)
Logs									
Date		Type				Top, MD (ftKB)		Btm, MD (ftKB)	
3/23/1993		COMPENSATED DENSITY				3,700.0		7,182.0	
3/23/1993		INDUCTION				3,700.0		7,182.0	
4/6/1993		CBL/CCL/GR				3,600.0		7,087.0	
5/10/2011		GYRO				10.0		6,900.0	
Plug Back Total Depths									
Date		Type		Com				Depth (ftKB)	
4/15/1996		FILL		C/O SAND				7,126.0	
6/8/2004		FILL		C/O LAND TBG				7,106.0	