

# SRC ENERGY

Location: COLORADO Slot: SLOT#19 SEELEY FEDERAL 39N-30A-L (2132'FNL & 1599'FEL, SEC.26)  
Field: WELD COUNTY (NAD83, TRUE NORTH) Well: SEELEY FEDERAL 39N-30A-L  
Facility: SEC.26-T06N-R66W Wellbore: SEELEY FEDERAL 39N-30A-L PWB

Plot reference wellpath is: SEELEY FEDERAL 39N-30A-L (REV.A.0) PWP	Grid System: NAD83 / Lambert Colorado SP, Northern Zone (501), US feet
True vertical depths are referenced to PROPETRO 12 (4') (RKB)	* = Wellpath was transformed from a different geoidic datum
Measured depths are referenced to PROPETRO 12 (4') (RKB)	North Reference: True north
PROPETRO 12 (4') (RKB) to Mean Sea Level: 4700 feet	Scale: True distance
Mean Sea Level to Mud line (At Slot: SLOT#19 SEELEY FEDERAL 39N-30A-L (2132'FNL & 1599'FEL, SEC.26)): 0 feet	Depths are in feet
Coordinates are in feet referenced to Slot	Created by: doddanna on 2018-05-13
	Database: WellArchitectDB

## Location Information

Facility Name	Grid East (US R)	Grid North (US R)	Latitude	Longitude
SEC.26-T06N-R66W	3211308.457	1412009.161	40°27'42.779"N	104°44'26.117"W
BH	Local N (R)	Local E (R)	Grid East (US R)	Grid North (US R)
SLOT#19 SEELEY FEDERAL 39N-30A-L (2132'FNL & 1599'FEL, SEC.26)	-420.06	-3.65	3211308.406	1411989.105
PROPETRO 12 (4') (RKB) to Mud line (At Slot: SLOT#19 SEELEY FEDERAL 39N-30A-L (2132'FNL & 1599'FEL, SEC.26))				4700R
Mean Sea Level to Mud line (At Slot: SLOT#19 SEELEY FEDERAL 39N-30A-L (2132'FNL & 1599'FEL, SEC.26))				0R
PROPETRO 12 (4') (RKB) to Mean Sea Level				4700R

## Survey Program

Start MD (ft)	End MD (ft)	Tool	Model	Log Name/Comment	Wellbore
4.00	1750.00	BHI NavTrak	BHI NavTrak (Rotating-Axial Corr)		SEELEY FEDERAL 39N-30A-L PWB
1750.00	17793.23	BHI AutoTrak Curve	BHI AutoTrak Curve (IFR1, Short)		SEELEY FEDERAL 39N-30A-L PWB

## Well Profile Data

Design Comment	MD (ft)	Inc (°)	Az (°)	TVD (ft)	Local N (ft)	Local E (ft)	DLS (°/100ft)	VS (ft)
Tie On	4.00	0.000	140.020	4.00	0.00	0.00	0.00	0.00
End of Tangent	200.00	0.000	140.020	200.00	0.00	0.00	0.00	0.00
End of Build (XS)	1059.29	17.186	140.020	1046.46	-98.01	82.18	2.00	93.73
End of Tangent (XS)	6620.80	17.186	140.020	6359.67	-1357.19	1138.01	0.00	1297.96
End of 3D Arc (XS)	7501.93	90.295	90.183	6861.00	-1478.33	1765.77	9.00	1935.91
End of Tangent (XS)	17793.23	90.295	90.183	6808.00	-1511.15	12056.89	0.00	12151.22

## Targets

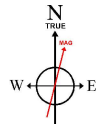
Name	MD (ft)	Inc (°)	Az (°)	TVD (ft)	Local N (ft)	Local E (ft)	DLS (°/100ft)	VS (ft)
SEELEY FEDERAL 39N-30A-L (REV.A.0) PWP	17793.23	90.295	90.183	6808.00	-1511.15	12056.89	0.00	12151.22
SEELEY FEDERAL 39N-30A-L (REV.A.0) PWP	17793.23	90.295	90.183	6808.00	-1511.15	12056.89	0.00	12151.22
SEELEY FEDERAL 39N-30A-L (REV.A.0) PWP	17793.23	90.295	90.183	6808.00	-1511.15	12056.89	0.00	12151.22
SEELEY FEDERAL 39N-30A-L (REV.A.0) PWP	17793.23	90.295	90.183	6808.00	-1511.15	12056.89	0.00	12151.22
SEELEY FEDERAL 39N-30A-L (REV.A.0) PWP	17793.23	90.295	90.183	6808.00	-1511.15	12056.89	0.00	12151.22
SEELEY FEDERAL 39N-30A-L (REV.A.0) PWP	17793.23	90.295	90.183	6808.00	-1511.15	12056.89	0.00	12151.22
SEELEY FEDERAL 39N-30A-L (REV.A.0) PWP	17793.23	90.295	90.183	6808.00	-1511.15	12056.89	0.00	12151.22
SEELEY FEDERAL 39N-30A-L (REV.A.0) PWP	17793.23	90.295	90.183	6808.00	-1511.15	12056.89	0.00	12151.22
SEELEY FEDERAL 39N-30A-L (REV.A.0) PWP	17793.23	90.295	90.183	6808.00	-1511.15	12056.89	0.00	12151.22
SEELEY FEDERAL 39N-30A-L (REV.A.0) PWP	17793.23	90.295	90.183	6808.00	-1511.15	12056.89	0.00	12151.22

## Hole and Casing Sections

Name	Start MD (ft)	End MD (ft)	Start Local N (ft)	End Local N (ft)	Start Local E (ft)	End Local E (ft)	Wellbore
15.5in Open Hole	4.00	1750.00	0.00	1750.00	0.00	-254.40	SEELEY FEDERAL 39N-30A-L PWB
9.875in Casing Surface	4.00	1750.00	0.00	1750.00	0.00	-254.40	SEELEY FEDERAL 39N-30A-L PWB
8.5in Open Hole	1750.00	17793.23	1750.00	6808.00	-254.40	-1511.15	SEELEY FEDERAL 39N-30A-L PWB

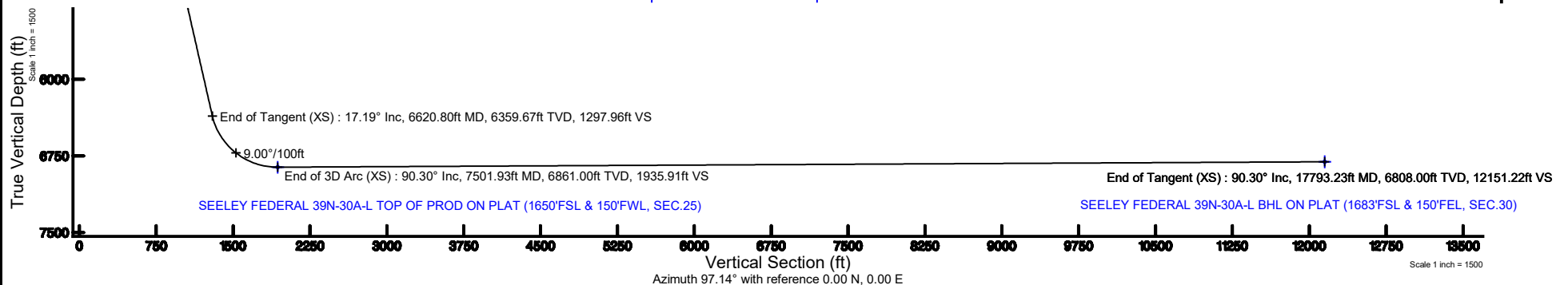
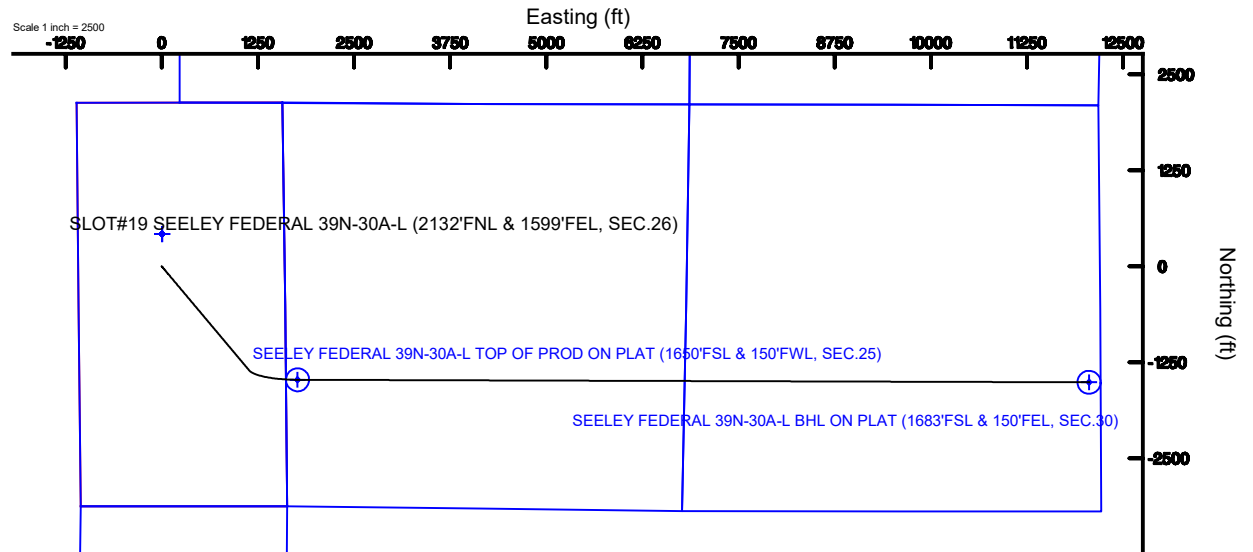


SRC ENERGY



BGGM (1900.0 to 2019.0) Dip: 66.87° Field: 52352.6 nT  
Magnetic North is 8.30 degrees East of True North (at 4/24/2018)

To correct azimuth from Magnetic to True add 8.30 degrees



\_SEELEY\_FEDERAL\_39N-30A-L\_\_REV-A.0\_\_PWP.las

~VERSION INFORMATION

VERS. 2.0 : CWLS LOG ASCII STANDARD-VERSION 2.0

WRAP. NO : ASCII DATA SECTION CONTAINS ONE ROW PER WELLPATH STATION

~WELL INFORMATION

#MNEM	.UNITS	DATA	:DESCRIPTION
#----	.-----	----	:-----
STRT	.ft	0.00	:START MD
STOP	.ft	17793.23	:STOP MD
STEP	.ft	0.0	:STEP (non-uniform
increment)			
NULL	.	-999.99	:NULL
COMP	.	SRC ENERGY	:OPERATOR
WELL	.	SEELEY FEDERAL 39N-30A-L	:WELL
FLD	.	WELD COUNTY (NAD83,TRUE NORTH)	:FIELD
LOC	.	COLORADO	:AREA (aka: Location)
CNTY	.	N/A	:COUNTY
STAT	.	N/A	:STATE
CTRY	.	N/A	:COUNTRY
SRVC	.	Baker Hughes	:CONTRACTOR
DATE	.	04/25/2018	:LOG REV DATE
API	.		:API NUMBER

~OTHER INFORMATION

#Software: WellArchitect(R) Version 5.0

#MNEM	.UNITS	DATA	:DESCRIPTION
#----	.-----	----	:-----
WPTYPE	.	PLANNED WELLPATH	:WELLPATH TYPE
FACILITY	.	SEC.26-T06N-R66W	:FACILITY
SLOT	.	SLOT#19 SEELEY FEDERAL 39N-30A-L (2132'FNL & 1599'FEL,	
SEC.26):SLOT			
WELLBORE	.	SEELEY FEDERAL 39N-30A-L PWB	:WELLBORE
WELLPATH	.	SEELEY FEDERAL 39N-30A-L (REV-A.0) PWP	:WELLPATH
MDREFPT	.	PROPETRO 12 (4') (RKB)	:MD REFERENCE POINT
TVDREFPT	.	PROPETRO 12 (4') (RKB)	:TVD REFERENCE POINT
LCLREFPT	.	Slot	:LOCAL COORDINATE
REFERENCE PT			
VSAZIMUTH.deg		97.14	:VERTICAL SECTION
AZIMUTH			
VSORIGN	.ft	0.00	:VERTICAL SECTION ORIGIN
NORTH			
VSORIGE	.ft	0.00	:VERTICAL SECTION ORIGIN
EAST			

~CURVE (WELLPATH) INFORMATION

#MNEM	.UNITS	:DESCRIPTION
#----	.-----	:-----
DEPT	.ft	:MEASURED DEPTH

\_SEELEY\_FEDERAL\_39N-30A-L\_\_REV-A.0\_\_PWP.las  
 INC .deg :INCLINATION  
 AZI .deg :AZIMUTH  
 TVD .ft :TRUE VERTICAL DEPTH  
 SECT .ft :CROSS SECTION (CURTAIN/VERTICAL)  
 LOCALN .ft :LOCAL NORTH  
 LOCALE .ft :LOCAL EAST  
 LAT .deg :LATITUDE  
 LONG .deg :LONGITUDE  
 DLS .deg/100ft :DOGLEG SEVERITY

~ASCII DATA

0.00	0.00	140.02	0.00	0.00	0.00	0.00	0.00	40.4607300
-104.7406011	0.00							
4.00	0.00	140.02	4.00	0.00	0.00	0.00	0.00	40.4607300
-104.7406011	0.00							
104.00	0.00	140.02	104.00	0.00	0.00	0.00	0.00	40.4607300
-104.7406011	0.00							
200.00	0.00	140.02	200.00	0.00	0.00	0.00	0.00	40.4607300
-104.7406011	0.00							
204.00	0.08	140.02	204.00	0.00	0.00	0.00	0.00	40.4607300
-104.7406011	2.00							
304.00	2.08	140.02	303.98	1.38	-1.45	1.21		40.4607260
-104.7405968	2.00							
404.00	4.08	140.02	403.83	5.32	-5.56	4.66		40.4607147
-104.7405843	2.00							
504.00	6.08	140.02	503.43	11.81	-12.35	10.35		40.4606961
-104.7405639	2.00							
604.00	8.08	140.02	602.66	20.84	-21.79	18.27		40.4606702
-104.7405354	2.00							
704.00	10.08	140.02	701.40	32.41	-33.88	28.41		40.4606370
-104.7404990	2.00							
804.00	12.08	140.02	799.54	46.49	-48.61	40.76		40.4605966
-104.7404546	2.00							
904.00	14.08	140.02	896.94	63.07	-65.95	55.30		40.4605490
-104.7404024	2.00							
1004.00	16.08	140.02	993.49	82.14	-85.89	72.02		40.4604943
-104.7403423	2.00							
1059.29	17.19	140.02	1046.46	93.73	-98.01	82.18		40.4604610
-104.7403058	2.00							
1104.00	17.19	140.02	1089.18	103.42	-108.13	90.67		40.4604332
-104.7402753	0.00							
1204.00	17.19	140.02	1184.71	125.07	-130.78	109.66		40.4603710
-104.7402071	0.00							
1304.00	17.19	140.02	1280.25	146.72	-153.42	128.64		40.4603089
-104.7401388	0.00							
1404.00	17.19	140.02	1375.78	168.37	-176.06	147.62		40.4602467
-104.7400706	0.00							
1504.00	17.19	140.02	1471.32	190.03	-198.70	166.61		40.4601846

\_SEELEY\_FEDERAL\_39N-30A-L\_\_REV-A.0\_\_PWP.las

-104.7400024	0.00						
1604.00	17.19	140.02	1566.85	211.68	-221.34	185.59	40.4601224
-104.7399342	0.00						
1704.00	17.19	140.02	1662.39	233.33	-243.98	204.58	40.4600603
-104.7398659	0.00						
1804.00	17.19	140.02	1757.92	254.99	-266.62	223.56	40.4599982
-104.7397977	0.00						
1904.00	17.19	140.02	1853.46	276.64	-289.26	242.55	40.4599360
-104.7397295	0.00						
2004.00	17.19	140.02	1948.99	298.29	-311.90	261.53	40.4598739
-104.7396613	0.00						
2104.00	17.19	140.02	2044.53	319.94	-334.54	280.52	40.4598117
-104.7395931	0.00						
2204.00	17.19	140.02	2140.06	341.60	-357.19	299.50	40.4597496
-104.7395248	0.00						
2304.00	17.19	140.02	2235.60	363.25	-379.83	318.49	40.4596874
-104.7394566	0.00						
2404.00	17.19	140.02	2331.13	384.90	-402.47	337.47	40.4596253
-104.7393884	0.00						
2504.00	17.19	140.02	2426.67	406.55	-425.11	356.45	40.4595631
-104.7393202	0.00						
2604.00	17.19	140.02	2522.20	428.21	-447.75	375.44	40.4595010
-104.7392520	0.00						
2704.00	17.19	140.02	2617.74	449.86	-470.39	394.42	40.4594388
-104.7391837	0.00						
2804.00	17.19	140.02	2713.28	471.51	-493.03	413.41	40.4593767
-104.7391155	0.00						
2904.00	17.19	140.02	2808.81	493.17	-515.67	432.39	40.4593145
-104.7390473	0.00						
3004.00	17.19	140.02	2904.35	514.82	-538.31	451.38	40.4592524
-104.7389791	0.00						
3104.00	17.19	140.02	2999.88	536.47	-560.95	470.36	40.4591902
-104.7389109	0.00						
3204.00	17.19	140.02	3095.42	558.12	-583.60	489.35	40.4591281
-104.7388426	0.00						
3304.00	17.19	140.02	3190.95	579.78	-606.24	508.33	40.4590659
-104.7387744	0.00						
3404.00	17.19	140.02	3286.49	601.43	-628.88	527.31	40.4590038
-104.7387062	0.00						
3504.00	17.19	140.02	3382.02	623.08	-651.52	546.30	40.4589417
-104.7386380	0.00						
3604.00	17.19	140.02	3477.56	644.74	-674.16	565.28	40.4588795
-104.7385698	0.00						
3704.00	17.19	140.02	3573.09	666.39	-696.80	584.27	40.4588174
-104.7385015	0.00						
3804.00	17.19	140.02	3668.63	688.04	-719.44	603.25	40.4587552
-104.7384333	0.00						
3904.00	17.19	140.02	3764.16	709.69	-742.08	622.24	40.4586931

\_SEELEY\_FEDERAL\_39N-30A-L\_\_REV-A.0\_\_PWP.las

-104.7383651	0.00						
4004.00	17.19	140.02	3859.70	731.35	-764.72	641.22	40.4586309
-104.7382969	0.00						
4104.00	17.19	140.02	3955.23	753.00	-787.36	660.21	40.4585688
-104.7382287	0.00						
4204.00	17.19	140.02	4050.77	774.65	-810.00	679.19	40.4585066
-104.7381604	0.00						
4304.00	17.19	140.02	4146.30	796.31	-832.65	698.18	40.4584445
-104.7380922	0.00						
4404.00	17.19	140.02	4241.84	817.96	-855.29	717.16	40.4583823
-104.7380240	0.00						
4504.00	17.19	140.02	4337.37	839.61	-877.93	736.14	40.4583202
-104.7379558	0.00						
4604.00	17.19	140.02	4432.91	861.26	-900.57	755.13	40.4582580
-104.7378876	0.00						
4704.00	17.19	140.02	4528.44	882.92	-923.21	774.11	40.4581959
-104.7378194	0.00						
4804.00	17.19	140.02	4623.98	904.57	-945.85	793.10	40.4581337
-104.7377511	0.00						
4904.00	17.19	140.02	4719.51	926.22	-968.49	812.08	40.4580716
-104.7376829	0.00						
5004.00	17.19	140.02	4815.05	947.87	-991.13	831.07	40.4580094
-104.7376147	0.00						
5104.00	17.19	140.02	4910.58	969.53	-1013.77	850.05	40.4579473
-104.7375465	0.00						
5204.00	17.19	140.02	5006.12	991.18	-1036.41	869.04	40.4578851
-104.7374783	0.00						
5304.00	17.19	140.02	5101.66	1012.83	-1059.06	888.02	40.4578230
-104.7374100	0.00						
5404.00	17.19	140.02	5197.19	1034.49	-1081.70	907.00	40.4577608
-104.7373418	0.00						
5504.00	17.19	140.02	5292.73	1056.14	-1104.34	925.99	40.4576987
-104.7372736	0.00						
5604.00	17.19	140.02	5388.26	1077.79	-1126.98	944.97	40.4576365
-104.7372054	0.00						
5704.00	17.19	140.02	5483.80	1099.44	-1149.62	963.96	40.4575744
-104.7371372	0.00						
5804.00	17.19	140.02	5579.33	1121.10	-1172.26	982.94	40.4575122
-104.7370690	0.00						
5904.00	17.19	140.02	5674.87	1142.75	-1194.90	1001.93	40.4574501
-104.7370007	0.00						
6004.00	17.19	140.02	5770.40	1164.40	-1217.54	1020.91	40.4573879
-104.7369325	0.00						
6104.00	17.19	140.02	5865.94	1186.06	-1240.18	1039.90	40.4573258
-104.7368643	0.00						
6204.00	17.19	140.02	5961.47	1207.71	-1262.82	1058.88	40.4572636
-104.7367961	0.00						
6304.00	17.19	140.02	6057.01	1229.36	-1285.46	1077.87	40.4572015

\_SEELEY\_FEDERAL\_39N-30A-L\_\_REV-A.0\_\_PWP.las

-104.7367279	0.00						
6404.00	17.19	140.02	6152.54	1251.01	-1308.11	1096.85	40.4571394
-104.7366597	0.00						
6504.00	17.19	140.02	6248.08	1272.67	-1330.75	1115.83	40.4570772
-104.7365915	0.00						
6604.00	17.19	140.02	6343.61	1294.32	-1353.39	1134.82	40.4570151
-104.7365232	0.00						
6620.80	17.19	140.02	6359.67	1297.96	-1357.19	1138.01	40.4570046
-104.7365118	0.00						
6704.00	22.63	124.75	6437.91	1321.18	-1375.76	1159.09	40.4569536
-104.7364360	9.00						
6804.00	30.30	114.08	6527.42	1362.45	-1397.06	1198.01	40.4568952
-104.7362962	9.00						
6904.00	38.51	107.51	6609.88	1417.33	-1416.77	1250.85	40.4568411
-104.7361063	9.00						
7004.00	46.98	102.98	6683.26	1484.46	-1434.38	1316.29	40.4567927
-104.7358711	9.00						
7104.00	55.58	99.57	6745.77	1562.19	-1449.48	1392.74	40.4567513
-104.7355964	9.00						
7204.00	64.25	96.79	6795.86	1648.61	-1461.68	1478.31	40.4567177
-104.7352890	9.00						
7304.00	72.97	94.40	6832.30	1741.59	-1470.69	1570.89	40.4566930
-104.7349563	9.00						
7404.00	81.72	92.22	6854.19	1838.84	-1476.29	1668.19	40.4566776
-104.7346066	9.00						
7501.93	90.30	90.18	6861.00	1935.91	-1478.33	1765.77	40.4566720
-104.7342560	9.00						
7504.00	90.30	90.18	6860.99	1937.96	-1478.34	1767.84	40.4566720
-104.7342486	0.00						
7604.00	90.30	90.18	6860.47	2037.23	-1478.66	1867.84	40.4566711
-104.7338892	0.00						
7704.00	90.30	90.18	6859.96	2136.49	-1478.97	1967.84	40.4566702
-104.7335299	0.00						
7804.00	90.30	90.18	6859.44	2235.75	-1479.29	2067.83	40.4566693
-104.7331706	0.00						
7904.00	90.30	90.18	6858.93	2335.01	-1479.61	2167.83	40.4566684
-104.7328112	0.00						
8004.00	90.30	90.18	6858.41	2434.27	-1479.93	2267.83	40.4566675
-104.7324519	0.00						
8104.00	90.30	90.18	6857.90	2533.53	-1480.25	2367.83	40.4566666
-104.7320926	0.00						
8204.00	90.30	90.18	6857.38	2632.80	-1480.57	2467.83	40.4566657
-104.7317332	0.00						
8304.00	90.30	90.18	6856.87	2732.06	-1480.89	2567.82	40.4566648
-104.7313739	0.00						
8404.00	90.30	90.18	6856.35	2831.32	-1481.21	2667.82	40.4566639
-104.7310146	0.00						
8504.00	90.30	90.18	6855.84	2930.58	-1481.53	2767.82	40.4566630

\_SEELEY\_FEDERAL\_39N-30A-L\_\_REV-A.0\_\_PWP.las

-104.7306552	0.00						
8604.00	90.30	90.18	6855.32	3029.84	-1481.84	2867.82	40.4566621
-104.7302959	0.00						
8704.00	90.30	90.18	6854.81	3129.10	-1482.16	2967.82	40.4566612
-104.7299366	0.00						
8804.00	90.30	90.18	6854.29	3228.36	-1482.48	3067.82	40.4566603
-104.7295772	0.00						
8904.00	90.30	90.18	6853.78	3327.63	-1482.80	3167.81	40.4566593
-104.7292179	0.00						
9004.00	90.30	90.18	6853.26	3426.89	-1483.12	3267.81	40.4566584
-104.7288586	0.00						
9104.00	90.30	90.18	6852.75	3526.15	-1483.44	3367.81	40.4566575
-104.7284992	0.00						
9204.00	90.30	90.18	6852.23	3625.41	-1483.76	3467.81	40.4566566
-104.7281399	0.00						
9304.00	90.30	90.18	6851.72	3724.67	-1484.08	3567.81	40.4566557
-104.7277806	0.00						
9404.00	90.30	90.18	6851.20	3823.93	-1484.40	3667.80	40.4566548
-104.7274212	0.00						
9504.00	90.30	90.18	6850.69	3923.20	-1484.72	3767.80	40.4566539
-104.7270619	0.00						
9604.00	90.30	90.18	6850.17	4022.46	-1485.03	3867.80	40.4566529
-104.7267026	0.00						
9704.00	90.30	90.18	6849.66	4121.72	-1485.35	3967.80	40.4566520
-104.7263432	0.00						
9804.00	90.30	90.18	6849.14	4220.98	-1485.67	4067.80	40.4566511
-104.7259839	0.00						
9904.00	90.30	90.18	6848.63	4320.24	-1485.99	4167.80	40.4566502
-104.7256246	0.00						
10004.00	90.30	90.18	6848.11	4419.50	-1486.31	4267.79	40.4566493
-104.7252652	0.00						
10104.00	90.30	90.18	6847.60	4518.76	-1486.63	4367.79	40.4566483
-104.7249059	0.00						
10204.00	90.30	90.18	6847.08	4618.03	-1486.95	4467.79	40.4566474
-104.7245466	0.00						
10304.00	90.30	90.18	6846.57	4717.29	-1487.27	4567.79	40.4566465
-104.7241872	0.00						
10404.00	90.30	90.18	6846.05	4816.55	-1487.59	4667.79	40.4566456
-104.7238279	0.00						
10504.00	90.30	90.18	6845.54	4915.81	-1487.90	4767.78	40.4566446
-104.7234686	0.00						
10604.00	90.30	90.18	6845.02	5015.07	-1488.22	4867.78	40.4566437
-104.7231092	0.00						
10704.00	90.30	90.18	6844.51	5114.33	-1488.54	4967.78	40.4566428
-104.7227499	0.00						
10804.00	90.30	90.18	6843.99	5213.60	-1488.86	5067.78	40.4566418
-104.7223906	0.00						
10904.00	90.30	90.18	6843.48	5312.86	-1489.18	5167.78	40.4566409

\_SEELEY\_FEDERAL\_39N-30A-L\_\_REV-A.0\_\_PWP.las

-104.7220312	0.00						
11004.00	90.30	90.18	6842.96	5412.12	-1489.50	5267.78	40.4566400
-104.7216719	0.00						
11104.00	90.30	90.18	6842.45	5511.38	-1489.82	5367.77	40.4566390
-104.7213126	0.00						
11204.00	90.30	90.18	6841.93	5610.64	-1490.14	5467.77	40.4566381
-104.7209532	0.00						
11304.00	90.30	90.18	6841.42	5709.90	-1490.46	5567.77	40.4566372
-104.7205939	0.00						
11404.00	90.30	90.18	6840.90	5809.16	-1490.77	5667.77	40.4566362
-104.7202346	0.00						
11504.00	90.30	90.18	6840.39	5908.43	-1491.09	5767.77	40.4566353
-104.7198753	0.00						
11604.00	90.30	90.18	6839.87	6007.69	-1491.41	5867.76	40.4566343
-104.7195159	0.00						
11704.00	90.30	90.18	6839.36	6106.95	-1491.73	5967.76	40.4566334
-104.7191566	0.00						
11804.00	90.30	90.18	6838.84	6206.21	-1492.05	6067.76	40.4566325
-104.7187973	0.00						
11904.00	90.30	90.18	6838.33	6305.47	-1492.37	6167.76	40.4566315
-104.7184379	0.00						
12004.00	90.30	90.18	6837.81	6404.73	-1492.69	6267.76	40.4566306
-104.7180786	0.00						
12104.00	90.30	90.18	6837.30	6503.99	-1493.01	6367.76	40.4566296
-104.7177193	0.00						
12204.00	90.30	90.18	6836.78	6603.26	-1493.33	6467.75	40.4566287
-104.7173599	0.00						
12304.00	90.30	90.18	6836.27	6702.52	-1493.64	6567.75	40.4566277
-104.7170006	0.00						
12404.00	90.30	90.18	6835.75	6801.78	-1493.96	6667.75	40.4566268
-104.7166413	0.00						
12504.00	90.30	90.18	6835.24	6901.04	-1494.28	6767.75	40.4566258
-104.7162819	0.00						
12604.00	90.30	90.18	6834.72	7000.30	-1494.60	6867.75	40.4566249
-104.7159226	0.00						
12704.00	90.30	90.18	6834.21	7099.56	-1494.92	6967.74	40.4566239
-104.7155633	0.00						
12804.00	90.30	90.18	6833.69	7198.83	-1495.24	7067.74	40.4566230
-104.7152039	0.00						
12904.00	90.30	90.18	6833.18	7298.09	-1495.56	7167.74	40.4566220
-104.7148446	0.00						
13004.00	90.30	90.18	6832.66	7397.35	-1495.88	7267.74	40.4566211
-104.7144853	0.00						
13104.00	90.30	90.18	6832.15	7496.61	-1496.20	7367.74	40.4566201
-104.7141259	0.00						
13204.00	90.30	90.18	6831.63	7595.87	-1496.52	7467.73	40.4566192
-104.7137666	0.00						
13304.00	90.30	90.18	6831.12	7695.13	-1496.83	7567.73	40.4566182



\_SEELEY\_FEDERAL\_39N-30A-L\_\_REV-A.0\_\_PWP.las

-104.7134073	0.00						
13404.00	90.30	90.18	6830.60	7794.39	-1497.15	7667.73	40.4566172
-104.7130479	0.00						
13504.00	90.30	90.18	6830.09	7893.66	-1497.47	7767.73	40.4566163
-104.7126886	0.00						
13604.00	90.30	90.18	6829.57	7992.92	-1497.79	7867.73	40.4566153
-104.7123293	0.00						
13704.00	90.30	90.18	6829.06	8092.18	-1498.11	7967.73	40.4566144
-104.7119699	0.00						
13804.00	90.30	90.18	6828.54	8191.44	-1498.43	8067.72	40.4566134
-104.7116106	0.00						
13904.00	90.30	90.18	6828.03	8290.70	-1498.75	8167.72	40.4566124
-104.7112513	0.00						
14004.00	90.30	90.18	6827.51	8389.96	-1499.07	8267.72	40.4566115
-104.7108919	0.00						
14104.00	90.30	90.18	6827.00	8489.23	-1499.39	8367.72	40.4566105
-104.7105326	0.00						
14204.00	90.30	90.18	6826.48	8588.49	-1499.70	8467.72	40.4566095
-104.7101733	0.00						
14304.00	90.30	90.18	6825.97	8687.75	-1500.02	8567.71	40.4566085
-104.7098139	0.00						
14404.00	90.30	90.18	6825.45	8787.01	-1500.34	8667.71	40.4566076
-104.7094546	0.00						
14504.00	90.30	90.18	6824.94	8886.27	-1500.66	8767.71	40.4566066
-104.7090953	0.00						
14604.00	90.30	90.18	6824.42	8985.53	-1500.98	8867.71	40.4566056
-104.7087359	0.00						
14704.00	90.30	90.18	6823.91	9084.79	-1501.30	8967.71	40.4566047
-104.7083766	0.00						
14804.00	90.30	90.18	6823.39	9184.06	-1501.62	9067.71	40.4566037
-104.7080173	0.00						
14904.00	90.30	90.18	6822.88	9283.32	-1501.94	9167.70	40.4566027
-104.7076579	0.00						
15004.00	90.30	90.18	6822.36	9382.58	-1502.26	9267.70	40.4566017
-104.7072986	0.00						
15104.00	90.30	90.18	6821.85	9481.84	-1502.57	9367.70	40.4566007
-104.7069393	0.00						
15204.00	90.30	90.18	6821.33	9581.10	-1502.89	9467.70	40.4565998
-104.7065800	0.00						
15304.00	90.30	90.18	6820.82	9680.36	-1503.21	9567.70	40.4565988
-104.7062206	0.00						
15404.00	90.30	90.18	6820.30	9779.63	-1503.53	9667.69	40.4565978
-104.7058613	0.00						
15504.00	90.30	90.18	6819.79	9878.89	-1503.85	9767.69	40.4565968
-104.7055020	0.00						
15604.00	90.30	90.18	6819.27	9978.15	-1504.17	9867.69	40.4565958
-104.7051426	0.00						
15704.00	90.30	90.18	6818.76	10077.41	-1504.49	9967.69	40.4565948

\_SEELEY\_FEDERAL\_39N-30A-L\_\_REV-A.0\_\_PWP.las

-104.7047833	0.00						
15804.00	90.30	90.18	6818.24	10176.67	-1504.81	10067.69	40.4565939
-104.7044240	0.00						
15904.00	90.30	90.18	6817.73	10275.93	-1505.13	10167.69	40.4565929
-104.7040646	0.00						
16004.00	90.30	90.18	6817.21	10375.19	-1505.44	10267.68	40.4565919
-104.7037053	0.00						
16104.00	90.30	90.18	6816.70	10474.46	-1505.76	10367.68	40.4565909
-104.7033460	0.00						
16204.00	90.30	90.18	6816.18	10573.72	-1506.08	10467.68	40.4565899
-104.7029866	0.00						
16304.00	90.30	90.18	6815.67	10672.98	-1506.40	10567.68	40.4565889
-104.7026273	0.00						
16404.00	90.30	90.18	6815.15	10772.24	-1506.72	10667.68	40.4565879
-104.7022680	0.00						
16504.00	90.30	90.18	6814.64	10871.50	-1507.04	10767.67	40.4565869
-104.7019086	0.00						
16604.00	90.30	90.18	6814.12	10970.76	-1507.36	10867.67	40.4565859
-104.7015493	0.00						
16704.00	90.30	90.18	6813.61	11070.03	-1507.68	10967.67	40.4565849
-104.7011900	0.00						
16804.00	90.30	90.18	6813.09	11169.29	-1508.00	11067.67	40.4565839
-104.7008306	0.00						
16904.00	90.30	90.18	6812.58	11268.55	-1508.31	11167.67	40.4565829
-104.7004713	0.00						
17004.00	90.30	90.18	6812.06	11367.81	-1508.63	11267.67	40.4565819
-104.7001120	0.00						
17104.00	90.30	90.18	6811.55	11467.07	-1508.95	11367.66	40.4565809
-104.6997526	0.00						
17204.00	90.30	90.18	6811.03	11566.33	-1509.27	11467.66	40.4565799
-104.6993933	0.00						
17304.00	90.30	90.18	6810.52	11665.59	-1509.59	11567.66	40.4565789
-104.6990340	0.00						
17404.00	90.30	90.18	6810.00	11764.86	-1509.91	11667.66	40.4565779
-104.6986746	0.00						
17504.00	90.30	90.18	6809.49	11864.12	-1510.23	11767.66	40.4565769
-104.6983153	0.00						
17604.00	90.30	90.18	6808.97	11963.38	-1510.55	11867.65	40.4565759
-104.6979560	0.00						
17704.00	90.30	90.18	6808.46	12062.64	-1510.87	11967.65	40.4565749
-104.6975966	0.00						
17793.23	90.30	90.18	6808.00	12151.22	-1511.15	12056.89	40.4565740
-104.6972760	0.00						



# Planned Wellpath Report

## SEELEY FEDERAL 39N-30A-L (REV-A.0) PWP

Page 1 of 9



REFERENCE WELLPATH IDENTIFICATION			
Operator	SRC ENERGY	Slot	SLOT#19 SEELEY FEDERAL 39N-30A-L (2132'FNL & 1599'FEL, SEC.26)
Area	COLORADO	Well	SEELEY FEDERAL 39N-30A-L
Field	WELD COUNTY (NAD83,TRUE NORTH)	Wellbore	SEELEY FEDERAL 39N-30A-L PWB
Facility	SEC.26-T06N-R66W		

REPORT SETUP INFORMATION			
Projection System	NAD83 / Lambert Colorado SP, Northern Zone (501), US feet	Software System	WellArchitect® 5.0
North Reference	True	User	Doddanna
Scale	0.999964	Report Generated	5/14/2018 at 9:15:08 AM
Convergence at slot	0.49° East	Database/Source file	WellArchitectDB/_SEELEY_FEDERAL_39N-30A-L_REV-A.0_PWP.xml

WELLPATH LOCATION						
	Local coordinates		Grid coordinates		Geographic coordinates	
	North[ft]	East[ft]	Easting[US ft]	Northing[US ft]	Latitude	Longitude
Slot Location	-420.06	-3.65	3211308.41	1411589.11	40°27'38.628"N	104°44'26.164"W
Facility Reference Pt			3211308.46	1412009.16	40°27'42.779"N	104°44'26.117"W
Field Reference Pt			3171284.48	1426358.81	40°30'07.643"N	104°53'02.634"W

WELLPATH DATUM			
Calculation method	Minimum curvature	PROPETRO 12 (4') (RKB) to Facility Vertical Datum	4700.00ft
Horizontal Reference Pt	Slot	PROPETRO 12 (4') (RKB) to Mean Sea Level	4700.00ft
Vertical Reference Pt	PROPETRO 12 (4') (RKB)	PROPETRO 12 (4') (RKB) to Mud Line at Slot (SLOT#19 SEELEY FEDERAL 39N-30A-L (2132'FNL & 1599'FEL, SEC.26))	4700.00ft
MD Reference Pt	PROPETRO 12 (4') (RKB)	Section Origin	N 0.00, E 0.00 ft
Field Vertical Reference	Mean Sea Level	Section Azimuth	97.14°



# Planned Wellpath Report

## SEELEY FEDERAL 39N-30A-L (REV-A.0) PWP

Page 2 of 9



REFERENCE WELLPATH IDENTIFICATION			
Operator	SRC ENERGY	Slot	SLOT#19 SEELEY FEDERAL 39N-30A-L (2132'FNL & 1599'FEL, SEC.26)
Area	COLORADO	Well	SEELEY FEDERAL 39N-30A-L
Field	WELD COUNTY (NAD83,TRUE NORTH)	Wellbore	SEELEY FEDERAL 39N-30A-L PWB
Facility	SEC.26-T06N-R66W		

WELLPATH DATA (184 stations) † = interpolated/extrapolated station								Comments
MD [ft]	Inclination [°]	Azimuth [°]	TVD [ft]	Vert Sect [ft]	North [ft]	East [ft]	DLS [°/100ft]	
0.00†	0.000	140.020	0.00	0.00	0.00	0.00	0.00	
4.00	0.000	140.020	4.00	0.00	0.00	0.00	0.00	Tie On
104.00†	0.000	140.020	104.00	0.00	0.00	0.00	0.00	
200.00	0.000	140.020	200.00	0.00	0.00	0.00	0.00	End of Tangent
204.00†	0.080	140.020	204.00	0.00	0.00	0.00	2.00	
304.00†	2.080	140.020	303.98	1.38	-1.45	1.21	2.00	
404.00†	4.080	140.020	403.83	5.32	-5.56	4.66	2.00	
504.00†	6.080	140.020	503.43	11.81	-12.35	10.35	2.00	
604.00†	8.080	140.020	602.66	20.84	-21.79	18.27	2.00	
704.00†	10.080	140.020	701.40	32.41	-33.88	28.41	2.00	
804.00†	12.080	140.020	799.54	46.49	-48.61	40.76	2.00	
904.00†	14.080	140.020	896.94	63.07	-65.95	55.30	2.00	
1004.00†	16.080	140.020	993.49	82.14	-85.89	72.02	2.00	
1059.29	17.186	140.020	1046.46	93.73	-98.01	82.18	2.00	End of Build (XS)
1104.00†	17.186	140.020	1089.18	103.42	-108.13	90.67	0.00	
1204.00†	17.186	140.020	1184.71	125.07	-130.78	109.66	0.00	
1304.00†	17.186	140.020	1280.25	146.72	-153.42	128.64	0.00	
1404.00†	17.186	140.020	1375.78	168.37	-176.06	147.62	0.00	
1504.00†	17.186	140.020	1471.32	190.03	-198.70	166.61	0.00	
1604.00†	17.186	140.020	1566.85	211.68	-221.34	185.59	0.00	
1704.00†	17.186	140.020	1662.39	233.33	-243.98	204.58	0.00	
1804.00†	17.186	140.020	1757.92	254.99	-266.62	223.56	0.00	
1904.00†	17.186	140.020	1853.46	276.64	-289.26	242.55	0.00	
2004.00†	17.186	140.020	1948.99	298.29	-311.90	261.53	0.00	
2104.00†	17.186	140.020	2044.53	319.94	-334.54	280.52	0.00	
2204.00†	17.186	140.020	2140.06	341.60	-357.19	299.50	0.00	
2304.00†	17.186	140.020	2235.60	363.25	-379.83	318.49	0.00	
2404.00†	17.186	140.020	2331.13	384.90	-402.47	337.47	0.00	
2504.00†	17.186	140.020	2426.67	406.55	-425.11	356.45	0.00	
2604.00†	17.186	140.020	2522.20	428.21	-447.75	375.44	0.00	



# Planned Wellpath Report

## SEELEY FEDERAL 39N-30A-L (REV-A.0) PWP

Page 3 of 9



REFERENCE WELLPATH IDENTIFICATION			
Operator	SRC ENERGY	Slot	SLOT#19 SEELEY FEDERAL 39N-30A-L (2132'FNL & 1599'FEL, SEC.26)
Area	COLORADO	Well	SEELEY FEDERAL 39N-30A-L
Field	WELD COUNTY (NAD83,TRUE NORTH)	Wellbore	SEELEY FEDERAL 39N-30A-L PWB
Facility	SEC.26-T06N-R66W		

WELLPATH DATA (184 stations) † = interpolated/extrapolated station								
MD [ft]	Inclination [°]	Azimuth [°]	TVD [ft]	Vert Sect [ft]	North [ft]	East [ft]	DLS [°/100ft]	Comments
2704.00†	17.186	140.020	2617.74	449.86	-470.39	394.42	0.00	
2804.00†	17.186	140.020	2713.28	471.51	-493.03	413.41	0.00	
2904.00†	17.186	140.020	2808.81	493.17	-515.67	432.39	0.00	
3004.00†	17.186	140.020	2904.35	514.82	-538.31	451.38	0.00	
3104.00†	17.186	140.020	2999.88	536.47	-560.95	470.36	0.00	
3204.00†	17.186	140.020	3095.42	558.12	-583.60	489.35	0.00	
3304.00†	17.186	140.020	3190.95	579.78	-606.24	508.33	0.00	
3404.00†	17.186	140.020	3286.49	601.43	-628.88	527.31	0.00	
3504.00†	17.186	140.020	3382.02	623.08	-651.52	546.30	0.00	
3604.00†	17.186	140.020	3477.56	644.74	-674.16	565.28	0.00	
3704.00†	17.186	140.020	3573.09	666.39	-696.80	584.27	0.00	
3804.00†	17.186	140.020	3668.63	688.04	-719.44	603.25	0.00	
3904.00†	17.186	140.020	3764.16	709.69	-742.08	622.24	0.00	
4004.00†	17.186	140.020	3859.70	731.35	-764.72	641.22	0.00	
4104.00†	17.186	140.020	3955.23	753.00	-787.36	660.21	0.00	
4204.00†	17.186	140.020	4050.77	774.65	-810.00	679.19	0.00	
4304.00†	17.186	140.020	4146.30	796.31	-832.65	698.18	0.00	
4404.00†	17.186	140.020	4241.84	817.96	-855.29	717.16	0.00	
4504.00†	17.186	140.020	4337.37	839.61	-877.93	736.14	0.00	
4604.00†	17.186	140.020	4432.91	861.26	-900.57	755.13	0.00	
4704.00†	17.186	140.020	4528.44	882.92	-923.21	774.11	0.00	
4804.00†	17.186	140.020	4623.98	904.57	-945.85	793.10	0.00	
4904.00†	17.186	140.020	4719.51	926.22	-968.49	812.08	0.00	
5004.00†	17.186	140.020	4815.05	947.87	-991.13	831.07	0.00	
5104.00†	17.186	140.020	4910.58	969.53	-1013.77	850.05	0.00	
5204.00†	17.186	140.020	5006.12	991.18	-1036.41	869.04	0.00	
5304.00†	17.186	140.020	5101.66	1012.83	-1059.06	888.02	0.00	
5404.00†	17.186	140.020	5197.19	1034.49	-1081.70	907.00	0.00	
5504.00†	17.186	140.020	5292.73	1056.14	-1104.34	925.99	0.00	
5604.00†	17.186	140.020	5388.26	1077.79	-1126.98	944.97	0.00	



# Planned Wellpath Report

SEELEY FEDERAL 39N-30A-L (REV-A.0) PWP

Page 4 of 9



REFERENCE WELLPATH IDENTIFICATION			
Operator	SRC ENERGY	Slot	SLOT#19 SEELEY FEDERAL 39N-30A-L (2132'FNL & 1599'FEL, SEC.26)
Area	COLORADO	Well	SEELEY FEDERAL 39N-30A-L
Field	WELD COUNTY (NAD83,TRUE NORTH)	Wellbore	SEELEY FEDERAL 39N-30A-L PWB
Facility	SEC.26-T06N-R66W		

WELLPATH DATA (184 stations) † = interpolated/extrapolated station								Comments
MD [ft]	Inclination [°]	Azimuth [°]	TVD [ft]	Vert Sect [ft]	North [ft]	East [ft]	DLS [°/100ft]	
5704.00†	17.186	140.020	5483.80	1099.44	-1149.62	963.96	0.00	
5804.00†	17.186	140.020	5579.33	1121.10	-1172.26	982.94	0.00	
5904.00†	17.186	140.020	5674.87	1142.75	-1194.90	1001.93	0.00	
6004.00†	17.186	140.020	5770.40	1164.40	-1217.54	1020.91	0.00	
6104.00†	17.186	140.020	5865.94	1186.06	-1240.18	1039.90	0.00	
6204.00†	17.186	140.020	5961.47	1207.71	-1262.82	1058.88	0.00	
6304.00†	17.186	140.020	6057.01	1229.36	-1285.46	1077.87	0.00	
6404.00†	17.186	140.020	6152.54	1251.01	-1308.11	1096.85	0.00	
6504.00†	17.186	140.020	6248.08	1272.67	-1330.75	1115.83	0.00	
6604.00†	17.186	140.020	6343.61	1294.32	-1353.39	1134.82	0.00	
6620.80	17.186	140.020	6359.67	1297.96	-1357.19	1138.01	0.00	End of Tangent (XS)
6704.00†	22.631	124.749	6437.91	1321.18	-1375.76	1159.09	9.00	
6804.00†	30.304	114.080	6527.42	1362.45	-1397.06	1198.01	9.00	
6904.00†	38.514	107.511	6609.88	1417.33	-1416.77	1250.85	9.00	
7004.00†	46.978	102.982	6683.26	1484.46	-1434.38	1316.29	9.00	
7104.00†	55.576	99.565	6745.77	1562.19	-1449.48	1392.74	9.00	
7204.00†	64.252	96.791	6795.86	1648.61	-1461.68	1478.31	9.00	
7304.00†	72.973	94.399	6832.30	1741.59	-1470.69	1570.89	9.00	
7404.00†	81.719	92.222	6854.19	1838.84	-1476.29	1668.19	9.00	
7501.93	90.295	90.183	6861.00†	1935.91	-1478.33	1765.77	9.00	End of 3D Arc (XS)
7504.00†	90.295	90.183	6860.99	1937.96	-1478.34	1767.84	0.00	
7604.00†	90.295	90.183	6860.47	2037.23	-1478.66	1867.84	0.00	
7704.00†	90.295	90.183	6859.96	2136.49	-1478.97	1967.84	0.00	
7804.00†	90.295	90.183	6859.44	2235.75	-1479.29	2067.83	0.00	
7904.00†	90.295	90.183	6858.93	2335.01	-1479.61	2167.83	0.00	
8004.00†	90.295	90.183	6858.41	2434.27	-1479.93	2267.83	0.00	
8104.00†	90.295	90.183	6857.90	2533.53	-1480.25	2367.83	0.00	
8204.00†	90.295	90.183	6857.38	2632.80	-1480.57	2467.83	0.00	
8304.00†	90.295	90.183	6856.87	2732.06	-1480.89	2567.82	0.00	
8404.00†	90.295	90.183	6856.35	2831.32	-1481.21	2667.82	0.00	



# Planned Wellpath Report

## SEELEY FEDERAL 39N-30A-L (REV-A.0) PWP

Page 5 of 9



REFERENCE WELLPATH IDENTIFICATION			
Operator	SRC ENERGY	Slot	SLOT#19 SEELEY FEDERAL 39N-30A-L (2132'FNL & 1599'FEL, SEC.26)
Area	COLORADO	Well	SEELEY FEDERAL 39N-30A-L
Field	WELD COUNTY (NAD83,TRUE NORTH)	Wellbore	SEELEY FEDERAL 39N-30A-L PWB
Facility	SEC.26-T06N-R66W		

WELLPATH DATA (184 stations) † = interpolated/extrapolated station								
MD [ft]	Inclination [°]	Azimuth [°]	TVD [ft]	Vert Sect [ft]	North [ft]	East [ft]	DLS [°/100ft]	Comments
8504.00†	90.295	90.183	6855.84	2930.58	-1481.53	2767.82	0.00	
8604.00†	90.295	90.183	6855.32	3029.84	-1481.84	2867.82	0.00	
8704.00†	90.295	90.183	6854.81	3129.10	-1482.16	2967.82	0.00	
8804.00†	90.295	90.183	6854.29	3228.36	-1482.48	3067.82	0.00	
8904.00†	90.295	90.183	6853.78	3327.63	-1482.80	3167.81	0.00	
9004.00†	90.295	90.183	6853.26	3426.89	-1483.12	3267.81	0.00	
9104.00†	90.295	90.183	6852.75	3526.15	-1483.44	3367.81	0.00	
9204.00†	90.295	90.183	6852.23	3625.41	-1483.76	3467.81	0.00	
9304.00†	90.295	90.183	6851.72	3724.67	-1484.08	3567.81	0.00	
9404.00†	90.295	90.183	6851.20	3823.93	-1484.40	3667.80	0.00	
9504.00†	90.295	90.183	6850.69	3923.20	-1484.72	3767.80	0.00	
9604.00†	90.295	90.183	6850.17	4022.46	-1485.03	3867.80	0.00	
9704.00†	90.295	90.183	6849.66	4121.72	-1485.35	3967.80	0.00	
9804.00†	90.295	90.183	6849.14	4220.98	-1485.67	4067.80	0.00	
9904.00†	90.295	90.183	6848.63	4320.24	-1485.99	4167.80	0.00	
10004.00†	90.295	90.183	6848.11	4419.50	-1486.31	4267.79	0.00	
10104.00†	90.295	90.183	6847.60	4518.76	-1486.63	4367.79	0.00	
10204.00†	90.295	90.183	6847.08	4618.03	-1486.95	4467.79	0.00	
10304.00†	90.295	90.183	6846.57	4717.29	-1487.27	4567.79	0.00	
10404.00†	90.295	90.183	6846.05	4816.55	-1487.59	4667.79	0.00	
10504.00†	90.295	90.183	6845.54	4915.81	-1487.90	4767.78	0.00	
10604.00†	90.295	90.183	6845.02	5015.07	-1488.22	4867.78	0.00	
10704.00†	90.295	90.183	6844.51	5114.33	-1488.54	4967.78	0.00	
10804.00†	90.295	90.183	6843.99	5213.60	-1488.86	5067.78	0.00	
10904.00†	90.295	90.183	6843.48	5312.86	-1489.18	5167.78	0.00	
11004.00†	90.295	90.183	6842.96	5412.12	-1489.50	5267.78	0.00	
11104.00†	90.295	90.183	6842.45	5511.38	-1489.82	5367.77	0.00	
11204.00†	90.295	90.183	6841.93	5610.64	-1490.14	5467.77	0.00	
11304.00†	90.295	90.183	6841.42	5709.90	-1490.46	5567.77	0.00	
11404.00†	90.295	90.183	6840.90	5809.16	-1490.77	5667.77	0.00	



# Planned Wellpath Report

SEELEY FEDERAL 39N-30A-L (REV-A.0) PWP

Page 6 of 9



REFERENCE WELLPATH IDENTIFICATION			
Operator	SRC ENERGY	Slot	SLOT#19 SEELEY FEDERAL 39N-30A-L (2132'FNL & 1599'FEL, SEC.26)
Area	COLORADO	Well	SEELEY FEDERAL 39N-30A-L
Field	WELD COUNTY (NAD83,TRUE NORTH)	Wellbore	SEELEY FEDERAL 39N-30A-L PWB
Facility	SEC.26-T06N-R66W		

WELLPATH DATA (184 stations) † = interpolated/extrapolated station								
MD [ft]	Inclination [°]	Azimuth [°]	TVD [ft]	Vert Sect [ft]	North [ft]	East [ft]	DLS [°/100ft]	Comments
11504.00†	90.295	90.183	6840.39	5908.43	-1491.09	5767.77	0.00	
11604.00†	90.295	90.183	6839.87	6007.69	-1491.41	5867.76	0.00	
11704.00†	90.295	90.183	6839.36	6106.95	-1491.73	5967.76	0.00	
11804.00†	90.295	90.183	6838.84	6206.21	-1492.05	6067.76	0.00	
11904.00†	90.295	90.183	6838.33	6305.47	-1492.37	6167.76	0.00	
12004.00†	90.295	90.183	6837.81	6404.73	-1492.69	6267.76	0.00	
12104.00†	90.295	90.183	6837.30	6503.99	-1493.01	6367.76	0.00	
12204.00†	90.295	90.183	6836.78	6603.26	-1493.33	6467.75	0.00	
12304.00†	90.295	90.183	6836.27	6702.52	-1493.64	6567.75	0.00	
12404.00†	90.295	90.183	6835.75	6801.78	-1493.96	6667.75	0.00	
12504.00†	90.295	90.183	6835.24	6901.04	-1494.28	6767.75	0.00	
12604.00†	90.295	90.183	6834.72	7000.30	-1494.60	6867.75	0.00	
12704.00†	90.295	90.183	6834.21	7099.56	-1494.92	6967.74	0.00	
12804.00†	90.295	90.183	6833.69	7198.83	-1495.24	7067.74	0.00	
12904.00†	90.295	90.183	6833.18	7298.09	-1495.56	7167.74	0.00	
13004.00†	90.295	90.183	6832.66	7397.35	-1495.88	7267.74	0.00	
13104.00†	90.295	90.183	6832.15	7496.61	-1496.20	7367.74	0.00	
13204.00†	90.295	90.183	6831.63	7595.87	-1496.52	7467.73	0.00	
13304.00†	90.295	90.183	6831.12	7695.13	-1496.83	7567.73	0.00	
13404.00†	90.295	90.183	6830.60	7794.39	-1497.15	7667.73	0.00	
13504.00†	90.295	90.183	6830.09	7893.66	-1497.47	7767.73	0.00	
13604.00†	90.295	90.183	6829.57	7992.92	-1497.79	7867.73	0.00	
13704.00†	90.295	90.183	6829.06	8092.18	-1498.11	7967.73	0.00	
13804.00†	90.295	90.183	6828.54	8191.44	-1498.43	8067.72	0.00	
13904.00†	90.295	90.183	6828.03	8290.70	-1498.75	8167.72	0.00	
14004.00†	90.295	90.183	6827.51	8389.96	-1499.07	8267.72	0.00	
14104.00†	90.295	90.183	6827.00	8489.23	-1499.39	8367.72	0.00	
14204.00†	90.295	90.183	6826.48	8588.49	-1499.70	8467.72	0.00	
14304.00†	90.295	90.183	6825.97	8687.75	-1500.02	8567.71	0.00	
14404.00†	90.295	90.183	6825.45	8787.01	-1500.34	8667.71	0.00	





# Planned Wellpath Report

## SEELEY FEDERAL 39N-30A-L (REV-A.0) PWP

Page 7 of 9



REFERENCE WELLPATH IDENTIFICATION			
Operator	SRC ENERGY	Slot	SLOT#19 SEELEY FEDERAL 39N-30A-L (2132'FNL & 1599'FEL, SEC.26)
Area	COLORADO	Well	SEELEY FEDERAL 39N-30A-L
Field	WELD COUNTY (NAD83,TRUE NORTH)	Wellbore	SEELEY FEDERAL 39N-30A-L PWB
Facility	SEC.26-T06N-R66W		

WELLPATH DATA (184 stations) † = interpolated/extrapolated station								
MD [ft]	Inclination [°]	Azimuth [°]	TVD [ft]	Vert Sect [ft]	North [ft]	East [ft]	DLS [°/100ft]	Comments
14504.00†	90.295	90.183	6824.94	8886.27	-1500.66	8767.71	0.00	
14604.00†	90.295	90.183	6824.42	8985.53	-1500.98	8867.71	0.00	
14704.00†	90.295	90.183	6823.91	9084.79	-1501.30	8967.71	0.00	
14804.00†	90.295	90.183	6823.39	9184.06	-1501.62	9067.71	0.00	
14904.00†	90.295	90.183	6822.88	9283.32	-1501.94	9167.70	0.00	
15004.00†	90.295	90.183	6822.36	9382.58	-1502.26	9267.70	0.00	
15104.00†	90.295	90.183	6821.85	9481.84	-1502.57	9367.70	0.00	
15204.00†	90.295	90.183	6821.33	9581.10	-1502.89	9467.70	0.00	
15304.00†	90.295	90.183	6820.82	9680.36	-1503.21	9567.70	0.00	
15404.00†	90.295	90.183	6820.30	9779.63	-1503.53	9667.69	0.00	
15504.00†	90.295	90.183	6819.79	9878.89	-1503.85	9767.69	0.00	
15604.00†	90.295	90.183	6819.27	9978.15	-1504.17	9867.69	0.00	
15704.00†	90.295	90.183	6818.76	10077.41	-1504.49	9967.69	0.00	
15804.00†	90.295	90.183	6818.24	10176.67	-1504.81	10067.69	0.00	
15904.00†	90.295	90.183	6817.73	10275.93	-1505.13	10167.69	0.00	
16004.00†	90.295	90.183	6817.21	10375.19	-1505.44	10267.68	0.00	
16104.00†	90.295	90.183	6816.70	10474.46	-1505.76	10367.68	0.00	
16204.00†	90.295	90.183	6816.18	10573.72	-1506.08	10467.68	0.00	
16304.00†	90.295	90.183	6815.67	10672.98	-1506.40	10567.68	0.00	
16404.00†	90.295	90.183	6815.15	10772.24	-1506.72	10667.68	0.00	
16504.00†	90.295	90.183	6814.64	10871.50	-1507.04	10767.67	0.00	
16604.00†	90.295	90.183	6814.12	10970.76	-1507.36	10867.67	0.00	
16704.00†	90.295	90.183	6813.61	11070.03	-1507.68	10967.67	0.00	
16804.00†	90.295	90.183	6813.09	11169.29	-1508.00	11067.67	0.00	
16904.00†	90.295	90.183	6812.58	11268.55	-1508.31	11167.67	0.00	
17004.00†	90.295	90.183	6812.06	11367.81	-1508.63	11267.67	0.00	
17104.00†	90.295	90.183	6811.55	11467.07	-1508.95	11367.66	0.00	
17204.00†	90.295	90.183	6811.03	11566.33	-1509.27	11467.66	0.00	
17304.00†	90.295	90.183	6810.52	11665.59	-1509.59	11567.66	0.00	
17404.00†	90.295	90.183	6810.00	11764.86	-1509.91	11667.66	0.00	



# Planned Wellpath Report

SEELEY FEDERAL 39N-30A-L (REV-A.0) PWP

Page 8 of 9



REFERENCE WELLPATH IDENTIFICATION			
Operator	SRC ENERGY	Slot	SLOT#19 SEELEY FEDERAL 39N-30A-L (2132'FNL & 1599'FEL, SEC.26)
Area	COLORADO	Well	SEELEY FEDERAL 39N-30A-L
Field	WELD COUNTY (NAD83,TRUE NORTH)	Wellbore	SEELEY FEDERAL 39N-30A-L PWB
Facility	SEC.26-T06N-R66W		

WELLPATH DATA (184 stations) † = interpolated/extrapolated station								
MD [ft]	Inclination [°]	Azimuth [°]	TVD [ft]	Vert Sect [ft]	North [ft]	East [ft]	DLS [°/100ft]	Comments
17504.00†	90.295	90.183	6809.49	11864.12	-1510.23	11767.66	0.00	
17604.00†	90.295	90.183	6808.97	11963.38	-1510.55	11867.65	0.00	
17704.00†	90.295	90.183	6808.46	12062.64	-1510.87	11967.65	0.00	
17793.23	90.295	90.183	6808.00 <sup>2</sup>	12151.22	-1511.15	12056.89	0.00	End of Tangent (XS)

HOLE & CASING SECTIONS									
- Ref Wellbore: SEELEY FEDERAL 39N-30A-L PWB					Ref Wellpath: SEELEY FEDERAL 39N-30A-L (REV-A.0) PWP				
String/Diameter	Start MD [ft]	End MD [ft]	Interval [ft]	Start TVD [ft]	End TVD [ft]	Start N/S [ft]	Start E/W [ft]	End N/S [ft]	End E/W [ft]
13.5in Open Hole	4.00	1750.00	1746.00	4.00	1706.33	0.00	0.00	-254.40	213.31
9.625in Casing Surface	4.00	1750.00	1746.00	4.00	1706.33	0.00	0.00	-254.40	213.31
8.5in Open Hole	1750.00	17793.23	16043.23	1706.33	6808.00	-254.40	213.31	-1511.15	12056.88



# Planned Wellpath Report

## SEELEY FEDERAL 39N-30A-L (REV-A.0) PWP

Page 9 of 9



REFERENCE WELLPATH IDENTIFICATION			
Operator	SRC ENERGY	Slot	SLOT#19 SEELEY FEDERAL 39N-30A-L (2132'FNL & 1599'FEL, SEC.26)
Area	COLORADO	Well	SEELEY FEDERAL 39N-30A-L
Field	WELD COUNTY (NAD83,TRUE NORTH)	Wellbore	SEELEY FEDERAL 39N-30A-L PWB
Facility	SEC.26-T06N-R66W		

TARGETS									
Name	MD [ft]	TVD [ft]	North [ft]	East [ft]	Grid East [US ft]	Grid North [US ft]	Latitude	Longitude	Shape
EAST HALF OF SEC.02-T05N-R66W		-23.00	420.08	3.63	3211308.44	1412009.18	40°27'42.779"N	104°44'26.117"W	polygon
EAST HALF OF SEC.26-T06N-R66W		-23.00	420.08	3.63	3211308.44	1412009.18	40°27'42.779"N	104°44'26.117"W	polygon
EAST HALF OF SEC.35-T06N-R66W		-23.00	420.08	3.63	3211308.44	1412009.18	40°27'42.779"N	104°44'26.117"W	polygon
SEC.25-T06N-R66W		-23.00	420.08	3.63	3211308.44	1412009.18	40°27'42.779"N	104°44'26.117"W	polygon
SEC.30-T06N-R65W		-23.00	420.08	3.63	3211308.44	1412009.18	40°27'42.779"N	104°44'26.117"W	polygon
SOUTH HALF OF SEC.19-T06N-R65W		-23.00	420.08	3.63	3211308.44	1412009.18	40°27'42.779"N	104°44'26.117"W	polygon
SOUTH HALF OF SEC.24-T06N-R66W		-23.00	420.08	3.63	3211308.44	1412009.18	40°27'42.779"N	104°44'26.117"W	polygon
2) SEELEY FEDERAL 39N-30A-L BHL ON PLAT (1683'FSL & 150'FEL, SEC.30)	17793.23	6808.00	-1511.15	12056.89	3223377.33	1410181.32	40°27'23.666"N	104°41'50.194"W	circle
1) SEELEY FEDERAL 39N-30A-L TOP OF PROD ON PLAT (1650'FSL & 150'FWL, SEC.25)	7501.93	6861.00	-1478.33	1765.77	3213086.70	1410126.01	40°27'24.019"N	104°44'03.322"W	circle

SURVEY PROGRAM -				
Ref Wellbore: SEELEY FEDERAL 39N-30A-L PWB		Ref Wellpath: SEELEY FEDERAL 39N-30A-L (REV-A.0) PWP		
Start MD [ft]	End MD [ft]	Positional Uncertainty Model	Log Name/Comment	Wellbore
4.00	1750.00	BHI NaviTrak (Rotating+Axial Corr)		SEELEY FEDERAL 39N-30A-L PWB
1750.00	17793.23	BHI AutoTrak Curve (IFR1, Short)		SEELEY FEDERAL 39N-30A-L PWB