

SRC ENERGY

Location: COLORADO Slot: SLOT#12 SEELEY FEDERAL 8N-30C-L (1933'FNL & 1594'FEL, SEC.26)
Field: WELD COUNTY (NAD83, TRUE NORTH) Well: SEELEY FEDERAL 8N-30C-L
Facility: SEC 26-T06N-R66W Wellbore: SEELEY FEDERAL 8N-30C-L PWB

Plot reference wellpath is SEELEY FEDERAL 8N-30C-L (REV-A.0) PWP	Grid System: NAD83 / Lambert Colorado SP, Northern Zone (501), US feet
True vertical depths are referenced to PROPETRO 12 (4') (RKB)	* = Wellpath was transformed from a different geodetic datum
Measured depths are referenced to PROPETRO 12 (4') (RKB)	North Reference: True north
PROPETRO 12 (4') (RKB) to Mean Sea Level: 4701 feet	Scale: True distance
Mean Sea Level to Mud line (At Slot: SLOT#12 SEELEY FEDERAL 8N-30C-L (1933'FNL & 1594'FEL, SEC.26)): 0 feet	Depths are in feet
Coordinates are in feet referenced to Slot	Created by: dovdianna on 2018-05-10
	Database: WellArchitectDB

Location Information

Facility Name			Grid East (US ft)	Grid North (US ft)	Latitude	Longitude
SEC 26-T06N-R66W			3211308.457	1412009.161	40°27'42.779"N	104°44'26.117"W
Slot	Local N (ft)	Local E (ft)	Grid East (US ft)	Grid North (US ft)	Latitude	Longitude
SLOT#12 SEELEY FEDERAL 8N-30C-L (1933'FNL & 1594'FEL, SEC.26)	-229.69	-1.95	3211308.394	1411789.073	40°27'42.694"N	104°44'26.142"W
PROPETRO 12 (4') (RKB) to Mud line (At Slot: SLOT#12 SEELEY FEDERAL 8N-30C-L (1933'FNL & 1594'FEL, SEC.26))						4701ft
Mean Sea Level to Mud line (At Slot: SLOT#12 SEELEY FEDERAL 8N-30C-L (1933'FNL & 1594'FEL, SEC.26))						0ft
PROPETRO 12 (4') (RKB) to Mean Sea Level						4701ft

Survey Program

Start MD (ft)	End MD (ft)	Tool	Model	Log Name/Comment	Wellbore
4.00	1750.00	BHI NavTrak	BHI NavTrak (Rotating+Axial Corr)		SEELEY FEDERAL 8N-30C-L PWB
1750.00	17808.49	BHI AutoTrak Curve	BHI AutoTrak Curve (IFR1, Short)		SEELEY FEDERAL 8N-30C-L PWB

Well Profile Data

Design Comment	MD (ft)	Inc (°)	Az (°)	TVD (ft)	Local N (ft)	Local E (ft)	DLS (°/100ft)	VS (ft)
Tie On	4.00	0.000	97.050	4.00	0.00	0.00	0.00	0.00
End of Tangent	200.00	0.000	97.050	200.00	0.00	0.00	0.00	0.00
End of Build (XS)	727.32	10.546	97.050	724.35	-5.94	48.03	2.00	48.13
End of Tangent (XS)	6623.82	10.546	97.050	6521.24	-138.41	1119.12	0.00	1121.51
End of 3D Arc (XS)	7509.11	90.150	90.395	7042.00	-154.00	1746.71	9.00	1749.28
End of Tangent (XS)	17808.49	90.150	90.395	7015.00	-225.01	12045.81	0.00	12047.91

Targets

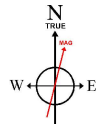
Name	MD (ft)	Inc (°)	Az (°)	TVD (ft)	Local N (ft)	Local E (ft)	DLS (°/100ft)	VS (ft)
SEELEY FEDERAL 8N-30C-L (REV-A.0) PWP	17808.49	90.150	90.395	7015.00	-225.01	12045.81	0.00	12047.91
SEELEY FEDERAL 8N-30C-L (REV-A.0) PWP	17808.49	90.150	90.395	7015.00	-225.01	12045.81	0.00	12047.91
SEELEY FEDERAL 8N-30C-L (REV-A.0) PWP	17808.49	90.150	90.395	7015.00	-225.01	12045.81	0.00	12047.91
SEELEY FEDERAL 8N-30C-L (REV-A.0) PWP	17808.49	90.150	90.395	7015.00	-225.01	12045.81	0.00	12047.91
SEELEY FEDERAL 8N-30C-L (REV-A.0) PWP	17808.49	90.150	90.395	7015.00	-225.01	12045.81	0.00	12047.91
SEELEY FEDERAL 8N-30C-L (REV-A.0) PWP	17808.49	90.150	90.395	7015.00	-225.01	12045.81	0.00	12047.91
SEELEY FEDERAL 8N-30C-L (REV-A.0) PWP	17808.49	90.150	90.395	7015.00	-225.01	12045.81	0.00	12047.91
SEELEY FEDERAL 8N-30C-L (REV-A.0) PWP	17808.49	90.150	90.395	7015.00	-225.01	12045.81	0.00	12047.91
SEELEY FEDERAL 8N-30C-L (REV-A.0) PWP	17808.49	90.150	90.395	7015.00	-225.01	12045.81	0.00	12047.91

Hole and Casing Sections

Name	Start MD (ft)	End MD (ft)	Interval (ft)	Start TVD (ft)	End TVD (ft)	Start Local N (ft)	End Local E (ft)	Wellbore
15.5in Open Hole	4.00	1750.00	1746.00	14.00	1729.75	0.00	-28.92	SEELEY FEDERAL 8N-30C-L PWB
9.5in Casing Surface	4.00	1750.00	1746.00	14.00	1729.75	0.00	-28.92	SEELEY FEDERAL 8N-30C-L PWB
8.5in Open Hole	1750.00	17808.49	16058.49	1729.75	7015.00	-28.92	12045.81	SEELEY FEDERAL 8N-30C-L PWB

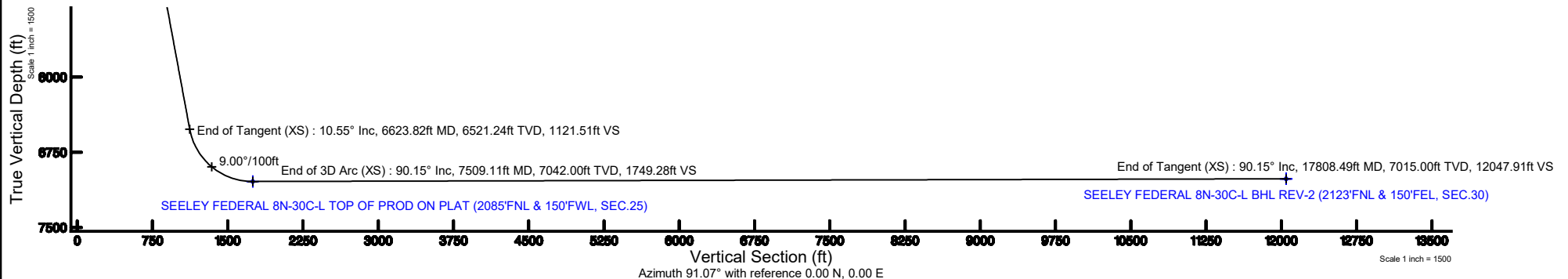
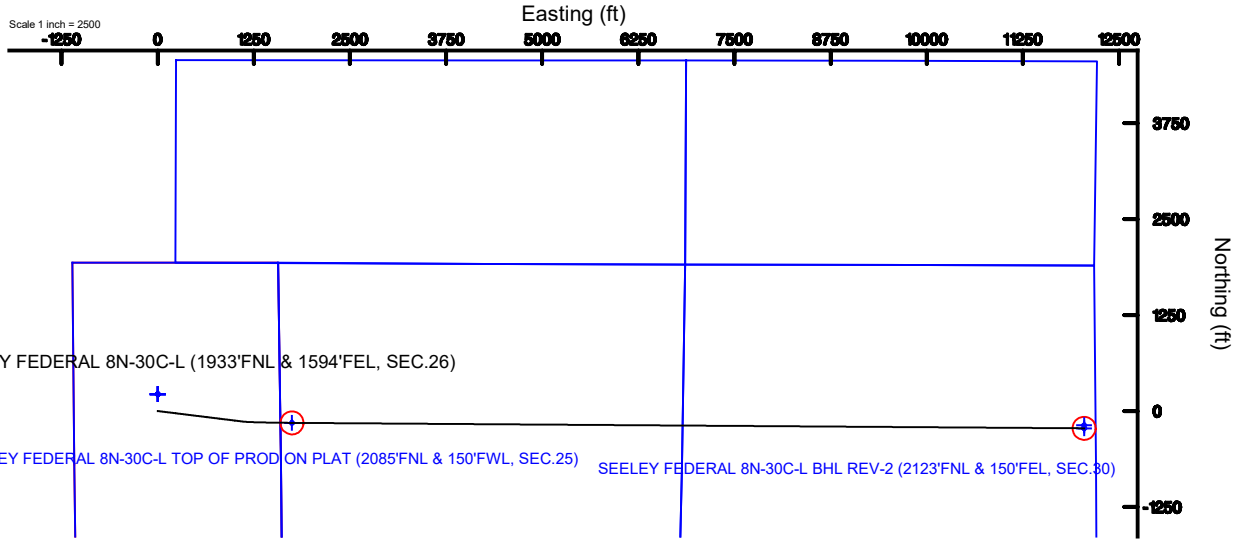


SRC ENERGY



BGGM (1900.0 to 2019.0) Dip: 66.87° Field: 52352.6 nT
Magnetic North is 8.30 degrees East of True North (at 4/24/2018)

To correct azimuth from Magnetic to True add 8.30 degrees



SEELEY_FEDERAL_8N-30C-L__REV-A.0__PWP.las

~VERSION INFORMATION

VERS. 2.0 : CWLS LOG ASCII STANDARD-VERSION 2.0

WRAP. NO : ASCII DATA SECTION CONTAINS ONE ROW PER WELLPATH STATION

~WELL INFORMATION

#MNEM	.UNITS	DATA	:DESCRIPTION
#----	.-----	----	:-----
STRT	.ft	0.00	:START MD
STOP	.ft	17808.49	:STOP MD
STEP	.ft	0.0	:STEP (non-uniform increment)
NULL	.	-999.99	:NULL
COMP	.	SRC ENERGY	:OPERATOR
WELL	.	SEELEY FEDERAL 8N-30C-L	:WELL
FLD	.	WELD COUNTY (NAD83,TRUE NORTH)	:FIELD
LOC	.	COLORADO	:AREA (aka: Location)
CNTY	.	N/A	:COUNTY
STAT	.	N/A	:STATE
CTRY	.	N/A	:COUNTRY
SRVC	.	Baker Hughes	:CONTRACTOR
DATE	.	04/25/2018	:LOG REV DATE
API	.		:API NUMBER

~OTHER INFORMATION

#Software: WellArchitect(R) Version 5.0

#MNEM	.UNITS	DATA	:DESCRIPTION
#----	.-----	----	:-----
WPTYPE	.	PLANNED WELLPATH	:WELLPATH TYPE
FACILITY	.	SEC.26-T06N-R66W	:FACILITY
SLOT	.	SLOT#12 SEELEY FEDERAL 8N-30C-L (1933'FNL & 1594'FEL, SEC.26):SLOT	
WELLBORE	.	SEELEY FEDERAL 8N-30C-L PWB	:WELLBORE
WELLPATH	.	SEELEY FEDERAL 8N-30C-L (REV-A.0) PWP	:WELLPATH
MDREFPT	.	PROPETRO 12 (4') (RKB)	:MD REFERENCE POINT
TVDREFPT	.	PROPETRO 12 (4') (RKB)	:TVD REFERENCE POINT
LCLREFPT	.	Slot	:LOCAL COORDINATE
REFERENCE PT			
VSAZIMUTH.deg		91.07	:VERTICAL SECTION
AZIMUTH			
VSORIGN	.ft	0.00	:VERTICAL SECTION ORIGIN
NORTH			
VSORIGE	.ft	0.00	:VERTICAL SECTION ORIGIN
EAST			

~CURVE (WELLPATH) INFORMATION

#MNEM	.UNITS	:DESCRIPTION
#----	.-----	:-----
DEPT	.ft	:MEASURED DEPTH

SEELEY_FEDERAL_8N-30C-L__REV-A.0__PWP.las

INC .deg :INCLINATION
 AZI .deg :AZIMUTH
 TVD .ft :TRUE VERTICAL DEPTH
 SECT .ft :CROSS SECTION (CURTAIN/VERTICAL)
 LOCALN .ft :LOCAL NORTH
 LOCALE .ft :LOCAL EAST
 LAT .deg :LATITUDE
 LONG .deg :LONGITUDE
 DLS .deg/100ft :DOGLEG SEVERITY

~ASCII DATA

0.00	0.00	97.05	0.00	0.00	0.00	0.00	40.4612789
-104.7405950	0.00						
4.00	0.00	97.05	4.00	0.00	0.00	0.00	40.4612789
-104.7405950	0.00						
104.00	0.00	97.05	104.00	0.00	0.00	0.00	40.4612789
-104.7405950	0.00						
200.00	0.00	97.05	200.00	0.00	0.00	0.00	40.4612789
-104.7405950	0.00						
204.00	0.08	97.05	204.00	0.00	0.00	0.00	40.4612789
-104.7405950	2.00						
304.00	2.08	97.05	303.98	1.88	-0.23	1.87	40.4612783
-104.7405883	2.00						
404.00	4.08	97.05	403.83	7.22	-0.89	7.21	40.4612764
-104.7405691	2.00						
504.00	6.08	97.05	503.43	16.03	-1.98	15.99	40.4612735
-104.7405375	2.00						
604.00	8.08	97.05	602.66	28.28	-3.49	28.22	40.4612693
-104.7404936	2.00						
704.00	10.08	97.05	701.40	43.98	-5.43	43.89	40.4612640
-104.7404373	2.00						
727.32	10.55	97.05	724.35	48.13	-5.94	48.03	40.4612626
-104.7404224	2.00						
804.00	10.55	97.05	799.73	62.09	-7.66	61.96	40.4612579
-104.7403723	0.00						
904.00	10.55	97.05	898.04	80.29	-9.91	80.12	40.4612517
-104.7403071	0.00						
1004.00	10.55	97.05	996.35	98.50	-12.16	98.29	40.4612455
-104.7402418	0.00						
1104.00	10.55	97.05	1094.66	116.70	-14.40	116.45	40.4612394
-104.7401765	0.00						
1204.00	10.55	97.05	1192.97	134.90	-16.65	134.62	40.4612332
-104.7401112	0.00						
1304.00	10.55	97.05	1291.29	153.11	-18.90	152.78	40.4612270
-104.7400460	0.00						
1404.00	10.55	97.05	1389.60	171.31	-21.14	170.95	40.4612209
-104.7399807	0.00						
1504.00	10.55	97.05	1487.91	189.52	-23.39	189.11	40.4612147

SEELEY_FEDERAL_8N-30C-L__REV-A.0__PWP.las

-104.7399154	0.00						
1604.00	10.55	97.05	1586.22	207.72	-25.64	207.28	40.4612085
-104.7398501	0.00						
1704.00	10.55	97.05	1684.53	225.92	-27.88	225.44	40.4612024
-104.7397848	0.00						
1804.00	10.55	97.05	1782.84	244.13	-30.13	243.61	40.4611962
-104.7397196	0.00						
1904.00	10.55	97.05	1881.15	262.33	-32.38	261.77	40.4611900
-104.7396543	0.00						
2004.00	10.55	97.05	1979.46	280.53	-34.62	279.94	40.4611839
-104.7395890	0.00						
2104.00	10.55	97.05	2077.77	298.74	-36.87	298.10	40.4611777
-104.7395237	0.00						
2204.00	10.55	97.05	2176.08	316.94	-39.11	316.27	40.4611715
-104.7394585	0.00						
2304.00	10.55	97.05	2274.39	335.14	-41.36	334.43	40.4611654
-104.7393932	0.00						
2404.00	10.55	97.05	2372.70	353.35	-43.61	352.60	40.4611592
-104.7393279	0.00						
2504.00	10.55	97.05	2471.01	371.55	-45.85	370.76	40.4611530
-104.7392626	0.00						
2604.00	10.55	97.05	2569.32	389.76	-48.10	388.93	40.4611468
-104.7391973	0.00						
2704.00	10.55	97.05	2667.63	407.96	-50.35	407.09	40.4611407
-104.7391321	0.00						
2804.00	10.55	97.05	2765.95	426.16	-52.59	425.25	40.4611345
-104.7390668	0.00						
2904.00	10.55	97.05	2864.26	444.37	-54.84	443.42	40.4611283
-104.7390015	0.00						
3004.00	10.55	97.05	2962.57	462.57	-57.09	461.58	40.4611222
-104.7389362	0.00						
3104.00	10.55	97.05	3060.88	480.77	-59.33	479.75	40.4611160
-104.7388710	0.00						
3204.00	10.55	97.05	3159.19	498.98	-61.58	497.91	40.4611098
-104.7388057	0.00						
3304.00	10.55	97.05	3257.50	517.18	-63.83	516.08	40.4611037
-104.7387404	0.00						
3404.00	10.55	97.05	3355.81	535.38	-66.07	534.24	40.4610975
-104.7386751	0.00						
3504.00	10.55	97.05	3454.12	553.59	-68.32	552.41	40.4610913
-104.7386098	0.00						
3604.00	10.55	97.05	3552.43	571.79	-70.57	570.57	40.4610852
-104.7385446	0.00						
3704.00	10.55	97.05	3650.74	590.00	-72.81	588.74	40.4610790
-104.7384793	0.00						
3804.00	10.55	97.05	3749.05	608.20	-75.06	606.90	40.4610728
-104.7384140	0.00						
3904.00	10.55	97.05	3847.36	626.40	-77.31	625.07	40.4610667

SEELEY_FEDERAL_8N-30C-L__REV-A.0__PWP.las

-104.7383487	0.00						
4004.00	10.55	97.05	3945.67	644.61	-79.55	643.23	40.4610605
-104.7382835	0.00						
4104.00	10.55	97.05	4043.98	662.81	-81.80	661.40	40.4610543
-104.7382182	0.00						
4204.00	10.55	97.05	4142.30	681.01	-84.05	679.56	40.4610482
-104.7381529	0.00						
4304.00	10.55	97.05	4240.61	699.22	-86.29	697.73	40.4610420
-104.7380876	0.00						
4404.00	10.55	97.05	4338.92	717.42	-88.54	715.89	40.4610358
-104.7380223	0.00						
4504.00	10.55	97.05	4437.23	735.62	-90.79	734.06	40.4610297
-104.7379571	0.00						
4604.00	10.55	97.05	4535.54	753.83	-93.03	752.22	40.4610235
-104.7378918	0.00						
4704.00	10.55	97.05	4633.85	772.03	-95.28	770.39	40.4610173
-104.7378265	0.00						
4804.00	10.55	97.05	4732.16	790.24	-97.53	788.55	40.4610112
-104.7377612	0.00						
4904.00	10.55	97.05	4830.47	808.44	-99.77	806.72	40.4610050
-104.7376960	0.00						
5004.00	10.55	97.05	4928.78	826.64	-102.02	824.88	40.4609988
-104.7376307	0.00						
5104.00	10.55	97.05	5027.09	844.85	-104.27	843.05	40.4609927
-104.7375654	0.00						
5204.00	10.55	97.05	5125.40	863.05	-106.51	861.21	40.4609865
-104.7375001	0.00						
5304.00	10.55	97.05	5223.71	881.25	-108.76	879.38	40.4609803
-104.7374349	0.00						
5404.00	10.55	97.05	5322.02	899.46	-111.01	897.54	40.4609741
-104.7373696	0.00						
5504.00	10.55	97.05	5420.33	917.66	-113.25	915.71	40.4609680
-104.7373043	0.00						
5604.00	10.55	97.05	5518.64	935.86	-115.50	933.87	40.4609618
-104.7372390	0.00						
5704.00	10.55	97.05	5616.96	954.07	-117.75	952.04	40.4609556
-104.7371737	0.00						
5804.00	10.55	97.05	5715.27	972.27	-119.99	970.20	40.4609495
-104.7371085	0.00						
5904.00	10.55	97.05	5813.58	990.48	-122.24	988.37	40.4609433
-104.7370432	0.00						
6004.00	10.55	97.05	5911.89	1008.68	-124.48	1006.53	40.4609371
-104.7369779	0.00						
6104.00	10.55	97.05	6010.20	1026.88	-126.73	1024.70	40.4609310
-104.7369126	0.00						
6204.00	10.55	97.05	6108.51	1045.09	-128.98	1042.86	40.4609248
-104.7368474	0.00						
6304.00	10.55	97.05	6206.82	1063.29	-131.22	1061.02	40.4609186

SEELEY_FEDERAL_8N-30C-L__REV-A.0__PWP.las

-104.7367821	0.00						
6404.00	10.55	97.05	6305.13	1081.49	-133.47	1079.19	40.4609125
-104.7367168	0.00						
6504.00	10.55	97.05	6403.44	1099.70	-135.72	1097.35	40.4609063
-104.7366515	0.00						
6604.00	10.55	97.05	6501.75	1117.90	-137.96	1115.52	40.4609001
-104.7365862	0.00						
6623.82	10.55	97.05	6521.24	1121.51	-138.41	1119.12	40.4608989
-104.7365733	0.00						
6704.00	17.73	94.27	6598.94	1141.02	-140.22	1138.60	40.4608939
-104.7365033	9.00						
6804.00	26.72	92.85	6691.41	1178.77	-142.48	1176.32	40.4608877
-104.7363678	9.00						
6904.00	35.71	92.12	6776.85	1230.53	-144.68	1228.04	40.4608817
-104.7361819	9.00						
7004.00	44.70	91.65	6853.15	1295.01	-146.77	1292.49	40.4608759
-104.7359503	9.00						
7104.00	53.70	91.31	6918.42	1370.63	-148.71	1368.09	40.4608706
-104.7356786	9.00						
7204.00	62.70	91.04	6971.06	1455.53	-150.43	1452.98	40.4608659
-104.7353736	9.00						
7304.00	71.69	90.81	7009.78	1547.62	-151.91	1545.05	40.4608618
-104.7350427	9.00						
7404.00	80.69	90.60	7033.62	1644.63	-153.10	1642.06	40.4608585
-104.7346941	9.00						
7504.00	89.69	90.41	7041.99	1744.17	-153.97	1741.60	40.4608561
-104.7343364	9.00						
7509.11	90.15	90.40	7042.00	1749.28	-154.00	1746.71	40.4608560
-104.7343180	9.00						
7604.00	90.15	90.40	7041.75	1844.16	-154.66	1841.60	40.4608542
-104.7339770	0.00						
7704.00	90.15	90.40	7041.49	1944.16	-155.35	1941.59	40.4608523
-104.7336177	0.00						
7804.00	90.15	90.40	7041.23	2044.15	-156.04	2041.59	40.4608504
-104.7332583	0.00						
7904.00	90.15	90.40	7040.96	2144.14	-156.73	2141.59	40.4608484
-104.7328990	0.00						
8004.00	90.15	90.40	7040.70	2244.13	-157.42	2241.59	40.4608465
-104.7325396	0.00						
8104.00	90.15	90.40	7040.44	2344.13	-158.10	2341.58	40.4608446
-104.7321802	0.00						
8204.00	90.15	90.40	7040.18	2444.12	-158.79	2441.58	40.4608427
-104.7318209	0.00						
8304.00	90.15	90.40	7039.92	2544.11	-159.48	2541.58	40.4608408
-104.7314615	0.00						
8404.00	90.15	90.40	7039.65	2644.10	-160.17	2641.57	40.4608388
-104.7311022	0.00						
8504.00	90.15	90.40	7039.39	2744.10	-160.86	2741.57	40.4608369

SEELEY_FEDERAL_8N-30C-L__REV-A.0__PWP.las

-104.7307428	0.00						
8604.00	90.15	90.40	7039.13	2844.09	-161.55	2841.57	40.4608350
-104.7303835	0.00						
8704.00	90.15	90.40	7038.87	2944.08	-162.24	2941.57	40.4608331
-104.7300241	0.00						
8804.00	90.15	90.40	7038.61	3044.08	-162.93	3041.56	40.4608312
-104.7296648	0.00						
8904.00	90.15	90.40	7038.34	3144.07	-163.62	3141.56	40.4608292
-104.7293054	0.00						
9004.00	90.15	90.40	7038.08	3244.06	-164.31	3241.56	40.4608273
-104.7289461	0.00						
9104.00	90.15	90.40	7037.82	3344.05	-165.00	3341.56	40.4608254
-104.7285867	0.00						
9204.00	90.15	90.40	7037.56	3444.05	-165.69	3441.55	40.4608234
-104.7282274	0.00						
9304.00	90.15	90.40	7037.29	3544.04	-166.38	3541.55	40.4608215
-104.7278680	0.00						
9404.00	90.15	90.40	7037.03	3644.03	-167.07	3641.55	40.4608196
-104.7275087	0.00						
9504.00	90.15	90.40	7036.77	3744.02	-167.76	3741.54	40.4608176
-104.7271493	0.00						
9604.00	90.15	90.40	7036.51	3844.02	-168.45	3841.54	40.4608157
-104.7267900	0.00						
9704.00	90.15	90.40	7036.25	3944.01	-169.13	3941.54	40.4608138
-104.7264306	0.00						
9804.00	90.15	90.40	7035.98	4044.00	-169.82	4041.54	40.4608118
-104.7260713	0.00						
9904.00	90.15	90.40	7035.72	4144.00	-170.51	4141.53	40.4608099
-104.7257119	0.00						
10004.00	90.15	90.40	7035.46	4243.99	-171.20	4241.53	40.4608080
-104.7253526	0.00						
10104.00	90.15	90.40	7035.20	4343.98	-171.89	4341.53	40.4608060
-104.7249932	0.00						
10204.00	90.15	90.40	7034.94	4443.97	-172.58	4441.53	40.4608041
-104.7246339	0.00						
10304.00	90.15	90.40	7034.67	4543.97	-173.27	4541.52	40.4608021
-104.7242745	0.00						
10404.00	90.15	90.40	7034.41	4643.96	-173.96	4641.52	40.4608002
-104.7239152	0.00						
10504.00	90.15	90.40	7034.15	4743.95	-174.65	4741.52	40.4607982
-104.7235558	0.00						
10604.00	90.15	90.40	7033.89	4843.94	-175.34	4841.51	40.4607963
-104.7231965	0.00						
10704.00	90.15	90.40	7033.62	4943.94	-176.03	4941.51	40.4607944
-104.7228371	0.00						
10804.00	90.15	90.40	7033.36	5043.93	-176.72	5041.51	40.4607924
-104.7224778	0.00						
10904.00	90.15	90.40	7033.10	5143.92	-177.41	5141.51	40.4607905

SEELEY_FEDERAL_8N-30C-L__REV-A.0__PWP.las

-104.7221184	0.00						
11004.00	90.15	90.40	7032.84	5243.92	-178.10	5241.50	40.4607885
-104.7217591	0.00						
11104.00	90.15	90.40	7032.58	5343.91	-178.79	5341.50	40.4607866
-104.7213997	0.00						
11204.00	90.15	90.40	7032.31	5443.90	-179.48	5441.50	40.4607846
-104.7210404	0.00						
11304.00	90.15	90.40	7032.05	5543.89	-180.16	5541.50	40.4607827
-104.7206810	0.00						
11404.00	90.15	90.40	7031.79	5643.89	-180.85	5641.49	40.4607807
-104.7203216	0.00						
11504.00	90.15	90.40	7031.53	5743.88	-181.54	5741.49	40.4607787
-104.7199623	0.00						
11604.00	90.15	90.40	7031.27	5843.87	-182.23	5841.49	40.4607768
-104.7196029	0.00						
11704.00	90.15	90.40	7031.00	5943.86	-182.92	5941.48	40.4607748
-104.7192436	0.00						
11804.00	90.15	90.40	7030.74	6043.86	-183.61	6041.48	40.4607729
-104.7188842	0.00						
11904.00	90.15	90.40	7030.48	6143.85	-184.30	6141.48	40.4607709
-104.7185249	0.00						
12004.00	90.15	90.40	7030.22	6243.84	-184.99	6241.48	40.4607689
-104.7181655	0.00						
12104.00	90.15	90.40	7029.95	6343.84	-185.68	6341.47	40.4607670
-104.7178062	0.00						
12204.00	90.15	90.40	7029.69	6443.83	-186.37	6441.47	40.4607650
-104.7174468	0.00						
12304.00	90.15	90.40	7029.43	6543.82	-187.06	6541.47	40.4607631
-104.7170875	0.00						
12404.00	90.15	90.40	7029.17	6643.81	-187.75	6641.47	40.4607611
-104.7167281	0.00						
12504.00	90.15	90.40	7028.91	6743.81	-188.44	6741.46	40.4607591
-104.7163688	0.00						
12604.00	90.15	90.40	7028.64	6843.80	-189.13	6841.46	40.4607572
-104.7160094	0.00						
12704.00	90.15	90.40	7028.38	6943.79	-189.82	6941.46	40.4607552
-104.7156501	0.00						
12804.00	90.15	90.40	7028.12	7043.78	-190.51	7041.45	40.4607532
-104.7152907	0.00						
12904.00	90.15	90.40	7027.86	7143.78	-191.20	7141.45	40.4607512
-104.7149314	0.00						
13004.00	90.15	90.40	7027.60	7243.77	-191.88	7241.45	40.4607493
-104.7145720	0.00						
13104.00	90.15	90.40	7027.33	7343.76	-192.57	7341.45	40.4607473
-104.7142127	0.00						
13204.00	90.15	90.40	7027.07	7443.76	-193.26	7441.44	40.4607453
-104.7138533	0.00						
13304.00	90.15	90.40	7026.81	7543.75	-193.95	7541.44	40.4607434

SEELEY_FEDERAL_8N-30C-L__REV-A.0__PWP.las

-104.7134940	0.00						
13404.00	90.15	90.40	7026.55	7643.74	-194.64	7641.44	40.4607414
-104.7131346	0.00						
13504.00	90.15	90.40	7026.28	7743.73	-195.33	7741.44	40.4607394
-104.7127753	0.00						
13604.00	90.15	90.40	7026.02	7843.73	-196.02	7841.43	40.4607374
-104.7124159	0.00						
13704.00	90.15	90.40	7025.76	7943.72	-196.71	7941.43	40.4607354
-104.7120566	0.00						
13804.00	90.15	90.40	7025.50	8043.71	-197.40	8041.43	40.4607335
-104.7116972	0.00						
13904.00	90.15	90.40	7025.24	8143.70	-198.09	8141.42	40.4607315
-104.7113379	0.00						
14004.00	90.15	90.40	7024.97	8243.70	-198.78	8241.42	40.4607295
-104.7109785	0.00						
14104.00	90.15	90.40	7024.71	8343.69	-199.47	8341.42	40.4607275
-104.7106192	0.00						
14204.00	90.15	90.40	7024.45	8443.68	-200.16	8441.42	40.4607255
-104.7102598	0.00						
14304.00	90.15	90.40	7024.19	8543.67	-200.85	8541.41	40.4607235
-104.7099005	0.00						
14404.00	90.15	90.40	7023.92	8643.67	-201.54	8641.41	40.4607215
-104.7095411	0.00						
14504.00	90.15	90.40	7023.66	8743.66	-202.23	8741.41	40.4607196
-104.7091818	0.00						
14604.00	90.15	90.40	7023.40	8843.65	-202.91	8841.41	40.4607176
-104.7088224	0.00						
14704.00	90.15	90.40	7023.14	8943.65	-203.60	8941.40	40.4607156
-104.7084631	0.00						
14804.00	90.15	90.40	7022.88	9043.64	-204.29	9041.40	40.4607136
-104.7081037	0.00						
14904.00	90.15	90.40	7022.61	9143.63	-204.98	9141.40	40.4607116
-104.7077444	0.00						
15004.00	90.15	90.40	7022.35	9243.62	-205.67	9241.39	40.4607096
-104.7073850	0.00						
15104.00	90.15	90.40	7022.09	9343.62	-206.36	9341.39	40.4607076
-104.7070257	0.00						
15204.00	90.15	90.40	7021.83	9443.61	-207.05	9441.39	40.4607056
-104.7066663	0.00						
15304.00	90.15	90.40	7021.57	9543.60	-207.74	9541.39	40.4607036
-104.7063070	0.00						
15404.00	90.15	90.40	7021.30	9643.59	-208.43	9641.38	40.4607016
-104.7059476	0.00						
15504.00	90.15	90.40	7021.04	9743.59	-209.12	9741.38	40.4606996
-104.7055883	0.00						
15604.00	90.15	90.40	7020.78	9843.58	-209.81	9841.38	40.4606976
-104.7052289	0.00						
15704.00	90.15	90.40	7020.52	9943.57	-210.50	9941.38	40.4606956

SEELEY_FEDERAL_8N-30C-L__REV-A.0__PWP.las

-104.7048696	0.00						
15804.00	90.15	90.40	7020.25	10043.57	-211.19	10041.37	40.4606936
-104.7045102	0.00						
15904.00	90.15	90.40	7019.99	10143.56	-211.88	10141.37	40.4606916
-104.7041509	0.00						
16004.00	90.15	90.40	7019.73	10243.55	-212.57	10241.37	40.4606896
-104.7037915	0.00						
16104.00	90.15	90.40	7019.47	10343.54	-213.26	10341.36	40.4606876
-104.7034322	0.00						
16204.00	90.15	90.40	7019.21	10443.54	-213.94	10441.36	40.4606856
-104.7030728	0.00						
16304.00	90.15	90.40	7018.94	10543.53	-214.63	10541.36	40.4606836
-104.7027135	0.00						
16404.00	90.15	90.40	7018.68	10643.52	-215.32	10641.36	40.4606816
-104.7023541	0.00						
16504.00	90.15	90.40	7018.42	10743.51	-216.01	10741.35	40.4606795
-104.7019948	0.00						
16604.00	90.15	90.40	7018.16	10843.51	-216.70	10841.35	40.4606775
-104.7016354	0.00						
16704.00	90.15	90.40	7017.90	10943.50	-217.39	10941.35	40.4606755
-104.7012761	0.00						
16804.00	90.15	90.40	7017.63	11043.49	-218.08	11041.35	40.4606735
-104.7009167	0.00						
16904.00	90.15	90.40	7017.37	11143.49	-218.77	11141.34	40.4606715
-104.7005574	0.00						
17004.00	90.15	90.40	7017.11	11243.48	-219.46	11241.34	40.4606695
-104.7001980	0.00						
17104.00	90.15	90.40	7016.85	11343.47	-220.15	11341.34	40.4606675
-104.6998387	0.00						
17204.00	90.15	90.40	7016.58	11443.46	-220.84	11441.33	40.4606654
-104.6994793	0.00						
17304.00	90.15	90.40	7016.32	11543.46	-221.53	11541.33	40.4606634
-104.6991200	0.00						
17404.00	90.15	90.40	7016.06	11643.45	-222.22	11641.33	40.4606614
-104.6987606	0.00						
17504.00	90.15	90.40	7015.80	11743.44	-222.91	11741.33	40.4606594
-104.6984013	0.00						
17604.00	90.15	90.40	7015.54	11843.43	-223.60	11841.32	40.4606573
-104.6980419	0.00						
17704.00	90.15	90.40	7015.27	11943.43	-224.29	11941.32	40.4606553
-104.6976826	0.00						
17804.00	90.15	90.40	7015.01	12043.42	-224.98	12041.32	40.4606533
-104.6973232	0.00						
17808.49	90.15	90.40	7015.00	12047.91	-225.01	12045.81	40.4606532
-104.6973071	0.00						



Planned Wellpath Report

SEELEY FEDERAL 8N-30C-L (REV-A.0) PWP

Page 1 of 10



REFERENCE WELLPATH IDENTIFICATION

Operator	SRC ENERGY	Slot	SLOT#12 SEELEY FEDERAL 8N-30C-L (1933'FNL & 1594'FEL, SEC.26)
Area	COLORADO	Well	SEELEY FEDERAL 8N-30C-L
Field	WELD COUNTY (NAD83,TRUE NORTH)	Wellbore	SEELEY FEDERAL 8N-30C-L PWB
Facility	SEC.26-T06N-R66W		

REPORT SETUP INFORMATION

Projection System	NAD83 / Lambert Colorado SP, Northern Zone (501), US feet	Software System	WellArchitect® 5.0
North Reference	True	User	Doddanna
Scale	0.999964	Report Generated	5/10/2018 at 5:17:00 PM
Convergence at slot	0.49° East	Database/Source file	WellArchitectDB/SEELEY_FEDERAL_8N-30C-L_REV-A.0_PWP.xml

WELLPATH LOCATION

	Local coordinates		Grid coordinates		Geographic coordinates	
	North[ft]	East[ft]	Easting[US ft]	Northing[US ft]	Latitude	Longitude
Slot Location	-220.09	-1.95	3211308.39	1411789.07	40°27'40.604"N	104°44'26.142"W
Facility Reference Pt			3211308.46	1412009.16	40°27'42.779"N	104°44'26.117"W
Field Reference Pt			3171284.48	1426358.81	40°30'07.643"N	104°53'02.634"W

WELLPATH DATUM

Calculation method	Minimum curvature	PROPETRO 12 (4') (RKB) to Facility Vertical Datum	4701.00ft
Horizontal Reference Pt	Slot	PROPETRO 12 (4') (RKB) to Mean Sea Level	4701.00ft
Vertical Reference Pt	PROPETRO 12 (4') (RKB)	PROPETRO 12 (4') (RKB) to Mud Line at Slot (SLOT#12 SEELEY FEDERAL 8N-30C-L (1933'FNL & 1594'FEL, SEC.26))	4701.00ft
MD Reference Pt	PROPETRO 12 (4') (RKB)	Section Origin	N 0.00, E 0.00 ft
Field Vertical Reference	Mean Sea Level	Section Azimuth	91.07°



SRC ENERGY

Planned Wellpath Report

SEELEY FEDERAL 8N-30C-L (REV-A.0) PWP

Page 2 of 10

**REFERENCE WELLPATH IDENTIFICATION**

Operator	SRC ENERGY	Slot	SLOT#12 SEELEY FEDERAL 8N-30C-L (1933'FNL & 1594'FEL, SEC.26)
Area	COLORADO	Well	SEELEY FEDERAL 8N-30C-L
Field	WELD COUNTY (NAD83,TRUE NORTH)	Wellbore	SEELEY FEDERAL 8N-30C-L PWB
Facility	SEC.26-T06N-R66W		

WELLPATH DATA (185 stations) † = interpolated/extrapolated station

MD [ft]	Inclination [°]	Azimuth [°]	TVD [ft]	Vert Sect [ft]	North [ft]	East [ft]	DLS [°/100ft]	Comments
0.00†	0.000	97.050	0.00	0.00	0.00	0.00	0.00	
4.00	0.000	97.050	4.00	0.00	0.00	0.00	0.00	Tie On
104.00†	0.000	97.050	104.00	0.00	0.00	0.00	0.00	
200.00	0.000	97.050	200.00	0.00	0.00	0.00	0.00	End of Tangent
204.00†	0.080	97.050	204.00	0.00	0.00	0.00	2.00	
304.00†	2.080	97.050	303.98	1.88	-0.23	1.87	2.00	
404.00†	4.080	97.050	403.83	7.22	-0.89	7.21	2.00	
504.00†	6.080	97.050	503.43	16.03	-1.98	15.99	2.00	
604.00†	8.080	97.050	602.66	28.28	-3.49	28.22	2.00	
704.00†	10.080	97.050	701.40	43.98	-5.43	43.89	2.00	
727.32	10.546	97.050	724.35	48.13	-5.94	48.03	2.00	End of Build (XS)
804.00†	10.546	97.050	799.73	62.09	-7.66	61.96	0.00	
904.00†	10.546	97.050	898.04	80.29	-9.91	80.12	0.00	
1004.00†	10.546	97.050	996.35	98.50	-12.16	98.29	0.00	
1104.00†	10.546	97.050	1094.66	116.70	-14.40	116.45	0.00	
1204.00†	10.546	97.050	1192.97	134.90	-16.65	134.62	0.00	
1304.00†	10.546	97.050	1291.29	153.11	-18.90	152.78	0.00	
1404.00†	10.546	97.050	1389.60	171.31	-21.14	170.95	0.00	
1504.00†	10.546	97.050	1487.91	189.52	-23.39	189.11	0.00	
1604.00†	10.546	97.050	1586.22	207.72	-25.64	207.28	0.00	
1704.00†	10.546	97.050	1684.53	225.92	-27.88	225.44	0.00	
1804.00†	10.546	97.050	1782.84	244.13	-30.13	243.61	0.00	
1904.00†	10.546	97.050	1881.15	262.33	-32.38	261.77	0.00	
2004.00†	10.546	97.050	1979.46	280.53	-34.62	279.94	0.00	
2104.00†	10.546	97.050	2077.77	298.74	-36.87	298.10	0.00	
2204.00†	10.546	97.050	2176.08	316.94	-39.11	316.27	0.00	
2304.00†	10.546	97.050	2274.39	335.14	-41.36	334.43	0.00	
2404.00†	10.546	97.050	2372.70	353.35	-43.61	352.60	0.00	
2504.00†	10.546	97.050	2471.01	371.55	-45.85	370.76	0.00	
2604.00†	10.546	97.050	2569.32	389.76	-48.10	388.93	0.00	



Planned Wellpath Report

SEELEY FEDERAL 8N-30C-L (REV-A.0) PWP

Page 3 of 10



REFERENCE WELLPATH IDENTIFICATION			
Operator	SRC ENERGY	Slot	SLOT#12 SEELEY FEDERAL 8N-30C-L (1933'FNL & 1594'FEL, SEC.26)
Area	COLORADO	Well	SEELEY FEDERAL 8N-30C-L
Field	WELD COUNTY (NAD83,TRUE NORTH)	Wellbore	SEELEY FEDERAL 8N-30C-L PWB
Facility	SEC.26-T06N-R66W		

WELLPATH DATA (185 stations) † = interpolated/extrapolated station								
MD [ft]	Inclination [°]	Azimuth [°]	TVD [ft]	Vert Sect [ft]	North [ft]	East [ft]	DLS [°/100ft]	Comments
2704.00†	10.546	97.050	2667.63	407.96	-50.35	407.09	0.00	
2804.00†	10.546	97.050	2765.95	426.16	-52.59	425.25	0.00	
2904.00†	10.546	97.050	2864.26	444.37	-54.84	443.42	0.00	
3004.00†	10.546	97.050	2962.57	462.57	-57.09	461.58	0.00	
3104.00†	10.546	97.050	3060.88	480.77	-59.33	479.75	0.00	
3204.00†	10.546	97.050	3159.19	498.98	-61.58	497.91	0.00	
3304.00†	10.546	97.050	3257.50	517.18	-63.83	516.08	0.00	
3404.00†	10.546	97.050	3355.81	535.38	-66.07	534.24	0.00	
3504.00†	10.546	97.050	3454.12	553.59	-68.32	552.41	0.00	
3604.00†	10.546	97.050	3552.43	571.79	-70.57	570.57	0.00	
3704.00†	10.546	97.050	3650.74	590.00	-72.81	588.74	0.00	
3804.00†	10.546	97.050	3749.05	608.20	-75.06	606.90	0.00	
3904.00†	10.546	97.050	3847.36	626.40	-77.31	625.07	0.00	
4004.00†	10.546	97.050	3945.67	644.61	-79.55	643.23	0.00	
4104.00†	10.546	97.050	4043.98	662.81	-81.80	661.40	0.00	
4204.00†	10.546	97.050	4142.30	681.01	-84.05	679.56	0.00	
4304.00†	10.546	97.050	4240.61	699.22	-86.29	697.73	0.00	
4404.00†	10.546	97.050	4338.92	717.42	-88.54	715.89	0.00	
4504.00†	10.546	97.050	4437.23	735.62	-90.79	734.06	0.00	
4604.00†	10.546	97.050	4535.54	753.83	-93.03	752.22	0.00	
4704.00†	10.546	97.050	4633.85	772.03	-95.28	770.39	0.00	
4804.00†	10.546	97.050	4732.16	790.24	-97.53	788.55	0.00	
4904.00†	10.546	97.050	4830.47	808.44	-99.77	806.72	0.00	
5004.00†	10.546	97.050	4928.78	826.64	-102.02	824.88	0.00	
5104.00†	10.546	97.050	5027.09	844.85	-104.27	843.05	0.00	
5204.00†	10.546	97.050	5125.40	863.05	-106.51	861.21	0.00	
5304.00†	10.546	97.050	5223.71	881.25	-108.76	879.38	0.00	
5404.00†	10.546	97.050	5322.02	899.46	-111.01	897.54	0.00	
5504.00†	10.546	97.050	5420.33	917.66	-113.25	915.71	0.00	
5604.00†	10.546	97.050	5518.64	935.86	-115.50	933.87	0.00	



Planned Wellpath Report

SEELEY FEDERAL 8N-30C-L (REV-A.0) PWP

Page 4 of 10



REFERENCE WELLPATH IDENTIFICATION			
Operator	SRC ENERGY	Slot	SLOT#12 SEELEY FEDERAL 8N-30C-L (1933'FNL & 1594'FEL, SEC.26)
Area	COLORADO	Well	SEELEY FEDERAL 8N-30C-L
Field	WELD COUNTY (NAD83,TRUE NORTH)	Wellbore	SEELEY FEDERAL 8N-30C-L PWB
Facility	SEC.26-T06N-R66W		

WELLPATH DATA (185 stations) † = interpolated/extrapolated station								Comments
MD [ft]	Inclination [°]	Azimuth [°]	TVD [ft]	Vert Sect [ft]	North [ft]	East [ft]	DLS [°/100ft]	
5704.00†	10.546	97.050	5616.96	954.07	-117.75	952.04	0.00	
5804.00†	10.546	97.050	5715.27	972.27	-119.99	970.20	0.00	
5904.00†	10.546	97.050	5813.58	990.48	-122.24	988.37	0.00	
6004.00†	10.546	97.050	5911.89	1008.68	-124.48	1006.53	0.00	
6104.00†	10.546	97.050	6010.20	1026.88	-126.73	1024.70	0.00	
6204.00†	10.546	97.050	6108.51	1045.09	-128.98	1042.86	0.00	
6304.00†	10.546	97.050	6206.82	1063.29	-131.22	1061.02	0.00	
6404.00†	10.546	97.050	6305.13	1081.49	-133.47	1079.19	0.00	
6504.00†	10.546	97.050	6403.44	1099.70	-135.72	1097.35	0.00	
6604.00†	10.546	97.050	6501.75	1117.90	-137.96	1115.52	0.00	
6623.82	10.546	97.050	6521.24	1121.51	-138.41	1119.12	0.00	End of Tangent (XS)
6704.00†	17.732	94.266	6598.94	1141.02	-140.22	1138.60	9.00	
6804.00†	26.717	92.854	6691.41	1178.77	-142.48	1176.32	9.00	
6904.00†	35.709	92.118	6776.85	1230.53	-144.68	1228.04	9.00	
7004.00†	44.704	91.647	6853.15	1295.01	-146.77	1292.49	9.00	
7104.00†	53.700	91.306	6918.42	1370.63	-148.71	1368.09	9.00	
7204.00†	62.697	91.036	6971.06	1455.53	-150.43	1452.98	9.00	
7304.00†	71.695	90.807	7009.78	1547.62	-151.91	1545.05	9.00	
7404.00†	80.693	90.601	7033.62	1644.63	-153.10	1642.06	9.00	
7504.00†	89.691	90.405	7041.99	1744.17	-153.97	1741.60	9.00	
7509.11	90.150	90.395	7042.00†	1749.28	-154.00	1746.71	9.00	End of 3D Arc (XS)
7604.00†	90.150	90.395	7041.75	1844.16	-154.66	1841.60	0.00	
7704.00†	90.150	90.395	7041.49	1944.16	-155.35	1941.59	0.00	
7804.00†	90.150	90.395	7041.23	2044.15	-156.04	2041.59	0.00	
7904.00†	90.150	90.395	7040.96	2144.14	-156.73	2141.59	0.00	
8004.00†	90.150	90.395	7040.70	2244.13	-157.42	2241.59	0.00	
8104.00†	90.150	90.395	7040.44	2344.13	-158.10	2341.58	0.00	
8204.00†	90.150	90.395	7040.18	2444.12	-158.79	2441.58	0.00	
8304.00†	90.150	90.395	7039.92	2544.11	-159.48	2541.58	0.00	
8404.00†	90.150	90.395	7039.65	2644.10	-160.17	2641.57	0.00	



SRC ENERGY

Planned Wellpath Report

SEELEY FEDERAL 8N-30C-L (REV-A.0) PWP

Page 5 of 10

**REFERENCE WELLPATH IDENTIFICATION**

Operator	SRC ENERGY	Slot	SLOT#12 SEELEY FEDERAL 8N-30C-L (1933'FNL & 1594'FEL, SEC.26)
Area	COLORADO	Well	SEELEY FEDERAL 8N-30C-L
Field	WELD COUNTY (NAD83,TRUE NORTH)	Wellbore	SEELEY FEDERAL 8N-30C-L PWB
Facility	SEC.26-T06N-R66W		

WELLPATH DATA (185 stations) † = interpolated/extrapolated station

MD [ft]	Inclination [°]	Azimuth [°]	TVD [ft]	Vert Sect [ft]	North [ft]	East [ft]	DLS [°/100ft]	Comments
8504.00†	90.150	90.395	7039.39	2744.10	-160.86	2741.57	0.00	
8604.00†	90.150	90.395	7039.13	2844.09	-161.55	2841.57	0.00	
8704.00†	90.150	90.395	7038.87	2944.08	-162.24	2941.57	0.00	
8804.00†	90.150	90.395	7038.61	3044.08	-162.93	3041.56	0.00	
8904.00†	90.150	90.395	7038.34	3144.07	-163.62	3141.56	0.00	
9004.00†	90.150	90.395	7038.08	3244.06	-164.31	3241.56	0.00	
9104.00†	90.150	90.395	7037.82	3344.05	-165.00	3341.56	0.00	
9204.00†	90.150	90.395	7037.56	3444.05	-165.69	3441.55	0.00	
9304.00†	90.150	90.395	7037.29	3544.04	-166.38	3541.55	0.00	
9404.00†	90.150	90.395	7037.03	3644.03	-167.07	3641.55	0.00	
9504.00†	90.150	90.395	7036.77	3744.02	-167.76	3741.54	0.00	
9604.00†	90.150	90.395	7036.51	3844.02	-168.45	3841.54	0.00	
9704.00†	90.150	90.395	7036.25	3944.01	-169.13	3941.54	0.00	
9804.00†	90.150	90.395	7035.98	4044.00	-169.82	4041.54	0.00	
9904.00†	90.150	90.395	7035.72	4144.00	-170.51	4141.53	0.00	
10004.00†	90.150	90.395	7035.46	4243.99	-171.20	4241.53	0.00	
10104.00†	90.150	90.395	7035.20	4343.98	-171.89	4341.53	0.00	
10204.00†	90.150	90.395	7034.94	4443.97	-172.58	4441.53	0.00	
10304.00†	90.150	90.395	7034.67	4543.97	-173.27	4541.52	0.00	
10404.00†	90.150	90.395	7034.41	4643.96	-173.96	4641.52	0.00	
10504.00†	90.150	90.395	7034.15	4743.95	-174.65	4741.52	0.00	
10604.00†	90.150	90.395	7033.89	4843.94	-175.34	4841.51	0.00	
10704.00†	90.150	90.395	7033.62	4943.94	-176.03	4941.51	0.00	
10804.00†	90.150	90.395	7033.36	5043.93	-176.72	5041.51	0.00	
10904.00†	90.150	90.395	7033.10	5143.92	-177.41	5141.51	0.00	
11004.00†	90.150	90.395	7032.84	5243.92	-178.10	5241.50	0.00	
11104.00†	90.150	90.395	7032.58	5343.91	-178.79	5341.50	0.00	
11204.00†	90.150	90.395	7032.31	5443.90	-179.48	5441.50	0.00	
11304.00†	90.150	90.395	7032.05	5543.89	-180.16	5541.50	0.00	
11404.00†	90.150	90.395	7031.79	5643.89	-180.85	5641.49	0.00	



Planned Wellpath Report

SEELEY FEDERAL 8N-30C-L (REV-A.0) PWP

Page 6 of 10



REFERENCE WELLPATH IDENTIFICATION			
Operator	SRC ENERGY	Slot	SLOT#12 SEELEY FEDERAL 8N-30C-L (1933'FNL & 1594'FEL, SEC.26)
Area	COLORADO	Well	SEELEY FEDERAL 8N-30C-L
Field	WELD COUNTY (NAD83,TRUE NORTH)	Wellbore	SEELEY FEDERAL 8N-30C-L PWB
Facility	SEC.26-T06N-R66W		

WELLPATH DATA (185 stations) † = interpolated/extrapolated station								
MD [ft]	Inclination [°]	Azimuth [°]	TVD [ft]	Vert Sect [ft]	North [ft]	East [ft]	DLS [°/100ft]	Comments
11504.00†	90.150	90.395	7031.53	5743.88	-181.54	5741.49	0.00	
11604.00†	90.150	90.395	7031.27	5843.87	-182.23	5841.49	0.00	
11704.00†	90.150	90.395	7031.00	5943.86	-182.92	5941.48	0.00	
11804.00†	90.150	90.395	7030.74	6043.86	-183.61	6041.48	0.00	
11904.00†	90.150	90.395	7030.48	6143.85	-184.30	6141.48	0.00	
12004.00†	90.150	90.395	7030.22	6243.84	-184.99	6241.48	0.00	
12104.00†	90.150	90.395	7029.95	6343.84	-185.68	6341.47	0.00	
12204.00†	90.150	90.395	7029.69	6443.83	-186.37	6441.47	0.00	
12304.00†	90.150	90.395	7029.43	6543.82	-187.06	6541.47	0.00	
12404.00†	90.150	90.395	7029.17	6643.81	-187.75	6641.47	0.00	
12504.00†	90.150	90.395	7028.91	6743.81	-188.44	6741.46	0.00	
12604.00†	90.150	90.395	7028.64	6843.80	-189.13	6841.46	0.00	
12704.00†	90.150	90.395	7028.38	6943.79	-189.82	6941.46	0.00	
12804.00†	90.150	90.395	7028.12	7043.78	-190.51	7041.45	0.00	
12904.00†	90.150	90.395	7027.86	7143.78	-191.20	7141.45	0.00	
13004.00†	90.150	90.395	7027.60	7243.77	-191.88	7241.45	0.00	
13104.00†	90.150	90.395	7027.33	7343.76	-192.57	7341.45	0.00	
13204.00†	90.150	90.395	7027.07	7443.76	-193.26	7441.44	0.00	
13304.00†	90.150	90.395	7026.81	7543.75	-193.95	7541.44	0.00	
13404.00†	90.150	90.395	7026.55	7643.74	-194.64	7641.44	0.00	
13504.00†	90.150	90.395	7026.28	7743.73	-195.33	7741.44	0.00	
13604.00†	90.150	90.395	7026.02	7843.73	-196.02	7841.43	0.00	
13704.00†	90.150	90.395	7025.76	7943.72	-196.71	7941.43	0.00	
13804.00†	90.150	90.395	7025.50	8043.71	-197.40	8041.43	0.00	
13904.00†	90.150	90.395	7025.24	8143.70	-198.09	8141.42	0.00	
14004.00†	90.150	90.395	7024.97	8243.70	-198.78	8241.42	0.00	
14104.00†	90.150	90.395	7024.71	8343.69	-199.47	8341.42	0.00	
14204.00†	90.150	90.395	7024.45	8443.68	-200.16	8441.42	0.00	
14304.00†	90.150	90.395	7024.19	8543.67	-200.85	8541.41	0.00	
14404.00†	90.150	90.395	7023.92	8643.67	-201.54	8641.41	0.00	



Planned Wellpath Report

SEELEY FEDERAL 8N-30C-L (REV-A.0) PWP

Page 7 of 10



REFERENCE WELLPATH IDENTIFICATION			
Operator	SRC ENERGY	Slot	SLOT#12 SEELEY FEDERAL 8N-30C-L (1933'FNL & 1594'FEL, SEC.26)
Area	COLORADO	Well	SEELEY FEDERAL 8N-30C-L
Field	WELD COUNTY (NAD83,TRUE NORTH)	Wellbore	SEELEY FEDERAL 8N-30C-L PWB
Facility	SEC.26-T06N-R66W		

WELLPATH DATA (185 stations) † = interpolated/extrapolated station								
MD [ft]	Inclination [°]	Azimuth [°]	TVD [ft]	Vert Sect [ft]	North [ft]	East [ft]	DLS [°/100ft]	Comments
14504.00†	90.150	90.395	7023.66	8743.66	-202.23	8741.41	0.00	
14604.00†	90.150	90.395	7023.40	8843.65	-202.91	8841.41	0.00	
14704.00†	90.150	90.395	7023.14	8943.65	-203.60	8941.40	0.00	
14804.00†	90.150	90.395	7022.88	9043.64	-204.29	9041.40	0.00	
14904.00†	90.150	90.395	7022.61	9143.63	-204.98	9141.40	0.00	
15004.00†	90.150	90.395	7022.35	9243.62	-205.67	9241.39	0.00	
15104.00†	90.150	90.395	7022.09	9343.62	-206.36	9341.39	0.00	
15204.00†	90.150	90.395	7021.83	9443.61	-207.05	9441.39	0.00	
15304.00†	90.150	90.395	7021.57	9543.60	-207.74	9541.39	0.00	
15404.00†	90.150	90.395	7021.30	9643.59	-208.43	9641.38	0.00	
15504.00†	90.150	90.395	7021.04	9743.59	-209.12	9741.38	0.00	
15604.00†	90.150	90.395	7020.78	9843.58	-209.81	9841.38	0.00	
15704.00†	90.150	90.395	7020.52	9943.57	-210.50	9941.38	0.00	
15804.00†	90.150	90.395	7020.25	10043.57	-211.19	10041.37	0.00	
15904.00†	90.150	90.395	7019.99	10143.56	-211.88	10141.37	0.00	
16004.00†	90.150	90.395	7019.73	10243.55	-212.57	10241.37	0.00	
16104.00†	90.150	90.395	7019.47	10343.54	-213.26	10341.36	0.00	
16204.00†	90.150	90.395	7019.21	10443.54	-213.94	10441.36	0.00	
16304.00†	90.150	90.395	7018.94	10543.53	-214.63	10541.36	0.00	
16404.00†	90.150	90.395	7018.68	10643.52	-215.32	10641.36	0.00	
16504.00†	90.150	90.395	7018.42	10743.51	-216.01	10741.35	0.00	
16604.00†	90.150	90.395	7018.16	10843.51	-216.70	10841.35	0.00	
16704.00†	90.150	90.395	7017.90	10943.50	-217.39	10941.35	0.00	
16804.00†	90.150	90.395	7017.63	11043.49	-218.08	11041.35	0.00	
16904.00†	90.150	90.395	7017.37	11143.49	-218.77	11141.34	0.00	
17004.00†	90.150	90.395	7017.11	11243.48	-219.46	11241.34	0.00	
17104.00†	90.150	90.395	7016.85	11343.47	-220.15	11341.34	0.00	
17204.00†	90.150	90.395	7016.58	11443.46	-220.84	11441.33	0.00	
17304.00†	90.150	90.395	7016.32	11543.46	-221.53	11541.33	0.00	
17404.00†	90.150	90.395	7016.06	11643.45	-222.22	11641.33	0.00	



Planned Wellpath Report

SEELEY FEDERAL 8N-30C-L (REV-A.0) PWP

Page 8 of 10



REFERENCE WELLPATH IDENTIFICATION

Operator	SRC ENERGY	Slot	SLOT#12 SEELEY FEDERAL 8N-30C-L (1933'FNL & 1594'FEL, SEC.26)
Area	COLORADO	Well	SEELEY FEDERAL 8N-30C-L
Field	WELD COUNTY (NAD83,TRUE NORTH)	Wellbore	SEELEY FEDERAL 8N-30C-L PWB
Facility	SEC.26-T06N-R66W		

WELLPATH DATA (185 stations) † = interpolated/extrapolated station

MD [ft]	Inclination [°]	Azimuth [°]	TVD [ft]	Vert Sect [ft]	North [ft]	East [ft]	DLS [°/100ft]	Comments
17504.00†	90.150	90.395	7015.80	11743.44	-222.91	11741.33	0.00	
17604.00†	90.150	90.395	7015.54	11843.43	-223.60	11841.32	0.00	
17704.00†	90.150	90.395	7015.27	11943.43	-224.29	11941.32	0.00	
17804.00†	90.150	90.395	7015.01	12043.42	-224.98	12041.32	0.00	
17808.49	90.150	90.395	7015.00 ²	12047.91	-225.01	12045.81	0.00	End of Tangent (XS)

HOLE & CASING SECTIONS

- Ref Wellbore: SEELEY FEDERAL 8N-30C-L PWB Ref Wellpath: SEELEY FEDERAL 8N-30C-L (REV-A.0) PWP

String/Diameter	Start MD [ft]	End MD [ft]	Interval [ft]	Start TVD [ft]	End TVD [ft]	Start N/S [ft]	Start E/W [ft]	End N/S [ft]	End E/W [ft]
13.5in Open Hole	4.00	1750.00	1746.00	4.00	1729.75	0.00	0.00	-28.92	233.80
9.625in Casing Surface	4.00	1750.00	1746.00	4.00	1729.75	0.00	0.00	-28.92	233.80
8.5in Open Hole	1750.00	17808.49	16058.49	1729.75	7015.00	-28.92	233.80	-225.01	12045.81



Planned Wellpath Report

SEELEY FEDERAL 8N-30C-L (REV-A.0) PWP

Page 9 of 10



REFERENCE WELLPATH IDENTIFICATION			
Operator	SRC ENERGY	Slot	SLOT#12 SEELEY FEDERAL 8N-30C-L (1933'FNL & 1594'FEL, SEC.26)
Area	COLORADO	Well	SEELEY FEDERAL 8N-30C-L
Field	WELD COUNTY (NAD83,TRUE NORTH)	Wellbore	SEELEY FEDERAL 8N-30C-L PWB
Facility	SEC.26-T06N-R66W		

TARGETS									
Name	MD [ft]	TVD [ft]	North [ft]	East [ft]	Grid East [US ft]	Grid North [US ft]	Latitude	Longitude	Shape
EAST HALF OF SEC.02-T05N-R66W		-22.00	220.11	1.93	3211308.44	1412009.18	40°27'42.779"N	104°44'26.117"W	polygon
EAST HALF OF SEC.26-T06N-R66W		-22.00	220.11	1.93	3211308.44	1412009.18	40°27'42.779"N	104°44'26.117"W	polygon
EAST HALF OF SEC.35-T06N-R66W		-22.00	220.11	1.93	3211308.44	1412009.18	40°27'42.779"N	104°44'26.117"W	polygon
SEC.25-T06N-R66W		-22.00	220.11	1.93	3211308.44	1412009.18	40°27'42.779"N	104°44'26.117"W	polygon
SEC.30-T06N-R65W		-22.00	220.11	1.93	3211308.44	1412009.18	40°27'42.779"N	104°44'26.117"W	polygon
SOUTH HALF OF SEC.19-T06N-R65W		-22.00	220.11	1.93	3211308.44	1412009.18	40°27'42.779"N	104°44'26.117"W	polygon
SOUTH HALF OF SEC.24-T06N-R66W		-22.00	220.11	1.93	3211308.44	1412009.18	40°27'42.779"N	104°44'26.117"W	polygon
SEELEY FEDERAL 8N-30C-L BHL ON PLAT (2083'FNL & 150'FEL, SEC.30)		7015.00	-185.01	12045.81	3223354.89	1411707.23	40°27'38.747"N	104°41'50.305"W	point
2) SEELEY FEDERAL 8N-30C-L BHL REV-2 (2123'FNL & 150'FEL, SEC.30)	17808.49	7015.00	-225.01	12045.81	3223355.23	1411667.24	40°27'38.352"N	104°41'50.305"W	circle
1) SEELEY FEDERAL 8N-30C-L TOP OF PROD ON PLAT (2085'FNL & 150'FWL, SEC.25)	7509.11	7042.00	-154.00	1746.71	3213056.29	1411650.04	40°27'39.082"N	104°44'03.545"W	circle



Planned Wellpath Report

SEELEY FEDERAL 8N-30C-L (REV-A.0) PWP

Page 10 of 10



REFERENCE WELLPATH IDENTIFICATION			
Operator	SRC ENERGY	Slot	SLOT#12 SEELEY FEDERAL 8N-30C-L (1933'FNL & 1594'FEL, SEC.26)
Area	COLORADO	Well	SEELEY FEDERAL 8N-30C-L
Field	WELD COUNTY (NAD83,TRUE NORTH)	Wellbore	SEELEY FEDERAL 8N-30C-L PWB
Facility	SEC.26-T06N-R66W		

SURVEY PROGRAM -				
Ref Wellbore: SEELEY FEDERAL 8N-30C-L PWB Ref Wellpath: SEELEY FEDERAL 8N-30C-L (REV-A.0) PWP				
Start MD [ft]	End MD [ft]	Positional Uncertainty Model	Log Name/Comment	Wellbore
4.00	1750.00	BHI NaviTrak (Rotating+Axial Corr)		SEELEY FEDERAL 8N-30C-L PWB
1750.00	17808.49	BHI AutoTrak Curve (IFR1, Short)		SEELEY FEDERAL 8N-30C-L PWB