



Kerr-McGee Oil & Gas Onshore LP

A subsidiary of Anadarko Petroleum Corporation

1099 18th Street
Denver, CO 80202
720-929-6000

August 24, 2018

Julie Murphy
Director, Colorado Oil and Gas Conservation Commission
Department of Natural Resources - The Chancery Building
1120 Lincoln Street, Suite 801
Denver, CO 80203

Re: **30 Day Certification Letter - 318A.e**
OJB 15-17HZ (Doc No. 401699434)
Township 1 North, Range 66 West
Section 15: SESW
Unit Acreage: 720 Acres
Proposed Spacing Unit:
01N66W: SEC 03: S2SW;
01N66W: SEC 10: W2;
01N66W: SEC 15: W2
Weld County, Colorado

Dear Director Murphy:

Kerr-McGee Oil and Gas Onshore LP ("KMG") hereby certifies that a thirty (30) day notice has been given by certified mail to all mineral owners in the proposed wellbore spacing unit. We have not received any objections to such well location, proposed spacing unit, or additional producing formation. KMG hereby respectfully requests approval of this boundary well.

If you have any questions or issues regarding this permit, please contact me at (720) 929-3242.

Sincerely,

Kerr-McGee Oil and Gas Onshore LP

A handwritten signature in black ink, appearing to be 'EH' or similar initials, written in a cursive style.

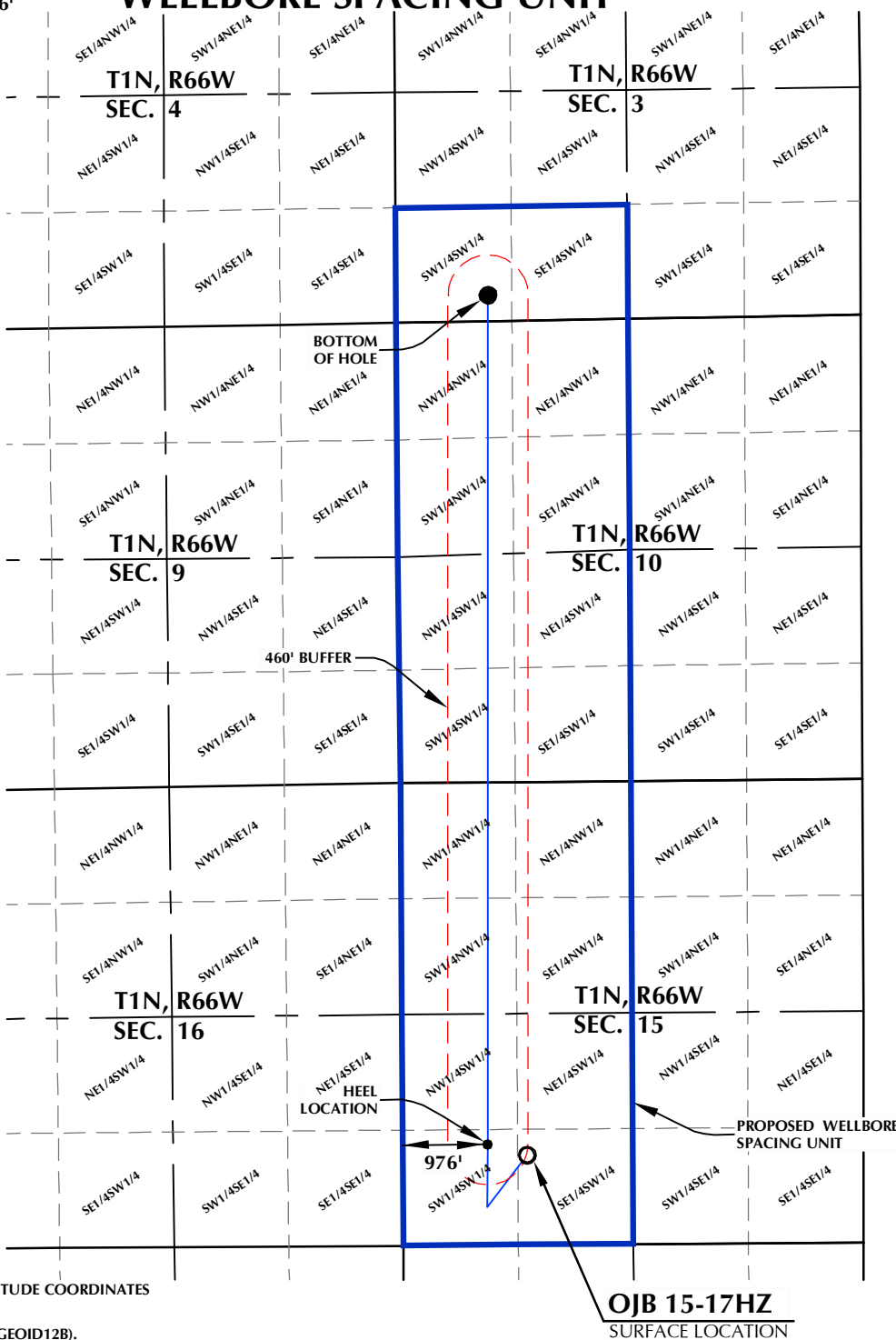
Erin Hampe
Regulatory Analyst

Enclosure

DISTANCE FROM COMPLETED
PORTION OF WELLBORE TO
NEAREST UNIT BOUNDARY= 976'

OJB 15-17HZ WELLBORE SPACING UNIT

SURFACE LOCATION: NAD 83
GROUND ELEVATION= 5071.2'
LATITUDE= 40.046833°
LONGITUDE= -104.767656°
LATITUDE= 40°02'48.598"
LONGITUDE= -104°46'03.560"
HEEL LOCATION: NAD 83
LATITUDE= 40.047178°
LONGITUDE= -104.769266°
LATITUDE= 40°02'49.841"
LONGITUDE= -104°46'09.358"
BOTTOM HOLE LOCATION: NAD 83
LATITUDE= 40.073893°
LONGITUDE= -104.768963°
LATITUDE= 40°04'26.015"
LONGITUDE= -104°46'08.267"



NOTES:

1. DRAWING LATITUDE AND LONGITUDE COORDINATES ARE NAD 83 (2011)(EPOCH:2010).
2. ELEVATION BASED ON NAVD88 (GEOID12B).
3. BASIS OF BEARING DERIVED FROM COLORADO COORDINATE SYSTEM OF 1983 NORTH ZONE.
4. ALL MEASURED DISTANCES ARE GRID.
COMBINED SCALE FACTOR: .99972498 CALCULATED FROM THE SW. CORNER OF SECTION 15, T1N, R66W.

WELL PAD - OJB 19-15HZ

OJB 15-17HZ
WELLBORE SPACING UNIT
1025' FSL & 1427' FWL SESW (SURFACE)
1150' FSL & 976' FWL SWSW (HEEL)
LOCATED IN SECTION 15
300' FSL & 1060' FWL SWSW (BOTTOM)
LOCATED IN SECTION 3
T1N, R66W, 6TH P.M.
WELD COUNTY, COLORADO

**Kerr-McGee Oil &
Gas Onshore L.P.**
1099 18th Street
Denver, Colorado 80202



CONSULTING, LLC

SHERIDAN OFFICE
1095 Saberton Avenue
Sheridan, Wyoming 82801
Phone 307-674-0609

LOVELAND OFFICE
1635 Foxtrail Drive, Suite 204
Loveland, Colorado 80538
Phone 970-776-4331

DRAFTED BY:	LMO	CHECKED BY:	RKF
DATE DRAFTED:	5/31/18	DATE SURVEYED:	4/23/18
REVISED:		FILE NAME:	18-12