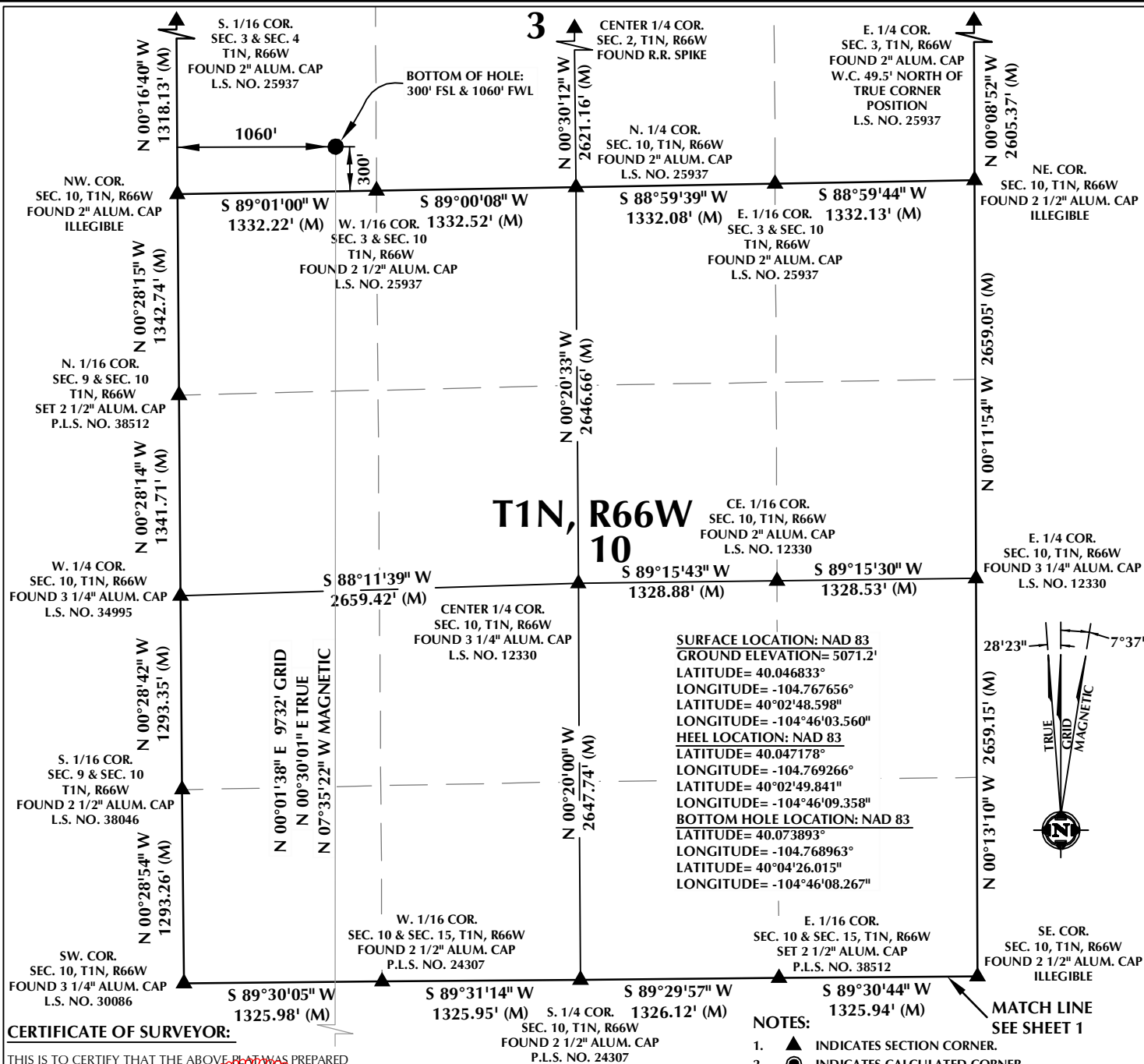


\\ANADARKO\2018\_12\_OJB\_T1N\_R66W\_SEC\_15\PLATS\PLATS\OJB 19-15HZ PLATS.dwg, 5/30/2018 4:11:35 PM, lisa



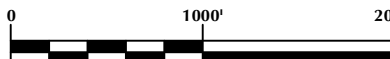
### CERTIFICATE OF SURVEYOR:

THIS IS TO CERTIFY THAT THE ABOVE PLAT WAS PREPARED FROM FIELD NOTES OF ACTUAL SURVEYS MADE BY ME OR UNDER MY SUPERVISION AND THAT THE SAME ARE TRUE AND CORRECT TO THE BEST OF MY KNOWLEDGE AND BELIEF. THIS CERTIFICATE DOES NOT REPRESENT A LAND SURVEY THAT OR IMPROVEMENT SURVEY PLAT AS DEFINED BY C.R.S. 38-50-102 AND CANNOT BE RELIED UPON TO DETERMINE OWNERSHIP.

*Randall K. French*  
 RANDALL K. FRENCH  
 PROFESSIONAL LAND SURVEYOR  
 COLORADO REGISTRATION NUMBER 38512  
 5/31/18

NOTICE:  
 ACCORDING TO COLORADO STATE LAW YOU MUST OBTAIN A LEGAL ACTION BASED UPON ANY DEFECT IN THIS SURVEY WITHIN THREE YEARS AFTER YOU FIRST DISCOVER SUCH DEFECT. IN NO EVENT MAY ANY ACTION BASED UPON ANY DEFECT IN THIS SURVEY BE COMMENCED MORE THAN TEN YEARS FROM THE DATE ON THE CERTIFICATION SHOWN HEREON.

NOTE:  
 MAGNETIC NORTH IS CURRENT AS OF 4/23/2018.  
 MAGNETIC NORTH CHANGES WEST 0°06' PER YEAR.



SCALE: 1" = 1000'

### NOTES:

- ▲ INDICATES SECTION CORNER.
- INDICATES CALCULATED CORNER.
- ELEVATION BASED ON NAVD88 (GEOID12B).
- BASIS OF BEARING DERIVED FROM COLORADO COORDINATE SYSTEM OF 1983 NORTH ZONE.
- ALL MEASURED DISTANCES ARE GRID.
- COMBINED SCALE FACTOR: .99972498 CALCULATED FROM THE SW. CORNER OF SECTION 15, T1N, R66W.
- OPERATOR: TRAVIS HOLLAND / PDOP = 1.7.
- SEE ADDENDUM TO WELL LOCATION CERTIFICATE FOR EXISTING IMPROVEMENTS WITHIN 500' OF THE WELL PAD.
- WELL FOOTAGES ARE MEASURED AT RIGHT ANGLES TO THE SECTION LINES.
- THE BOTTOM OF HOLE BEARS N00°01'38"E, 9732' FROM THE HEEL LOCATION.

MATCH LINE  
 SEE SHEET 1

### WELL PAD - OJB 19-15HZ

OJB 15-17HZ  
 WELL LOCATION CERTIFICATE  
 1025' FSL & 1427' FWL SESW (SURFACE)  
 1150' FSL & 976' FWL SWSW (HEEL)  
 LOCATED IN SECTION 15  
 300' FSL & 1060' FWL SWSW (BOTTOM)  
 LOCATED IN SECTION 3  
 T1N, R66W, 6TH P.M.  
 WELD COUNTY, COLORADO

**Kerr-McGee Oil &  
 Gas Onshore L.P.**  
 1099 18th Street  
 Denver, Colorado 80202



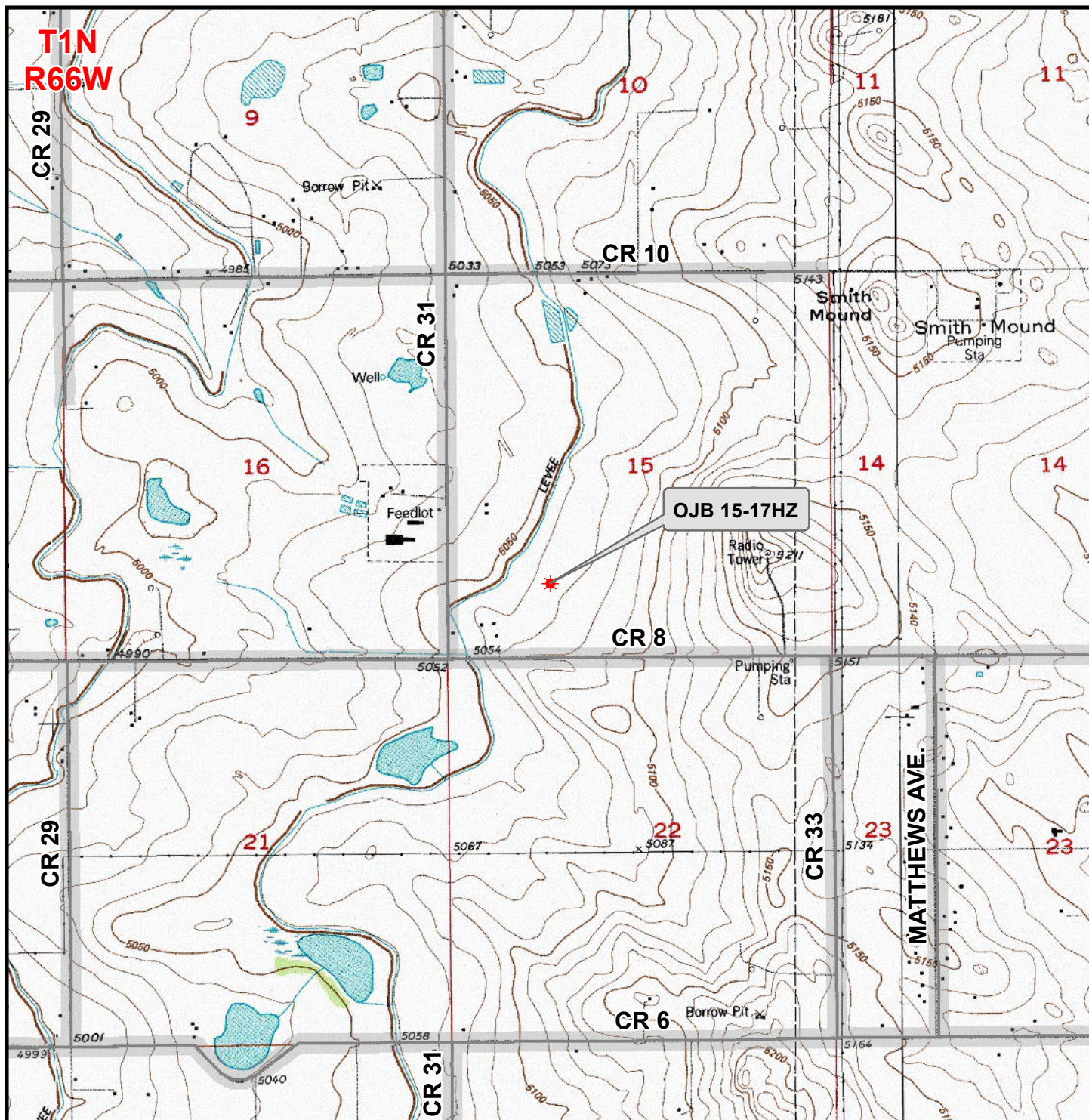
### CONSULTING, LLC

SHERIDAN OFFICE  
 1095 Saberton Avenue  
 Sheridan, Wyoming 82801  
 Phone 307-674-0609

LOVELAND OFFICE  
 1635 Foxtrail Drive, Suite 204  
 Loveland, Colorado 80538  
 Phone 970-776-4331

DRAFTED BY:	LMO	CHECKED BY:	RKF	SHEET NO:
DATE DRAFTED:	5/31/18	DATE SURVEYED:	4/23/18	2
REVISED:		FILE NAME:	18-12	2 OF 2





### Legend

- ★ Well - Proposed   
  Road - Primitive - Existing   
  Road - County - Existing  
 Road - Improved - Existing   
 Road - Highway - Existing

**WELL PAD - OJB 19-15HZ**  
**GENERAL LOCATION MAP**  
**OJB 15-17HZ**  
**LOCATED IN SECTION 15**  
**T1N, R66W, 6th P.M.**  
**WELD COUNTY, COLORADO**

**Kerr-McGee Oil &  
Gas Onshore L.P.**

1099 18th Street  
 Denver, Colorado 80202



**CONSULTING, LLC**

**SHERIDAN OFFICE**    **LOVELAND OFFICE**  
 1095 Saberton Avenue    1635 Foxtail Drive, Suite 204  
 Sheridan, Wyoming 82801    Loveland, Colorado 80538  
 Phone 307-674-0609    Phone 970-776-4331

SCALE: 1" = 2,000ft

NAD83 CO-Nft

DRAWN: DP

DATE: 31 May 2018

REVISED:

DATE: