



July 11, 2018

Ms. Julie Murphy, Director  
Colorado Oil and Gas Conservation Commission  
1120 Lincoln Street, Suite 801  
Denver, CO 80203

**RE: COGCC Rule 318A.e.: Proposed Wellbore Spacing Unit**

Chalk 37N-2C-XR  
6N-66W, Sec: 26 SE; Sec: 35 E2  
5N-66W, Sec: 2 E2  
834.46 Acres

Dear Director Murphy,

SRC Energy Inc. ("SRC Energy") is planning to drill the above referenced well in accordance with the provisions set out in COGCC Rule 318A.e. SRC Energy's proposed wellbore spacing unit consists of:

Chalk 37N-2C-XR  
6N-66W, Sec: 26 SE; Sec: 35 E2  
5N-66W, Sec: 2 E2  
834.46 Acres

SRC Energy is not the only owner within the proposed wellbore spacing unit and hereby certifies to the Director that a thirty day (30-day) notice has been given by certified mail to all owners in the proposed wellbore spacing unit, as required by COGCC Rule 318A.e. (5). Copies of the required notification letters are on file at SRC Energy's office. The required thirty (30) day notice period has elapsed absent the receipt by SRC Energy of any objection to their proposal by the owner(s) within the proposed spacing unit for the subject well. We have not received any objections to such well location or proposed spacing unit, therefore, SRC Energy hereby requests the Director approve the well.

Enclosed is the Proposed Spacing Unit Plat to assist in your review and approval of SRC Energy's proposed Application for Permit to Drill (APD) for Chalk 37N-2C-XR well. SRC Energy respectfully requests the COGCC to review the enclosed information and approve the exception location waiver request per Surface Use Agreement and APD for Chalk 37N-2C-XR.

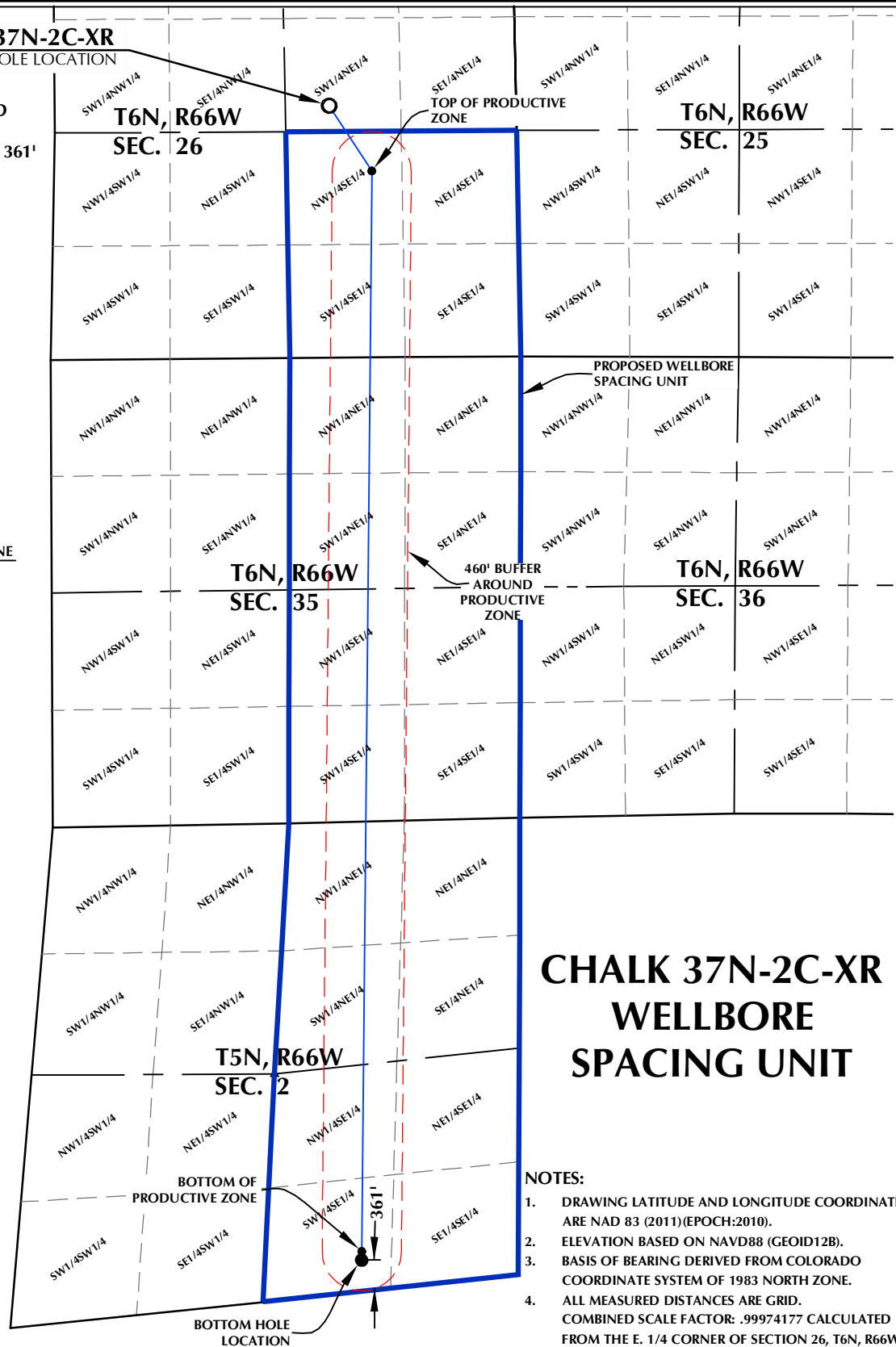
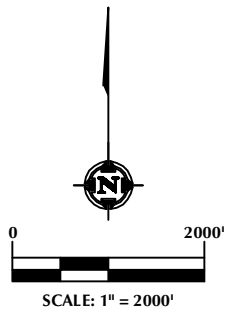
Thank you,  
*Erin Ekblad*  
Erin Ekblad  
Manager of Regulatory Affairs  
SRC Energy Inc.

Attachment: Proposed Spacing Unit Plat

# CHALK 37N-2C-XR SURFACE HOLE LOCATION

DISTANCE FROM COMPLETED  
PORTION OF WELLBORE TO  
NEAREST UNIT BOUNDARY= 361'

**SURFACE HOLE LOCATION**  
GROUND ELEVATION= 4696.0'  
LATITUDE= 40.460188°  
LONGITUDE= -104.742647°  
1/4 1/4: SW1/4 NE1/4  
**TOP OF PRODUCTIVE ZONE**  
LATITUDE= 40.458097°  
LONGITUDE= -104.740896°  
1/4 1/4: NW1/4 SE1/4  
**BOTTOM OF PRODUCTIVE ZONE**  
LATITUDE= 40.423647°  
LONGITUDE= -104.741699°  
1/4 1/4: SW1/4 SE1/4  
**BOTTOM HOLE LOCATION**  
LATITUDE= 40.423372°  
LONGITUDE= -104.741705°  
1/4 1/4: SW1/4 SE1/4



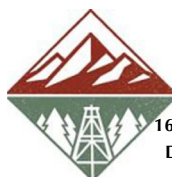
## CHALK 37N-2C-XR WELLBORE SPACING UNIT

### NOTES:

1. DRAWING LATITUDE AND LONGITUDE COORDINATES ARE NAD 83 (2011)(EPOCH:2010).
2. ELEVATION BASED ON NAVD88 (GEOID12B).
3. BASIS OF BEARING DERIVED FROM COLORADO COORDINATE SYSTEM OF 1983 NORTH ZONE.
4. ALL MEASURED DISTANCES ARE GRID.  
COMBINED SCALE FACTOR: .99974177 CALCULATED FROM THE E. 1/4 CORNER OF SECTION 26, T6N, R66W.

### WELL PAD - CHALK-SEELEY FEDERAL 7-26 PAD

CHALK 37N-2C-XR  
WELLBORE SPACING UNIT  
2330' FNL & 2171' FEL SWNE (SURFACE HOLE LOCATION)  
2167' FSL & 1693' FEL NWSE (TOP OF PRODUCTIVE ZONE)  
LOCATED IN SECTION 26, T6N, R66W, 6TH P.M.  
460' FSL & 1817' FEL SWSE (BOTTOM OF PRODUCTIVE ZONE)  
361' FSL & 1817' FEL SWSE (BOTTOM HOLE LOCATION)  
LOCATED IN SECTION 2, T5N, R66W, 6TH P.M.  
WELD COUNTY, COLORADO



**SRC ENERGY**

1675 Broadway, Suite 2600  
Denver, Colorado 80202

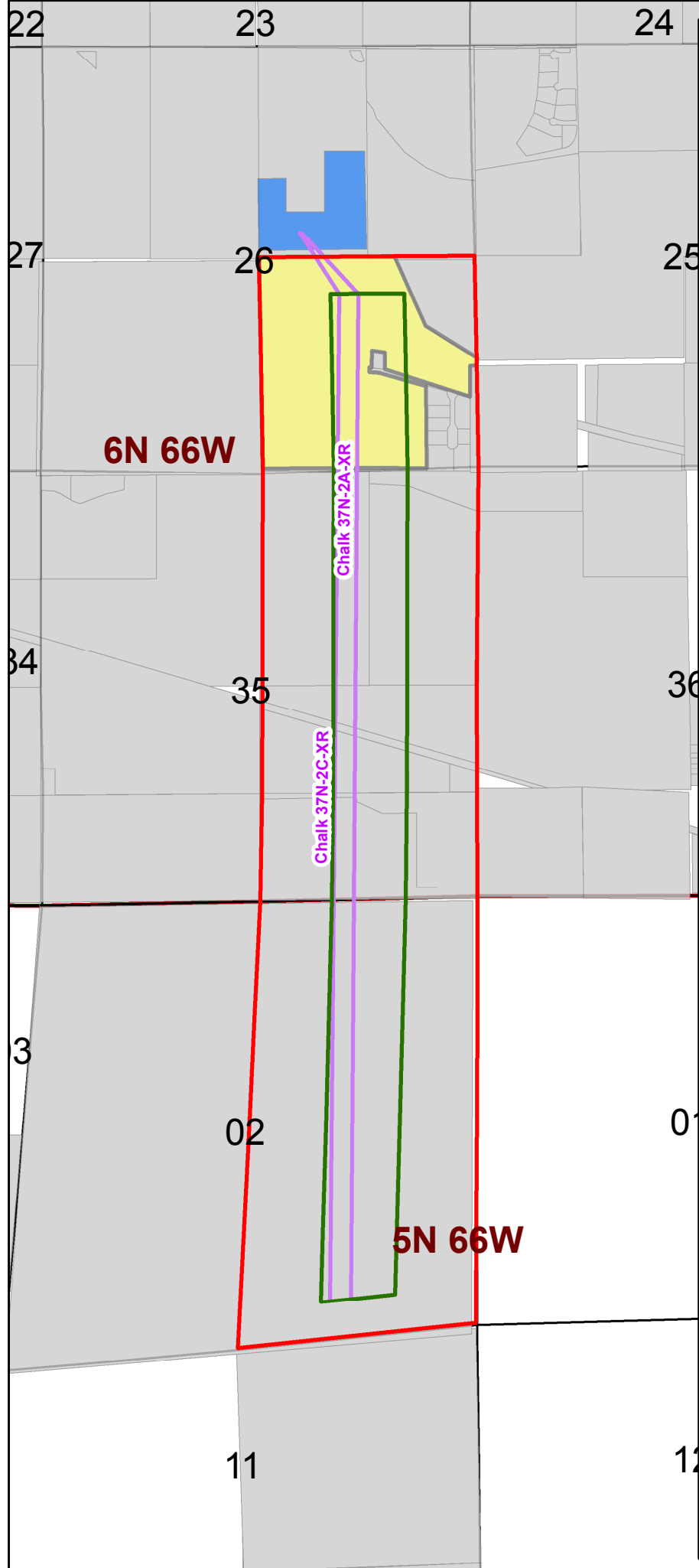


### CONSULTING, LLC

**SHERIDAN OFFICE**  
1095 Saberton Avenue  
Sheridan, Wyoming 82801  
Phone 307-674-0609

**LOVELAND OFFICE**  
6706 North Franklin Avenue  
Loveland, Colorado 80538  
Phone 970-776-4331

DRAFTED BY:	MDB	CHECKED BY:	JRS
DATE DRAFTED:	2/28/18	DATE SURVEYED:	7/7/17
REVISED:	7/20/18	FILE NAME:	17-41






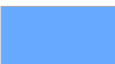


# Spacing Unit Map

## Chalk Wells

### DSU 37

### Unit 7

### Legend

-  Spacing Unit Boundary
-  Hard Line Box
-  Well Path
-  Chalk Pad
-  Herman Feit et al Lease
-  SRC Leasehold

### Lease Description

Lessor: Herman Feit et al.  
Lessee: H. L. Willett  
Reception No.: 1793398  
Lease Date: 3/27/1979  
Legal Description: 6N-66W, 6<sup>th</sup> P.M.  
Section 26: W/2SE/4;  
and parts of the E/2SE/4 better  
described in metes and bounds  
in the Lease  
Gross Acres: 127 Acres



SRC ENERGY

