

SRC ENERGY

Location: COLORADO Slot: SLOT#31 CHALK 37N-2C-XR (2330'FNL & 2171'FEL, SEC.26)
Field: WELD COUNTY (NAD83, TRUE NORTH) Well: CHALK 37N-2C-XR
Facility: SEC.26-T06N-R66W Wellbore: CHALK 37N-2C-XR PWB

Plot reference wellpath is CHALK 37N-2C-XR (REV-8.0) PWP	Grid System: NAD83 / Lambert Colorado SP, Northern Zone (501), US feet
True vertical depths are referenced to PROPETRO 12 (4) (RKB)	* = Wellpath was transformed from a different geodetic datum
Measured depths are referenced to PROPETRO 12 (4) (RKB)	North Reference: True north
PROPETRO 12 (4) (RKB) to Mean Sea Level: 4701 feet	Scale: True distance
Mean Sea Level to Mud line (At Slot: SLOT#31 CHALK 37N-2C-XR (2330'FNL & 2171'FEL, SEC.26)): 0 feet	Depths are in feet
Coordinates are in feet referenced to Slot	Created by: doddanna on 2018-08-08
	Database: WellArchitectDB2

Location Information

Facility Name	Grid East (US ft)	Grid North (US ft)	Latitude	Longitude
SEC.26-T06N-R66W	3211308.441	1412009.181	40°27'42.779"N	104°44'26.117"W
Slot	Local N (ft)	Local E (ft)	Grid East (US ft)	Grid North (US ft)
SLOT#31 CHALK 37N-2C-XR (2330'FNL & 2171'FEL, SEC.26)	-617.51	-572.93	3210740.838	1411386.812
PROPETRO 12 (4) (RKB) to Mud line (At Slot: SLOT#31 CHALK 37N-2C-XR (2330'FNL & 2171'FEL, SEC.26))				4701R
Mean Sea Level to Mud line (At Slot: SLOT#31 CHALK 37N-2C-XR (2330'FNL & 2171'FEL, SEC.26))				0R
PROPETRO 12 (4) (RKB) to Mean Sea Level				4701R

Survey Program

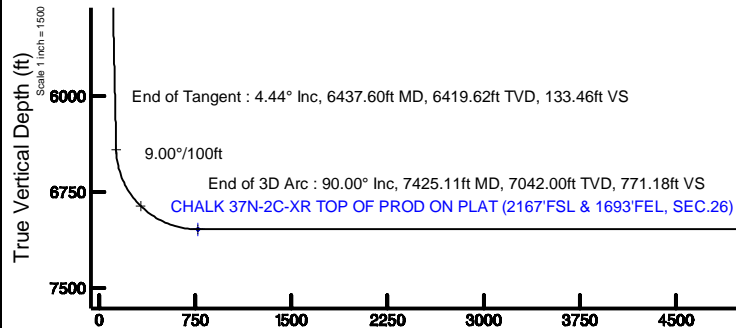
Start MD (ft)	End MD (ft)	Tool	Model	Log Name/Comment	Wellbore
4.00	1750.00	BHI NavTrak	BHI NavTrak (Rotating+Axial Corr)		CHALK 37N-2C-XR PWB
1750.00	20078.04	BHI AutoTrak Curve	BHI AutoTrak Curve (MagCAD+IFR1, Short spacing)		CHALK 37N-2C-XR PWB

Well Profile Data

Design Comment	MD (ft)	Inc (°)	Az (°)	TVD (ft)	Local N (ft)	Local E (ft)	DLS (°/100ft)	VS (ft)
Tie On	4.00	0.000	105.500	4.00	0.00	0.00	0.00	0.00
End of Tangent	300.00	0.000	105.500	300.00	0.00	0.00	0.00	0.00
End of Build	522.02	4.440	105.500	521.80	-2.30	8.29	2.00	2.46
End of Tangent	6437.60	4.440	105.500	6419.62	-124.70	449.63	0.00	133.46
End of 3D Arc	7425.11	90.000	180.821	7042.00	-761.80	487.26	9.00	771.18
End of Tangent	14955.52	90.000	180.821	7042.00	-8291.43	379.31	0.00	8297.26
End of 3D Arc	14980.32	90.000	181.318	7042.00	-8316.23	378.84	2.00	8322.05
End of Tangent	19977.84	90.000	181.318	7042.00	-13312.43	263.93	0.00	13315.05
End of 3D Arc	19998.02	90.000	180.914	7042.00	-13332.60	263.54	2.00	13335.21
End of Tangent	20078.04	90.000	180.914	7042.00	-13412.62	262.26	0.00	13415.18

Hole and Casing Sections

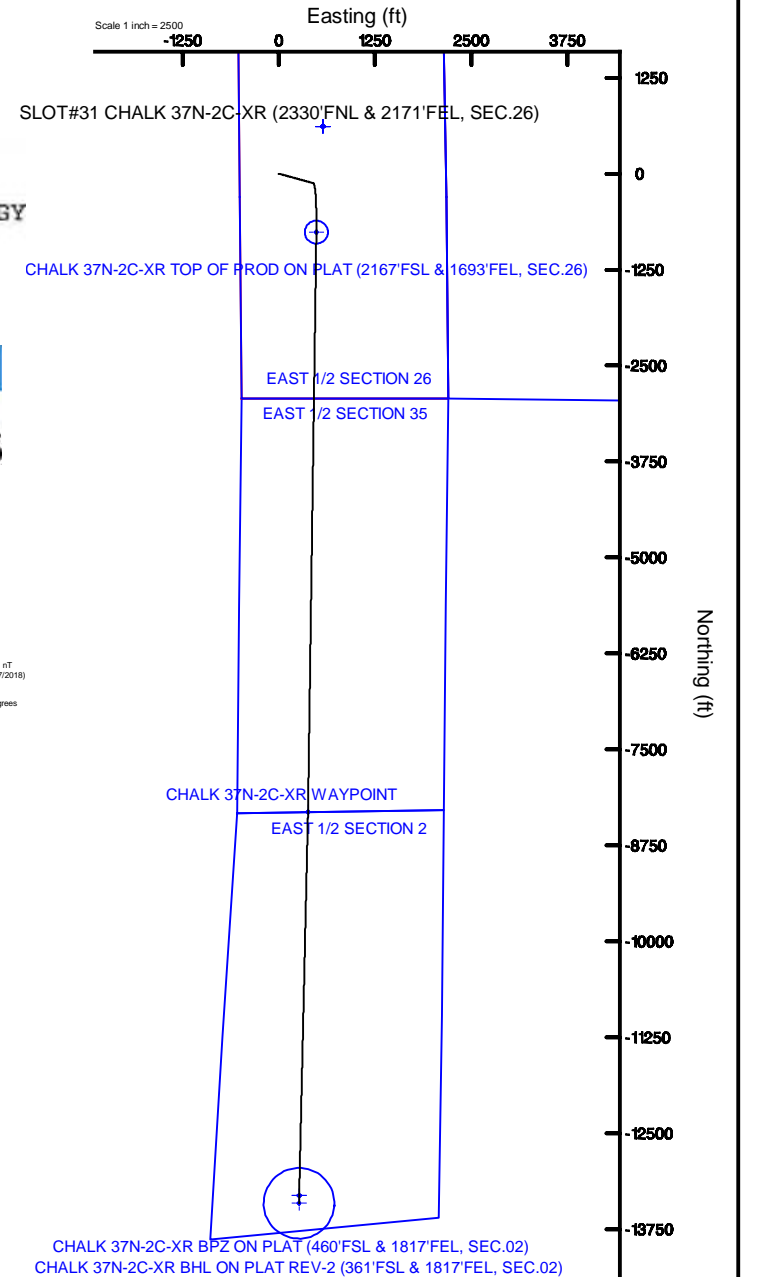
Name	Start MD (ft)	End MD (ft)	Interval (ft)	Start TVD (ft)	End TVD (ft)	Start Local N (ft)	Start Local E (ft)	End Local N (ft)	End Local E (ft)	Wellbore
13.5in Open Hole	4.00	1750.00	1746.00	4.00	1746.09	0.00	0.00	-27.71	99.90	CHALK 37N-2C-XR PWB
9.625in Casing Surface	4.00	1750.00	1746.00	4.00	1746.09	0.00	0.00	-27.71	99.90	CHALK 37N-2C-XR PWB
8.5in Open Hole	1750.00	20078.04	18328.04	1746.09	7042.00	-27.71	99.90	-13412.62	262.26	CHALK 37N-2C-XR PWB



Targets									
Target	MD (ft)	Inc (°)	Az (°)	TVD (ft)	Local N (ft)	Local E (ft)	DLS (°/100ft)	VS (ft)	Wellbore
CHALK 37N-2C-XR PWB	4.00	0.000	105.500	4.00	0.00	0.00	0.00	0.00	CHALK 37N-2C-XR PWB
CHALK 37N-2C-XR PWB	300.00	0.000	105.500	300.00	0.00	0.00	0.00	0.00	CHALK 37N-2C-XR PWB
CHALK 37N-2C-XR PWB	522.02	4.440	105.500	521.80	-2.30	8.29	2.00	2.46	CHALK 37N-2C-XR PWB
CHALK 37N-2C-XR PWB	6437.60	4.440	105.500	6419.62	-124.70	449.63	0.00	133.46	CHALK 37N-2C-XR PWB
CHALK 37N-2C-XR PWB	7425.11	90.000	180.821	7042.00	-761.80	487.26	9.00	771.18	CHALK 37N-2C-XR PWB
CHALK 37N-2C-XR PWB	14955.52	90.000	180.821	7042.00	-8291.43	379.31	0.00	8297.26	CHALK 37N-2C-XR PWB
CHALK 37N-2C-XR PWB	14980.32	90.000	181.318	7042.00	-8316.23	378.84	2.00	8322.05	CHALK 37N-2C-XR PWB
CHALK 37N-2C-XR PWB	19977.84	90.000	181.318	7042.00	-13312.43	263.93	0.00	13315.05	CHALK 37N-2C-XR PWB
CHALK 37N-2C-XR PWB	19998.02	90.000	180.914	7042.00	-13332.60	263.54	2.00	13335.21	CHALK 37N-2C-XR PWB
CHALK 37N-2C-XR PWB	20078.04	90.000	180.914	7042.00	-13412.62	262.26	0.00	13415.18	CHALK 37N-2C-XR PWB



BGGM (1900.0 to 2019.0) Dip: 66.86° Field: 52318.8 nT
Magnetic North is 8.28 degrees East of True North (at 8/7/2018)
To correct azimuth from Magnetic to True add 8.28 degrees



End of Tangent : 90.00° Inc, 14955.52ft MD, 7042.00ft TVD, 8297.26ft VS
End of 3D Arc : 90.00° Inc, 14980.32ft MD, 7042.00ft TVD, 8322.05ft VS
CHALK 37N-2C-XR WAYPOINT

End of Tangent : 90.00° Inc, 19977.84ft MD, 7042.00ft TVD, 13315.05ft VS
End of 3D Arc : 90.00° Inc, 19998.02ft MD, 7042.00ft TVD, 13335.21ft VS
CHALK 37N-2C-XR BPZ ON PLAT (460'FSL & 1817'FEL, SEC.02)

End of Tangent : 90.00° Inc, 20078.04ft MD, 7042.00ft TVD, 13415.18ft VS
CHALK 37N-2C-XR BHL ON PLAT REV-2 (361'FSL & 1817'FEL, SEC.02)

CHALK_37N-2C-XR__REV-B.0__PWP.las

~VERSION INFORMATION

VERS. 2.0 : CWLS LOG ASCII STANDARD-VERSION 2.0

WRAP. NO : ASCII DATA SECTION CONTAINS ONE ROW PER WELLPATH STATION

~WELL INFORMATION

#MNEM	.UNITS	DATA	:DESCRIPTION
#----	.-----	----	:-----
STRT	.ft	0.00	:START MD
STOP	.ft	20078.04	:STOP MD
STEP	.ft	0.0	:STEP (non-uniform increment)
NULL	.	-999.99	:NULL
COMP	.	SRC ENERGY	:OPERATOR
WELL	.	CHALK 37N-2C-XR	:WELL
FLD	.	WELD COUNTY (NAD83,TRUE NORTH)	:FIELD
LOC	.	COLORADO	:AREA (aka: Location)
CNTY	.	N/A	:COUNTY
STAT	.	N/A	:STATE
CTRY	.	N/A	:COUNTRY
SRVC	.	Baker Hughes	:CONTRACTOR
DATE	.	04/25/2018	:LOG REV DATE
API	.		:API NUMBER

~OTHER INFORMATION

#Software: WellArchitect(R) Version 5.0

#MNEM	.UNITS	DATA	:DESCRIPTION
#----	.-----	----	:-----
WPTYPE	.	PLANNED WELLPATH	:WELLPATH TYPE
FACILITY	.	SEC.26-T06N-R66W	:FACILITY
SLOT	.	SLOT#31 CHALK 37N-2C-XR (2330'FNL & 2171'FEL, SEC.26):SLOT	:SLOT
WELLBORE	.	CHALK 37N-2C-XR PWB	:WELLBORE
WELLPATH	.	CHALK 37N-2C-XR (REV-B.0) PWP	:WELLPATH
MDREFPT	.	PROPETRO 12 (4') (RKB)	:MD REFERENCE POINT
TVDREFPT	.	PROPETRO 12 (4') (RKB)	:TVD REFERENCE POINT
LCLREFPT	.	Slot	:LOCAL COORDINATE REFERENCE PT

CHALK_37N-2C-XR__REV-B.0__PWP.las

VSAZIMUTH.deg	178.88	:VERTICAL SECTION AZIMUTH
VSORIGN .ft	0.00	:VERTICAL SECTION ORIGIN NORTH
VSORIGE .ft	0.00	:VERTICAL SECTION ORIGIN EAST

~CURVE (WELLPATH) INFORMATION

#MNEM	.UNITS	:DESCRIPTION
#----	.-----	:-----
DEPT	.ft	:MEASURED DEPTH
INC	.deg	:INCLINATION
AZI	.deg	:AZIMUTH
TVD	.ft	:TRUE VERTICAL DEPTH
SECT	.ft	:CROSS SECTION (CURTAIN/VERTICAL)
LOCALN	.ft	:LOCAL NORTH
LOCALE	.ft	:LOCAL EAST
LAT	.deg	:LATITUDE
LONG	.deg	:LONGITUDE
DLS	.deg/100ft	:DOGLEG SEVERITY

~ASCII DATA

0.00	0.00	105.50	0.00	0.00	0.00	0.00	40.4601881	-104.7426469	0.00
4.00	0.00	105.50	4.00	0.00	0.00	0.00	40.4601881	-104.7426469	0.00
104.00	0.00	105.50	104.00	0.00	0.00	0.00	40.4601881	-104.7426469	0.00
204.00	0.00	105.50	204.00	0.00	0.00	0.00	40.4601881	-104.7426469	0.00
300.00	0.00	105.50	300.00	0.00	0.00	0.00	40.4601881	-104.7426469	0.00
304.00	0.08	105.50	304.00	0.00	0.00	0.00	40.4601881	-104.7426469	2.00
404.00	2.08	105.50	403.98	0.54	-0.50	1.82	40.4601867	-104.7426404	2.00
504.00	4.08	105.50	503.83	2.08	-1.94	7.00	40.4601827	-104.7426218	2.00
522.02	4.44	105.50	521.80	2.46	-2.30	8.29	40.4601817	-104.7426172	2.00
604.00	4.44	105.50	603.53	4.28	-3.99	14.40	40.4601771	-104.7425952	0.00
704.00	4.44	105.50	703.23	6.49	-6.06	21.86	40.4601714	-104.7425684	0.00
804.00	4.44	105.50	802.93	8.70	-8.13	29.32	40.4601657	-104.7425416	0.00
904.00	4.44	105.50	902.63	10.92	-10.20	36.78	40.4601601	-104.7425148	0.00
1004.00	4.44	105.50	1002.33	13.13	-12.27	44.25	40.4601544	-104.7424879	0.00
1104.00	4.44	105.50	1102.03	15.35	-14.34	51.71	40.4601487	-104.7424611	0.00

CHALK_37N-2C-XR__REV-B.0__PWP.las

1204.00	4.44	105.50	1201.73	17.56	-16.41	59.17	40.4601430	-104.7424343	0.00
1304.00	4.44	105.50	1301.43	19.78	-18.48	66.63	40.4601373	-104.7424075	0.00
1404.00	4.44	105.50	1401.13	21.99	-20.55	74.09	40.4601317	-104.7423807	0.00
1504.00	4.44	105.50	1500.83	24.21	-22.62	81.55	40.4601260	-104.7423539	0.00
1604.00	4.44	105.50	1600.53	26.42	-24.69	89.01	40.4601203	-104.7423271	0.00
1704.00	4.44	105.50	1700.23	28.64	-26.75	96.47	40.4601146	-104.7423003	0.00
1804.00	4.44	105.50	1799.93	30.85	-28.82	103.93	40.4601089	-104.7422735	0.00
1904.00	4.44	105.50	1899.63	33.06	-30.89	111.39	40.4601033	-104.7422466	0.00
2004.00	4.44	105.50	1999.33	35.28	-32.96	118.85	40.4600976	-104.7422198	0.00
2104.00	4.44	105.50	2099.03	37.49	-35.03	126.31	40.4600919	-104.7421930	0.00
2204.00	4.44	105.50	2198.73	39.71	-37.10	133.77	40.4600862	-104.7421662	0.00
2304.00	4.44	105.50	2298.43	41.92	-39.17	141.23	40.4600805	-104.7421394	0.00
2404.00	4.44	105.50	2398.13	44.14	-41.24	148.70	40.4600749	-104.7421126	0.00
2504.00	4.44	105.50	2497.83	46.35	-43.31	156.16	40.4600692	-104.7420858	0.00
2604.00	4.44	105.50	2597.53	48.57	-45.38	163.62	40.4600635	-104.7420590	0.00
2704.00	4.44	105.50	2697.23	50.78	-47.45	171.08	40.4600578	-104.7420322	0.00
2804.00	4.44	105.50	2796.93	53.00	-49.51	178.54	40.4600521	-104.7420054	0.00
2904.00	4.44	105.50	2896.63	55.21	-51.58	186.00	40.4600465	-104.7419785	0.00
3004.00	4.44	105.50	2996.33	57.42	-53.65	193.46	40.4600408	-104.7419517	0.00
3104.00	4.44	105.50	3096.03	59.64	-55.72	200.92	40.4600351	-104.7419249	0.00
3204.00	4.44	105.50	3195.73	61.85	-57.79	208.38	40.4600294	-104.7418981	0.00
3304.00	4.44	105.50	3295.43	64.07	-59.86	215.84	40.4600237	-104.7418713	0.00
3404.00	4.44	105.50	3395.13	66.28	-61.93	223.30	40.4600181	-104.7418445	0.00
3504.00	4.44	105.50	3494.83	68.50	-64.00	230.76	40.4600124	-104.7418177	0.00
3604.00	4.44	105.50	3594.53	70.71	-66.07	238.22	40.4600067	-104.7417909	0.00
3704.00	4.44	105.50	3694.23	72.93	-68.14	245.69	40.4600010	-104.7417641	0.00
3804.00	4.44	105.50	3793.93	75.14	-70.21	253.15	40.4599953	-104.7417372	0.00
3904.00	4.44	105.50	3893.63	77.36	-72.27	260.61	40.4599897	-104.7417104	0.00
4004.00	4.44	105.50	3993.33	79.57	-74.34	268.07	40.4599840	-104.7416836	0.00
4104.00	4.44	105.50	4093.03	81.78	-76.41	275.53	40.4599783	-104.7416568	0.00
4204.00	4.44	105.50	4192.73	84.00	-78.48	282.99	40.4599726	-104.7416300	0.00
4304.00	4.44	105.50	4292.43	86.21	-80.55	290.45	40.4599669	-104.7416032	0.00
4404.00	4.44	105.50	4392.13	88.43	-82.62	297.91	40.4599613	-104.7415764	0.00
4504.00	4.44	105.50	4491.83	90.64	-84.69	305.37	40.4599556	-104.7415496	0.00

CHALK_37N-2C-XR__REV-B.0__PWP.las

4604.00	4.44	105.50	4591.52	92.86	-86.76	312.83	40.4599499	-104.7415228	0.00
4704.00	4.44	105.50	4691.22	95.07	-88.83	320.29	40.4599442	-104.7414960	0.00
4804.00	4.44	105.50	4790.92	97.29	-90.90	327.75	40.4599385	-104.7414691	0.00
4904.00	4.44	105.50	4890.62	99.50	-92.97	335.21	40.4599329	-104.7414423	0.00
5004.00	4.44	105.50	4990.32	101.72	-95.03	342.67	40.4599272	-104.7414155	0.00
5104.00	4.44	105.50	5090.02	103.93	-97.10	350.14	40.4599215	-104.7413887	0.00
5204.00	4.44	105.50	5189.72	106.15	-99.17	357.60	40.4599158	-104.7413619	0.00
5304.00	4.44	105.50	5289.42	108.36	-101.24	365.06	40.4599102	-104.7413351	0.00
5404.00	4.44	105.50	5389.12	110.57	-103.31	372.52	40.4599045	-104.7413083	0.00
5504.00	4.44	105.50	5488.82	112.79	-105.38	379.98	40.4598988	-104.7412815	0.00
5604.00	4.44	105.50	5588.52	115.00	-107.45	387.44	40.4598931	-104.7412547	0.00
5704.00	4.44	105.50	5688.22	117.22	-109.52	394.90	40.4598874	-104.7412278	0.00
5804.00	4.44	105.50	5787.92	119.43	-111.59	402.36	40.4598818	-104.7412010	0.00
5904.00	4.44	105.50	5887.62	121.65	-113.66	409.82	40.4598761	-104.7411742	0.00
6004.00	4.44	105.50	5987.32	123.86	-115.73	417.28	40.4598704	-104.7411474	0.00
6104.00	4.44	105.50	6087.02	126.08	-117.80	424.74	40.4598647	-104.7411206	0.00
6204.00	4.44	105.50	6186.72	128.29	-119.86	432.20	40.4598590	-104.7410938	0.00
6304.00	4.44	105.50	6286.42	130.51	-121.93	439.66	40.4598534	-104.7410670	0.00
6404.00	4.44	105.50	6386.12	132.72	-124.00	447.13	40.4598477	-104.7410402	0.00
6437.60	4.44	105.50	6419.62	133.46	-124.70	449.63	40.4598458	-104.7410312	0.00
6504.00	8.29	149.80	6485.63	138.39	-129.53	454.52	40.4598325	-104.7410136	9.00
6604.00	16.65	166.27	6583.22	158.71	-149.72	461.56	40.4597771	-104.7409883	9.00
6704.00	25.44	171.74	6676.46	194.08	-184.96	468.06	40.4596803	-104.7409649	9.00
6804.00	34.34	174.51	6763.08	243.61	-234.39	473.86	40.4595447	-104.7409441	9.00
6904.00	43.27	176.25	6840.93	306.10	-296.79	478.82	40.4593734	-104.7409263	9.00
7004.00	52.23	177.48	6908.10	380.00	-370.63	482.81	40.4591707	-104.7409120	9.00
7104.00	61.19	178.45	6962.94	463.49	-454.08	485.73	40.4589417	-104.7409015	9.00
7204.00	70.16	179.27	7004.09	554.51	-545.09	487.52	40.4586918	-104.7408951	9.00
7304.00	79.13	180.00	7030.55	650.84	-641.42	488.12	40.4584274	-104.7408929	9.00
7404.00	88.11	180.68	7041.65	750.08	-740.69	487.53	40.4581549	-104.7408950	9.00
7425.11	90.00	180.82	7042.00	771.18	-761.80	487.26	40.4580970	-104.7408960	9.00
7504.00	90.00	180.82	7042.00	850.02	-840.68	486.13	40.4578805	-104.7409001	0.00
7604.00	90.00	180.82	7042.00	949.97	-940.67	484.69	40.4576060	-104.7409052	0.00
7704.00	90.00	180.82	7042.00	1049.91	-1040.66	483.26	40.4573316	-104.7409104	0.00

CHALK_37N-2C-XR__REV-B.0__PWP.las

7804.00	90.00	180.82	7042.00	1149.85	-1140.65	481.83	40.4570571	-104.7409155	0.00
7904.00	90.00	180.82	7042.00	1249.79	-1240.64	480.39	40.4567826	-104.7409207	0.00
8004.00	90.00	180.82	7042.00	1349.74	-1340.63	478.96	40.4565082	-104.7409259	0.00
8104.00	90.00	180.82	7042.00	1449.68	-1440.62	477.52	40.4562337	-104.7409310	0.00
8204.00	90.00	180.82	7042.00	1549.62	-1540.61	476.09	40.4559593	-104.7409362	0.00
8304.00	90.00	180.82	7042.00	1649.56	-1640.60	474.66	40.4556848	-104.7409413	0.00
8404.00	90.00	180.82	7042.00	1749.51	-1740.59	473.22	40.4554104	-104.7409465	0.00
8504.00	90.00	180.82	7042.00	1849.45	-1840.58	471.79	40.4551359	-104.7409517	0.00
8604.00	90.00	180.82	7042.00	1949.39	-1940.57	470.36	40.4548614	-104.7409568	0.00
8704.00	90.00	180.82	7042.00	2049.33	-2040.56	468.92	40.4545870	-104.7409620	0.00
8804.00	90.00	180.82	7042.00	2149.28	-2140.55	467.49	40.4543125	-104.7409671	0.00
8904.00	90.00	180.82	7042.00	2249.22	-2240.54	466.06	40.4540381	-104.7409723	0.00
9004.00	90.00	180.82	7042.00	2349.16	-2340.53	464.62	40.4537636	-104.7409774	0.00
9104.00	90.00	180.82	7042.00	2449.10	-2440.52	463.19	40.4534891	-104.7409826	0.00
9204.00	90.00	180.82	7042.00	2549.05	-2540.50	461.76	40.4532147	-104.7409878	0.00
9304.00	90.00	180.82	7042.00	2648.99	-2640.49	460.32	40.4529402	-104.7409929	0.00
9404.00	90.00	180.82	7042.00	2748.93	-2740.48	458.89	40.4526658	-104.7409981	0.00
9504.00	90.00	180.82	7042.00	2848.87	-2840.47	457.46	40.4523913	-104.7410032	0.00
9604.00	90.00	180.82	7042.00	2948.82	-2940.46	456.02	40.4521168	-104.7410084	0.00
9704.00	90.00	180.82	7042.00	3048.76	-3040.45	454.59	40.4518424	-104.7410135	0.00
9804.00	90.00	180.82	7042.00	3148.70	-3140.44	453.15	40.4515679	-104.7410187	0.00
9904.00	90.00	180.82	7042.00	3248.64	-3240.43	451.72	40.4512935	-104.7410239	0.00
10004.00	90.00	180.82	7042.00	3348.59	-3340.42	450.29	40.4510190	-104.7410290	0.00
10104.00	90.00	180.82	7042.00	3448.53	-3440.41	448.85	40.4507445	-104.7410342	0.00
10204.00	90.00	180.82	7042.00	3548.47	-3540.40	447.42	40.4504701	-104.7410393	0.00
10304.00	90.00	180.82	7042.00	3648.42	-3640.39	445.99	40.4501956	-104.7410445	0.00
10404.00	90.00	180.82	7042.00	3748.36	-3740.38	444.55	40.4499212	-104.7410496	0.00
10504.00	90.00	180.82	7042.00	3848.30	-3840.37	443.12	40.4496467	-104.7410548	0.00
10604.00	90.00	180.82	7042.00	3948.24	-3940.36	441.69	40.4493722	-104.7410600	0.00
10704.00	90.00	180.82	7042.00	4048.19	-4040.35	440.25	40.4490978	-104.7410651	0.00
10804.00	90.00	180.82	7042.00	4148.13	-4140.34	438.82	40.4488233	-104.7410703	0.00
10904.00	90.00	180.82	7042.00	4248.07	-4240.33	437.39	40.4485489	-104.7410754	0.00
11004.00	90.00	180.82	7042.00	4348.01	-4340.32	435.95	40.4482744	-104.7410806	0.00
11104.00	90.00	180.82	7042.00	4447.96	-4440.31	434.52	40.4480000	-104.7410857	0.00

CHALK_37N-2C-XR__REV-B.0__PWP.las

11204.00	90.00	180.82	7042.00	4547.90	-4540.30	433.09	40.4477255	-104.7410909	0.00
11304.00	90.00	180.82	7042.00	4647.84	-4640.29	431.65	40.4474510	-104.7410961	0.00
11404.00	90.00	180.82	7042.00	4747.78	-4740.28	430.22	40.4471766	-104.7411012	0.00
11504.00	90.00	180.82	7042.00	4847.73	-4840.27	428.78	40.4469021	-104.7411064	0.00
11604.00	90.00	180.82	7042.00	4947.67	-4940.26	427.35	40.4466277	-104.7411115	0.00
11704.00	90.00	180.82	7042.00	5047.61	-5040.25	425.92	40.4463532	-104.7411167	0.00
11804.00	90.00	180.82	7042.00	5147.55	-5140.24	424.48	40.4460787	-104.7411218	0.00
11904.00	90.00	180.82	7042.00	5247.50	-5240.23	423.05	40.4458043	-104.7411270	0.00
12004.00	90.00	180.82	7042.00	5347.44	-5340.22	421.62	40.4455298	-104.7411322	0.00
12104.00	90.00	180.82	7042.00	5447.38	-5440.21	420.18	40.4452554	-104.7411373	0.00
12204.00	90.00	180.82	7042.00	5547.32	-5540.20	418.75	40.4449809	-104.7411425	0.00
12304.00	90.00	180.82	7042.00	5647.27	-5640.19	417.32	40.4447064	-104.7411476	0.00
12404.00	90.00	180.82	7042.00	5747.21	-5740.18	415.88	40.4444320	-104.7411528	0.00
12504.00	90.00	180.82	7042.00	5847.15	-5840.17	414.45	40.4441575	-104.7411579	0.00
12604.00	90.00	180.82	7042.00	5947.09	-5940.16	413.02	40.4438831	-104.7411631	0.00
12704.00	90.00	180.82	7042.00	6047.04	-6040.15	411.58	40.4436086	-104.7411683	0.00
12804.00	90.00	180.82	7042.00	6146.98	-6140.14	410.15	40.4433341	-104.7411734	0.00
12904.00	90.00	180.82	7042.00	6246.92	-6240.12	408.72	40.4430597	-104.7411786	0.00
13004.00	90.00	180.82	7042.00	6346.87	-6340.11	407.28	40.4427852	-104.7411837	0.00
13104.00	90.00	180.82	7042.00	6446.81	-6440.10	405.85	40.4425108	-104.7411889	0.00
13204.00	90.00	180.82	7042.00	6546.75	-6540.09	404.41	40.4422363	-104.7411940	0.00
13304.00	90.00	180.82	7042.00	6646.69	-6640.08	402.98	40.4419618	-104.7411992	0.00
13404.00	90.00	180.82	7042.00	6746.64	-6740.07	401.55	40.4416874	-104.7412043	0.00
13504.00	90.00	180.82	7042.00	6846.58	-6840.06	400.11	40.4414129	-104.7412095	0.00
13604.00	90.00	180.82	7042.00	6946.52	-6940.05	398.68	40.4411385	-104.7412147	0.00
13704.00	90.00	180.82	7042.00	7046.46	-7040.04	397.25	40.4408640	-104.7412198	0.00
13804.00	90.00	180.82	7042.00	7146.41	-7140.03	395.81	40.4405895	-104.7412250	0.00
13904.00	90.00	180.82	7042.00	7246.35	-7240.02	394.38	40.4403151	-104.7412301	0.00
14004.00	90.00	180.82	7042.00	7346.29	-7340.01	392.95	40.4400406	-104.7412353	0.00
14104.00	90.00	180.82	7042.00	7446.23	-7440.00	391.51	40.4397662	-104.7412404	0.00
14204.00	90.00	180.82	7042.00	7546.18	-7539.99	390.08	40.4394917	-104.7412456	0.00
14304.00	90.00	180.82	7042.00	7646.12	-7639.98	388.65	40.4392172	-104.7412507	0.00
14404.00	90.00	180.82	7042.00	7746.06	-7739.97	387.21	40.4389428	-104.7412559	0.00
14504.00	90.00	180.82	7042.00	7846.00	-7839.96	385.78	40.4386683	-104.7412611	0.00

CHALK_37N-2C-XR__REV-B.0__PWP.las

14604.00	90.00	180.82	7042.00	7945.95	-7939.95	384.34	40.4383939	-104.7412662	0.00
14704.00	90.00	180.82	7042.00	8045.89	-8039.94	382.91	40.4381194	-104.7412714	0.00
14804.00	90.00	180.82	7042.00	8145.83	-8139.93	381.48	40.4378449	-104.7412765	0.00
14904.00	90.00	180.82	7042.00	8245.77	-8239.92	380.04	40.4375705	-104.7412817	0.00
14955.52	90.00	180.82	7042.00	8297.26	-8291.43	379.31	40.4374291	-104.7412843	0.00
14980.32	90.00	181.32	7042.00	8322.05	-8316.23	378.84	40.4373610	-104.7412860	2.00
15004.00	90.00	181.32	7042.00	8345.71	-8339.90	378.30	40.4372960	-104.7412880	0.00
15104.00	90.00	181.32	7042.00	8445.61	-8439.88	376.00	40.4370216	-104.7412962	0.00
15204.00	90.00	181.32	7042.00	8545.52	-8539.85	373.70	40.4367472	-104.7413045	0.00
15304.00	90.00	181.32	7042.00	8645.43	-8639.82	371.40	40.4364728	-104.7413128	0.00
15404.00	90.00	181.32	7042.00	8745.34	-8739.80	369.10	40.4361984	-104.7413210	0.00
15504.00	90.00	181.32	7042.00	8845.25	-8839.77	366.80	40.4359240	-104.7413293	0.00
15604.00	90.00	181.32	7042.00	8945.16	-8939.74	364.50	40.4356495	-104.7413376	0.00
15704.00	90.00	181.32	7042.00	9045.07	-9039.72	362.20	40.4353751	-104.7413458	0.00
15804.00	90.00	181.32	7042.00	9144.98	-9139.69	359.90	40.4351007	-104.7413541	0.00
15904.00	90.00	181.32	7042.00	9244.89	-9239.67	357.60	40.4348263	-104.7413623	0.00
16004.00	90.00	181.32	7042.00	9344.80	-9339.64	355.30	40.4345519	-104.7413706	0.00
16104.00	90.00	181.32	7042.00	9444.71	-9439.61	353.01	40.4342775	-104.7413789	0.00
16204.00	90.00	181.32	7042.00	9544.62	-9539.59	350.71	40.4340030	-104.7413871	0.00
16304.00	90.00	181.32	7042.00	9644.53	-9639.56	348.41	40.4337286	-104.7413954	0.00
16404.00	90.00	181.32	7042.00	9744.44	-9739.53	346.11	40.4334542	-104.7414037	0.00
16504.00	90.00	181.32	7042.00	9844.35	-9839.51	343.81	40.4331798	-104.7414119	0.00
16604.00	90.00	181.32	7042.00	9944.26	-9939.48	341.51	40.4329054	-104.7414202	0.00
16704.00	90.00	181.32	7042.00	10044.17	-10039.45	339.21	40.4326310	-104.7414285	0.00
16804.00	90.00	181.32	7042.00	10144.08	-10139.43	336.91	40.4323565	-104.7414367	0.00
16904.00	90.00	181.32	7042.00	10243.99	-10239.40	334.61	40.4320821	-104.7414450	0.00
17004.00	90.00	181.32	7042.00	10343.90	-10339.37	332.31	40.4318077	-104.7414533	0.00
17104.00	90.00	181.32	7042.00	10443.80	-10439.35	330.01	40.4315333	-104.7414615	0.00
17204.00	90.00	181.32	7042.00	10543.71	-10539.32	327.71	40.4312589	-104.7414698	0.00
17304.00	90.00	181.32	7042.00	10643.62	-10639.30	325.41	40.4309845	-104.7414781	0.00
17404.00	90.00	181.32	7042.00	10743.53	-10739.27	323.11	40.4307100	-104.7414863	0.00
17504.00	90.00	181.32	7042.00	10843.44	-10839.24	320.81	40.4304356	-104.7414946	0.00
17604.00	90.00	181.32	7042.00	10943.35	-10939.22	318.51	40.4301612	-104.7415028	0.00
17704.00	90.00	181.32	7042.00	11043.26	-11039.19	316.21	40.4298868	-104.7415111	0.00

CHALK_37N-2C-XR__REV-B.0__PWP.las

17804.00	90.00	181.32	7042.00	11143.17	-11139.16	313.92	40.4296124	-104.7415194	0.00
17904.00	90.00	181.32	7042.00	11243.08	-11239.14	311.62	40.4293380	-104.7415276	0.00
18004.00	90.00	181.32	7042.00	11342.99	-11339.11	309.32	40.4290635	-104.7415359	0.00
18104.00	90.00	181.32	7042.00	11442.90	-11439.08	307.02	40.4287891	-104.7415442	0.00
18204.00	90.00	181.32	7042.00	11542.81	-11539.06	304.72	40.4285147	-104.7415524	0.00
18304.00	90.00	181.32	7042.00	11642.72	-11639.03	302.42	40.4282403	-104.7415607	0.00
18404.00	90.00	181.32	7042.00	11742.63	-11739.00	300.12	40.4279659	-104.7415690	0.00
18504.00	90.00	181.32	7042.00	11842.54	-11838.98	297.82	40.4276915	-104.7415772	0.00
18604.00	90.00	181.32	7042.00	11942.45	-11938.95	295.52	40.4274170	-104.7415855	0.00
18704.00	90.00	181.32	7042.00	12042.36	-12038.93	293.22	40.4271426	-104.7415937	0.00
18804.00	90.00	181.32	7042.00	12142.27	-12138.90	290.92	40.4268682	-104.7416020	0.00
18904.00	90.00	181.32	7042.00	12242.18	-12238.87	288.62	40.4265938	-104.7416103	0.00
19004.00	90.00	181.32	7042.00	12342.09	-12338.85	286.32	40.4263194	-104.7416185	0.00
19104.00	90.00	181.32	7042.00	12441.99	-12438.82	284.02	40.4260450	-104.7416268	0.00
19204.00	90.00	181.32	7042.00	12541.90	-12538.79	281.72	40.4257705	-104.7416351	0.00
19304.00	90.00	181.32	7042.00	12641.81	-12638.77	279.42	40.4254961	-104.7416433	0.00
19404.00	90.00	181.32	7042.00	12741.72	-12738.74	277.13	40.4252217	-104.7416516	0.00
19504.00	90.00	181.32	7042.00	12841.63	-12838.71	274.83	40.4249473	-104.7416598	0.00
19604.00	90.00	181.32	7042.00	12941.54	-12938.69	272.53	40.4246729	-104.7416681	0.00
19704.00	90.00	181.32	7042.00	13041.45	-13038.66	270.23	40.4243985	-104.7416764	0.00
19804.00	90.00	181.32	7042.00	13141.36	-13138.63	267.93	40.4241240	-104.7416846	0.00
19904.00	90.00	181.32	7042.00	13241.27	-13238.61	265.63	40.4238496	-104.7416929	0.00
19977.84	90.00	181.32	7042.00	13315.05	-13312.43	263.93	40.4236470	-104.7416990	0.00
19998.02	90.00	180.91	7042.00	13335.21	-13332.60	263.54	40.4235916	-104.7417004	2.00
20004.00	90.00	180.91	7042.00	13341.18	-13338.58	263.44	40.4235752	-104.7417008	0.00
20078.04	90.00	180.91	7042.00	13415.18	-13412.62	262.26	40.4233720	-104.7417050	0.00



Planned Wellpath Report

CHALK 37N-2C-XR (REV-B.0) PWP

Page 1 of 11



REFERENCE WELLPATH IDENTIFICATION

Operator	SRC ENERGY	Slot	SLOT#31 CHALK 37N-2C-XR (2330'FNL & 2171'FEL, SEC.26)
Area	COLORADO	Well	CHALK 37N-2C-XR
Field	WELD COUNTY (NAD83,TRUE NORTH)	Wellbore	CHALK 37N-2C-XR PWB
Facility	SEC.26-T06N-R66W		

REPORT SETUP INFORMATION

Projection System	NAD83 / Lambert Colorado SP, Northern Zone (501), US feet	Software System	WellArchitect® 5.0
North Reference	True	User	Doddanna
Scale	0.999964	Report Generated	8/8/2018 at 9:48:11 AM
Convergence at slot	0.49° East	Database/Source file	WellArchitectDB2/CHALK_37N-2C-XR_REV-B.0_PWP.xml

WELLPATH LOCATION

	Local coordinates		Grid coordinates		Geographic coordinates	
	North[ft]	East[ft]	Easting[US ft]	Northing[US ft]	Latitude	Longitude
Slot Location	-617.51	-572.93	3210740.84	1411386.81	40°27'36.677"N	104°44'33.529"W
Facility Reference Pt			3211308.44	1412009.18	40°27'42.779"N	104°44'26.117"W
Field Reference Pt			3171284.48	1426358.81	40°30'07.643"N	104°53'02.634"W

WELLPATH DATUM

Calculation method	Minimum curvature	PROPETRO 12 (4') (RKB) to Facility Vertical Datum	4701.00ft
Horizontal Reference Pt	Slot	PROPETRO 12 (4') (RKB) to Mean Sea Level	4701.00ft
Vertical Reference Pt	PROPETRO 12 (4') (RKB)	PROPETRO 12 (4') (RKB) to Mud Line at Slot (SLOT#31 CHALK 37N-2C-XR (2330'FNL & 2171'FEL, SEC.26))	4701.00ft
MD Reference Pt	PROPETRO 12 (4') (RKB)	Section Origin	N 0.00, E 0.00 ft
Field Vertical Reference	Mean Sea Level	Section Azimuth	178.88°



Planned Wellpath Report

CHALK 37N-2C-XR (REV-B.0) PWP

Page 2 of 11



REFERENCE WELLPATH IDENTIFICATION			
Operator	SRC ENERGY	Slot	SLOT#31 CHALK 37N-2C-XR (2330'FNL & 2171'FEL, SEC.26)
Area	COLORADO	Well	CHALK 37N-2C-XR
Field	WELD COUNTY (NAD83,TRUE NORTH)	Wellbore	CHALK 37N-2C-XR PWB
Facility	SEC.26-T06N-R66W		

WELLPATH DATA (211 stations) † = interpolated/extrapolated station								
MD [ft]	Inclination [°]	Azimuth [°]	TVD [ft]	Vert Sect [ft]	North [ft]	East [ft]	DLS [°/100ft]	Comments
0.00†	0.000	105.500	0.00	0.00	0.00	0.00	0.00	
4.00	0.000	105.500	4.00	0.00	0.00	0.00	0.00	Tie On
104.00†	0.000	105.500	104.00	0.00	0.00	0.00	0.00	
204.00†	0.000	105.500	204.00	0.00	0.00	0.00	0.00	
300.00	0.000	105.500	300.00	0.00	0.00	0.00	0.00	End of Tangent
304.00†	0.080	105.500	304.00	0.00	0.00	0.00	2.00	
404.00†	2.080	105.500	403.98	0.54	-0.50	1.82	2.00	
504.00†	4.080	105.500	503.83	2.08	-1.94	7.00	2.00	
522.02	4.440	105.500	521.80	2.46	-2.30	8.29	2.00	End of Build
604.00†	4.440	105.500	603.53	4.28	-3.99	14.40	0.00	
704.00†	4.440	105.500	703.23	6.49	-6.06	21.86	0.00	
804.00†	4.440	105.500	802.93	8.70	-8.13	29.32	0.00	
904.00†	4.440	105.500	902.63	10.92	-10.20	36.78	0.00	
1004.00†	4.440	105.500	1002.33	13.13	-12.27	44.25	0.00	
1104.00†	4.440	105.500	1102.03	15.35	-14.34	51.71	0.00	
1204.00†	4.440	105.500	1201.73	17.56	-16.41	59.17	0.00	
1304.00†	4.440	105.500	1301.43	19.78	-18.48	66.63	0.00	
1404.00†	4.440	105.500	1401.13	21.99	-20.55	74.09	0.00	
1504.00†	4.440	105.500	1500.83	24.21	-22.62	81.55	0.00	
1604.00†	4.440	105.500	1600.53	26.42	-24.69	89.01	0.00	
1704.00†	4.440	105.500	1700.23	28.64	-26.75	96.47	0.00	
1804.00†	4.440	105.500	1799.93	30.85	-28.82	103.93	0.00	
1904.00†	4.440	105.500	1899.63	33.06	-30.89	111.39	0.00	
2004.00†	4.440	105.500	1999.33	35.28	-32.96	118.85	0.00	
2104.00†	4.440	105.500	2099.03	37.49	-35.03	126.31	0.00	
2204.00†	4.440	105.500	2198.73	39.71	-37.10	133.77	0.00	
2304.00†	4.440	105.500	2298.43	41.92	-39.17	141.23	0.00	
2404.00†	4.440	105.500	2398.13	44.14	-41.24	148.70	0.00	
2504.00†	4.440	105.500	2497.83	46.35	-43.31	156.16	0.00	
2604.00†	4.440	105.500	2597.53	48.57	-45.38	163.62	0.00	



Planned Wellpath Report

CHALK 37N-2C-XR (REV-B.0) PWP

Page 3 of 11



REFERENCE WELLPATH IDENTIFICATION			
Operator	SRC ENERGY	Slot	SLOT#31 CHALK 37N-2C-XR (2330'FNL & 2171'FEL, SEC.26)
Area	COLORADO	Well	CHALK 37N-2C-XR
Field	WELD COUNTY (NAD83,TRUE NORTH)	Wellbore	CHALK 37N-2C-XR PWB
Facility	SEC.26-T06N-R66W		

WELLPATH DATA (211 stations) † = interpolated/extrapolated station								
MD [ft]	Inclination [°]	Azimuth [°]	TVD [ft]	Vert Sect [ft]	North [ft]	East [ft]	DLS [°/100ft]	Comments
2704.00†	4.440	105.500	2697.23	50.78	-47.45	171.08	0.00	
2804.00†	4.440	105.500	2796.93	53.00	-49.51	178.54	0.00	
2904.00†	4.440	105.500	2896.63	55.21	-51.58	186.00	0.00	
3004.00†	4.440	105.500	2996.33	57.42	-53.65	193.46	0.00	
3104.00†	4.440	105.500	3096.03	59.64	-55.72	200.92	0.00	
3204.00†	4.440	105.500	3195.73	61.85	-57.79	208.38	0.00	
3304.00†	4.440	105.500	3295.43	64.07	-59.86	215.84	0.00	
3404.00†	4.440	105.500	3395.13	66.28	-61.93	223.30	0.00	
3504.00†	4.440	105.500	3494.83	68.50	-64.00	230.76	0.00	
3604.00†	4.440	105.500	3594.53	70.71	-66.07	238.22	0.00	
3704.00†	4.440	105.500	3694.23	72.93	-68.14	245.69	0.00	
3804.00†	4.440	105.500	3793.93	75.14	-70.21	253.15	0.00	
3904.00†	4.440	105.500	3893.63	77.36	-72.27	260.61	0.00	
4004.00†	4.440	105.500	3993.33	79.57	-74.34	268.07	0.00	
4104.00†	4.440	105.500	4093.03	81.78	-76.41	275.53	0.00	
4204.00†	4.440	105.500	4192.73	84.00	-78.48	282.99	0.00	
4304.00†	4.440	105.500	4292.43	86.21	-80.55	290.45	0.00	
4404.00†	4.440	105.500	4392.13	88.43	-82.62	297.91	0.00	
4504.00†	4.440	105.500	4491.83	90.64	-84.69	305.37	0.00	
4604.00†	4.440	105.500	4591.52	92.86	-86.76	312.83	0.00	
4704.00†	4.440	105.500	4691.22	95.07	-88.83	320.29	0.00	
4804.00†	4.440	105.500	4790.92	97.29	-90.90	327.75	0.00	
4904.00†	4.440	105.500	4890.62	99.50	-92.97	335.21	0.00	
5004.00†	4.440	105.500	4990.32	101.72	-95.03	342.67	0.00	
5104.00†	4.440	105.500	5090.02	103.93	-97.10	350.14	0.00	
5204.00†	4.440	105.500	5189.72	106.15	-99.17	357.60	0.00	
5304.00†	4.440	105.500	5289.42	108.36	-101.24	365.06	0.00	
5404.00†	4.440	105.500	5389.12	110.57	-103.31	372.52	0.00	
5504.00†	4.440	105.500	5488.82	112.79	-105.38	379.98	0.00	
5604.00†	4.440	105.500	5588.52	115.00	-107.45	387.44	0.00	



Planned Wellpath Report

CHALK 37N-2C-XR (REV-B.0) PWP

Page 4 of 11



REFERENCE WELLPATH IDENTIFICATION			
Operator	SRC ENERGY	Slot	SLOT#31 CHALK 37N-2C-XR (2330'FNL & 2171'FEL, SEC.26)
Area	COLORADO	Well	CHALK 37N-2C-XR
Field	WELD COUNTY (NAD83,TRUE NORTH)	Wellbore	CHALK 37N-2C-XR PWB
Facility	SEC.26-T06N-R66W		

WELLPATH DATA (211 stations) † = interpolated/extrapolated station								
MD [ft]	Inclination [°]	Azimuth [°]	TVD [ft]	Vert Sect [ft]	North [ft]	East [ft]	DLS [°/100ft]	Comments
5704.00†	4.440	105.500	5688.22	117.22	-109.52	394.90	0.00	
5804.00†	4.440	105.500	5787.92	119.43	-111.59	402.36	0.00	
5904.00†	4.440	105.500	5887.62	121.65	-113.66	409.82	0.00	
6004.00†	4.440	105.500	5987.32	123.86	-115.73	417.28	0.00	
6104.00†	4.440	105.500	6087.02	126.08	-117.80	424.74	0.00	
6204.00†	4.440	105.500	6186.72	128.29	-119.86	432.20	0.00	
6304.00†	4.440	105.500	6286.42	130.51	-121.93	439.66	0.00	
6404.00†	4.440	105.500	6386.12	132.72	-124.00	447.13	0.00	
6437.60	4.440	105.500	6419.62	133.46	-124.70	449.63	0.00	End of Tangent
6504.00†	8.293	149.798	6485.63	138.39	-129.53	454.52	9.00	
6604.00†	16.649	166.272	6583.22	158.71	-149.72	461.56	9.00	
6704.00†	25.441	171.736	6676.46	194.08	-184.96	468.06	9.00	
6804.00†	34.337	174.508	6763.08	243.61	-234.39	473.86	9.00	
6904.00†	43.272	176.245	6840.93	306.10	-296.79	478.82	9.00	
7004.00†	52.225	177.484	6908.10	380.00	-370.63	482.81	9.00	
7104.00†	61.189	178.453	6962.94	463.49	-454.08	485.73	9.00	
7204.00†	70.158	179.268	7004.09	554.51	-545.09	487.52	9.00	
7304.00†	79.131	179.995	7030.55	650.84	-641.42	488.12	9.00	
7404.00†	88.105	180.679	7041.65	750.08	-740.69	487.53	9.00	
7425.11	90.000	180.821	7042.00 ¹	771.18	-761.80	487.26	9.00	End of 3D Arc
7504.00†	90.000	180.821	7042.00	850.02	-840.68	486.13	0.00	
7604.00†	90.000	180.821	7042.00	949.97	-940.67	484.69	0.00	
7704.00†	90.000	180.821	7042.00	1049.91	-1040.66	483.26	0.00	
7804.00†	90.000	180.821	7042.00	1149.85	-1140.65	481.83	0.00	
7904.00†	90.000	180.821	7042.00	1249.79	-1240.64	480.39	0.00	
8004.00†	90.000	180.821	7042.00	1349.74	-1340.63	478.96	0.00	
8104.00†	90.000	180.821	7042.00	1449.68	-1440.62	477.52	0.00	
8204.00†	90.000	180.821	7042.00	1549.62	-1540.61	476.09	0.00	
8304.00†	90.000	180.821	7042.00	1649.56	-1640.60	474.66	0.00	
8404.00†	90.000	180.821	7042.00	1749.51	-1740.59	473.22	0.00	



Planned Wellpath Report

CHALK 37N-2C-XR (REV-B.0) PWP

Page 5 of 11



REFERENCE WELLPATH IDENTIFICATION			
Operator	SRC ENERGY	Slot	SLOT#31 CHALK 37N-2C-XR (2330'FNL & 2171'FEL, SEC.26)
Area	COLORADO	Well	CHALK 37N-2C-XR
Field	WELD COUNTY (NAD83,TRUE NORTH)	Wellbore	CHALK 37N-2C-XR PWB
Facility	SEC.26-T06N-R66W		

WELLPATH DATA (211 stations) † = interpolated/extrapolated station								
MD [ft]	Inclination [°]	Azimuth [°]	TVD [ft]	Vert Sect [ft]	North [ft]	East [ft]	DLS [°/100ft]	Comments
8504.00†	90.000	180.821	7042.00	1849.45	-1840.58	471.79	0.00	
8604.00†	90.000	180.821	7042.00	1949.39	-1940.57	470.36	0.00	
8704.00†	90.000	180.821	7042.00	2049.33	-2040.56	468.92	0.00	
8804.00†	90.000	180.821	7042.00	2149.28	-2140.55	467.49	0.00	
8904.00†	90.000	180.821	7042.00	2249.22	-2240.54	466.06	0.00	
9004.00†	90.000	180.821	7042.00	2349.16	-2340.53	464.62	0.00	
9104.00†	90.000	180.821	7042.00	2449.10	-2440.52	463.19	0.00	
9204.00†	90.000	180.821	7042.00	2549.05	-2540.50	461.76	0.00	
9304.00†	90.000	180.821	7042.00	2648.99	-2640.49	460.32	0.00	
9404.00†	90.000	180.821	7042.00	2748.93	-2740.48	458.89	0.00	
9504.00†	90.000	180.821	7042.00	2848.87	-2840.47	457.46	0.00	
9604.00†	90.000	180.821	7042.00	2948.82	-2940.46	456.02	0.00	
9704.00†	90.000	180.821	7042.00	3048.76	-3040.45	454.59	0.00	
9804.00†	90.000	180.821	7042.00	3148.70	-3140.44	453.15	0.00	
9904.00†	90.000	180.821	7042.00	3248.64	-3240.43	451.72	0.00	
10004.00†	90.000	180.821	7042.00	3348.59	-3340.42	450.29	0.00	
10104.00†	90.000	180.821	7042.00	3448.53	-3440.41	448.85	0.00	
10204.00†	90.000	180.821	7042.00	3548.47	-3540.40	447.42	0.00	
10304.00†	90.000	180.821	7042.00	3648.42	-3640.39	445.99	0.00	
10404.00†	90.000	180.821	7042.00	3748.36	-3740.38	444.55	0.00	
10504.00†	90.000	180.821	7042.00	3848.30	-3840.37	443.12	0.00	
10604.00†	90.000	180.821	7042.00	3948.24	-3940.36	441.69	0.00	
10704.00†	90.000	180.821	7042.00	4048.19	-4040.35	440.25	0.00	
10804.00†	90.000	180.821	7042.00	4148.13	-4140.34	438.82	0.00	
10904.00†	90.000	180.821	7042.00	4248.07	-4240.33	437.39	0.00	
11004.00†	90.000	180.821	7042.00	4348.01	-4340.32	435.95	0.00	
11104.00†	90.000	180.821	7042.00	4447.96	-4440.31	434.52	0.00	
11204.00†	90.000	180.821	7042.00	4547.90	-4540.30	433.09	0.00	
11304.00†	90.000	180.821	7042.00	4647.84	-4640.29	431.65	0.00	
11404.00†	90.000	180.821	7042.00	4747.78	-4740.28	430.22	0.00	



Planned Wellpath Report

CHALK 37N-2C-XR (REV-B.0) PWP

Page 6 of 11



REFERENCE WELLPATH IDENTIFICATION			
Operator	SRC ENERGY	Slot	SLOT#31 CHALK 37N-2C-XR (2330'FNL & 2171'FEL, SEC.26)
Area	COLORADO	Well	CHALK 37N-2C-XR
Field	WELD COUNTY (NAD83,TRUE NORTH)	Wellbore	CHALK 37N-2C-XR PWB
Facility	SEC.26-T06N-R66W		

WELLPATH DATA (211 stations) † = interpolated/extrapolated station								
MD [ft]	Inclination [°]	Azimuth [°]	TVD [ft]	Vert Sect [ft]	North [ft]	East [ft]	DLS [°/100ft]	Comments
11504.00†	90.000	180.821	7042.00	4847.73	-4840.27	428.78	0.00	
11604.00†	90.000	180.821	7042.00	4947.67	-4940.26	427.35	0.00	
11704.00†	90.000	180.821	7042.00	5047.61	-5040.25	425.92	0.00	
11804.00†	90.000	180.821	7042.00	5147.55	-5140.24	424.48	0.00	
11904.00†	90.000	180.821	7042.00	5247.50	-5240.23	423.05	0.00	
12004.00†	90.000	180.821	7042.00	5347.44	-5340.22	421.62	0.00	
12104.00†	90.000	180.821	7042.00	5447.38	-5440.21	420.18	0.00	
12204.00†	90.000	180.821	7042.00	5547.32	-5540.20	418.75	0.00	
12304.00†	90.000	180.821	7042.00	5647.27	-5640.19	417.32	0.00	
12404.00†	90.000	180.821	7042.00	5747.21	-5740.18	415.88	0.00	
12504.00†	90.000	180.821	7042.00	5847.15	-5840.17	414.45	0.00	
12604.00†	90.000	180.821	7042.00	5947.09	-5940.16	413.02	0.00	
12704.00†	90.000	180.821	7042.00	6047.04	-6040.15	411.58	0.00	
12804.00†	90.000	180.821	7042.00	6146.98	-6140.14	410.15	0.00	
12904.00†	90.000	180.821	7042.00	6246.92	-6240.12	408.72	0.00	
13004.00†	90.000	180.821	7042.00	6346.87	-6340.11	407.28	0.00	
13104.00†	90.000	180.821	7042.00	6446.81	-6440.10	405.85	0.00	
13204.00†	90.000	180.821	7042.00	6546.75	-6540.09	404.41	0.00	
13304.00†	90.000	180.821	7042.00	6646.69	-6640.08	402.98	0.00	
13404.00†	90.000	180.821	7042.00	6746.64	-6740.07	401.55	0.00	
13504.00†	90.000	180.821	7042.00	6846.58	-6840.06	400.11	0.00	
13604.00†	90.000	180.821	7042.00	6946.52	-6940.05	398.68	0.00	
13704.00†	90.000	180.821	7042.00	7046.46	-7040.04	397.25	0.00	
13804.00†	90.000	180.821	7042.00	7146.41	-7140.03	395.81	0.00	
13904.00†	90.000	180.821	7042.00	7246.35	-7240.02	394.38	0.00	
14004.00†	90.000	180.821	7042.00	7346.29	-7340.01	392.95	0.00	
14104.00†	90.000	180.821	7042.00	7446.23	-7440.00	391.51	0.00	
14204.00†	90.000	180.821	7042.00	7546.18	-7539.99	390.08	0.00	
14304.00†	90.000	180.821	7042.00	7646.12	-7639.98	388.65	0.00	
14404.00†	90.000	180.821	7042.00	7746.06	-7739.97	387.21	0.00	



Planned Wellpath Report

CHALK 37N-2C-XR (REV-B.0) PWP

Page 7 of 11



REFERENCE WELLPATH IDENTIFICATION			
Operator	SRC ENERGY	Slot	SLOT#31 CHALK 37N-2C-XR (2330'FNL & 2171'FEL, SEC.26)
Area	COLORADO	Well	CHALK 37N-2C-XR
Field	WELD COUNTY (NAD83,TRUE NORTH)	Wellbore	CHALK 37N-2C-XR PWB
Facility	SEC.26-T06N-R66W		

WELLPATH DATA (211 stations) † = interpolated/extrapolated station								
MD [ft]	Inclination [°]	Azimuth [°]	TVD [ft]	Vert Sect [ft]	North [ft]	East [ft]	DLS [°/100ft]	Comments
14504.00†	90.000	180.821	7042.00	7846.00	-7839.96	385.78	0.00	
14604.00†	90.000	180.821	7042.00	7945.95	-7939.95	384.34	0.00	
14704.00†	90.000	180.821	7042.00	8045.89	-8039.94	382.91	0.00	
14804.00†	90.000	180.821	7042.00	8145.83	-8139.93	381.48	0.00	
14904.00†	90.000	180.821	7042.00	8245.77	-8239.92	380.04	0.00	
14955.52	90.000	180.821	7042.00	8297.26	-8291.43	379.31	0.00	End of Tangent
14980.32	90.000	181.318	7042.00 ²	8322.05	-8316.23	378.84	2.00	End of 3D Arc
15004.00†	90.000	181.318	7042.00	8345.71	-8339.90	378.30	0.00	
15104.00†	90.000	181.318	7042.00	8445.61	-8439.88	376.00	0.00	
15204.00†	90.000	181.318	7042.00	8545.52	-8539.85	373.70	0.00	
15304.00†	90.000	181.318	7042.00	8645.43	-8639.82	371.40	0.00	
15404.00†	90.000	181.318	7042.00	8745.34	-8739.80	369.10	0.00	
15504.00†	90.000	181.318	7042.00	8845.25	-8839.77	366.80	0.00	
15604.00†	90.000	181.318	7042.00	8945.16	-8939.74	364.50	0.00	
15704.00†	90.000	181.318	7042.00	9045.07	-9039.72	362.20	0.00	
15804.00†	90.000	181.318	7042.00	9144.98	-9139.69	359.90	0.00	
15904.00†	90.000	181.318	7042.00	9244.89	-9239.67	357.60	0.00	
16004.00†	90.000	181.318	7042.00	9344.80	-9339.64	355.30	0.00	
16104.00†	90.000	181.318	7042.00	9444.71	-9439.61	353.01	0.00	
16204.00†	90.000	181.318	7042.00	9544.62	-9539.59	350.71	0.00	
16304.00†	90.000	181.318	7042.00	9644.53	-9639.56	348.41	0.00	
16404.00†	90.000	181.318	7042.00	9744.44	-9739.53	346.11	0.00	
16504.00†	90.000	181.318	7042.00	9844.35	-9839.51	343.81	0.00	
16604.00†	90.000	181.318	7042.00	9944.26	-9939.48	341.51	0.00	
16704.00†	90.000	181.318	7042.00	10044.17	-10039.45	339.21	0.00	
16804.00†	90.000	181.318	7042.00	10144.08	-10139.43	336.91	0.00	
16904.00†	90.000	181.318	7042.00	10243.99	-10239.40	334.61	0.00	
17004.00†	90.000	181.318	7042.00	10343.90	-10339.37	332.31	0.00	
17104.00†	90.000	181.318	7042.00	10443.80	-10439.35	330.01	0.00	
17204.00†	90.000	181.318	7042.00	10543.71	-10539.32	327.71	0.00	



Planned Wellpath Report

CHALK 37N-2C-XR (REV-B.0) PWP

Page 8 of 11



REFERENCE WELLPATH IDENTIFICATION			
Operator	SRC ENERGY	Slot	SLOT#31 CHALK 37N-2C-XR (2330'FNL & 2171'FEL, SEC.26)
Area	COLORADO	Well	CHALK 37N-2C-XR
Field	WELD COUNTY (NAD83,TRUE NORTH)	Wellbore	CHALK 37N-2C-XR PWB
Facility	SEC.26-T06N-R66W		

WELLPATH DATA (211 stations) † = interpolated/extrapolated station								
MD [ft]	Inclination [°]	Azimuth [°]	TVD [ft]	Vert Sect [ft]	North [ft]	East [ft]	DLS [°/100ft]	Comments
17304.00†	90.000	181.318	7042.00	10643.62	-10639.30	325.41	0.00	
17404.00†	90.000	181.318	7042.00	10743.53	-10739.27	323.11	0.00	
17504.00†	90.000	181.318	7042.00	10843.44	-10839.24	320.81	0.00	
17604.00†	90.000	181.318	7042.00	10943.35	-10939.22	318.51	0.00	
17704.00†	90.000	181.318	7042.00	11043.26	-11039.19	316.21	0.00	
17804.00†	90.000	181.318	7042.00	11143.17	-11139.16	313.92	0.00	
17904.00†	90.000	181.318	7042.00	11243.08	-11239.14	311.62	0.00	
18004.00†	90.000	181.318	7042.00	11342.99	-11339.11	309.32	0.00	
18104.00†	90.000	181.318	7042.00	11442.90	-11439.08	307.02	0.00	
18204.00†	90.000	181.318	7042.00	11542.81	-11539.06	304.72	0.00	
18304.00†	90.000	181.318	7042.00	11642.72	-11639.03	302.42	0.00	
18404.00†	90.000	181.318	7042.00	11742.63	-11739.00	300.12	0.00	
18504.00†	90.000	181.318	7042.00	11842.54	-11838.98	297.82	0.00	
18604.00†	90.000	181.318	7042.00	11942.45	-11938.95	295.52	0.00	
18704.00†	90.000	181.318	7042.00	12042.36	-12038.93	293.22	0.00	
18804.00†	90.000	181.318	7042.00	12142.27	-12138.90	290.92	0.00	
18904.00†	90.000	181.318	7042.00	12242.18	-12238.87	288.62	0.00	
19004.00†	90.000	181.318	7042.00	12342.09	-12338.85	286.32	0.00	
19104.00†	90.000	181.318	7042.00	12441.99	-12438.82	284.02	0.00	
19204.00†	90.000	181.318	7042.00	12541.90	-12538.79	281.72	0.00	
19304.00†	90.000	181.318	7042.00	12641.81	-12638.77	279.42	0.00	
19404.00†	90.000	181.318	7042.00	12741.72	-12738.74	277.13	0.00	
19504.00†	90.000	181.318	7042.00	12841.63	-12838.71	274.83	0.00	
19604.00†	90.000	181.318	7042.00	12941.54	-12938.69	272.53	0.00	
19704.00†	90.000	181.318	7042.00	13041.45	-13038.66	270.23	0.00	
19804.00†	90.000	181.318	7042.00	13141.36	-13138.63	267.93	0.00	
19904.00†	90.000	181.318	7042.00	13241.27	-13238.61	265.63	0.00	
19977.84	90.000	181.318	7042.00 ³	13315.05	-13312.43	263.93	0.00	End of Tangent
19998.02	90.000	180.914	7042.00	13335.21	-13332.60	263.54	2.00	End of 3D Arc
20004.00†	90.000	180.914	7042.00	13341.18	-13338.58	263.44	0.00	



Planned Wellpath Report

CHALK 37N-2C-XR (REV-B.0) PWP

Page 9 of 11



REFERENCE WELLPATH IDENTIFICATION			
Operator	SRC ENERGY	Slot	SLOT#31 CHALK 37N-2C-XR (2330'FNL & 2171'FEL, SEC.26)
Area	COLORADO	Well	CHALK 37N-2C-XR
Field	WELD COUNTY (NAD83,TRUE NORTH)	Wellbore	CHALK 37N-2C-XR PWB
Facility	SEC.26-T06N-R66W		

WELLPATH DATA (211 stations)								
MD [ft]	Inclination [°]	Azimuth [°]	TVD [ft]	Vert Sect [ft]	North [ft]	East [ft]	DLS [°/100ft]	Comments
20078.04	90.000	180.914	7042.00 ⁴	13415.18	-13412.62	262.26	0.00	End of Tangent

HOLE & CASING SECTIONS - Ref Wellbore: CHALK 37N-2C-XR PWB Ref Wellpath: CHALK 37N-2C-XR (REV-B.0) PWP									
String/Diameter	Start MD [ft]	End MD [ft]	Interval [ft]	Start TVD [ft]	End TVD [ft]	Start N/S [ft]	Start E/W [ft]	End N/S [ft]	End E/W [ft]
13.5in Open Hole	4.00	1750.00	1746.00	4.00	1746.09	0.00	0.00	-27.71	99.90
9.625in Casing Surface	4.00	1750.00	1746.00	4.00	1746.09	0.00	0.00	-27.71	99.90
8.5in Open Hole	1750.00	20078.04	18328.04	1746.09	7042.00	-27.71	99.90	-13412.62	262.26



Planned Wellpath Report

CHALK 37N-2C-XR (REV-B.0) PWP

Page 10 of 11



REFERENCE WELLPATH IDENTIFICATION			
Operator	SRC ENERGY	Slot	SLOT#31 CHALK 37N-2C-XR (2330'FNL & 2171'FEL, SEC.26)
Area	COLORADO	Well	CHALK 37N-2C-XR
Field	WELD COUNTY (NAD83,TRUE NORTH)	Wellbore	CHALK 37N-2C-XR PWB
Facility	SEC.26-T06N-R66W		

TARGETS									
Name	MD [ft]	TVD [ft]	North [ft]	East [ft]	Grid East [US ft]	Grid North [US ft]	Latitude	Longitude	Shape
EAST HALF OF SEC.02-T05N-R66W		-22.00	617.52	572.92	3211308.44	1412009.18	40°27'42.779"N	104°44'26.117"W	polygon
EAST HALF OF SEC.26-T06N-R66W		-22.00	617.52	572.92	3211308.44	1412009.18	40°27'42.779"N	104°44'26.117"W	polygon
EAST HALF OF SEC.35-T06N-R66W		-22.00	617.52	572.92	3211308.44	1412009.18	40°27'42.779"N	104°44'26.117"W	polygon
SEC.25-T06N-R66W		-22.00	617.52	572.92	3211308.44	1412009.18	40°27'42.779"N	104°44'26.117"W	polygon
SEC.30-T06N-R65W		-22.00	617.52	572.92	3211308.44	1412009.18	40°27'42.779"N	104°44'26.117"W	polygon
SOUTH HALF OF SEC.19-T06N-R65W		-22.00	617.52	572.92	3211308.44	1412009.18	40°27'42.779"N	104°44'26.117"W	polygon
SOUTH HALF OF SEC.24-T06N-R66W		-22.00	617.52	572.92	3211308.44	1412009.18	40°27'42.779"N	104°44'26.117"W	polygon
CHALK 37N-2C-XR BHL ON PLAT (460'FSL & 1817'FEL, SEC.02)		7042.00	-13312.43	263.93	3211118.44	1398077.63	40°25'25.129"N	104°44'30.116"W	circle
4) CHALK 37N-2C-XR BHL ON PLAT REV-2 (361'FSL & 1817'FEL, SEC.02)	20078.04	7042.00	-13412.62	262.26	3211117.63	1397977.44	40°25'24.139"N	104°44'30.138"W	circle
3) CHALK 37N-2C-XR BPZ ON PLAT (460'FSL & 1817'FEL, SEC.02)	19977.84	7042.00	-13312.43	263.93	3211118.44	1398077.63	40°25'25.129"N	104°44'30.116"W	circle
1) CHALK 37N-2C-XR TOP OF PROD ON PLAT (2167'FSL & 1693'FEL, SEC.26)	7425.11	7042.00	-761.80	487.26	3211234.56	1410629.23	40°27'29.149"N	104°44'27.226"W	circle
2) CHALK 37N-2C-XR WAYPOINT	14980.32	7042.00	-8316.23	378.84	3211190.68	1403074.44	40°26'14.500"N	104°44'28.630"W	point



Planned Wellpath Report

CHALK 37N-2C-XR (REV-B.0) PWP

Page 11 of 11



REFERENCE WELLPATH IDENTIFICATION			
Operator	SRC ENERGY	Slot	SLOT#31 CHALK 37N-2C-XR (2330'FNL & 2171'FEL, SEC.26)
Area	COLORADO	Well	CHALK 37N-2C-XR
Field	WELD COUNTY (NAD83,TRUE NORTH)	Wellbore	CHALK 37N-2C-XR PWB
Facility	SEC.26-T06N-R66W		

SURVEY PROGRAM - Ref Wellbore: CHALK 37N-2C-XR PWB Ref Wellpath: CHALK 37N-2C-XR (REV-B.0) PWP				
Start MD [ft]	End MD [ft]	Positional Uncertainty Model	Log Name/Comment	Wellbore
4.00	1750.00	BHI NaviTrak (Rotating+Axial Corr)		CHALK 37N-2C-XR PWB
1750.00	20078.04	BHI AutoTrak Curve (MagCAD+IFR1, Short spacing)		CHALK 37N-2C-XR PWB