

LUSSING TRUST 4-64 19-20 3D3H WELL LOCATION EXHIBIT

3/4" ALUM. CAP
LS 176X9, NO DATE
FIELD DATE: 10/12/11

3/4" ALUM. CAP
LS 7361, 1985

S88°53'59"E 2648.20'

SURFACE LOCATION:
GROUND ELEVATION= 5714'
NAD83
LATITUDE:39.686912° N
LONGITUDE:104.601123° W

2 1/2" ALUM. CAP
ILLEGIBLE

NOTES:
BH LOCATION PROVIDED BY CLIENT.
LAND SURFACE USE- HAY MEADOW
SEE LOCATION DRAWING FOR ADDITIONAL
IMPROVEMENTS WITHIN 500'

PDOP= 1.4
GPS OPERATOR: RYAN DESMOND

LANDING POINT LOCATION:
NAD83
LATITUDE:39.686356° N
LONGITUDE:104.601239° W

LAST TAKE POINT:
NAD83
LATITUDE:39.685787° N
LONGITUDE:104.566838° W

BOTTOM HOLE LOCATION:
NAD83
LATITUDE:39.685778° N
LONGITUDE:104.566359° W

2 1/2" ALUM. CAP
PLS 28285, 2013

No. 1

19

S09°15'54"W
205.15'

LUSSING TRUST 4-64 19-20 3D3H

BHL: 1690' FSL
325' FEL } SEC. 20

S88°45'02"E 9686.76'

LP: 1690' FSL
613' FWL

No. 2

LTP: 1690' FSL
460' FEL } SEC. 20

3/4" ALUM. CAP
ILLEGIBLE
FIELD DATE:
10/1/11

N89°01'42"W 2806.54'

2 1/2" ALUM. CAP
PLS 28285, 2013

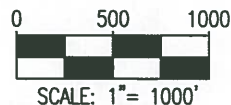
N88°50'50"W 2640.54'

2 1/2" ALUM. CAP
PLS 28285, 2011

LEGEND

- ⊕ = EXISTING MONUMENT
- = CALCULATED POSITION
- = PROPOSED WELL
- ◆ = EXISTING WELL
- ⬮ = BOTTOM HOLE
- ⬮ = LANDING POINT
- ⬮ = LAST TAKE POINT
- LTP = LAST TAKE POINT
- BHL = BOTTOM HOLE LOCATION
- LP = LANDING POINT

WELL LUSSING TRUST 4-64 19-20 3D3H TO BE LOCATED 1893' FSL & 645' FWL



NOTES:

- THIS FIELD SURVEY CONFORMS TO THE MINIMUM STANDARDS SET BY THE C.O.G.C.C., RULE NO. 215
- ALL DISTANCES AND BEARINGS SHOWN HEREON ARE GROUND VALUES AS GPS MEASURED IN THE FIELD, WITH TIES TO WELLS MEASURED PERPENDICULAR TO LINES SHOWN HEREON. THIS LOW DISTORTION PROJECTION (LDP) IS BASED ON THE NORTH AMERICAN DATUM OF 1983, U.S. SURVEY FOOT WITH A LATITUDE ORIGIN OF 39.695444°N, A CENTRAL MERIDIAN LONGITUDE OF 104.546235°W, AND A SCALE FACTOR ON THE CENTRAL MERIDIAN OF 1.000269 (EXACT). THE LDP BASIS OF BEARINGS IS GEODETIC NORTH.
- FIELD VERIFICATION OF MONUMENTS COMPLETED WITHIN 1 YEAR OF FIELD DATE, UNLESS OTHERWISE NOTED.

I, ROBERT J. GUFFEY, A LICENSED PROFESSIONAL LAND SURVEYOR IN THE STATE OF COLORADO, DO HEREBY STATE TO **CONOCO PHILLIPS** THAT THE WELL LOCATION EXHIBIT SHOWN HEREON WAS PREPARED BY ME OR UNDER MY DIRECT SUPERVISION AND THE DRAWING SHOWN HEREON ACCURATELY DEPICTS THE PROPOSED LOCATION OF THE WELL. THIS EXHIBIT MEETS THE REQUIREMENTS OF A GIS LAND POSITION AS DEFINED BY SECTION 38-51-102 (7.5) C.R.S. AND AS SUCH PER SECTION 38-51-109.3 C.R.S. CANNOT BE RELIED UPON TO DETERMINE OWNERSHIP.

ROBERT J. GUFFEY, PLS 20680
COLORADO LICENSED PROFESSIONAL LAND SURVEYOR
FOR AND ON BEHALF OF P.F.S., LLC
d.b.a. ASCENT GEOMATICS SOLUTIONS



SHEET 1 OF 2



7535 Hilltop Circle
Denver, CO 80221
(303) 928-7128
www.ascentgeomatics.com

FIELD DATE:

12-05-17

DRAWING DATE:

07-17-18

BY:

IIC

CHECKED:

MMP

WELL NAME:

LUSSING TRUST 4-64 19-20 3D3H

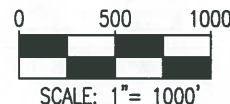
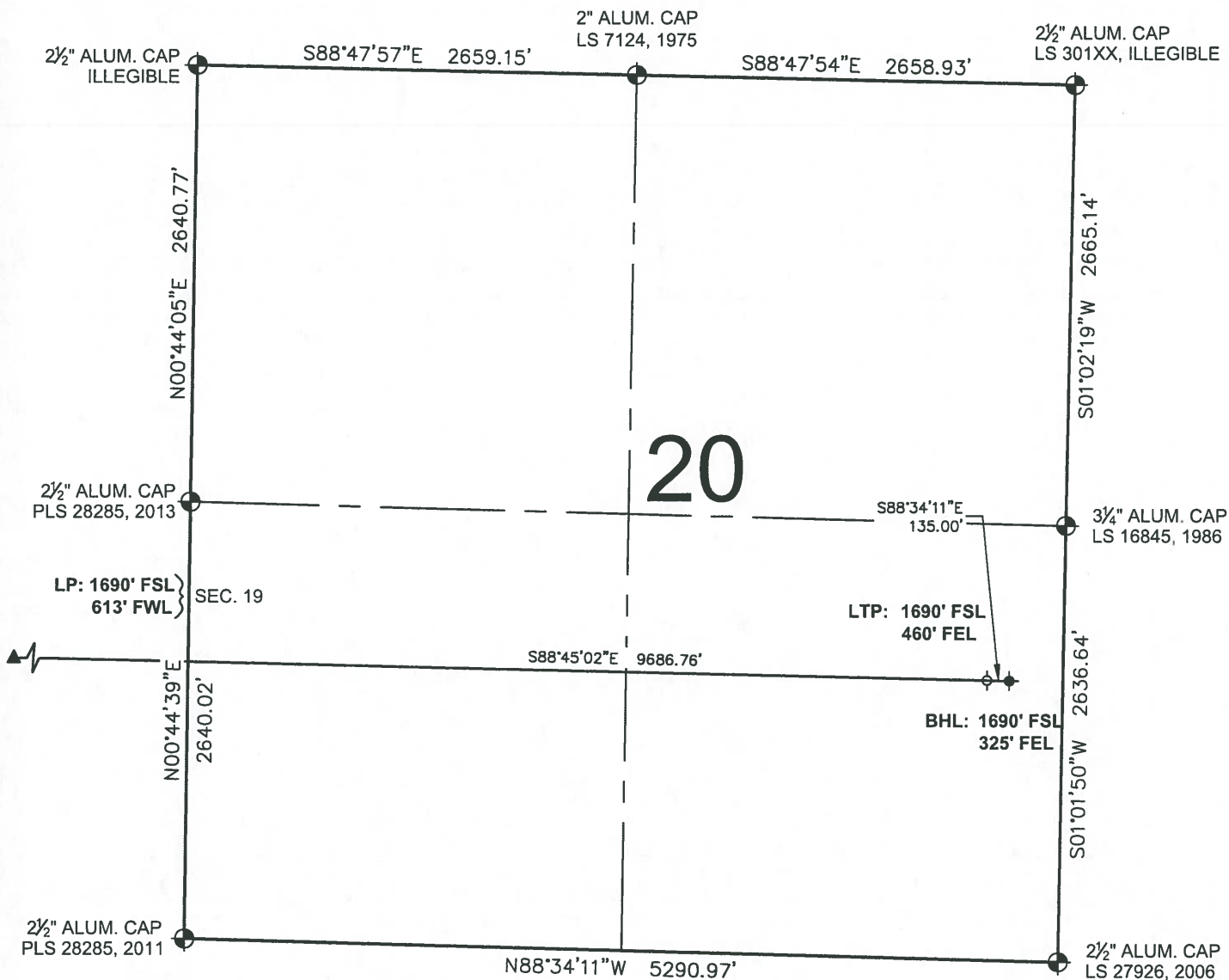
SURFACE LOCATION:

LOT 2 SW 1/4 SEC. 19, T4S, R64W, 6TH P.M.
ARAPAHOE COUNTY, COLORADO

PREPARED FOR:

ConocoPhillips

LUSSING TRUST 4-64 19-20 3D3H WELL LOCATION EXHIBIT



LEGEND

- ⊕ = EXISTING MONUMENT
- = CALCULATED POSITION
- = PROPOSED WELL
- ◆ = EXISTING WELL
- ⬮ = BOTTOM HOLE
- ▲ = LANDING POINT
- ⊙ = LAST TAKE POINT
- LTP = LAST TAKE POINT
- BHL = BOTTOM HOLE LOCATION
- LP = LANDING POINT

ROBERT J. GUFFEY, PLS 20680
COLORADO LICENSED PROFESSIONAL LAND SURVEYOR
FOR AND ON BEHALF OF P.F.S., LLC
d.b.a. ASCENT GEOMATICS SOLUTIONS



SHEET 2 OF 2



FIELD DATE:
12-05-17
DRAWING DATE:
07-17-18
BY:
IIC
CHECKED:
MMP

WELL NAME:
LUSSING TRUST 4-64 19-20 3D3H
SURFACE LOCATION:
LOT 2 SW 1/4 SEC. 19, T4S, R64W, 6TH P.M.
ARAPAHOE COUNTY, COLORADO

PREPARED FOR:

ConocoPhillips