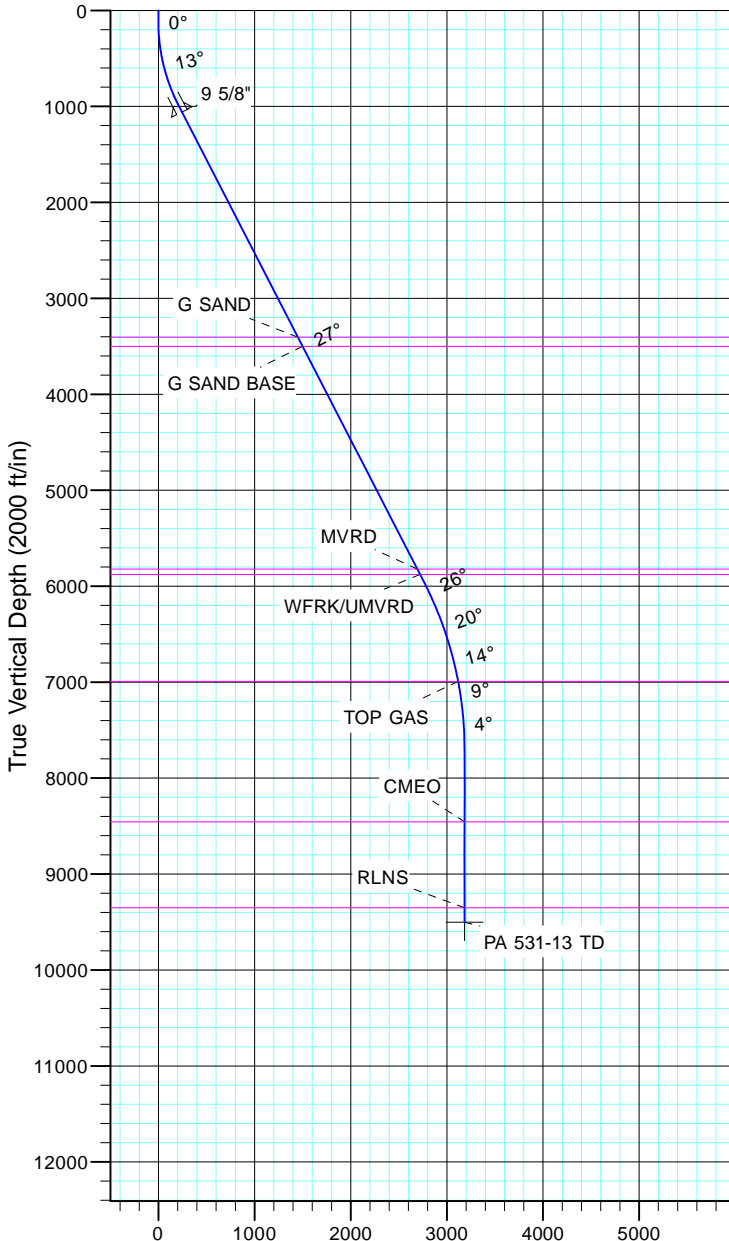


TEP Rocky Mountain LLC  
Project: Garfield County, CO NAD83  
Site: PA 44-13  
Well: PA 531-13  
Wellbore: OH  
Design: Plan #1



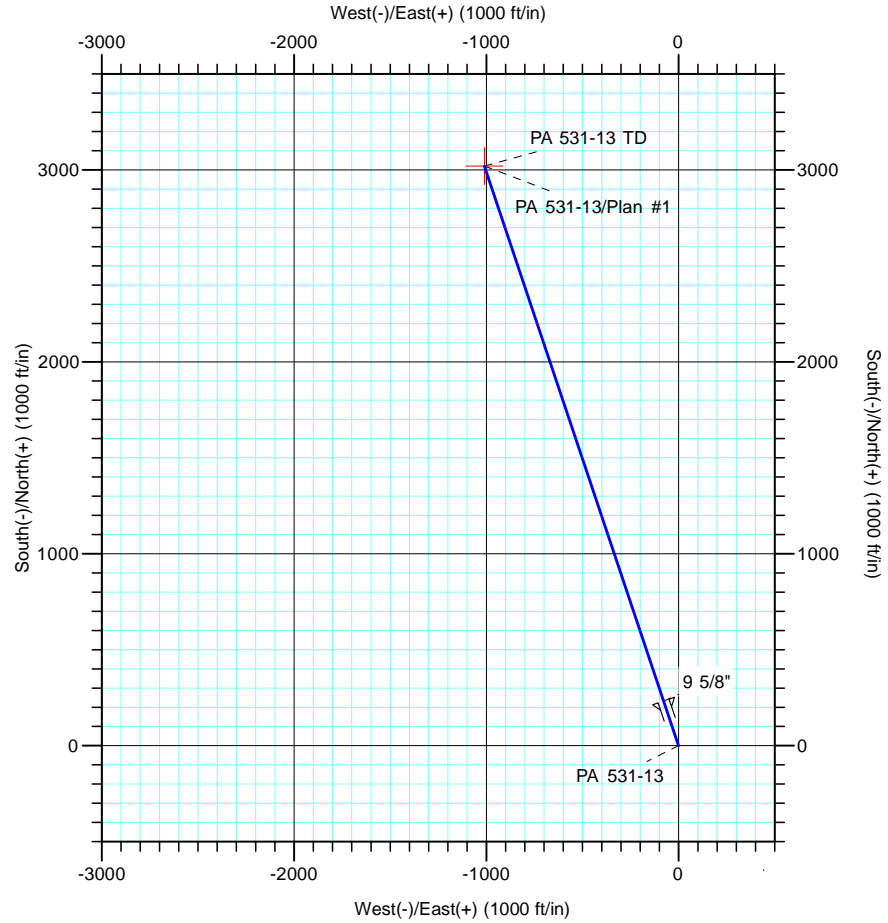
Azimuths to True North  
Magnetic North: 11.43°  
  
Magnetic Field  
Strength: 53064.4nT  
Dip Angle: 66.02°  
Date: 12/31/2004  
Model: IGRF2000



Vertical Section at 341.51° (2000 ft/in)

CASING DETAILS			
TVD	MD	Name	Size
1058.2	1100.0	9 5/8"	9.625

FORMATION TOP DETAILS		
TVDPath	MDPath	Formation
3407.0	3740.8	G SAND
3500.0	3845.3	G SAND BASE
5822.0	6456.0	MVRD
5878.0	6519.0	WFRK/UMVRD
6993.0	7707.0	TOP GAS
8457.0	9175.1	CMEO
9353.0	10071.1	RLNS



DESIGN TARGET DETAILS							
Name	TVD	+N/-S	+E/-W	Northing	Easting	Latitude	Longitude
PA 531-13 TD	9503.0	3020.3	-1009.7	1626860.00	2310305.30	39° 31' 44.465 N	107° 56' 43.610 W

SECTION DETAILS											
Sec	MD	Inc	Azi	TVD	+N/-S	+E/-W	Dleg	TFace	VSect	Target	
1	0.0	0.00	0.00	0.0	0.0	0.0	0.00	0.00	0.0		
2	120.0	0.00	0.00	120.0	0.0	0.0	0.00	0.00	0.0		
3	1026.6	27.20	341.51	992.9	200.3	-67.0	3.00	341.51	211.2		
4	6607.9	27.20	341.51	5957.1	2619.7	-875.8	0.00	2762.2	2762.2		
5	8421.1	0.00	0.00	7703.0	3020.3	-1009.7	1.50	180.00	3184.6		
6	10221.1	0.00	0.00	9503.0	3020.3	-1009.7	0.00	0.00	3184.6	PA 531-13 TD	