



# Kerr-McGee Oil & Gas Onshore LP

A subsidiary of Anadarko Petroleum Corporation

1099 18<sup>th</sup> Street  
Denver, CO 80202  
720-929-6000

August 13, 2018

Julie Murphy  
Director, Colorado Oil and Gas Conservation Commission  
Department of Natural Resources - The Chancery Building  
1120 Lincoln Street, Suite 801  
Denver, CO 80203

Re: **30 Day Certification Letter - 318A.e**  
BUDDY 7-1HZ (Doc No. 401679488)  
Township 1 North, Range 67 West  
Section 7: E2NE  
Unit Acreage: 480 Acres  
Proposed Spacing Unit:  
01N67W SEC 06: SESW, SWSE;  
01N67W SEC 07: E2W2, W2E2;  
01N67W SEC 18: NENW, NWNE  
Weld County, Colorado

Dear Director Murphy:

Kerr-McGee Oil and Gas Onshore LP ("KMG") hereby certifies that a thirty (30) day notice has been given by certified mail to all mineral owners in the proposed wellbore spacing unit. We have not received any objections to such well location, proposed spacing unit, or additional producing formation. KMG hereby respectfully requests approval of this boundary well.

If there are any questions or issues regarding this permit, please contact John Piekara at (720) 929-3094.

Sincerely,

**Kerr-McGee Oil & Gas Onshore LP**

A handwritten signature in black ink, appearing to read 'John Piekara', written over a horizontal line.

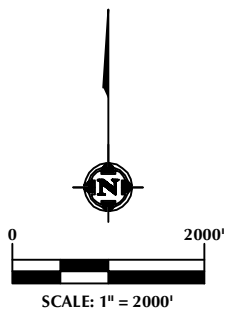
John Piekara  
Sr. Regulatory Analyst

Enclosure

DISTANCE FROM COMPLETED  
PORTION OF WELLBORE TO  
NEAREST UNIT BOUNDARY= 990'

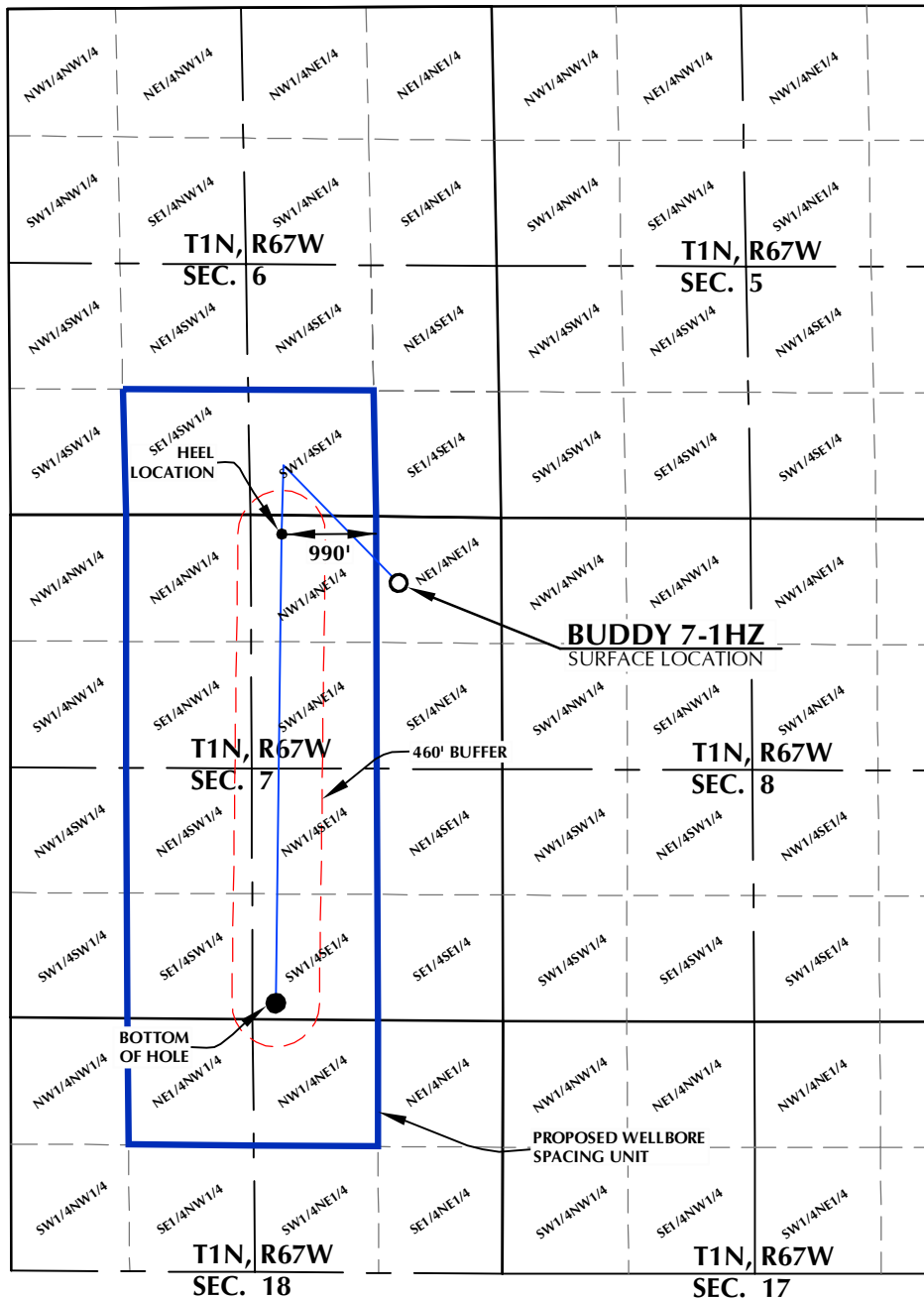
## BUDDY 7-1HZ WELLBORE SPACING UNIT

SURFACE LOCATION: NAD 83  
GROUND ELEVATION= 5072.8'  
LATITUDE= 40.071038°  
LONGITUDE= -104.927766°  
LATITUDE= 40°04'15.737"  
LONGITUDE= -104°55'39.956"  
HEEL LOCATION: NAD 83  
LATITUDE= 40.072467°  
LONGITUDE= -104.932145°  
LATITUDE= 40°04'20.883"  
LONGITUDE= -104°55'55.722"  
BOTTOM HOLE LOCATION: NAD 83  
LATITUDE= 40.058944°  
LONGITUDE= -104.932483°  
LATITUDE= 40°03'32.198"  
LONGITUDE= -104°55'56.939"



### NOTES:

1. DRAWING LATITUDE AND LONGITUDE COORDINATES ARE NAD 83 (2011)(EPOCH:2010).
2. ELEVATION BASED ON NAVD88 (GEOID12B).
3. BASIS OF BEARING DERIVED FROM COLORADO COORDINATE SYSTEM OF 1983 NORTH ZONE.
4. ALL MEASURED DISTANCES ARE GRID. COMBINED SCALE FACTOR: .99972179 CALCULATED FROM THE SW. CORNER OF SECTION 6, T1N, R67W.



### WELL PAD - BUDDY 17-7HZ

BUDDY 7-1HZ  
WELLBORE SPACING UNIT  
699' FNL & 1079' FEL NENE (SURFACE)  
200' FNL & 2306' FEL NWNE (HEEL)  
168' FSL & 2389' FEL SWSE (BOTTOM)  
LOCATED IN SECTION 7  
T1N, R67W, 6TH P.M.  
WELD COUNTY, COLORADO

**Kerr-McGee Oil &  
Gas Onshore L.P.**  
1099 18th Street  
Denver, Colorado 80202



### CONSULTING, LLC

SHERIDAN OFFICE  
1095 Saberton Avenue  
Sheridan, Wyoming 82801  
Phone 307-674-0609

LOVELAND OFFICE  
6706 North Franklin Avenue  
Loveland, Colorado 80538  
Phone 970-776-4331

DRAFTED BY:	LMO	CHECKED BY:	RKF
DATE DRAFTED:	6/5/18	DATE SURVEYED:	5/7/18
REVISED:		FILE NAME:	16-183