



PIONEER

Pioneer Energy Services

**RADIAL BOND LOG
WITH GAMMA RAY**

Comp.	OMIMEX PETROLEUM	Company	OMIMEX PETROLEUM
Well	DRACO 4-20-1-48	Well	DRACO 4-20-1-48
Field	WILDCAT	Field	WILDCAT
Co.	YUMA	County	YUMA
State	COLORADO	State	COLORADO
Location:	API #: 05-125-12128 613' FNL & 828' FWL NW/NW	Other Services	NONE
Permanent Datum	GL	Elevation	4213'
Log Measured From	KB	18.5' Above Perm. Datum	
Drilling Measured From	KELLY BUSHING	K.B.	4231.5'
		D.F.	4231.5'
		G.L.	4213'
Date of Service	8-AUG-2018		
Run Number	ONE		
Depth Driller or PBDT	6813'		
Depth Logger	3850'		
Bottom Log Interval	3842'		
Top Log Interval	SURFACE		
Open Hole Size	N/A		
Type Fluid	WATER		
Fluid Level	SURFACE		
Fluid Density	N/A		
Max. Recorded Temperature	N/A		
Max. Wellhead Pressure	ZERO		
Wellhead Connection	5 1/2" SWEDGE		
Estimated Cement Top	SEE LOG		
Unit Number	P-28		
Wireline Size	5/16"		
Location	CASPER, WY		
Recorded By	M. GARFIELD		
Witnessed By	PAUL DEKAYE		
Size	Wt/Ft	Top	Bottom
Tubing Record			
Surface Casing	8.625"	24#	SURFACE
Production Casing	5.5"	17#	SURFACE
Liner Record			TD

<<< Fold Here >>>

All interpretations are opinions based on inferences from electrical or other measurements and Pioneer Wireline Services, LLC cannot and does not guarantee the accuracy or correctness of any interpretation, and Pioneer Wireline Services, LLC will not be liable or responsible for any loss, costs, damages, or expenses incurred or sustained by anyone resulting from any interpretation made by any of our officers, agents or employees.

Comments

N/A DENOTES NOT AVAILABLE OR NON-APPLICABLE.
LOG CORRELATED TO SCHLUMBERGER
PLATFORM EXPRESS TRIPLE COMBO LINEAR LOG
PERFORMED 22-JULY-2018

THANK YOU FOR USING PIONEER ENERGY SERVICES!

Your Pioneer Energy Services Crew	Tool Data - Services	Serial Number
Engineer: MIKE GARFIELD	PROBE BOND TOOL	080534
Operator: AARON ALLRED	PROBE GR/CCL	111211
Operator: AUSTIN RITER		
Operator:		

Log Variables

DatabaseC:\ProgramData\Warrior\Data\omimex_draco4-20-1-48_05-125-12128_20180808_scbl.db
Dataset field/well/run1/pass5/_vars_

Top - Bottom

BHTEMP_Src TEMP	BOREID in 7.875	BOTTEMP degF 100	CASEOD in 5.5	CASETHCK in 0.304	CASEWGHT lb/ft 17	MAXAMPL mV 0	MINAMPL mV 1
MINATTN db/ft 0.8	PERFS 0	PPT usec 0	SRFTEMP degF 70	TDEPTH ft 3842			

Variable Description

BHTEMP_Src : BHTEMP Input Source Selector
BOREID : Borehole I.D.
BOTTEMP : Bottom Hole Temperature
CASEOD : Casing O.D.
CASETHCK : Casing Thickness
CASEWGHT : Casing Weight
MAXAMPL : Maximum Amplitude

MINAMPL : Minimum Amplitude
MINATTN : Minimum Attenuation
PERFS : Perforation Flag
PPT : Predicted Pipe Time
SRFTEMP : Surface Temperature
TDEPTH : Total Depth

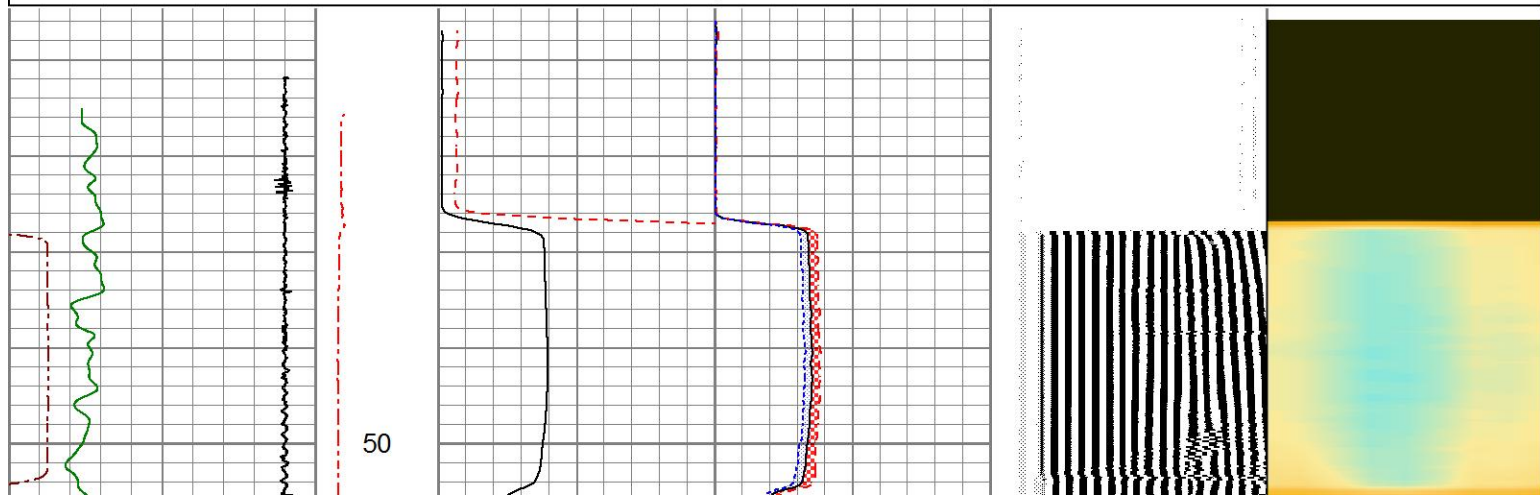


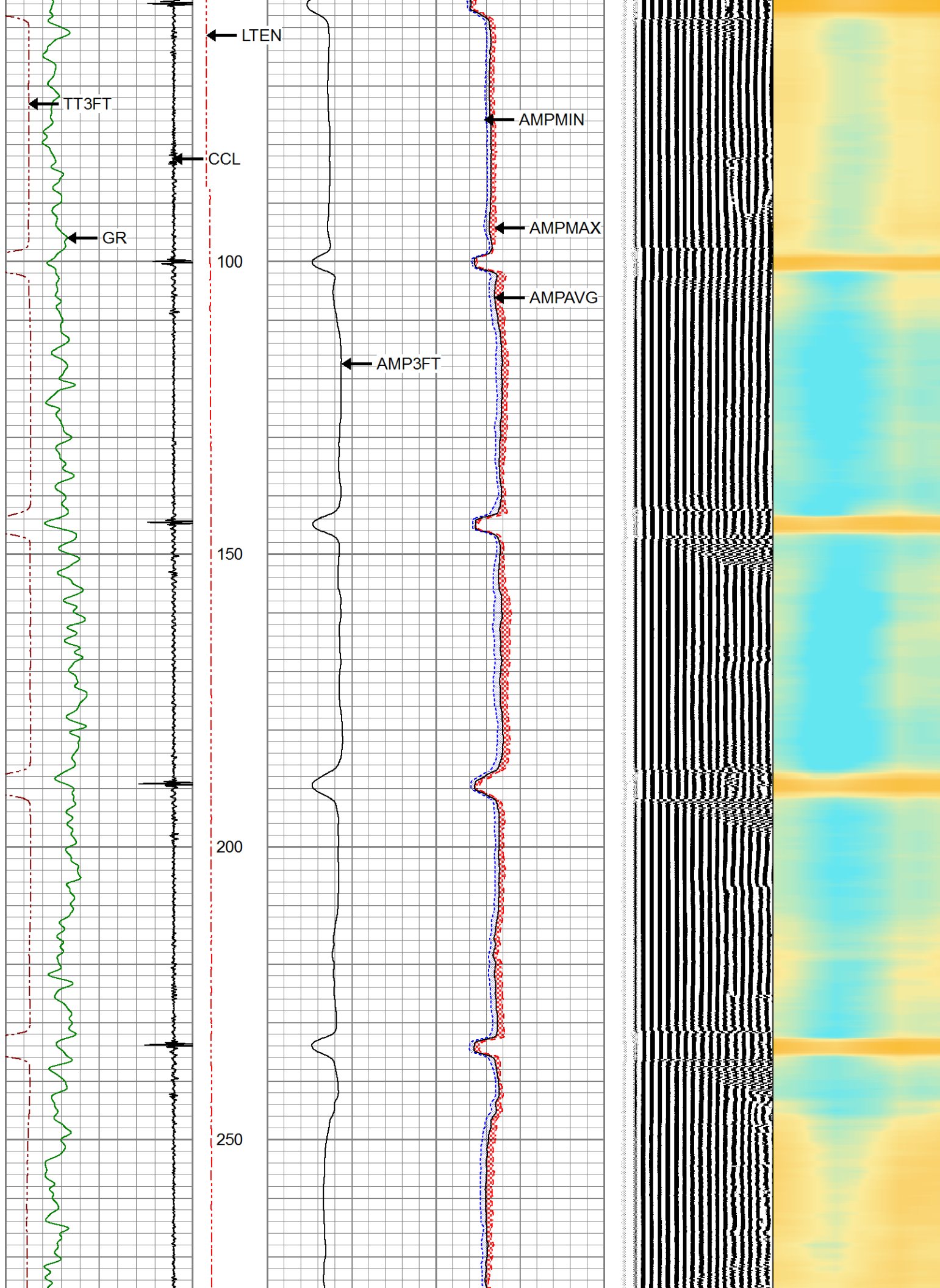
MAIN LOG

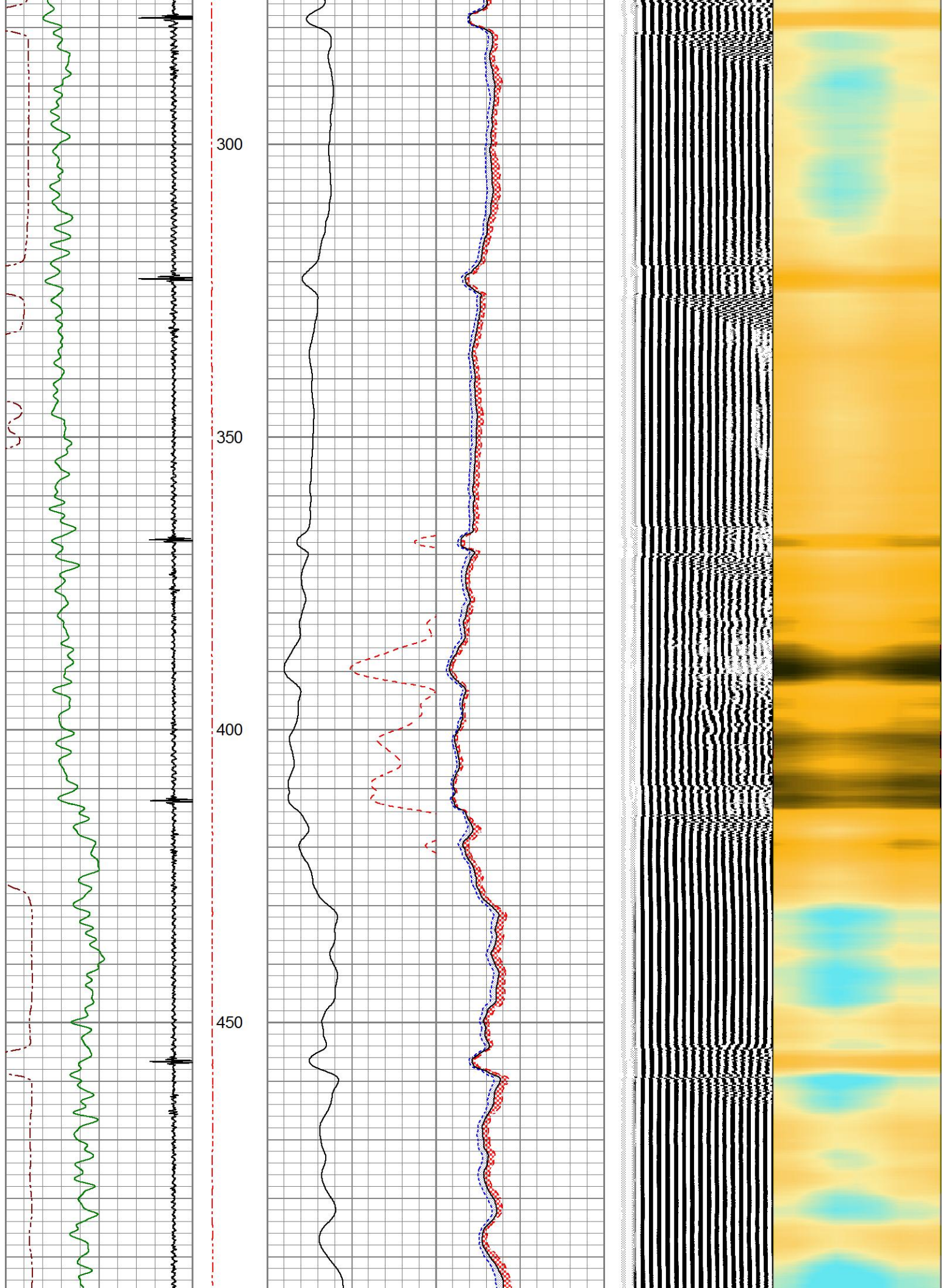
ZERO PSI APPLIED AT SURFACE

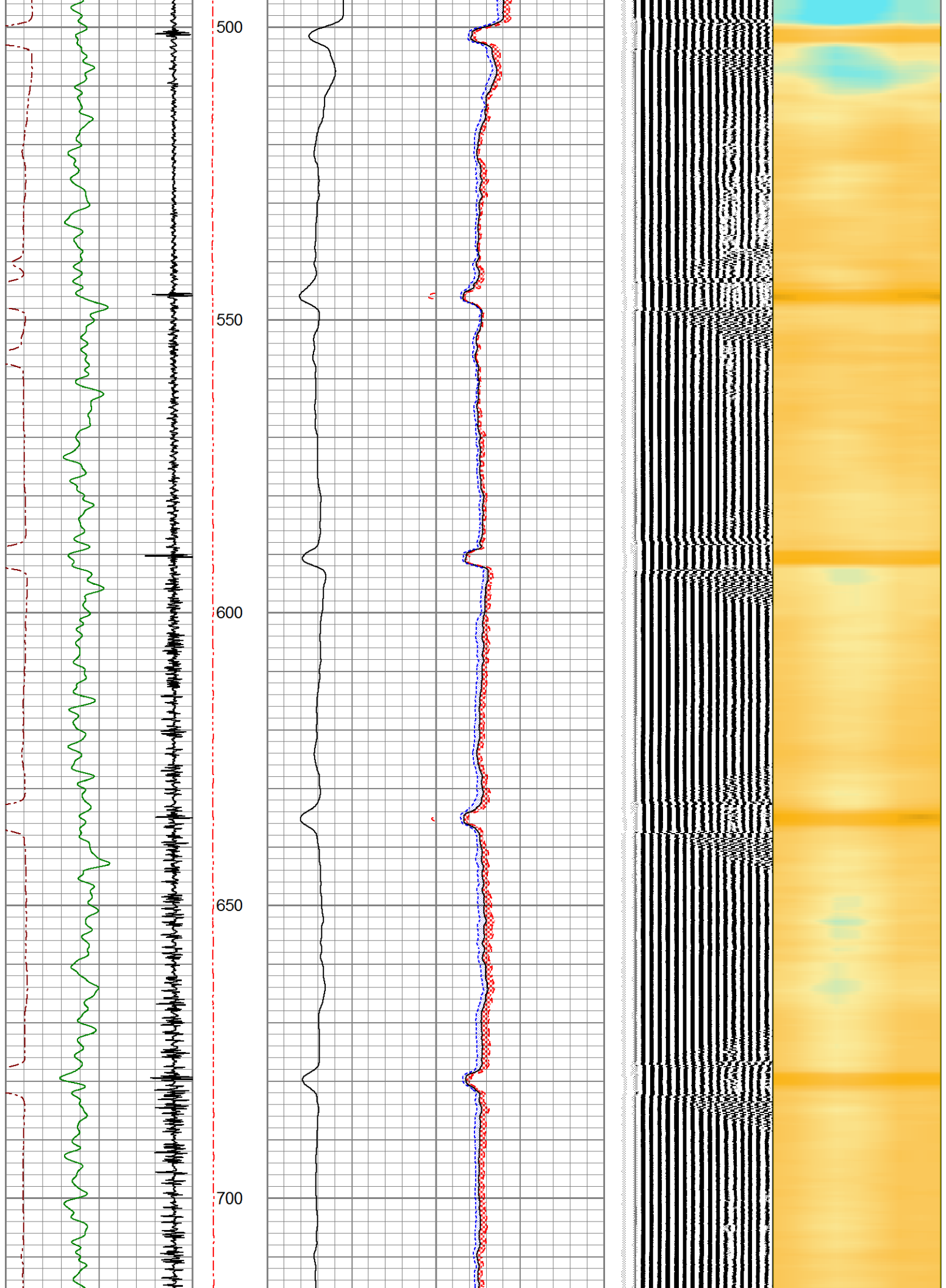
Database File omimex_draco4-20-1-48_05-125-12128_20180808_scbl.db
Dataset Pathname pass5
Presentation Format pinr_scbl
Dataset Creation Wed Aug 08 10:02:30 2018
Charted by Depth in Feet scaled 1:240

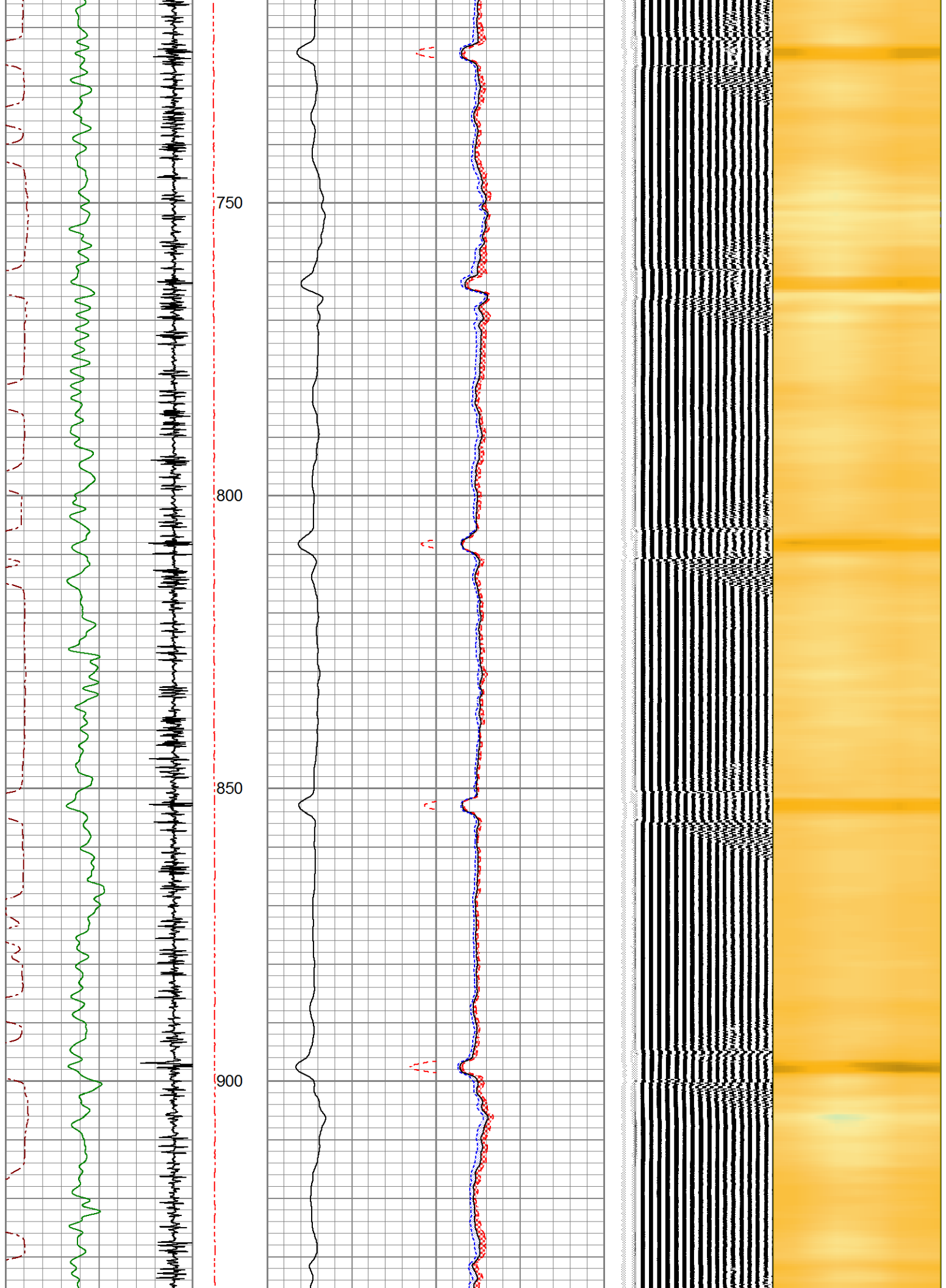
3Ft Travel Time 285 (usec) 185	lineTension (lb) 0 2000	3' Amplitude (mV) 0 100	Sector Amplitude Average	200 VDL (usec) 1200	1	Sector Map	8
-9 Collar Locator 1		3' Amplified Amplitude X 5	0 150				
Gamma Ray 0 (GAPI) 150		0 (mV) 20	Sector Amplitude Maximum				
			0 150				
			Sector Amplitude Minimum				
			0 150				

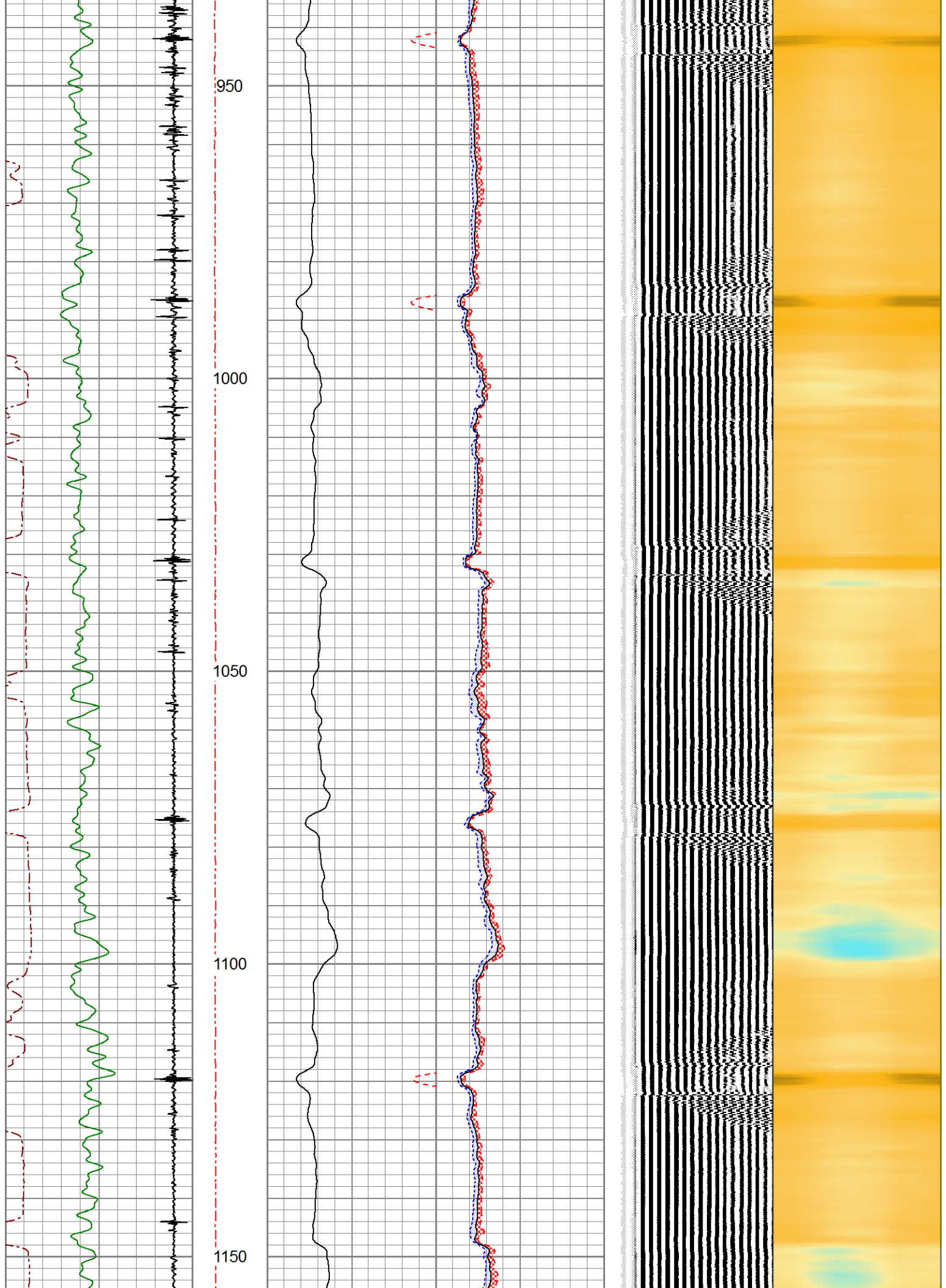


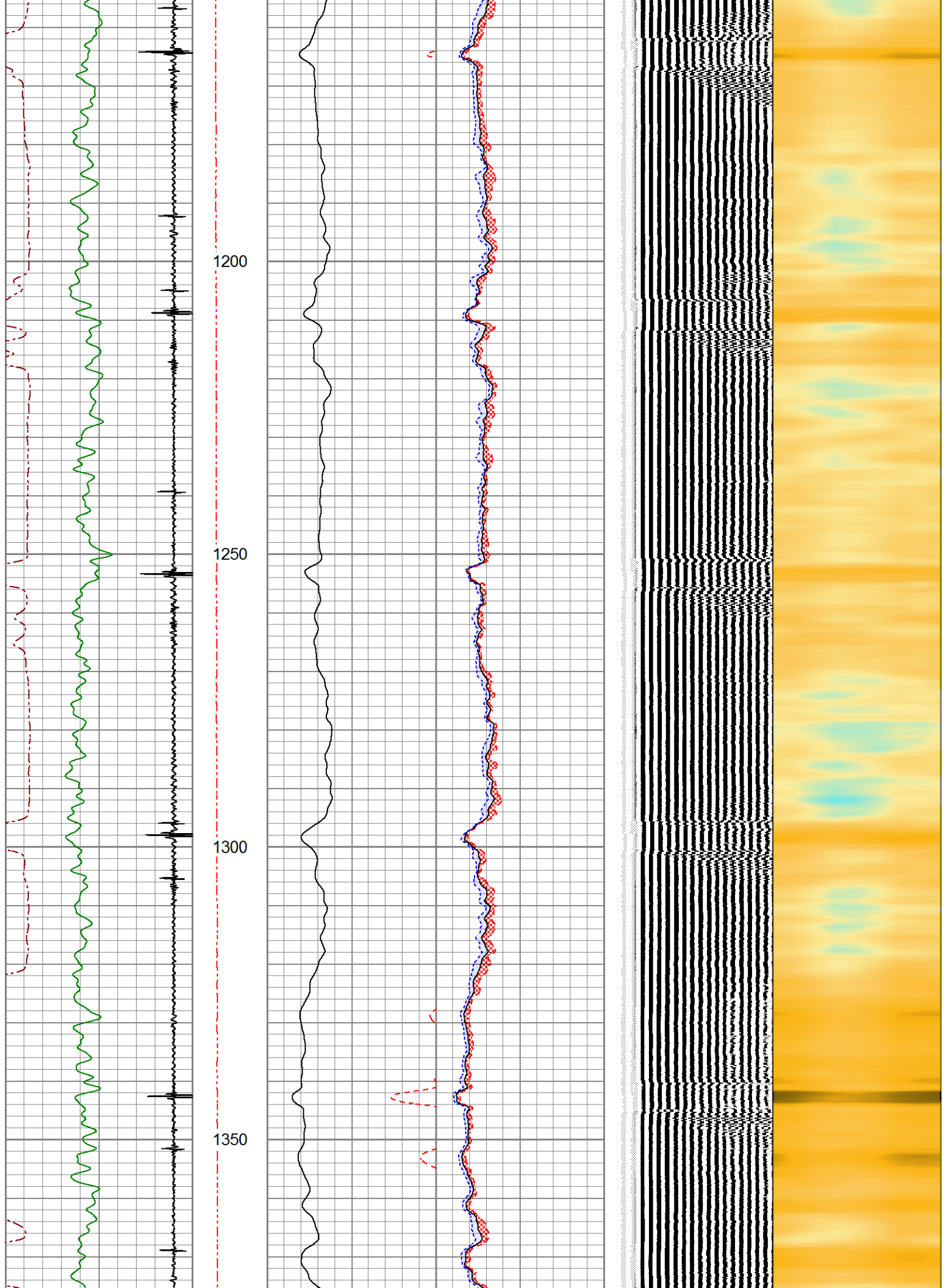


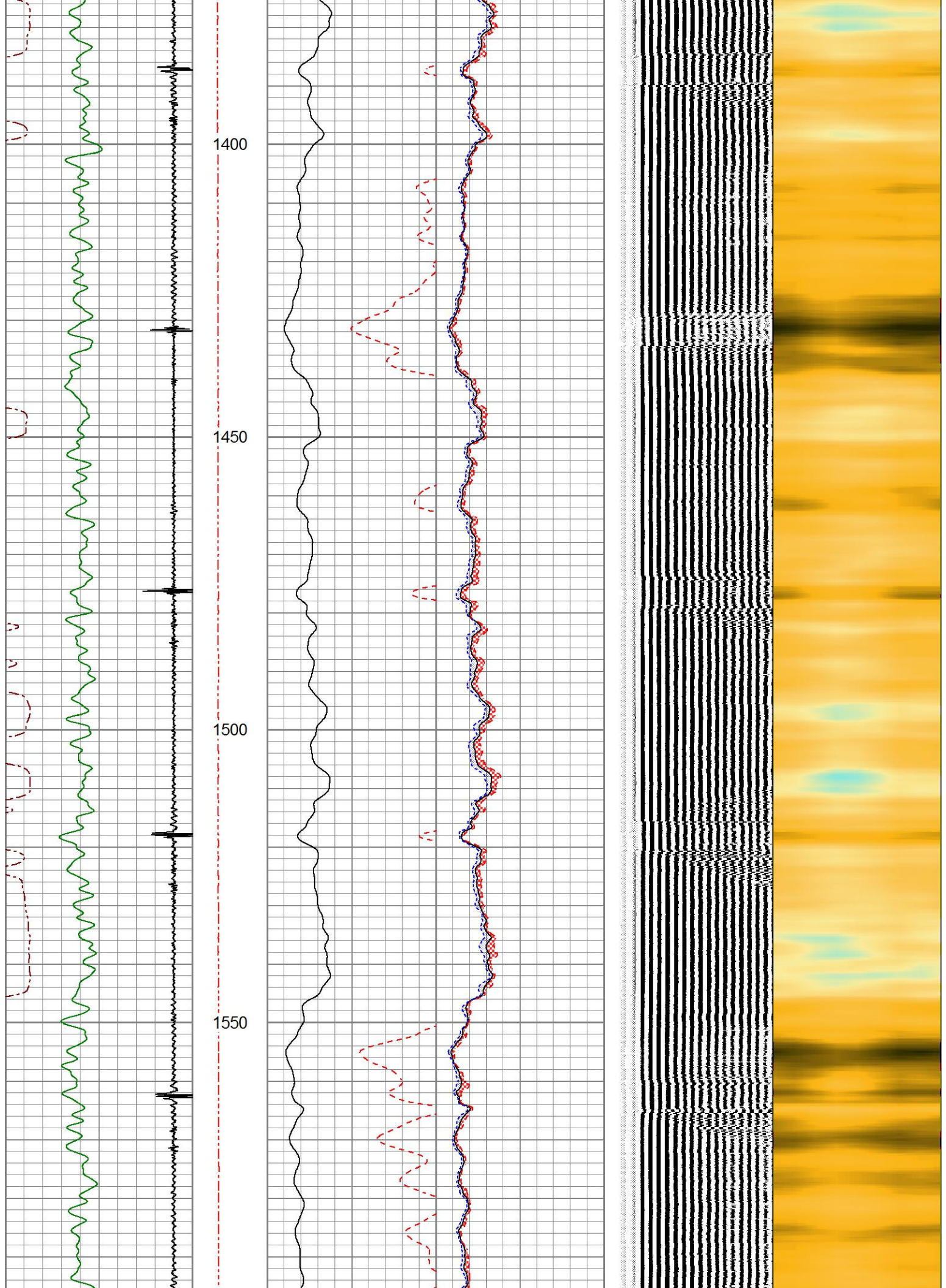


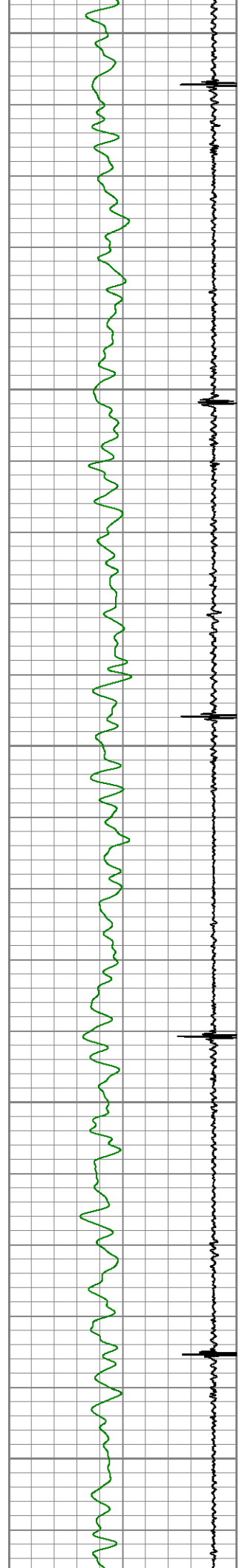












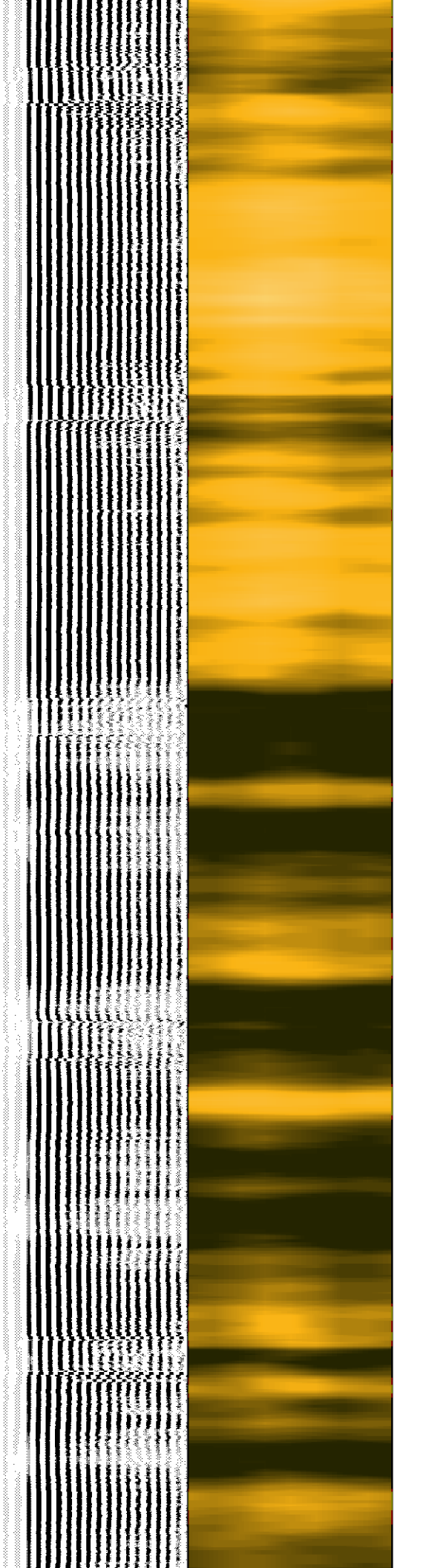
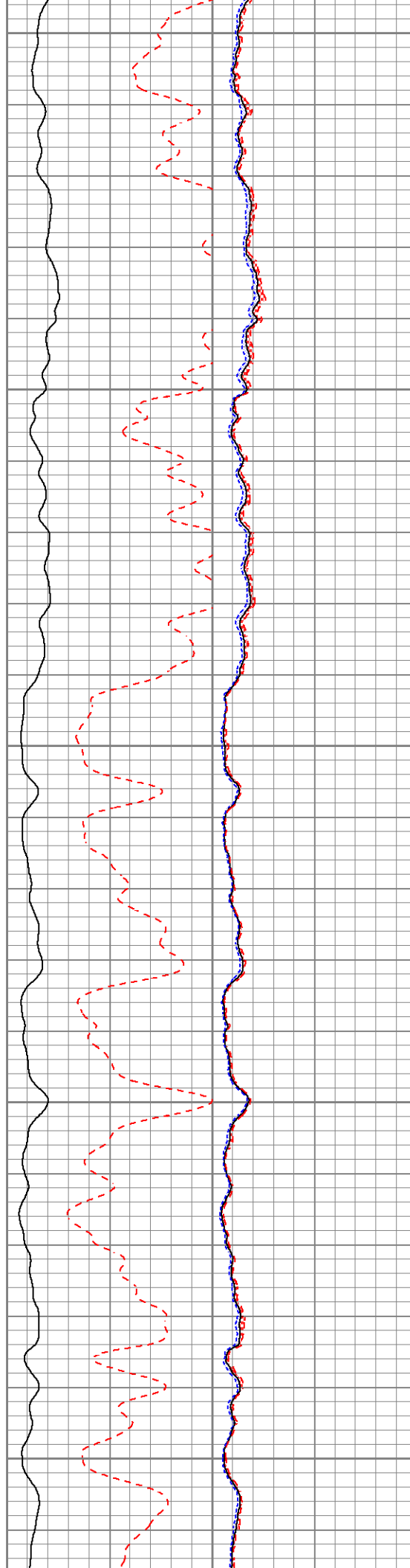
1600

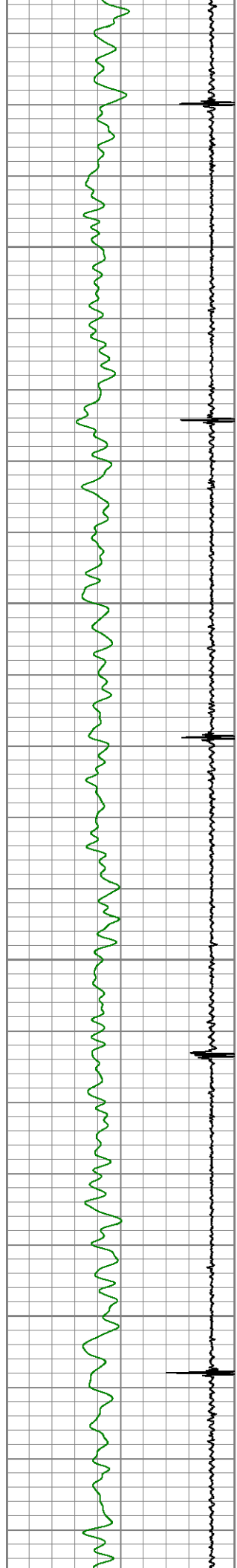
1650

1700

1750

1800



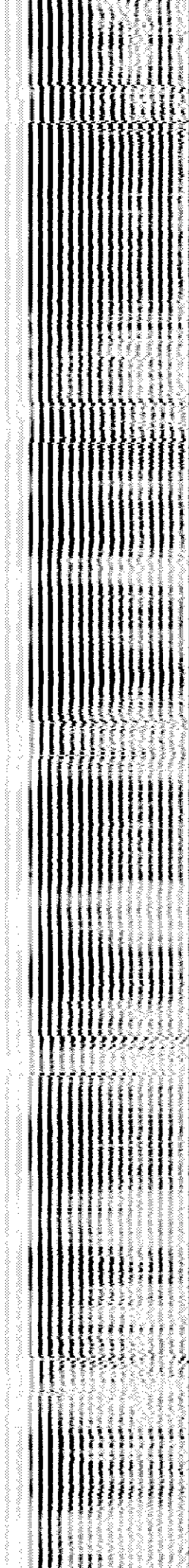
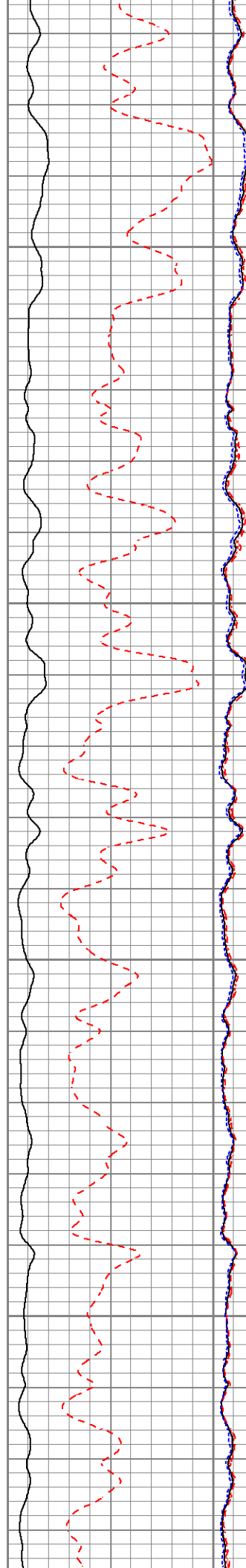


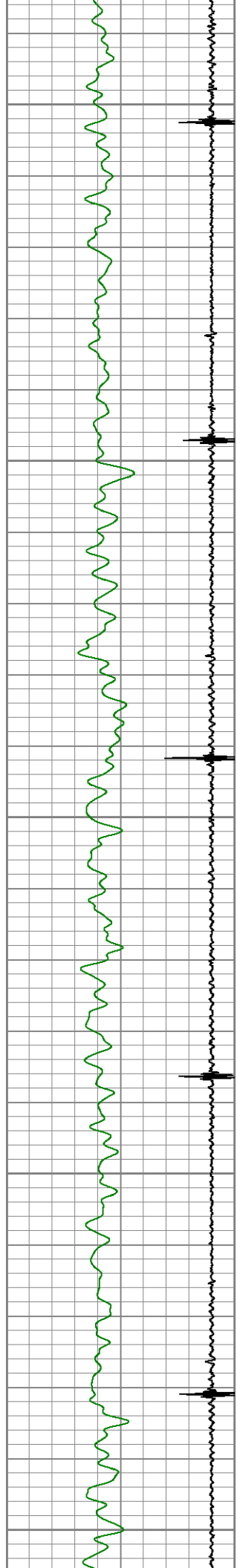
1850

1900

1950

2000





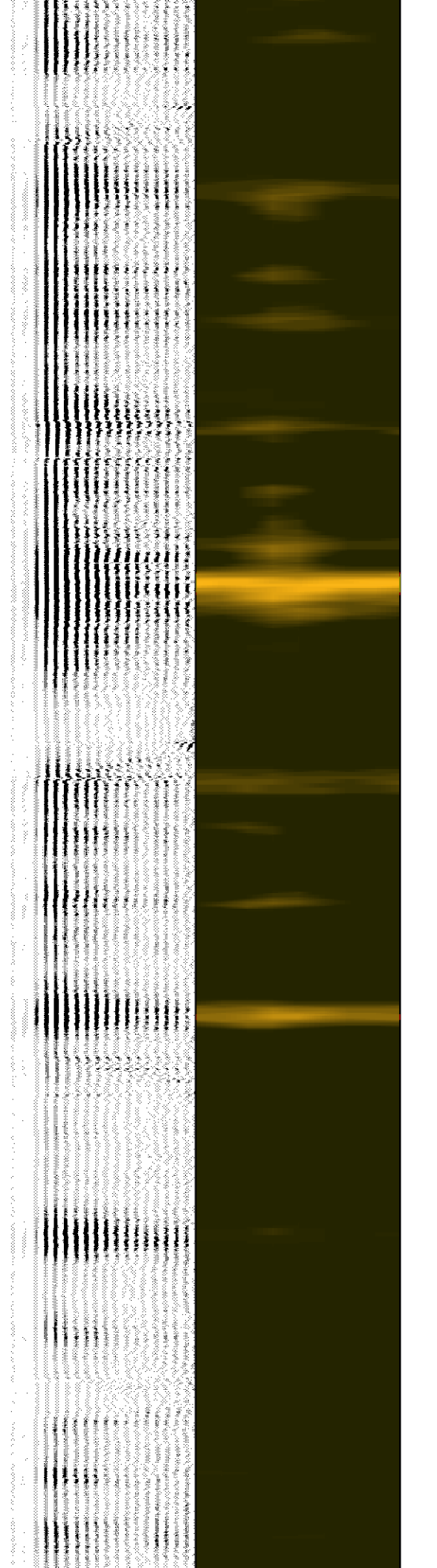
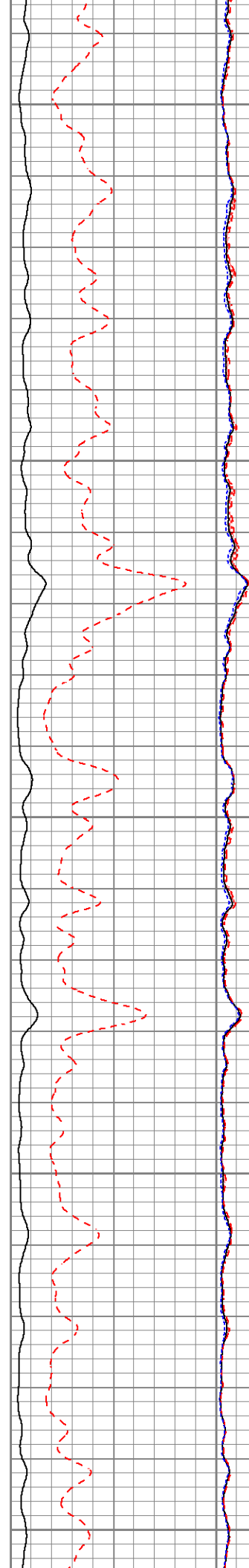
2050

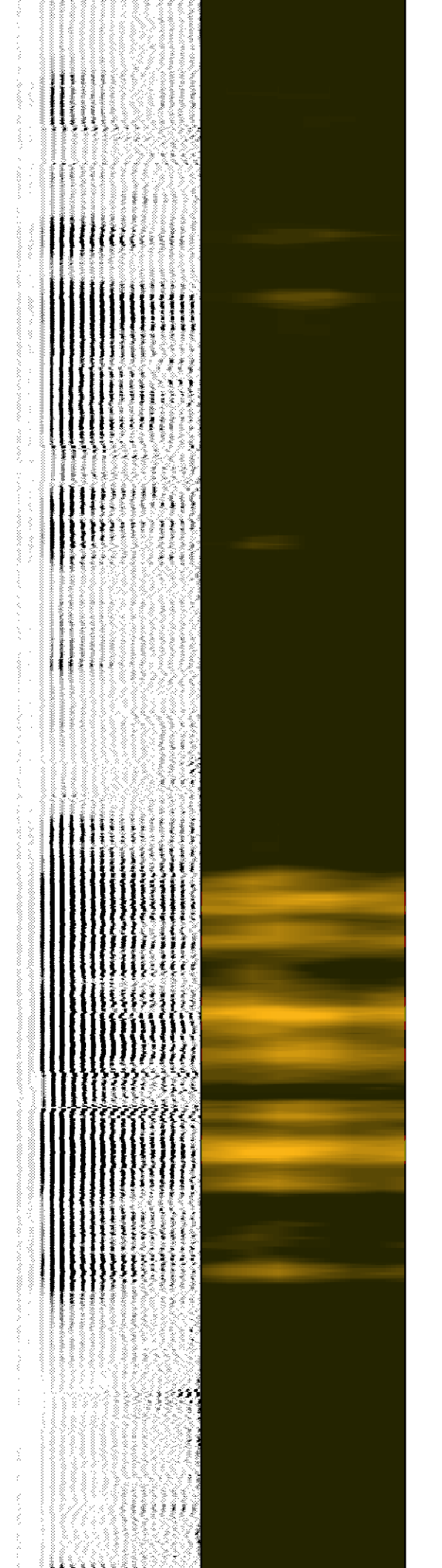
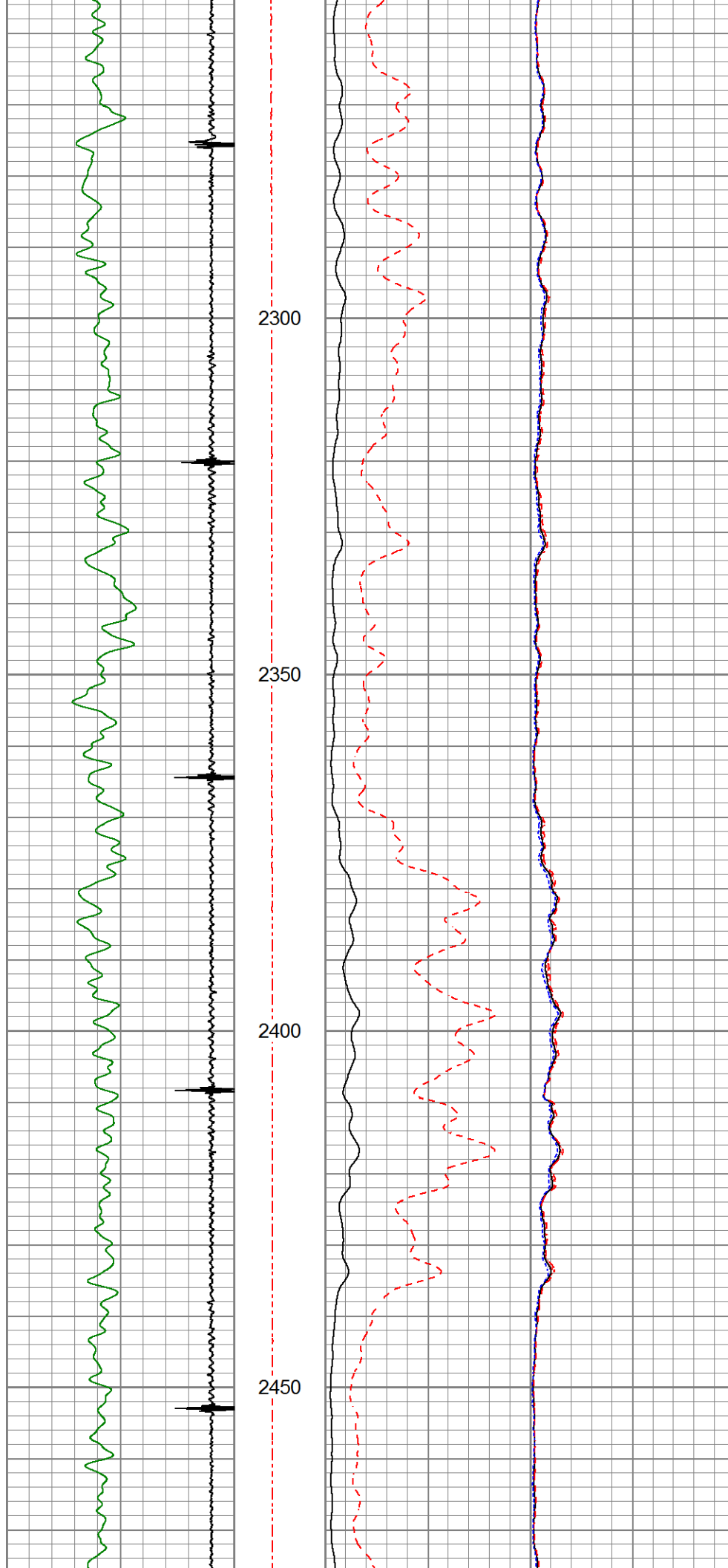
2100

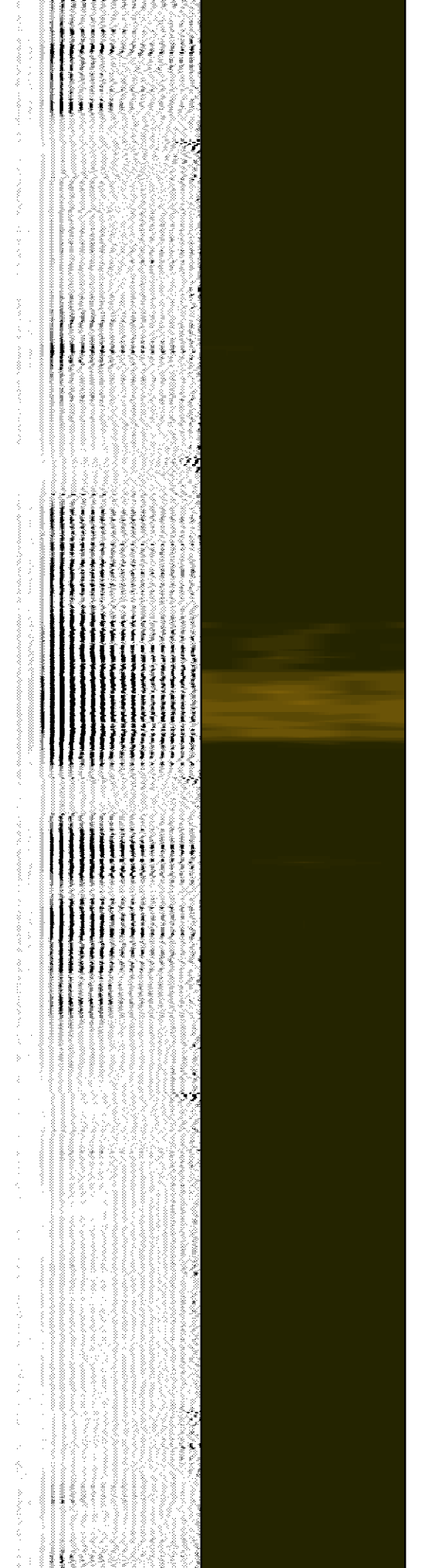
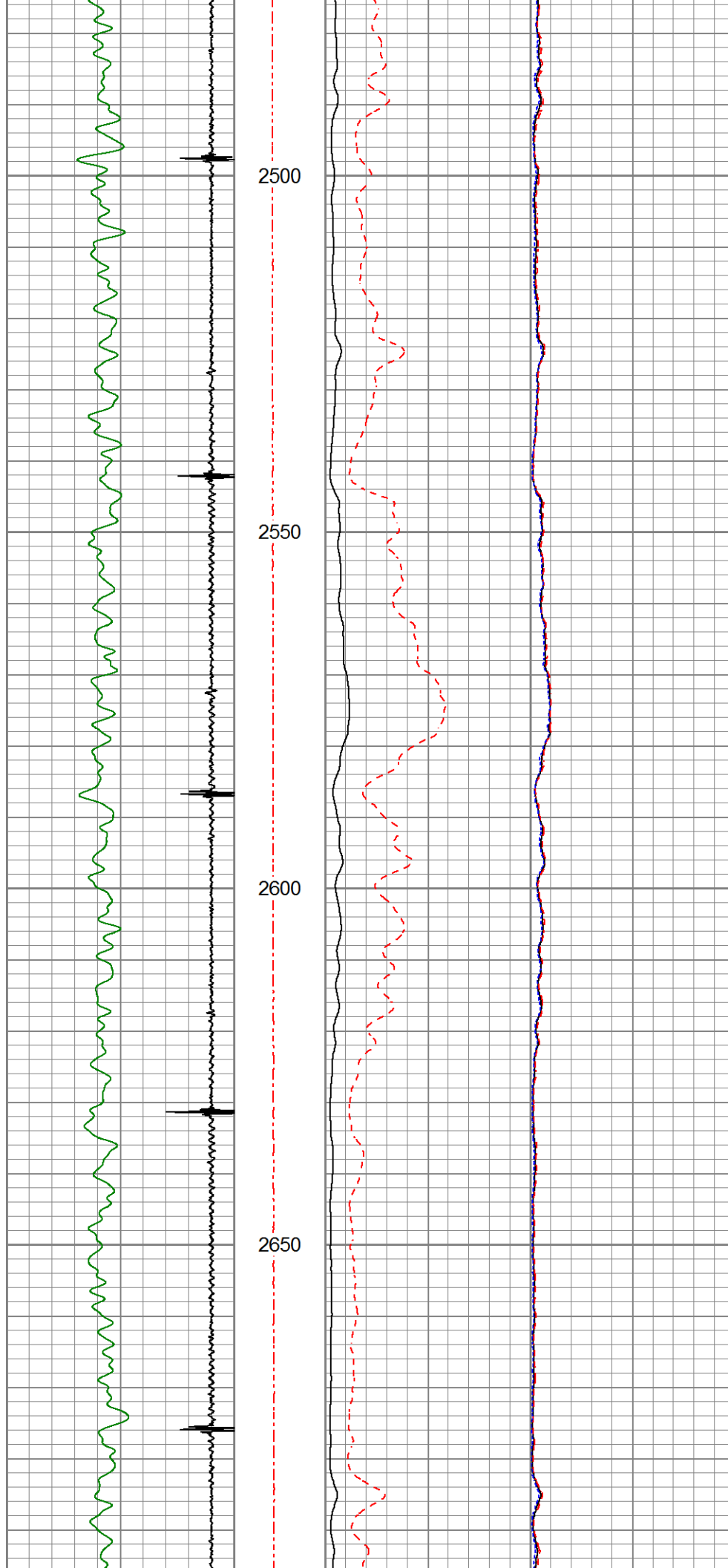
2150

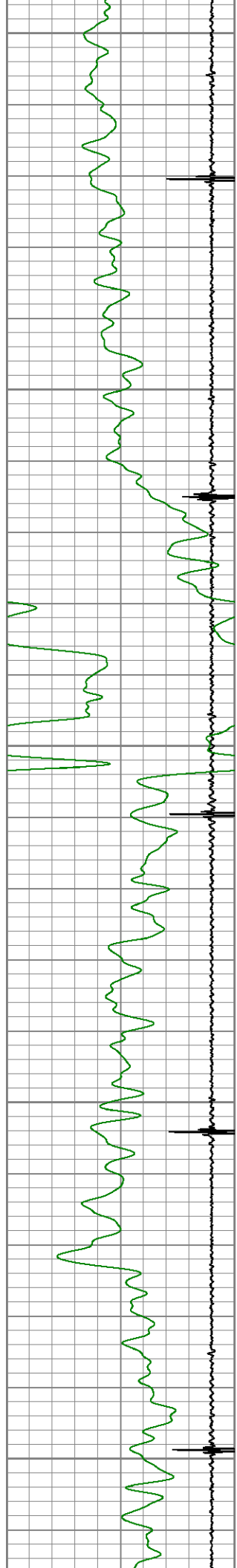
2200

2250









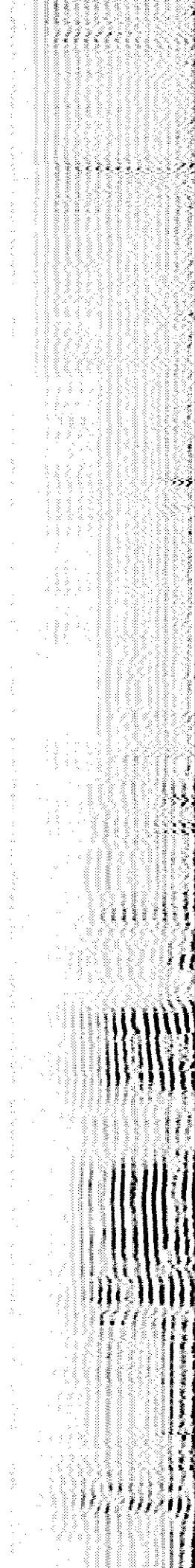
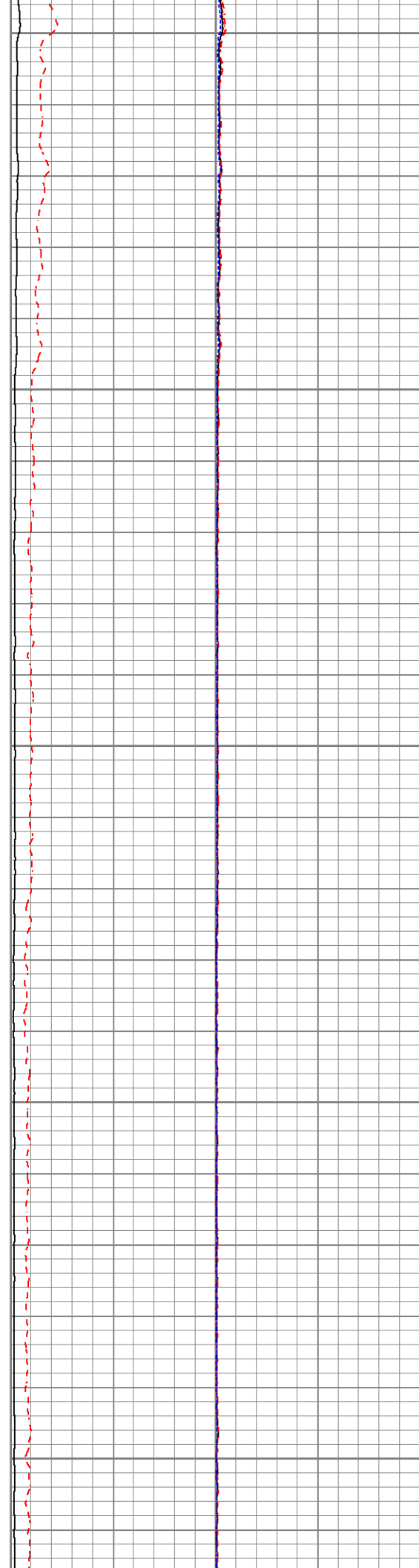
2700

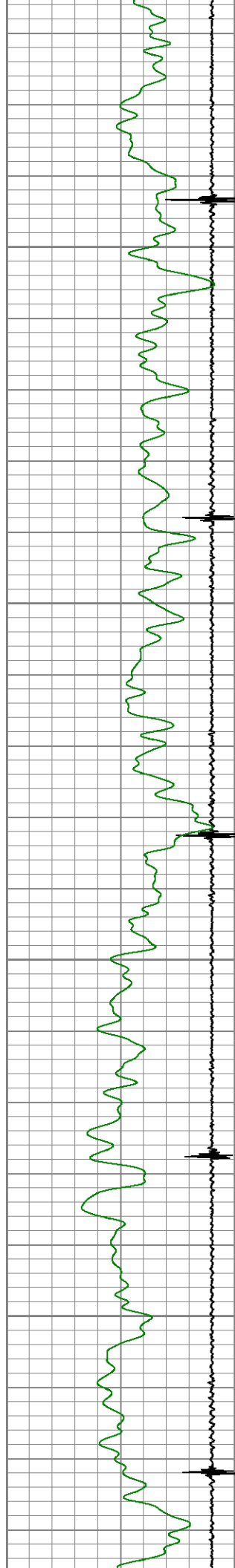
2750

2800

2850

2900



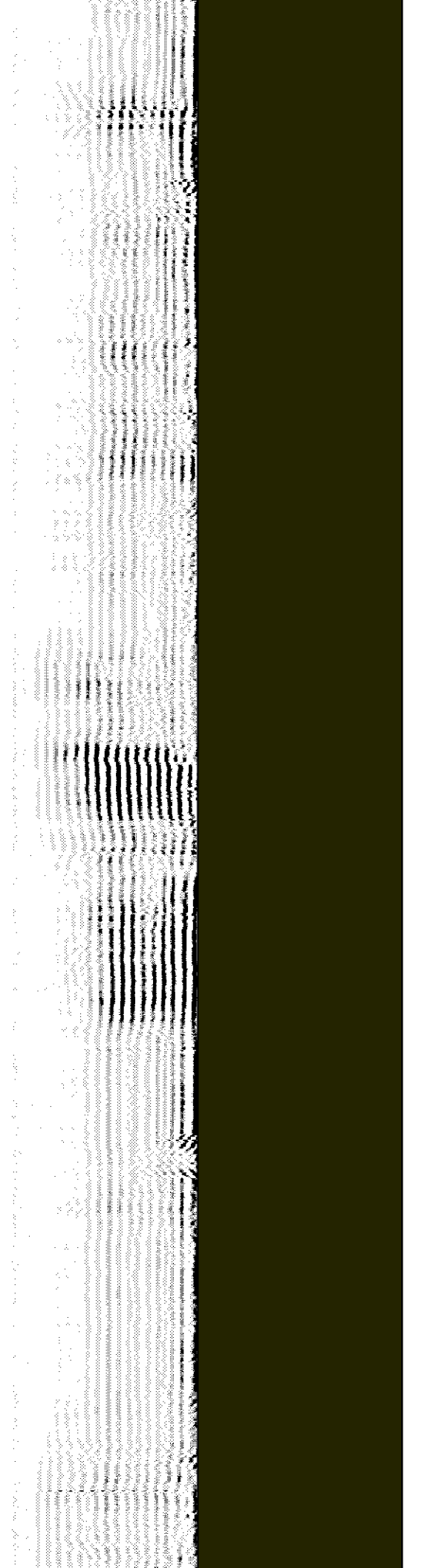
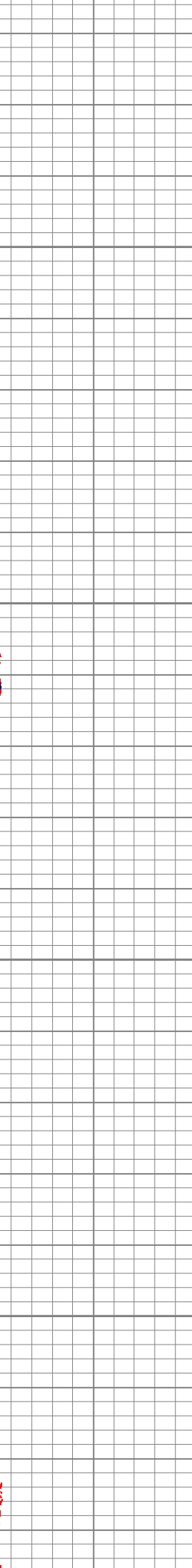


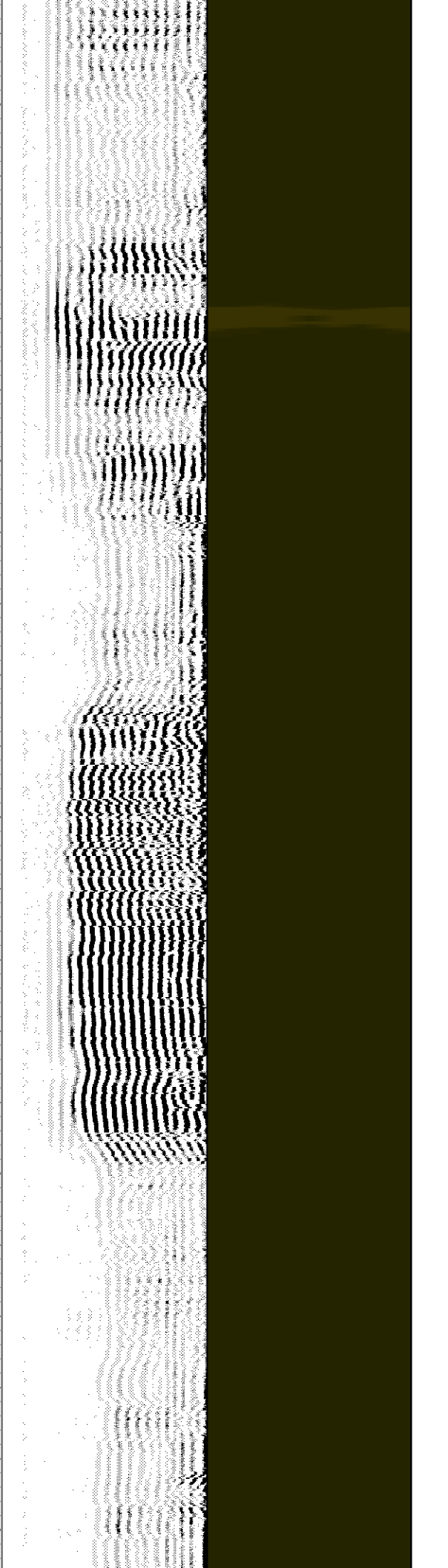
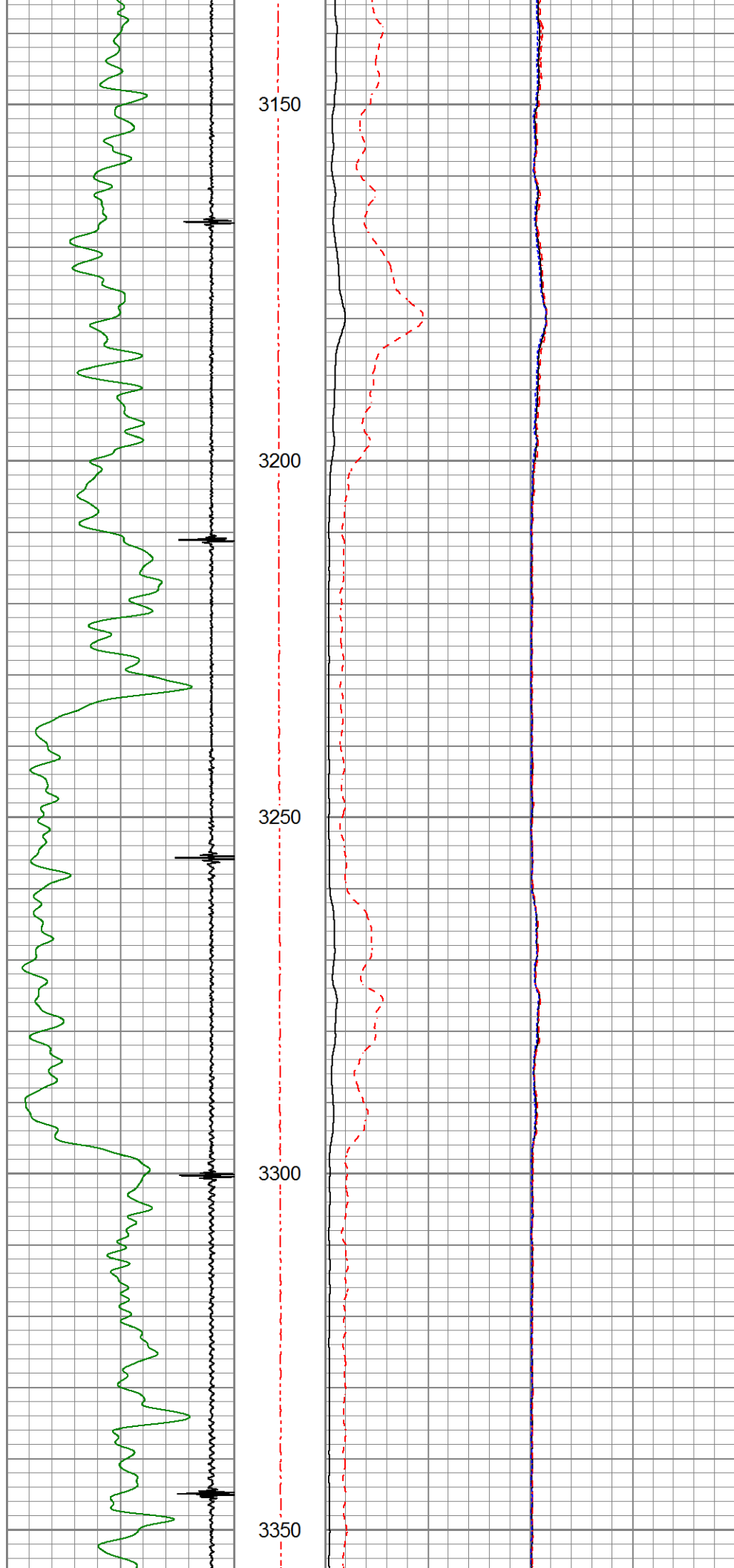
2950

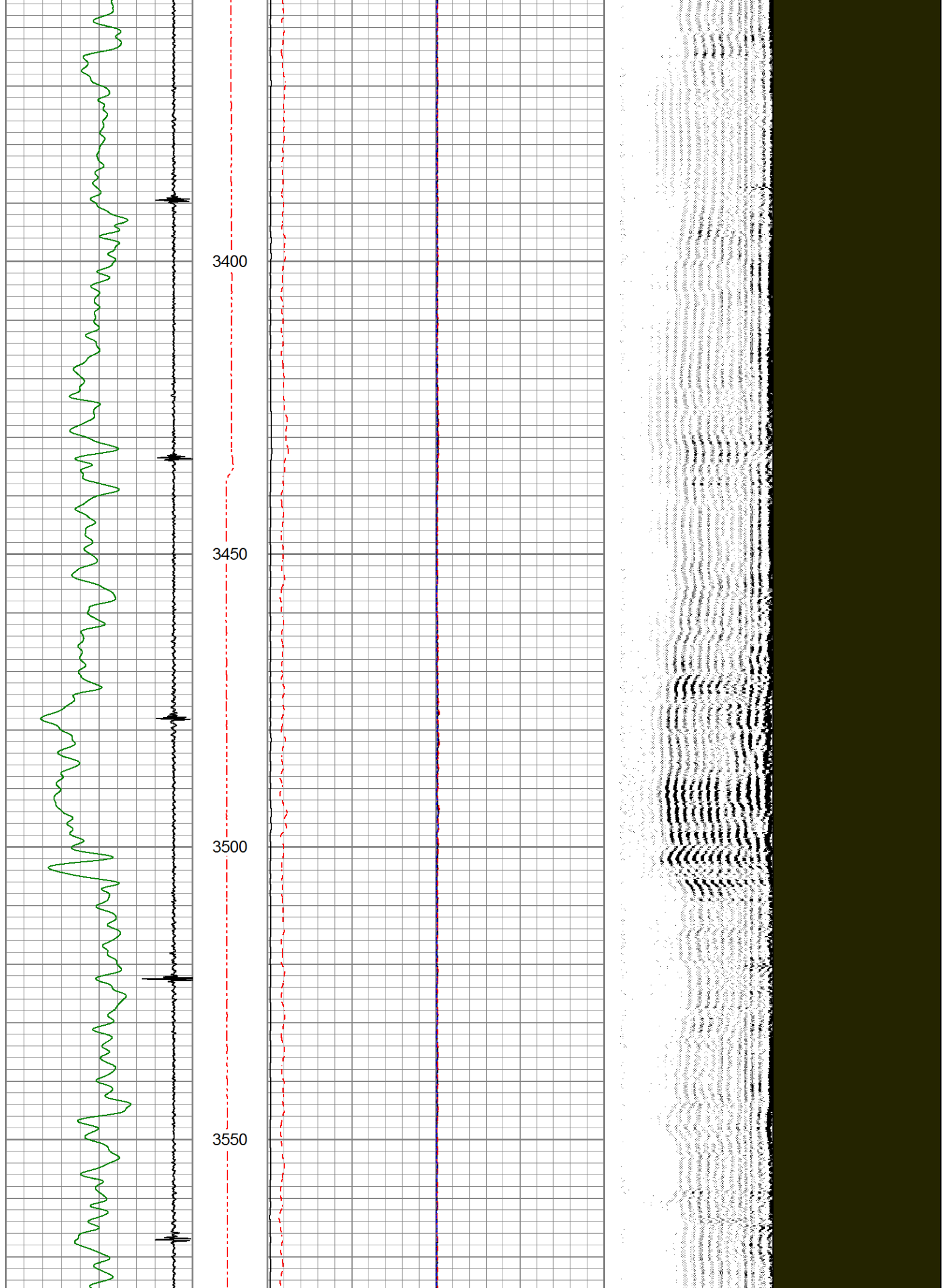
3000

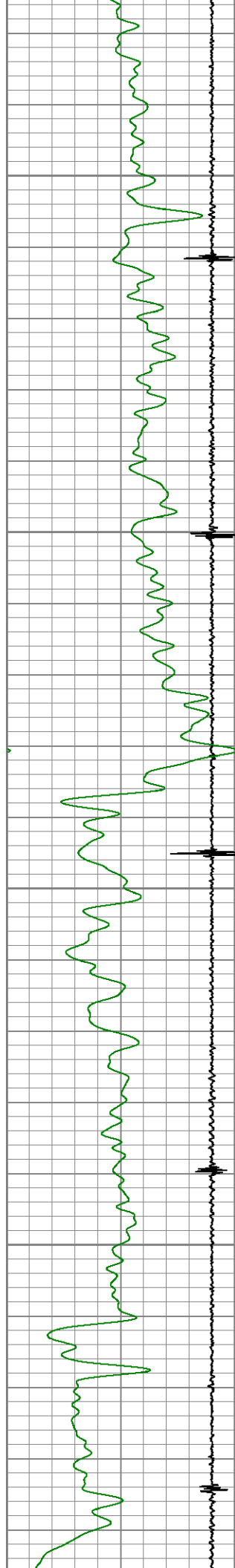
3050

3100







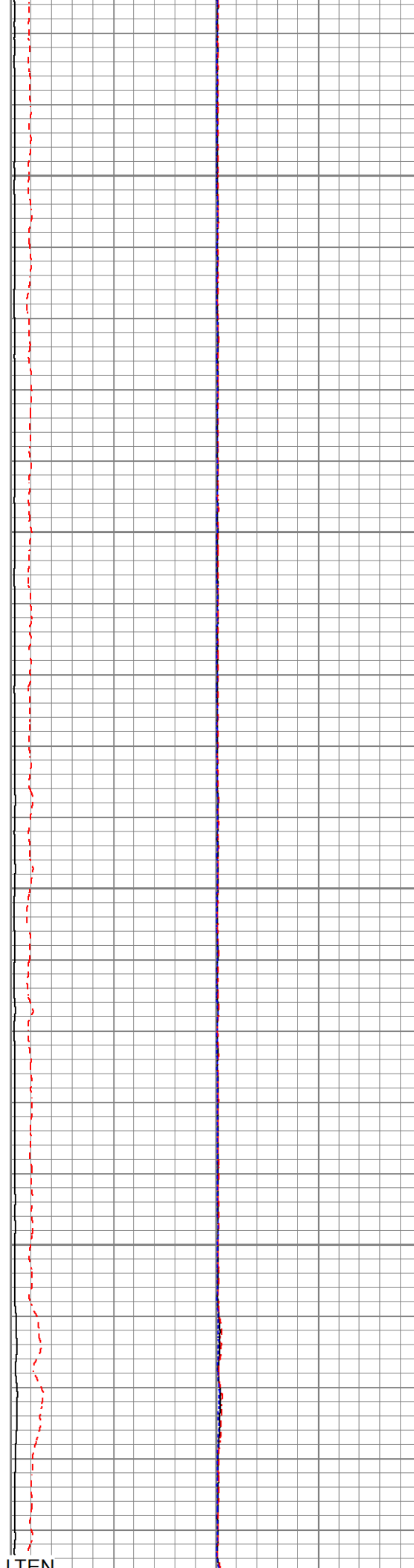


3600

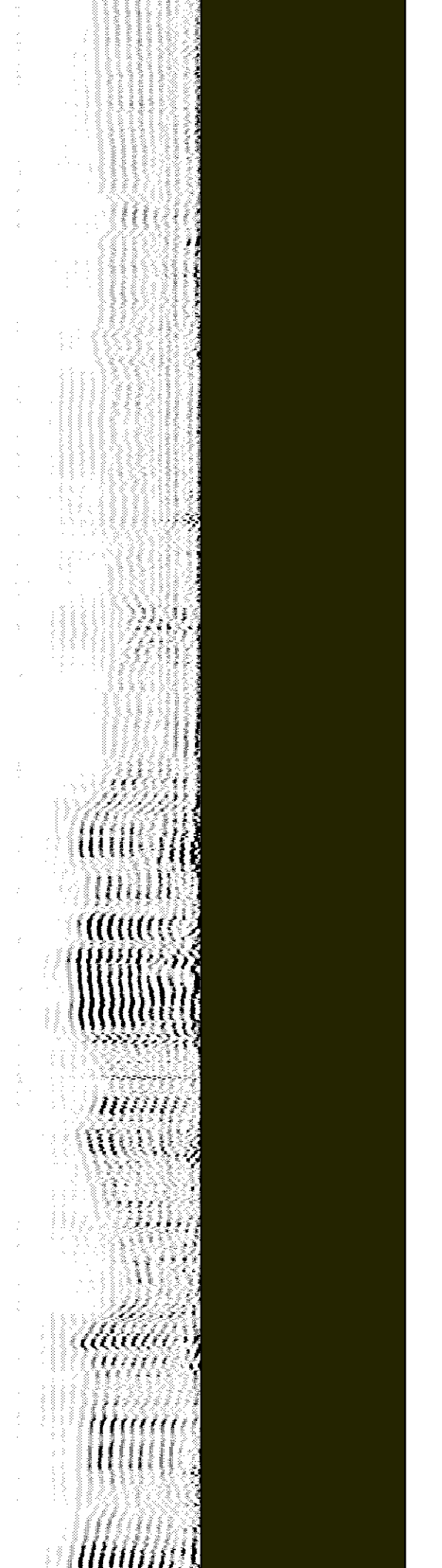
3650

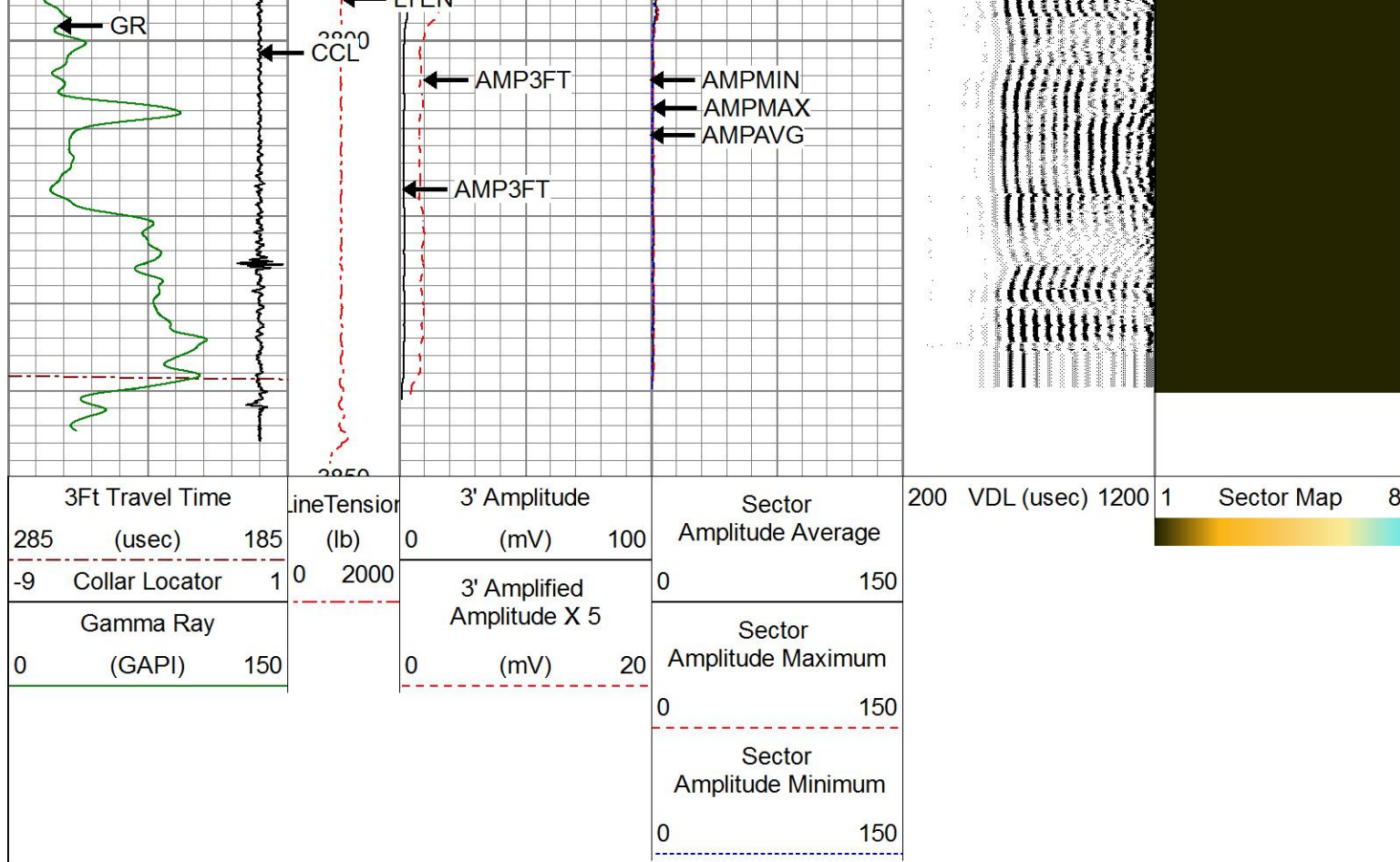
3700


3750



ITEN





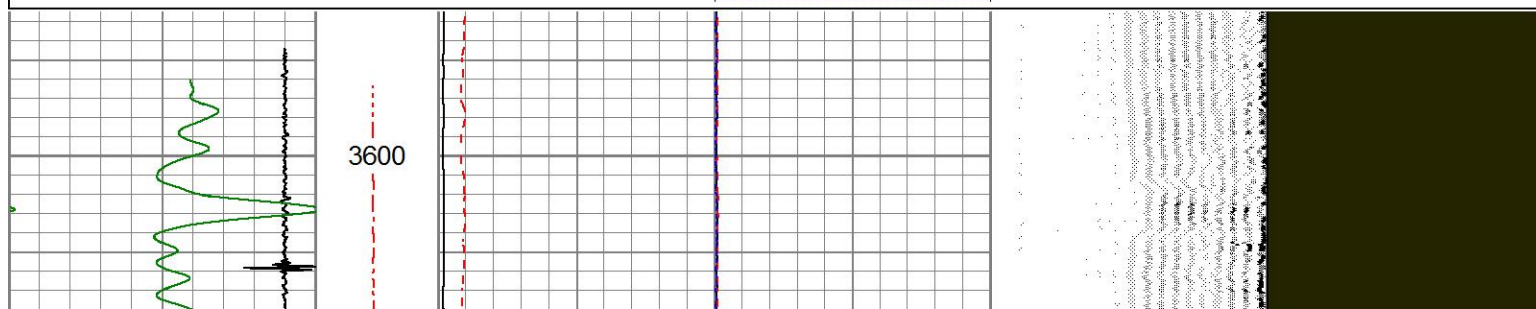
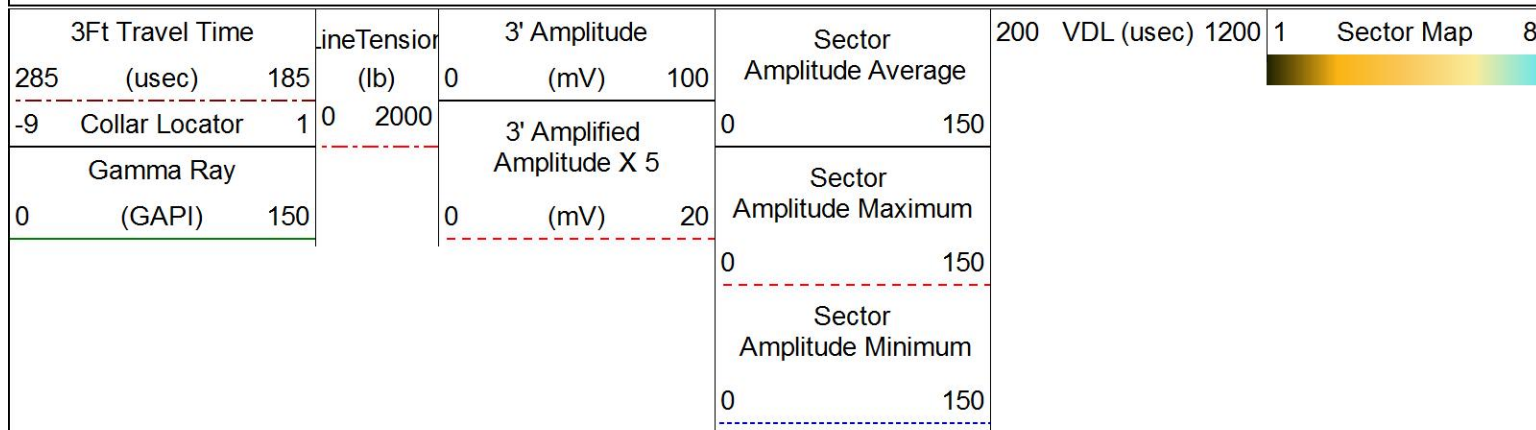


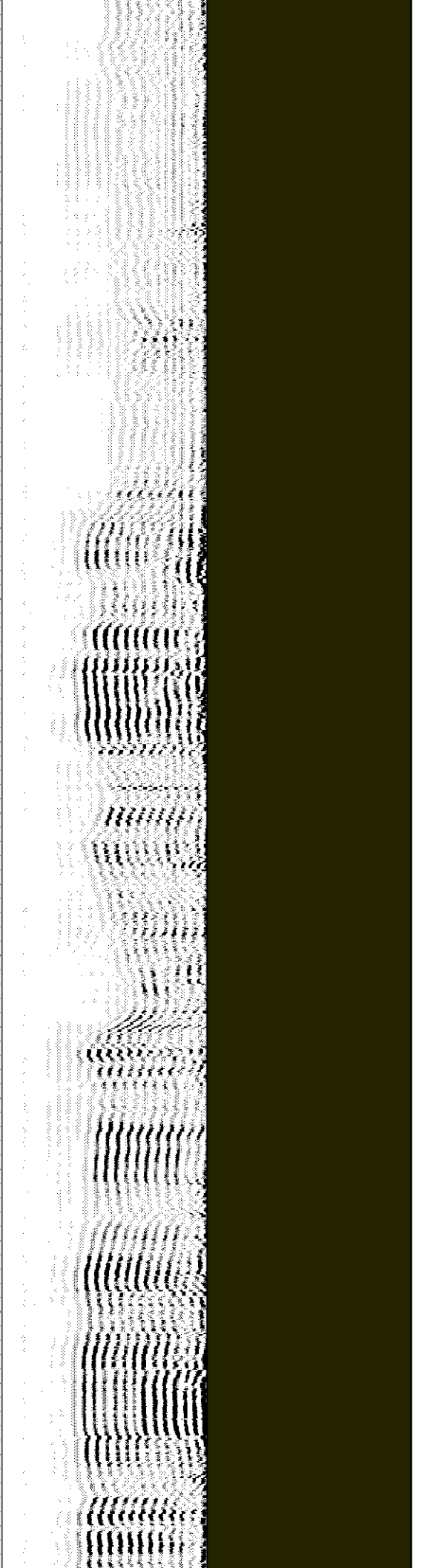
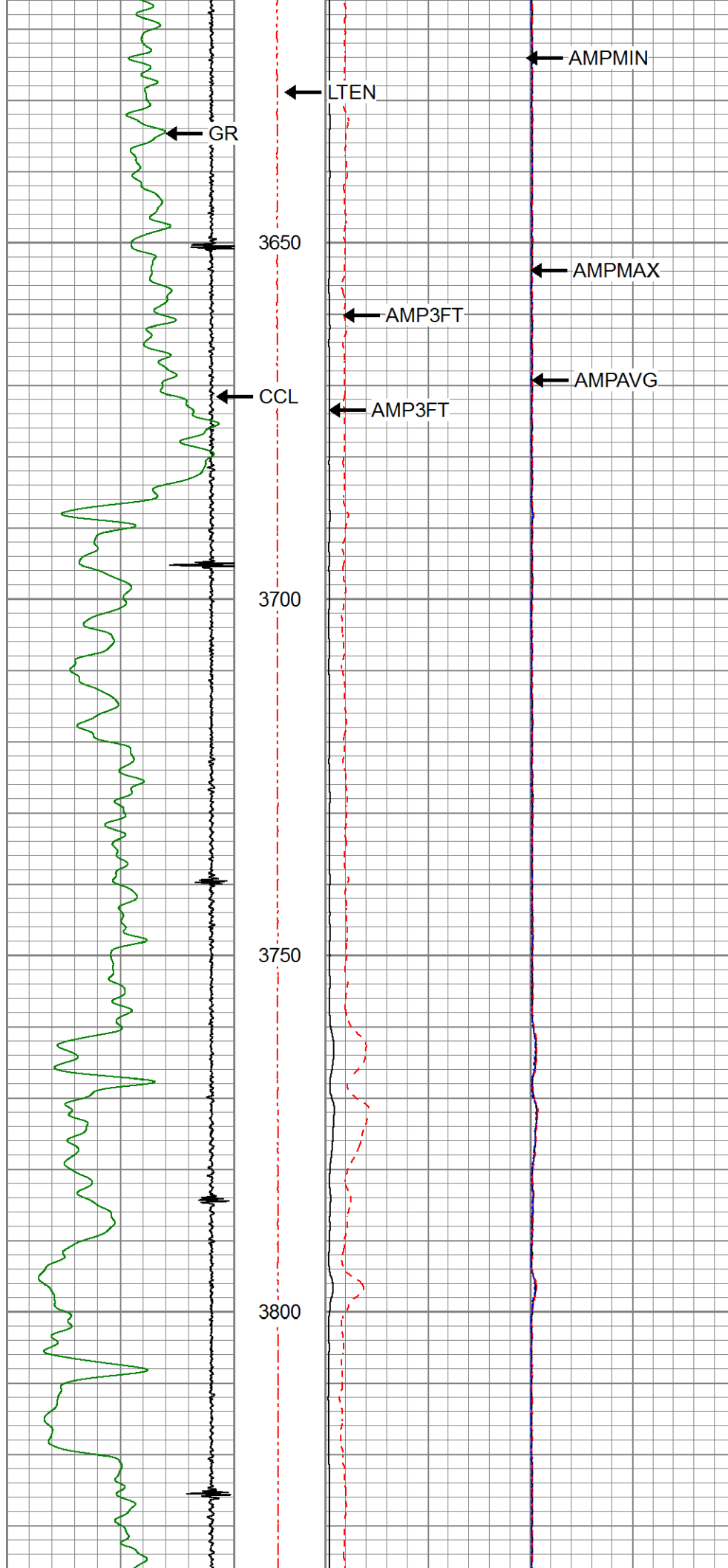
PIONEER
Pioneer Energy Services

REPEAT SECTION

ZERO PSI APPLIED AT SURFACE

Database File	omimex_draco4-20-1-48_05-125-12128_20180808_scbl.db
Dataset Pathname	pass3
Presentation Format	pinr_scbl
Dataset Creation	Wed Aug 08 09:49:55 2018
Charted by	Depth in Feet scaled 1:240





Air Zero Calibration, performed Wed Aug 08 08:55:30 2018:

	Raw (v)	Calibrated (v)	Results
	Zero	Zero	Offset
3'	0.000	0.000	0.000
5'	0.000	0.000	0.000
SUM			
S1	0.000	0.000	0.000
S2	0.000	0.000	0.000
S3	0.000	0.000	0.000
S4	0.000	0.000	0.000
S5	0.000	0.000	0.000
S6	0.000	0.000	0.000
S7	0.000	0.000	0.000
S8	0.000	0.000	0.000



Company	OMIMEX PETROLEUM
Well	DRACO 4-20-1-48
Field	WILDCAT
County	YUMA
State	COLORADO