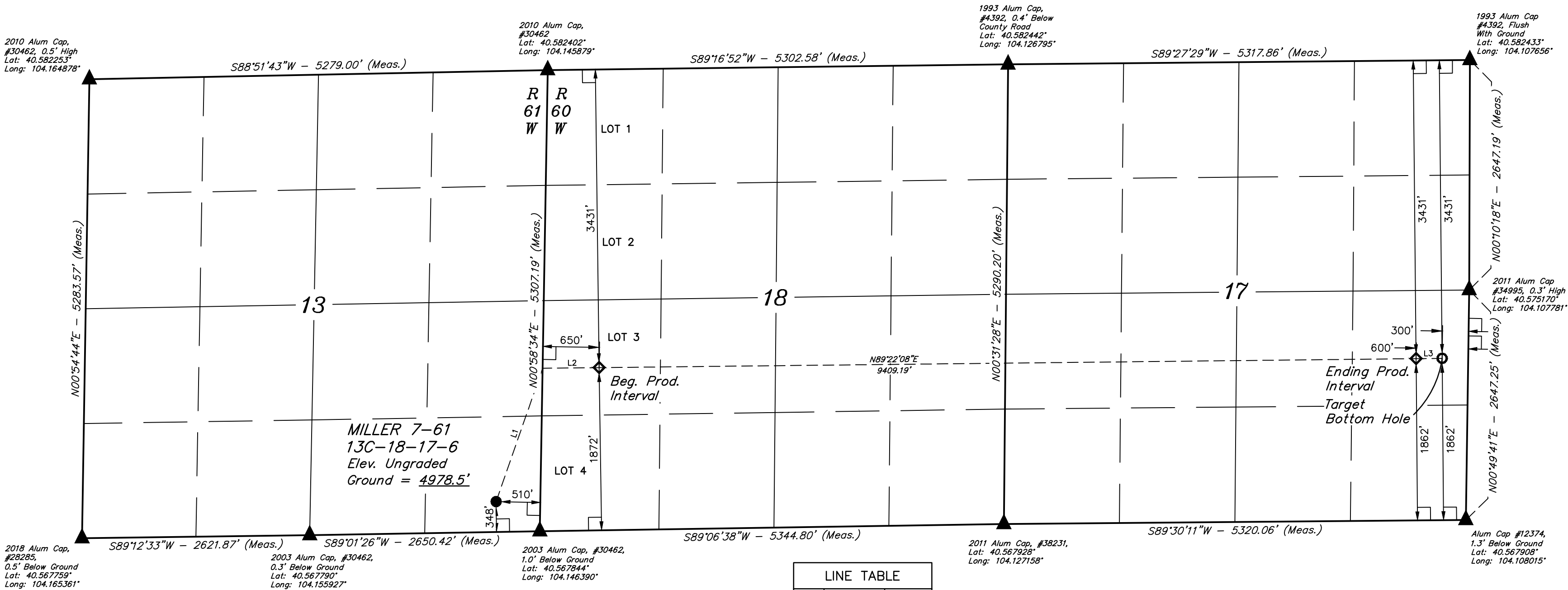
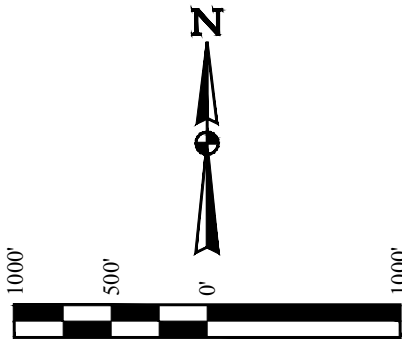


T7N, R61W, 6th P.M.

BISON OIL & GAS II
MILLER 7-61 13C-18-17-6
SE 1/4 SE 1/4, SECTION 13, T7N, R61W, 6th P.M.
WELD COUNTY, COLORADO

BASIS OF BEARINGS
TRANSVERSE MERCATOR PROJECTION WITH
A CENTRAL MERIDIAN OF W105°00'00".
BASIS OF ELEVATION
OPUS SOLUTION GENERATED NAVD 88



LINE TABLE		
LINE	DIRECTION	LENGTH
L1	N19°14'53"E	1626.68'
L2	N89°22'08"E	650.26'
L3	N89°27'29"E	300.09'



- LEGEND:
- 90° SYMBOL
 - PROPOSED WELLHEAD.
 - PRODUCTION INTERVAL.
 - TARGET BOTTOM HOLE.
 - SECTION CORNERS LOCATED. (NAD 83)

SURFACE LOCATION 348' FSL 510' FEL	BEG. PROD. INTERVAL 3431' FNL 1872' FSL 650' FWL	ENDING PROD. INTERVAL 3431' FNL 1862' FSL 600' FEL	TARGET BOTTOM HOLE 3431' FNL 1862' FSL 300' FEL
NAD 83 (SURFACE LOCATION) LATITUDE = 40°34'07.64" (40.568789°) LONGITUDE = 104°08'53.49" (104.148193°)	NAD 83 (BEG. PROD. INTERVAL) LATITUDE = 40°34'22.77" (40.572991°) LONGITUDE = 104°08'37.93" (104.143870°)	NAD 83 (ENDING PROD. INTERVAL) LATITUDE = 40°34'22.87" (40.573020°) LONGITUDE = 104°06'36.04" (104.110010°)	NAD 83 (TARGET BOTTOM HOLE) LATITUDE = 40°34'22.87" (40.573019°) LONGITUDE = 104°06'32.15" (104.108930°)
NAD 27 (SURFACE LOCATION) LATITUDE = 40°34'07.70" (40.568804°) LONGITUDE = 104°08'51.67" (104.147687°)	NAD 27 (BEG. PROD. INTERVAL) LATITUDE = 40°34'22.82" (40.573006°) LONGITUDE = 104°08'36.11" (104.143364°)	NAD 27 (ENDING PROD. INTERVAL) LATITUDE = 40°34'22.92" (40.573034°) LONGITUDE = 104°06'34.22" (104.109505°)	NAD 27 (TARGET BOTTOM HOLE) LATITUDE = 40°34'22.92" (40.573034°) LONGITUDE = 104°06'30.33" (104.108425°)
STATE PLANE NAD 83 (CO. NORTH) N: 1452913.56' E: 3375540.42'	STATE PLANE NAD 83 (CO. NORTH) N: 1454462.56' E: 3376717.89'	STATE PLANE NAD 83 (CO. NORTH) N: 1454618.60' E: 3386122.74'	STATE PLANE NAD 83 (CO. NORTH) N: 1454623.11' E: 3386422.69'
STATE PLANE NAD 27 (CO. NORTH) N: 452913.18' E: 2375690.71'	STATE PLANE NAD 27 (CO. NORTH) N: 454462.14' E: 2376868.19'	STATE PLANE NAD 27 (CO. NORTH) N: 454618.03' E: 2386273.35'	STATE PLANE NAD 27 (CO. NORTH) N: 454622.54' E: 2386573.31'

CERTIFICATE OF SURVEY
THIS IS TO CERTIFY THAT THE ABOVE DESCRIBED SURVEY WAS MADE IN ACCORDANCE WITH THE NOTES OF ACTUAL SURVEYS MADE AND UNDER MY SUPERVISION, AND THAT THE SAME ARE TRUE AND CORRECT TO THE BEST OF MY KNOWLEDGE AND BELIEF.

REGISTERED LAND SURVEYOR
REGISTRATION NO. 28285
STATE OF COLORADO
JUL 12 2018

ENGINEERING & LAND SURVEYING

UELS, LLC
Corporate Office * 85 South 200 East
Vernal, UT 84078 * (435) 789-1017

SURVEYED BY: MATTHEW MILLER, D.E.
DRAWN BY: C.MVE

07-05-18
07-17-18

SCALE
1" = 1000'

WELL LOCATION PLAT