



07/02/2018

Colorado Oil and Gas Conservation Commission
1120 Lincoln Street, Suite 801
Denver, CO 80203

RE: Proposed Wellbore Spacing Unit
B-Farm LD 18-386HN
Niobrara New Drill
NENW Sec. 7, Township 1S, Range 67W
Adams County, Colorado

Dear Director Murphy,

Great Western Operating Company, LLC (Great Western) is planning to drill the above captioned well in accordance with the provisions of Colorado Oil and Gas Conservation Commission (COGCC) Rule 318A.e.

Great Western's proposed wellbore spacing unit consists of:

Township 1 South, Range 67 West (Adams County):
Section 7: W/2, W/2E/2
Section 18: W/2, W/2E/2
Section 19: N/2NW/4, NW/4NE/4

Total Acres: 1080 ac

The 30 day notification time period has passed and we have not yet received any objections to such well locations or proposed spacing unit, therefore Great Western hereby requests the Director to approve the above mentioned well. Great Western respectfully requests the COGCC review the enclosed map illustrating the proposed wellbore spacing unit.

Respectfully,

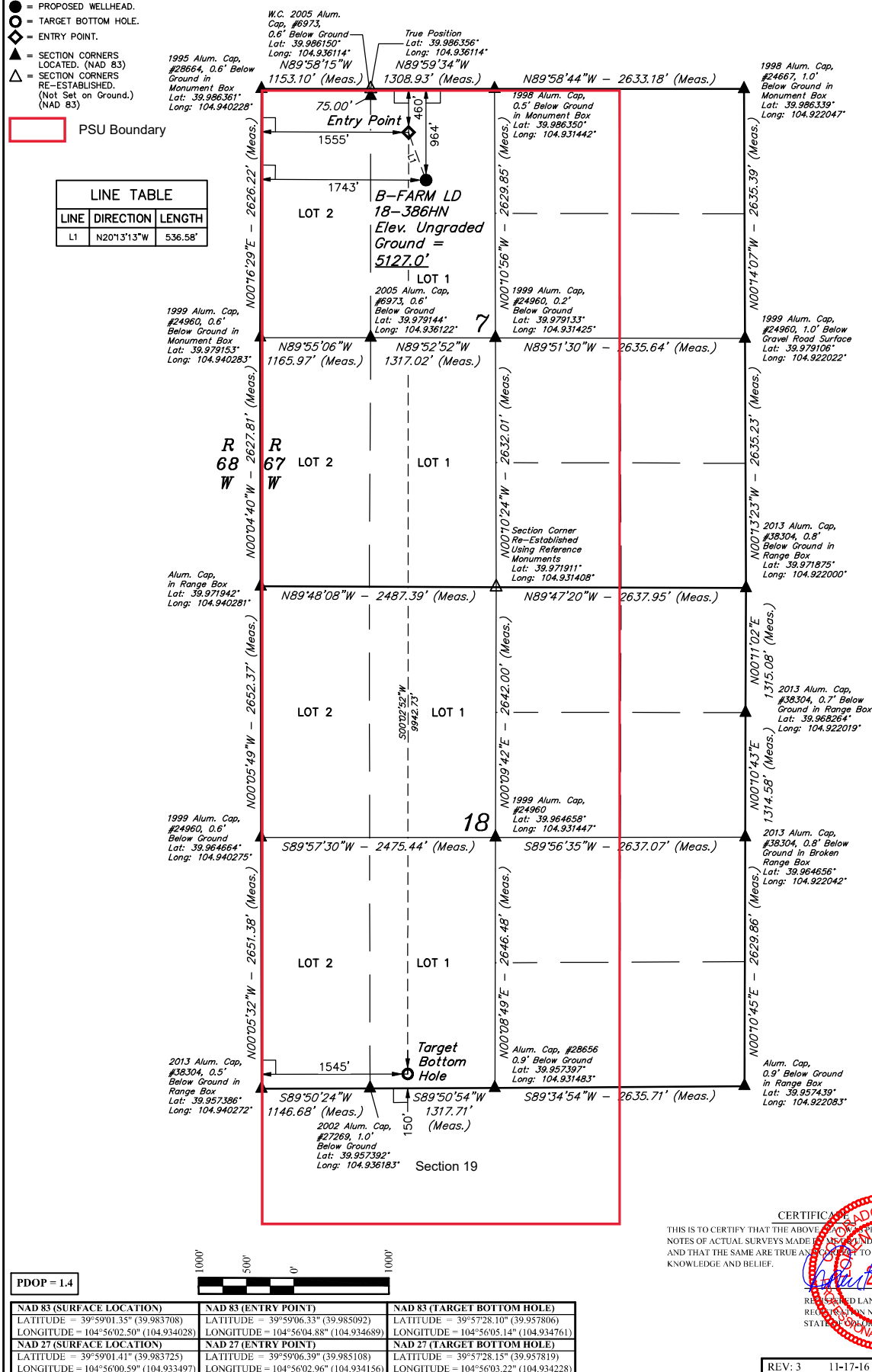
Geoff Lee

Geoff Lee
Regulatory Analyst
Great Western Operating Company, LLC

T1S, R67W, 6th P.M.

-
- PSU Boundary

LINE TABLE		
LINE	DIRECTION	LENGTH
L1	N20°13'13"W	536.58'



CERTIFICATE

THIS IS TO CERTIFY THAT THE ABOVE AND ENCLOSED PAPERS AND NOTES OF ACTUAL SURVEYS MADE BY ME OR UNDER MY SUPERVISION AND THAT THE SAME ARE TRUE AND CORRECT TO THE BEST OF MY KNOWLEDGE AND BELIEF.

CERTIFICATE OF SURVEY

THE ABOVE MAP WAS PREPARED BY ME OR UNDER MY SUPERVISION AND I AM A TRUE AND CORRECT COPY TO THE BEST OF MY KNOWLEDGE.

REGISTERED LAND SURVEYOR
REGISTRATION NO. 28285
STATE OF CALIFORNIA

REV: 3 11-17-16 D.COX (MOVE EP)

BASIS OF BEARINGS

BASIS OF ELEVATION
USGS COOPERATIVE BASE NETWORK CONTROL STATION, DESIGNATION "JR 53 5026"
NGS DATA SHEET LISTS THE NAVD 88 ELEVATION AS BEING 5028 FEET.



UELS, LLC
Corporate Office * 85 South 200 East
Vernal, UT 84078 * (435) 789-1017



GREAT WESTERN OPERATING COMPANY

B-FARM LD 18-386HN
NE 1/4 NW 1/4, SECTION 7, T1S, R67W, 6th P.M.
ADAMS COUNTY, COLORADO

SURVEYED BY	DALLAS NIELSEN, G.W.	03-24-16	SCALE
DRAWN BY	M.F.D.	03-31-16	1" = 1000'

WELL LOCATION PLAT