



# Kerr-McGee Oil & Gas Onshore LP

A subsidiary of Anadarko Petroleum Corporation

1099 18<sup>th</sup> Street  
Denver, CO 80202  
720-929-6000

July 16, 2018

Julie Murphy  
Director, Colorado Oil and Gas Conservation Commission  
Department of Natural Resources  
The Chancery Building  
1120 Lincoln Street, Suite 801  
Denver, CO 80203

Re: **30 Day Certification Letter - 318A.e**  
BEIERLE 26-11HZ (Doc No. 401657823)  
Township 1 North, Range 66 West  
Section 26: NWNE  
Unit Acreage: 240 Acres  
Unit Spacing: 01N-R66W; SEC 14: SWSE;  
01N-R66W; SEC 23: W2E2;  
01N-R66W; SEC 26: NWNE  
Weld County, Colorado

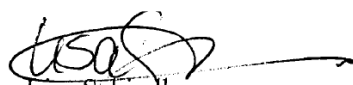
Dear Director Murphy:

Kerr-McGee Oil and Gas Onshore LP ("KMG") hereby certifies that a thirty (30) day notice has been given by certified mail to all mineral owners in the proposed wellbore spacing unit. We have not received any objections to such well location, proposed spacing unit, or additional producing formation. KMG hereby respectfully requests approval of this boundary well.

If there are any questions or issues regarding this permit, please contact Lisa Schindler at (720) 929-3091.

Sincerely,

**Kerr-McGee Oil and Gas Onshore LP**

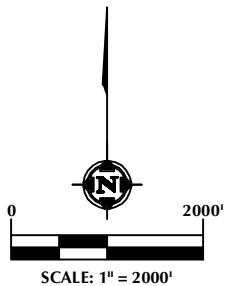
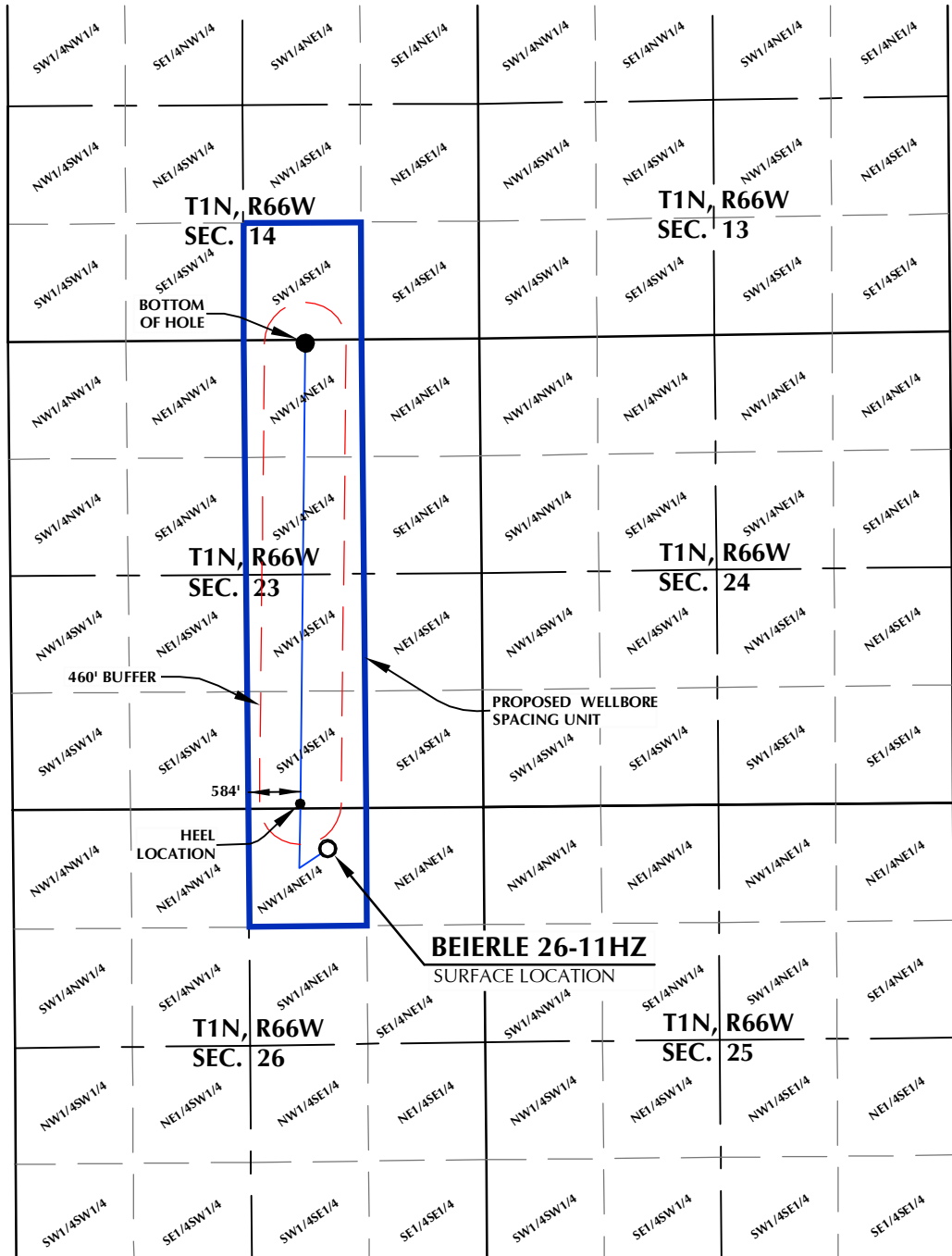
  
Lisa Schindler  
Sr. Regulatory Analyst

Enclosure

DISTANCE FROM COMPLETED  
PORTION OF WELLBORE TO  
NEAREST UNIT BOUNDARY= 584'

# BEIERLE 26-11HZ WELLBORE SPACING UNIT

SURFACE LOCATION: NAD 83  
GROUND ELEVATION= 5120.9'  
LATITUDE= 40.028280°  
LONGITUDE= -104.741242°  
LATITUDE= 40°01'41.807"  
LONGITUDE= -104°44'28.472"  
HEEL LOCATION: NAD 83  
LATITUDE= 40.029676°  
LONGITUDE= -104.742331°  
LATITUDE= 40°01'46.833"  
LONGITUDE= -104°44'32.391"  
BOTTOM HOLE LOCATION: NAD 83  
LATITUDE= 40.043908°  
LONGITUDE= -104.741966°  
LATITUDE= 40°02'38.069"  
LONGITUDE= -104°44'31.078"



## NOTES:

1. DRAWING LATITUDE AND LONGITUDE COORDINATES ARE NAD 83 (2011)(EPOCH:2010).
2. ELEVATION BASED ON NAVD88 (GEOID12B).
3. BASIS OF BEARING DERIVED FROM COLORADO COORDINATE SYSTEM OF 1983 NORTH ZONE.
4. ALL MEASURED DISTANCES ARE GRID. COMBINED SCALE FACTOR: .99972212 CALCULATED FROM THE N. 1/4 CORNER OF SECTION 26, T1N, R66W.

## WELL PAD - BEIERLE 2-26HZ

BEIERLE 26-11HZ  
WELLBORE SPACING UNIT  
460' FNL & 1759' FEL NWNE (SURFACE)  
LOCATED IN SECTION 26  
48' FSL & 2064' FEL SWSE (HEEL)  
32' FNL & 1961' FEL NWNE (BOTTOM)  
LOCATED IN SECTION 23  
T1N, R66W, 6TH P.M.  
WELD COUNTY, COLORADO

**Kerr-McGee Oil &  
Gas Onshore L.P.**  
1099 18th Street  
Denver, Colorado 80202



## CONSULTING, LLC

SHERIDAN OFFICE  
1095 Saberton Avenue  
Sheridan, Wyoming 82801  
Phone 307-674-0609

LOVELAND OFFICE  
1635 Foxtrail Drive, Suite 204  
Loveland, Colorado 80538  
Phone 970-776-4331

DRAFTED BY:	MDB	CHECKED BY:	RKF
DATE DRAFTED:	5/23/18	DATE SURVEYED:	5/7/18
REVISED:		FILE NAME:	17-102