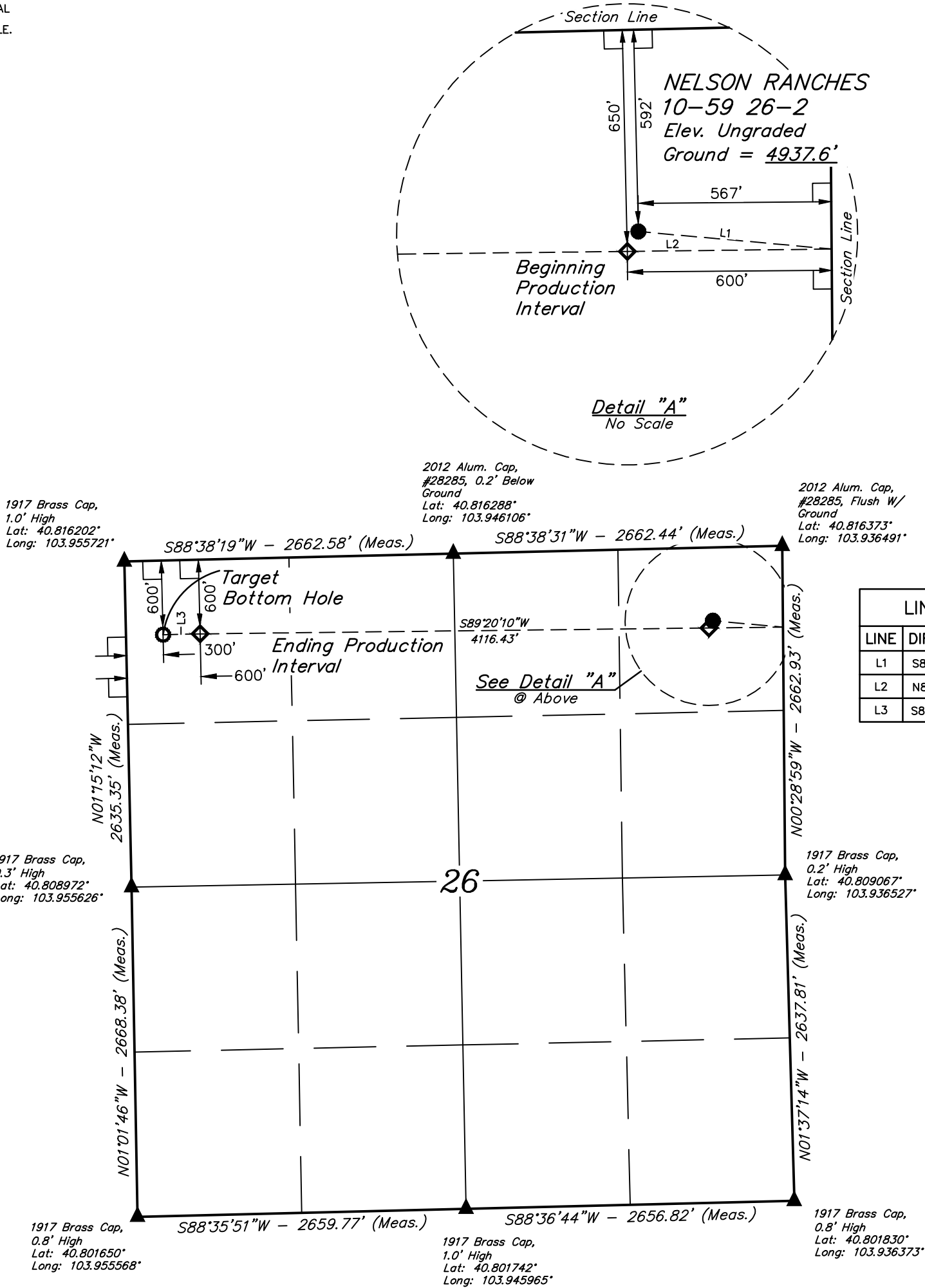


LEGEND:

- └─ = 90° SYMBOL
● = PROPOSED WELLHEAD.
◇ = PRODUCTION INTERVAL
○ = TARGET BOTTOM HOLE.
▲ = SECTION CORNERS LOCATED. (NAD 83)

T10N, R59W, 6th P.M.



| |
|---|
| SURFACE LOCATION 592' FNL 567' FEL |
| NAD 83 (SURFACE LOCATION) |
| LATITUDE = 40°48'53.03" (40.814730°) |
| LONGITUDE = 103°56'18.77" (103.938546°) |
| NAD 27 (SURFACE LOCATION) |
| LATITUDE = 40°48'53.08" (40.814743°) |
| LONGITUDE = 103°56'16.96" (103.938043°) |
| STATE PLANE NAD 83 (CO. NORTH) |
| N: 1543458.72' E: 3432198.08' |
| STATE PLANE NAD 27 (CO. NORTH) |
| N: 543456.71' E: 2432348.84' |

PDOP = 1.4



| | | |
|--|---|---|
| BEGINNING PRODUCTION INTERVAL 650' FNL 600' FEL | ENDING PRODUCTION INTERVAL 600' FNL 600' FWL | TARGET BOTTOM HOLE 600' FNL 300' FWL |
| NAD 83 (BEG. PROD. INTERVAL) | NAD 83 (ENDING PROD. INTERVAL) | NAD 83 (TARGET BOTTOM HOLE) |
| LATITUDE = 40°48'52.45" (40.814571°) | LATITUDE = 40°48'52.47" (40.814576°) | LATITUDE = 40°48'52.44" (40.814566°) |
| LONGITUDE = 103°56'19.20" (103.938667°) | LONGITUDE = 103°57'12.72" (103.953533°) | LONGITUDE = 103°57'16.62" (103.954616°) |
| NAD 27 (BEG. PROD. INTERVAL) | NAD 27 (ENDING PROD. INTERVAL) | NAD 27 (TARGET BOTTOM HOLE) |
| LATITUDE = 40°48'52.50" (40.814584°) | LATITUDE = 40°48'52.52" (40.814589°) | LATITUDE = 40°48'52.49" (40.814579°) |
| LONGITUDE = 103°56'17.39" (103.938163°) | LONGITUDE = 103°57'10.91" (103.953030°) | LONGITUDE = 103°57'14.81" (103.954113°) |
| STATE PLANE NAD 83 (CO. NORTH) | STATE PLANE NAD 83 (CO. NORTH) | STATE PLANE NAD 83 (CO. NORTH) |
| N: 1543400.11' E: 3432165.85' | N: 1543329.79' E: 3428051.35' | N: 1543321.03' E: 3427751.57' |
| STATE PLANE NAD 27 (CO. NORTH) | STATE PLANE NAD 27 (CO. NORTH) | STATE PLANE NAD 27 (CO. NORTH) |
| N: 543398.10' E: 2432316.61' | N: 543327.74' E: 2428202.04' | N: 543318.97' E: 2427902.26' |

CERTIFICATE OF SURVEY
THIS IS TO CERTIFY THAT THE ABOVE AND ANY PREPARED FROM FIELD
NOTES OF ACTUAL SURVEYS MADE BY ME OR UNDER MY SUPERVISION
AND THAT THE SAME ARE TRUE AND CORRECT TO THE BEST OF MY
KNOWLEDGE AND BELIEF.



REV: 1 06-04-18 C.IVIE (BPI MOVE)

BASIS OF BEARINGS
TRANSVERSE MERCATOR PROJECTION
WITH A CENTRAL MERIDIAN OF W105°00'00".

BASIS OF ELEVATION
OPUS SOLUTION GENERATED NAVD 88



UELS, LLC
Corporate Office * 85 South 200 East
Vernal, UT 84078 * (435) 789-1017



BISON OIL & GAS II

NELSON RANCHES 10-59 26-2
NE 1/4 NE 1/4, SECTION 26, T10N, R59W, 6th P.M.
WELD COUNTY, COLORADO

| | | | |
|-------------|------------------------|----------|------------|
| SURVEYED BY | JAMES FRESHWATER, N.W. | 04-06-18 | SCALE |
| DRAWN BY | C.IVIE | 04-10-18 | 1" = 1000' |

WELL LOCATION PLAT