

Crestone Peak Resources

DJ BASIN

S21-T2N-R68W

DREAM WEAVER South 3D-21H-N268

OH

PLAN #1

Anticollision Summary Report

17 April, 2018

Cathedral Energy Services

Anticollision Summary Report

Company:	Crestone Peak Resources	Local Co-ordinate Reference:	Well DREAM WEAVER South 3D-21H-N268 - Slot DREAM WEAVER South 3D-21H-N268 SHL
Project:	DJ BASIN	TVD Reference:	23' KB @ 4924.00usft (Original Well Elev)
Reference Site:	S21-T2N-R68W	MD Reference:	23' KB @ 4924.00usft (Original Well Elev)
Site Error:	0.00 usft	North Reference:	True
Reference Well:	DREAM WEAVER South 3D-21H-N268	Survey Calculation Method:	Minimum Curvature
Well Error:	0.00 usft	Output errors are at	2.00 sigma
Reference Wellbore	OH	Database:	USA EDM 5000 Multi Users DB
Reference Design:	PLAN #1	Offset TVD Reference:	Offset Datum

Reference	PLAN #1		
Filter type:	NO GLOBAL FILTER: Using user defined selection & filtering criteria		
Interpolation Method:	MD Interval 100.00usft	Error Model:	ISCWSA
Depth Range:	Unlimited	Scan Method:	Closest Approach 3D
Results Limited by:	Maximum center-center distance of 2,237.05 usft	Error Surface:	Pedal Curve
Warning Levels Evaluated at:	2.00 Sigma	Casing Method:	Not applied

Survey Tool Program	Date	3/22/2018		
From (usft)	To (usft)	Survey (Wellbore)	Tool Name	Description
0.00	2,000.00	PLAN #1 (OH)	VESSI_GYROFLEX	VESSI Gyroflex Gyro
2,001.00	19,150.03	PLAN #1 (OH)	MWD+HDGM	OWSG MWD + HDGM

Summary						
Site Name	Reference Measured Depth (usft)	Offset Measured Depth (usft)	Distance Between Centres (usft)	Distance Between Ellipses (usft)	Separation Factor	Warning
S21-T2N-R68W						
DREAM WEAVER North 3A-21H-N268 - OH - PLAN #1	682.41	661.25	149.64	147.43	67.776	CC, ES
DREAM WEAVER North 3A-21H-N268 - OH - PLAN #1	8,700.00	7,373.56	840.65	787.46	15.804	SF
DREAM WEAVER North 3B-21H-N268 - OH - PLAN #1	798.24	783.25	112.15	109.54	42.899	CC, ES
DREAM WEAVER North 3B-21H-N268 - OH - PLAN #1	8,600.00	7,455.03	593.85	542.57	11.579	SF
DREAM WEAVER North 3C-21H-N268 - OH - PLAN #1	857.59	843.69	90.78	87.96	32.192	CC, ES
DREAM WEAVER North 3C-21H-N268 - OH - PLAN #1	8,200.00	7,615.09	407.24	361.44	8.891	SF
DREAM WEAVER North 3D-21H-N268 - OH - PLAN #1	906.93	894.55	69.90	66.91	23.382	CC, ES
DREAM WEAVER North 3D-21H-N268 - OH - PLAN #1	8,100.00	7,773.45	181.73	136.30	4.000	SF
DREAM WEAVER North 3E-21H-N268 - OH - PLAN #1	933.74	922.70	53.17	50.09	17.262	CC, ES
DREAM WEAVER North 3E-21H-N268 - OH - PLAN #1	7,511.93	8,203.69	132.32	86.73	2.902	SF
DREAM WEAVER North 3F-21H-N268 - OH - PLAN #1	938.44	928.60	41.03	37.94	13.258	CC, ES
DREAM WEAVER North 3F-21H-N268 - OH - PLAN #1	8,320.31	7,614.54	256.50	210.15	5.534	SF
DREAM WEAVER North 3G-21H-N268 - OH - PLAN #1	926.43	918.11	32.64	29.59	10.681	CC, ES, SF
DREAM WEAVER North 3H-21H-N268 - OH - PLAN #1	874.72	867.97	30.10	27.22	10.460	CC, ES
DREAM WEAVER North 3H-21H-N268 - OH - PLAN #1	900.00	892.91	30.27	27.30	10.187	SF
DREAM WEAVER North 3I-21H-N268 - OH - PLAN #1	607.87	606.74	20.81	18.87	10.746	CC, ES, SF
DREAM WEAVER North 3J-21H-N268 - OH - PLAN #1	566.56	565.64	19.77	17.99	11.056	CC, ES, SF
DREAM WEAVER North 3K-21H-N268 - OH - PLAN #1	488.82	488.55	22.22	20.71	14.688	CC, ES
DREAM WEAVER North 3K-21H-N268 - OH - PLAN #1	500.00	499.31	22.45	20.89	14.428	SF
DREAM WEAVER South 3A-21H-N268 - OH - PLAN #1	103.42	103.42	36.43	36.28	245.479	CC, ES
DREAM WEAVER South 3A-21H-N268 - OH - PLAN #1	19,150.03	19,287.83	649.95	277.23	1.744	SF
DREAM WEAVER South 3B-21H-N268 - OH - PLAN #1	103.46	103.46	24.29	24.14	163.489	CC
DREAM WEAVER South 3B-21H-N268 - OH - PLAN #1	19,150.03	19,365.08	267.70	-64.47	0.806	Level 1, ES, SF
DREAM WEAVER South 3C-21H-N268 - OH - PLAN #1	103.86	103.86	12.14	11.99	80.961	CC
DREAM WEAVER South 3C-21H-N268 - OH - PLAN #1	19,150.03	19,090.64	352.70	-10.21	0.972	Level 1, ES, SF
DREAM WEAVER South 3E-21H-N268 - OH - PLAN #1	200.00	200.00	12.14	11.65	24.766	CC
DREAM WEAVER South 3E-21H-N268 - OH - PLAN #1	18,603.82	18,477.21	245.45	-87.75	0.737	Level 1, SF
DREAM WEAVER South 3E-21H-N268 - OH - PLAN #1	18,700.00	18,573.32	248.32	-88.23	0.738	Level 1, ES
DREAM WEAVER South 3F-21H-N268 - OH - PLAN #1	200.00	200.00	24.29	23.80	49.531	CC, ES
DREAM WEAVER South 3F-21H-N268 - OH - PLAN #1	18,700.00	18,788.12	451.36	103.77	1.299	Level 3, SF
DREAM WEAVER South 3G-21H-N268 - OH - PLAN #1	200.00	200.00	36.43	35.94	74.295	CC, ES
DREAM WEAVER South 3G-21H-N268 - OH - PLAN #1	18,700.00	18,648.99	617.87	259.38	1.724	SF
DREAM WEAVER South 3H-21H-N268 - OH - PLAN #1	200.00	200.00	48.57	48.08	99.060	CC, ES
DREAM WEAVER South 3H-21H-N268 - OH - PLAN #1	18,700.00	18,556.61	800.58	445.24	2.253	SF

CC - Min centre to center distance or convergent point, SF - min separation factor, ES - min ellipse separation

Cathedral Energy Services

Anticollision Summary Report

Company:	Crestone Peak Resources	Local Co-ordinate Reference:	Well DREAM WEAVER South 3D-21H-N268 - Slot DREAM WEAVER South 3D-21H-N268 SHL
Project:	DJ BASIN	TVD Reference:	23' KB @ 4924.00usft (Original Well Elev)
Reference Site:	S21-T2N-R68W	MD Reference:	23' KB @ 4924.00usft (Original Well Elev)
Site Error:	0.00 usft	North Reference:	True
Reference Well:	DREAM WEAVER South 3D-21H-N268	Survey Calculation Method:	Minimum Curvature
Well Error:	0.00 usft	Output errors are at	2.00 sigma
Reference Wellbore	OH	Database:	USA EDM 5000 Multi Users DB
Reference Design:	PLAN #1	Offset TVD Reference:	Offset Datum

Summary						
Site Name Offset Well - Wellbore - Design	Reference Measured Depth (usft)	Offset Measured Depth (usft)	Distance Between Centres (usft)	Distance Between Ellipses (usft)	Separation Factor	Warning
S21-T2N-R68W						
DREAM WEAVER South 3I-21H-N268 - OH - PLAN #1	200.00	201.00	60.71	60.22	123.379	CC, ES
DREAM WEAVER South 3I-21H-N268 - OH - PLAN #1	18,800.00	18,753.41	1,236.89	875.89	3.426	SF
DREAM WEAVER South 3J-21H-N268 - OH - PLAN #1	200.00	201.00	72.86	72.37	148.056	CC, ES
DREAM WEAVER South 3J-21H-N268 - OH - PLAN #1	18,800.00	18,900.20	1,418.67	1,058.86	3.943	SF
DREAM WEAVER South 3K-21H-N268 - OH - PLAN #1	200.36	201.38	85.00	84.51	172.271	CC, ES
DREAM WEAVER South 3K-21H-N268 - OH - PLAN #1	19,000.00	19,076.22	1,611.43	1,244.86	4.396	SF

Cathedral Energy Services

Anticollision Summary Report

Company:	Crestone Peak Resources	Local Co-ordinate Reference:	Well DREAM WEAVER South 3D-21H-N268 - Slot DREAM WEAVER South 3D-21H-N268 SHL
Project:	DJ BASIN	TVD Reference:	23' KB @ 4924.00usft (Original Well Elev)
Reference Site:	S21-T2N-R68W	MD Reference:	23' KB @ 4924.00usft (Original Well Elev)
Site Error:	0.00 usft	North Reference:	True
Reference Well:	DREAM WEAVER South 3D-21H-N268	Survey Calculation Method:	Minimum Curvature
Well Error:	0.00 usft	Output errors are at	2.00 sigma
Reference Wellbore	OH	Database:	USA EDM 5000 Multi Users DB
Reference Design:	PLAN #1	Offset TVD Reference:	Offset Datum

Summary						
Site Name Offset Well - Wellbore - Design	Reference Measured Depth (usft)	Offset Measured Depth (usft)	Distance Between Centres (usft)	Distance Between Ellipses (usft)	Separation Factor	Warning
S21-T2N-R68W (OFFSETS)						
ARTHUR STROMQUIST 2 - KMG WELL - GYRO	6,813.23	6,653.64	1,680.66	1,649.54	54.019	CC, ES
ARTHUR STROMQUIST 2 - KMG WELL - GYRO	7,000.00	6,841.75	1,703.77	1,671.62	52.982	SF
BLISS 41-21 - KPK WELL - SURVEYS						Out of range
BOULDER CREEK 9-4K8 - SNYDER OIL - NO SURVEY						Out of range
BROWN C UNIT 1 - CPR WELL - GYRO						Out of range
CANINO 1 - HUGHES C W-SOTEXCO 1 - NO SURVEY						Out of range
CHAMPLIN 41-4/1-68/ 1 - KMG WELL - NO SURVEYS						Out of range
CHAMPLIN 86 AMOCO B 2 - KPK WELL - NO SURVEY						Out of range
CHAMPLIN 86 AMOCO UT/Q 1 - KMG WELL - GYRO						Out of range
CHAMPLIN 86 AMOCO-B 1 - KPK WELL - NO SURVEY						Out of range
CHAMPLIN 86 AMOCO-B 3 - KPK WELL - NO SURVEY						Out of range
CHAMPLIN 86 AMOCO-B 4 - KPK WELL - NO SURVEY						Out of range
CHAMPLIN 86 AMOCO-B 5 - KPK WELL - NO SURVEY						Out of range
CHAMPLIN 86 AMOCO-B 6 - KPK WELL - NO SURVEY						Out of range
CHAMPLIN 86 AMOCO-F 5 - KPK WELL - NO SURVEY						Out of range
CHAMPLIN 86 AMOCO-O 9 - KMG WELL - GYRO	19,150.03	7,534.26	1,808.62	1,752.65	32.315	CC, ES, SF
CHAMPLIN32-4/1-68/ 2 - KMG WELL - NO SURVEYS						Out of range
CHMPLN 86 AMOCO-F 1 - KPK WELL - NO SURVEYS						Out of range
COLCLASURE 42-21 - KPK WELL - NO SURVEYS						Out of range
COOLEY 11-16 - KMG WELL - SURVEYS						Out of range
COOLEY 12-16 - KMG WELL - SURVEYS						Out of range
COOLEY 13-16 - KMG WELL - SURVEYS						Out of range
COOLEY 14-16 - KMG WELL - SURVEYS						Out of range
COOLEY 22-16 - KMG WELL - SURVEYS						Out of range
COOLEY 23-16 - KMG WELL - SURVEYS						Out of range
COOLEY 35-16 - KMG WELL - SURVEYS						Out of range
COPPER 31-15 - KMG WELL - SURVEYS						Out of range
CPC 31-4 (1-68) 3 - ANADARKO WELL - NO SURVEYS						Out of range
CPC 42-4 (1-68) 4 - ANADARKO WELL - NO SURVEYS						Out of range
DOMENICO 1 - NOBLE WELL - GYRO						Out of range
DUCKWORTH 31-16 - CPR WELL - GYRO						Out of range
DUCKWORTH 32-16 - CPR WELL - SURVEYS						Out of range
DUCKWORTH 33-16 - CPR WELL - SURVEYS						Out of range
DUCKWORTH 41-16 - CPR WELL - SURVEYS						Out of range
DUCKWORTH 43-16 - CPR WELL - GYRO						Out of range
DUCKWORTH 44-16 - CPR WELL - SURVEYS						Out of range
DUCKWORTH 6-0-16 - CPR WELL - SURVEYS						Out of range
DUCKWORTH B UNIT 1 - CPR WELL - GYRO						Out of range
DUCKWORTH B UNIT 2 - CPR WELL - GYRO						Out of range
EAST RINN 0-4-15 - CPR WELL - SURVEYS						Out of range
EAST RINN 13-15 - CPR WELL - SURVEYS						Out of range
EDITH ANN 1 - CPR WELL - GYRO						Out of range
EDITH ANN 33-21 - CPR WELL - GYRO	949.93	943.73	1,661.62	1,658.47	527.772	CC, ES
EDITH ANN 33-21 - CPR WELL - GYRO	7,100.00	6,991.67	2,217.35	2,184.57	67.652	SF
EDITH ANN 34-21 - CPR WELL - GYRO	205.86	201.71	1,339.16	1,338.65	2,632.279	CC, ES
EDITH ANN 34-21 - CPR WELL - GYRO	9,000.00	7,381.65	2,230.88	2,188.47	52.597	SF
EDITH ANN 4-21 - CPR WELL - SURVEYS						Out of range
EDITH ANN 44-21 - CPR WELL - GYRO						Out of range
EDITH ANN 6-8-21 - CPR WELL - SURVEYS						Out of range
EDITH ANN 8-8-21 - CPR WELL - SURVEYS						Out of range
EDITH ANN-DUCKWORTH 4A-21H-O268 - CPR - FINAL	7,100.00	8,644.56	1,823.75	1,776.57	38.656	SF

CC - Min centre to center distance or convergent point, SF - min separation factor, ES - min ellipse separation

Cathedral Energy Services

Anticollision Summary Report

Company:	Crestone Peak Resources	Local Co-ordinate Reference:	Well DREAM WEAVER South 3D-21H-N268 - Slot DREAM WEAVER South 3D-21H-N268 SHL
Project:	DJ BASIN	TVD Reference:	23' KB @ 4924.00usft (Original Well Elev)
Reference Site:	S21-T2N-R68W	MD Reference:	23' KB @ 4924.00usft (Original Well Elev)
Site Error:	0.00 usft	North Reference:	True
Reference Well:	DREAM WEAVER South 3D-21H-N268	Survey Calculation Method:	Minimum Curvature
Well Error:	0.00 usft	Output errors are at	2.00 sigma
Reference Wellbore	OH	Database:	USA EDM 5000 Multi Users DB
Reference Design:	PLAN #1	Offset TVD Reference:	Offset Datum

Summary						
Site Name Offset Well - Wellbore - Design	Reference Measured Depth (usft)	Offset Measured Depth (usft)	Distance Between Centres (usft)	Distance Between Ellipses (usft)	Separation Factor	Warning
S21-T2N-R68W (OFFSETS)						
EDITH ANN-DUCKWORTH 4A-21H-O268 - CPR - FINAL	7,451.89	8,428.06	1,806.55	1,761.66	40.245	CC, ES
EDITH ANN-DUCKWORTH 4B-21H-O268 - CPR - FINAL	7,100.00	8,922.31	2,172.64	2,121.35	42.359	SF
EDITH ANN-DUCKWORTH 4B-21H-O268 - CPR - FINAL	7,300.00	8,795.85	2,165.20	2,115.26	43.358	ES
EDITH ANN-DUCKWORTH 4B-21H-O268 - CPR - FINAL	7,305.10	8,791.90	2,165.19	2,115.31	43.402	CC
EDITH ANN-DUCKWORTH 4C-21H-O268 - CPR - FINA	267.58	336.30	2,193.05	2,192.15	2,434.886	CC
EDITH ANN-DUCKWORTH 4C-21H-O268 - CPR - FINA	300.00	371.10	2,193.16	2,192.14	2,153.935	ES
EDITH ANN-DUCKWORTH 4C-21H-O268 - CPR - FINA	1,100.00	1,281.33	2,236.42	2,232.32	546.309	SF
EDITH ANN-DUCKWORTH 4D-21H-O268 - CPR - FINA	0.00	28.67	2,206.18			
EDITH ANN-DUCKWORTH 4D-21H-O268 - CPR - FINA	700.00	796.17	2,233.65	2,231.15	894.714	SF
EDITH ANN-DUCKWORTH 4E-21H-O268 - CPR - FINAL	213.13	251.21	2,228.15	2,227.49	3,403.473	CC, ES
EDITH ANN-DUCKWORTH 4E-21H-O268 - CPR - FINAL	400.00	446.26	2,232.36	2,231.03	1,678.948	SF
EDITH ANN-DUCKWORTH 4F-21H-O268 - CPR - FINAL						Out of range
EDITH ANN-DUCKWORTH 4G-21H-O268 - CPR - FINA						Out of range
EDITH ANN-DUCKWORTH 4H-21H-O268 - CPR - FINA						Out of range
ERIE CORP 42-4 - KMG WELL - NO SURVEYS						Out of range
EVERIST 12-10 - KMG WELL - SURVEYS						Out of range
EVERIST 12-10X - KMG WELL - NO SURVEYS						Out of range
EVERIST 13-10 - KMG WELL - SURVEYS						Out of range
EVERIST 33-10 - KMG WELL - SURVEYS						Out of range
FAIRVIEW 1 - EXTRACTION WELL - NO SURVEYS						Out of range
FAIRVIEW 3 - EXTRACTION O&G LLC - SURVEYS						Out of range
FAIRVIEW 4 - EXTRACTION O&G LLC - SURVEYS						Out of range
FAIRVIEW 5 - EXTRACTION O&G LLC - SURVEYS						Out of range
FILE 1-17 - CPR WELL - SURVEYS						Out of range
FILE 31-17 - CPR WELL - SURVEYS						Out of range
FILE 32-17 - CPR WELL - SURVEYS						Out of range
FILE 41-17 - CPR WELL - SURVEYS						Out of range
FILE 42-17 - CPR WELL - NO SURVEYS						Out of range
FILE 4-2-17 - CPR WELL - SURVEYS						Out of range
FILE 42-17X - CPR WELL - SURVEYS						Out of range
FILE 6-0-17 - CPR WELL - SURVEYS						Out of range
FILE 8-2-17 - CPR WELL - SURVEYS						Out of range
FREDERICKS 13-27 - KMG WELL - NO SURVEYS						Out of range
FREDERICKS 13-27X - KMG WELL - SURVEYS						Out of range
GARVER U 34-5JI - KMG WELL - NO SURVEYS						Out of range
HINGLEY 1 - KPK WELL - NO SURVEYS						Out of range
HINGLEY 2 - KPK WELL - NO SUREYS						Out of range
HSR-STROMQUIST 14-21 - KMG WELL - GYRO	2,279.92	2,237.06	175.15	167.59	23.187	CC
HSR-STROMQUIST 14-21 - KMG WELL - GYRO	2,300.00	2,256.73	175.18	167.57	23.025	ES
HSR-STROMQUIST 14-21 - KMG WELL - GYRO	7,900.00	7,393.99	538.42	503.66	15.490	SF
JACK A MLEYNEK 2 - KPK WELL - NO SURVEYS						Out of range
JACK MLEYNEK 1 - KPK WELL - NO SURVEYS						Out of range
JACK MLEYNEK 3 - KPK WELL - NO SURVEYS						Out of range
JACK MLEYNEK 4 - KPK WELL - NO SURVEYS						Out of range
JACK MLEYNEK 5 - KPK WELL - NO SURVEYS						Out of range
JILLSON 0-6-22 - CPR WELL - SURVEYS						Out of range
JILLSON 1 - KPK WELL - NO SURVEYS						Out of range
JILLSON 11-22 - CPR WELL - GYRO						Out of range
JILLSON 12-22 - CPR WELL - GYRO						Out of range
JILLSON 14-22 - CPR WELL - GYRO						Out of range
JILLSON 3 - KPK WELL - NO SURVEYS						Out of range

CC - Min centre to center distance or covergent point, SF - min separation factor, ES - min ellipse separation

Cathedral Energy Services

Anticollision Summary Report

Company:	Crestone Peak Resources	Local Co-ordinate Reference:	Well DREAM WEAVER South 3D-21H-N268 - Slot DREAM WEAVER South 3D-21H-N268 SHL
Project:	DJ BASIN	TVD Reference:	23' KB @ 4924.00usft (Original Well Elev)
Reference Site:	S21-T2N-R68W	MD Reference:	23' KB @ 4924.00usft (Original Well Elev)
Site Error:	0.00 usft	North Reference:	True
Reference Well:	DREAM WEAVER South 3D-21H-N268	Survey Calculation Method:	Minimum Curvature
Well Error:	0.00 usft	Output errors are at	2.00 sigma
Reference Wellbore	OH	Database:	USA EDM 5000 Multi Users DB
Reference Design:	PLAN #1	Offset TVD Reference:	Offset Datum

Summary						
Site Name Offset Well - Wellbore - Design	Reference Measured Depth (usft)	Offset Measured Depth (usft)	Distance Between Centres (usft)	Distance Between Ellipses (usft)	Separation Factor	Warning
S21-T2N-R68W (OFFSETS)						
JILLSON 5 - KPK WELL - NO SURVEYS						Out of range
JILLSON A 1 - KPK WELL - NO SURVEYS	200.00	175.99	1,454.48	1,453.94	2,647.727	CC, ES
JILLSON A 1 - KPK WELL - NO SURVEYS	5,200.00	5,099.62	2,225.53	2,204.14	104.037	SF
JILLSON A 2 - KPK WELL - NO SURVEYS	914.05	882.76	1,691.57	1,688.49	549.696	CC, ES
JILLSON A 2 - KPK WELL - NO SURVEYS	5,500.00	5,394.76	2,115.84	2,091.69	87.604	SF
JILLSON A 3 - KPK WELL - NO SURVEYS						Out of range
JILLSON A 4 - KPK WELL - NO SURVEYS						Out of range
JILLSON-EAST RINN 3A-22H-M268 - CPR WELL - SUR						Out of range
JILLSON-EAST RINN 3B-22H-M268 - CPR WELL - SUR						Out of range
JILLSON-EAST RINN 3C-22H-M268 - CPR WELL - SUR						Out of range
KENNEDY 1 - MACEY & MERSHON WELL - NO SURVE						Out of range
KENNEDY 31-21 - CPR WELL - GYRO						Out of range
KENNEDY 32-21 - CPR WELL - GYRO						Out of range
KENNEDY 41-21 - CPR WELL - GYRO						Out of range
KENNEDY 4-2-21 - CPR WELL - SURVEYS						Out of range
KENNEDY 6-0-21 - CPR WELL - SURVEYS						Out of range
KENNEDY 6-4-21 - CPR WELL - SURVEYS						Out of range
KENNEDY 8-0-21 - CPR WELL - SURVEYS						Out of range
KENNEDY GAS UNIT 1 - CPR WELL - GYRO						Out of range
LONGMONT 8-10K - TOP OPERATING WELL - NO SUR						Out of range
LONGMONT FARMS 1 - KPK WELL - NO SURVEYS						Out of range
LONGMONT FARMS 3 - KPK WELL - NO SURVEYS						Out of range
MAX SERAFINI 1 - KPK WELL - NO SURVEYS						Out of range
MAX SERAFINI C 1 - KPK WELL - NO SURVEYS						Out of range
MILES 1 - KPK WELL - NO SURVEYS						Out of range
MILES 33-3M - KMG WELL - GYRO	15,251.17	7,495.76	567.14	428.88	4.102	CC, ES, SF
MILES 4 - KPK WELL - NO SURVEYS						Out of range
MILES 5 - KPK WELL - NO SURVEYS						Out of range
MILES JOSEPHINE 1 - KPK WELL - NO SURVEYS						Out of range
MILES JOSEPHINE 2 - KPK WELL - NO SURVEYS						Out of range
MILES JOSEPHINE B 1 - KPK WELL - NO SURVEYS						Out of range
MILLER 12-27 - CPR WELL - GYRO						Out of range
MILTON NELSON 1 - KPK WELL - NO SURVEYS	3,444.66	3,377.70	729.82	715.15	49.773	CC
MILTON NELSON 1 - KPK WELL - NO SURVEYS	3,600.00	3,530.52	730.35	714.74	46.787	ES
MILTON NELSON 1 - KPK WELL - NO SURVEYS	5,100.00	4,960.00	789.14	764.22	31.664	SF
MILTON NELSON UN-C 1 - KPK WELL - NO SURVEYS	3,626.75	3,561.84	1,026.95	1,011.15	65.022	CC
MILTON NELSON UN-C 1 - KPK WELL - NO SURVEYS	3,800.00	3,732.28	1,027.42	1,010.54	60.882	ES
MILTON NELSON UN-C 1 - KPK WELL - NO SURVEYS	5,500.00	5,227.00	1,094.94	1,067.40	39.772	SF
MILTON NELSON UNIT 1 - KPK WELL - NO SURVEYS	200.00	184.00	401.79	401.26	749.462	CC, ES
MILTON NELSON UNIT 1 - KPK WELL - NO SURVEYS	5,100.00	4,977.00	1,186.29	1,162.95	50.835	SF
MLEYNEK 28-10M - KMG WELL - GYRO						Out of range
MLEYNEK U 28-10JI - KMG WELL - GYRO						Out of range
MLEYNEK U 28-15JI - KMG WELL - GYRO	13,797.07	7,488.48	2,204.77	2,089.29	19.091	CC
MLEYNEK U 28-15JI - KMG WELL - GYRO	13,800.00	7,488.47	2,204.77	2,089.25	19.085	ES
MLEYNEK U 28-15JI - KMG WELL - GYRO	14,100.00	7,488.14	2,225.49	2,107.04	18.789	SF
MORGAN-A 4 - KPK WELL - NO SURVEYS						Out of range
NELSON 42-33 /2-68/ 2 - ANADARKO WELL - NO SURV						Out of range
NELSON DUANE E 41-33 (2-68) 1 - CHAMPLIN PETRO						Out of range
NELSON DUANE E 41-33 (2-68) 1-X - KMG WELL - NO						Out of range
NELSON E UNIT 2 - CPR WELL - GYRO	18,022.57	7,405.31	2,191.81	2,014.24	12.344	CC
NELSON E UNIT 2 - CPR WELL - GYRO	18,100.00	7,402.91	2,193.17	2,014.10	12.247	ES

CC - Min centre to center distance or convergent point, SF - min separation factor, ES - min ellipse separation

Cathedral Energy Services

Anticollision Summary Report

Company:	Crestone Peak Resources	Local Co-ordinate Reference:	Well DREAM WEAVER South 3D-21H-N268 - Slot DREAM WEAVER South 3D-21H-N268 SHL
Project:	DJ BASIN	TVD Reference:	23' KB @ 4924.00usft (Original Well Elev)
Reference Site:	S21-T2N-R68W	MD Reference:	23' KB @ 4924.00usft (Original Well Elev)
Site Error:	0.00 usft	North Reference:	True
Reference Well:	DREAM WEAVER South 3D-21H-N268	Survey Calculation Method:	Minimum Curvature
Well Error:	0.00 usft	Output errors are at	2.00 sigma
Reference Wellbore	OH	Database:	USA EDM 5000 Multi Users DB
Reference Design:	PLAN #1	Offset TVD Reference:	Offset Datum

Summary						
Site Name Offset Well - Wellbore - Design	Reference Measured Depth (usft)	Offset Measured Depth (usft)	Distance Between Centres (usft)	Distance Between Ellipses (usft)	Separation Factor	Warning
S21-T2N-R68W (OFFSETS)						
NELSON E UNIT 2 - CPR WELL - GYRO	18,300.00	7,396.86	2,209.28	2,027.31	12.141	SF
NELSON MILTON H 'D' 1 - KMG WELL - GYRO	10,979.00	7,394.19	1,741.13	1,669.09	24.170	CC
NELSON MILTON H 'D' 1 - KMG WELL - GYRO	11,000.00	7,394.23	1,741.25	1,668.84	24.046	ES
NELSON MILTON H 'D' 1 - KMG WELL - GYRO	11,400.00	7,395.14	1,791.30	1,713.25	22.949	SF
NELSON MILTON H 'M' 1 - KMG WELL - GYRO	12,328.92	7,414.45	1,766.12	1,673.49	19.065	CC, ES
NELSON MILTON H 'M' 1 - KMG WELL - GYRO	12,700.00	7,412.91	1,804.68	1,706.80	18.437	SF
NELSON MILTON-F 1 - KPK WELL - NO SURVEYS						Out of range
NORTH RINN 0-4-9 - CPR WELL - SURVEYS						Out of range
NORTH RINN 0-6-9 - CPR WELL - SURVEYS						Out of range
NORTH RINN 0-8-9 - CPR WELL - SURVEYS						Out of range
NORTH RINN 13-9 - CPR WELL - SURVEYS						Out of range
NORTH RINN 14-9 - CPR WELL - SURVEYS						Out of range
NORTH RINN 24-9 - CPR WELL - SURVEYS						Out of range
NORTH RINN 2-4-9 - CPR WELL - SURVEYS						Out of range
NORTH RINN 2-6-9 - CPR WELL - SURVEYS						Out of range
OSKARSON 1 - HRM RES II LLC - NO SURVEYS						Out of range
OSKARSON 2 - ENERVEST OP - NO SURVEYS						Out of range
OSKARSON 24-33 - CPR WELL - GYRO	18,875.78	7,497.97	1,030.30	837.04	5.331	CC
OSKARSON 24-33 - CPR WELL - GYRO	18,900.00	7,498.06	1,030.79	836.59	5.308	ES
OSKARSON 24-33 - CPR WELL - GYRO	19,000.00	7,498.44	1,043.14	846.18	5.296	SF
OSKARSON 2-8-33 - CPR WELL - SURVEYS	19,150.03	7,600.83	631.30	461.99	3.729	CC, ES, SF
OSKARSON 3 - HRM RES II LLC - NO SURVEYS						Out of range
OSKARSON-E 1 - CPR WELL - GYRO	18,670.41	7,478.63	137.77	-54.57	0.716	Level 1, CC, ES, SF
OSKARSON-E 2 - CPR WELL - NO SURVEYS						Out of range
RASMUSSEN 3 - PETERSON ENERGY - GYRO						Out of range
RASMUSSEN 1 - PETERSON - GYRO	202.63	230.89	1,660.31	1,659.73	2,832.332	CC, ES
RASMUSSEN 1 - PETERSON - GYRO	4,300.00	4,276.86	2,226.03	2,208.77	128.998	SF
RASMUSSEN 11-28 - CPR WELL - SURVEYS	9,500.00	7,738.38	228.18	158.64	3.281	SF
RASMUSSEN 11-28 - CPR WELL - SURVEYS	9,519.65	7,738.33	227.33	158.19	3.288	CC, ES
RASMUSSEN 12-28 - CPR WELL - SURVEYS	11,029.40	7,537.94	324.42	247.21	4.201	CC, ES
RASMUSSEN 12-28 - CPR WELL - SURVEYS	11,100.00	7,537.19	332.01	252.97	4.200	SF
RASMUSSEN 2 - PETERSON ENERGY - NO SURVEYS	200.00	212.00	2,203.26	2,202.66	3,667.817	CC, ES
RASMUSSEN 2 - PETERSON ENERGY - NO SURVEYS	500.00	510.77	2,223.40	2,221.57	1,217.974	SF
RASMUSSEN 21-28 - CPR WELL - GYRO	9,593.49	7,408.05	817.95	765.72	15.659	CC
RASMUSSEN 21-28 - CPR WELL - GYRO	9,600.00	7,408.03	817.98	765.70	15.645	ES
RASMUSSEN 21-28 - CPR WELL - GYRO	9,700.00	7,407.71	824.86	772.03	15.614	SF
RASMUSSEN 22-28 - CPR WELL - GYRO	10,931.88	7,449.14	714.44	642.88	9.984	CC, ES, SF
RASMUSSEN 2-4-28 - CPR WELL - SURVEYS	11,548.95	7,483.85	336.92	249.89	3.871	CC, ES, SF
RASMUSSEN 31-28 - CPR WELL - GYRO	214.86	256.48	2,173.68	2,173.06	3,514.841	CC, ES
RASMUSSEN 31-28 - CPR WELL - GYRO	800.00	846.21	2,234.14	2,231.41	817.092	SF
RASMUSSEN 32-28 32-28 - CPR WELL - GYRO	11,119.22	7,427.35	2,072.10	1,997.95	27.946	CC, ES
RASMUSSEN 32-28 32-28 - CPR WELL - GYRO	11,500.00	7,422.09	2,106.79	2,028.92	27.055	SF
RASMUSSEN 4-0-28 - CPR WELL - SURVEYS	9,001.98	7,866.71	1,671.17	1,601.61	24.025	CC, ES
RASMUSSEN 4-0-28 - CPR WELL - SURVEYS	9,100.00	7,865.08	1,674.05	1,604.27	23.992	SF
RASMUSSEN 41-28 - CPR WELL - GYRO						Out of range
RASMUSSEN 42-28 - CPR WELL - SURVEYS						Out of range
RASMUSSEN 4-2-28 - CPR WELL - SURVEYS	10,282.38	7,582.18	1,696.42	1,627.35	24.562	CC
RASMUSSEN 4-2-28 - CPR WELL - SURVEYS	10,300.00	7,582.07	1,696.51	1,627.32	24.521	ES
RASMUSSEN 4-2-28 - CPR WELL - SURVEYS	10,500.00	7,580.78	1,710.32	1,640.05	24.342	SF
RASMUSSEN 4-4-28 - CPR WELL - SURVEYS	11,622.92	7,543.82	1,590.79	1,501.32	17.779	CC, ES
RASMUSSEN 4-4-28 - CPR WELL - SURVEYS	11,900.00	7,545.45	1,614.74	1,521.58	17.332	SF

CC - Min centre to center distance or convergent point, SF - min separation factor, ES - min ellipse separation

Cathedral Energy Services

Anticollision Summary Report

Company:	Crestone Peak Resources	Local Co-ordinate Reference:	Well DREAM WEAVER South 3D-21H-N268 - Slot DREAM WEAVER South 3D-21H-N268 SHL
Project:	DJ BASIN	TVD Reference:	23' KB @ 4924.00usft (Original Well Elev)
Reference Site:	S21-T2N-R68W	MD Reference:	23' KB @ 4924.00usft (Original Well Elev)
Site Error:	0.00 usft	North Reference:	True
Reference Well:	DREAM WEAVER South 3D-21H-N268	Survey Calculation Method:	Minimum Curvature
Well Error:	0.00 usft	Output errors are at	2.00 sigma
Reference Wellbore	OH	Database:	USA EDM 5000 Multi Users DB
Reference Design:	PLAN #1	Offset TVD Reference:	Offset Datum

Summary						
Site Name Offset Well - Wellbore - Design	Reference Measured Depth (usft)	Offset Measured Depth (usft)	Distance Between Centres (usft)	Distance Between Ellipses (usft)	Separation Factor	Warning
S21-T2N-R68W (OFFSETS)						
RASMUSSEN 44-29 - KPK WELL - NO SURVEYS						Out of range
RASMUSSEN 4-A - PETERSON ENERGY - GYRO	0.00	0.00	2,030.11			
RASMUSSEN 4-A - PETERSON ENERGY - GYRO	200.00	183.10	2,030.48	2,030.00	4,300.138	ES
RASMUSSEN 4-A - PETERSON ENERGY - GYRO	4,000.00	3,911.93	2,236.11	2,220.03	139.083	SF
RASMUSSEN C" 2" - CPR WELL - GYRO						Out of range
RASMUSSEN-C-UNIT 1 - CPR WELL - GYRO	10,109.76	7,414.14	132.65	73.34	2.237	CC, ES, SF
RODGERS 1 - KPK WELL - NO SURVEYS						Out of range
SAUNDERS TRUST 8-2K8 - EXTRACTION WELL - NO						Out of range
SCHLAGEL 2 - EXTRACTION WELL - NO SURVEYS						Out of range
SERAFINI E MAX GU 1 - KMG WELL - GYRO						Out of range
SERAFINI-B 2 - KPK WELL - NO SURVEYS						Out of range
SHAW 1 - KPK WELL - NO SURVEYS						Out of range
SHAW 15-20 - KPK - SURVEYS						Out of range
SHAW 16-20 - KPK - SURVEYS	5,141.63	5,070.00	2,118.34	2,084.86	63.279	CC, ES
SHAW 16-20 - KPK - SURVEYS	5,400.00	5,070.00	2,134.04	2,099.84	62.398	SF
STROMQUIST 1 - KPK WELL - NO SURVEYS	5,329.45	4,940.00	1,947.82	1,922.92	78.209	CC, ES
STROMQUIST 1 - KPK WELL - NO SURVEYS	5,700.00	4,940.00	1,982.76	1,956.47	75.426	SF
STROMQUIST 11-21 - KMG WELL - GYRO	2,743.56	2,707.96	767.21	757.82	81.686	CC, ES
STROMQUIST 11-21 - KMG WELL - GYRO	6,800.00	6,681.65	1,067.31	1,035.68	33.748	SF
STROMQUIST 13-21 - KMG WELL - GYRO	8,409.05	7,427.95	65.05	26.91	1.705	CC, ES, SF
STROMQUIST 22-21 - KMG WELL - SURVEYS	6,734.94	6,699.33	803.61	761.33	19.003	CC, ES
STROMQUIST 22-21 - KMG WELL - SURVEYS	6,800.00	6,773.54	804.60	761.96	18.869	SF
STROMQUIST 23-21 - KMG WELL - SURVEYS	209.15	198.09	419.95	419.28	624.083	CC, ES
STROMQUIST 23-21 - KMG WELL - SURVEYS	7,900.00	7,434.17	1,460.91	1,424.82	40.481	SF
STROMQUIST 34-21 - KMG WELL - SURVEYS	8,868.07	7,514.90	873.51	825.30	18.120	CC
STROMQUIST 34-21 - KMG WELL - SURVEYS	8,900.00	7,514.02	874.09	825.20	17.880	ES
STROMQUIST 34-21 - KMG WELL - SURVEYS	9,100.00	7,508.54	903.75	850.90	17.101	SF
STROMQUIST 35-21 - KMG WELL - SURVEYS	8,900.00	7,487.52	408.39	359.01	8.271	ES, SF
STROMQUIST 35-21 - KMG WELL - SURVEYS	8,903.00	7,487.50	408.38	359.02	8.274	CC
TRAVELERS 28-11M - KMG WELL - GYRO	12,700.00	7,443.14	337.58	239.16	3.430	ES, SF
TRAVELERS 28-11M - KMG WELL - GYRO	12,701.17	7,443.14	337.58	239.16	3.430	CC
TRAVELERS U 28-13DI - KMG WELL - GYRO	13,601.78	7,462.35	418.09	305.92	3.727	CC, ES, SF
UPRC 33-1M - KMG WELL - GYRO						Out of range
UPRR 43 PAN AM-B 7 - KPK WELL - NO SURVEYS						Out of range
WESTERN 3-21A - KMG WELL - GYRO						Out of range
WILDFLOWER 12-27 - KMG WELL - SURVEYS						Out of range
WILDFLOWER 33-27 - KMG WELL - SURVEYS						Out of range
WOOLEY UNIT 1 - KPK WELL - NO SURVEYS						Out of range

CC - Min centre to center distance or convergent point, SF - min separation factor, ES - min ellipse separation

Cathedral Energy Services

Anticollision Summary Report

Company:	Crestone Peak Resources	Local Co-ordinate Reference:	Well DREAM WEAVER South 3D-21H-N268 - Slot DREAM WEAVER South 3D-21H-N268 SHL
Project:	DJ BASIN	TVD Reference:	23' KB @ 4924.00usft (Original Well Elev)
Reference Site:	S21-T2N-R68W	MD Reference:	23' KB @ 4924.00usft (Original Well Elev)
Site Error:	0.00 usft	North Reference:	True
Reference Well:	DREAM WEAVER South 3D-21H-N268	Survey Calculation Method:	Minimum Curvature
Well Error:	0.00 usft	Output errors are at	2.00 sigma
Reference Wellbore	OH	Database:	USA EDM 5000 Multi Users DB
Reference Design:	PLAN #1	Offset TVD Reference:	Offset Datum

Summary

Site Name Offset Well - Wellbore - Design	Reference Measured Depth (usft)	Offset Measured Depth (usft)	Distance Between Centres (usft)	Distance Between Ellipses (usft)	Separation Factor	Warning
S32-T2N-R68W						
Anderson 22-32 - KPK WELL - NO SURVEYS						Out of range
Anderson 32-32 - CPR WELL - SURVEYS						Out of range
Anderson 41-32 - CPR - GYRO	14,762.28	7,343.04	1,560.79	1,430.50	11.980	CC
Anderson 41-32 - CPR - GYRO	14,800.00	7,342.53	1,561.24	1,430.25	11.919	ES
Anderson 41-32 - CPR - GYRO	15,000.00	7,339.80	1,578.78	1,445.16	11.816	SF
Anderson 4-2-32 - CPR WELL - SURVEYS						Out of range
Anderson 6-4-32 - CPR WELL - SURVEYS						Out of range
Anderson Trust 1 - KPK - NO SURVEYS						Out of range
Anderson Trust 1 A - CPR WELL - GYRO						Out of range
Anderson Trust 2-A - CPR WELL - NO SURVEYS						Out of range
Anderson Trust 32-2 - CPR WELL - GYRO						Out of range
Anderson Trust 32-8 - CPR WELL - GYRO	16,307.03	7,403.28	1,922.39	1,767.54	12.415	CC, ES
Anderson Trust 32-8 - CPR WELL - GYRO	16,500.00	7,400.76	1,932.05	1,774.23	12.243	SF
Anderson Trust C 1 - CPR WELL - SURVEYS	15,255.88	7,403.55	2,160.82	2,027.45	16.201	CC
Anderson Trust C 1 - CPR WELL - SURVEYS	15,300.00	7,403.99	2,161.27	2,027.11	16.109	ES
Anderson Trust C 1 - CPR WELL - SURVEYS	15,600.00	7,406.95	2,188.05	2,049.94	15.843	SF
Anderson Trust C Unit 2 - CPR WELL - GYRO						Out of range
Brown 22-5 - CPR WELL - GYRO						Out of range
Brown 31-5 - CPR WELL - SURVEYS						Out of range
Brown 41-5 - CPR WELL - SURVEYS	19,150.03	7,756.87	1,981.47	1,796.35	10.704	CC, ES, SF
Brown 5-3 - CPR WELL - GYRO						Out of range
Brown 5-5 - CPR WELL - GYRO						Out of range
Brown C Unit 1 - CPR WELL - GYRO						Out of range
Brown C Unit 2 - CPR WELL - GYRO						Out of range
Bryant 10-30 - KMG WELL - SURVEYS						Out of range
Bryant 16-30 - KMG WELL - SURVEYS						Out of range
Bryant 20-30 - KMG WELL - SURVEYS						Out of range
Bryant 23-30 - KMG WELL - SURVEYS						Out of range
Bryant 24-30 - KMG WELL - SURVEYS						Out of range
Bryant 33-29 - KMG WELL - SURVEYS						Out of range
Bryant 36-30 - KMG WELL - SURVEYS						Out of range
Bryant 8-30 - KMG WELL - SURVEYS						Out of range
Bryant Federal 37-30 - KMG WELL - SURVEYS						Out of range
Bulthaup 1-6 - KMG WELL - GYRO						Out of range
Bulthaup 16-6 - KMG WELL - SURVEYS						Out of range
Bulthaup 17-6 - KMG WELL - SURVEYS						Out of range
Bulthaup 24-6 - KMG WELL - SURVEYS						Out of range
Bulthaup 27-6 - KMG WELL - SURVEYS						Out of range
Bulthaup 39-6 - KMG WELL - SURVEYS						Out of range
Bulthaup 40-6 - KMG WELL - SURVEYS						Out of range
Bulthaup 8-6 - KMG WELL - GYRO						Out of range
Bulthaup 9-6 - KMG WELL - SURVEYS						Out of range
Canino 1-X - HUGHES CW - NO SURVEYS						Out of range
Champlin 86 Amoco F 6 - KPK - NO SURVEYS						Out of range
Champlin 86 N 1 - KMG WELL - GYRO						Out of range
Champlin Amoco 86 F 7 - KPK WELL - SURVEYS						Out of range
Cinque 1 - FOUNDATION WELL - NO SURVEYS						Out of range
Cinque 2 - FOUNDATION WELL - NO SURVEYS						Out of range
Cinque 4 - FOUNDATION WELL - NO SURVEYS						Out of range
FILE 3A-32H-K268 - OH - FINAL						Out of range
FILE 3B-32H-K268 - OH - FINAL						Out of range

CC - Min centre to center distance or convergent point, SF - min separation factor, ES - min ellipse separation

Cathedral Energy Services

Anticollision Summary Report

Company:	Crestone Peak Resources	Local Co-ordinate Reference:	Well DREAM WEAVER South 3D-21H-N268 - Slot DREAM WEAVER South 3D-21H-N268 SHL
Project:	DJ BASIN	TVD Reference:	23' KB @ 4924.00usft (Original Well Elev)
Reference Site:	S21-T2N-R68W	MD Reference:	23' KB @ 4924.00usft (Original Well Elev)
Site Error:	0.00 usft	North Reference:	True
Reference Well:	DREAM WEAVER South 3D-21H-N268	Survey Calculation Method:	Minimum Curvature
Well Error:	0.00 usft	Output errors are at	2.00 sigma
Reference Wellbore	OH	Database:	USA EDM 5000 Multi Users DB
Reference Design:	PLAN #1	Offset TVD Reference:	Offset Datum

Summary						
Site Name	Reference Measured Depth (usft)	Offset Measured Depth (usft)	Distance Between Centres (usft)	Distance Between Ellipses (usft)	Separation Factor	Warning
Offset Well - Wellbore - Design						
S32-T2N-R68W						
FILE 3C-32H-K268 - OH - FINAL						Out of range
FILE 3D-32H-K268 - OH - FINAL						Out of range
FILE 3E-32H-K268 - OH - FINAL						Out of range
FILE 3F-32H-K268 - OH - FINAL						Out of range
FILE 3G-32H-K268 - OH - FINAL						Out of range
FILE 3H-32H-K268 - OH - FINAL						Out of range
FILE 3Q-32H-K268 - OH - FINAL						Out of range
FILE 3R-32H-K268 - OH - FINAL						Out of range
FILE 3S-32H-K268 - OH - FINAL						Out of range
FILE 3T-32H-K268 - OH - FINAL						Out of range
FILE FED 3I-32H-K268 - OH - FINAL						Out of range
FILE FED 3J-32H-K268 - OH - FINAL						Out of range
FILE FED 3K-32H-K268 - OH - FINAL						Out of range
FILE FED 3K-32H-K268 - OH - PLAN #4						Out of range
FILE FED 3L-32H-K268 - OH - FINAL						Out of range
FILE FED 3M-32H-K268 - OH - FINAL						Out of range
FILE FED 3N-32H-K268 - OH - FINAL						Out of range
FILE FED 3O-32H-K268 - OH - FINAL						Out of range
FILE FED 3P-32H-K268 - OH - FINAL						Out of range
Foster 33-5 - CPR WELL - SURVEYS						Out of range
Foster 43-5 - CPR WELL - SURVEYS						Out of range
Foster 4-5 - CPR WELL - SURVEYS						Out of range
Foster 4-6-5 - CPR WELL - SURVEYS						Out of range
Foster 6-4-5 - CPR - SURVEYS						Out of range
Foster 6-4-5X - CPR WELL - SURVEYS						Out of range
Foster 6-8-5 - CPR WELL - SURVEYS						Out of range
Foster 8-8-5 - CPR WELL - SURVEYS						Out of range
Foster E Unit 1 - CPR - GYRO						Out of range
Gene 11-5 - KERR-MCGEE - GYRO						Out of range
Hankins 1 - KPK WELL - NO SURVEYS						Out of range
Hauck 17-29 - KMG WELL - SURVEYS						Out of range
Hauck 24-29 - KMG WELL - SURVEYS						Out of range
Hauck 7-29 - KMG WELL - SURVEYS						Out of range
HSR-Bryant 9-30A - KMG WELL - GYRO						Out of range
HSR-Williams 10-20 - KMG WELL - GYRO						Out of range
HWY52 4A-32H-O268 - OH - FINAL						Out of range
HWY52 4B-32H-O268 - OH - FINAL						Out of range
HWY52 4C-32H-O268 - OH - FINAL						Out of range
HWY52 4D-32H-O268 - OH - FINAL						Out of range
HWY52 4E-32H-O268 - OH - FINAL						Out of range
HWY52 4F-32H-O268 - OH - FINAL	19,000.00	19,000.00	2,144.00	1,880.63	8.141	ES, SF
HWY52 4F-32H-O268 - OH - FINAL	19,150.03	8,152.38	2,094.37	1,884.68	9.988	CC
HWY52 4G-32H-O268 - OH - FINAL	19,150.03	8,374.19	1,877.71	1,668.01	8.955	CC, ES, SF
HWY52 4H-32H-O268 - OH - FINAL	19,150.03	8,118.19	1,565.06	1,355.22	7.458	CC, ES, SF
HWY52 4I-32H-O268 - OH - FINAL	19,150.03	8,107.93	1,435.21	1,225.03	6.828	CC, ES, SF
HWY52 4J-32H-O268 - OH - FINAL	19,150.03	8,366.95	1,111.05	901.40	5.299	CC, ES, SF
HWY52 4K-32H-O268 - OH - FINAL	19,150.03	8,208.48	953.02	741.90	4.514	CC, ES, SF
HWY52 4L-32H-O268 - OH - FINAL						Out of range
HWY52 4M-32H-O268 - OH - FINAL						Out of range
HWY52 4N-32H-O268 - OH - FINAL						Out of range
HWY52 4O-32H-O268 - OH - FINAL						Out of range

CC - Min centre to center distance or convergent point, SF - min separation factor, ES - min ellipse separation

Cathedral Energy Services

Anticollision Summary Report

Company:	Crestone Peak Resources	Local Co-ordinate Reference:	Well DREAM WEAVER South 3D-21H-N268 - Slot DREAM WEAVER South 3D-21H-N268 SHL
Project:	DJ BASIN	TVD Reference:	23' KB @ 4924.00usft (Original Well Elev)
Reference Site:	S21-T2N-R68W	MD Reference:	23' KB @ 4924.00usft (Original Well Elev)
Site Error:	0.00 usft	North Reference:	True
Reference Well:	DREAM WEAVER South 3D-21H-N268	Survey Calculation Method:	Minimum Curvature
Well Error:	0.00 usft	Output errors are at	2.00 sigma
Reference Wellbore	OH	Database:	USA EDM 5000 Multi Users DB
Reference Design:	PLAN #1	Offset TVD Reference:	Offset Datum

Summary						
Site Name Offset Well - Wellbore - Design	Reference Measured Depth (usft)	Offset Measured Depth (usft)	Distance Between Centres (usft)	Distance Between Ellipses (usft)	Separation Factor	Warning
S32-T2N-R68W						
HWY52 4P-32H-O268 - OH - FINAL						Out of range
HWY52 4Q-32H-O268 - OH - FINAL						Out of range
HWY52 4R-32H-O268 - OH - FINAL	19,150.03	7,753.00	1,982.48	1,774.19	9.518	CC, ES, SF
HWY52 4S-32H-O268 - OH - FINAL	19,150.03	7,800.00	1,794.16	1,585.46	8.597	CC, ES, SF
HWY52 4T-32H-O268 - OH - FINAL	16,600.00	16,600.00	1,785.79	1,501.80	6.288	SF
HWY52 4T-32H-O268 - OH - FINAL	19,150.03	7,767.76	1,708.31	1,500.44	8.218	CC, ES
HWY52 4U-32H-O268 - OH - FINAL	19,150.03	7,746.89	1,356.24	1,148.32	6.523	CC, ES, SF
HWY52 4V-32H-O268 - OH - FINAL	19,150.03	7,831.00	1,260.48	1,052.25	6.053	CC, ES, SF
HWY52 4W-32H-O268 - OH - FINAL	19,150.03	7,888.42	944.55	736.99	4.551	CC, ES, SF
Jack Hein Unit 1 - HS RESOURCES WELL - NO SURVE						Out of range
John Lamar 1 - KPK WELL - NO SURVEYS						Out of range
Johnson 32-30 - KPK WELL - NO SURVEYS						Out of range
Johnson 7-30A - KMG WELL - GYRO						Out of range
Kenneth Koch 1 - KPK WELL - NO SURVEYS						Out of range
Kenyon 34-19 - CPR WELL - SURVEYS						Out of range
Kenyon 4-8-19 - CPR WELL - SURVEYS						Out of range
Kenyon 8-4-19 - CPR WELL - SURVEYS						Out of range
Kenyon 8-6-19 - CPR WELL - SURVEYS						Out of range
Kenyon 8-8-19 - CPR WELL - SURVEYS						Out of range
Koch 41-6 - KPK WELL - NO SURVEYS						Out of range
Koch Kenneth E A-1 - KMG WELL - SURVEY						Out of range
Milton H Nelson H-1 - KMG WELL - GYRO						Out of range
Milton H Nelson I1 - KMG WELL - GYRO						Out of range
Milton H Nelson L1 - KMG WELL - GYRO						Out of range
Milton Nelson K1 - KMG WELL - GYRO						Out of range
Nelson 1 - TEXAS TEA - NO SURVEYS						Out of range
Nelson 1-A - TEXAS TEA WELL - NO SURVEYS						Out of range
Nelson 2 - TEXAS TEA WELL - NO SURVEYS						Out of range
Nelson 3 - TEXAS TEA WELL - NO SURVEYS						Out of range
Nelson 4 - TEXAS TEA WELL - NO SURVEYS						Out of range
Nelson 5 - TEXAS TEA WELL - NO SURVEYS						Out of range
Nelson D2 - KPK WELL - NO SURVEYS						Out of range
Nelson E Unit 1 - CPR WELL - GYRO						Out of range
Nelson E Unit 2 - CPR WELL - GYRO	18,022.83	7,396.12	2,191.63	2,014.07	12.343	CC
Nelson E Unit 2 - CPR WELL - GYRO	18,100.00	7,393.84	2,192.99	2,013.92	12.247	ES
Nelson E Unit 2 - CPR WELL - GYRO	18,300.00	7,388.00	2,209.07	2,027.11	12.140	SF
NOAA Federal 11-32 - CPR WELL - GYRO						Out of range
Osarkson 2-8-33 - CPR WELL - SURVEYS	19,150.03	7,600.83	633.12	455.08	3.556	CC, ES, SF
Oskarson 13-33 - CPR - GYRO	17,688.04	7,470.59	620.25	443.44	3.508	CC
Oskarson 13-33 - CPR - GYRO	17,700.00	7,470.48	620.36	443.28	3.503	ES, SF
Oskarson 23-33 - CPR WELL - GYRO	17,395.72	7,526.07	930.63	763.55	5.570	CC
Oskarson 23-33 - CPR WELL - GYRO	17,400.00	7,525.98	930.64	763.54	5.569	ES, SF
Oskarson 4 - HRM - NO SURVEYS						Out of range
Oskarson 4-4-33 - CPR WELL - SURVEYS	17,000.00	7,971.81	1,565.98	1,380.15	8.427	ES, SF
Oskarson 4-4-33 - CPR WELL - SURVEYS	17,008.98	7,971.69	1,565.95	1,380.17	8.429	CC
Oskarson 4-6-33 - CPR WELL - SURVEYS	18,244.22	7,733.14	1,564.95	1,377.11	8.331	CC, ES, SF
Oskarson 4-8-33 - CPR WELL - SURVEYS	19,051.17	7,785.13	1,675.10	1,482.31	8.689	CC
Oskarson 4-8-33 - CPR WELL - SURVEYS	19,100.00	7,784.46	1,676.65	1,481.43	8.589	ES
Oskarson 4-8-33 - CPR WELL - SURVEYS	19,150.03	7,783.78	1,681.45	1,483.89	8.511	SF
Oskarson E Unit 1 - CPR WELL - GYRO	18,676.37	7,467.44	136.77	-51.35	0.727	Level 1, CC, ES, SF
Paquette 13-5 - KMG WELL - GYRO						Out of range

CC - Min centre to center distance or convergent point, SF - min separation factor, ES - min ellipse separation

Cathedral Energy Services

Anticollision Summary Report

Company:	Crestone Peak Resources	Local Co-ordinate Reference:	Well DREAM WEAVER South 3D-21H-N268 - Slot DREAM WEAVER South 3D-21H-N268 SHL
Project:	DJ BASIN	TVD Reference:	23' KB @ 4924.00usft (Original Well Elev)
Reference Site:	S21-T2N-R68W	MD Reference:	23' KB @ 4924.00usft (Original Well Elev)
Site Error:	0.00 usft	North Reference:	True
Reference Well:	DREAM WEAVER South 3D-21H-N268	Survey Calculation Method:	Minimum Curvature
Well Error:	0.00 usft	Output errors are at	2.00 sigma
Reference Wellbore	OH	Database:	USA EDM 5000 Multi Users DB
Reference Design:	PLAN #1	Offset TVD Reference:	Offset Datum

Summary						
Site Name	Reference Measured Depth (usft)	Offset Measured Depth (usft)	Distance Between Centres (usft)	Distance Between Ellipses (usft)	Separation Factor	Warning
S32-T2N-R68W						
Paquette 14-5 - KERR-MCGEE - GYRO						Out of range
Rasmussen 10-29 - KMG WELL - SURVEYS						Out of range
Rasmussen 14-29 - KMG WELL - SURVEYS						Out of range
Rasmussen 16-29 - KMG WELL - SURVEYS	13,485.39	7,592.40	1,695.72	1,570.54	13.546	CC
Rasmussen 16-29 - KMG WELL - SURVEYS	13,500.00	7,592.95	1,695.78	1,570.32	13.516	ES
Rasmussen 16-29 - KMG WELL - SURVEYS	13,700.00	7,600.57	1,709.22	1,580.57	13.285	SF
Rasmussen 19-29 - KMG WELL - SURVEYS						Out of range
Rasmussen 20-29 - KMG WELL - SURVEYS						Out of range
Rasmussen 22-29 - KMG WELL - SURVEYS						Out of range
Rasmussen 23-29 - KMG WELL - SURVEYS						Out of range
Rasmussen 25-29 - KMG WELL - SURVEYS						Out of range
Rasmussen 36-29 - KMG WELL - SURVEYS						Out of range
Rasmussen 37-29 - KMG WELL - SURVEYS	14,186.42	7,623.26	2,202.77	2,065.52	16.050	CC
Rasmussen 37-29 - KMG WELL - SURVEYS	14,200.00	7,623.13	2,202.81	2,065.34	16.024	ES
Rasmussen 37-29 - KMG WELL - SURVEYS	14,500.00	7,620.30	2,224.97	2,083.59	15.737	SF
Rasmussen 39-29 - KMG WELL - SURVEYS	12,961.82	7,829.12	1,055.73	936.08	8.823	CC
Rasmussen 39-29 - KMG WELL - SURVEYS	13,000.00	7,829.28	1,056.42	935.67	8.749	ES
Rasmussen 39-29 - KMG WELL - SURVEYS	13,100.00	7,829.72	1,064.73	941.49	8.639	SF
Rasmussen Fed 35-29 - KMG WELL - SURVEYS						Out of range
Ray Nelson 0-4-32 - CPR WELL - SURVEYS						Out of range
Ray Nelson 12-32 - CPR WELL - GYRO						Out of range
Ray Nelson 13-32 - CPR WELL - SURVEYS						Out of range
Ray Nelson 14-32 - CPR WELL - SURVEYS						Out of range
Ray Nelson 23-32 - CPR WELL - GYRO						Out of range
Ray Nelson 24-32 - CPR WELL - SURVEYS						Out of range
Ray Nelson 2-4-32 - CPR WELL - SURVEYS						Out of range
Ray Nelson 33-32 - CPR WELL - SURVEYS						Out of range
Ray Nelson 34-32 - CPR WELL - SURVEYS						Out of range
Ray Nelson 44-32 - CPR WELL - SURVEYS	19,150.03	7,596.43	1,566.91	1,370.80	7.990	CC, ES, SF
Ray Nelson 4-4-32 - CPR WELL - SURVEYS						Out of range
Ray Nelson 4-6-32 - CPR WELL - SURVEYS						Out of range
Ray Nelson 8-8-32 - CPR WELL - SURVEYS	19,150.03	7,768.95	1,076.82	879.25	5.450	CC, ES, SF
Regnier Farms 32-19 - CPR WELL - GYRO						Out of range
Regnier Farms 33-19 - CPR WELL - GYRO						Out of range
Regnier Farms 42-19 - CPR WELL - GYRO						Out of range
Regnier Farms 43-19 - CPR WELL - SURVEYS						Out of range
Regnier Farms B 2 - CPR WELL - GYRO						Out of range
Regnier Farms B Unit 1 - CPR WELL - GYRO						Out of range
Sawdey Unit 2 - KMG WELL - GYRO						Out of range
Schriner 11-5 - KMG WELL - GYRO						Out of range
Schriner 12-5 - KMG WELL - GYRO						Out of range
SEC Four 12-4 - KMG WELL - SURVEYS						Out of range
SEC Four 13-4 - KMG WELL - SURVEYS						Out of range
SEC Four 14-4 - KMG WELL - SURVEYS						Out of range
SEC Four 21-4 - KMG WELL - SURVEYS						Out of range
SEC Four 22-4 - KMG WELL - SURVEYS						Out of range
SEC Four 31-4 - KMG WELL - SURVEYS	19,150.03	7,650.09	1,959.41	1,855.41	18.840	CC, ES, SF
SEC Four 32-4 - KMG WELL - SURVEYS						Out of range
SEC Four 33-4 - KMG WELL - SURVEYS						Out of range
SEC Four 3-4 - KMG WELL - SURVEYS	19,150.03	7,644.41	1,521.62	1,369.30	9.990	CC, ES, SF
SEC Four 35-4 - KMG WELL - SURVEYS						Out of range

CC - Min centre to center distance or convergent point, SF - min separation factor, ES - min ellipse separation

Cathedral Energy Services

Anticollision Summary Report

Company:	Crestone Peak Resources	Local Co-ordinate Reference:	Well DREAM WEAVER South 3D-21H-N268 - Slot DREAM WEAVER South 3D-21H-N268 SHL
Project:	DJ BASIN	TVD Reference:	23' KB @ 4924.00usft (Original Well Elev)
Reference Site:	S21-T2N-R68W	MD Reference:	23' KB @ 4924.00usft (Original Well Elev)
Site Error:	0.00 usft	North Reference:	True
Reference Well:	DREAM WEAVER South 3D-21H-N268	Survey Calculation Method:	Minimum Curvature
Well Error:	0.00 usft	Output errors are at	2.00 sigma
Reference Wellbore	OH	Database:	USA EDM 5000 Multi Users DB
Reference Design:	PLAN #1	Offset TVD Reference:	Offset Datum

Summary						
Site Name Offset Well - Wellbore - Design	Reference Measured Depth (usft)	Offset Measured Depth (usft)	Distance Between Centres (usft)	Distance Between Ellipses (usft)	Separation Factor	Warning
S32-T2N-R68W						
SEC Four 4-4 - KMG WELL - SURVEYS	19,150.03	7,596.21	1,215.07	1,156.79	20.850	CC, ES, SF
SEC Four 5-4 - KMG WELL - SURVEYS						Out of range
SEC Four 6-4 - KMG WELL - SURVEYS						Out of range
Shaw 11-29A - KMG WELL - SURVEYS						Out of range
Shaw 12-29A - KMG - GYRO						Out of range
Shaw 15-20 - KPK - SURVEYS						Out of range
Shaw 16-20 - KPK - SURVEYS	5,135.27	5,070.00	2,104.84	2,071.21	62.588	CC, ES
Shaw 16-20 - KPK - SURVEYS	5,400.00	5,070.00	2,121.43	2,087.05	61.722	SF
Tallgrass 1-8 - KMG - SURVEYS						Out of range
Tallgrass 2-8 - KMG - SURVEYS						Out of range
Tallgrass 3-8 - KMG - SURVEYS						Out of range
Tallgrass 4-8 - KMG - SURVEYS						Out of range
Tallgrass 5-8 - KMG - SURVEYS						Out of range
Tallgrass 6-8 - KMG WELL - SURVEYS						Out of range
Williams 10-20 - KMG WELL - SURVEYS						Out of range
Williams 11-20 - KMG WELL - SURVEYS						Out of range
Williams 13-20 - KMG WELL - SURVEYS						Out of range
Williams 14-20 - KMG WELL - SURVEYS						Out of range
Williams 16-20 - KMG WELL - SURVEYS	8,216.76	7,568.88	1,582.20	1,535.96	34.214	CC, ES
Williams 16-20 - KMG WELL - SURVEYS	8,500.00	7,576.44	1,607.34	1,560.00	33.957	SF
Williams 18-29 - KMG WELL - SURVEYS						Out of range
Williams 23-20 - KMG WELL - SURVEYS						Out of range
Williams 24-20 - KMG WELL - SURVEYS						Out of range
Williams 24-20X - KMG WELL - SURVEYS						Out of range
Williams 25-20 - KMG WELL - SURVEYS						Out of range
Williams 35-20 - KMG WELL - SURVEYS						Out of range
Williams 36-20 - KMG WELL - SURVEYS						Out of range
Williams 39-20 - KMG WELL - SURVEYS	7,680.68	7,578.65	985.84	945.39	24.370	CC, ES
Williams 39-20 - KMG WELL - SURVEYS	7,900.00	7,616.62	1,013.93	972.25	24.326	SF
Williams 4-29 - KMG WELL - SURVEYS						Out of range
Williams 7-20 - KMG WELL - SURVEYS						Out of range
Williams 8-20 - KMG WELL - SURVEYS						Out of range
Williams 9-20 - KMG WELL - SURVEYS	7,137.27	7,132.61	1,638.19	1,597.25	40.013	CC, ES
Williams 9-20 - KMG WELL - SURVEYS	7,500.00	7,335.83	1,685.78	1,642.61	39.051	SF
Woolley 41-7 - CPR WELL - GYRO						Out of range
Woolley 42-7 KPK - KPK WELL - SURVEYS						Out of range

Cathedral Energy Services

Anticollision Summary Report

Company:	Crestone Peak Resources	Local Co-ordinate Reference:	Well DREAM WEAVER South 3D-21H-N268 - Slot DREAM WEAVER South 3D-21H-N268 SHL
Project:	DJ BASIN	TVD Reference:	23' KB @ 4924.00usft (Original Well Elev)
Reference Site:	S21-T2N-R68W	MD Reference:	23' KB @ 4924.00usft (Original Well Elev)
Site Error:	0.00 usft	North Reference:	True
Reference Well:	DREAM WEAVER South 3D-21H-N268	Survey Calculation Method:	Minimum Curvature
Well Error:	0.00 usft	Output errors are at	2.00 sigma
Reference Wellbore	OH	Database:	USA EDM 5000 Multi Users DB
Reference Design:	PLAN #1	Offset TVD Reference:	Offset Datum

Summary						
Site Name	Reference Measured Depth (usft)	Offset Measured Depth (usft)	Distance Between Centres (usft)	Distance Between Ellipses (usft)	Separation Factor	Warning
Offset Well - Wellbore - Design						
S7-T1N-R68W (Woolley-S/B/Morgan Hills)						
BAILEY 8-8-1 (EXISTING) - CPR WELL - SURVEYS						Out of range
BEARDEN 0-6-6 (EXISTING) - CPR WELL - SURVEYS						Out of range
BEARDEN 1 (EXISTING) - CPR WELL - GYRO						Out of range
BEARDEN 13-6 (EXISTING) - CPR WELL - SURVEYS						Out of range
BEARDEN 14-6 (EXISTING) - CPR WELL - SURVEYS						Out of range
BEARDEN 23-6 (EXISTING) - ENCANA WELL - GYRO						Out of range
BEARDEN 24-6 (EXISTING) - CPR WELL - CPR WELL						Out of range
BEARDEN 2-4-6 (EXISTING) - CPR WELL - SURVEYS						Out of range
BEARDEN 2-8-6 (EXISTING) - CPR WELL - SURVEYS						Out of range
BECKY 1 (EXISTING) - FOUNDATION WELL - NO SUR						Out of range
BECKY 2-6 (EXISTING) - EXTRACTION WELL - GYRO						Out of range
BECKY 5-6 (EXISTING) - FOUNDATION WELL - NO SU						Out of range
BECKY 7-6 (EXISTING) - EXTRACTION WELL - GYRO						Out of range
BILLINGS 21-7 (EXISTING) - KPK WELL - SURVEYS						Out of range
BULTHAUP 10-6 (EXISTING) - KMG WELL - SURVEYS						Out of range
BULTHAUP 15-6 (EXISTING) - KMG WELL - GYRO						Out of range
BULTHAUP 17-6 (EXISTING) - KMG WELL - SURVEYS						Out of range
BULTHAUP 21-6 (EXISTING) - KMG WELL - SURVEYS						Out of range
BULTHAUP 23-6 (EXISTING) - KMG WELL - SURVEYS						Out of range
BULTHAUP 27-6 (EXISTING) - KMG WELL - SURVEYS						Out of range
CANYON CREEK 43-13 (EXISTING) - CPR WELL - SUR						Out of range
CANYON CREEK 8-6-13X (EXISTING) - CPR WELL - S						Out of range
CHAMPLIN-86-AMOCO 1 (EXISTING) - AMOCO - SURV						Out of range
COAL CREEK 6-0-19 (EXISTING) - CPR WELL - STK						Out of range
COAL CREEK 6-0-19 (EXISTING) - OH - SURVEYS						Out of range
COMMONS 28-19 (EXISTING) - KMG WELL - SURVEYS						Out of range
ERIE CHAMPLIN 18-9 (EXISTING) - EXISTING - SURVE						Out of range
ERIE CHAMPLIN B UNIT 1 - CPR WELL - GYRO						Out of range
ERIE CHAMPLIN B UNIT 2 - CPR WELL - GYRO						Out of range
I & J 7-6 (EXISTING) - KMG WELL - GYRO						Out of range
Morgan Hills 1A-7H-A168 - HZ - FINAL						Out of range
Morgan Hills 1B-7H-A168 - HZ - FINAL						Out of range
Morgan Hills 1C-7H-A168 - HZ - FINAL						Out of range
Morgan Hills 1D-7H-A168 - HZ - FINAL						Out of range
Morgan Hills 1E-7H-A168 - HZ - FINAL						Out of range
Morgan Hills 1F-7H-A168 - HZ - FINAL						Out of range
Morgan Hills 1G-7H-A168 - HZ - FINAL						Out of range
Morgan Hills 1H-7H-A168 - HZ - FINAL						Out of range
Morgan Hills 1I-7H-A168 - OH - FINAL						Out of range
SOSA 11-18 (EXISTING) - CPR WELL - SURVEYS						Out of range
SOSA 12-18 (EXISTING) - CPR WELL - SURVEYS						Out of range
SOSA 21-18 (EXISTING) - CPR WELL - SURVEYS						Out of range
SOSA 22-18 (EXISTING) - CPR WELL - SURVEYS						Out of range
SOSA A UNIT 1 (EXISTING) - CPR WELL - GYRO						Out of range
TALLGRASS 33-17 (EXISTING) - KMG WELL - SURVEY						Out of range
THOMAS 14-7(EXISTING) - CPR WELL - SURVEYS						Out of range
THOMAS 24-7 (EXISTING) - CPR WELL - SURVEYS						Out of range
THOMAS 2-8-7 (EXISTING) - CPR WELL - SURVEYS						Out of range
THOMAS 33-7 (EXISTING) - CPR WELL - SURVEYS						Out of range
THOMAS 7-12 (EXISTING) - CPR WELL - GYRO						Out of range
Thomas 7-14 (AL) - Existing - NO SURVEYS						Out of range

CC - Min centre to center distance or convergent point, SF - min separation factor, ES - min ellipse separation

Cathedral Energy Services

Anticollision Summary Report

Company:	Crestone Peak Resources	Local Co-ordinate Reference:	Well DREAM WEAVER South 3D-21H-N268 - Slot DREAM WEAVER South 3D-21H-N268 SHL
Project:	DJ BASIN	TVD Reference:	23' KB @ 4924.00usft (Original Well Elev)
Reference Site:	S21-T2N-R68W	MD Reference:	23' KB @ 4924.00usft (Original Well Elev)
Site Error:	0.00 usft	North Reference:	True
Reference Well:	DREAM WEAVER South 3D-21H-N268	Survey Calculation Method:	Minimum Curvature
Well Error:	0.00 usft	Output errors are at	2.00 sigma
Reference Wellbore	OH	Database:	USA EDM 5000 Multi Users DB
Reference Design:	PLAN #1	Offset TVD Reference:	Offset Datum

Summary						
Site Name	Reference Measured Depth (usft)	Offset Measured Depth (usft)	Distance Between Centres (usft)	Distance Between Ellipses (usft)	Separation Factor	Warning
Offset Well - Wellbore - Design						
S7-T1N-R68W (Woolley-S/B/Morgan Hills)						
THOMAS E UNIT 1 (EXISTING) - CPR WELL - GYRO						Out of range
THOMAS E UNIT 2 - VESSELS WELL - INC ONLY						Out of range
THOMAS K UNIT 1 (EXISTING) - EXISTING - NO SURV						Out of range
WHEELER G UNIT 1 - CPR - GYRO						Out of range
WIGGETT 13-1 - CPR - GYRO						Out of range
WIGGETT 8-2-13 (EXISTING) - CPR WELL - SURVEYS						Out of range
WOOLLEY 11-7 (EXISTING) - CPR WELL - SURVEYS						Out of range
WOOLLEY 12-7 (EXISTING) - CPR WELL - GYRO						Out of range
WOOLLEY 21-7 (EXISTING) - CPR WELL - GYRO						Out of range
WOOLLEY 22-7 (EXISTING) - CPR WELL - SURVEYS						Out of range
WOOLLEY 2-4-7 (EXISTING) - CPR WELL - SURVEYS						Out of range
WOOLLEY 4-0-7 (EXISTING) - CPR WELL - SURVEYS						Out of range
WOOLLEY 41-7 (EXISTING) - CPR WELL - GYRO						Out of range
WOOLLEY 42-7 (EXISTING) - CPR WELL - GYRO						Out of range
WOOLLEY 42-7 KPK (EXISTING) - KPK WELL - SURVE						Out of range
WOOLLEY A 1-7 (EXISTING) - CPR WELL - GYRO						Out of range
WOOLLEY F UNIT 1 (EXISTING) - CPR WELL - GYRO						Out of range
Woolley-Becky 2A-7H-E168 - Hz - FINAL						Out of range
Woolley-Becky 2B-7H-E168 - Hz - FINAL						Out of range
Woolley-Becky 2C-7H-E168 - Hz - FINAL						Out of range
Woolley-Becky 2D-7H-E168 - Hz - FINAL						Out of range
Woolley-Becky 2E-7H-E168 - Hz - FINAL						Out of range
Woolley-Becky 2F-7H-E168 - Hz - FINAL						Out of range
Woolley-Becky 2G-7H-E168 - Hz - FINAL						Out of range
Woolley-Becky 2H-7H-E168 - Hz - FINAL						Out of range
Woolley-Sosa 2A-7H-E168 - OH - FINAL						Out of range
Woolley-Sosa 2B-7H-E168 - HZ - FINAL						Out of range
Woolley-Sosa 2C-7H-E168 - HZ - FINAL						Out of range
Woolley-Sosa 2D-7H-E168 - HZ - FINAL						Out of range
Woolley-Sosa 2E-7H-E168 - HZ - FINAL						Out of range
Woolley-Sosa 2F-7H-E168 - HZ - FINAL						Out of range
Woolley-Sosa 2G-7H-E168 - HZ - FINAL						Out of range

Cathedral Energy Services

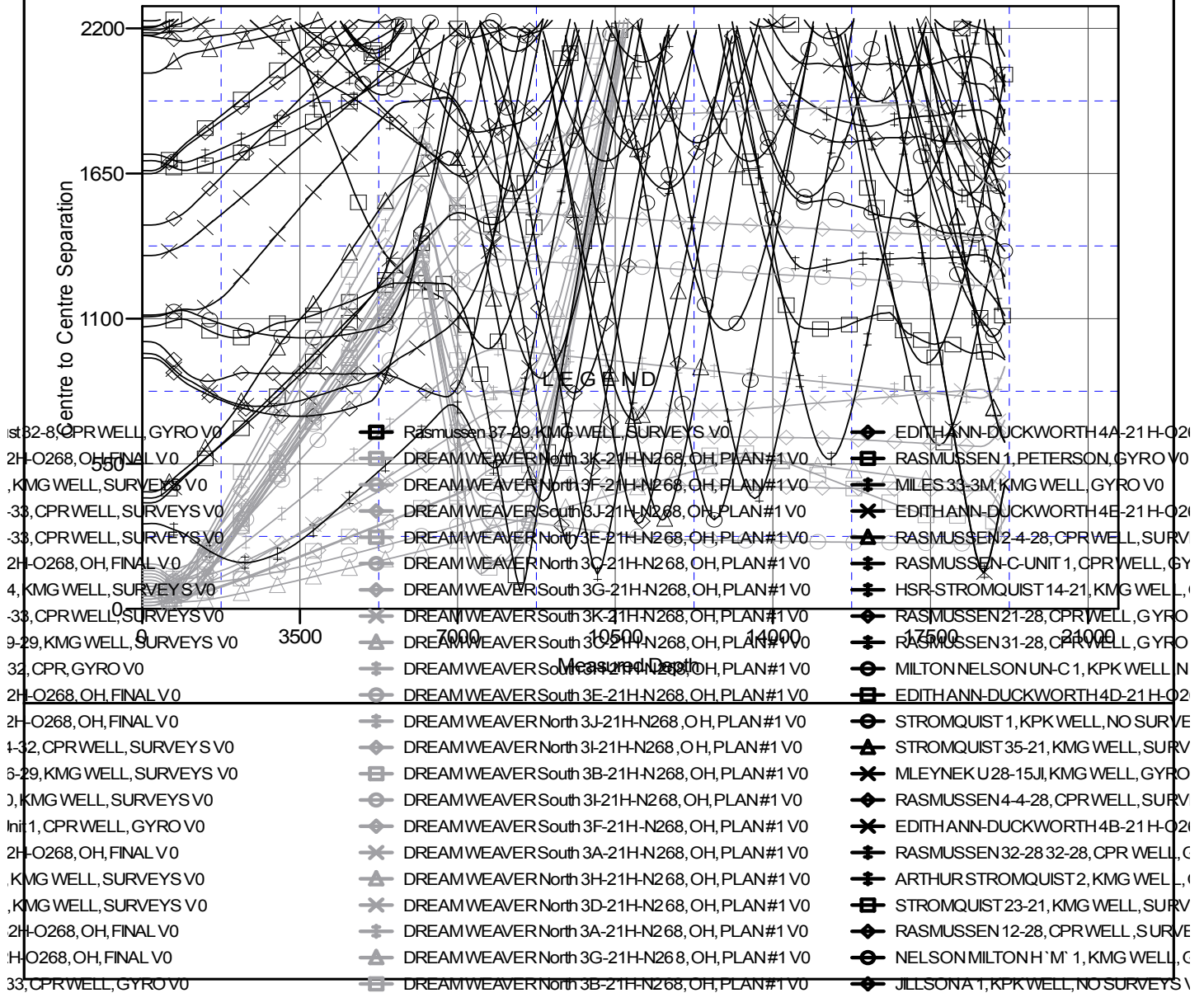
Anticollision Summary Report

Company:	Crestone Peak Resources	Local Co-ordinate Reference:	Well DREAM WEAVER South 3D-21H-N268 - Slot DREAM WEAVER South 3D-21H-N268 SHL
Project:	DJ BASIN	TVD Reference:	23' KB @ 4924.00usft (Original Well Elev)
Reference Site:	S21-T2N-R68W	MD Reference:	23' KB @ 4924.00usft (Original Well Elev)
Site Error:	0.00 usft	North Reference:	True
Reference Well:	DREAM WEAVER South 3D-21H-N268	Survey Calculation Method:	Minimum Curvature
Well Error:	0.00 usft	Output errors are at	2.00 sigma
Reference Wellbore	OH	Database:	USA EDM 5000 Multi Users DB
Reference Design:	PLAN #1	Offset TVD Reference:	Offset Datum

Reference Depths are relative to 23' KB @ 4924.00usft (Original Well E
Offset Depths are relative to Offset Datum
Central Meridian is -105.500000

Coordinates are relative to: DREAM WEAVER South 3D-21H-N268 - Slot DREAM
Coordinate System is US State Plane 1983, Colorado Northern Zone
Grid Convergence at Surface is: 0.32°

Ladder Plot



CC - Min centre to center distance or convergent point, SF - min separation factor, ES - min ellipse separation

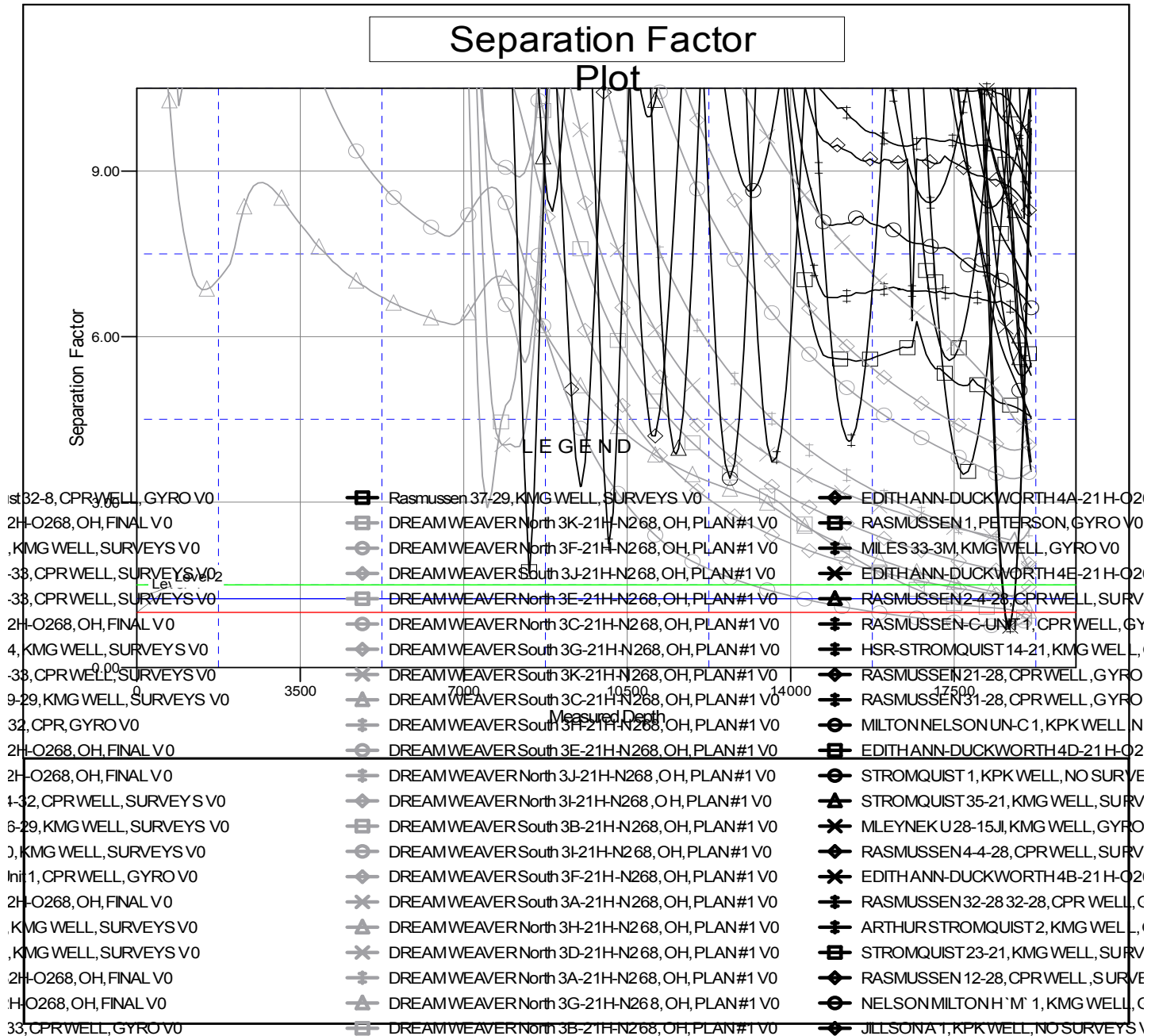
Cathedral Energy Services

Anticollision Summary Report

Company:	Crestone Peak Resources	Local Co-ordinate Reference:	Well DREAM WEAVER South 3D-21H-N268 - Slot DREAM WEAVER South 3D-21H-N268 SHL
Project:	DJ BASIN	TVD Reference:	23' KB @ 4924.00usft (Original Well Elev)
Reference Site:	S21-T2N-R68W	MD Reference:	23' KB @ 4924.00usft (Original Well Elev)
Site Error:	0.00 usft	North Reference:	True
Reference Well:	DREAM WEAVER South 3D-21H-N268	Survey Calculation Method:	Minimum Curvature
Well Error:	0.00 usft	Output errors are at	2.00 sigma
Reference Wellbore	OH	Database:	USA EDM 5000 Multi Users DB
Reference Design:	PLAN #1	Offset TVD Reference:	Offset Datum

Reference Depths are relative to 23' KB @ 4924.00usft (Original Well E
Offset Depths are relative to Offset Datum
Central Meridian is -105.500000

Coordinates are relative to: DREAM WEAVER South 3D-21H-N268 - Slot DREAM
Coordinate System is US State Plane 1983, Colorado Northern Zone
Grid Convergence at Surface is: 0.32°



CC - Min centre to center distance or convergent point, SF - min separation factor, ES - min ellipse separation