

Location:	COLORADO	Slot:	SLOT#06 PRONGHORN O-7-6XRLNB (428'FNL & 1485'FWL, SEC.18)
Field:	WELD COUNTY	Well:	PRONGHORN O-7-6XRLNB
Facility:	SEC.18-T05N-R61W	Wellbore:	PRONGHORN O-7-6XRLNB PWB

Location:	COLORADO	Slot:	SLOT#06 PRONGHORN O-7-6XRLNB (428'FNL & 1485'FWL, SEC.18)
Field:	WELD COUNTY	Well:	PRONGHORN O-7-6XRLNB
Facility:	SEC.18-T05N-R61W	Wellbore:	PRONGHORN O-7-6XRLNB PWB

Plot reference wellpath is PRONGHORN O-7-6XRLNB PWP (REV-A.0)

True vertical depths are referenced to RIG (17KB) (RKB)

\* = Wellpath was transformed from a different geodetic datum

Measured depths are referenced to RIG (17KB) (RKE)

North Reference: True north

RIG (17KB) (RKB) to Mean Sea Level: 4582 feet

Scale: True distance

Mean Sea Level to Mud line (At Slot: SLOT#06 PRONGHORN O-7-6XRLNB (428FNL & 1485FWL, SEC.18)): 0 feet

Depths are in feet

Coordinates are in feet referenced to Slo

Created by: ingmjamr on 2018-02-08

Database: Derver

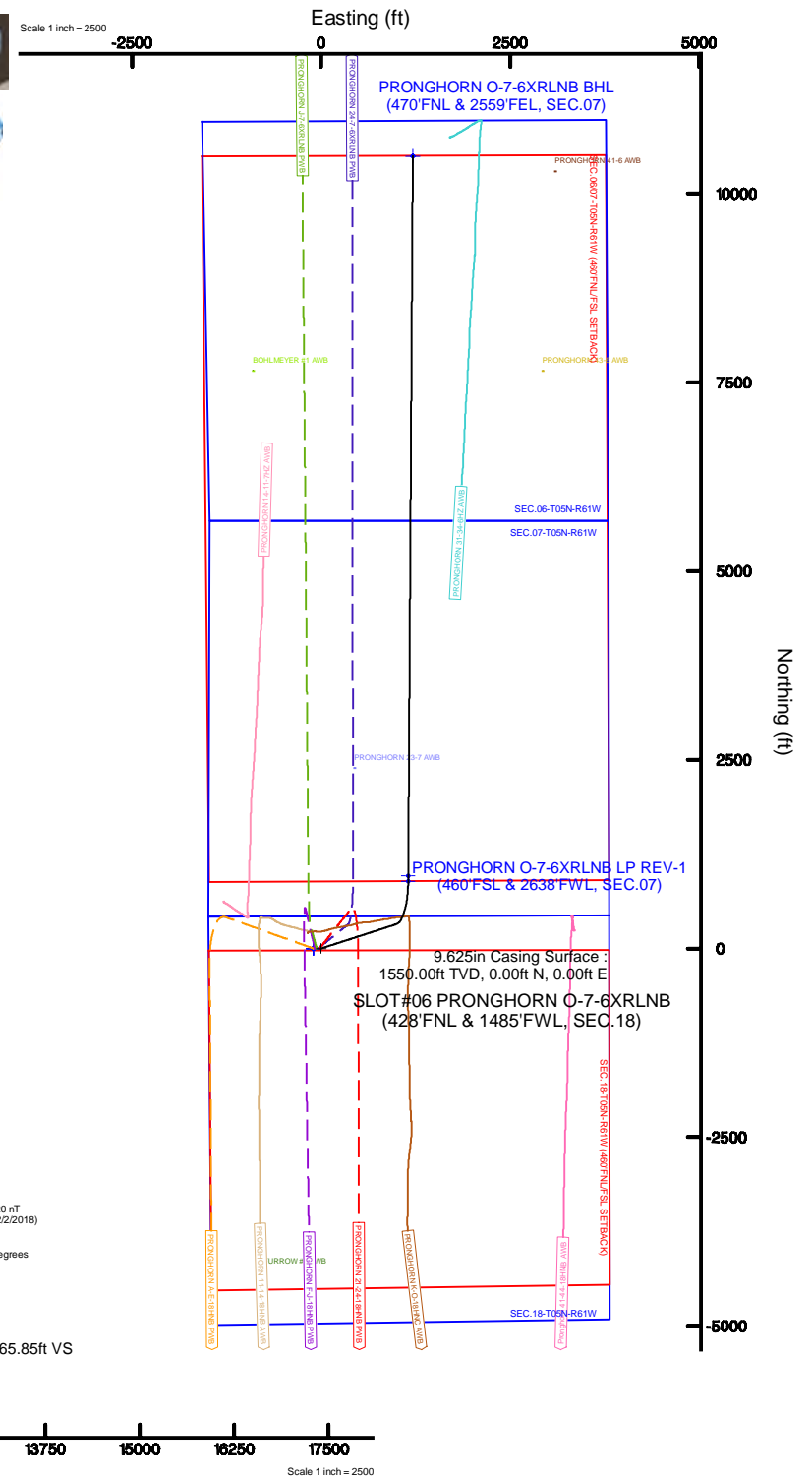
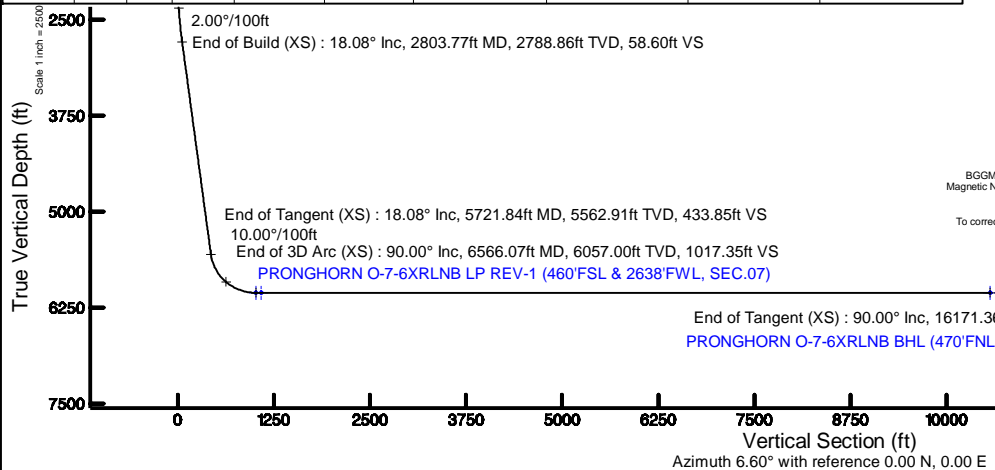
Facility Name				Grid East (US ft)	Grid North (US ft)	Latitude	Longitude
SEC.18-T05N-R61W				3346203.650	1393657.633	40°24'26.388"N	104°15'24.372"W
Spot	Local N (ft)	Local E (ft)	Grid East (US ft)	Grid North (US ft)	Latitude	Longitude	
SLOT#06 PRONGHORN O-7-6XRLNB (428FNL & 1485FWL, SEC.18)	0.00	58.48	3346262.125	1393658.453	40°24'26.388"N	104°15'23.616"W	
RIG (17KB) (RKB) to Mud line (A/Slot: SLOT#06 PRONGHORN O-7-6XRLNB (428FNL & 1485FWL, SEC.18))						4582ft	
Mean Sea Level to Mud line (A/Slot: SLOT#06 PRONGHORN O-7-6XRLNB (428FNL & 1485FWL, SEC.18))						0ft	
RIG (17KB) (RKB) to Mean Sea Level						4582ft	

Design Comment	MD (ft)	Inc (°)	Az (°)	TVD (ft)	Local N (ft)	Local E (ft)	DLS (°/100ft)	VS (ft)
Tie On	17.00	0.000	72.111	17.00	0.00	0.00	0.00	0.00
End of Tangent	1900.00	0.000	72.111	1900.00	0.00	0.00	0.00	0.00
End of Build (XS)	2803.77	18.075	72.111	2788.86	43.43	134.55	2.00	58.60
End of Tangent (XS)	5721.84	18.075	72.111	5562.91	321.55	996.16	0.00	433.85
End of 3D Arc (XS)	6566.07	90.000	0.363	6057.00	890.81	1152.91	10.00	1017.35
End of Tangent (XS)	16171.36	90.000	0.363	6057.00	10495.91	1213.71	0.00	10565.85

Name	Start MD (ft)	End MD (ft)	Interval (ft)	Start TVD (ft)	End TVD (ft)	Start Local N (ft)	Start Local E (ft)	End Local N (ft)	End Local E (ft)	Wellbore
9.625in Casing Surface	17.00	1550.00	1533.00	17.00	1550.00	0.00	0.00	0.00	0.00	PRONGHORN O-7-6XRLNB PWB
8.5in Open Hole	1550.00	16171.36	14621.36	1550.00	6057.00	0.00	0.00	10495.91	1213.71	PRONGHORN O-7-6XRLNB PWB

Start MD (ft)	End MD (ft)	Tool	Model	Log Name/Comment	Wellbore
17.00	1550.00	BHI NavTrak	Custom BHI NavTrak (Standard Rotating+Axial Corf) (Rockies 0.03Gt model)		PRONGHORN C-7-6XRLNB PWB
1550.00	16171.36	BHI AutoTrak Curve	Custom BHI AutoTrak Curve (Axial Corf, Short spacing) (Rockies 0.03Gt model)		PRONGHORN C-7-6XRLNB PWB

MD (ft)	Inc (°)	Az (°)	TVD (ft)	Local N (ft)	Local E (ft)	Grid East (US ft)	Grid North (US ft)	Latitude	Longitude
16171.36	90.000	0.363	6057.00	10495.91	1213.71	3347328.50	1404169.91	40°26'10.104"N	104°1'507.920"W





# Planned Wellpath Report

## PRONGHORN O-7-6XRLNB PWP (REV-A.0)

Page 1 of 9



### REFERENCE WELLPATH IDENTIFICATION

Operator	BONANZA CREEK OIL COMPANY	Slot	SLOT#06 PRONGHORN O-7-6XRLNB (428'FNL & 1485'FWL, SEC.18)
Area	COLORADO	Well	PRONGHORN O-7-6XRLNB
Field	WELD COUNTY	Wellbore	PRONGHORN O-7-6XRLNB PWB
Facility	SEC.18-T05N-R61W		

### REPORT SETUP INFORMATION

Projection System	NAD83 / Lambert Colorado SP, Northern Zone (501), US feet	Software System	WellArchitect® 5.0
North Reference	True	User	Ingmjmr
Scale	0.999961	Report Generated	2/8/2018 at 10:01:52 AM
Convergence at slot	0.81° East	Database/Source file	Denver/PRONGHORN_O-7-6XRLNB_PWP__REV-A.0_.xml

### WELLPATH LOCATION

	Local coordinates		Grid coordinates		Geographic coordinates	
	North[ft]	East[ft]	Easting[US ft]	Northing[US ft]	Latitude	Longitude
Slot Location	0.00	58.48	3346262.13	1393658.45	40°24'26.388"N	104°15'23.616"W
Facility Reference Pt			3346203.65	1393657.63	40°24'26.388"N	104°15'24.372"W
Field Reference Pt			3224525.77	1254425.87	40°01'44.400"N	104°41'53.556"W

### WELLPATH DATUM

Calculation method	Minimum curvature	RIG (17'KB) (RKB) to Facility Vertical Datum	4582.00ft
Horizontal Reference Pt	Slot	RIG (17'KB) (RKB) to Mean Sea Level	4582.00ft
Vertical Reference Pt	RIG (17'KB) (RKB)	RIG (17'KB) (RKB) to Mud Line at Slot (SLOT#06 PRONGHORN O-7-6XRLNB (428'FNL & 1485'FWL, SEC.18))	4582.00ft
MD Reference Pt	RIG (17'KB) (RKB)	Section Origin	N 0.00, E 0.00 ft
Field Vertical Reference	Mean Sea Level	Section Azimuth	6.60°



# Planned Wellpath Report

## PRONGHORN O-7-6XRLNB PWP (REV-A.0)

Page 2 of 9



REFERENCE WELLPATH IDENTIFICATION			
Operator	BONANZA CREEK OIL COMPANY	Slot	SLOT#06 PRONGHORN O-7-6XRLNB (428'FNL & 1485'FWL, SEC.18)
Area	COLORADO	Well	PRONGHORN O-7-6XRLNB
Field	WELD COUNTY	Wellbore	PRONGHORN O-7-6XRLNB PWB
Facility	SEC.18-T05N-R61W		

WELLPATH DATA (168 stations) † = interpolated/extrapolated station										
MD [ft]	Inclination [°]	Azimuth [°]	TVD [ft]	Vert Sect [ft]	North [ft]	East [ft]	Latitude	Longitude	DLS [°/100ft]	Comments
0.00†	0.000	72.111	0.00	0.00	0.00	0.00	40°24'26.388"N	104°15'23.616"W	0.00	
17.00	0.000	72.111	17.00	0.00	0.00	0.00	40°24'26.388"N	104°15'23.616"W	0.00	Tie On
117.00†	0.000	72.111	117.00	0.00	0.00	0.00	40°24'26.388"N	104°15'23.616"W	0.00	
217.00†	0.000	72.111	217.00	0.00	0.00	0.00	40°24'26.388"N	104°15'23.616"W	0.00	
317.00†	0.000	72.111	317.00	0.00	0.00	0.00	40°24'26.388"N	104°15'23.616"W	0.00	
417.00†	0.000	72.111	417.00	0.00	0.00	0.00	40°24'26.388"N	104°15'23.616"W	0.00	
517.00†	0.000	72.111	517.00	0.00	0.00	0.00	40°24'26.388"N	104°15'23.616"W	0.00	
617.00†	0.000	72.111	617.00	0.00	0.00	0.00	40°24'26.388"N	104°15'23.616"W	0.00	
717.00†	0.000	72.111	717.00	0.00	0.00	0.00	40°24'26.388"N	104°15'23.616"W	0.00	
817.00†	0.000	72.111	817.00	0.00	0.00	0.00	40°24'26.388"N	104°15'23.616"W	0.00	
917.00†	0.000	72.111	917.00	0.00	0.00	0.00	40°24'26.388"N	104°15'23.616"W	0.00	
1017.00†	0.000	72.111	1017.00	0.00	0.00	0.00	40°24'26.388"N	104°15'23.616"W	0.00	
1117.00†	0.000	72.111	1117.00	0.00	0.00	0.00	40°24'26.388"N	104°15'23.616"W	0.00	
1217.00†	0.000	72.111	1217.00	0.00	0.00	0.00	40°24'26.388"N	104°15'23.616"W	0.00	
1317.00†	0.000	72.111	1317.00	0.00	0.00	0.00	40°24'26.388"N	104°15'23.616"W	0.00	
1417.00†	0.000	72.111	1417.00	0.00	0.00	0.00	40°24'26.388"N	104°15'23.616"W	0.00	
1517.00†	0.000	72.111	1517.00	0.00	0.00	0.00	40°24'26.388"N	104°15'23.616"W	0.00	
1617.00†	0.000	72.111	1617.00	0.00	0.00	0.00	40°24'26.388"N	104°15'23.616"W	0.00	
1717.00†	0.000	72.111	1717.00	0.00	0.00	0.00	40°24'26.388"N	104°15'23.616"W	0.00	
1817.00†	0.000	72.111	1817.00	0.00	0.00	0.00	40°24'26.388"N	104°15'23.616"W	0.00	
1900.00	0.000	72.111	1900.00	0.00	0.00	0.00	40°24'26.388"N	104°15'23.616"W	0.00	End of Tangent
1917.00†	0.340	72.111	1917.00	0.02	0.02	0.05	40°24'26.388"N	104°15'23.615"W	2.00	
2017.00†	2.340	72.111	2016.97	0.99	0.73	2.27	40°24'26.395"N	104°15'23.587"W	2.00	
2117.00†	4.340	72.111	2116.79	3.40	2.52	7.82	40°24'26.413"N	104°15'23.515"W	2.00	
2217.00†	6.340	72.111	2216.35	7.26	5.38	16.67	40°24'26.441"N	104°15'23.400"W	2.00	
2317.00†	8.340	72.111	2315.53	12.56	9.31	28.83	40°24'26.480"N	104°15'23.243"W	2.00	
2417.00†	10.340	72.111	2414.20	19.28	14.29	44.27	40°24'26.529"N	104°15'23.044"W	2.00	
2517.00†	12.340	72.111	2512.24	27.43	20.33	62.99	40°24'26.589"N	104°15'22.802"W	2.00	
2617.00†	14.340	72.111	2609.54	36.99	27.42	84.94	40°24'26.659"N	104°15'22.518"W	2.00	
2717.00†	16.340	72.111	2705.97	47.96	35.54	110.12	40°24'26.739"N	104°15'22.193"W	2.00	



# Planned Wellpath Report

## PRONGHORN O-7-6XRLNB PWP (REV-A.0)

Page 3 of 9



REFERENCE WELLPATH IDENTIFICATION			
Operator	BONANZA CREEK OIL COMPANY	Slot	SLOT#06 PRONGHORN O-7-6XRLNB (428'FNL & 1485'FWL, SEC.18)
Area	COLORADO	Well	PRONGHORN O-7-6XRLNB
Field	WELD COUNTY	Wellbore	PRONGHORN O-7-6XRLNB PWB
Facility	SEC.18-T05N-R61W		

### WELLPATH DATA (168 stations) † = interpolated/extrapolated station

MD [ft]	Inclination [°]	Azimuth [°]	TVD [ft]	Vert Sect [ft]	North [ft]	East [ft]	Latitude	Longitude	DLS [°/100ft]	Comments
2803.77	18.075	72.111	2788.86	58.60	43.43	134.55	40°24'26.817"N	104°15'21.877"W	2.00	End of Build (XS)
2817.00†	18.075	72.111	2801.43	60.30	44.69	138.45	40°24'26.830"N	104°15'21.826"W	0.00	
2917.00†	18.075	72.111	2896.50	73.16	54.22	167.98	40°24'26.924"N	104°15'21.445"W	0.00	
3017.00†	18.075	72.111	2991.56	86.02	63.75	197.50	40°24'27.018"N	104°15'21.063"W	0.00	
3117.00†	18.075	72.111	3086.62	98.88	73.28	227.03	40°24'27.112"N	104°15'20.681"W	0.00	
3217.00†	18.075	72.111	3181.69	111.74	82.81	256.56	40°24'27.206"N	104°15'20.300"W	0.00	
3317.00†	18.075	72.111	3276.75	124.60	92.34	286.09	40°24'27.300"N	104°15'19.918"W	0.00	
3417.00†	18.075	72.111	3371.82	137.46	101.88	315.61	40°24'27.395"N	104°15'19.536"W	0.00	
3517.00†	18.075	72.111	3466.88	150.32	111.41	345.14	40°24'27.489"N	104°15'19.154"W	0.00	
3617.00†	18.075	72.111	3561.95	163.17	120.94	374.67	40°24'27.583"N	104°15'18.773"W	0.00	
3717.00†	18.075	72.111	3657.01	176.03	130.47	404.19	40°24'27.677"N	104°15'18.391"W	0.00	
3817.00†	18.075	72.111	3752.08	188.89	140.00	433.72	40°24'27.771"N	104°15'18.009"W	0.00	
3917.00†	18.075	72.111	3847.14	201.75	149.53	463.25	40°24'27.866"N	104°15'17.628"W	0.00	
4017.00†	18.075	72.111	3942.21	214.61	159.06	492.77	40°24'27.960"N	104°15'17.246"W	0.00	
4117.00†	18.075	72.111	4037.27	227.47	168.59	522.30	40°24'28.054"N	104°15'16.864"W	0.00	
4217.00†	18.075	72.111	4132.34	240.33	178.12	551.83	40°24'28.148"N	104°15'16.483"W	0.00	
4317.00†	18.075	72.111	4227.40	253.19	187.65	581.35	40°24'28.242"N	104°15'16.101"W	0.00	
4417.00†	18.075	72.111	4322.47	266.05	197.18	610.88	40°24'28.336"N	104°15'15.719"W	0.00	
4517.00†	18.075	72.111	4417.53	278.91	206.72	640.41	40°24'28.431"N	104°15'15.338"W	0.00	
4617.00†	18.075	72.111	4512.60	291.77	216.25	669.93	40°24'28.525"N	104°15'14.956"W	0.00	
4717.00†	18.075	72.111	4607.66	304.63	225.78	699.46	40°24'28.619"N	104°15'14.574"W	0.00	
4817.00†	18.075	72.111	4702.73	317.49	235.31	728.99	40°24'28.713"N	104°15'14.192"W	0.00	
4917.00†	18.075	72.111	4797.79	330.35	244.84	758.52	40°24'28.807"N	104°15'13.811"W	0.00	
5017.00†	18.075	72.111	4892.86	343.21	254.37	788.04	40°24'28.901"N	104°15'13.429"W	0.00	
5117.00†	18.075	72.111	4987.92	356.07	263.90	817.57	40°24'28.996"N	104°15'13.047"W	0.00	
5217.00†	18.075	72.111	5082.99	368.93	273.43	847.10	40°24'29.090"N	104°15'12.666"W	0.00	
5317.00†	18.075	72.111	5178.05	381.79	282.96	876.62	40°24'29.184"N	104°15'12.284"W	0.00	
5417.00†	18.075	72.111	5273.12	394.65	292.49	906.15	40°24'29.278"N	104°15'11.902"W	0.00	
5517.00†	18.075	72.111	5368.18	407.51	302.02	935.68	40°24'29.372"N	104°15'11.521"W	0.00	
5617.00†	18.075	72.111	5463.25	420.37	311.55	965.20	40°24'29.466"N	104°15'11.139"W	0.00	



# Planned Wellpath Report

## PRONGHORN O-7-6XRLNB PWP (REV-A.0)

Page 4 of 9



REFERENCE WELLPATH IDENTIFICATION			
Operator	BONANZA CREEK OIL COMPANY	Slot	SLOT#06 PRONGHORN O-7-6XRLNB (428'FNL & 1485'FWL, SEC.18)
Area	COLORADO	Well	PRONGHORN O-7-6XRLNB
Field	WELD COUNTY	Wellbore	PRONGHORN O-7-6XRLNB PWB
Facility	SEC.18-T05N-R61W		

### WELLPATH DATA (168 stations) † = interpolated/extrapolated station

MD [ft]	Inclination [°]	Azimuth [°]	TVD [ft]	Vert Sect [ft]	North [ft]	East [ft]	Latitude	Longitude	DLS [°/100ft]	Comments
5717.00†	18.075	72.111	5558.31	433.23	321.09	994.73	40°24'29.561"N	104°15'10.757"W	0.00	
5721.84	18.075	72.111	5562.91	433.85	321.55	996.16	40°24'29.565"N	104°15'10.739"W	0.00	End of Tangent (XS)
5817.00†	22.747	48.032	5652.23	453.81	338.42	1023.95	40°24'29.732"N	104°15'10.379"W	10.00	
5917.00†	30.115	32.665	5741.82	490.93	372.56	1051.94	40°24'30.069"N	104°15'10.018"W	10.00	
6017.00†	38.598	23.211	5824.36	543.49	422.47	1077.84	40°24'30.562"N	104°15'09.683"W	10.00	
6117.00†	47.599	16.804	5897.33	609.88	486.65	1100.86	40°24'31.197"N	104°15'09.385"W	10.00	
6217.00†	56.866	12.035	5958.53	688.10	563.14	1120.32	40°24'31.952"N	104°15'09.134"W	10.00	
6317.00†	66.280	8.190	6006.10	775.76	649.62	1135.61	40°24'32.807"N	104°15'08.936"W	10.00	
6417.00†	75.776	4.869	6038.58	870.21	743.46	1146.27	40°24'33.734"N	104°15'08.798"W	10.00	
6517.00†	85.313	1.819	6054.99	968.56	841.80	1151.98	40°24'34.706"N	104°15'08.724"W	10.00	
6566.07	90.000	0.363	6057.00†	1017.35	890.81	1152.91	40°24'35.190"N	104°15'08.712"W	10.00	End of 3D Arc (XS)
6617.00†	90.000	0.363	6057.00	1067.98	941.74	1153.23	40°24'35.694"N	104°15'08.708"W	0.00	
6717.00†	90.000	0.363	6057.00	1167.39	1041.74	1153.87	40°24'36.682"N	104°15'08.700"W	0.00	
6817.00†	90.000	0.363	6057.00	1266.80	1141.73	1154.50	40°24'37.670"N	104°15'08.691"W	0.00	
6917.00†	90.000	0.363	6057.00	1366.20	1241.73	1155.13	40°24'38.658"N	104°15'08.683"W	0.00	
7017.00†	90.000	0.363	6057.00	1465.61	1341.73	1155.77	40°24'39.646"N	104°15'08.675"W	0.00	
7117.00†	90.000	0.363	6057.00	1565.02	1441.73	1156.40	40°24'40.634"N	104°15'08.667"W	0.00	
7217.00†	90.000	0.363	6057.00	1664.43	1541.73	1157.03	40°24'41.622"N	104°15'08.658"W	0.00	
7317.00†	90.000	0.363	6057.00	1763.84	1641.72	1157.66	40°24'42.611"N	104°15'08.650"W	0.00	
7417.00†	90.000	0.363	6057.00	1863.25	1741.72	1158.30	40°24'43.599"N	104°15'08.642"W	0.00	
7517.00†	90.000	0.363	6057.00	1962.66	1841.72	1158.93	40°24'44.587"N	104°15'08.634"W	0.00	
7617.00†	90.000	0.363	6057.00	2062.07	1941.72	1159.56	40°24'45.575"N	104°15'08.625"W	0.00	
7717.00†	90.000	0.363	6057.00	2161.47	2041.72	1160.20	40°24'46.563"N	104°15'08.617"W	0.00	
7817.00†	90.000	0.363	6057.00	2260.88	2141.71	1160.83	40°24'47.551"N	104°15'08.609"W	0.00	
7917.00†	90.000	0.363	6057.00	2360.29	2241.71	1161.46	40°24'48.539"N	104°15'08.601"W	0.00	
8017.00†	90.000	0.363	6057.00	2459.70	2341.71	1162.09	40°24'49.528"N	104°15'08.592"W	0.00	
8117.00†	90.000	0.363	6057.00	2559.11	2441.71	1162.73	40°24'50.516"N	104°15'08.584"W	0.00	
8217.00†	90.000	0.363	6057.00	2658.52	2541.71	1163.36	40°24'51.504"N	104°15'08.576"W	0.00	
8317.00†	90.000	0.363	6057.00	2757.93	2641.70	1163.99	40°24'52.492"N	104°15'08.568"W	0.00	
8417.00†	90.000	0.363	6057.00	2857.34	2741.70	1164.63	40°24'53.480"N	104°15'08.559"W	0.00	



# Planned Wellpath Report

## PRONGHORN O-7-6XRLNB PWP (REV-A.0)

Page 5 of 9



REFERENCE WELLPATH IDENTIFICATION			
Operator	BONANZA CREEK OIL COMPANY	Slot	SLOT#06 PRONGHORN O-7-6XRLNB (428'FNL & 1485'FWL, SEC.18)
Area	COLORADO	Well	PRONGHORN O-7-6XRLNB
Field	WELD COUNTY	Wellbore	PRONGHORN O-7-6XRLNB PWB
Facility	SEC.18-T05N-R61W		

WELLPATH DATA (168 stations) † = interpolated/extrapolated station										
MD [ft]	Inclination [°]	Azimuth [°]	TVD [ft]	Vert Sect [ft]	North [ft]	East [ft]	Latitude	Longitude	DLS [°/100ft]	Comments
8517.00†	90.000	0.363	6057.00	2956.74	2841.70	1165.26	40°24'54.468"N	104°15'08.551"W	0.00	
8617.00†	90.000	0.363	6057.00	3056.15	2941.70	1165.89	40°24'55.456"N	104°15'08.543"W	0.00	
8717.00†	90.000	0.363	6057.00	3155.56	3041.70	1166.53	40°24'56.445"N	104°15'08.535"W	0.00	
8817.00†	90.000	0.363	6057.00	3254.97	3141.69	1167.16	40°24'57.433"N	104°15'08.526"W	0.00	
8917.00†	90.000	0.363	6057.00	3354.38	3241.69	1167.79	40°24'58.421"N	104°15'08.518"W	0.00	
9017.00†	90.000	0.363	6057.00	3453.79	3341.69	1168.42	40°24'59.409"N	104°15'08.510"W	0.00	
9117.00†	90.000	0.363	6057.00	3553.20	3441.69	1169.06	40°25'00.397"N	104°15'08.502"W	0.00	
9217.00†	90.000	0.363	6057.00	3652.61	3541.69	1169.69	40°25'01.385"N	104°15'08.494"W	0.00	
9317.00†	90.000	0.363	6057.00	3752.01	3641.68	1170.32	40°25'02.373"N	104°15'08.485"W	0.00	
9417.00†	90.000	0.363	6057.00	3851.42	3741.68	1170.96	40°25'03.362"N	104°15'08.477"W	0.00	
9517.00†	90.000	0.363	6057.00	3950.83	3841.68	1171.59	40°25'04.350"N	104°15'08.469"W	0.00	
9617.00†	90.000	0.363	6057.00	4050.24	3941.68	1172.22	40°25'05.338"N	104°15'08.461"W	0.00	
9717.00†	90.000	0.363	6057.00	4149.65	4041.68	1172.85	40°25'06.326"N	104°15'08.452"W	0.00	
9817.00†	90.000	0.363	6057.00	4249.06	4141.67	1173.49	40°25'07.314"N	104°15'08.444"W	0.00	
9917.00†	90.000	0.363	6057.00	4348.47	4241.67	1174.12	40°25'08.302"N	104°15'08.436"W	0.00	
10017.00†	90.000	0.363	6057.00	4447.88	4341.67	1174.75	40°25'09.290"N	104°15'08.428"W	0.00	
10117.00†	90.000	0.363	6057.00	4547.28	4441.67	1175.39	40°25'10.279"N	104°15'08.419"W	0.00	
10217.00†	90.000	0.363	6057.00	4646.69	4541.67	1176.02	40°25'11.267"N	104°15'08.411"W	0.00	
10317.00†	90.000	0.363	6057.00	4746.10	4641.66	1176.65	40°25'12.255"N	104°15'08.403"W	0.00	
10417.00†	90.000	0.363	6057.00	4845.51	4741.66	1177.29	40°25'13.243"N	104°15'08.395"W	0.00	
10517.00†	90.000	0.363	6057.00	4944.92	4841.66	1177.92	40°25'14.231"N	104°15'08.386"W	0.00	
10617.00†	90.000	0.363	6057.00	5044.33	4941.66	1178.55	40°25'15.219"N	104°15'08.378"W	0.00	
10717.00†	90.000	0.363	6057.00	5143.74	5041.66	1179.18	40°25'16.207"N	104°15'08.370"W	0.00	
10817.00†	90.000	0.363	6057.00	5243.15	5141.65	1179.82	40°25'17.196"N	104°15'08.362"W	0.00	
10917.00†	90.000	0.363	6057.00	5342.55	5241.65	1180.45	40°25'18.184"N	104°15'08.353"W	0.00	
11017.00†	90.000	0.363	6057.00	5441.96	5341.65	1181.08	40°25'19.172"N	104°15'08.345"W	0.00	
11117.00†	90.000	0.363	6057.00	5541.37	5441.65	1181.72	40°25'20.160"N	104°15'08.337"W	0.00	
11217.00†	90.000	0.363	6057.00	5640.78	5541.65	1182.35	40°25'21.148"N	104°15'08.329"W	0.00	
11317.00†	90.000	0.363	6057.00	5740.19	5641.64	1182.98	40°25'22.136"N	104°15'08.320"W	0.00	
11417.00†	90.000	0.363	6057.00	5839.60	5741.64	1183.62	40°25'23.124"N	104°15'08.312"W	0.00	





# Planned Wellpath Report

## PRONGHORN O-7-6XRLNB PWP (REV-A.0)

Page 6 of 9



REFERENCE WELLPATH IDENTIFICATION			
Operator	BONANZA CREEK OIL COMPANY	Slot	SLOT#06 PRONGHORN O-7-6XRLNB (428'FNL & 1485'FWL, SEC.18)
Area	COLORADO	Well	PRONGHORN O-7-6XRLNB
Field	WELD COUNTY	Wellbore	PRONGHORN O-7-6XRLNB PWB
Facility	SEC.18-T05N-R61W		

WELLPATH DATA (168 stations) † = interpolated/extrapolated station										
MD [ft]	Inclination [°]	Azimuth [°]	TVD [ft]	Vert Sect [ft]	North [ft]	East [ft]	Latitude	Longitude	DLS [°/100ft]	Comments
11517.00†	90.000	0.363	6057.00	5939.01	5841.64	1184.25	40°25'24.113"N	104°15'08.304"W	0.00	
11617.00†	90.000	0.363	6057.00	6038.42	5941.64	1184.88	40°25'25.101"N	104°15'08.296"W	0.00	
11717.00†	90.000	0.363	6057.00	6137.82	6041.64	1185.51	40°25'26.089"N	104°15'08.287"W	0.00	
11817.00†	90.000	0.363	6057.00	6237.23	6141.63	1186.15	40°25'27.077"N	104°15'08.279"W	0.00	
11917.00†	90.000	0.363	6057.00	6336.64	6241.63	1186.78	40°25'28.065"N	104°15'08.271"W	0.00	
12017.00†	90.000	0.363	6057.00	6436.05	6341.63	1187.41	40°25'29.053"N	104°15'08.263"W	0.00	
12117.00†	90.000	0.363	6057.00	6535.46	6441.63	1188.05	40°25'30.041"N	104°15'08.254"W	0.00	
12217.00†	90.000	0.363	6057.00	6634.87	6541.63	1188.68	40°25'31.029"N	104°15'08.246"W	0.00	
12317.00†	90.000	0.363	6057.00	6734.28	6641.62	1189.31	40°25'32.018"N	104°15'08.238"W	0.00	
12417.00†	90.000	0.363	6057.00	6833.69	6741.62	1189.94	40°25'33.006"N	104°15'08.230"W	0.00	
12517.00†	90.000	0.363	6057.00	6933.09	6841.62	1190.58	40°25'33.994"N	104°15'08.221"W	0.00	
12617.00†	90.000	0.363	6057.00	7032.50	6941.62	1191.21	40°25'34.982"N	104°15'08.213"W	0.00	
12717.00†	90.000	0.363	6057.00	7131.91	7041.62	1191.84	40°25'35.970"N	104°15'08.205"W	0.00	
12817.00†	90.000	0.363	6057.00	7231.32	7141.61	1192.48	40°25'36.958"N	104°15'08.197"W	0.00	
12917.00†	90.000	0.363	6057.00	7330.73	7241.61	1193.11	40°25'37.946"N	104°15'08.188"W	0.00	
13017.00†	90.000	0.363	6057.00	7430.14	7341.61	1193.74	40°25'38.935"N	104°15'08.180"W	0.00	
13117.00†	90.000	0.363	6057.00	7529.55	7441.61	1194.38	40°25'39.923"N	104°15'08.172"W	0.00	
13217.00†	90.000	0.363	6057.00	7628.96	7541.61	1195.01	40°25'40.911"N	104°15'08.164"W	0.00	
13317.00†	90.000	0.363	6057.00	7728.37	7641.60	1195.64	40°25'41.899"N	104°15'08.155"W	0.00	
13417.00†	90.000	0.363	6057.00	7827.77	7741.60	1196.27	40°25'42.887"N	104°15'08.147"W	0.00	
13517.00†	90.000	0.363	6057.00	7927.18	7841.60	1196.91	40°25'43.875"N	104°15'08.139"W	0.00	
13617.00†	90.000	0.363	6057.00	8026.59	7941.60	1197.54	40°25'44.863"N	104°15'08.131"W	0.00	
13717.00†	90.000	0.363	6057.00	8126.00	8041.60	1198.17	40°25'45.852"N	104°15'08.122"W	0.00	
13817.00†	90.000	0.363	6057.00	8225.41	8141.59	1198.81	40°25'46.840"N	104°15'08.114"W	0.00	
13917.00†	90.000	0.363	6057.00	8324.82	8241.59	1199.44	40°25'47.828"N	104°15'08.106"W	0.00	
14017.00†	90.000	0.363	6057.00	8424.23	8341.59	1200.07	40°25'48.816"N	104°15'08.098"W	0.00	
14117.00†	90.000	0.363	6057.00	8523.64	8441.59	1200.70	40°25'49.804"N	104°15'08.089"W	0.00	
14217.00†	90.000	0.363	6057.00	8623.04	8541.59	1201.34	40°25'50.792"N	104°15'08.081"W	0.00	
14317.00†	90.000	0.363	6057.00	8722.45	8641.58	1201.97	40°25'51.780"N	104°15'08.073"W	0.00	
14417.00†	90.000	0.363	6057.00	8821.86	8741.58	1202.60	40°25'52.769"N	104°15'08.065"W	0.00	



# Planned Wellpath Report

## PRONGHORN O-7-6XRLNB PWP (REV-A.0)

Page 7 of 9



REFERENCE WELLPATH IDENTIFICATION			
Operator	BONANZA CREEK OIL COMPANY	Slot	SLOT#06 PRONGHORN O-7-6XRLNB (428'FNL & 1485'FWL, SEC.18)
Area	COLORADO	Well	PRONGHORN O-7-6XRLNB
Field	WELD COUNTY	Wellbore	PRONGHORN O-7-6XRLNB PWB
Facility	SEC.18-T05N-R61W		

WELLPATH DATA (168 stations) † = interpolated/extrapolated station										
MD [ft]	Inclination [°]	Azimuth [°]	TVD [ft]	Vert Sect [ft]	North [ft]	East [ft]	Latitude	Longitude	DLS [°/100ft]	Comments
14517.00†	90.000	0.363	6057.00	8921.27	8841.58	1203.24	40°25'53.757"N	104°15'08.056"W	0.00	
14617.00†	90.000	0.363	6057.00	9020.68	8941.58	1203.87	40°25'54.745"N	104°15'08.048"W	0.00	
14717.00†	90.000	0.363	6057.00	9120.09	9041.58	1204.50	40°25'55.733"N	104°15'08.040"W	0.00	
14817.00†	90.000	0.363	6057.00	9219.50	9141.57	1205.14	40°25'56.721"N	104°15'08.032"W	0.00	
14917.00†	90.000	0.363	6057.00	9318.91	9241.57	1205.77	40°25'57.709"N	104°15'08.023"W	0.00	
15017.00†	90.000	0.363	6057.00	9418.31	9341.57	1206.40	40°25'58.697"N	104°15'08.015"W	0.00	
15117.00†	90.000	0.363	6057.00	9517.72	9441.57	1207.03	40°25'59.685"N	104°15'08.007"W	0.00	
15217.00†	90.000	0.363	6057.00	9617.13	9541.57	1207.67	40°26'00.674"N	104°15'07.999"W	0.00	
15317.00†	90.000	0.363	6057.00	9716.54	9641.56	1208.30	40°26'01.662"N	104°15'07.990"W	0.00	
15417.00†	90.000	0.363	6057.00	9815.95	9741.56	1208.93	40°26'02.650"N	104°15'07.982"W	0.00	
15517.00†	90.000	0.363	6057.00	9915.36	9841.56	1209.57	40°26'03.638"N	104°15'07.974"W	0.00	
15617.00†	90.000	0.363	6057.00	10014.77	9941.56	1210.20	40°26'04.626"N	104°15'07.966"W	0.00	
15717.00†	90.000	0.363	6057.00	10114.18	10041.56	1210.83	40°26'05.614"N	104°15'07.957"W	0.00	
15817.00†	90.000	0.363	6057.00	10213.58	10141.55	1211.47	40°26'06.602"N	104°15'07.949"W	0.00	
15917.00†	90.000	0.363	6057.00	10312.99	10241.55	1212.10	40°26'07.591"N	104°15'07.941"W	0.00	
16017.00†	90.000	0.363	6057.00	10412.40	10341.55	1212.73	40°26'08.579"N	104°15'07.933"W	0.00	
16117.00†	90.000	0.363	6057.00	10511.81	10441.55	1213.36	40°26'09.567"N	104°15'07.924"W	0.00	
16171.36	90.000	0.363	6057.00 <sup>2</sup>	10565.85	10495.91	1213.71	40°26'10.104"N	104°15'07.920"W	0.00	End of Tangent (XS)

HOLE & CASING SECTIONS - Ref Wellbore: PRONGHORN O-7-6XRLNB PWB Ref Wellpath: PRONGHORN O-7-6XRLNB PWP (REV-A.0)									
String/Diameter	Start MD [ft]	End MD [ft]	Interval [ft]	Start TVD [ft]	End TVD [ft]	Start N/S [ft]	Start E/W [ft]	End N/S [ft]	End E/W [ft]
9.625in Casing Surface	17.00	1550.00	1533.00	17.00	1550.00	0.00	0.00	0.00	0.00
8.5in Open Hole	1550.00	16171.36	14621.36	1550.00	6057.00	0.00	0.00	10495.91	1213.71





# Planned Wellpath Report

## PRONGHORN O-7-6XRLNB PWP (REV-A.0)

Page 8 of 9



REFERENCE WELLPATH IDENTIFICATION			
Operator	BONANZA CREEK OIL COMPANY	Slot	SLOT#06 PRONGHORN O-7-6XRLNB (428'FNL & 1485'FWL, SEC.18)
Area	COLORADO	Well	PRONGHORN O-7-6XRLNB
Field	WELD COUNTY	Wellbore	PRONGHORN O-7-6XRLNB PWB
Facility	SEC.18-T05N-R61W		

TARGETS									
Name	MD [ft]	TVD [ft]	North [ft]	East [ft]	Grid East [US ft]	Grid North [US ft]	Latitude	Longitude	Shape
SEC.06-T05N-R61W		0.00	0.00	-100.26	3346161.88	1393657.05	40°24'26.388"N	104°15'24.912"W	polygon
SEC.07-T05N-R61W		0.00	0.00	-100.26	3346161.88	1393657.05	40°24'26.388"N	104°15'24.912"W	polygon
SEC.18-T05N-R61W		0.00	0.00	-100.26	3346161.88	1393657.05	40°24'26.388"N	104°15'24.912"W	polygon
2) PRONGHORN O-7-6XRLNB BHL (470'FNL & 2559'FEL, SEC.07)	16171.36	6057.00	10495.91	1213.71	3347328.50	1404169.91	40°26'10.104"N	104°15'07.920"W	point
PRONGHORN O-7-6XRLNB LP (531'FSL & 2638'FWL, SEC.07)		6057.00	961.81	1152.91	3347401.39	1394636.30	40°24'35.892"N	104°15'08.712"W	point
1) PRONGHORN O-7-6XRLNB LP REV-1 (460'FSL & 2638'FWL, SEC.07)	6566.07	6057.00	890.81	1152.91	3347402.38	1394565.31	40°24'35.190"N	104°15'08.712"W	point
SEC.06/07-T05N-R61W (460'FNL/FSL SETBACK)		6200.00	0.00	-100.26	3346161.88	1393657.05	40°24'26.388"N	104°15'24.912"W	polygon
SEC.18-T05N-R61W (460'FNL/FSL SETBACK)		6200.00	0.00	-100.26	3346161.88	1393657.05	40°24'26.388"N	104°15'24.912"W	polygon

SURVEY PROGRAM - Ref Wellbore: PRONGHORN O-7-6XRLNB PWB Ref Wellpath: PRONGHORN O-7-6XRLNB PWP (REV-A.0)				
Start MD [ft]	End MD [ft]	Positional Uncertainty Model	Log Name/Comment	Wellbore
17.00	1550.00	Custom BHI NaviTrak (Standard Rotating+Axial Corr) (Rockies 0.03Gt model)		PRONGHORN O-7-6XRLNB PWB
1550.00	16171.36	Custom BHI AutoTrak Curve (Axial Corr, Short spacing) (Rockies 0.03Gt model)		PRONGHORN O-7-6XRLNB PWB



# Planned Wellpath Report

## PRONGHORN O-7-6XRLNB PWP (REV-A.0)

Page 9 of 9



REFERENCE WELLPATH IDENTIFICATION			
Operator	BONANZA CREEK OIL COMPANY	Slot	SLOT#06 PRONGHORN O-7-6XRLNB (428'FNL & 1485'FWL, SEC.18)
Area	COLORADO	Well	PRONGHORN O-7-6XRLNB
Field	WELD COUNTY	Wellbore	PRONGHORN O-7-6XRLNB PWB
Facility	SEC.18-T05N-R61W		

DESIGN COMMENTS				
MD [ft]	Inclination [°]	Azimuth [°]	TVD [ft]	Comment
17.00	0.000	72.111	17.00	Tie On
1900.00	0.000	72.111	1900.00	End of Tangent
2803.77	18.075	72.111	2788.86	End of Build (XS)
5721.84	18.075	72.111	5562.91	End of Tangent (XS)
6566.07	90.000	0.363	6057.00	End of 3D Arc (XS)
16171.36	90.000	0.363	6057.00	End of Tangent (XS)