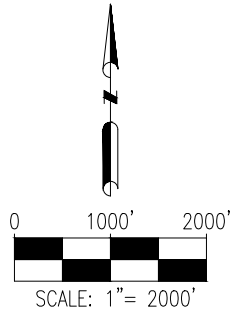
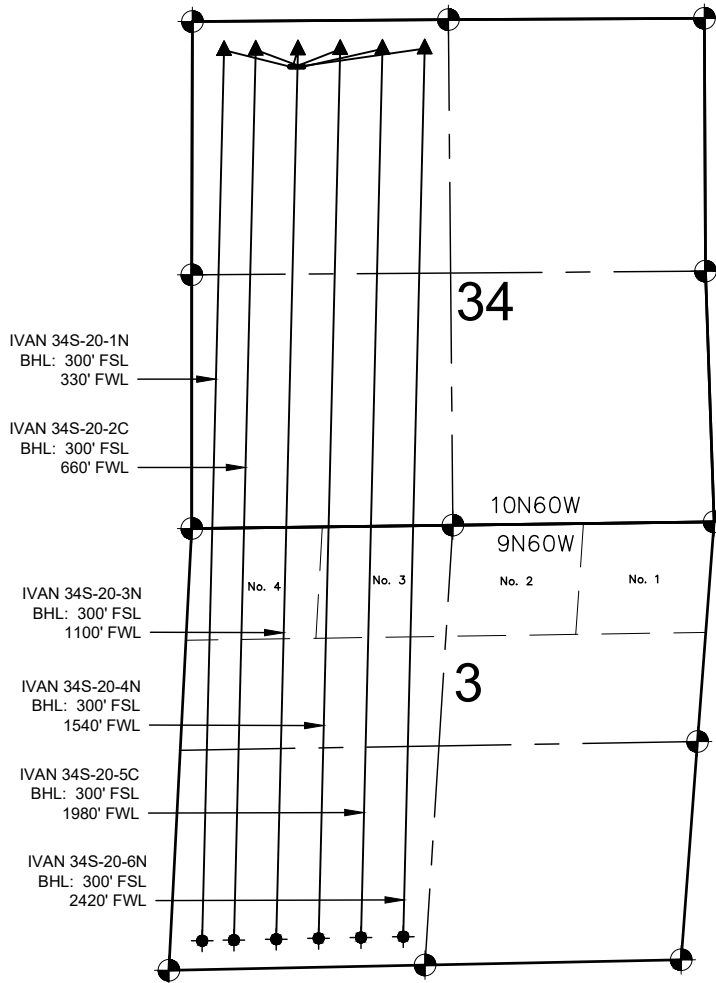


# IVAN 34-A PAD MULTI-WELL PLAN



## LEGEND

- = EXISTING MONUMENT
- = CALCULATED POSITION
- ◆ = PROPOSED WELL
- ◆ = EXISTING WELL
- ▲ = BOTTOM HOLE
- ▲ = LANDING POINT
- BHL = BOTTOM HOLE LOCATION

## NOTES:

- THIS FIELD SURVEY CONFORMS TO THE MINIMUM STANDARDS SET BY THE C.O.G.C.C., RULE NO. 215
- ALL DISTANCES AND BEARINGS SHOWN HEREON ARE GROUND VALUES AS GPS MEASURED IN THE FIELD, WITH TIES TO WELLS MEASURED PERPENDICULAR TO SECTION LINES. THIS LOW DISTORTION PROJECTION (LDP) IS BASED ON THE NORTH AMERICAN DATUM OF 1983, U.S. SURVEY FOOT WITH A LATITUDE ORIGIN OF 40.827841°N, A CENTRAL MERIDIAN LONGITUDE OF 104.088027°W, AND A SCALE FACTOR ON THE CENTRAL MERIDIAN OF 1.000251 (EXACT). THE LDP BASIS OF BEARINGS IS GEODETIC NORTH.
- FIELD VERIFICATION OF MONUMENTS COMPLETED WITHIN 1 YEAR OF SIGNATURE DATE.

- IVAN 34S-20-1N TO BE AT 478' FNL & 1018' FWL.  
BOTTOM HOLE AT 300' FSL & 330' FWL, SEC. 3., 9N60W
- IVAN 34S-20-2C TO BE AT 479' FNL & 1130' FWL.  
BOTTOM HOLE AT 300' FSL & 660' FWL, SEC. 3., 9N60W
- IVAN 34S-20-3N TO BE AT 478' FNL & 1046' FWL.  
BOTTOM HOLE AT 300' FSL & 1100' FWL, SEC. 3., 9N60W
- IVAN 34S-20-4N TO BE AT 478' FNL & 1074' FWL.  
BOTTOM HOLE AT 300' FSL & 1540' FWL, SEC. 3., 9N60W
- IVAN 34S-20-5C TO BE AT 479' FNL & 1158' FWL.  
BOTTOM HOLE AT 300' FSL & 1980' FWL, SEC. 3., 9N60W
- IVAN 34S-20-6N TO BE AT 479' FNL & 1102' FWL.  
BOTTOM HOLE AT 300' FSL & 2420' FWL, SEC. 3., 9N60W