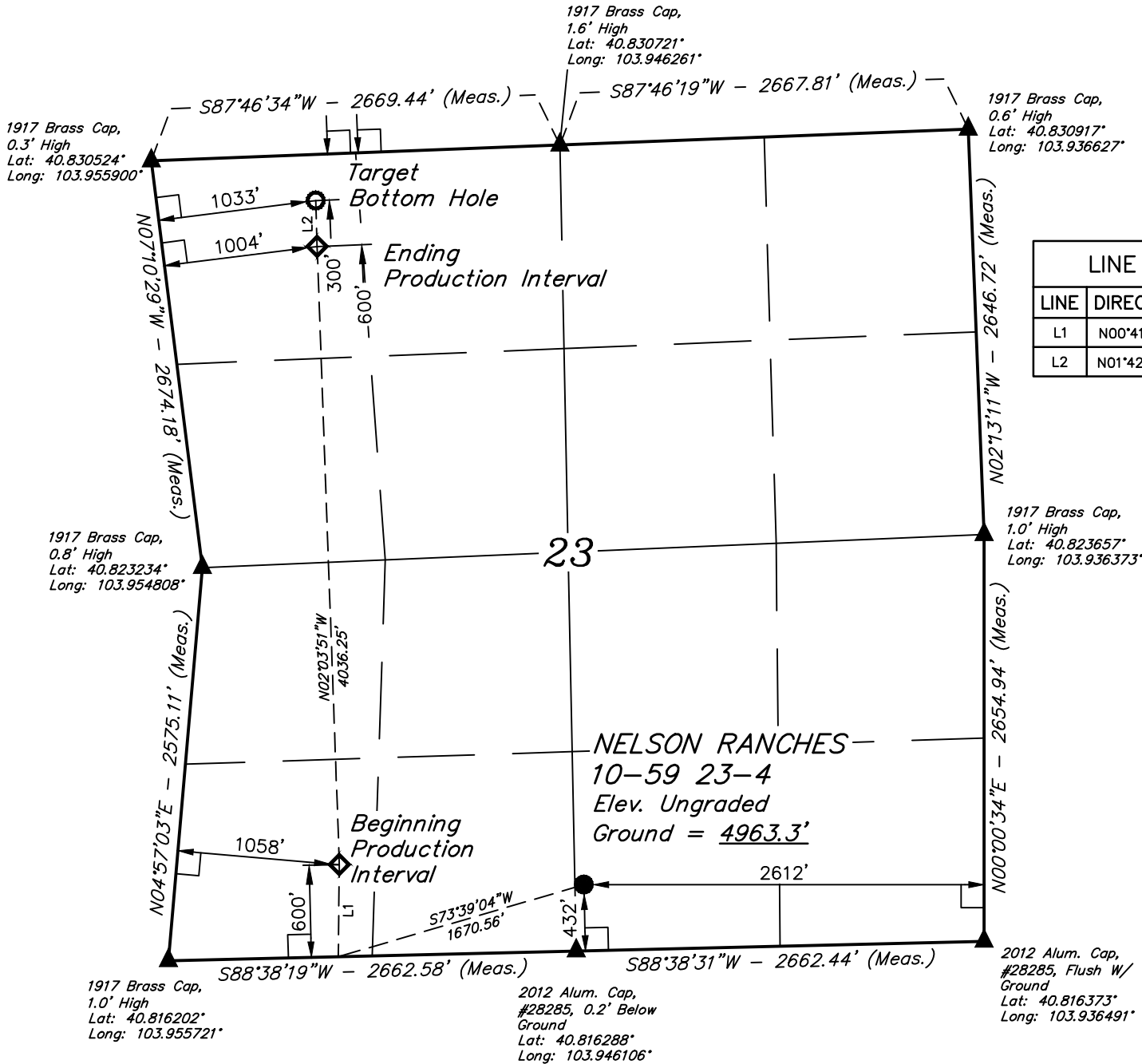


LEGEND:

- = 90° SYMBOL
- = PROPOSED WELLHEAD.
- = PRODUCTION INTERVAL.
- = TARGET BOTTOM HOLE.
- = SECTION CORNERS LOCATED. (NAD 83)

T10N, R59W, 6th P.M.



LINE TABLE		
LINE	DIRECTION	LENGTH
L1	N00°41'38"E	600.39'
L2	N01°42'26"W	300.01'

SURFACE LOCATION 432' FSL 2612' FEL
NAD 83 (SURFACE LOCATION) LATITUDE = 40°49'02.91" (40.817476°) LONGITUDE = 103°56'45.26" (103.945906°)
NAD 27 (SURFACE LOCATION) LATITUDE = 40°49'02.96" (40.817489°) LONGITUDE = 103°56'43.45" (103.945403°)
STATE PLANE NAD 83 (CO. NORTH) N: 1544423.17' E: 3430143.72'
STATE PLANE NAD 27 (CO. NORTH) N: 544421.13' E: 2430294.44'

PDOP = 1.4



BEGINNING PRODUCTION INTERVAL 600' FSL 1058' FWL	ENDING PRODUCTION INTERVAL 600' FNL 1004' FWL	TARGET BOTTOM HOLE 300' FNL 1033' FWL
NAD 83 (BEG. PROD. INTERVAL) LATITUDE = 40°49'04.39" (40.817885°) LONGITUDE = 103°57'05.99" (103.951663°)	NAD 83 (ENDING PROD. INTERVAL) LATITUDE = 40°49'44.24" (40.828957°) LONGITUDE = 103°57'07.25" (103.952014°)	NAD 83 (TARGET BOTTOM HOLE) LATITUDE = 40°49'47.21" (40.829780°) LONGITUDE = 103°57'07.32" (103.952033°)
NAD 27 (BEG. PROD. INTERVAL) LATITUDE = 40°49'04.44" (40.817899°) LONGITUDE = 103°57'04.18" (103.951160°)	NAD 27 (ENDING PROD. INTERVAL) LATITUDE = 40°49'44.29" (40.828970°) LONGITUDE = 103°57'05.44" (103.951511°)	NAD 27 (TARGET BOTTOM HOLE) LATITUDE = 40°49'47.26" (40.829793°) LONGITUDE = 103°57'05.51" (103.951530°)
STATE PLANE NAD 83 (CO. NORTH) N: 1544544.46' E: 3428547.81'	STATE PLANE NAD 83 (CO. NORTH) N: 1548575.94' E: 3428380.30'	STATE PLANE NAD 83 (CO. NORTH) N: 1548875.67' E: 3428369.72'
STATE PLANE NAD 27 (CO. NORTH) N: 544542.41' E: 2428698.49'	STATE PLANE NAD 27 (CO. NORTH) N: 548573.87' E: 2428530.96'	STATE PLANE NAD 27 (CO. NORTH) N: 548873.60' E: 2428520.37'

CERTIFICATE
THIS IS TO CERTIFY THAT THE ABOVE SURVEY WAS PREPARED FROM FIELD NOTES OF ACTUAL SURVEYS MADE BY ME OR UNDER MY SUPERVISION, AND THAT THE SAME ARE TRUE AND CORRECT TO THE BEST OF MY KNOWLEDGE AND BELIEF.



REV: 2 05-29-18 D.J.W. (FOOTAGE CORRECTION)

BASIS OF BEARINGS
TRANSVERSE MERCATOR PROJECTION
WITH A CENTRAL MERIDIAN OF W105°00'00".

BASIS OF ELEVATION
OPUS SOLUTION GENERATED NAVD 88



UELS, LLC
Corporate Office * 85 South 200 East
Vernal, UT 84078 * (435) 789-1017



BISON OIL & GAS II
NELSON RANCHES 10-59 23-4
SW 1/4 SE 1/4, SECTION 23, T10N, R59W, 6th P.M.
WELD COUNTY, COLORADO

SURVEYED BY	JAMES FRESHWATER, N.W.	04-06-18	SCALE
DRAWN BY	C.IVIE	04-16-18	1" = 1000'

WELL LOCATION PLAT