



Kerr-McGee Oil & Gas Onshore LP

A subsidiary of Anadarko Petroleum Corporation

1099 18th Street
Denver, CO 80202
720-929-6000

May 15, 2018

Julie Murphy
Director, Colorado Oil and Gas Conservation Commission
Department of Natural Resources
The Chancery Building
1120 Lincoln Street, Suite 801
Denver, CO 80203

Re: **30 Day Certification Letter - 318A.e**
Sharon 21-1HZ (Doc # 401624419)
Township 4 North, Range 67 West
Section 21: NESW
Unit Acreage: 800
Proposed Spacing Unit:
SEC 16:S2SW, SWSE;
SEC 17:S2S2;
SEC 18:S2SE, SESW;
SEC 19:N2NE, NENW;
SEC 20:N2N2;
SEC 21:N2NW, NWNE
Weld County, Colorado

Dear Director Murphy:

Kerr-McGee Oil and Gas Onshore LP ("KMG") hereby certifies that a thirty (30) day notice was sent to 14 mineral owners by certified mail. We have not received any objections to such well location, proposed spacing unit, or additional producing formation from the delivered 11 Notices. The undeliverable notices have a combined working interest of 0.096938%. KMG hereby respectfully requests approval of this well.

If you have any questions or issues regarding this permit, please contact John Piekara at (720) 929-3094.

Sincerely,

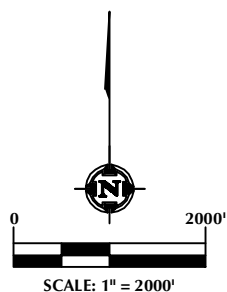
KERR-McGEE OIL AND GAS ONSHORE LP

A handwritten signature in black ink, appearing to read 'John Piekara'.

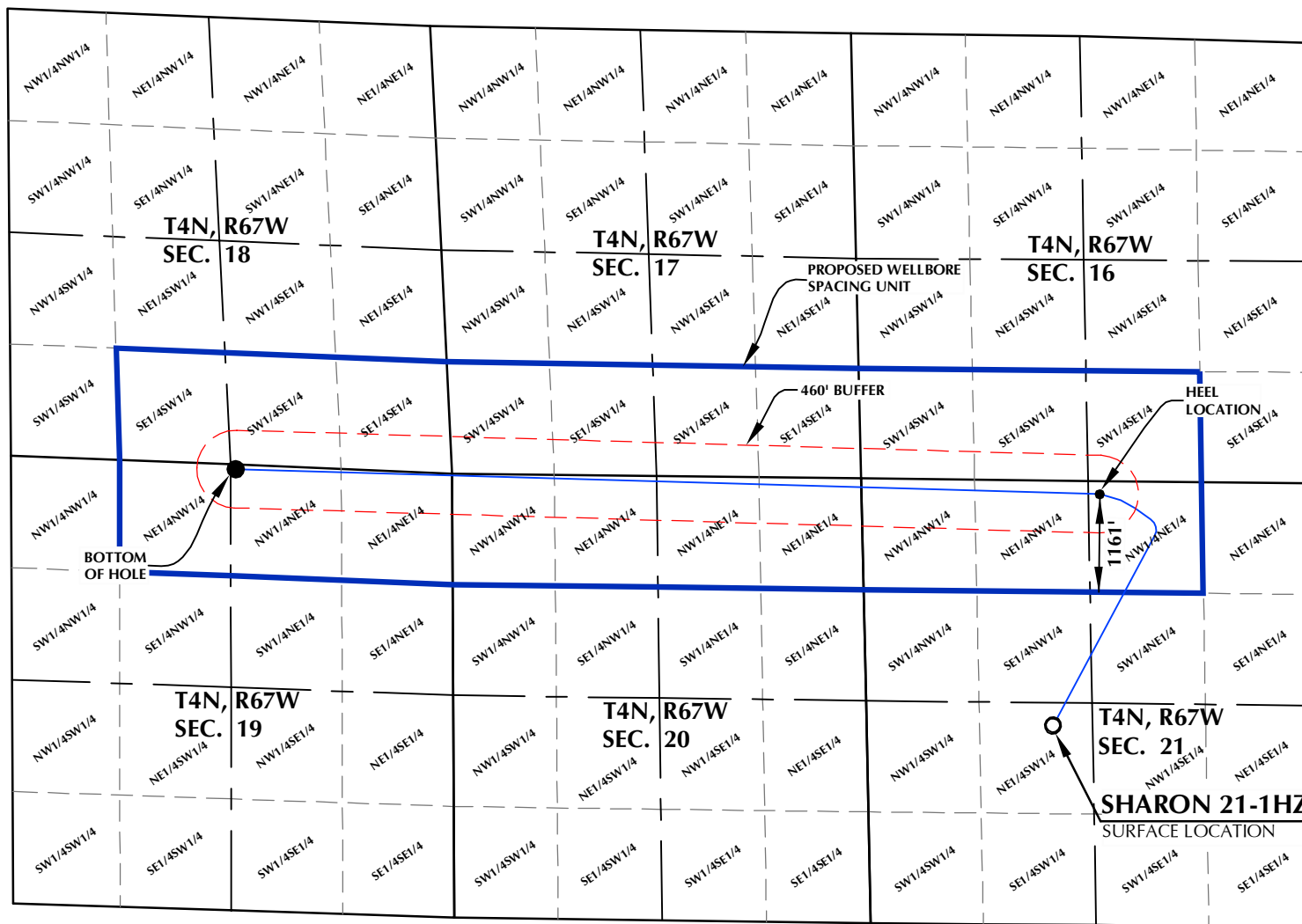
John Piekara
Senior Regulatory Analyst

DISTANCE FROM COMPLETED
PORTION OF WELLBORE TO
NEAREST UNIT BOUNDARY= 1161'

SHARON 21-1HZ WELLBORE SPACING UNIT



SURFACE LOCATION: NAD 83
GROUND ELEVATION= 4938.7'
LATITUDE= 40.297581°
LONGITUDE= -104.897599°
LATITUDE= 40°17'51.292"
LONGITUDE= -104°53'51.356"
HEEL LOCATION: NAD 83
LATITUDE= 40.305085°
LONGITUDE= -104.895542°
LATITUDE= 40°18'18.306"
LONGITUDE= -104°53'43.952"
BOTTOM HOLE LOCATION: NAD 83
LATITUDE= 40.306086°
LONGITUDE= -104.932200°
LATITUDE= 40°18'21.910"
LONGITUDE= -104°55'55.920"



WELL PAD - SHARON 11-21HZ

SHARON 21-1HZ
WELLBORE SPACING UNIT
2358' FSL & 2207' FWL NESW (SURFACE)
152' FNL & 2550' FEL NWNE (HEEL)
LOCATED IN SECTION 21
59' FNL & 2561' FEL NWNE (BOTTOM)
LOCATED IN SECTION 19
T4N, R67W, 6TH P.M.
WELD COUNTY, COLORADO

**Kerr-McGee Oil &
Gas Onshore L.P.**
1099 18th Street
Denver, Colorado 80202



CONSULTING, LLC

SHERIDAN OFFICE
1095 Saberton Avenue
Sheridan, Wyoming 82801
Phone 307-674-0609

LOVELAND OFFICE
1635 Foxtrail Drive, Suite 204
Loveland, Colorado 80538
Phone 970-776-4331

DRAFTED BY:	LMO	CHECKED BY:	RKF
DATE DRAFTED:	3/22/18	DATE SURVEYED:	3/1/18
REVISED:		FILE NAME:	17-235

NOTES:

1. DRAWING LATITUDE AND LONGITUDE COORDINATES ARE NAD 83 (2011)(EPOCH:2010).
2. ELEVATION BASED ON NAVD88 (GEOID12B).
3. BASIS OF BEARING DERIVED FROM COLORADO COORDINATE SYSTEM OF 1983 NORTH ZONE.
4. ALL MEASURED DISTANCES ARE GRID. COMBINED SCALE FACTOR: .99972673 CALCULATED FROM THE CENTER 1/4 CORNER OF SECTION 20, T4N, R67W.