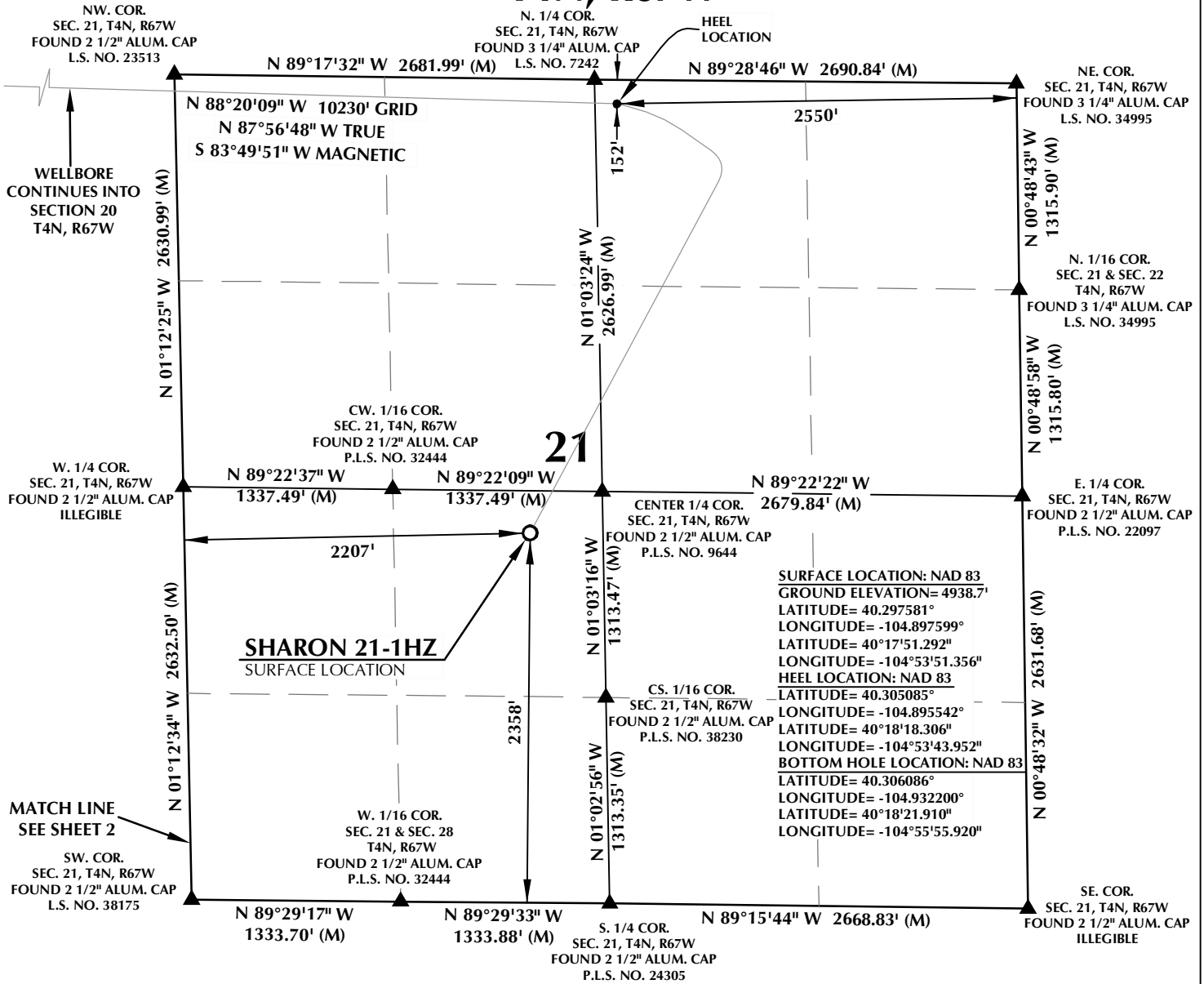


T4N, R67W

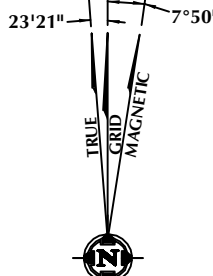


CERTIFICATE OF SURVEYOR:

THIS IS TO CERTIFY THAT THE ABOVE PLAT WAS PREPARED FROM FIELD NOTES OF ACTUAL SURVEYS MADE BY ME OR UNDER MY SUPERVISION AND THAT THE SAME ARE TRUE AND CORRECT TO THE BEST OF MY KNOWLEDGE AND BELIEF. THIS CERTIFICATE DOES NOT REPRESENT A LAND SURVEY PLAT OR IMPROVEMENT SURVEY PLAT AS DEFINED BY C.R.S. 38-5-102 AND CANNOT BE RELIED UPON TO DETERMINE OWNERSHIP.

Randall K. French
 RANDALL K. FRENCH
 PROFESSIONAL LAND SURVEYOR
 COLORADO REGISTRATION NUMBER 38512
 3/22/18

NOTICE: ACCORDING TO COLORADO STATE LAW YOU MUST COME TO COURT FOR LEGAL ACTION BASED UPON ANY DEFECT IN THIS SURVEY WITHIN THREE YEARS AFTER YOU FIRST DISCOVER SUCH DEFECT. IN NO EVENT MAY ANY ACTION BASED UPON ANY DEFECT IN THIS SURVEY BE COMMENCED MORE THAN TEN YEARS FROM THE DATE ON THE CERTIFICATION SHOWN HEREON.



NOTE:
 MAGNETIC NORTH IS CURRENT AS OF 3/1/2018.
 MAGNETIC NORTH CHANGES WEST 0°06' PER YEAR.

NOTES:

- ▲ INDICATES SECTION CORNER.
- INDICATES CALCULATED CORNER.
- ELEVATION BASED ON NAVD88 (GEOID12B).
- BASIS OF BEARING DERIVED FROM COLORADO COORDINATE SYSTEM OF 1983 NORTH ZONE.
- ALL MEASURED DISTANCES ARE GRID.
- COMBINED SCALE FACTOR: .99972673 CALCULATED FROM THE CENTER 1/4 CORNER OF SECTION 20, T4N, R67W.
- OPERATOR: NICK ROADIFER / PDOP = 1.2.
- SEE ADDENDUM TO WELL LOCATION CERTIFICATE FOR EXISTING IMPROVEMENTS WITHIN 500' OF THE WELL PAD.
- WELL FOOTAGES ARE MEASURED AT RIGHT ANGLES TO THE SECTION LINES.
- THE BOTTOM OF HOLE BEARS N88°20'09"W, 10230' FROM THE HEEL LOCATION.

WELL PAD - SHARON 11-21HZ

SHARON 21-1HZ
 WELL LOCATION CERTIFICATE
 2358' FSL & 2207' FWL NESW (SURFACE)
 152' FNL & 2550' FEL NWNE (HEEL)
 LOCATED IN SECTION 21
 59' FNL & 2561' FEL NWNE (BOTTOM)
 LOCATED IN SECTION 19
 T4N, R67W, 6TH P.M.
 WELD COUNTY, COLORADO

**Kerr-McGee Oil &
 Gas Onshore L.P.**
 1099 18th Street
 Denver, Colorado 80202



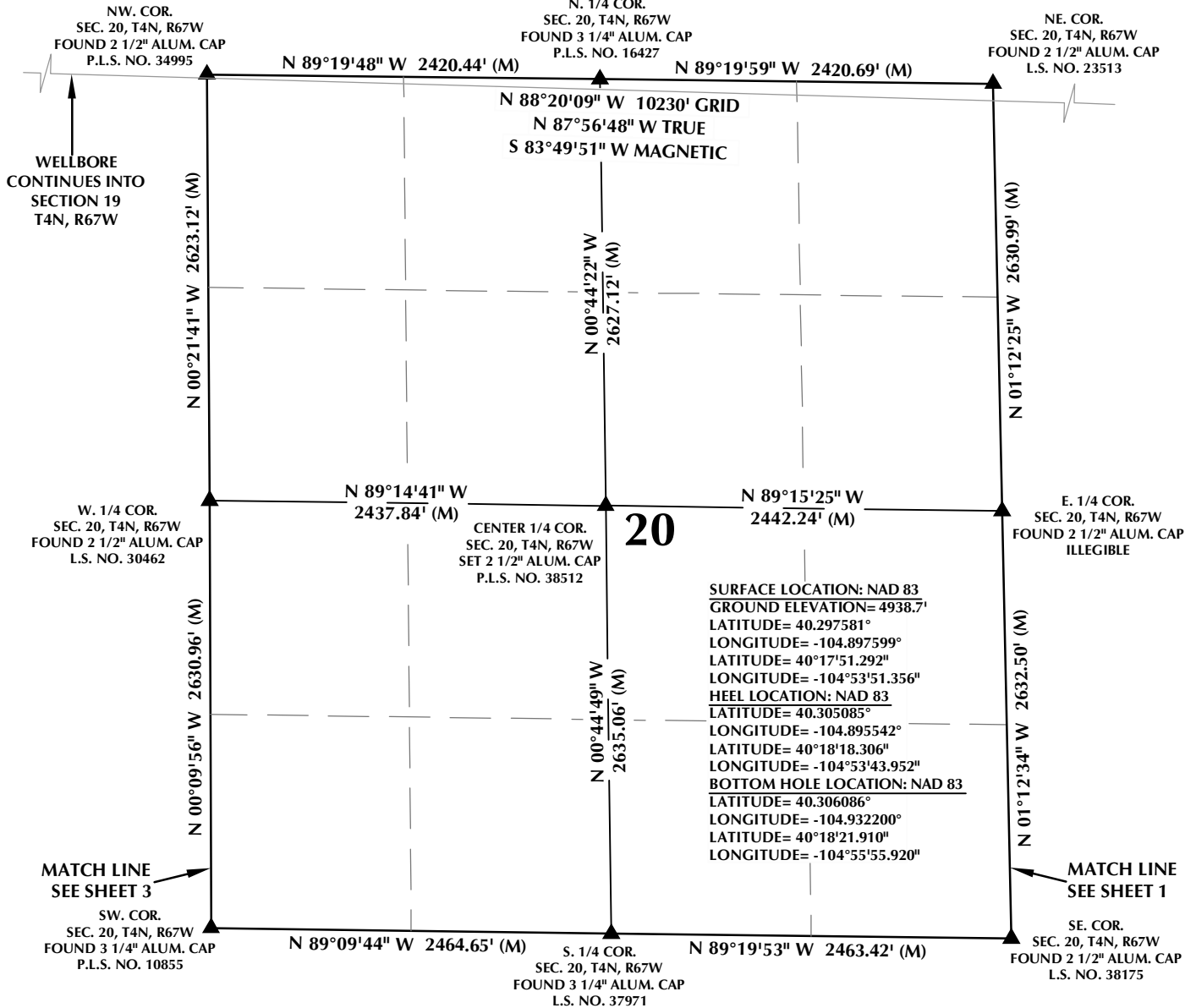
CONSULTING, LLC

SHERIDAN OFFICE
 1095 Saberton Avenue
 Sheridan, Wyoming 82801
 Phone 307-674-0609

LOVELAND OFFICE
 1635 Foxtrail Drive, Suite 204
 Loveland, Colorado 80538
 Phone 970-776-4331

DRAFTED BY:	LMO	CHECKED BY:	RKF	SHEET NO:
DATE DRAFTED:	3/22/18	DATE SURVEYED:	3/1/18	1
REVISED:		FILE NAME:	17-235	1 OF 3

T4N, R67W

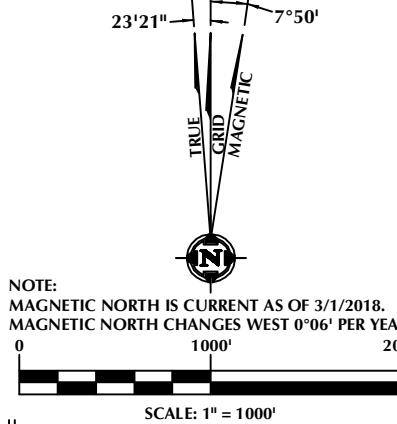


CERTIFICATE OF SURVEYOR:

THIS IS TO CERTIFY THAT THE ABOVE PLAT WAS PREPARED FROM FIELD NOTES OF ACTUAL SURVEYS MADE BY ME OR UNDER MY SUPERVISION AND THAT THE SAME ARE TRUE AND CORRECT TO THE BEST OF MY KNOWLEDGE AND BELIEF. THIS CERTIFICATE DOES NOT REPRESENT A LAND SURVEY PLAT OR IMPROVEMENT SURVEY PLAT AS DEFINED BY C.R.S. 38-5-102 AND CANNOT BE RELIED UPON TO DETERMINE OWNERSHIP.

Randall K. French
 RANDALL K. FRENCH
 PROFESSIONAL LAND SURVEYOR
 COLORADO REGISTRATION NUMBER 38512
 3/22/18

NOTICE: ACCORDING TO COLORADO STATE LAW YOU MUST COMMENCE A LEGAL ACTION BASED UPON ANY DEFECT IN THIS SURVEY WITHIN THREE YEARS AFTER YOU FIRST DISCOVER SUCH DEFECT. IN NO EVENT MAY ANY ACTION BASED UPON ANY DEFECT IN THIS SURVEY BE COMMENCED MORE THAN TEN YEARS FROM THE DATE ON THE CERTIFICATION SHOWN HEREON.



NOTES:

- ▲ INDICATES SECTION CORNER.
- INDICATES CALCULATED CORNER.
- ELEVATION BASED ON NAVD88 (GEOID12B).
- BASIS OF BEARING DERIVED FROM COLORADO COORDINATE SYSTEM OF 1983 NORTH ZONE.
- ALL MEASURED DISTANCES ARE GRID.
COMBINED SCALE FACTOR: .99972673 CALCULATED FROM THE CENTER 1/4 CORNER OF SECTION 20, T4N, R67W.
OPERATOR: NICK ROADIFER / PDOP = 1.2.
- SEE ADDENDUM TO WELL LOCATION CERTIFICATE FOR EXISTING IMPROVEMENTS WITHIN 500' OF THE WELL PAD.
- WELL FOOTAGES ARE MEASURED AT RIGHT ANGLES TO THE SECTION LINES.
- THE BOTTOM OF HOLE BEARS N88°20'09"W, 10230' FROM THE HEEL LOCATION.

WELL PAD - SHARON 11-21HZ

SHARON 21-1HZ
 WELL LOCATION CERTIFICATE
 2358' FSL & 2207' FWL NESW (SURFACE)
 152' FNL & 2550' FEL NWNE (HEEL)
 LOCATED IN SECTION 21
 59' FNL & 2561' FEL NWNE (BOTTOM)
 LOCATED IN SECTION 19
 T4N, R67W, 6TH P.M.
 WELD COUNTY, COLORADO

**Kerr-McGee Oil &
 Gas Onshore L.P.**
 1099 18th Street
 Denver, Colorado 80202



CONSULTING, LLC

SHERIDAN OFFICE
 1095 Saberton Avenue
 Sheridan, Wyoming 82801
 Phone 307-674-0609

LOVELAND OFFICE
 1635 Foxtrail Drive, Suite 204
 Loveland, Colorado 80538
 Phone 970-776-4331

DRAFTED BY:	LMO	CHECKED BY:	RKF	SHEET NO:
DATE DRAFTED:	3/22/18	DATE SURVEYED:	3/1/18	2
REVISED:		FILE NAME:	17-235	2 OF 3

T4N, R67W

N. 1/4 COR.
SEC. 19, T4N, R67W
FOUND 3 1/4" ALUM. CAP
ILLEGIBLE

NW. COR.
SEC. 19, T4N, R67W
FOUND 2 1/2" ALUM. CAP
P.L.S. NO. 34995

NE. COR.
SEC. 19, T4N, R67W
FOUND 2 1/2" ALUM. CAP
P.L.S. NO. 34995

N 00°18'08" W 2648.47' (M)

N 87°53'44" W 2599.88' (M)

N 87°28'31" W 2622.25' (M)

BOTTOM OF HOLE:
59' FNL & 2561' FEL

1251' 2561'
N 88°20'09" W 10230' GRID
N 87°56'48" W TRUE
S 83°49'51" W MAGNETIC

NO. 2

NO. 1

N 00°06'33" W
2645.02' (C)

1262'

2584'

N 00°21'41" W 2623.12' (M)

W. 1/4 COR.
SEC. 19, T4N, R67W
FOUND 2 1/2" ALUM. CAP
P.L.S. NO. 38065

N 87°57'49" W
2590.83' (C)

N 87°57'49" W
2632.87' (C)

19

E. 1/4 COR.
SEC. 19, T4N, R67W
FOUND 2 1/2" ALUM. CAP
P.L.S. NO. 30462

MATCH LINE
SEE SHEET 2

N 00°18'22" W 2648.50' (M)

NO. 2

NO. 1

N 00°06'33" W
2639.46' (C)

SURFACE LOCATION: NAD 83
GROUND ELEVATION= 4938.7'
LATITUDE= 40.297581°
LONGITUDE= -104.897599°
LATITUDE= 40°17'51.292"
LONGITUDE= -104°53'51.356"
HEEL LOCATION: NAD 83
LATITUDE= 40.305085°
LONGITUDE= -104.895542°
LATITUDE= 40°18'18.306"
LONGITUDE= -104°53'43.952"
BOTTOM HOLE LOCATION: NAD 83
LATITUDE= 40.306086°
LONGITUDE= -104.932200°
LATITUDE= 40°18'21.910"
LONGITUDE= -104°55'55.920"

N 00°09'56" W 2630.96' (M)

SW. COR.
SEC. 19, T4N, R67W
FOUND 3 1/4" ALUM. CAP
P.L.S. NO. 38285

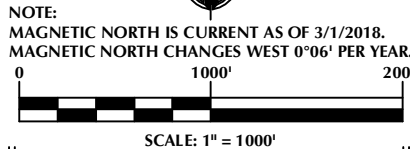
N 88°09'23" W 2581.42' (M)

S. 1/4 COR.
SEC. 19, T4N, R67W
FOUND 2 1/2" ALUM. CAP
P.L.S. NO. 10945

N 88°09'02" W 2635.14' (M)

SE. COR.
SEC. 19, T4N, R67W
FOUND 3 1/4" ALUM. CAP
P.L.S. NO. 10855

23'21" 7°50'



NOTES:

- ▲ INDICATES SECTION CORNER.
- INDICATES CALCULATED CORNER.
- ELEVATION BASED ON NAVD88 (GEOID12B).
- BASIS OF BEARING DERIVED FROM COLORADO COORDINATE SYSTEM OF 1983 NORTH ZONE.
- ALL MEASURED DISTANCES ARE GRID.
COMBINED SCALE FACTOR: .99972673 CALCULATED FROM THE CENTER 1/4 CORNER OF SECTION 20, T4N, R67W.
OPERATOR: NICK ROADIFER / DOP = 1.2.
- SEE ADDENDUM TO WELL LOCATION CERTIFICATE FOR EXISTING IMPROVEMENTS WITHIN 500' OF THE WELL PAD.
- WELL FOOTAGES ARE MEASURED AT RIGHT ANGLES TO THE SECTION LINES.
- THE BOTTOM OF HOLE BEARS N88°20'09"W, 10230' FROM THE HEEL LOCATION.
- NO. 1 & NO. 2 AS SHOWN HEREON ARE GOVERNMENT LOTS 1 & 2 PER THE ORIGINAL GLO SURVEY.

CERTIFICATE OF SURVEYOR:

THIS IS TO CERTIFY THAT THE ABOVE PLAT WAS PREPARED FROM FIELD NOTES OF ACTUAL SURVEYS MADE BY ME OR UNDER MY SUPERVISION AND THAT THE SAME ARE TRUE AND CORRECT TO THE BEST OF MY KNOWLEDGE AND BELIEF. THIS CERTIFICATE DOES NOT REPRESENT A LAND SURVEY PLAT OR IMPROVEMENT SURVEY PLAT AS DEFINED BY C.R.S. 38-5-102 AND CANNOT BE RELIED UPON TO DETERMINE OWNERSHIP.

Randall K. French
38512
3/22/18
PROFESSIONAL LAND SURVEYOR

RANDALL K. FRENCH
PROFESSIONAL LAND SURVEYOR
COLORADO REGISTRATION NUMBER 38512

NOTICE:
ACCORDING TO COLORADO STATE LAW YOU MUST COMMENCE LEGAL ACTION BASED UPON ANY DEFECT IN THIS SURVEY WITHIN THREE YEARS AFTER YOU FIRST DISCOVER SUCH DEFECT. IN NO EVENT MAY ANY ACTION BASED UPON ANY DEFECT IN THIS SURVEY BE COMMENCED MORE THAN TEN YEARS FROM THE DATE ON THE CERTIFICATION SHOWN HEREON.

WELL PAD - SHARON 11-21HZ

SHARON 21-1HZ
WELL LOCATION CERTIFICATE
2358' FSL & 2207' FWL NESW (SURFACE)
152' FNL & 2550' FEL NWNE (HEEL)
LOCATED IN SECTION 21
59' FNL & 2561' FEL NWNE (BOTTOM)
LOCATED IN SECTION 19
T4N, R67W, 6TH P.M.
WELD COUNTY, COLORADO

Kerr-McGee Oil &
Gas Onshore L.P.
1099 18th Street
Denver, Colorado 80202



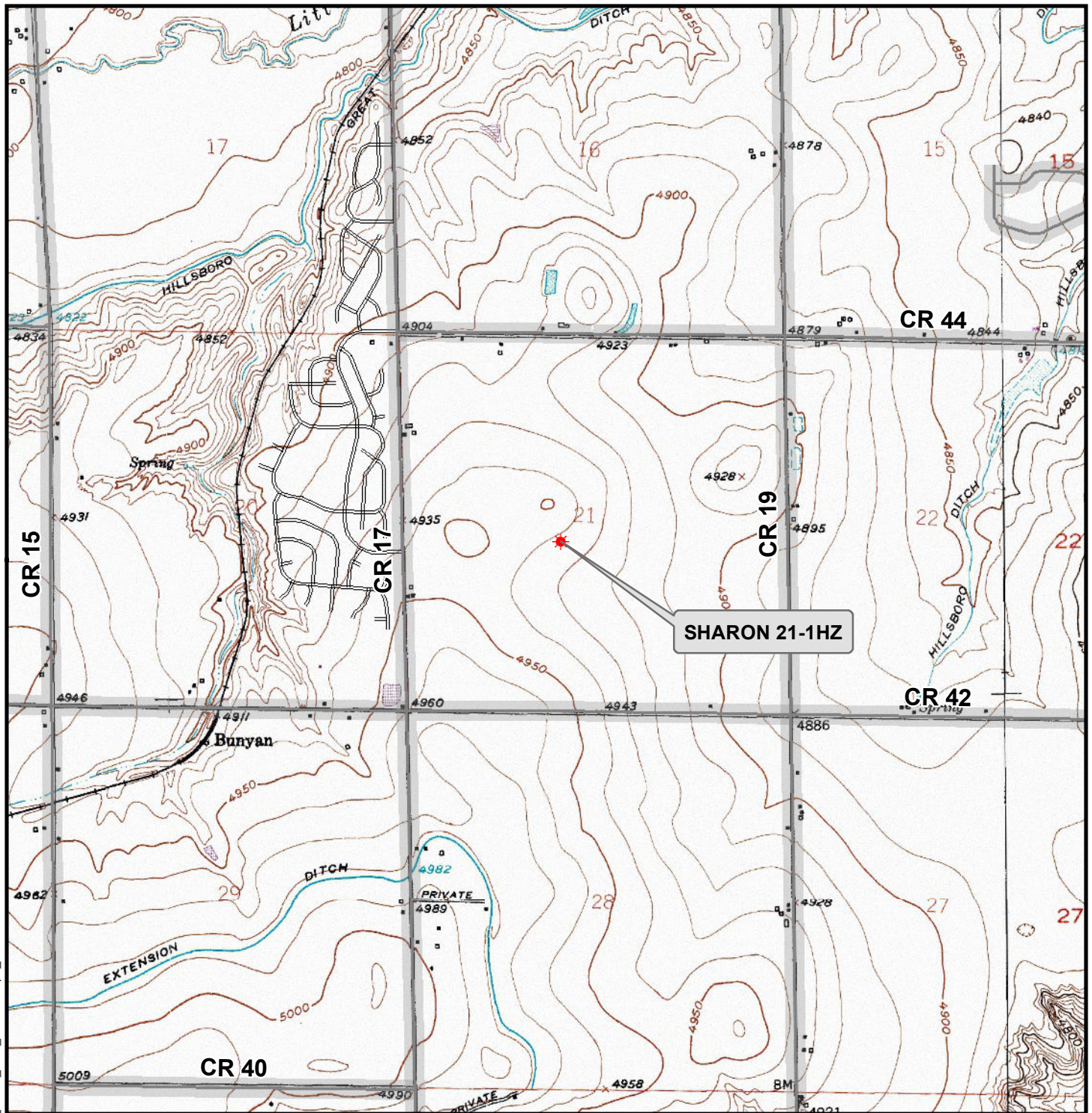
CONSULTING, LLC

SHERIDAN OFFICE
1095 Saberton Avenue
Sheridan, Wyoming 82801
Phone 307-674-0609

LOVELAND OFFICE
1635 Foxtrail Drive, Suite 204
Loveland, Colorado 80538
Phone 970-776-4331

DRAFTED BY:	LMO	CHECKED BY:	RKF	SHEET NO:
DATE DRAFTED:	3/22/18	DATE SURVEYED:	3/1/18	3
REVISED:		FILE NAME:	17-235	3 OF 3

K:\ANADARKO\2017\2017_235_SHARON_&_WALTER_T4N_R67W_SEC_21\GIS\Maps_ABC\Sharon 11-21HZ\Sharon 21-1HZ.mxd 3/13/2018 3:44:35 PM



Legend

- ★ Well - Fee - Proposed ===== Road - Primitive - Existing ——— Road - County - Existing
———— Road - Improved - Existing ——— Road - Highway - Existing

WELL PAD - SHARON 11-21HZ

**GENERAL LOCATION MAP
SHARON 21-1HZ
LOCATED IN SECTION 21
T4N, R67W, 6th P.M.
WELD COUNTY, COLORADO**

**Kerr-McGee Oil &
Gas Onshore L.P.**

1099 18th Street
Denver, Colorado 80202



CONSULTING, LLC

SHERIDAN OFFICE 1095 Saberton Avenue
Sheridan, Wyoming 82801
Phone 307-674-0609

LOVELAND OFFICE 1635 Foxtail Drive, Suite 204
Loveland, Colorado 80538
Phone 970-776-4331



SCALE: 1" = 2,000ft

NAD83 CO-Nft

DRAWN: DP

DATE: 22 Mar 2018

REVISED:

DATE: