

T12N, R65W

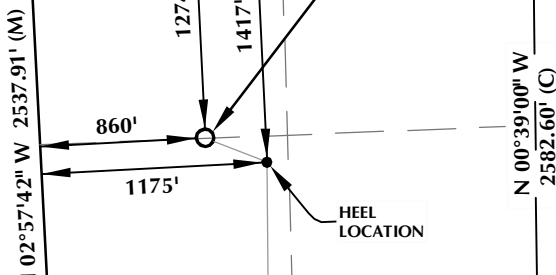
NW. COR.
SEC. 35, T12N, R65W
FOUND 3 1/4" ALUM. CAP
L.S. NO. 38305

S 87°16'56" W 5266.23' (M)

NE. COR.
SEC. 35, T12N, R65W
FOUND 2 1/2" ALUM. CAP
L.S. NO. 37070

**RESOLUTION FED
12-65-35-2-2NH**
SURFACE LOCATION

SURFACE LOCATION: NAD 83
GROUND ELEVATION= 5930.3'
LATITUDE= 40.967201°
LONGITUDE= -104.635056°
LATITUDE= 40°58'01.923"
LONGITUDE= -104°38'06.200"
HEEL LOCATION: NAD 83
LATITUDE= 40.966842°
LONGITUDE= -104.633894°
LATITUDE= 40°58'00.631"
LONGITUDE= -104°38'02.018"
BOTTOM HOLE LOCATION: NAD 83
LATITUDE= 40.943822°
LONGITUDE= -104.633915°
LATITUDE= 40°56'37.759"
LONGITUDE= -104°38'02.094"



W. 1/4 COR.
SEC. 35, T12N, R65W
FOUND 3 1/4" ALUM. CAP
L.S. NO. 38305

S 88°15'25" W
2529.49' (C)

S 88°15'25" W
2631.74' (C)

SURFACE LOCATION: NAD 27
LATITUDE= 40.967219°
LONGITUDE= -104.634536°
LATITUDE= 40°58'01.987"
LONGITUDE= -104°38'04.330"
HEEL LOCATION: NAD 27
LATITUDE= 40.966860°
LONGITUDE= -104.633375°
LATITUDE= 40°58'00.695"
LONGITUDE= -104°38'00.148"
BOTTOM HOLE LOCATION: NAD 27
LATITUDE= 40.943840°
LONGITUDE= -104.633396°
LATITUDE= 40°56'37.823"
LONGITUDE= -104°38'00.224"

SW. COR.
SEC. 35, T12N, R65W
FOUND 2 1/2" ALUM. CAP
L.S. NO. 9911

S 89°10'56" W 2607.38' (M)

S. 1/4 COR.
SEC. 35, T12N, R65W
FOUND STONE

S 89°24'30" W 2631.13' (M)

SE. COR.
SEC. 35, T12N, R65W
FOUND 2 1/2" ALUM. CAP
L.S. NO. 9911

WELLBORE CONTINUES INTO
SECTION 2, T11N, R65W

MATCH LINE
SEE SHEET 2

CERTIFICATE OF SURVEYOR:

THIS IS TO CERTIFY THAT THE ABOVE PLAT WAS PREPARED FROM FIELD NOTES OF ACTUAL SURVEY MADE BY ME OR UNDER MY SUPERVISION AND THAT THE SAME ARE TRUE AND CORRECT TO THE BEST OF MY KNOWLEDGE AND BELIEF. THIS CERTIFICATE DOES NOT REPRESENT A LAND SURVEY PLAT OR IMPROVEMENT SURVEY PLAT AS DEFINED BY C.R.S. 38-51-302 AND CANNOT BE RELIED UPON TO DETERMINE OWNERSHIP.

Randall K. French
PROFESSIONAL LAND SURVEYOR
38512
1/15/18
COLORADO REGISTRATION NUMBER 38512

NOTICE:
ACCORDING TO COLORADO STATE LAW YOU MUST TAKE IMMEDIATE ACTION BASED UPON ANY DEFECT IN THIS SURVEY WITHIN THREE YEARS AFTER YOU FIRST DISCOVER SUCH DEFECT. IN NO EVENT MAY ANY ACTION BASED UPON ANY DEFECT IN THIS SURVEY BE COMMENCED MORE THAN TEN YEARS FROM THE DATE ON THE CERTIFICATION SHOWN HEREON.

NOTE:
MAGNETIC NORTH IS CURRENT AS OF 3/5/2015.
MAGNETIC NORTH CHANGES WEST 0°06' PER YEAR.
SCALE: 1" = 1000'

NOTES:

- ▲ INDICATES SECTION CORNER.
- INDICATES CALCULATED CORNER.
- INDICATES STATE LINE MONUMENT.
- ELEVATION BASED ON NAVD88 (GEOID09).
- BASIS OF BEARING DERIVED FROM COLORADO COORDINATE SYSTEM OF 1983 NORTH ZONE.
- ALL MEASURED DISTANCES ARE GRID.
- COMBINED SCALE FACTOR: .99975766 CALCULATED FROM THE NE. CORNER OF SECTION 35, T12N, R65W.
- OPERATOR: ROB WILSON / PDOP = 1.3.
- SEE ADDENDUM TO WELL LOCATION CERTIFICATE FOR EXISTING IMPROVEMENTS WITHIN 500' OF THE WELL PAD.
- WELL FOOTAGES ARE MEASURED AT RIGHT ANGLES TO THE SECTION LINES.
- THE BOTTOM OF HOLE BEARS S00°31'12"E, 8388' FROM THE HEEL LOCATION.

WELL PAD - RESOLUTION FED 12-65-35-2CH

RESOLUTION FED 12-65-35-2NH
WELL LOCATION CERTIFICATE
1274' FNL & 860' FWL NWNW (SURFACE)
1417' FNL & 1175' FWL SWNW (HEEL)
LOCATED IN SECTION 35
T12N, R65W, 6TH P.M.
600' FSL & 1270' FWL SWSW (BOTTOM)
LOCATED IN SECTION 2
T11N, R65W, 6TH P.M.
WELD COUNTY, COLORADO

**Anadarko E&P
Onshore LLC**
1099 18th Street
Denver, Colorado 80202



CONSULTING, LLC

SHERIDAN OFFICE
1095 Saberton Avenue
Sheridan, Wyoming 82801
Phone 307-674-0609

LOVELAND OFFICE
1635 Foxtrail Drive, Suite 204
Loveland, Colorado 80538
Phone 970-776-4331

DRAFTED BY:	MDB	CHECKED BY:	RKF	SHEET NO:
DATE DRAFTED:	3/10/15	DATE SURVEYED:	12/16/14	1
REVISED:	1/15/18	FILE NAME:	14-52	1 OF 2

T11N, R65W

NW. COR.
SEC. 2, T11N, R65W
FOUND 2 1/2" ALUM. CAP
L.S. NO. 9911

S 89°10'56" W 2607.38' (M)

MATCH LINE
SEE SHEET 1

NE. COR.
SEC. 2, T11N, R65W
FOUND 2 1/2" ALUM. CAP
L.S. NO. 9911

N. 1/4 COR.
SEC. 2, T11N, R65W
FOUND STONE

SURFACE LOCATION: NAD 83
GROUND ELEVATION= 5930.3'
LATITUDE= 40.967201°
LONGITUDE= -104.635056°
LATITUDE= 40°58'01.923"
LONGITUDE= -104°38'06.200"
HEEL LOCATION: NAD 83
LATITUDE= 40.966842°
LONGITUDE= -104.633894°
LATITUDE= 40°58'00.631"
LONGITUDE= -104°38'02.018"
BOTTOM HOLE LOCATION: NAD 83
LATITUDE= 40.943822°
LONGITUDE= -104.633915°
LATITUDE= 40°56'37.759"
LONGITUDE= -104°38'02.094"

SURFACE LOCATION: NAD 27
LATITUDE= 40.967219°
LONGITUDE= -104.634536°
LATITUDE= 40°58'01.987"
LONGITUDE= -104°38'04.330"
HEEL LOCATION: NAD 27
LATITUDE= 40.966860°
LONGITUDE= -104.633375°
LATITUDE= 40°58'00.695"
LONGITUDE= -104°38'00.148"
BOTTOM HOLE LOCATION: NAD 27
LATITUDE= 40.943840°
LONGITUDE= -104.633396°
LATITUDE= 40°56'37.823"
LONGITUDE= -104°38'00.224"

SW. COR.
SEC. 2, T11N, R65W
FOUND 3 1/4" ALUM. CAP
L.S. NO. 38305

N 89°36'35" W 5214.21' (M)

SE. COR.
SEC. 2, T11N, R65W
FOUND 3 1/4" ALUM. CAP
L.S. NO. 38305

CERTIFICATE OF SURVEYOR:

THIS IS TO CERTIFY THAT THE ABOVE PLAT WAS PREPARED FROM FIELD NOTES OF ACTUAL SURVEY MADE BY ME OR UNDER MY SUPERVISION AND THAT THE SAME ARE TRUE AND CORRECT TO THE BEST OF MY KNOWLEDGE AND BELIEF. THIS CERTIFICATE DOES NOT REPRESENT A LAND SURVEY PLAT OR IMPROVEMENT SURVEY PLAT AS DEFINED BY C.R.S. 19-51-102 AND CANNOT BE RELIED UPON TO DETERMINE OWNERSHIP.

Randall K. French
PROFESSIONAL LAND SURVEYOR
38512
1/15/18
RANDALL K. FRENCH
PROFESSIONAL LAND SURVEYOR
COLORADO REGISTRATION NUMBER 38512

NOTICE:
ACCORDING TO COLORADO STATE LAW YOU MUST TAKE IMMEDIATE ACTION BASED UPON ANY DEFECT IN THIS SURVEY WITHIN THREE YEARS AFTER YOU FIRST DISCOVER SUCH DEFECT. IN NO EVENT MAY ANY ACTION BASED UPON ANY DEFECT IN THIS SURVEY BE COMMENCED MORE THAN TEN YEARS FROM THE DATE ON THE CERTIFICATION SHOWN HEREON.

NOTE:
MAGNETIC NORTH IS CURRENT AS OF 3/5/2015.
MAGNETIC NORTH CHANGES WEST 0°06' PER YEAR.
SCALE: 1" = 1000'

NOTES:

- ▲ INDICATES SECTION CORNER.
- INDICATES CALCULATED CORNER.
- INDICATES STATE LINE MONUMENT.
- ELEVATION BASED ON NAVD88 (GEOID09).
- BASIS OF BEARING DERIVED FROM COLORADO COORDINATE SYSTEM OF 1983 NORTH ZONE.
- ALL MEASURED DISTANCES ARE GRID.
- COMBINED SCALE FACTOR: .99975766 CALCULATED FROM THE NE. CORNER OF SECTION 35, T12N, R65W.
- OPERATOR: ROB WILSON / PDOP = 1.3.
- SEE ADDENDUM TO WELL LOCATION CERTIFICATE FOR EXISTING IMPROVEMENTS WITHIN 500' OF THE WELL PAD.
- WELL FOOTAGES ARE MEASURED AT RIGHT ANGLES TO THE SECTION LINES.
- THE BOTTOM OF HOLE BEARS S00°31'12"E, 8388' FROM THE HEEL LOCATION.

WELL PAD - RESOLUTION FED 12-65-35-2CH

RESOLUTION FED 12-65-35-2NH
WELL LOCATION CERTIFICATE
1274' FNL & 860' FWL NWNW (SURFACE)
1417' FNL & 1175' FWL SWNW (HEEL)
LOCATED IN SECTION 35
T12N, R65W, 6TH P.M.
600' FSL & 1270' FWL SWSW (BOTTOM)
LOCATED IN SECTION 2
T11N, R65W, 6TH P.M.
WELD COUNTY, COLORADO

Anadarko E&P
Onshore LLC
1099 18th Street
Denver, Colorado 80202



CONSULTING, LLC

SHERIDAN OFFICE
1095 Saberton Avenue
Sheridan, Wyoming 82801
Phone 307-674-0609

LOVELAND OFFICE
1635 Foxtrail Drive, Suite 204
Loveland, Colorado 80538
Phone 970-776-4331

DRAFTED BY: MDB	CHECKED BY: RKF	SHEET NO: 2 2 OF 2
DATE DRAFTED: 3/10/15	DATE SURVEYED: 12/16/14	
REVISED: 1/15/18	FILE NAME: 14-52	