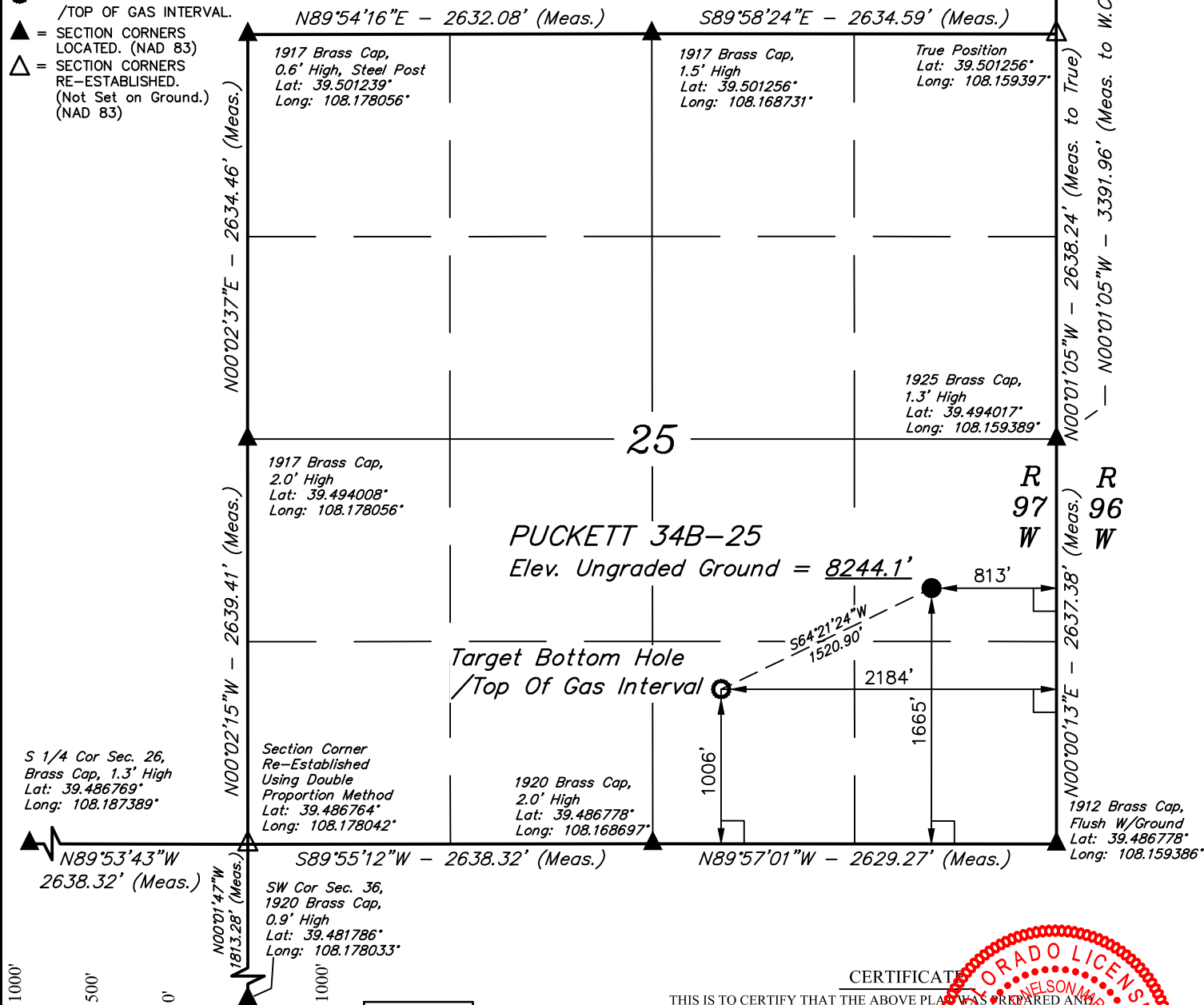


# LEGEND:

- = 90° SYMBOL
- = PROPOSED WELLHEAD.
- = TARGET BOTTOM HOLE.  
/TOP OF GAS INTERVAL.
- ▲ = SECTION CORNERS  
LOCATED. (NAD 83)
- △ = SECTION CORNERS  
RE-ESTABLISHED.  
(Not Set on Ground.)  
(NAD 83)

T6S, R97W, 6th P.M.

W.C. 1912 Brass  
Cap, 1.5' High  
Lat: 39.503325°  
Long: 108.159400°



PDOP = 1.1

NAD 83 (SURFACE LOCATION)	NAD 83 (TARGET BOTTOM HOLE/TGI)
LATITUDE = 39°29'28.85" (39.491347)	LATITUDE = 39°29'22.34" (39.489539)
LONGITUDE = 108°09'44.16" (108.162267)	LONGITUDE = 108°10'01.64" (108.167122)
NAD 27 (SURFACE LOCATION)	NAD 27 (TARGET BOTTOM HOLE/TGI)
LATITUDE = 39°29'28.93" (39.491369)	LATITUDE = 39°29'22.42" (39.489561)
LONGITUDE = 108°09'41.87" (108.161631)	LONGITUDE = 108°09'59.35" (108.166486)
UTM NAD 27 (ZONE 12)	UTM NAD 27 (ZONE 12)
N: 14353464.09 E: 2441254.80	N: 14352762.17 E: 2439905.48

## CERTIFICATE

THIS IS TO CERTIFY THAT THE ABOVE PLAT WAS PREPARED AND LOCATION AS SHOWN WAS STAKED ON THE GROUND FROM FIELD NOTES OF ACTUAL SURVEYS MADE BY ME OR UNDER MY SUPERVISION AND THAT THE SAME ARE TRUE AND CORRECT TO THE BEST OF MY KNOWLEDGE AND BELIEF.

REGISTERED LAND SURVEYOR  
REGISTRATION NO. 10180  
STATE OF COLORADO

05-10-18

REV: 1 05-02-18 Z.T. (ADD TGI & BHL CHANGE)

Caerus Oil & Gas LLC

PUCKETT 34B-25  
NE 1/4 SE 1/4, SECTION 25, T6S, R97W, 6th P.M.  
GARFIELD COUNTY, COLORADO

SURVEYED BY	DATE		
BRANDEN BOX, B.B.	12-08-15		
DRAWN BY	DATE		
C.D.L.	01-06-16		
SCALE	1" = 1000'		
WELL LOCATION PLAT			

## BASIS OF BEARINGS

BASIS OF BEARINGS IS A G.P.S. OBSERVATION

## BASIS OF ELEVATION

SPOT ELEVATION AT THE NORTHWEST CORNER OF SECTION 30, T5S, R95W, 6th P.M. TAKEN FROM THE FORKED GULCH QUADRANGLE, COLORADO, GARFIELD COUNTY, 7.5 MINUTE SERIES (TOPOGRAPHICAL MAP) PUBLISHED BY THE UNITED STATES DEPARTMENT OF THE INTERIOR, GEOLOGICAL SURVEY. SAID ELEVATION IS MARKED AS BEING 5966 FEET.



UELS, LLC

Corporate Office \* 85 South 200 East  
Vernal, UT 84078 \* (435) 789-1017

