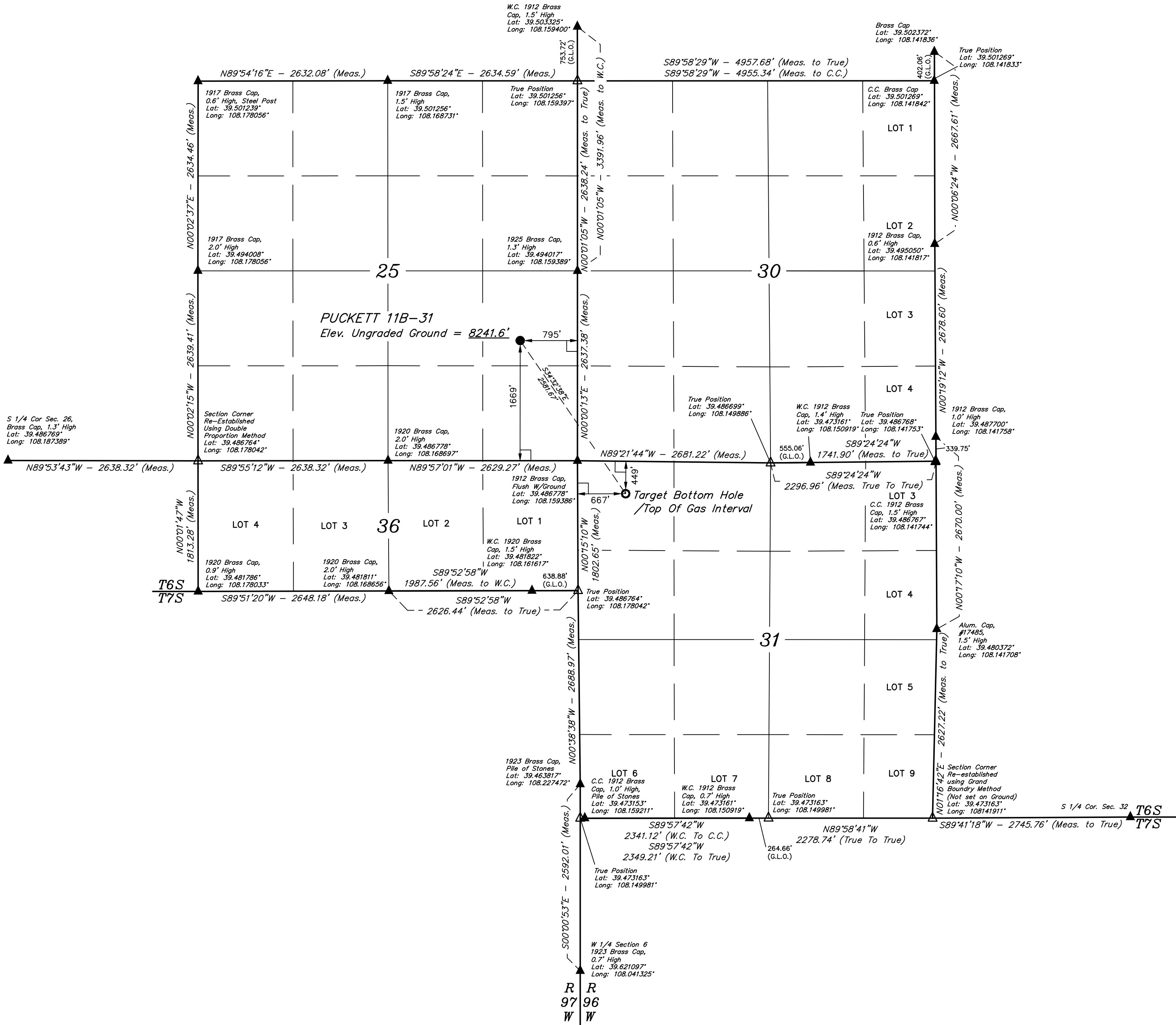


LEGEND:

- └─ = 90° SYMBOL
● = PROPOSED WELLHEAD.
○ = TARGET BOTTOM HOLE.
/TOP OF GAS INTERVAL.
▲ = SECTION CORNERS
LOCATED. (NAD 83)
△ = SECTION CORNERS
RE-ESTABLISHED.
(Not Set on Ground.)
(NAD 83)

T6S, R97W, 6th P.M.



NAD 83 (SURFACE LOCATION)	NAD 83 (TARGET BOTTOM HOLE/TGI)
LATITUDE = 39°29'28.89" (39.491358)	LATITUDE = 39°29'07.89" (39.485524)
LONGITUDE = 108°09'43.94" (108.162206)	LONGITUDE = 108°09'25.25" (108.157015)
NAD 27 (SURFACE LOCATION)	NAD 27 (TARGET BOTTOM HOLE/TGI)
LATITUDE = 39°29'28.97" (39.491381)	LATITUDE = 39°29'07.97" (39.485546)
LONGITUDE = 108°09'41.65" (108.161569)	LONGITUDE = 108°09'22.97" (108.156379)
UTM NAD 27 (ZONE 12)	UTM NAD 27 (ZONE 12)
N: 14353468.40 E: 2441272.32	N: 14351389.90 E: 2442803.80

BASIS OF BEARINGS
BASIS OF BEARINGS IS A G.P.S. OBSERVATION
BASIS OF ELEVATION
SPOT ELEVATION AT THE NORTHWEST CORNER OF SECTION 30, T6S, R95W, 6th P.M. TAKEN FROM THE FORKED GULCH QUADRANGLE, COLORADO, GARFIELD COUNTY, 7.5 MINUTE SERIES (TOPOGRAPHICAL MAP) PUBLISHED BY THE UNITED STATES DEPARTMENT OF THE INTERIOR, GEOLOGICAL SURVEY. SAID ELEVATION IS MARKED AS BEING 5966 FEET.



UELS, LLC
Corporate Office * 85 South 200 East
Vernal, UT 84078 * (435) 789-1017



CERTIFICATE OF SURVEY
THIS IS TO CERTIFY THAT THE ABOVE PLAT WAS PREPARED AND
LOCATION AS SHOWN WAS STAKED ON THE GROUND FROM FIELD NOTES
OF ACTUAL SURVEYS MADE BY ME OR UNDER MY SUPERVISION AND THAT
THE SAME ARE TRUE AND CORRECT TO THE BEST OF MY KNOWLEDGE AND
BELIEF.
REGISTERED LAND SURVEYOR
STATE OF COLORADO
10-18

REV: 1 05-02-18 Z.T. (ADD TGI & BHL CHANGE)

Caerus Oil & Gas LLC

PUCKETT 11B-31
NE 1/4 SE 1/4, SECTION 25, T6S, R97W, 6th P.M.
GARFIELD COUNTY, COLORADO

SURVEYED BY	DATE		
BRANDEN BOX, B.B.	12-08-15		
DRAWN BY	DATE		
C.D.L.	01-06-16		
SCALE	1" = 1000'		

WELL LOCATION PLAT