

Ursa Operating Company LLC

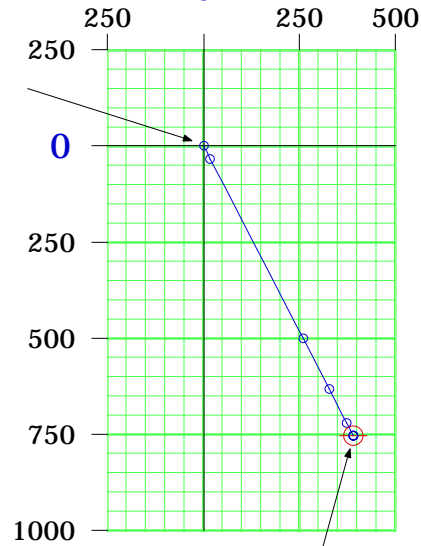
Norcross Well A-12
Garfield County, CO



OPERATING
COMPANY LLC

Surface Location
Y=1623069.49'
X=2371348.61'
NAD 83

Horizontal Plan
1" = 500'

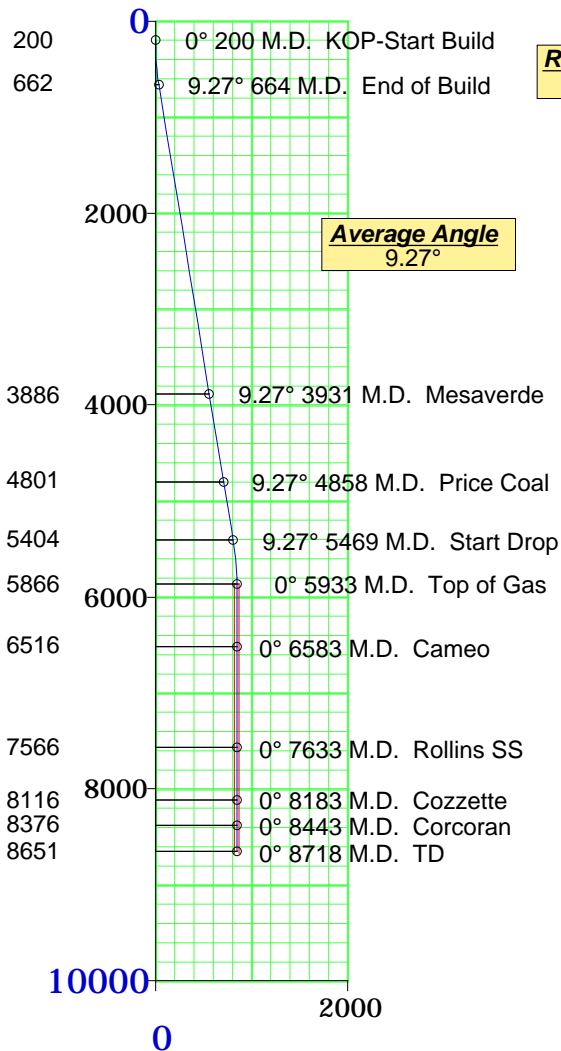


Target Area
25' Radius

Top of Gas
849.32' Displacement
@ 152.64° Azimuth
South-754.29' East-390.37'
TVD-5866' MD-5933'
Y=1622315.2', X=2371739'

Plane of Proposal
152.64° Azimuth

Vertical Section
1" = 2000'



Rate of Build
2°/100' MD

Average Angle
9.27°

Rate of Drop
2°/100' MD

Formation	TVD
Mesaverde	3886
Price Coal	4801
Top Gas	5866
Cameo	6516
Rollins SS	7566
Cozzette	8116
Corcoran	8376
TD	8651



Ursa Operating Company LLC Norcross Well A-12 Garfield County, CO		Page: 2 Minimum of Curvature Slot Location: 1623069.49', 2371348.61' Plane of Vertical Section: 152.64°
---	--	--

Measured Depth Feet	BORE Inc Degrees	HOLE Direction Degrees	True Vertical Depth Feet	RECTANGULAR COORDINATES		LAMBERT COORDINATES		Vertical Section Feet	CLOSURES		Dogleg Severity Deg/100'
				North(-South) Feet	East(-West) Feet	Y Feet	X Feet		Distance Feet	Direction Deg	
6582.86	0.00	152.64	6516.00	-754.29	390.37	1622315.2	2371739.0	849.32	849.32	152.64	0.00
Cameo											
7632.86	0.00	152.64	7566.00	-754.29	390.37	1622315.2	2371739.0	849.32	849.32	152.64	0.00
Rollins SS											
8182.86	0.00	152.64	8116.00	-754.29	390.37	1622315.2	2371739.0	849.32	849.32	152.64	0.00
Cozzette											
8442.86	0.00	152.64	8376.00	-754.29	390.37	1622315.2	2371739.0	849.32	849.32	152.64	0.00
Corcoran											
8717.86	0.00	152.64	8651.00	-754.29	390.37	1622315.2	2371739.0	849.32	849.32	152.64	0.00
TD											

Final Station Closure Distance: 849.32' Direction: 152.64°