

VERDAD RESOURCES

WATTENBERG FIELD

10N-61W-21 BASHOR 2133 PAD

BASHOR 2133-03H

Wellbore #1

Plan: Design #1

Standard Planning Report

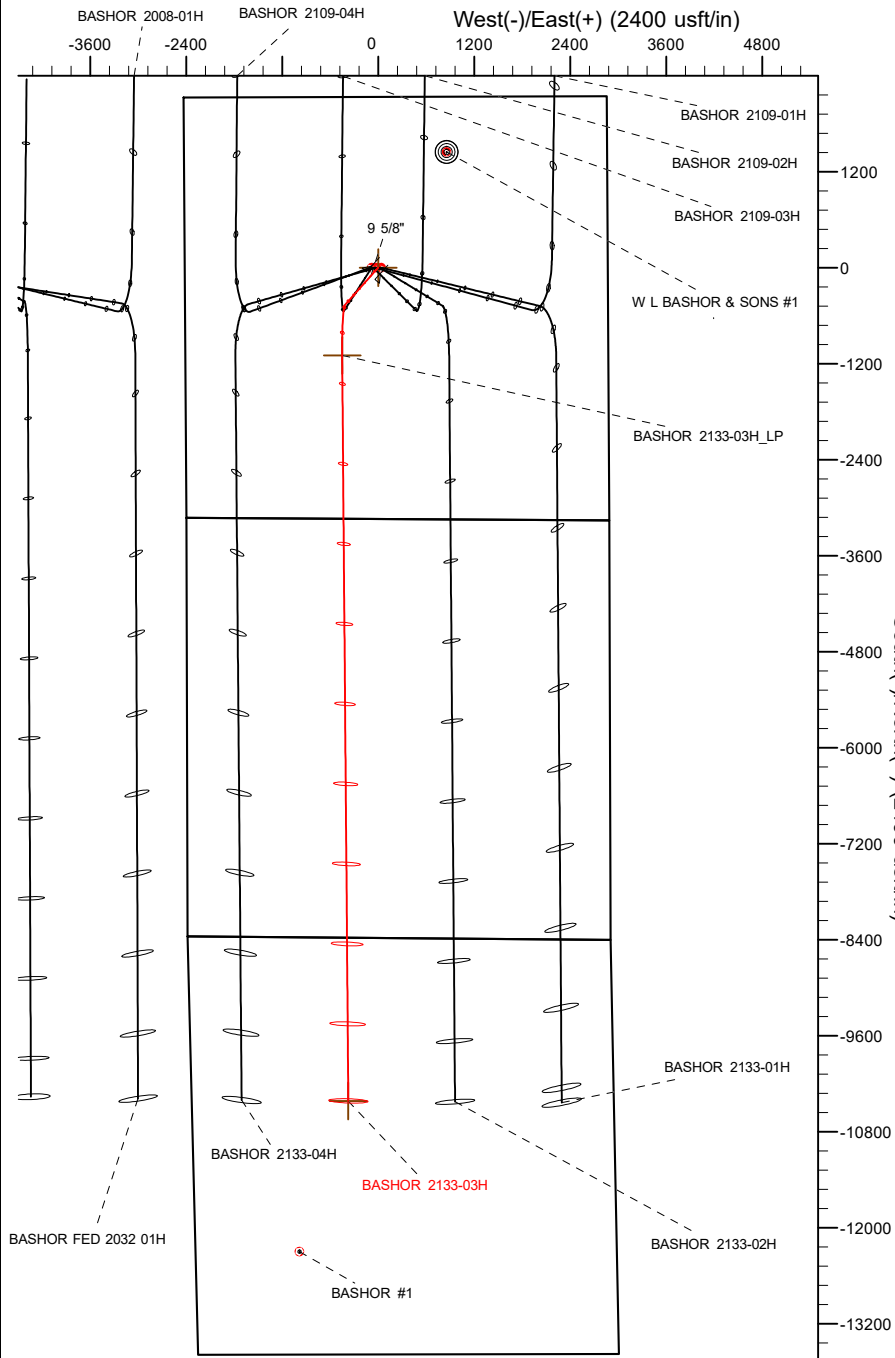
25 April, 2018

Project: WATTENBERG FIELD
 Site: 10N-61W-21 BASHOR 2133 PAD
 Well: BASHOR 2133-03H
 Wellbore: Wellbore #1
 Design: Design #1

VERDAD RESOURCES

CASING DETAILS

TVD	MD	Name	Size
1700.00	1706.78	9 5/8"	9-5/8

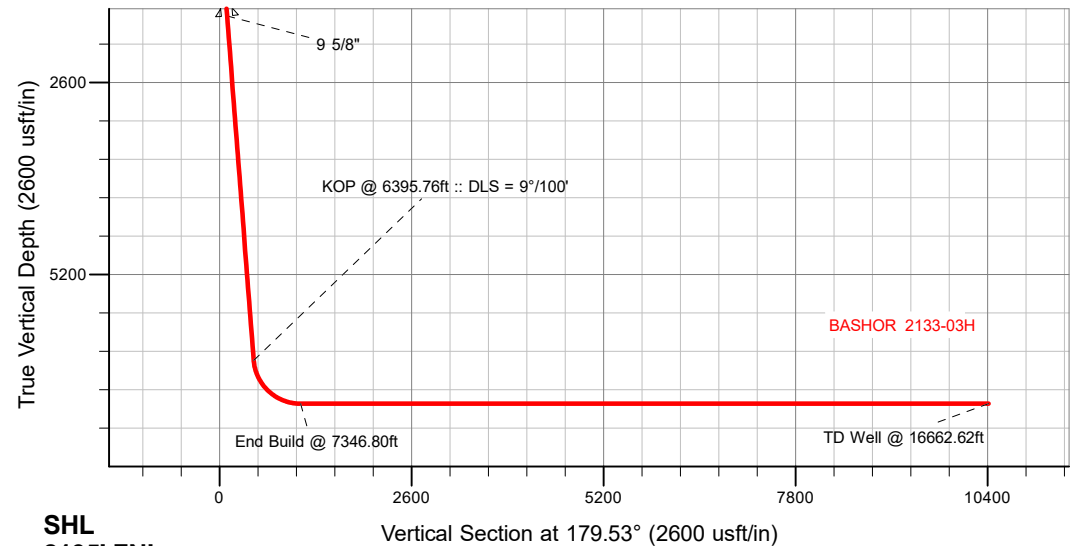


SECTION DETAILS

Sec	MD	Inc	Azi	TVD	+N/-S	+E/-W	Dleg	TFace	VSect	Target
1	0.00	0.00	0.00	0.00	0.00	0.00	0.00	0.00	0.00	
2	250.00	0.00	0.00	250.00	0.00	0.00	0.00	0.00	0.00	
3	547.50	5.95	221.70	546.97	-11.52	-10.27	2.00	221.70	11.44	
4	6395.76	5.95	221.70	6363.72	-464.16	-413.55	0.00	0.00	460.75	
5	7346.80	90.00	179.53	6950.00	-1099.22	-449.32	9.00	-42.33	1095.49	
6	16662.62	90.00	179.53	6950.00	-10414.72	-372.15	0.00	0.00	10411.31	BASHOR 2133-03H_BHL

WELLBORE TARGET DETAILS (LAT/LONG)

Name	TVD	+N/-S	+E/-W	Latitude	Longitude
BASHOR 2133-03H_SHL	0.00	0.00	0.00	40.821041	-104.212321
BASHOR 2133-03H_BHL	6950.00	-10414.72	-372.15	40.792455	-104.213665



SHL
 2135' FNL
 2418' FWL

LP
 2040' FSL
 1962' FWL

BHL
 2040' FNL
 1958' FWL

T
 M Azimuths to True North
 Magnetic North: 7.86°
 Magnetic Field
 Strength: 52566.5snT
 Dip Angle: 67.25°
 Date: 4/24/2018
 Model: IGRF2015

WELL DETAILS: BASHOR 2133-03H

Ground Level = 5038'

RKB = 20' @ 5058.00usft (RIG)

Plan: Design #1 (BASHOR 2133-03H/Wellbore #1)

Created By: _____ Date: 4/25/2018
 Reviewed: _____ Date: _____

Hewlett-Packard

Planning Report

Database:	EDM 5000.14 Single User Db	Local Co-ordinate Reference:	Well BASHOR 2133-03H
Company:	VERDAD RESOURCES	TVD Reference:	RKB = 20' @ 5058.00usft (RIG)
Project:	WATTENBERG FIELD	MD Reference:	RKB = 20' @ 5058.00usft (RIG)
Site:	10N-61W-21 BASHOR 2133 PAD	North Reference:	True
Well:	BASHOR 2133-03H	Survey Calculation Method:	Minimum Curvature
Wellbore:	Wellbore #1		
Design:	Design #1		

Project	WATTENBERG FIELD		
Map System:	US State Plane 1983	System Datum:	Mean Sea Level
Geo Datum:	North American Datum 1983		
Map Zone:	Colorado Northern Zone		

Site	10N-61W-21 BASHOR 2133 PAD			
Site Position:		Northing:	1,544,540.75 usft	Latitude: 40.821040
From:	Lat/Long	Easting:	3,356,431.88 usft	Longitude: -104.212177
Position Uncertainty:	0.00 usft	Slot Radius:	13-3/16 "	Grid Convergence: 0.83 °

Well	BASHOR 2133-03H			
Well Position	+N/-S	0.14 usft	Northing:	1,544,540.31 usft
	+E/-W	-40.02 usft	Easting:	3,356,391.86 usft
Position Uncertainty		3.28 usft	Wellhead Elevation:	Ground Level: 5,038.00 usft

Wellbore	Wellbore #1				
Magnetics	Model Name	Sample Date	Declination (°)	Dip Angle (°)	Field Strength (nT)
	IGRF2015	4/24/2018	7.86	67.25	52,566.49310576

Design	Design #1			
Audit Notes:				
Version:	Phase:	PLAN	Tie On Depth:	0.00
Vertical Section:	Depth From (TVD) (usft)	+N/-S (usft)	+E/-W (usft)	Direction (°)
	0.00	0.00	0.00	179.53

Plan Survey Tool Program	Date	4/25/2018		
Depth From (usft)	Depth To (usft)	Survey (Wellbore)	Tool Name	Remarks
1	0.00	1,700.00	Design #1 (Wellbore #1)	ISCWSA REV 2 MWD Fixed:v2:standard declination
2	1,700.00	16,662.62	Design #1 (Wellbore #1)	ISCWSA REV 2 MWD Fixed:v2:standard declination

Plan Sections										
Measured Depth (usft)	Inclination (°)	Azimuth (°)	Vertical Depth (usft)	+N/-S (usft)	+E/-W (usft)	Dogleg Rate (°/100usft)	Build Rate (°/100usft)	Turn Rate (°/100usft)	TFO (°)	Target
0.00	0.00	0.00	0.00	0.00	0.00	0.00	0.00	0.00	0.00	
250.00	0.00	0.00	250.00	0.00	0.00	0.00	0.00	0.00	0.00	
547.50	5.95	221.70	546.97	-11.52	-10.27	2.00	2.00	0.00	221.70	
6,395.76	5.95	221.70	6,363.72	-464.16	-413.55	0.00	0.00	0.00	0.00	
7,346.80	90.00	179.53	6,950.00	-1,099.22	-449.32	9.00	8.84	-4.43	-42.33	
16,662.62	90.00	179.53	6,950.00	-10,414.72	-372.15	0.00	0.00	0.00	0.00	BASHOR 2133-03H_I

Hewlett-Packard

Planning Report

Database:	EDM 5000.14 Single User Db	Local Co-ordinate Reference:	Well BASHOR 2133-03H
Company:	VERDAD RESOURCES	TVD Reference:	RKB = 20' @ 5058.00usft (RIG)
Project:	WATTENBERG FIELD	MD Reference:	RKB = 20' @ 5058.00usft (RIG)
Site:	10N-61W-21 BASHOR 2133 PAD	North Reference:	True
Well:	BASHOR 2133-03H	Survey Calculation Method:	Minimum Curvature
Wellbore:	Wellbore #1		
Design:	Design #1		

Planned Survey									
Measured Depth (usft)	Inclination (°)	Azimuth (°)	Vertical Depth (usft)	+N/-S (usft)	+E/-W (usft)	Vertical Section (usft)	Dogleg Rate (°/100usft)	Build Rate (°/100usft)	Turn Rate (°/100usft)
0.00	0.00	0.00	0.00	0.00	0.00	0.00	0.00	0.00	0.00
100.00	0.00	0.00	100.00	0.00	0.00	0.00	0.00	0.00	0.00
200.00	0.00	0.00	200.00	0.00	0.00	0.00	0.00	0.00	0.00
250.00	0.00	0.00	250.00	0.00	0.00	0.00	0.00	0.00	0.00
Begin Tangent @ 250.00ft									
300.00	1.00	221.70	300.00	-0.33	-0.29	0.32	2.00	2.00	0.00
400.00	3.00	221.70	399.93	-2.93	-2.61	2.91	2.00	2.00	0.00
500.00	5.00	221.70	499.68	-8.14	-7.25	8.08	2.00	2.00	0.00
547.50	5.95	221.70	546.97	-11.52	-10.27	11.44	2.00	2.00	0.00
End Tangent @ 547.50ft									
600.00	5.95	221.70	599.18	-15.59	-13.89	15.47	0.00	0.00	0.00
700.00	5.95	221.70	698.64	-23.33	-20.78	23.15	0.00	0.00	0.00
800.00	5.95	221.70	798.11	-31.07	-27.68	30.84	0.00	0.00	0.00
900.00	5.95	221.70	897.57	-38.81	-34.57	38.52	0.00	0.00	0.00
1,000.00	5.95	221.70	997.03	-46.55	-41.47	46.20	0.00	0.00	0.00
1,100.00	5.95	221.70	1,096.49	-54.28	-48.37	53.89	0.00	0.00	0.00
1,200.00	5.95	221.70	1,195.95	-62.02	-55.26	61.57	0.00	0.00	0.00
1,300.00	5.95	221.70	1,295.41	-69.76	-62.16	69.25	0.00	0.00	0.00
1,400.00	5.95	221.70	1,394.87	-77.50	-69.05	76.93	0.00	0.00	0.00
1,500.00	5.95	221.70	1,494.33	-85.24	-75.95	84.62	0.00	0.00	0.00
1,600.00	5.95	221.70	1,593.80	-92.98	-82.85	92.30	0.00	0.00	0.00
1,700.00	5.95	221.70	1,693.26	-100.72	-89.74	99.98	0.00	0.00	0.00
1,706.78	5.95	221.70	1,700.00	-101.25	-90.21	100.50	0.00	0.00	0.00
9 5/8"									
1,800.00	5.95	221.70	1,792.72	-108.46	-96.64	107.67	0.00	0.00	0.00
1,900.00	5.95	221.70	1,892.18	-116.20	-103.53	115.35	0.00	0.00	0.00
2,000.00	5.95	221.70	1,991.64	-123.94	-110.43	123.03	0.00	0.00	0.00
2,100.00	5.95	221.70	2,091.10	-131.68	-117.32	130.72	0.00	0.00	0.00
2,200.00	5.95	221.70	2,190.56	-139.42	-124.22	138.40	0.00	0.00	0.00
2,300.00	5.95	221.70	2,290.02	-147.16	-131.12	146.08	0.00	0.00	0.00
2,400.00	5.95	221.70	2,389.49	-154.90	-138.01	153.76	0.00	0.00	0.00
2,500.00	5.95	221.70	2,488.95	-162.64	-144.91	161.45	0.00	0.00	0.00
2,600.00	5.95	221.70	2,588.41	-170.38	-151.80	169.13	0.00	0.00	0.00
2,700.00	5.95	221.70	2,687.87	-178.12	-158.70	176.81	0.00	0.00	0.00
2,800.00	5.95	221.70	2,787.33	-185.86	-165.59	184.50	0.00	0.00	0.00
2,900.00	5.95	221.70	2,886.79	-193.60	-172.49	192.18	0.00	0.00	0.00
3,000.00	5.95	221.70	2,986.25	-201.34	-179.39	199.86	0.00	0.00	0.00
3,100.00	5.95	221.70	3,085.71	-209.08	-186.28	207.54	0.00	0.00	0.00
3,200.00	5.95	221.70	3,185.18	-216.82	-193.18	215.23	0.00	0.00	0.00
3,300.00	5.95	221.70	3,284.64	-224.56	-200.07	222.91	0.00	0.00	0.00
3,400.00	5.95	221.70	3,384.10	-232.30	-206.97	230.59	0.00	0.00	0.00
3,500.00	5.95	221.70	3,483.56	-240.04	-213.87	238.28	0.00	0.00	0.00
3,600.00	5.95	221.70	3,583.02	-247.78	-220.76	245.96	0.00	0.00	0.00
3,700.00	5.95	221.70	3,682.48	-255.52	-227.66	253.64	0.00	0.00	0.00
3,800.00	5.95	221.70	3,781.94	-263.26	-234.55	261.32	0.00	0.00	0.00
3,900.00	5.95	221.70	3,881.40	-271.00	-241.45	269.01	0.00	0.00	0.00
4,000.00	5.95	221.70	3,980.87	-278.74	-248.34	276.69	0.00	0.00	0.00
4,100.00	5.95	221.70	4,080.33	-286.48	-255.24	284.37	0.00	0.00	0.00
4,200.00	5.95	221.70	4,179.79	-294.22	-262.14	292.06	0.00	0.00	0.00
4,300.00	5.95	221.70	4,279.25	-301.96	-269.03	299.74	0.00	0.00	0.00
4,400.00	5.95	221.70	4,378.71	-309.69	-275.93	307.42	0.00	0.00	0.00
4,500.00	5.95	221.70	4,478.17	-317.43	-282.82	315.10	0.00	0.00	0.00
4,600.00	5.95	221.70	4,577.63	-325.17	-289.72	322.79	0.00	0.00	0.00

Hewlett-Packard

Planning Report

Database:	EDM 5000.14 Single User Db	Local Co-ordinate Reference:	Well BASHOR 2133-03H
Company:	VERDAD RESOURCES	TVD Reference:	RKB = 20' @ 5058.00usft (RIG)
Project:	WATTENBERG FIELD	MD Reference:	RKB = 20' @ 5058.00usft (RIG)
Site:	10N-61W-21 BASHOR 2133 PAD	North Reference:	True
Well:	BASHOR 2133-03H	Survey Calculation Method:	Minimum Curvature
Wellbore:	Wellbore #1		
Design:	Design #1		

Planned Survey									
Measured Depth (usft)	Inclination (°)	Azimuth (°)	Vertical Depth (usft)	+N/-S (usft)	+E/-W (usft)	Vertical Section (usft)	Dogleg Rate (°/100usft)	Build Rate (°/100usft)	Turn Rate (°/100usft)
4,700.00	5.95	221.70	4,677.10	-332.91	-296.62	330.47	0.00	0.00	0.00
4,800.00	5.95	221.70	4,776.56	-340.65	-303.51	338.15	0.00	0.00	0.00
4,900.00	5.95	221.70	4,876.02	-348.39	-310.41	345.84	0.00	0.00	0.00
5,000.00	5.95	221.70	4,975.48	-356.13	-317.30	353.52	0.00	0.00	0.00
5,100.00	5.95	221.70	5,074.94	-363.87	-324.20	361.20	0.00	0.00	0.00
5,200.00	5.95	221.70	5,174.40	-371.61	-331.09	368.88	0.00	0.00	0.00
5,300.00	5.95	221.70	5,273.86	-379.35	-337.99	376.57	0.00	0.00	0.00
5,400.00	5.95	221.70	5,373.32	-387.09	-344.89	384.25	0.00	0.00	0.00
5,500.00	5.95	221.70	5,472.79	-394.83	-351.78	391.93	0.00	0.00	0.00
5,600.00	5.95	221.70	5,572.25	-402.57	-358.68	399.62	0.00	0.00	0.00
5,700.00	5.95	221.70	5,671.71	-410.31	-365.57	407.30	0.00	0.00	0.00
5,800.00	5.95	221.70	5,771.17	-418.05	-372.47	414.98	0.00	0.00	0.00
5,900.00	5.95	221.70	5,870.63	-425.79	-379.37	422.66	0.00	0.00	0.00
6,000.00	5.95	221.70	5,970.09	-433.53	-386.26	430.35	0.00	0.00	0.00
6,100.00	5.95	221.70	6,069.55	-441.27	-393.16	438.03	0.00	0.00	0.00
6,200.00	5.95	221.70	6,169.01	-449.01	-400.05	445.71	0.00	0.00	0.00
6,300.00	5.95	221.70	6,268.48	-456.75	-406.95	453.40	0.00	0.00	0.00
6,395.76	5.95	221.70	6,363.72	-464.16	-413.55	460.75	0.00	0.00	0.00
KOP @ 6395.76ft :: DLS = 9°/100'									
6,400.00	6.24	219.33	6,367.94	-464.50	-413.84	461.09	9.00	6.78	-55.80
6,500.00	14.35	195.40	6,466.28	-480.68	-420.59	477.22	9.00	8.11	-23.93
6,600.00	23.12	188.96	6,560.90	-512.08	-426.95	508.56	9.00	8.77	-6.44
6,700.00	32.01	185.95	6,649.47	-557.93	-432.77	554.36	9.00	8.89	-3.01
6,800.00	40.95	184.15	6,729.79	-617.10	-437.90	613.48	9.00	8.94	-1.80
6,900.00	49.91	182.90	6,799.90	-688.13	-442.22	684.48	9.00	8.96	-1.25
7,000.00	58.87	181.95	6,858.07	-769.27	-445.62	765.59	9.00	8.97	-0.96
7,100.00	67.84	181.16	6,902.87	-858.53	-448.01	854.83	9.00	8.97	-0.79
7,200.00	76.82	180.46	6,933.19	-953.71	-449.35	949.99	9.00	8.98	-0.69
7,300.00	85.80	179.82	6,948.28	-1,052.45	-449.58	1,048.73	9.00	8.98	-0.64
7,346.80	90.00	179.53	6,950.00	-1,099.22	-449.32	1,095.49	9.00	8.98	-0.63
End Build @ 7346.80ft									
7,400.00	90.00	179.53	6,950.00	-1,152.41	-448.88	1,148.69	0.00	0.00	0.00
7,500.00	90.00	179.53	6,950.00	-1,252.41	-448.05	1,248.69	0.00	0.00	0.00
7,600.00	90.00	179.53	6,950.00	-1,352.40	-447.22	1,348.69	0.00	0.00	0.00
7,700.00	90.00	179.53	6,950.00	-1,452.40	-446.39	1,448.69	0.00	0.00	0.00
7,800.00	90.00	179.53	6,950.00	-1,552.40	-445.56	1,548.69	0.00	0.00	0.00
7,900.00	90.00	179.53	6,950.00	-1,652.39	-444.73	1,648.69	0.00	0.00	0.00
8,000.00	90.00	179.53	6,950.00	-1,752.39	-443.91	1,748.69	0.00	0.00	0.00
8,100.00	90.00	179.53	6,950.00	-1,852.39	-443.08	1,848.69	0.00	0.00	0.00
8,200.00	90.00	179.53	6,950.00	-1,952.38	-442.25	1,948.69	0.00	0.00	0.00
8,300.00	90.00	179.53	6,950.00	-2,052.38	-441.42	2,048.69	0.00	0.00	0.00
8,400.00	90.00	179.53	6,950.00	-2,152.38	-440.59	2,148.69	0.00	0.00	0.00
8,500.00	90.00	179.53	6,950.00	-2,252.37	-439.76	2,248.69	0.00	0.00	0.00
8,600.00	90.00	179.53	6,950.00	-2,352.37	-438.94	2,348.69	0.00	0.00	0.00
8,700.00	90.00	179.53	6,950.00	-2,452.37	-438.11	2,448.69	0.00	0.00	0.00
8,800.00	90.00	179.53	6,950.00	-2,552.36	-437.28	2,548.69	0.00	0.00	0.00
8,900.00	90.00	179.53	6,950.00	-2,652.36	-436.45	2,648.69	0.00	0.00	0.00
9,000.00	90.00	179.53	6,950.00	-2,752.36	-435.62	2,748.69	0.00	0.00	0.00
9,100.00	90.00	179.53	6,950.00	-2,852.35	-434.79	2,848.69	0.00	0.00	0.00
9,200.00	90.00	179.53	6,950.00	-2,952.35	-433.97	2,948.69	0.00	0.00	0.00
9,300.00	90.00	179.53	6,950.00	-3,052.35	-433.14	3,048.69	0.00	0.00	0.00
9,400.00	90.00	179.53	6,950.00	-3,152.34	-432.31	3,148.69	0.00	0.00	0.00
9,500.00	90.00	179.53	6,950.00	-3,252.34	-431.48	3,248.69	0.00	0.00	0.00
9,600.00	90.00	179.53	6,950.00	-3,352.33	-430.65	3,348.69	0.00	0.00	0.00

Hewlett-Packard

Planning Report

Database:	EDM 5000.14 Single User Db	Local Co-ordinate Reference:	Well BASHOR 2133-03H
Company:	VERDAD RESOURCES	TVD Reference:	RKB = 20' @ 5058.00usft (RIG)
Project:	WATTENBERG FIELD	MD Reference:	RKB = 20' @ 5058.00usft (RIG)
Site:	10N-61W-21 BASHOR 2133 PAD	North Reference:	True
Well:	BASHOR 2133-03H	Survey Calculation Method:	Minimum Curvature
Wellbore:	Wellbore #1		
Design:	Design #1		

Planned Survey										
Measured Depth (usft)	Inclination (°)	Azimuth (°)	Vertical Depth (usft)	+N/-S (usft)	+E/-W (usft)	Vertical Section (usft)	Dogleg Rate (°/100usft)	Build Rate (°/100usft)	Turn Rate (°/100usft)	
9,700.00	90.00	179.53	6,950.00	-3,452.33	-429.82	3,448.69	0.00	0.00	0.00	
9,800.00	90.00	179.53	6,950.00	-3,552.33	-429.00	3,548.69	0.00	0.00	0.00	
9,900.00	90.00	179.53	6,950.00	-3,652.32	-428.17	3,648.69	0.00	0.00	0.00	
10,000.00	90.00	179.53	6,950.00	-3,752.32	-427.34	3,748.69	0.00	0.00	0.00	
10,100.00	90.00	179.53	6,950.00	-3,852.32	-426.51	3,848.69	0.00	0.00	0.00	
10,200.00	90.00	179.53	6,950.00	-3,952.31	-425.68	3,948.69	0.00	0.00	0.00	
10,300.00	90.00	179.53	6,950.00	-4,052.31	-424.85	4,048.69	0.00	0.00	0.00	
10,400.00	90.00	179.53	6,950.00	-4,152.31	-424.03	4,148.69	0.00	0.00	0.00	
10,500.00	90.00	179.53	6,950.00	-4,252.30	-423.20	4,248.69	0.00	0.00	0.00	
10,600.00	90.00	179.53	6,950.00	-4,352.30	-422.37	4,348.69	0.00	0.00	0.00	
10,700.00	90.00	179.53	6,950.00	-4,452.30	-421.54	4,448.69	0.00	0.00	0.00	
10,800.00	90.00	179.53	6,950.00	-4,552.29	-420.71	4,548.69	0.00	0.00	0.00	
10,900.00	90.00	179.53	6,950.00	-4,652.29	-419.88	4,648.69	0.00	0.00	0.00	
11,000.00	90.00	179.53	6,950.00	-4,752.29	-419.06	4,748.69	0.00	0.00	0.00	
11,100.00	90.00	179.53	6,950.00	-4,852.28	-418.23	4,848.69	0.00	0.00	0.00	
11,200.00	90.00	179.53	6,950.00	-4,952.28	-417.40	4,948.69	0.00	0.00	0.00	
11,300.00	90.00	179.53	6,950.00	-5,052.28	-416.57	5,048.69	0.00	0.00	0.00	
11,400.00	90.00	179.53	6,950.00	-5,152.27	-415.74	5,148.69	0.00	0.00	0.00	
11,500.00	90.00	179.53	6,950.00	-5,252.27	-414.91	5,248.69	0.00	0.00	0.00	
11,600.00	90.00	179.53	6,950.00	-5,352.27	-414.09	5,348.69	0.00	0.00	0.00	
11,700.00	90.00	179.53	6,950.00	-5,452.26	-413.26	5,448.69	0.00	0.00	0.00	
11,800.00	90.00	179.53	6,950.00	-5,552.26	-412.43	5,548.69	0.00	0.00	0.00	
11,900.00	90.00	179.53	6,950.00	-5,652.26	-411.60	5,648.69	0.00	0.00	0.00	
12,000.00	90.00	179.53	6,950.00	-5,752.25	-410.77	5,748.69	0.00	0.00	0.00	
12,100.00	90.00	179.53	6,950.00	-5,852.25	-409.94	5,848.69	0.00	0.00	0.00	
12,200.00	90.00	179.53	6,950.00	-5,952.25	-409.12	5,948.69	0.00	0.00	0.00	
12,300.00	90.00	179.53	6,950.00	-6,052.24	-408.29	6,048.69	0.00	0.00	0.00	
12,400.00	90.00	179.53	6,950.00	-6,152.24	-407.46	6,148.69	0.00	0.00	0.00	
12,500.00	90.00	179.53	6,950.00	-6,252.24	-406.63	6,248.69	0.00	0.00	0.00	
12,600.00	90.00	179.53	6,950.00	-6,352.23	-405.80	6,348.69	0.00	0.00	0.00	
12,700.00	90.00	179.53	6,950.00	-6,452.23	-404.97	6,448.69	0.00	0.00	0.00	
12,800.00	90.00	179.53	6,950.00	-6,552.23	-404.15	6,548.69	0.00	0.00	0.00	
12,900.00	90.00	179.53	6,950.00	-6,652.22	-403.32	6,648.69	0.00	0.00	0.00	
13,000.00	90.00	179.53	6,950.00	-6,752.22	-402.49	6,748.69	0.00	0.00	0.00	
13,100.00	90.00	179.53	6,950.00	-6,852.21	-401.66	6,848.69	0.00	0.00	0.00	
13,200.00	90.00	179.53	6,950.00	-6,952.21	-400.83	6,948.69	0.00	0.00	0.00	
13,300.00	90.00	179.53	6,950.00	-7,052.21	-400.00	7,048.69	0.00	0.00	0.00	
13,400.00	90.00	179.53	6,950.00	-7,152.20	-399.18	7,148.69	0.00	0.00	0.00	
13,500.00	90.00	179.53	6,950.00	-7,252.20	-398.35	7,248.69	0.00	0.00	0.00	
13,600.00	90.00	179.53	6,950.00	-7,352.20	-397.52	7,348.69	0.00	0.00	0.00	
13,700.00	90.00	179.53	6,950.00	-7,452.19	-396.69	7,448.69	0.00	0.00	0.00	
13,800.00	90.00	179.53	6,950.00	-7,552.19	-395.86	7,548.69	0.00	0.00	0.00	
13,900.00	90.00	179.53	6,950.00	-7,652.19	-395.03	7,648.69	0.00	0.00	0.00	
14,000.00	90.00	179.53	6,950.00	-7,752.18	-394.21	7,748.69	0.00	0.00	0.00	
14,100.00	90.00	179.53	6,950.00	-7,852.18	-393.38	7,848.69	0.00	0.00	0.00	
14,200.00	90.00	179.53	6,950.00	-7,952.18	-392.55	7,948.69	0.00	0.00	0.00	
14,300.00	90.00	179.53	6,950.00	-8,052.17	-391.72	8,048.69	0.00	0.00	0.00	
14,400.00	90.00	179.53	6,950.00	-8,152.17	-390.89	8,148.69	0.00	0.00	0.00	
14,500.00	90.00	179.53	6,950.00	-8,252.17	-390.06	8,248.69	0.00	0.00	0.00	
14,600.00	90.00	179.53	6,950.00	-8,352.16	-389.24	8,348.69	0.00	0.00	0.00	
14,700.00	90.00	179.53	6,950.00	-8,452.16	-388.41	8,448.69	0.00	0.00	0.00	
14,800.00	90.00	179.53	6,950.00	-8,552.16	-387.58	8,548.69	0.00	0.00	0.00	
14,900.00	90.00	179.53	6,950.00	-8,652.15	-386.75	8,648.69	0.00	0.00	0.00	
15,000.00	90.00	179.53	6,950.00	-8,752.15	-385.92	8,748.69	0.00	0.00	0.00	

Hewlett-Packard

Planning Report

Database:	EDM 5000.14 Single User Db	Local Co-ordinate Reference:	Well BASHOR 2133-03H
Company:	VERDAD RESOURCES	TVD Reference:	RKB = 20' @ 5058.00usft (RIG)
Project:	WATTENBERG FIELD	MD Reference:	RKB = 20' @ 5058.00usft (RIG)
Site:	10N-61W-21 BASHOR 2133 PAD	North Reference:	True
Well:	BASHOR 2133-03H	Survey Calculation Method:	Minimum Curvature
Wellbore:	Wellbore #1		
Design:	Design #1		

Planned Survey										
Measured Depth (usft)	Inclination (°)	Azimuth (°)	Vertical Depth (usft)	+N/-S (usft)	+E/-W (usft)	Vertical Section (usft)	Dogleg Rate (°/100usft)	Build Rate (°/100usft)	Turn Rate (°/100usft)	
15,100.00	90.00	179.53	6,950.00	-8,852.15	-385.09	8,848.69	0.00	0.00	0.00	
15,200.00	90.00	179.53	6,950.00	-8,952.14	-384.27	8,948.69	0.00	0.00	0.00	
15,300.00	90.00	179.53	6,950.00	-9,052.14	-383.44	9,048.69	0.00	0.00	0.00	
15,400.00	90.00	179.53	6,950.00	-9,152.14	-382.61	9,148.69	0.00	0.00	0.00	
15,500.00	90.00	179.53	6,950.00	-9,252.13	-381.78	9,248.69	0.00	0.00	0.00	
15,600.00	90.00	179.53	6,950.00	-9,352.13	-380.95	9,348.69	0.00	0.00	0.00	
15,700.00	90.00	179.53	6,950.00	-9,452.13	-380.12	9,448.69	0.00	0.00	0.00	
15,800.00	90.00	179.53	6,950.00	-9,552.12	-379.30	9,548.69	0.00	0.00	0.00	
15,900.00	90.00	179.53	6,950.00	-9,652.12	-378.47	9,648.69	0.00	0.00	0.00	
16,000.00	90.00	179.53	6,950.00	-9,752.12	-377.64	9,748.69	0.00	0.00	0.00	
16,100.00	90.00	179.53	6,950.00	-9,852.11	-376.81	9,848.69	0.00	0.00	0.00	
16,200.00	90.00	179.53	6,950.00	-9,952.11	-375.98	9,948.69	0.00	0.00	0.00	
16,300.00	90.00	179.53	6,950.00	-10,052.11	-375.15	10,048.69	0.00	0.00	0.00	
16,400.00	90.00	179.53	6,950.00	-10,152.10	-374.33	10,148.69	0.00	0.00	0.00	
16,500.00	90.00	179.53	6,950.00	-10,252.10	-373.50	10,248.69	0.00	0.00	0.00	
16,600.00	90.00	179.53	6,950.00	-10,352.09	-372.67	10,348.69	0.00	0.00	0.00	
16,662.62	90.00	179.53	6,950.00	-10,414.72	-372.15	10,411.31	0.00	0.00	0.00	
TD Well @ 16662.62ft										

Casing Points					
Measured Depth (usft)	Vertical Depth (usft)	Name		Casing Diameter (")	Hole Diameter (")
1,706.78	1,700.00	9 5/8"		9-5/8	13-1/2

Plan Annotations					
Measured Depth (usft)	Vertical Depth (usft)	Local Coordinates		Comment	
250.00	250.00	+N/-S (usft)	+E/-W (usft)	Begin Tangent @ 250.00ft	
547.50	546.97	-11.52	-10.27	End Tangent @ 547.50ft	
6,395.76	6,363.72	-464.16	-413.55	KOP @ 6395.76ft :: DLS = 9°/100'	
7,346.80	6,950.00	-1,099.22	-449.32	End Build @ 7346.80ft	
16,662.62	6,950.00	-10,414.72	-372.15	TD Well @ 16662.62ft	