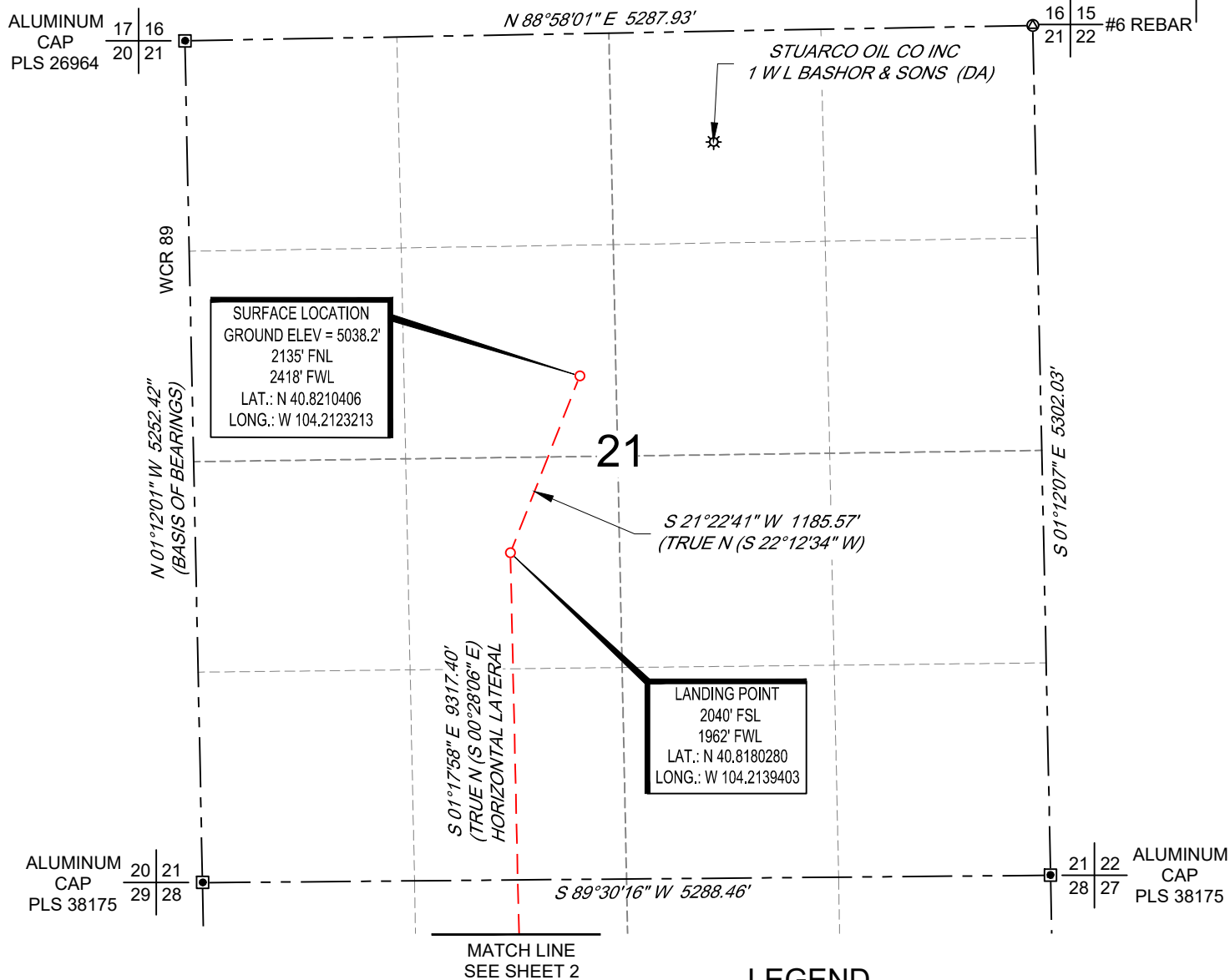


SCALE: 1" = 1000'  
0' 500' 1000'

## WELL LOCATION MAP

SHL SE/4 NW/4, SECTION 21, TOWNSHIP 10-N, RANGE 61-W  
LPL NE/4 SW/4, SECTION 21, TOWNSHIP 10-N, RANGE 61-W  
BHL SE/4 NW/4, SECTION 33, TOWNSHIP 10-N, RANGE 61-W  
WELD COUNTY, COLORADO



## LEGEND

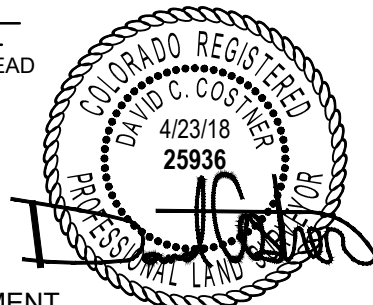


WELLHEAD

## NOTES

1. Horizontal (NAD 83) and vertical (NAVD 88) datum is based on the Trimble VRS Network or OPUS Solution.
2. All directions, distances, and dimensions shown hereon are based on coordinates from the "Colorado coordinate system of 1983 north zone" (article 52 of title 38, C.R.S.).
3. All section line dimensions shown hereon are based on field measurements of existing monuments and/or physical evidence found in the field unless otherwise indicated.
4. Physical features shown hereon are for graphical representation only.
5. See Form 2A, if applicable for visible improvements within 500' of wellhead.
6. Distances to nearest section lines are measured perpendicularly.
7. This is not a land survey nor land survey plat.

PDOP Reading: 1.5 Instrument Operator: **Joseph Digregorio**  
Date Surveyed: **04/06/2018**



## SURVEYOR'S STATEMENT

The undersigned hereby states that the well location shown hereon was staked on the ground based on existing monumentation and/or physical evidence found in the field and is correct to the best of my knowledge, information and belief.



VERDAD RESOURCES  
**BASHOR 2133-03H**  
**JOB NO. 116680**

JLS	04/23/2018	REVISION:	
SHEET :	1 OF 3	INT	DATE
FILE:LO_BASHOR_2133_03H			

SCALE: 1" = 1000'

0' 500' 1000'

# HORIZONTAL LATERAL LOCATION MAP

SHL SE/4 NW/4, SECTION 21, TOWNSHIP 10-N, RANGE 61-W  
 LPL NE/4 SW/4, SECTION 21, TOWNSHIP 10-N, RANGE 61-W  
 BHL SE/4 NW/4, SECTION 33, TOWNSHIP 10-N, RANGE 61-W  
 WELD COUNTY, COLORADO



N

MATCH LINE  
SEE SHEET 1

ALUMINUM  
CAP  
PLS 38175

20 | 21  
29 | 28

N 89°30'16" E 5288.46'

21 | 22  
28 | 27

ALUMINUM  
CAP  
PLS 38175

WCR 89

NOBLE ENERGY INC.  
GQ28-68HN CLYDE (AL)

N 00°59'24" W 5231.82'

S 01°17'58" E 9317.40'  
(TRUE N (S 00°28'06" E)  
HORIZONTAL LATERAL

28

S 00°59'21" E 5244.51'

ALUMINUM  
CAP  
PLS 38175

29 | 28  
32 | 33

S 89°38'31" W 5288.51'

28 | 27  
33 | 34

CALCULATED  
CORNER

MATCH LINE  
SEE SHEET 3

## LEGEND



WELLHEAD



VERDAD RESOURCES  
BASHOR 2133-03H  
JOB NO. 116680

JLS	04/23/2018	REVISION:	
SHEET :	2 OF 3	INT	DATE
FILE:LO_BASHOR_2133_03H			

**TOPOGRAPHIC**  
 LOYALTY INNOVATION LEGACY  
 520 Stacy Court Ste B, Lafayette, CO 80026  
 303.666.0379 www.topographic.com

SCALE: 1" = 1000'

0' 500' 1000'

# BOTTOM HOLE MAP

SHL SE/4 NW/4, SECTION 21, TOWNSHIP 10-N, RANGE 61-W  
 LPL NE/4 SW/4, SECTION 21, TOWNSHIP 10-N, RANGE 61-W  
 BHL SE/4 NW/4, SECTION 33, TOWNSHIP 10-N, RANGE 61-W  
 WELD COUNTY, COLORADO



MATCH LINE  
 SEE SHEET 2

N 89°38'31" E 5288.51'

28 27  
33 34 CALCULATED CORNER

29 28  
32 33  
ALUMINUM CAP  
 PLS 38175

S 01°17'58" E 9317.40'  
 (TRUE N (S 00°28'06" E)  
 HORIZONTAL LATERAL

BOTTOM HOLE LOCATION  
 2040' FNL  
 1958' FWL  
 LAT.: N 40.7924553  
 LONG.: W 104.2136653

33

N 02°17'16" W 5231.20'

WCR 89

RUTLEDGE AND FRANK E  
 BOARD JR IVAN W  
 1 BASHOR (DA)

S 01°59'23" E 5177.38'

ALUMINUM CAP  
 PLS 28258

32 33  
05 04

S 89°03'54" W 5260.04'

WCR 110

33 34  
04 03 ALUMINUM CAP  
 PLS 28258

## LEGEND



WELLHEAD



VERDAD RESOURCES  
 BASHOR 2133-03H  
 JOB NO. 116680

JLS	04/23/2018	REVISION:	
SHEET :	3 OF 3	INT	DATE
FILE:LO_BASHOR_2133_03H			

**TOPOGRAPHIC**  
 LOYALTY INNOVATION LEGACY  
 520 Stacy Court Ste B, Lafayette, CO 80026  
 303.666.0379 www.topographic.com