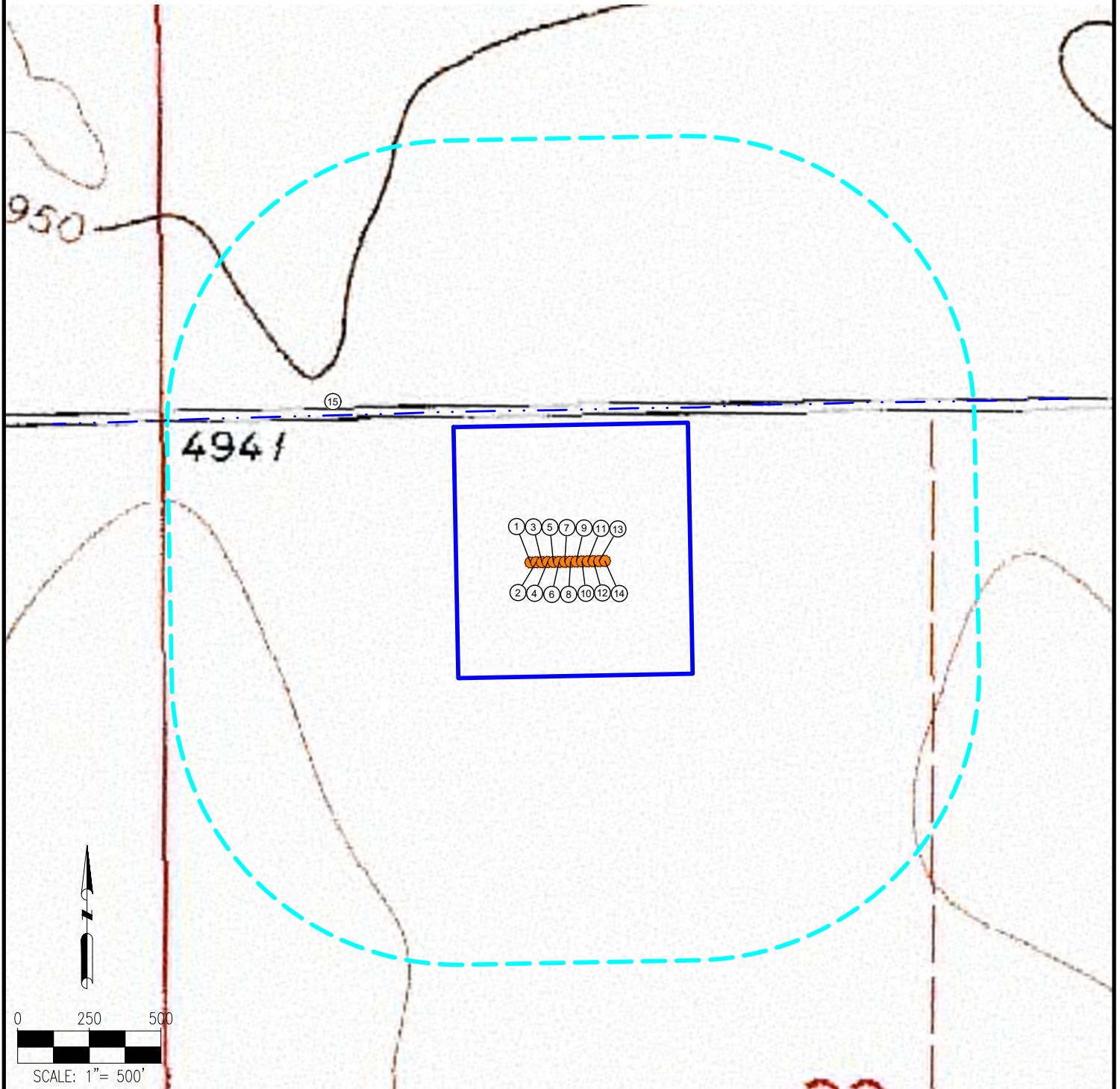


# GOLDEN CASCADE PAD HYDROLOGY MAP



MEASUREMENTS ARE MADE FROM THE NEAREST EDGE OF THE DISTURBANCE AREA.

1. GOLDEN CASCADE 33-1HC
2. GOLDEN CASCADE 33-2HN
3. GOLDEN CASCADE 33-3HN
4. GOLDEN CASCADE 33-4HC
5. GOLDEN CASCADE 33-5HN

6. GOLDEN CASCADE 33-6HN
7. GOLDEN CASCADE FED 33-7HN
8. GOLDEN CASCADE FED 33-8HN
9. GOLDEN CASCADE FED 33-9HC
10. GOLDEN CASCADE FED 33-10HN

11. GOLDEN CASCADE FED 33-11HN
12. GOLDEN CASCADE FED 33-12HN
13. GOLDEN CASCADE FED 33-13HC
14. GOLDEN CASCADE FED 33-14HN
15. DITCH IS 53' N

## LEGEND:

- = PROPOSED WELL
- = DITCH
- ▬ = DISTURBANCE AREA
- = 1000' RADIUS

DISCLAIMER:  
THIS PLOT DOES NOT REPRESENT A MONUMENTED LAND SURVEY AND SHOULD NOT BE RELIED UPON TO DETERMINE BOUNDARY LINES, PROPERTY OWNERSHIP OR OTHER PROPERTY INTERESTS. PARCEL LINES, IF DEPICTED HAVE NOT BEEN FIELD VERIFIED AND MAY BE BASED UPON PUBLICLY AVAILABLE DATA THAT ALSO HAS NOT BEEN INDEPENDENTLY VERIFIED.

DATA SOURCE:  
TOPO MAP: USGS  
NHD: USGS  
PUBLICLY AVAILABLE DATA SOURCES HAVE NOT BEEN INDEPENDENTLY VERIFIED BY ASCENT.



7535 Hilltop Circle  
Denver, CO 80221  
(303) 928-7128  
www.ascentgeomatics.com

FIELD DATE:  
04-26-18

DRAWING DATE:  
05-02-18

BY:  
CAJ

CHECKED:  
IJM

SITE NAME:  
GOLDEN CASCADE PAD

SURFACE LOCATION:

NE 1/4 NW 1/4 SEC. 33, T9N, R60W, 6TH P.M.  
WELD COUNTY, COLORADO

PREPARED FOR:

