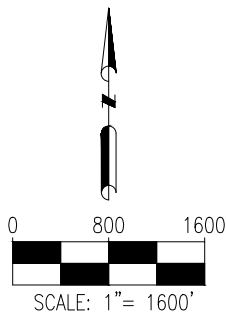
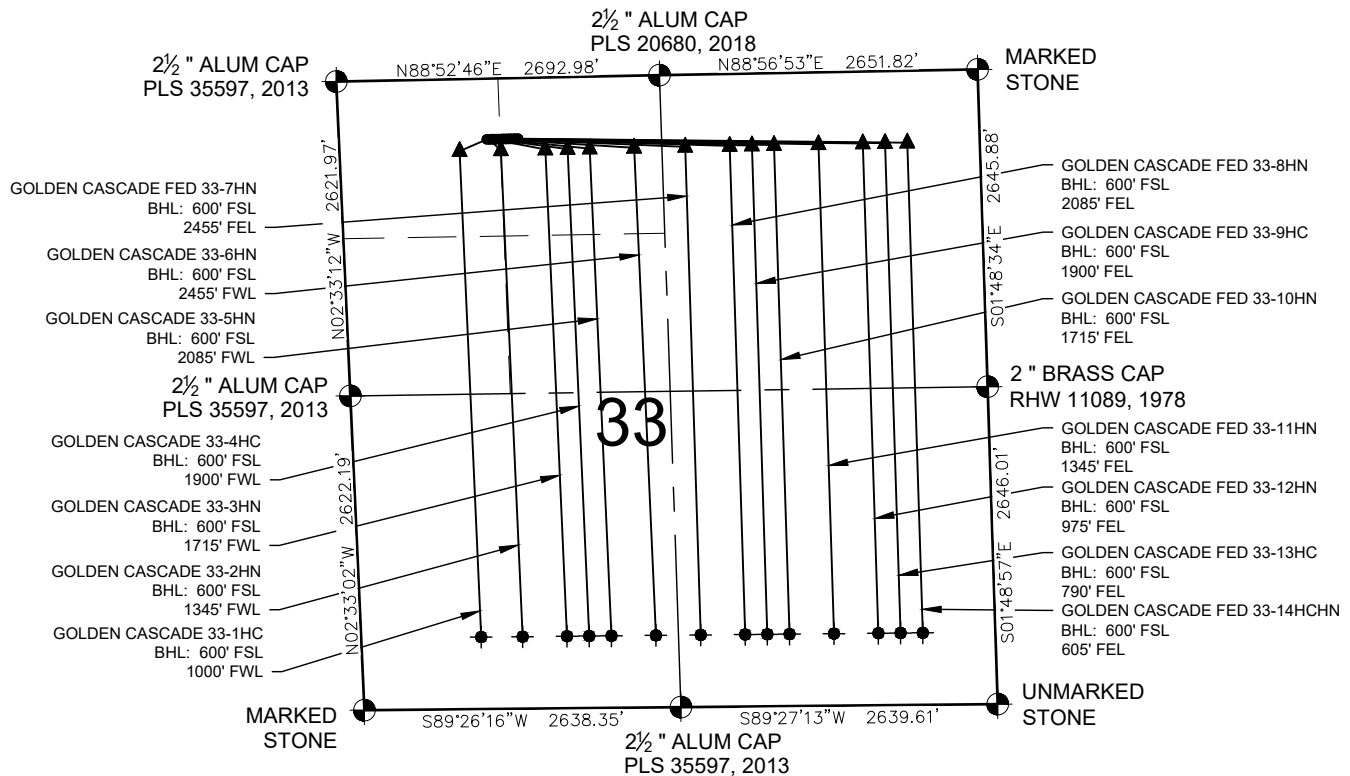


GOLDEN CASCADE PAD MULTI-WELL PLAN



LEGEND

- = EXISTING MONUMENT ● = BOTTOM HOLE
- = CALCULATED POSITION ▲ = LANDING POINT
- = PROPOSED WELL BHL = BOTTOM HOLE LOCATION
- ◆ = EXISTING WELL

NOTES:

1. THIS FIELD SURVEY CONFORMS TO THE MINIMUM STANDARDS SET BY THE C.O.G.C.C., RULE NO. 215
2. ALL DISTANCES AND BEARINGS SHOWN HEREON ARE GROUND VALUES AS GPS MEASURED IN THE FIELD, WITH TIES TO WELLS MEASURED PERPENDICULAR TO SECTION LINES. THIS LOW DISTORTION PROJECTION (LDP) IS BASED ON THE NORTH AMERICAN DATUM OF 1983, U.S. SURVEY FOOT WITH A LATITUDE ORIGIN OF 40.655085°N, A CENTRAL MERIDIAN LONGITUDE OF 104.086861°W, AND A SCALE FACTOR ON THE CENTRAL MERIDIAN OF 1.000232 (EXACT). THE LDP BASIS OF BEARINGS IS GEODETIC NORTH.
3. FIELD VERIFICATION OF MONUMENTS COMPLETED WITHIN 1 YEAR OF SIGNATURE DATE.

NOTES:

- GOLDEN CASCADE 33-1HC TO BE AT 506' FNL & 1232' FWL. BOTTOM HOLE AT 600' FSL & 1000' FWL, SEC. 33.
- GOLDEN CASCADE 33-2HN TO BE AT 506' FNL & 1252' FWL. BOTTOM HOLE AT 600' FSL & 1345' FWL, SEC. 33.
- GOLDEN CASCADE 33-3HN TO BE AT 506' FNL & 1272' FWL. BOTTOM HOLE AT 600' FSL & 1715' FWL, SEC. 33.
- GOLDEN CASCADE 33-4HC TO BE AT 506' FNL & 1292' FWL. BOTTOM HOLE AT 600' FSL & 1900' FWL, SEC. 33.
- GOLDEN CASCADE 33-5HN TO BE AT 506' FNL & 1312' FWL. BOTTOM HOLE AT 600' FSL & 2085' FWL, SEC. 33.
- GOLDEN CASCADE 33-6HN TO BE AT 506' FNL & 1332' FWL. BOTTOM HOLE AT 600' FSL & 2455' FWL, SEC. 33.
- GOLDEN CASCADE FED 33-7HN TO BE AT 506' FNL & 1352' FWL. BOTTOM HOLE AT 600' FSL & 2455' FEL, SEC. 33.
- GOLDEN CASCADE FED 33-8HN TO BE AT 506' FNL & 1372' FWL. BOTTOM HOLE AT 600' FSL & 2085' FEL, SEC. 33.
- GOLDEN CASCADE FED 33-9HC TO BE AT 506' FNL & 1392' FWL. BOTTOM HOLE AT 600' FSL & 1900' FEL, SEC. 33.
- GOLDEN CASCADE FED 33-10HN TO BE AT 506' FNL & 1412' FWL. BOTTOM HOLE AT 600' FSL & 1715' FEL, SEC. 33.
- GOLDEN CASCADE FED 33-11HN TO BE AT 506' FNL & 1432' FWL. BOTTOM HOLE AT 600' FSL & 1345' FEL, SEC. 33.
- GOLDEN CASCADE FED 33-12HN TO BE AT 506' FNL & 1452' FWL. BOTTOM HOLE AT 600' FSL & 975' FEL, SEC. 33.
- GOLDEN CASCADE FED 33-13HC TO BE AT 506' FNL & 1472' FWL. BOTTOM HOLE AT 600' FSL & 790' FEL, SEC. 33.
- GOLDEN CASCADE FED 33-14HCN TO BE AT 506' FNL & 1492' FWL. BOTTOM HOLE AT 600' FSL & 605' FEL, SEC. 33.