

Ursa Operating Company LLC
Weinreis Well A-5 Garfield
County, CO



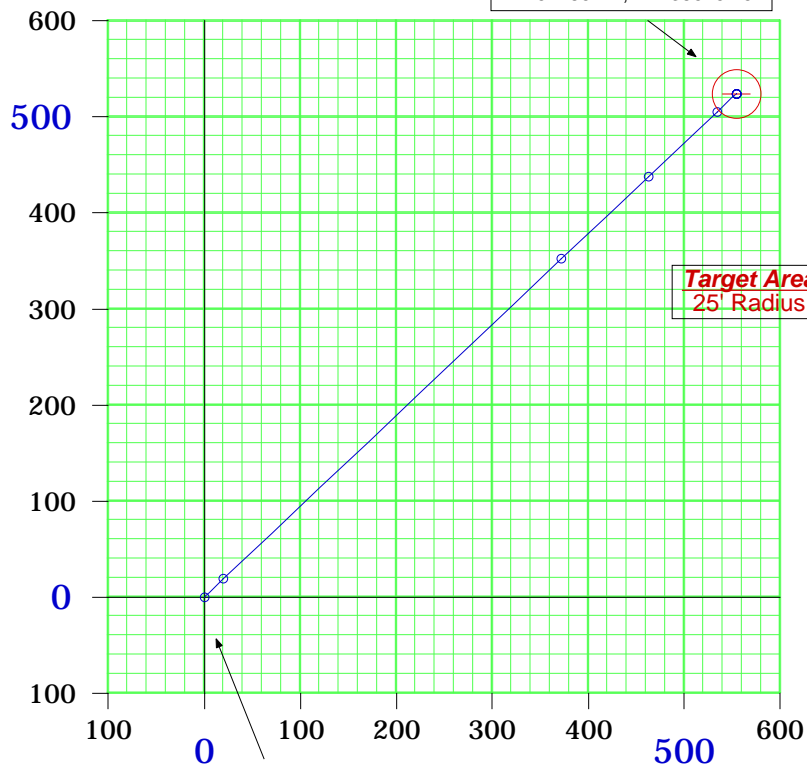
Horizontal Plan
1" = 200'



Proposed Target
762.86' Displacement
@ 46.6° Azimuth
North-524.13' East-554.29'
TVD-6053' MD-6105'
Y=1624861.7', X=2386454.5'

Vertical Section
1" = 2000'

Plane of Proposal
46.6° Azimuth



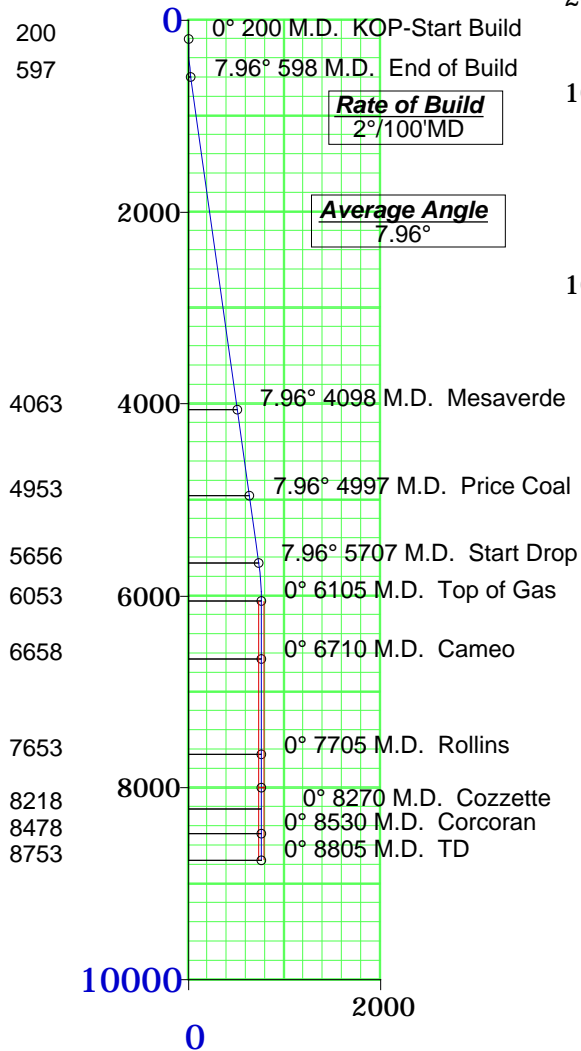
Surface Location
Y=1624337.53'
X=2385900.22'
NAD 83

Formation	TVD
Mesaverde	4063
Price Coal	4953
Top Gas	6053
Cameo	6658
Rollins SS	7653
Cozzette	8218
Corcoran	8478
TD	8753

Rate of Drop
2°/100' MD

Rate of Build
2°/100' MD

Average Angle
7.96°



Measured Depth Feet	BORE Inc Degrees	HOLE Direction Degrees	True Vertical Depth Feet	RECTANGULAR COORDINATES		LAMBERT COORDINATES		Vertical Section Feet	CLOSURES		Dogleg Severity Deg/100'
				North(-South)	East(-West)	Y	X		Distance	Direction	
				Feet	Feet	Feet	Feet		Feet	Deg	
KOP-Start Build	200.00	0.00	0.00	200.00	0.00	0.00	1624337.5	2385900.2	0.00	0.00	0.00
	300.00	2.00	46.60	299.98	1.20	1.27	1624338.7	2385901.5	1.75	1.75	46.60
	400.00	4.00	46.60	399.84	4.79	5.07	1624342.3	2385905.3	6.98	6.98	46.60
	500.00	6.00	46.60	499.45	10.78	11.40	1624348.3	2385911.6	15.69	15.69	46.60
End of Build	598.11	7.96	46.60	596.83	18.98	20.07	1624356.5	2385920.3	27.62	27.62	46.60
	1098.11	7.96	46.60	1092.01	66.56	70.39	1624404.1	2385970.6	96.88	96.88	46.60
	1598.11	7.96	46.60	1587.19	114.14	120.71	1624451.7	2386020.9	166.13	166.13	46.60
	2098.11	7.96	46.60	2082.37	161.73	171.04	1624499.3	2386071.3	235.39	235.39	46.60
	2598.11	7.96	46.60	2577.55	209.31	221.36	1624546.8	2386121.6	304.65	304.65	46.60
	3098.11	7.96	46.60	3072.73	256.90	271.68	1624594.4	2386171.9	373.91	373.91	46.60
	3598.11	7.96	46.60	3567.91	304.48	322.00	1624642.0	2386222.2	443.17	443.17	46.60
Mesaverde	4098.02	7.96	46.60	4063.00	352.06	372.32	1624689.6	2386272.5	512.41	512.41	46.60
	4598.02	7.96	46.60	4558.18	399.64	422.64	1624737.2	2386322.9	581.67	581.67	46.60
	4996.69	7.96	46.60	4953.00	437.58	462.76	1624775.1	2386363.0	636.89	636.89	46.60
Price Coal	5496.69	7.96	46.60	5448.18	485.17	513.09	1624822.7	2386413.3	706.15	706.15	46.60
	5706.72	7.96	46.60	5656.19	505.16	534.23	1624842.7	2386434.4	735.24	735.24	46.60
Start Drop	5806.72	5.96	46.60	5755.45	513.49	543.03	1624851.0	2386443.3	747.36	747.36	46.60
	5906.72	3.96	46.60	5855.07	519.43	549.32	1624857.0	2386449.5	756.01	756.01	46.60
	6006.72	1.96	46.60	5954.93	522.98	553.07	1624860.5	2386453.3	761.18	761.18	46.60
Top of Gas	6104.83	0.00	46.60	6053.03	524.13	554.29	1624861.7	2386454.5	762.86	762.86	46.60
Cameo	6709.81	0.00	46.60	6658.00	524.13	554.29	1624861.7	2386454.5	762.86	762.86	46.60

Ursa Operating Company LLC
Weinreis Well A-5 Garfield
County, CO



Page: 2

Minimum of Curvature
Slot Location: 1624337.53', 2385900.22'
Plane of Vertical Section: 46.60°

Measured Depth Feet	BORE Inc Degrees	HOLE Direction Degrees	True Vertical Depth Feet	RECTANGULAR COORDINATES		LAMBERT COORDINATES		Vertical Section Feet	CLOSURES		Dogleg Severity Deg/100'
				North(-South) Feet	East(-West) Feet	Y Feet	X Feet		Distance Feet	Direction Deg	
7704.81	0.00	46.60	7653.00	524.13	554.29	1624861.7	2386454.5	762.86	762.86	46.60	0.00
Rollins											
8269.81	0.00	46.60	8218.00	524.13	554.29	1624861.7	2386454.5	762.86	762.86	46.60	0.00
Cozzette											
8529.81	0.00	46.60	8478.00	524.13	554.29	1624861.7	2386454.5	762.86	762.86	46.60	0.00
Corcoran											
8804.81	0.00	46.60	8753.00	524.13	554.29	1624861.7	2386454.5	762.86	762.86	46.60	0.00

TD

Final Station Closure Distance: 762.86' Direction: 46.60°