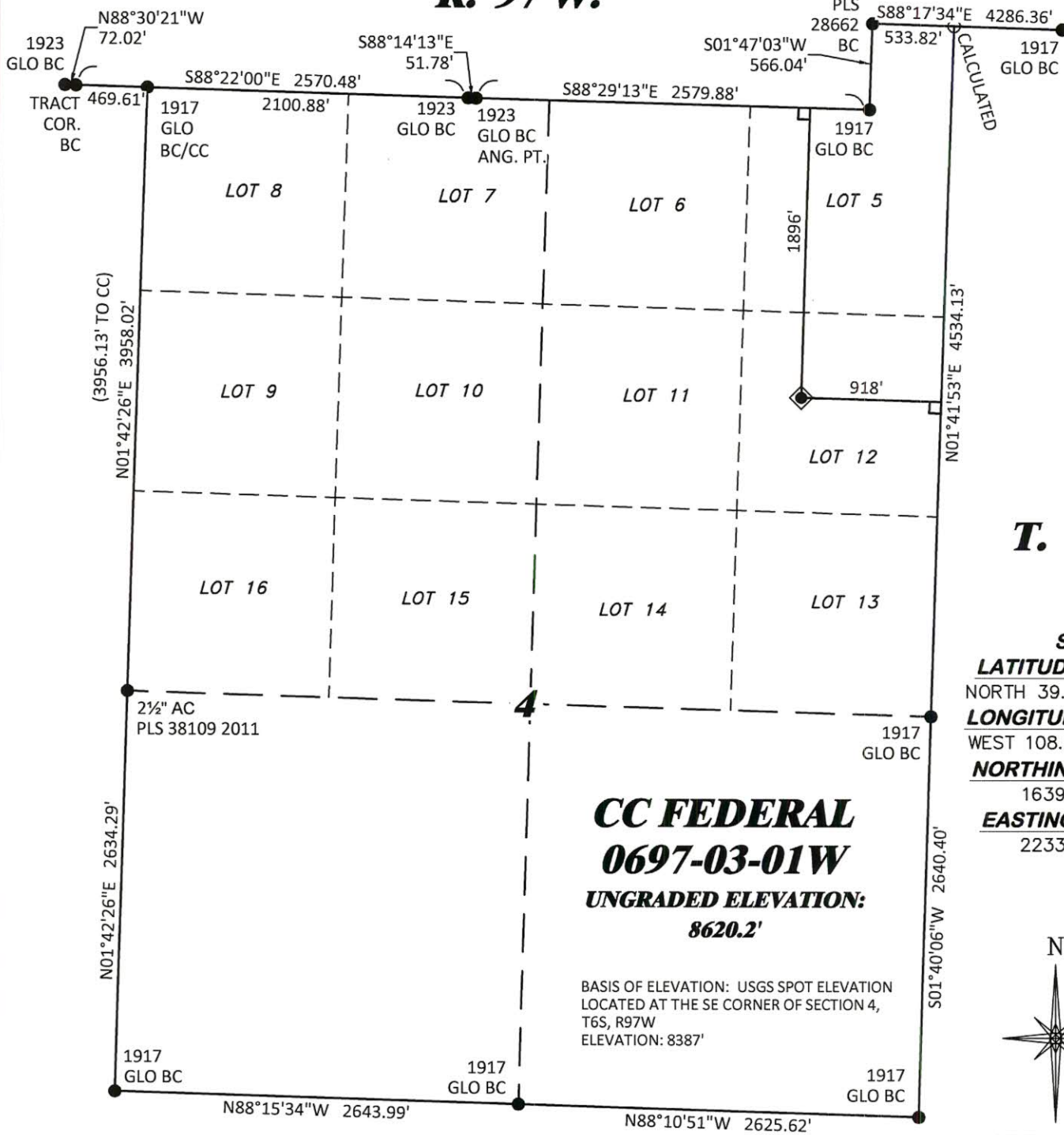


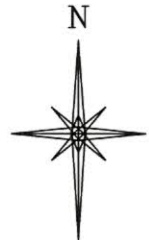
R. 97 W.



T. 6 S.

SHL

LATITUDE (NAD 83)
NORTH 39.557621 DEG.
LONGITUDE (NAD 83)
WEST 108.218736 DEG.
NORTHING (NAD 83)
1639461.25
EASTING (NAD 83)
2233557.53



GRID NORTH
SCALE' 1" = 1000'
500' 0 1000'

NOTES

- GPS OPERATOR T. SHERRILL OBSERVED A PDOP OF 1.3.
- ALL GPS OBSERVATIONS ARE IN COMPLIANCE WITH COGCC RULE No.215.
- NO EXISTING IMPROVEMENTS WITHIN 500' OF LOCATION. SEE LOC. DRAWING.
- SURROUNDING SURFACE USE IS NATIVE BRUSH, NON CROP RANGELAND.

LEGEND

- ◆ WELL LOCATION
- └ DENOTES 90° TIE
- FOUND MONUMENT
- CALCULATED

BASIS OF BEARING/DATUM

SPCS COLORADO CENTRAL NAD 27 BASED ON GPS OBSERVATIONS AND OPUS SOLUTION ON DRG CONTROL POINT "WILLIAMS" HAVING A POSITION OF: NAD83(2011)
LAT 39° 31' 35.18" NORTH
LONG 108° 12' 16.79" WEST
NAVD88 ELEVATION: 8618.14'

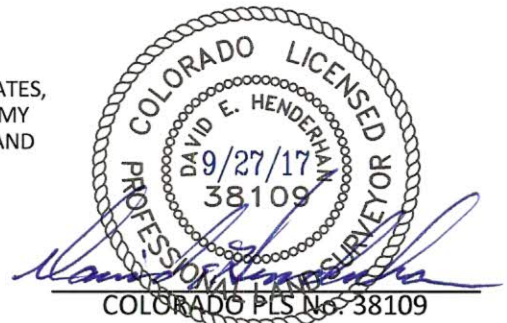
THE EAST LINE OF THE SE¼ OF SECTION 4, MONUMENTED BY BLM BC'S AND BEARING S 01°40'06" W.

SURVEYOR'S STATEMENT

I, DAVID E. HENDERHAN, AN EMPLOYEE AND AGENT ON BEHALF OF D.R. GRIFFIN & ASSOCIATES, INC. STATE THE PLAT HEREON IS A CORRECT REPRESENTATION OF A SURVEY MADE UNDER MY SUPERVISION ON THE 15th DAY OF JUNE, 2017 OF THE SHOWN CC FEDERAL 0697-03-01W AND THAT THE LOCATION HAS BEEN STAKED ON THE GROUND AS SHOWN ON THIS PLAT.

Notice: In accordance with Colorado State Law, any legal action based upon any defect in this survey plat must commence within three (3) years after first discovery of such defect. In no event, may any action based upon any defect in this survey plat be commenced more than ten (10) years from the date of certification shown hereon.

CC 604 41-32 PAD

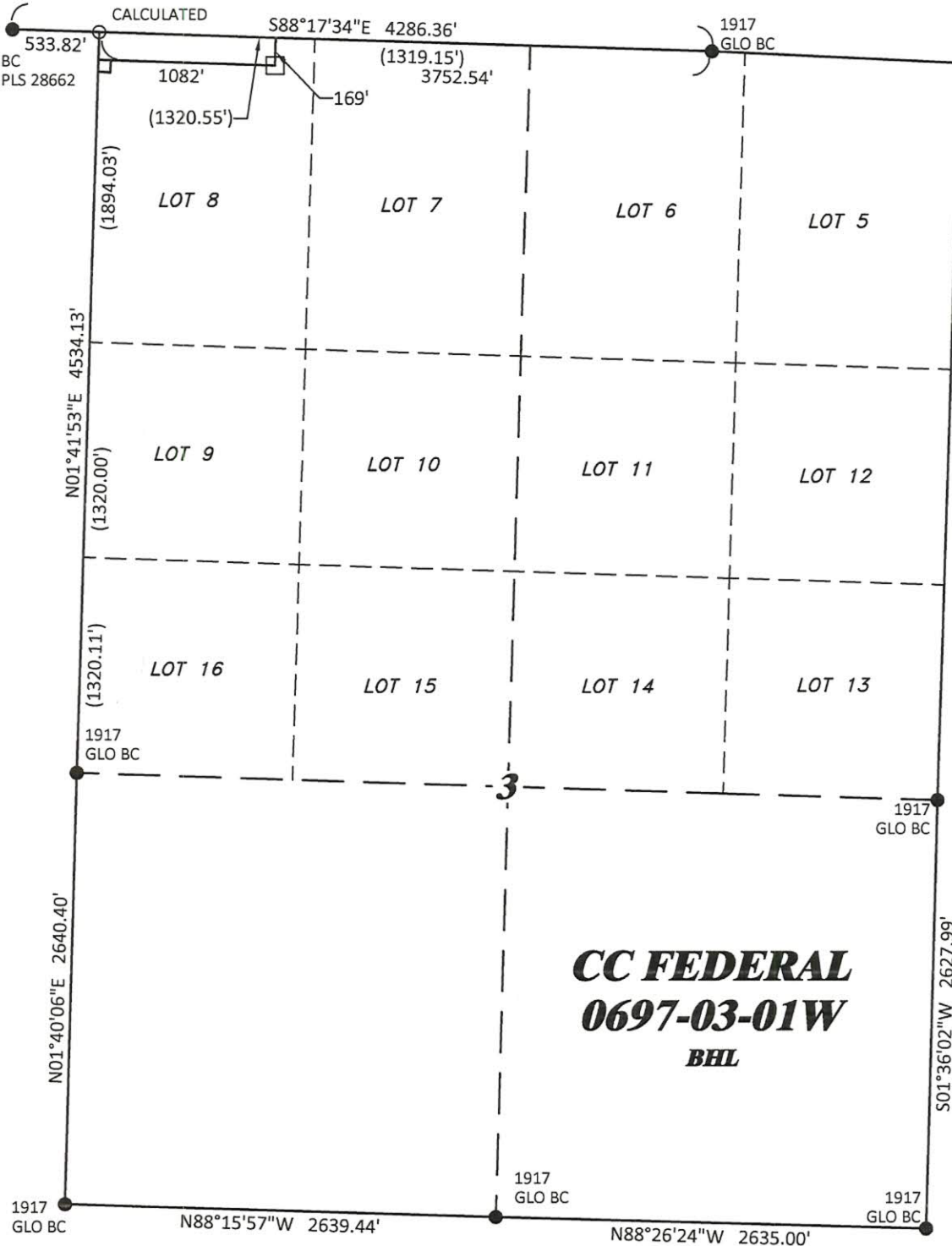


DRG RIFFIN & ASSOCIATES, INC. (307) 362-5028 1414 ELK ST., ROCK SPRINGS, WY 82901	
DRAWN: 9/20/2017 - TCM	SCALE: 1" = 1000'
REVISED: N/A -	DRG JOB No. 21347
	B12-03-01W

**PLAT OF DRILLING LOCATION IN
LOT 12, SECTION 4, FOR
LARAMIE ENERGY LLC**

**1896' F/NL, & 918' F/EL, SECTION 4,
T. 6 S., R. 97 W., 6TH P.M.,
GARFIELD COUNTY, COLORADO**

R. 97 W.



T. 6 S.

BHL/TOG
LATITUDE (NAD 83)
NORTH 39.563919 DEG.
LONGITUDE (NAD 83)
WEST 108.211646 DEG.
NORTHING (NAD 83)
1641695
EASTING (NAD 83)
2235624

CC FEDERAL
0697-03-01W
BHL

BASIS OF BEARING/DATUM

SPCS COLORADO CENTRAL NAD 27 BASED ON GPS
OBSERVATIONS AND OPUS SOLUTION ON DRG
CONTROL POINT "WILLIAMS" HAVING A POSITION OF:
NAD83(2011)
LAT 39° 31' 35.18" NORTH
LONG 108° 12' 16.79" WEST
NAVD88 ELEVATION: 8618.14'

THE EAST LINE OF THE SE¼ OF SECTION 4,
MONUMENTED BY BLM BC'S AND BEARING
S 01°40'06" W.

LEGEND

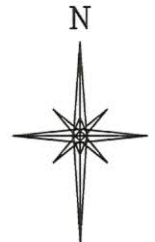
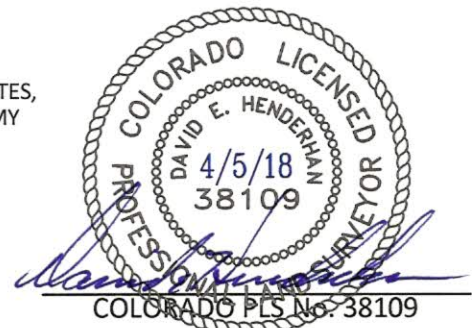
- APPROX. BHL
- └ DENOTES 90° TIE
- FOUND MONUMENT
- CALCULATED

SURVEYOR'S STATEMENT

I, DAVID E. HENDERHAN, AN EMPLOYEE AND AGENT ON BEHALF OF D.R. GRIFFIN & ASSOCIATES, INC. STATE THE PLAT HEREON IS A CORRECT REPRESENTATION OF A SURVEY MADE UNDER MY SUPERVISION ON THE 15th DAY OF JUNE, 2017 OF THE SHOWN CC FEDERAL 0697-03-01W BOTTOM HOLE.

Notice: In accordance with Colorado State Law, any legal action based upon any defect in this survey plat must commence within three (3) years after first discovery of such defect. In no event, may any action based upon any defect in this survey plat be commenced more than ten (10) years from the date of certification shown hereon.

CC 604 41-32 PAD



GRID NORTH
SCALE' 1" = 1000'
500' 0 1000'

DRG RIFFIN & ASSOCIATES, INC.
(307) 362-5028 1414 ELK ST., ROCK SPRINGS, WY 82901

DRAWN: 9/20/2017 - TCM

SCALE: 1" = 1000'

REVISED: 4/5/2018 - TCM

DRG JOB No. 21347

MOVED BHL

B12-03-01W BHL

**PLAT OF BOTTOM HOLE LOCATION IN
LOT 7, SECTION 3, FOR
LARAMIE ENERGY LLC**

**169' F/NL, & 1082' F/WL, SECTION 3,
T. 6 S., R. 97 W., 6TH P.M.,
GARFIELD COUNTY, COLORADO**