

WELLBORE CONTINUES  
INTO SECTION 23

T12N, R65W

MATCH LINE  
SEE SHEET 2

NW. COR.  
SEC. 26, T12N, R65W  
FOUND 3 1/4" ALUM. CAP  
L.S. NO. 38305

NE. COR.  
SEC. 26, T12N, R65W  
FOUND 2 1/2" ALUM. CAP  
L.S. NO. 9911

SURFACE LOCATION: NAD 83  
GROUND ELEVATION= 5903.1'  
LATITUDE= 40.969758°  
LONGITUDE= -104.629833°  
LATITUDE= 40°58'11.130"  
LONGITUDE= -104°37'47.400"  
HEEL LOCATION: NAD 83  
LATITUDE= 40.972485°  
LONGITUDE= -104.630760°  
LATITUDE= 40°58'20.945"  
LONGITUDE= -104°37'50.736"  
BOTTOM HOLE LOCATION: NAD 83  
LATITUDE= 40.999846°  
LONGITUDE= -104.630718°  
LATITUDE= 40°59'59.446"  
LONGITUDE= -104°37'50.584"

SURFACE LOCATION: NAD 27  
LATITUDE= 40.969776°  
LONGITUDE= -104.629314°  
LATITUDE= 40°58'11.194"  
LONGITUDE= -104°37'45.530"  
HEEL LOCATION: NAD 27  
LATITUDE= 40.972502°  
LONGITUDE= -104.630241°  
LATITUDE= 40°58'21.009"  
LONGITUDE= -104°37'48.866"  
BOTTOM HOLE LOCATION: NAD 27  
LATITUDE= 40.999864°  
LONGITUDE= -104.630198°  
LATITUDE= 40°59'59.509"  
LONGITUDE= -104°37'48.714"

26

N 00°05'47" W  
2617.84' (C)

S 87°05'09" W  
2639.40' (C)

S 87°05'09" W  
2639.40' (C)

N 00°01'52" E  
5254.31' (M)

N 00°13'29" W  
5217.05' (M)

N 00°29'41" W 9969' GRID  
N 00°04'03" E TRUE  
N 08°21'41" W MAGNETIC

HEEL  
LOCATION

2095'

RESOLUTION FED  
12-65-26-23-3NH  
SURFACE LOCATION

SW. COR.  
SEC. 26, T12N, R65W  
FOUND 3 1/4" ALUM. CAP  
L.S. NO. 38305

N 02°57'42" W  
2537.91' (M)

W. 1/4 COR.  
SEC. 35, T12N, R65W  
FOUND 3 1/4" ALUM. CAP  
L.S. NO. 38305

2340'

35

S 87°16'56" W 5266.23' (M)

SE. COR.  
SEC. 26, T12N, R65W  
FOUND 2 1/2" ALUM. CAP  
L.S. NO. 37070

N 00°38'49" W  
5254.80' (M)

SE. COR.  
SEC. 35, T12N, R65W  
FOUND 2 1/2" ALUM. CAP  
L.S. NO. 9911

#### CERTIFICATE OF SURVEYOR:

THIS IS TO CERTIFY THAT THE ABOVE PLAT WAS PREPARED FROM FIELD NOTES OF ACTUAL SURVEY MADE BY ME OR UNDER MY SUPERVISION AND TO THE BEST OF MY KNOWLEDGE AND BELIEF. THIS CERTIFICATE DOES NOT REPRESENT A LAND SURVEY PLAT OR IMPROVEMENT SURVEY PLAT AS DEFINED BY C.R.S. 2011-202 AND CANNOT BE RELIED UPON TO DETERMINE OWNERSHIP.

*Randall K. French*  
PROFESSIONAL LAND SURVEYOR  
38512  
1/15/18  
RANDALL K. FRENCH  
PROFESSIONAL LAND SURVEYOR  
COLORADO REGISTRATION NUMBER 38512

NOTE:  
ACCORDING TO COLORADO STATE LAW YOU MAY TAKE ANY LEGAL ACTION BASED UPON ANY DEFECT IN THIS SURVEY WITHIN THREE YEARS AFTER YOU FIRST DISCOVER SUCH DEFECT. IN NO EVENT MAY ANY ACTION BASED UPON ANY DEFECT IN THIS SURVEY BE COMMENCED MORE THAN TEN YEARS FROM THE DATE ON THE CERTIFICATION SHOWN HEREON.

NOTE:  
MAGNETIC NORTH IS CURRENT AS OF 3/5/2015.  
MAGNETIC NORTH CHANGES WEST 0°06' PER YEAR.  
0 1000' 2000'  
SCALE: 1" = 1000'

#### NOTES:

- ▲ INDICATES SECTION CORNER.
- INDICATES CALCULATED CORNER.
- INDICATES STATE LINE MONUMENT.
- ELEVATION BASED ON NAVD88 (GEOID09).
- BASIS OF BEARING DERIVED FROM COLORADO COORDINATE SYSTEM OF 1983 NORTH ZONE.
- ALL MEASURED DISTANCES ARE GRID.
- COMBINED SCALE FACTOR: .99975766 CALCULATED FROM THE NE. CORNER OF SECTION 35, T12N, R65W.
- OPERATOR: ROB WILSON / PDOP = 1.6.
- SEE ADDENDUM TO WELL LOCATION CERTIFICATE FOR EXISTING IMPROVEMENTS WITHIN 500' OF THE WELL PAD.
- WELL FOOTAGES ARE MEASURED AT RIGHT ANGLES TO THE SECTION LINES.
- THE BOTTOM OF HOLE BEARS N00°29'41"W, 9969' FROM THE HEEL LOCATION.

#### WELL PAD - RESOLUTION FED 12-65-26-23-3NH

RESOLUTION FED 12-65-26-23-3NH  
WELL LOCATION CERTIFICATE  
397' FNL & 2340' FWL NENW (SURFACE)  
LOCATED IN SECTION 35  
605' FSL & 2095' FWL SESW (HEEL)  
LOCATED IN SECTION 26  
118' FSL & 1960' FWL LOT 3 (SESW) (BOTTOM)  
LOCATED IN SECTION 14  
T12N, R65W, 6TH P.M.  
WELD COUNTY, COLORADO

Anadarko E&P  
Onshore LLC  
1099 18th Street  
Denver, Colorado 80202

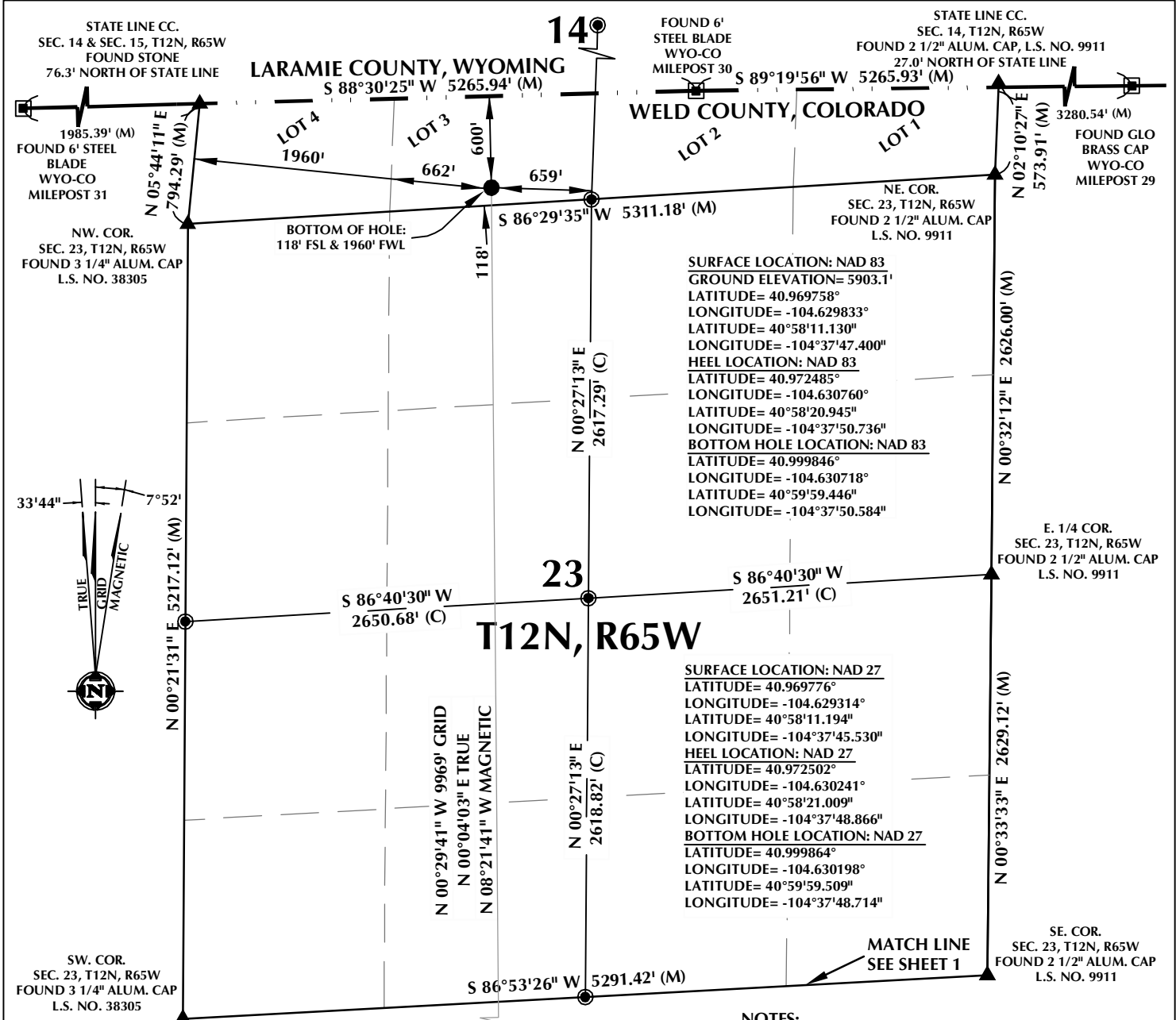


#### CONSULTING, LLC

SHERIDAN OFFICE  
1095 Saberton Avenue  
Sheridan, Wyoming 82801  
Phone 307-674-0609

LOVELAND OFFICE  
1635 Foxtrail Drive, Suite 204  
Loveland, Colorado 80538  
Phone 970-776-4331

DRAFTED BY:	MDB	CHECKED BY:	RKF	SHEET NO:
DATE DRAFTED:	3/10/15	DATE SURVEYED:	12/16/14	1
REVISED:	1/15/18	FILE NAME:	14-52	1 OF 2



DRAFTED BY: MDB	CHECKED BY: RKF	SHEET NO: <div style="font-size: 2em; font-weight: bold; text-align: center;">2</div> 2 OF 2
DATE DRAFTED: 3/10/15	DATE SURVEYED: 12/16/14	
REVISED: 1/15/18	FILE NAME: 14-52	