

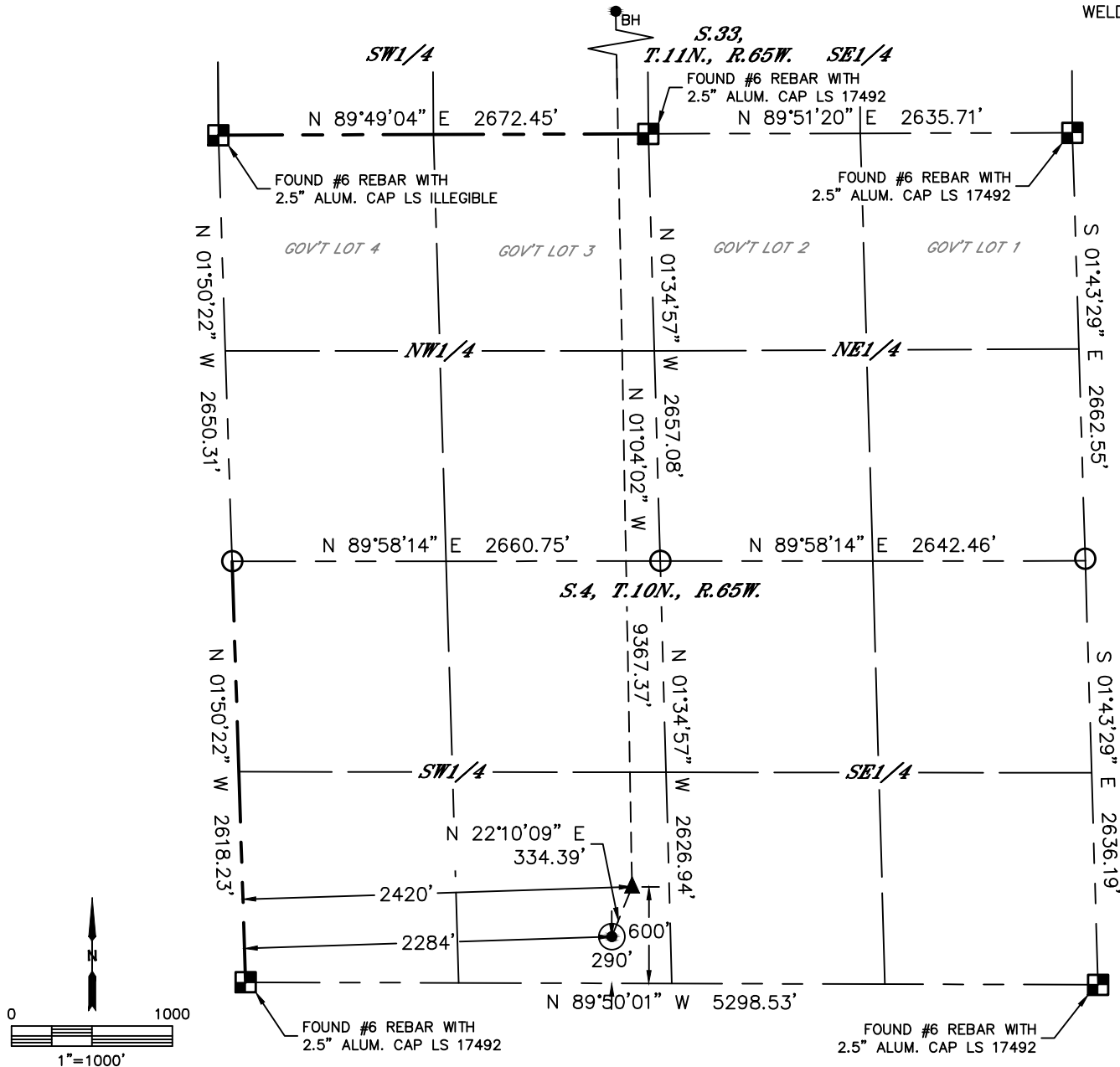


Lat40°, Inc. 6250 W. 10th Street, Unit 2, Greeley, CO 970-515-5294

# WELL LOCATION CERTIFICATE

DEPORTER 4-33-6H

SECTION: 4  
TOWNSHIP: 10N  
RANGE: 65W  
6TH. P.M.  
WELD COUNTY, CO



CLIENT: EDGE ENERGY						LANDMAN: ERIK LARSEN			
INSTRUMENT OPERATOR: SCOTT SHERARD						SURVEY DATE: 2/28/2018		SURFACE USE: RANGELAND	
SHL FOOTAGE			SHL LAT °		SHL LONG °	SHL PDOP	SHL ELEV (FT.)	SHL 1/4/1/4	SHL S-T-R
290	FSL	2284	FWL	40.85628	-104.66872	2.2	5396	SESW	4-10-65

BHL FOOTAGE				BHL LAT °	BHL LONG °	BHL S-T-R	EP LAT °	EP LONG °	EP S-T-R
600	FNL	2420	FWL	40.88282	-104.66857	33-11-65	40.85712	-104.66825	4-10-65

## LEGEND

- = ALIQUOT MONUMENT AS DESCRIBED
- = CALCULATED POSITION
- = SURFACE HOLE LOCATION (SHL)
- ▲ = ENTRY POINT LOCATION (EP)
- <sub>BH</sub> = BOTTOM HOLE LOCATION (BHL)
- ⊙ = EXISTING WELL
- ⊙ = ABANDONED WELL

## NOTE:

- 1) Bearings shown are Grid Bearings of the Colorado State Plane Coordinate System, North Zone, North American Datum 1983. The lineal dimensions as contained herein are based upon the "U.S. Survey Foot."
- 2) Distances to section lines measured at 90 degrees from said section lines.
- 3) Ground elevations are based on an observed GPS elevation (NAVD 1988 DATUM).
- 4) Latitude and Longitude shown are (NAD 83 DATUM).
- 5) IMPROVEMENTS: See LOCATION DRAWING for all visible improvements within 500' of oil and gas location.
- 6) This map does not represent a boundary survey.



SHEET 1 OF 2

Kyle E. Rutz—On behalf of Lat40°, Inc.  
Colorado Licensed Professional Land Surveyor No. 38307  
DATE: 3/23/2018  
PROJECT#: 2018029

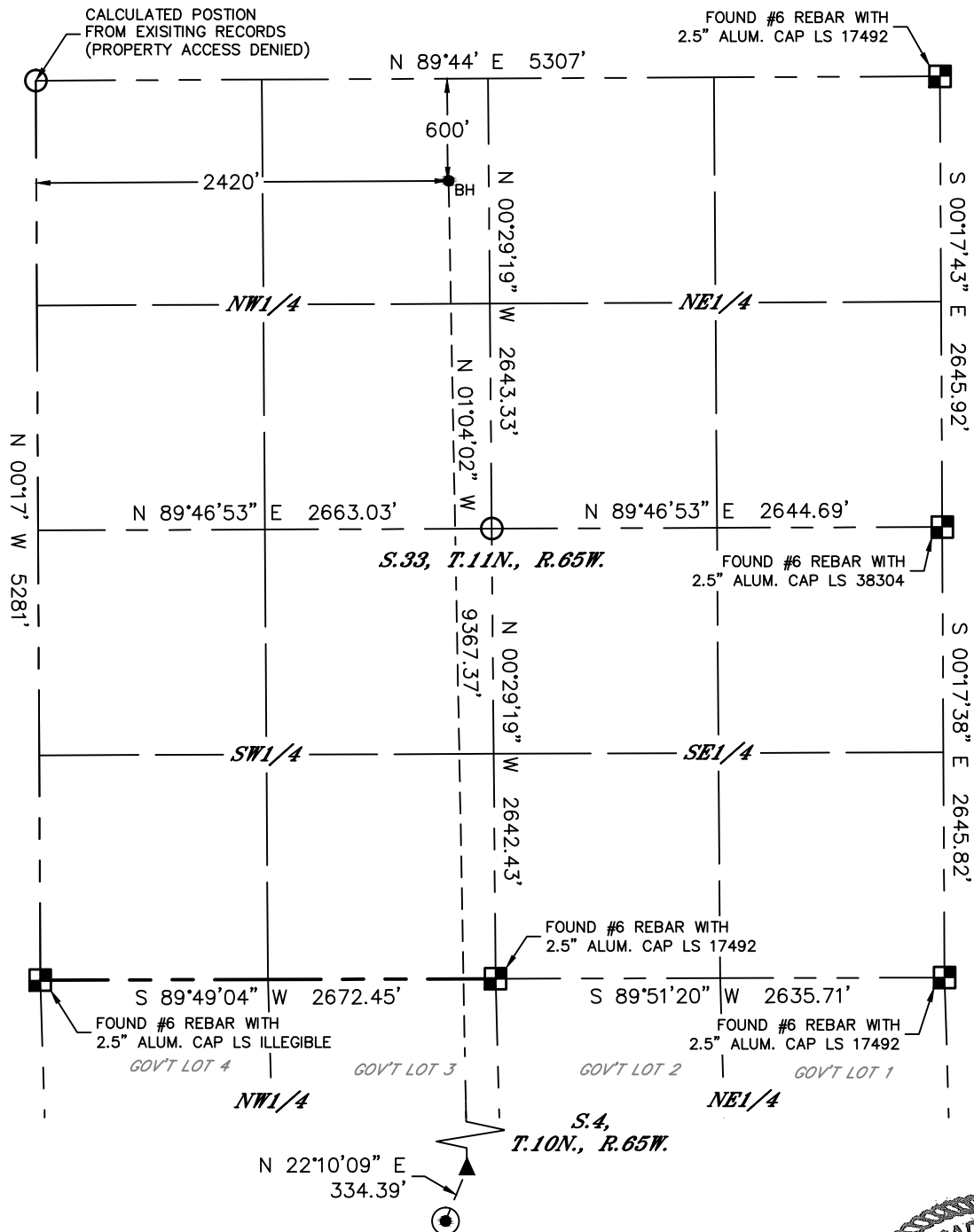


Lat40°, Inc. 6250 W. 10th Street, Unit 2, Greeley, CO 970-515-5294

# WELL LOCATION CERTIFICATE

DEPORTER 4-33-6H

SECTION: 4  
TOWNSHIP: 10N  
RANGE: 65W  
6TH. P.M.  
WELD COUNTY, CO



## LEGEND

- = ALIQUOT MONUMENT AS DESCRIBED
- = CALCULATED POSITION
- = SURFACE HOLE LOCATION (SHL)
- ▲ = ENTRY POINT LOCATION (EP)
- <sub>BH</sub> = BOTTOM HOLE LOCATION (BHL)
- ⊙ = EXISTING WELL
- ⊙ = ABANDONED WELL



SHEET 2 OF 2

Kyle E. Rutz—On behalf of Lat40°, Inc.  
Colorado Licensed Professional Land Surveyor No. 38307  
DATE: 3/23/2018  
PROJECT#: 2018029