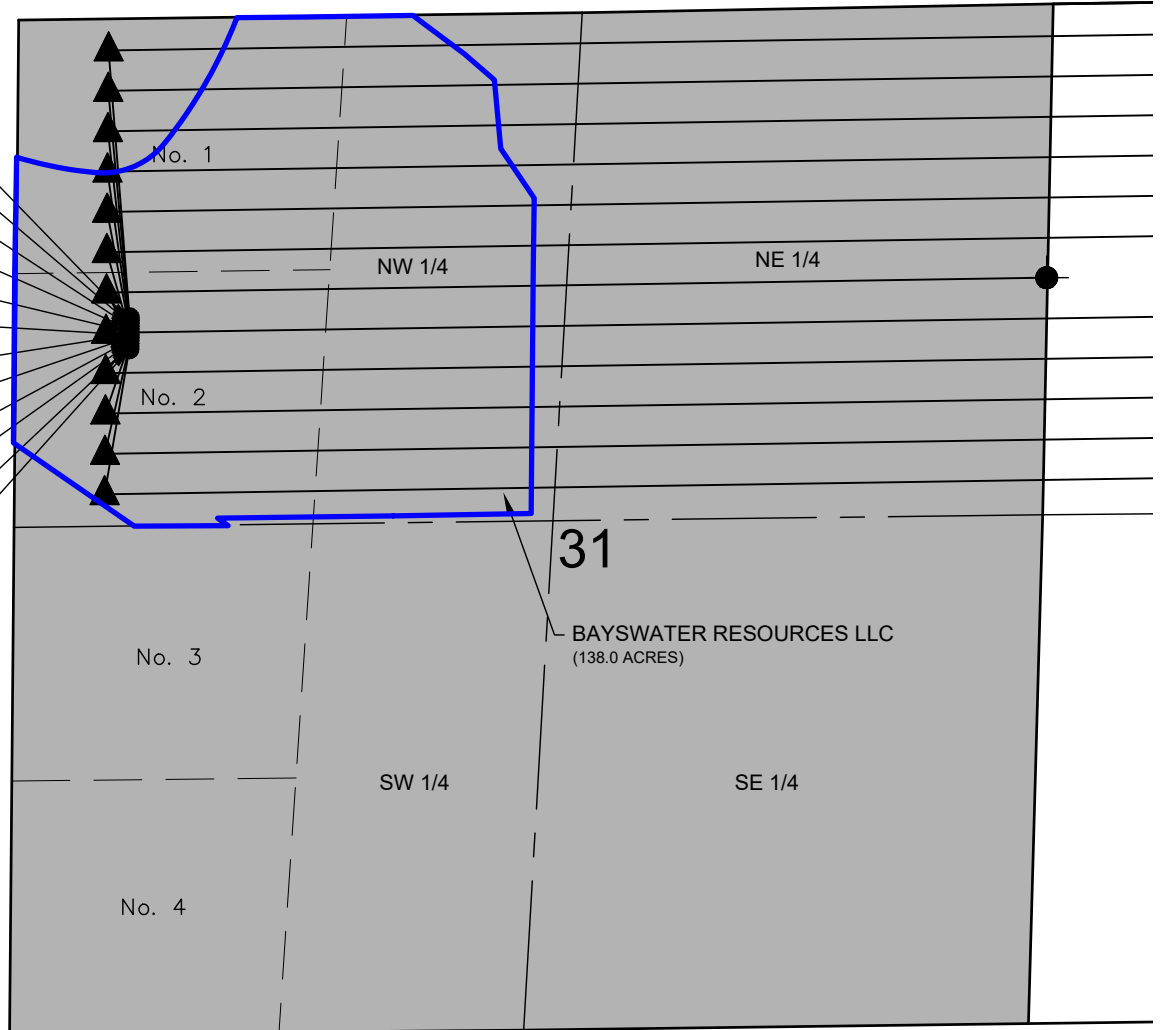


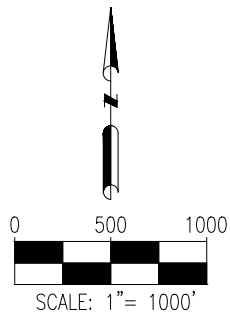
HESTER FARMS II 31-H PAD LEASE DRAWING

HESTER FARMS II A-31-32HN
HESTER FARMS II B-31-32HN
HESTER FARMS II C-31-32HN
HESTER FARMS II D-31-32HC
HESTER FARMS II E-31-32HN
HESTER FARMS II F-31-32HN
HESTER FARMS II G-31-32HN
HESTER FARMS II H-31-32HC
HESTER FARMS II I-31-32HN
HESTER FARMS II J-31-32HN
HESTER FARMS II K-31-32HN
HESTER FARMS II L-31-32HC



NOTES:

HESTER FARMS II A-31-32HN TO BE AT 1557' FNL & 591' FWL.
BOTTOM HOLE AT 165' FNL & 470' FEL, SEC. 32.
HESTER FARMS II B-31-32HN TO BE AT 1572' FNL & 591' FWL.
BOTTOM HOLE AT 375' FNL & 470' FEL, SEC. 32.
HESTER FARMS II C-31-32HN TO BE AT 1587' FNL & 591' FWL.
BOTTOM HOLE AT 585' FNL & 470' FEL, SEC. 32.
HESTER FARMS II D-31-32HC TO BE AT 1602' FNL & 591' FWL.
BOTTOM HOLE AT 795' FNL & 470' FEL, SEC. 32.
HESTER FARMS II E-31-32HN TO BE AT 1617' FNL & 591' FWL.
BOTTOM HOLE AT 1005' FNL & 470' FEL, SEC. 32.
HESTER FARMS II F-31-32HN TO BE AT 1632' FNL & 591' FWL.
BOTTOM HOLE AT 1215' FNL & 470' FEL, SEC. 32.
HESTER FARMS II G-31-32HN TO BE AT 1647' FNL & 591' FWL.
BOTTOM HOLE AT 1425' FNL & 5' FEL, SEC. 31.
HESTER FARMS II H-31-32HC TO BE AT 1662' FNL & 591' FWL.
BOTTOM HOLE AT 1635' FNL & 470' FEL, SEC. 32.
HESTER FARMS II I-31-32HN TO BE AT 1677' FNL & 591' FWL.
BOTTOM HOLE AT 1845' FNL & 470' FEL, SEC. 32.
HESTER FARMS II J-31-32HN TO BE AT 1692' FNL & 591' FWL.
BOTTOM HOLE AT 2055' FNL & 470' FEL, SEC. 32.
HESTER FARMS II K-31-32HN TO BE AT 1707' FNL & 591' FWL.
BOTTOM HOLE AT 2265' FNL & 470' FEL, SEC. 32.
HESTER FARMS II L-31-32HC TO BE AT 1722' FNL & 591' FWL.
BOTTOM HOLE AT 2475' FNL & 470' FEL, SEC. 32.



LEGEND

- = PROPOSED WELL
- ▲ = LANDING POINT
- ⬤ = BOTTOM HOLE
- = LEASE LINES

DISCLAIMER:
THIS PLOT DOES NOT REPRESENT A MONUMENTED LAND SURVEY AND SHOULD NOT BE
RELIED UPON TO DETERMINE BOUNDARY LINES, PROPERTY OWNERSHIP OR OTHER
PROPERTY INTERESTS. PARCEL LINES, IF DEPICTED HAVE NOT BEEN FIELD VERIFIED AND
MAY BE BASED UPON PUBLICLY AVAILABLE DATA THAT ALSO HAS NOT BEEN
INDEPENDENTLY VERIFIED.



7535 Hilltop Circle
Denver, CO 80221
(303) 928-7128
www.ascentgeomatics.com

FIELD DATE:
06-01-17

DRAWING DATE:
01-05-18

BY:
RMC

CHECKED:
IJM

SITE NAME:
HESTER FARMS II 31-H PAD

SURFACE LOCATION:

LOT 2 NW 1/4 SEC. 31, T7N, R66W, 6TH P.M.
WELD COUNTY, COLORADO

PREPARED FOR:

