

BAYSWATER E & P, LLC

Location	Weld County, CO	Slot	Hester Farms II L-31-32HC
Field	WATTENBERG	Well	W Hester Farms II L-31-32HC
Installation	Hester Farms II Pad	Wellbore	W Hester Farms II L-31-32HC (PWB)

East (Feet) ->

N

GRID

-3200 -1600 0 1600 3200 4800 6400 8000 9600 11200
Scale 1 cm = 800 ft

Surface 0.00 N 0.00 E

Hester Farms II L-31-32HC - BH

Hester Farms II L-31-32HC - EP

1600
0
-1600
-3200
Scale 1 cm = 800 ft
North (Feet)

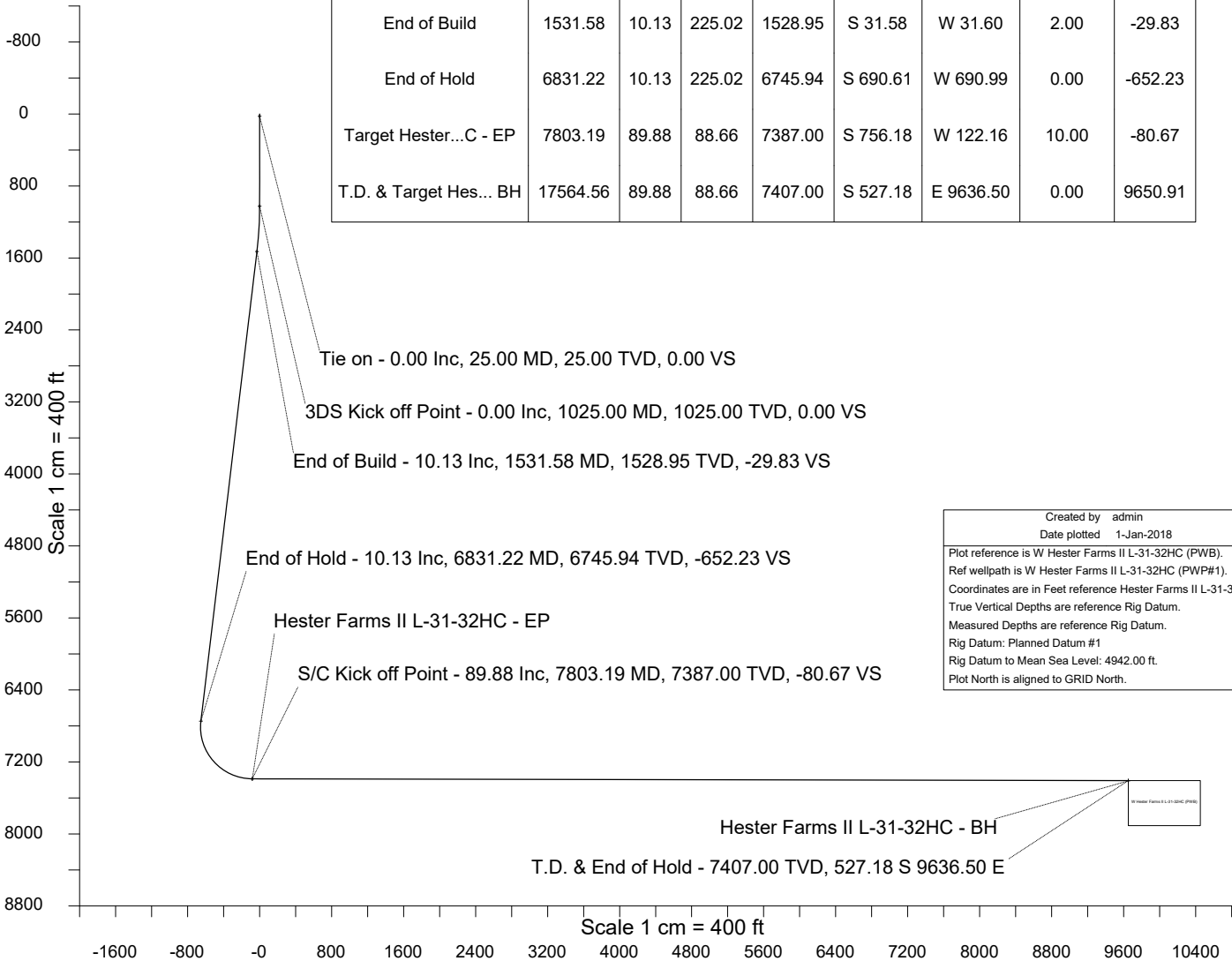
WELL PROFILE DATA

Point	MD	Inc	Azi	TVD	North	East	deg/100ft	V. Sect
Tie on	25.00	0.00	0.00	25.00	S 0.00	W 0.00		0.00
KOP	1025.00	0.00	225.02	1025.00	S 0.00	W 0.00	0.00	0.00
End of Build	1531.58	10.13	225.02	1528.95	S 31.58	W 31.60	2.00	-29.83
End of Hold	6831.22	10.13	225.02	6745.94	S 690.61	W 690.99	0.00	-652.23
Target Hester...C - EP	7803.19	89.88	88.66	7387.00	S 756.18	W 122.16	10.00	-80.67
T.D. & Target Hes... BH	17564.56	89.88	88.66	7407.00	S 527.18	E 9636.50	0.00	9650.91

Dec-20-2017

EMMA-2015 [2000.0-2020.0] Dip: 66.96 deg Field: 53420.0 nT
Lat: N40 32 1.4136 Long: W104 49 47.9172 Elev: 4917.00 ft
Magnetic North is 8.24 deg East of True North
GRID North is 0.43 deg East of True North
To correct azimuth from True to GRID subtract 0.43 deg
To correct azimuth from Magnetic to GRID add 7.81 deg

<- True Vertical Depth (Feet)



Created by admin
Date plotted 1-Jan-2018
Plot reference is W Hester Farms II L-31-32HC (PWB).
Ref wellpath is W Hester Farms II L-31-32HC (PWP#1).
Coordinates are in Feet reference Hester Farms II L-31-32HC.
True Vertical Depths are reference Rig Datum.
Measured Depths are reference Rig Datum.
Rig Datum: Planned Datum #1
Rig Datum to Mean Sea Level: 4942.00 ft.
Plot North is aligned to GRID North.

Azimuth 93.13 with reference 0.00 N, 0.00 E from Hester Farms II L-31-32HC



SYSDRILL
Well Design Combined Report
Wellbore: W Hester Farms II L-31-32HC (PWB)



Wellhead Details

Name	Latitude	Longitude	Northing	Easting	North	East	Slot Elevation Above Ground
Hester Farms II L-31-32HC	40.53327300	-104.82998100	1437815.6853	3186238.6062	165.04S	0.14E	0.00

Declination

Date	Source	Time
Dec-20-2017	EMM-2015 [2000.0-2020.0]	11:12

Installation Details

Name	Installation Position (Latitude)	Installation Position (Longitude)	Northing	Easting	Coord System Name	North Alignment
Hester Farms II Pad	40.53372600	-104.82997700	1437980.7208	3186238.4710	CO83-NF on NORTH AMERICAN DATUM 1983 datum	Grid

Summary Wellpath

MD[ft]	Inc[deg]	Azi[deg]	TVD[ft]	North[ft]	East[ft]	Dogleg [deg/100ft]	Vertical Section[ft]	Northing	Easting
25.00	0.00	0.000	25.00	0.00N	0.00E		0.00	1437815.69	3186238.61
1025.00	0.00	225.020	1025.00	0.00N	0.00E	==>	0.00	1437815.69	3186238.61
1531.58	10.13	225.020	1528.95	31.58S	31.60W	2.00	-29.83	1437784.11	3186207.01
6831.22	10.13	225.020	6745.94	690.61S	690.99W	==>	-652.23	1437125.10	3185547.64
7803.19	89.88	88.660	7387.00	756.18S	122.16W	10.00	-80.67	1437059.53	3186116.45
17564.56	89.88	88.660	7407.00	527.18S	9636.50E	==>	9650.91	1437288.52	3195874.79

Interpolated Wellpath

MD[ft]	Inc[deg]	Azi[deg]	TVD[ft]	North[ft]	East[ft]	Dogleg [deg/100ft]	Vertical Section[ft]	All Station Comments
0.00	0.00	0.000	0.00	0.00N	0.00E		0.00	Rig Datum
25.00	0.00	0.000	25.00	0.00N	0.00E	==>	0.00	Slot Datum
100.00	0.00	0.000	100.00	0.00N	0.00E	==>	0.00	
200.00	0.00	0.000	200.00	0.00N	0.00E	==>	0.00	
300.00	0.00	0.000	300.00	0.00N	0.00E	==>	0.00	
400.00	0.00	0.000	400.00	0.00N	0.00E	==>	0.00	
500.00	0.00	0.000	500.00	0.00N	0.00E	==>	0.00	
600.00	0.00	0.000	600.00	0.00N	0.00E	==>	0.00	
700.00	0.00	0.000	700.00	0.00N	0.00E	==>	0.00	
800.00	0.00	0.000	800.00	0.00N	0.00E	==>	0.00	
900.00	0.00	0.000	900.00	0.00N	0.00E	==>	0.00	
1000.00	0.00	0.000	1000.00	0.00N	0.00E	==>	0.00	
1100.00	1.50	225.020	1099.99	0.69S	0.69W	2.00	-0.66	
1200.00	3.50	225.020	1199.89	3.78S	3.78W	2.00	-3.57	
1300.00	5.50	225.020	1299.58	9.32S	9.33W	2.00	-8.81	
1400.00	7.50	225.020	1398.93	17.33S	17.33W	2.00	-16.36	
1500.00	9.50	225.020	1497.83	27.77S	27.79W	2.00	-26.23	
1600.00	10.13	225.020	1596.30	40.09S	40.11W	==>	-37.86	
1700.00	10.13	225.020	1694.74	52.52S	52.55W	==>	-49.60	
1800.00	10.13	225.020	1793.18	64.96S	64.99W	==>	-61.35	
1900.00	10.13	225.020	1891.62	77.39S	77.44W	==>	-73.09	
2000.00	10.13	225.020	1990.06	89.83S	89.88W	==>	-84.84	
2100.00	10.13	225.020	2088.50	102.27S	102.32W	==>	-96.58	
2200.00	10.13	225.020	2186.94	114.70S	114.76W	==>	-108.33	
2300.00	10.13	225.020	2285.38	127.14S	127.20W	==>	-120.07	
2400.00	10.13	225.020	2383.82	139.57S	139.65W	==>	-131.81	
2500.00	10.13	225.020	2482.26	152.01S	152.09W	==>	-143.56	
2600.00	10.13	225.020	2580.70	164.44S	164.53W	==>	-155.30	
2700.00	10.13	225.020	2679.14	176.88S	176.97W	==>	-167.05	
2800.00	10.13	225.020	2777.58	189.31S	189.42W	==>	-178.79	
2900.00	10.13	225.020	2876.03	201.75S	201.86W	==>	-190.54	
3000.00	10.13	225.020	2974.47	214.18S	214.30W	==>	-202.28	

All data is in Feet unless otherwise stated
Coordinates are from Slot MD's are from Rig (Planned Datum #1 4942.0ft above Mean Sea Level)
Vertical Section is from 0.00N 0.00E on azimuth 93.130 degrees
Bottom hole distance is 9650.91 Feet on azimuth 93.13 degrees from Wellhead
Calculation method uses Minimum Curvature method
Prepared by Microsoft
Date Printed: 1-Jan-2018



SYSDRILL
Well Design Combined Report
Wellbore: W Hester Farms II L-31-32HC (PWB)



Interpolated Wellpath								
MD[ft]	Inc[deg]	Azi[deg]	TVD[ft]	North[ft]	East[ft]	Dogleg [deg/100ft]	Vertical Section[ft]	All Station Comments
3100.00	10.13	225.020	3072.91	226.62S	226.74W	==>	-214.02	
3200.00	10.13	225.020	3171.35	239.06S	239.18W	==>	-225.77	
3300.00	10.13	225.020	3269.79	251.49S	251.63W	==>	-237.51	
3400.00	10.13	225.020	3368.23	263.93S	264.07W	==>	-249.26	
3500.00	10.13	225.020	3466.67	276.36S	276.51W	==>	-261.00	
3600.00	10.13	225.020	3565.11	288.80S	288.95W	==>	-272.75	
3700.00	10.13	225.020	3663.55	301.23S	301.40W	==>	-284.49	
3800.00	10.13	225.020	3761.99	313.67S	313.84W	==>	-296.23	
3900.00	10.13	225.020	3860.43	326.10S	326.28W	==>	-307.98	
4000.00	10.13	225.020	3958.87	338.54S	338.72W	==>	-319.72	
4100.00	10.13	225.020	4057.31	350.97S	351.16W	==>	-331.47	
4200.00	10.13	225.020	4155.75	363.41S	363.61W	==>	-343.21	
4300.00	10.13	225.020	4254.19	375.84S	376.05W	==>	-354.96	
4400.00	10.13	225.020	4352.63	388.28S	388.49W	==>	-366.70	
4500.00	10.13	225.020	4451.07	400.72S	400.93W	==>	-378.44	
4600.00	10.13	225.020	4549.52	413.15S	413.37W	==>	-390.19	
4700.00	10.13	225.020	4647.96	425.59S	425.82W	==>	-401.93	
4800.00	10.13	225.020	4746.40	438.02S	438.26W	==>	-413.68	
4900.00	10.13	225.020	4844.84	450.46S	450.70W	==>	-425.42	
5000.00	10.13	225.020	4943.28	462.89S	463.14W	==>	-437.17	
5100.00	10.13	225.020	5041.72	475.33S	475.59W	==>	-448.91	
5200.00	10.13	225.020	5140.16	487.76S	488.03W	==>	-460.66	
5300.00	10.13	225.020	5238.60	500.20S	500.47W	==>	-472.40	
5400.00	10.13	225.020	5337.04	512.63S	512.91W	==>	-484.14	
5500.00	10.13	225.020	5435.48	525.07S	525.35W	==>	-495.89	
5600.00	10.13	225.020	5533.92	537.51S	537.80W	==>	-507.63	
5700.00	10.13	225.020	5632.36	549.94S	550.24W	==>	-519.38	
5800.00	10.13	225.020	5730.80	562.38S	562.68W	==>	-531.12	
5900.00	10.13	225.020	5829.24	574.81S	575.12W	==>	-542.87	
6000.00	10.13	225.020	5927.68	587.25S	587.57W	==>	-554.61	
6100.00	10.13	225.020	6026.12	599.68S	600.01W	==>	-566.35	
6200.00	10.13	225.020	6124.56	612.12S	612.45W	==>	-578.10	
6300.00	10.13	225.020	6223.01	624.55S	624.89W	==>	-589.84	
6400.00	10.13	225.020	6321.45	636.99S	637.33W	==>	-601.59	
6500.00	10.13	225.020	6419.89	649.42S	649.78W	==>	-613.33	
6600.00	10.13	225.020	6518.33	661.86S	662.22W	==>	-625.08	
6700.00	10.13	225.020	6616.77	674.30S	674.66W	==>	-636.82	
6800.00	10.13	225.020	6715.21	686.73S	687.10W	==>	-648.56	
6900.00	7.04	182.210	6814.01	699.11S	695.43W	10.00	-656.21	
7000.00	11.85	124.630	6912.82	711.10S	687.20W	10.00	-647.33	
7100.00	20.74	107.640	7008.75	722.33S	661.82W	10.00	-621.37	
7200.00	30.31	100.820	7098.91	732.46S	620.05W	10.00	-579.11	
7300.00	40.08	97.070	7180.54	741.18S	563.17W	10.00	-521.84	
7400.00	49.93	94.590	7251.16	748.22S	492.90W	10.00	-451.29	
7500.00	59.82	92.750	7308.63	753.38S	411.38W	10.00	-369.62	
7600.00	69.72	91.250	7351.21	756.48S	321.09W	10.00	-279.29	
7700.00	79.64	89.930	7377.59	757.45S	224.77W	10.00	-183.06	
7800.00	89.57	88.690	7386.98	756.25S	125.35W	10.00	-83.85	
7900.00	89.88	88.660	7387.20	753.91S	25.38W	==>	15.84	
8000.00	89.88	88.660	7387.40	751.56S	74.59E	==>	115.54	
8100.00	89.88	88.660	7387.61	749.22S	174.57E	==>	215.23	
8200.00	89.88	88.660	7387.81	746.87S	274.54E	==>	314.93	
8300.00	89.88	88.660	7388.02	744.53S	374.51E	==>	414.62	
8400.00	89.88	88.660	7388.22	742.18S	474.48E	==>	514.32	
8500.00	89.88	88.660	7388.43	739.83S	574.45E	==>	614.01	
8600.00	89.88	88.660	7388.63	737.49S	674.43E	==>	713.70	
8700.00	89.88	88.660	7388.84	735.14S	774.40E	==>	813.40	
8800.00	89.88	88.660	7389.04	732.80S	874.37E	==>	913.09	
8900.00	89.88	88.660	7389.25	730.45S	974.34E	==>	1012.79	

All data is in Feet unless otherwise stated
Coordinates are from Slot MD's are from Rig (Planned Datum #1 4942.0ft above Mean Sea Level)
Vertical Section is from 0.00N 0.00E on azimuth 93.130 degrees
Bottom hole distance is 9650.91 Feet on azimuth 93.13 degrees from Wellhead
Calculation method uses Minimum Curvature method
Prepared by Microsoft
Date Printed: 1-Jan-2018



SYS DRILL
Well Design Combined Report
Wellbore: W Hester Farms II L-31-32HC (PWB)



Interpolated Wellpath								
MD[ft]	Inc[deg]	Azi[deg]	TVD[ft]	North[ft]	East[ft]	Dogleg [deg/100ft]	Vertical Section[ft]	All Station Comments
9000.00	89.88	88.660	7389.45	728.10S	1074.32E	==>	1112.48	
9100.00	89.88	88.660	7389.66	725.76S	1174.29E	==>	1212.18	
9200.00	89.88	88.660	7389.86	723.41S	1274.26E	==>	1311.87	
9300.00	89.88	88.660	7390.07	721.07S	1374.23E	==>	1411.57	
9400.00	89.88	88.660	7390.27	718.72S	1474.20E	==>	1511.26	
9500.00	89.88	88.660	7390.48	716.37S	1574.18E	==>	1610.96	
9600.00	89.88	88.660	7390.68	714.03S	1674.15E	==>	1710.65	
9700.00	89.88	88.660	7390.89	711.68S	1774.12E	==>	1810.35	
9800.00	89.88	88.660	7391.09	709.34S	1874.09E	==>	1910.04	
9900.00	89.88	88.660	7391.30	706.99S	1974.07E	==>	2009.74	
10000.00	89.88	88.660	7391.50	704.64S	2074.04E	==>	2109.43	
10100.00	89.88	88.660	7391.71	702.30S	2174.01E	==>	2209.13	
10200.00	89.88	88.660	7391.91	699.95S	2273.98E	==>	2308.82	
10300.00	89.88	88.660	7392.12	697.61S	2373.96E	==>	2408.52	
10400.00	89.88	88.660	7392.32	695.26S	2473.93E	==>	2508.21	
10500.00	89.88	88.660	7392.53	692.91S	2573.90E	==>	2607.91	
10600.00	89.88	88.660	7392.73	690.57S	2673.87E	==>	2707.60	
10700.00	89.88	88.660	7392.94	688.22S	2773.84E	==>	2807.30	
10800.00	89.88	88.660	7393.14	685.88S	2873.82E	==>	2906.99	
10900.00	89.88	88.660	7393.35	683.53S	2973.79E	==>	3006.69	
11000.00	89.88	88.660	7393.55	681.18S	3073.76E	==>	3106.38	
11100.00	89.88	88.660	7393.75	678.84S	3173.73E	==>	3206.08	
11200.00	89.88	88.660	7393.96	676.49S	3273.71E	==>	3305.77	
11300.00	89.88	88.660	7394.16	674.15S	3373.68E	==>	3405.47	
11400.00	89.88	88.660	7394.37	671.80S	3473.65E	==>	3505.16	
11500.00	89.88	88.660	7394.57	669.45S	3573.62E	==>	3604.86	
11600.00	89.88	88.660	7394.78	667.11S	3673.59E	==>	3704.55	
11700.00	89.88	88.660	7394.98	664.76S	3773.57E	==>	3804.25	
11800.00	89.88	88.660	7395.19	662.42S	3873.54E	==>	3903.94	
11900.00	89.88	88.660	7395.39	660.07S	3973.51E	==>	4003.63	
12000.00	89.88	88.660	7395.60	657.72S	4073.48E	==>	4103.33	
12100.00	89.88	88.660	7395.80	655.38S	4173.46E	==>	4203.02	
12200.00	89.88	88.660	7396.01	653.03S	4273.43E	==>	4302.72	
12300.00	89.88	88.660	7396.21	650.69S	4373.40E	==>	4402.41	
12400.00	89.88	88.660	7396.42	648.34S	4473.37E	==>	4502.11	
12500.00	89.88	88.660	7396.62	645.99S	4573.35E	==>	4601.80	
12600.00	89.88	88.660	7396.83	643.65S	4673.32E	==>	4701.50	
12700.00	89.88	88.660	7397.03	641.30S	4773.29E	==>	4801.19	
12800.00	89.88	88.660	7397.24	638.96S	4873.26E	==>	4900.89	
12900.00	89.88	88.660	7397.44	636.61S	4973.23E	==>	5000.58	
13000.00	89.88	88.660	7397.65	634.26S	5073.21E	==>	5100.28	
13100.00	89.88	88.660	7397.85	631.92S	5173.18E	==>	5199.97	
13200.00	89.88	88.660	7398.06	629.57S	5273.15E	==>	5299.67	
13300.00	89.88	88.660	7398.26	627.23S	5373.12E	==>	5399.36	
13400.00	89.88	88.660	7398.47	624.88S	5473.10E	==>	5499.06	
13500.00	89.88	88.660	7398.67	622.53S	5573.07E	==>	5598.75	
13600.00	89.88	88.660	7398.88	620.19S	5673.04E	==>	5698.45	
13700.00	89.88	88.660	7399.08	617.84S	5773.01E	==>	5798.14	
13800.00	89.88	88.660	7399.29	615.50S	5872.98E	==>	5897.84	
13900.00	89.88	88.660	7399.49	613.15S	5972.96E	==>	5997.53	
14000.00	89.88	88.660	7399.70	610.80S	6072.93E	==>	6097.23	
14100.00	89.88	88.660	7399.90	608.46S	6172.90E	==>	6196.92	
14200.00	89.88	88.660	7400.11	606.11S	6272.87E	==>	6296.62	
14300.00	89.88	88.660	7400.31	603.77S	6372.85E	==>	6396.31	
14400.00	89.88	88.660	7400.52	601.42S	6472.82E	==>	6496.01	
14500.00	89.88	88.660	7400.72	599.07S	6572.79E	==>	6595.70	
14600.00	89.88	88.660	7400.93	596.73S	6672.76E	==>	6695.40	
14700.00	89.88	88.660	7401.13	594.38S	6772.73E	==>	6795.09	
14800.00	89.88	88.660	7401.34	592.04S	6872.71E	==>	6894.79	

All data is in Feet unless otherwise stated
Coordinates are from Slot MD's are from Rig and TVD's are from Rig (Planned Datum #1 4942.0ft above Mean Sea Level)
Vertical Section is from 0.00N 0.00E on azimuth 93.130 degrees
Bottom hole distance is 9650.91 Feet on azimuth 93.13 degrees from Wellhead
Calculation method uses Minimum Curvature method
Prepared by Microsoft
Date Printed: 1-Jan-2018



SYSDRILL
Well Design Combined Report
Wellbore: W Hester Farms II L-31-32HC (PWB)



Interpolated Wellpath								
MD[ft]	Inc[deg]	Azi[deg]	TVD[ft]	North[ft]	East[ft]	Dogleg [deg/100ft]	Vertical Section[ft]	All Station Comments
14900.00	89.88	88.660	7401.54	589.69S	6972.68E	==>	6994.48	
15000.00	89.88	88.660	7401.75	587.34S	7072.65E	==>	7094.18	
15100.00	89.88	88.660	7401.95	585.00S	7172.62E	==>	7193.87	
15200.00	89.88	88.660	7402.16	582.65S	7272.60E	==>	7293.57	
15300.00	89.88	88.660	7402.36	580.31S	7372.57E	==>	7393.26	
15400.00	89.88	88.660	7402.57	577.96S	7472.54E	==>	7492.95	
15500.00	89.88	88.660	7402.77	575.61S	7572.51E	==>	7592.65	
15600.00	89.88	88.660	7402.97	573.27S	7672.49E	==>	7692.34	
15700.00	89.88	88.660	7403.18	570.92S	7772.46E	==>	7792.04	
15800.00	89.88	88.660	7403.38	568.58S	7872.43E	==>	7891.73	
15900.00	89.88	88.660	7403.59	566.23S	7972.40E	==>	7991.43	
16000.00	89.88	88.660	7403.79	563.88S	8072.37E	==>	8091.12	
16100.00	89.88	88.660	7404.00	561.54S	8172.35E	==>	8190.82	
16200.00	89.88	88.660	7404.20	559.19S	8272.32E	==>	8290.51	
16300.00	89.88	88.660	7404.41	556.85S	8372.29E	==>	8390.21	
16400.00	89.88	88.660	7404.61	554.50S	8472.26E	==>	8489.90	
16500.00	89.88	88.660	7404.82	552.15S	8572.24E	==>	8589.60	
16600.00	89.88	88.660	7405.02	549.81S	8672.21E	==>	8689.29	
16700.00	89.88	88.660	7405.23	547.46S	8772.18E	==>	8788.99	
16800.00	89.88	88.660	7405.43	545.12S	8872.15E	==>	8888.68	
16900.00	89.88	88.660	7405.64	542.77S	8972.12E	==>	8988.38	
17000.00	89.88	88.660	7405.84	540.42S	9072.10E	==>	9088.07	
17100.00	89.88	88.660	7406.05	538.08S	9172.07E	==>	9187.77	
17200.00	89.88	88.660	7406.25	535.73S	9272.04E	==>	9287.46	
17300.00	89.88	88.660	7406.46	533.39S	9372.01E	==>	9387.16	
17400.00	89.88	88.660	7406.66	531.04S	9471.99E	==>	9486.85	
17500.00	89.88	88.660	7406.87	528.69S	9571.96E	==>	9586.55	
17564.56	89.88	88.660	7407.00	527.18S	9636.50E	==>	9650.91	

All data is in Feet unless otherwise stated
Coordinates are from Slot MD's are from Rig and TVD's are from Rig (Planned Datum #1 4942.0ft above Mean Sea Level)
Vertical Section is from 0.00N 0.00E on azimuth 93.130 degrees
Bottom hole distance is 9650.91 Feet on azimuth 93.13 degrees from Wellhead
Calculation method uses Minimum Curvature method
Prepared by Microsoft
Date Printed: 1-Jan-2018



SYSDRILL
Well Design Combined Report
Wellbore: W Hester Farms II L-31-32HC (PWB)



Targets							
Name	North[ft]	East[ft]	TVD[ft]	Latitude	Longitude	Northing	Easting
Hester Farms II L-31-32HC - BH	527.18S	9636.50E	7407.00	40.53162100	-104.79533000	1437288.52	3195874.79
Hester Farms II L-31-32HC - EP	756.18S	122.16W	7387.00	40.53120000	-104.83044100	1437059.53	3186116.45

Survey Tool Program					
Reference	Survey Name	MD[ft]	TVD[ft]	Survey Tool	Error Model
597860	Planned	1500.00	1497.83	WdW Rate Gyro	Standard
597859	Planned	17564.56	7407.00	ISCWSA MWD	Rev 4 + SAG + FLT

Notes



SYSDRILL
Closest Approach + Clearance Factor Summary Report
Wellbore: W Hester Farms II L-31-32HC (PWB)



Ellipse separations are reported ONLY if BOTH wells have uncertainty data
Only Depth and Magnetic Reference Field error terms are correlated across tie points
Scan limit is calculated on CENTRE to CENTRE distance
Summary data uses Closest Approach clearance calculation for all minima
Hole size/Casings ARE included
Hole size/Casings are NOT subtracted from Centre-Centre distance
Confidence limit of 95.00% / 2.80 SD.

Wellbore		
Name	Created	Last Revised
W Hester Farms II L-31-32HC (PWB)	Dec-20-2017	Dec-20-2017

Well		
Name	Government ID	Last Revised
W Hester Farms II L-31-32HC		Dec-20-2017

Slot						
Name	Latitude	Longitude	Grid Northing	Grid Easting	North	East
Hester Farms II L-31-32HC	40.53327300	-104.82998100	1437815.6853	3186238.6062	165.04S	0.14E

Installation						
Name	Installation Position (Latitude)	Installation Position (Longitude)	Easting	Northing	Coord System Name	North Alignment
Hester Farms II Pad	40.53372600	-104.82997700	3186238.4710	1437980.7208	CO83-NF on NORTH AMERICAN DATUM 1983 datum	Grid

Clearance Summary							
Offset WellName	Separation [ft]	MD[ft]	Diverging From[ft]	Ellipse Separation [ft]	Ellipse MD[ft]	Clearance Factor	Clearance MD[ft]
W Galloway 1	0.25	17196.90	17196.90	-91.65	17196.90	0.00	17196.90
W Galloway 1	141.45	17325.99	17325.99	44.28	17364.24	1.42	17380.64
W Hester Farms II K-31-32HN	255.33	7808.18	7808.18	-325.47	17564.56	0.46	17564.56
W Rotharmel 12-32	294.57	13373.96	13373.96	61.55	13378.02	1.26	13378.02
W Rotharmel 22-32	316.35	14542.72	14542.72	39.24	14542.72	1.14	14542.72
W Deines 31-14	413.89	12041.38	12041.38	230.85	12049.28	2.26	12049.28
W Moody 32-32D	445.93	16040.65	16040.65	81.43	16051.90	1.22	16051.90
W Hester Farms II J-31-32HN	481.24	7813.01	7813.01	-159.75	17564.56	0.76	17564.56
W Hester 31-23	490.90	8095.87	8095.87	444.22	8112.27	10.26	8194.29
W Hester 31-24	497.69	9273.72	9273.72	415.56	9293.37	6.02	9326.18
HESTER FARMS K-36HC	518.07	7803.19	7803.19	483.35	7803.19	14.92	7803.19
W Moody 42-32D	549.98	17505.98	17505.98	120.27	17511.88	1.28	17511.88
HESTER FARMS L-36HN	552.97	7803.19	7803.19	520.20	7803.19	16.88	7803.19
W Hester Farms II I-31-32HN	633.46	7818.37	7818.37	-125.70	17564.56	0.84	17564.56
HESTER FARMS J-36HN	687.65	7803.19	7803.19	633.58	7803.19	12.72	7803.19
HESTER FARMS	798.32	7803.19	7803.19	764.06	7803.19	23.30	7803.19

All data is in Feet unless otherwise stated
Coordinates are from Slot MD's are from Rig and TVD's are from Rig (Planned Datum #1 4942.0ft above Mean Sea Level)
Vertical Section is from 0.00N 0.00E on azimuth 93.130 degrees
Prepared by Microsoft
Date Printed: 2-Jan-2018



SYSDRILL
Closest Approach + Clearance Factor Summary Report
Wellbore: W Hester Farms II L-31-32HC (PWB)



Clearance Summary							
Offset WellName	Separation [ft]	MD[ft]	Diverging From[ft]	Ellipse Separation [ft]	Ellipse MD[ft]	Clearance Factor	Clearance MD[ft]
I-36HN							
W Hester Farms II H-31-32HC	839.87	17564.56	17564.56	69.17	17564.56	1.09	17564.56
HESTER FARMS H-36HC	955.17	7803.19	7803.19	886.89	7803.19	13.99	7803.19
W Rotharmel 11-32H	1059.39	17564.56	17564.56	498.70	17564.56	1.89	17564.56
W Hester Farms II G-31-32HN	1059.67	7828.49	7828.49	665.06	12754.66	2.66	12771.06
HESTER FARMS G-36HN	1102.45	7803.19	7803.19	1046.91	7803.19	19.85	7803.19
W Hester 31-25	1157.92	8539.14	8539.14	1099.21	8571.59	18.13	8932.48
W Hester Farms II F-31-32HN	1281.60	7833.40	7833.40	537.40	17564.56	1.71	17564.56
W Hester Farms F-36HN	1409.32	7803.19	7803.19	1340.39	7803.19	20.43	7816.99
W Hester Farms II E-31-32HN	1471.76	7803.19	7803.19	704.97	17564.56	1.92	17564.56
W Hester Farms E-36HC	1516.47	7803.19	7803.19	1446.32	7803.19	21.45	8128.67
W Moody 41-32D	1631.34	17372.32	17372.32	1207.31	17429.86	3.83	17500.00
W Hester Farms D-36HN	1667.87	7803.19	7803.19	1597.83	7803.19	23.11	8309.12
W Hester Farms II D-31-32HC	1679.41	17564.56	17564.56	909.40	17564.56	2.18	17564.56
W Moody 31-32D	1800.62	16128.82	16128.82	1432.11	16183.14	4.86	16281.56
W Deines 31-11	1809.38	12274.62	12274.62	1616.73	12328.15	9.20	12574.21
W Hester 31-21	1825.78	9621.46	9621.46	1730.73	9670.67	17.59	10212.01
W Hester 31-22	1871.56	8341.98	8341.98	1818.22	8391.14	28.03	9326.18
W Hester Farms II C-31-32HN	1893.45	7803.19	7803.19	1129.30	17564.56	2.47	17564.56
W Rotharmel 21-32	1902.29	14714.08	14714.08	1617.71	14772.38	6.62	14936.42
W Rotharmel 11-32	1922.49	13427.23	13427.23	1686.56	13476.44	8.02	13689.70
W Hester Farms C-36HN	1997.77	7803.19	7803.19	1928.45	7803.19	26.42	8784.84
W Hester Farms II B-31-32HN	2112.18	7803.19	7803.19	1351.92	17564.56	2.77	17564.56
W Hester Farms B-36HC	2113.99	7803.19	7803.19	2044.16	7803.19	26.65	8948.88
W Hester Farms A-36HN	2266.43	7803.19	7803.19	2196.76	7803.19	27.54	9129.33
W Hester Farms II A-31-32HN	2307.73	7803.19	7803.19	1542.00	17564.56	3.00	17564.56

All data is in Feet unless otherwise stated
Coordinates are from Slot MD's are from Rig and TVD's are from Rig (Planned Datum #1 4942.0ft above Mean Sea Level)
Vertical Section is from 0.00N 0.00E on azimuth 93.130 degrees
Prepared by Microsoft
Date Printed: 2-Jan-2018

