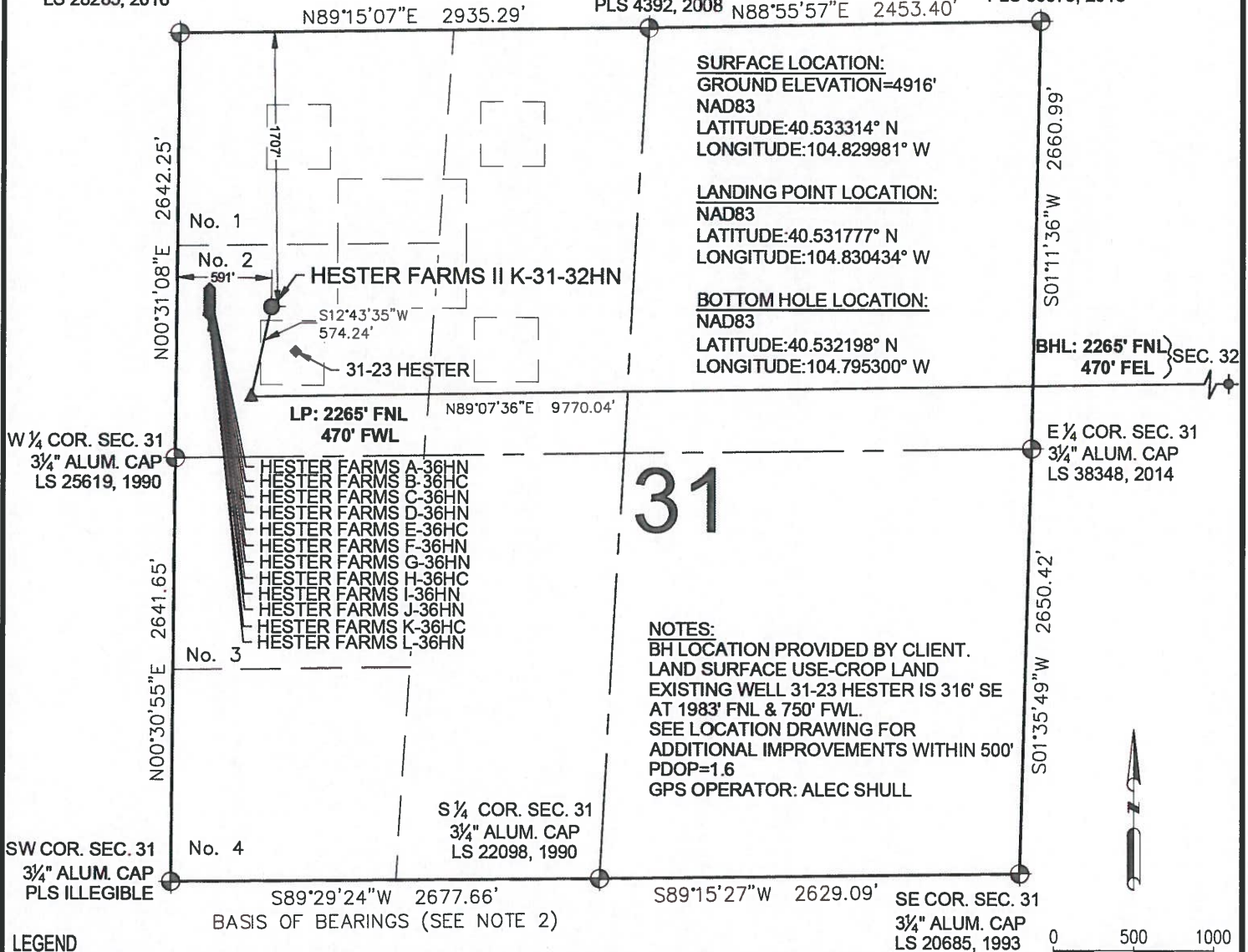


HESTER FARMS II K-31-32HN WELL LOCATION CERTIFICATE

NW COR. SEC. 31
2 1/2" ALUM. CAP
LS 28285, 2016

N 1/4 COR. SEC. 31
3 3/4" ALUM. CAP
PLS 4392, 2008

NE COR. SEC. 31
2 1/2" ALUM. CAP
PLS 36073, 2013



7535 Hilltop Circle
Denver, CO 80221
(303) 928-7128
www.ascentgeomatics.com

FIELD DATE:
6-1-17

DRAWING DATE:
11-21-17

BY:
FWM

CHECKED:
IJM

WELL NAME:
HESTER FARMS II K-31-32HN

SURFACE LOCATION:

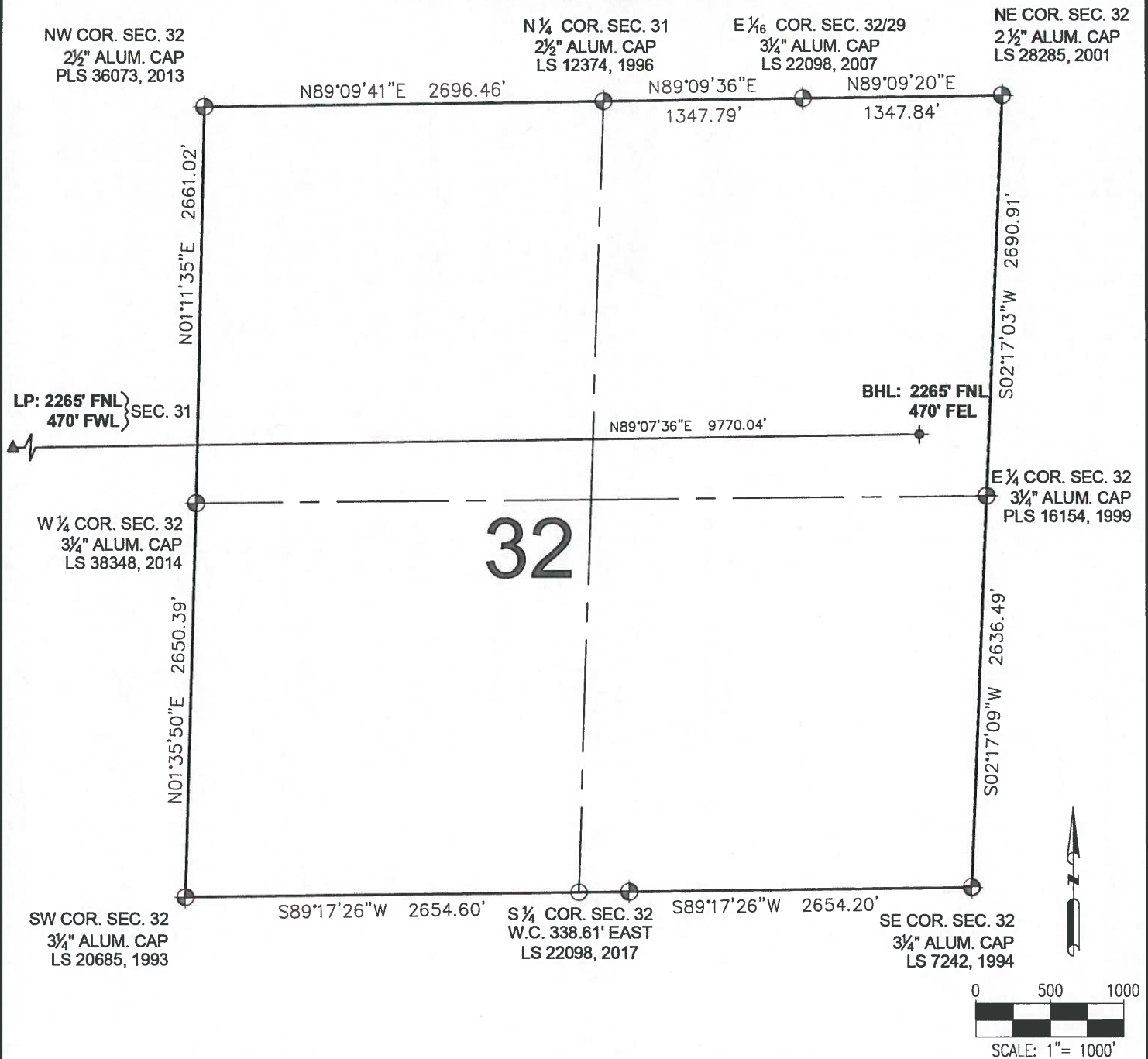
LOT 2 NW 1/4 SEC. 31, T7N, R66W, 6TH P.M.
WELD COUNTY, COLORADO

PREPARED FOR:



BAYSWATER
EXPLORATION AND PRODUCTION, LLC

HESTER FARMS II K-31-32HN WELL LOCATION CERTIFICATE





LEGEND

- ⊕ = EXISTING MONUMENT
- = CALCULATED POSITION
- = PROPOSED WELL
- ◆ = EXISTING WELL
- ⬮ = BOTTOM HOLE
- ▲ = LANDING POINT
- LP = LANDING POINT
- BHL = BOTTOM HOLE LOCATION

BRIAN C. RITZ, PLS 38452
 COLORADO LICENSED PROFESSIONAL LAND SURVEYOR
 FOR AND ON BEHALF OF P.F.S., LLC
 d.b.a. ASCENT GEOMATICS SOLUTIONS



SHEET 2 OF 2

 <p>7535 Hilltop Circle Denver, CO 80221 (303) 928-7128 www.ascentgeomatics.com</p>	FIELD DATE: 6-1-17 DRAWING DATE: 11-21-17 BY: FWM CHECKED: IJM	WELL NAME: HESTER FARMS II K-31-32HN SURFACE LOCATION: LOT 2 NW 1/4 SEC. 31, T7N, R66W, 6TH P.M. WELD COUNTY, COLORADO	PREPARED FOR:  BAYSWATER EXPLORATION AND PRODUCTION, LLC
--	---	---	--