

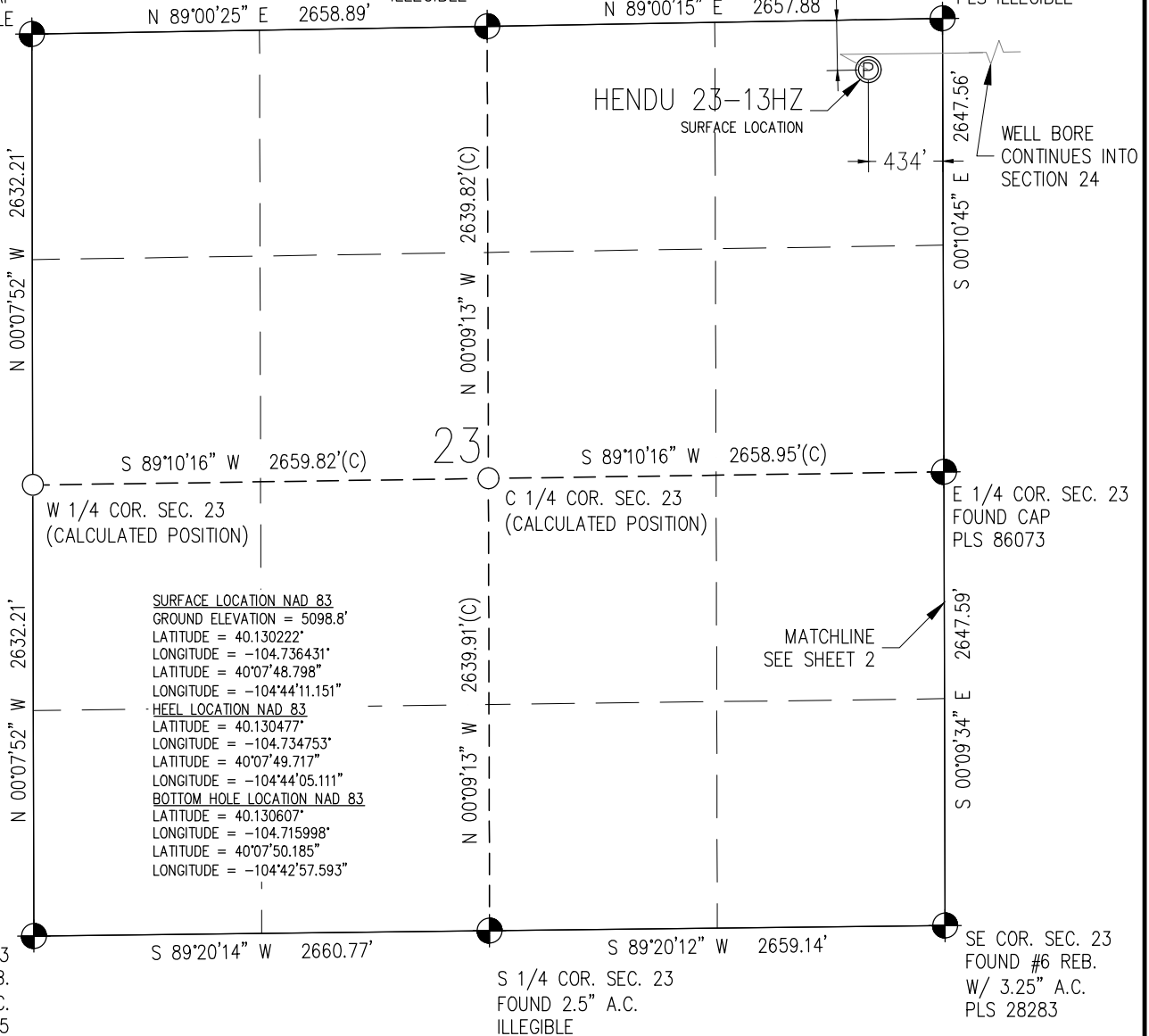
M:\co - Well Head Staking\ANAO2N66W23-01 (HENDU)\Drawings\ANAO2N66W23-01 (HENDU) - WELL CERTS & MULTI.dwg, 2/1/2018 12:10:18 PM, Joynne Hobin

T2N, R66W

NW COR. SEC. 23
FOUND CAP
ILLEGIBLE

N 1/4 COR. SEC. 23
FOUND 2.5" A.C.
ILLEGIBLE

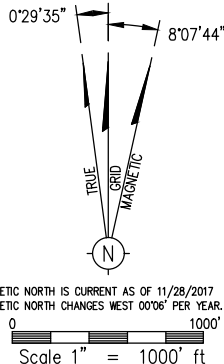
NE COR. SEC. 23
FOUND #4 REB.
W/2.5" A.C.
PLS ILLEGIBLE



I HEREBY CERTIFY THAT THIS WELL LOCATION CERTIFICATE WAS PREPARED BY ME, OR UNDER MY DIRECT SUPERVISION, THAT THE FIELD WORK WAS COMPLETED ON 12/1/2017, THAT IT IS NOT A LAND SURVEY PLAT OR AN IMPROVEMENT SURVEY PLAT, AND THAT IT IS NOT TO BE RELIED UPON FOR ESTABLISHMENT OF FENCE, BUILDING, OR OTHER FUTURE IMPROVEMENT LINES.

AARON A. DEMO
Professional Land Surveyor Registration No. 38285
State of Colorado
FOR AND ON BEHALF OF BASELINE ENGINEERING, INC.

NOTICE
ACCORDING TO COLORADO STATE LAW YOU MUST COMMENCE ANY LEGAL ACTION BASED UPON ANY DEFECT IN THIS SURVEY WITHIN THREE YEARS AFTER YOU FIRST DISCOVER SUCH DEFECT. IN NO EVENT MAY ANY ACTION BASED UPON ANY DEFECT IN THIS SURVEY BE COMMENCED MORE THAN TEN YEARS FROM THE DATE ON THE CERTIFICATION SHOWN HEREON.



NOTES:

1. INDICATES SECTION CORNER
2. INDICATES CALCULATED CORNER
3. (C) INDICATES CALCULATED DIMENSION
4. ELEVATION BASED ON NAVD88 GEOID12B)
5. BASIS OF BEARING DERIVED FROM COLORADO COORDINATE SYSTEM OF 1983 NORTH ZONE.
6. ALL MEASURED DISTANCES ARE GRID. COMBINED SCALE FACTOR .99971671 CALCULATED FROM THE NORTHEAST CORNER OF SECTION 23, T2N, R66W
7. OPERATOR: ALLEN SHAFFETT / PDOP = 1.3
8. SEE ADDENDUM TO WELL LOCATION CERTIFICATE FOR EXISTING IMPROVEMENTS WITHIN 500' OF THE WELL PAD.
9. WELL FOOTAGES ARE MEASURED AT RIGHT ANGLES TO THE SECTION LINES.
10. THE BOTTOM OF HOLE BEARS N88°59'00\"W 5254' FROM THE HEEL LOCATION

WELL PAD - HENDU 23-7HZ

HENDU 23-13HZ
WELL LOCATION CERTIFICATE
293' FNL & 434' FEL NENE (SURFACE)
LOCATED IN SECTION 23
T2N, R66W, 6TH P.M.
WELD COUNTY, COLORADO
204' FNL & 35' FNL NNWN (HEEL)
LOCATED IN SECTION 24
T2N, R66W, 6TH P.M.
WELD COUNTY, COLORADO
195' FNL & 21' FEL NENE (BOTTOM)
LOCATED IN SECTION 24
T2N, R66W, 6TH P.M.
WELD COUNTY, COLORADO

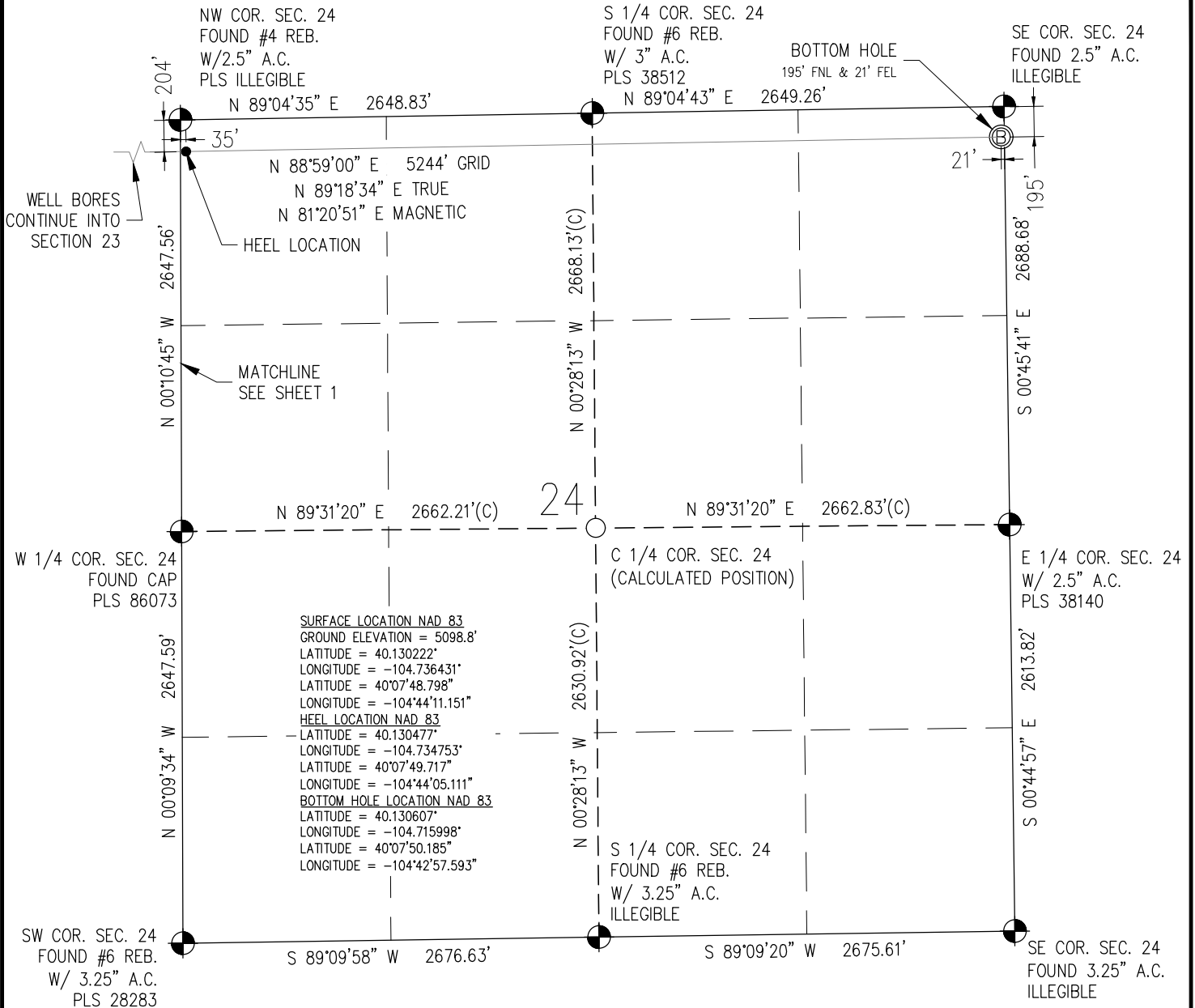
**Kerr-McGee Oil &
Gas Onshore L.P.**

1099 18th Street
Denver, Colorado 80202

DRAWN BY JMH	CHECKED BY AAD
INITIAL SUBMITTAL	12/15/2017
REVISED	2/1/2018
DRAWING SIZE	8.5" X 11"
JOB NO.	ANAO2N66W23-01
SHEET	1 OF 2

BASELINE
Engineering - Planning - Surveying
4007 S. LINCOLN AVENUE, SUITE 405 - LOVELAND, COLORADO 80537
P: 970.353.7800 - F: 970.353.7801 - www.baselinescorp.com

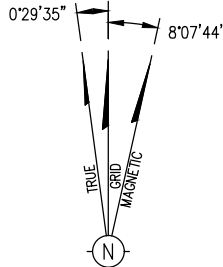
T2N, R66W



I HEREBY CERTIFY THAT THIS WELL LOCATION CERTIFICATE WAS PREPARED BY ME, OR UNDER MY DIRECT SUPERVISION, THAT THE FIELD WORK WAS COMPLETED ON 12/1/2017, THAT IT IS NOT A LAND SURVEY PLAT OR AN IMPROVEMENT SURVEY PLAT, AND THAT IT IS NOT TO BE RELIED UPON FOR ESTABLISHMENT OF FENCE, BUILDING, OR OTHER FUTURE IMPROVEMENT LINES.

AARON A. DEMO
Professional Land Surveyor Registration No. 38285
State of Colorado
FOR AND ON BEHALF OF BASELINE ENGINEERING, INC.

NOTICE
ACCORDING TO COLORADO STATE LAW YOU MUST COMMENCE ANY LEGAL ACTION BASED UPON ANY DEFECT IN THIS SURVEY WITHIN THREE YEARS AFTER YOU FIRST DISCOVER SUCH DEFECT. IN NO EVENT MAY ANY ACTION BASED UPON ANY DEFECT IN THIS SURVEY BE COMMENCED MORE THAN TEN YEARS FROM THE DATE ON THE CERTIFICATION SHOWN HEREON.



NOTE
MAGNETIC NORTH IS CURRENT AS OF 11/28/2017
MAGNETIC NORTH CHANGES WEST 00'06\"/>

NOTES:

1. ● INDICATES SECTION CORNER
2. ○ INDICATES CALCULATED CORNER
3. (C) INDICATES CALCULATED DIMENSION
4. ELEVATION BASED ON NAVD88 GEOID12B)
5. BASIS OF BEARING DERIVED FROM COLORADO COORDINATE SYSTEM OF 1983 NORTH ZONE.
6. ALL MEASURED DISTANCES ARE GRID. COMBINED SCALE FACTOR .99971671 CALCULATED FROM THE NORTHEAST CORNER OF SECTION 23, T2N, R66W
7. OPERATOR: ALLEN SHAFFETT / PDOP = 1.3
8. SEE ADDENDUM TO WELL LOCATION CERTIFICATE FOR EXISTING IMPROVEMENTS WITHIN 500' OF THE WELL PAD.
9. WELL FOOTAGES ARE MEASURED AT RIGHT ANGLES TO THE SECTION LINES.
10. THE BOTTOM OF HOLE BEARS N88°59'00\"/>

WELL PAD — HENDU 23—7HZ

HENDU 23—13HZ
WELL LOCATION CERTIFICATE
293' FNL & 434' FEL NENE (SURFACE)
LOCATED IN SECTION 23
T2N, R66W, 6TH P.M.
WELD COUNTY, COLORADO
204' FNL & 35' FNL NNW (HEEL)
LOCATED IN SECTION 24
T2N, R66W, 6TH P.M.
WELD COUNTY, COLORADO
195' FNL & 21' FEL NENE (BOTTOM)
LOCATED IN SECTION 24
T2N, R66W, 6TH P.M.
WELD COUNTY, COLORADO

**Kerr-McGee Oil &
Gas Onshore L.P.**

1099 18th Street
Denver, Colorado 80202

DRAWN BY JMH	CHECKED BY AAD
INITIAL SUBMITTAL	12/15/2017
REVISED	2/1/2018
DRAWING SIZE	8.5\"/>

BASELINE
Engineering - Planning - Surveying
4007 S. LINCOLN AVENUE, SUITE 405 • LOVELAND, COLORADO 80537
P: 970.353.7800 • F: 970.353.7801 • www.baselinecorp.com