



# Kerr-McGee Oil & Gas Onshore LP

A subsidiary of Anadarko Petroleum Corporation

1099 18<sup>th</sup> Street  
Denver, CO 80202  
720-929-6000

January 29, 2018

Matt Lepore  
Director, Colorado Oil and Gas Conservation Commission  
Department of Natural Resources  
The Chancery Building  
1120 Lincoln Street, Suite 801  
Denver, CO 80203

Re: **30 Day Certification Letter - 318A.e**  
POLO 24-8HZ (Doc No. 401479371)  
Township 2 North, Range 66 West  
Section 24: NWSE  
Unit Acreage: 240 Acres  
Proposed Spacing Unit:  
02N66W SEC 24: E2SE;  
02N66W SEC 25: E2E2  
Weld County, Colorado

Dear Director Lepore:

Kerr McGee Oil and Gas Onshore LP ("KMG") hereby certifies that KMG owns one hundred percent (100%) of the leasehold interest in the mineral rights in the proposed spacing unit. KMG hereby respectfully requests approval of this boundary well.

If you have any questions or issues regarding this permit, please contact me at (720) 929-6907.

Sincerely,

**Kerr-McGee Oil and Gas Onshore LP**

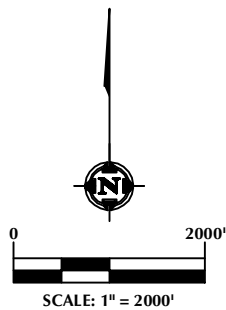
A handwritten signature in black ink, appearing to read 'John Piekara', written over a horizontal line.

John Piekara  
Sr. Regulatory Analyst

Enclosure

DISTANCE FROM COMPLETED  
PORTION OF WELLBORE TO  
NEAREST UNIT BOUNDARY= 478'

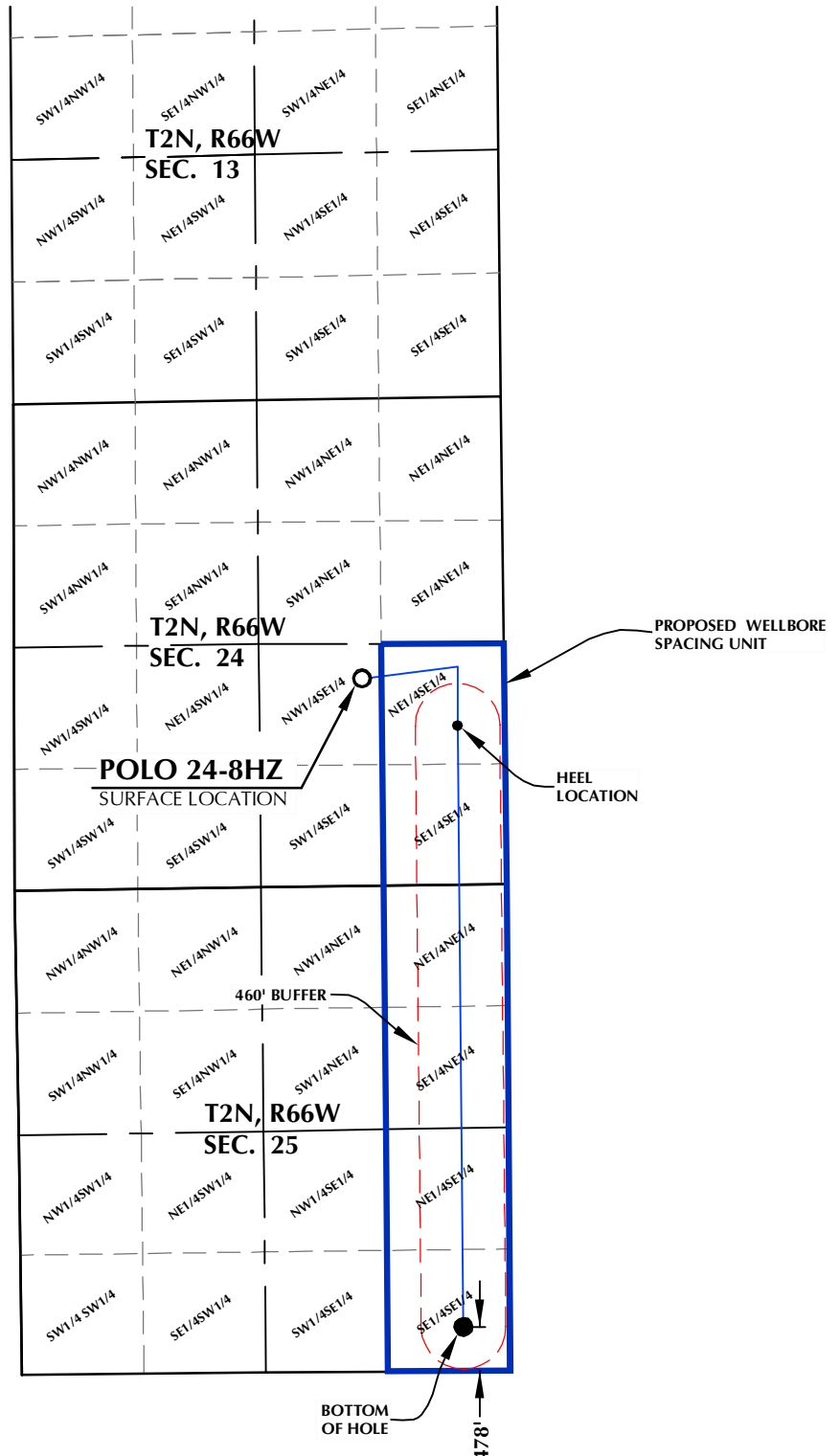
# POLO 24-8HZ WELLBORE SPACING UNIT



**SURFACE LOCATION: NAD 83**  
GROUND ELEVATION= 5060.0'  
LATITUDE= 40.122759°  
LONGITUDE= -104.721403°  
LATITUDE= 40°07'21.931"  
LONGITUDE= -104°43'17.049"  
**HEEL LOCATION: NAD 83**  
LATITUDE= 40.121331°  
LONGITUDE= -104.717701°  
LATITUDE= 40°07'16.792"  
LONGITUDE= -104°43'03.725"  
**BOTTOM HOLE LOCATION: NAD 83**  
LATITUDE= 40.103366°  
LONGITUDE= -104.717674°  
LATITUDE= 40°06'12.118"  
LONGITUDE= -104°43'03.626"

## NOTES:

1. DRAWING LATITUDE AND LONGITUDE COORDINATES ARE NAD 83 (2011)(EPOCH:2010)
2. ELEVATION BASED ON NAVD88 (GEOID12B)
3. BASIS OF BEARING DERIVED FROM COLORADO COORDINATE SYSTEM OF 1983 NORTH ZONE.
4. ALL MEASURED DISTANCES ARE GRID.  
COMBINED SCALE FACTOR: .99972064  
CALCULATED FROM THE S. 1/4 CORNER OF SECTION 24, T2N, R66W



## WELL PAD - POLO 24-6HZ

POLO 24-8HZ  
WELLBORE SPACING UNIT  
2257' FSL & 1545' FEL NWSE (SURFACE)  
1731' FSL & 512' FEL NESE (HEEL)  
LOCATED IN SECTION 24  
478' FSL & 504' FEL SESE (BOTTOM)  
LOCATED IN SECTION 25  
T2N, R66W, 6TH P.M.  
WELD COUNTY, COLORADO

**Kerr-McGee Oil &  
Gas Onshore L.P.**  
1099 18th Street  
Denver, Colorado 80202



## CONSULTING, LLC

**SHERIDAN OFFICE**  
1095 Saberton Avenue  
Sheridan, Wyoming 82801  
Phone 307-674-0609

**LOVELAND OFFICE**  
1635 Foxtrail Drive, Suite 204  
Loveland, Colorado 80538  
Phone 970-776-4331

DRAFTED BY:	LMO	CHECKED BY:	RKF
DATE DRAFTED:	10/12/17	DATE SURVEYED:	9/20/17
REVISED:		FILE NAME:	17-72