

Weld County, Colorado
Section 06-T07N-R64W
Almont 5-02-04L
plan1

Section Details

Sec	MD	Inc	Azi	TVD	+N/-S	+E/-W	Dleg	Vsect	Annotation
1	0.00	0.00	0.00	0.00	0.00	0.00	0.00	0.00	
2	3000.00	0.00	0.00	3000.00	0.00	0.00	0.00	0.00	KOP Begin 1°/100' build
3	3367.61	3.68	103.70	3367.36	-2.79	11.45	1.00	11.45	Begin 3.68° tangent
4	6774.99	3.68	103.70	6767.72	-54.53	223.70	0.00	223.58	Begin 10°/100' build/turn
5	7639.35	90.00	89.51	7305.00	-58.15	795.61	10.00	795.47	Begin 90.00° lateral
6	17295.62	90.00	89.51	7305.00	23.64	10451.53	0.00	10451.56	PBHL/TD 17295.62 MD/7305.00 TVD

DESIGN TARGET DETAILS

Name	TVD	+N/-S	+E/-W	Northing	Easting	Latitude	Longitude
Almont 5-02-04L LP 1290 FNL 470 FWL	7305.00	-58.15	795.61	14747546.34	1756650.53	40.60560384	-104.58123226
Almont 5-02-04L PBHL 1290 FNL 470 FEL	7305.00	23.64	10451.53	14747673.75	1766305.94	40.60582233	-104.54644435

Almont 5-02-04L			
Surf loc: 1222 FNL 325 FEL Section 06-T08N-R64W			
NAD83 Colorado - HARN			
Universal Transverse Mercator (US Survey Feet)			
Zone 13N (108 W to 102 W)			
RKB=5001+24 @ 5025.00ft			
Northing	Easting	Latitude	Longitude
14747600.73	1755854.66	40.60576355	-104.58409863

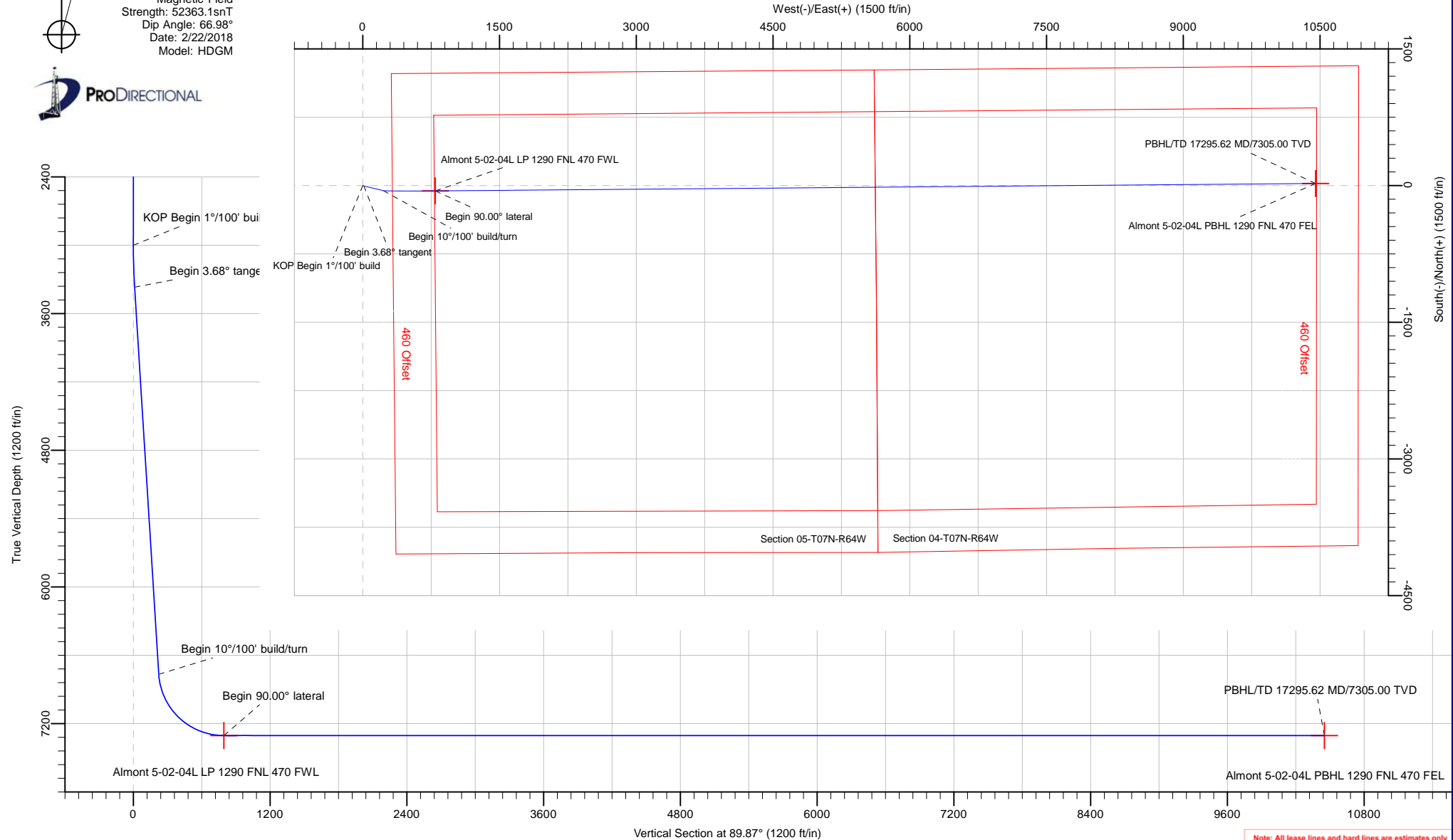


Azimuths to True North
Magnetic North: 8.00°

Magnetic Field
Strength: 52363.1snT
Dip Angle: 66.98°
Date: 2/22/2018
Model: HDGM

Azimuth Corrections:

To convert a Magnetic Direction to a True Direction, Add 8.00° East



Note: All lease lines and hard lines are estimates only and are subject to customers approval.

Database:	DB_Jul2216dt_v14	Local Co-ordinate Reference:	Well Almont 5-02-04L
Company:	Confluence Resources	TVD Reference:	RKB=5001+24 @ 5025.00ft
Project:	Weld County, Colorado	MD Reference:	RKB=5001+24 @ 5025.00ft
Site:	Section 06-T07N-R64W	North Reference:	True
Well:	Almont 5-02-04L	Survey Calculation Method:	Minimum Curvature
Wellbore:	Original Hole		
Design:	plan1		

Project	Weld County, Colorado		
Map System:	Universal Transverse Mercator (US Survey Feet)	System Datum:	Mean Sea Level
Geo Datum:	NAD83 Colorado - HARN		
Map Zone:	Zone 13N (108 W to 102 W)		

Site		Section 06-T07N-R64W			
Site Position:		Northing:	14,746,184.54 usft	Latitude:	40.60187654
From:	Map	Easting:	1,755,730.03 usft	Longitude:	-104.58457171
Position Uncertainty:	0.00 ft	Slot Radius:	13-3/16 "	Grid Convergence:	0.27 °

Well	Almont 5-02-04L, Surf loc: 1222 FNL 325 FEL Section 06-T08N-R64W					
Well Position	+N/-S	1,415.59 ft	Northing:	14,747,600.73 usft	Latitude:	40.60576354
	+E/-W	131.31 ft	Easting:	1,755,854.66 usft	Longitude:	-104.58409862
Position Uncertainty		0.00 ft	Wellhead Elevation:		Ground Level:	5,001.00 ft

Wellbore	Original Hole				
Magnetics	Model Name	Sample Date	Declination (°)	Dip Angle (°)	Field Strength (nT)
	HDGM	2/22/2018	8.00	66.98	52,363.10000000

Design	plan1			
Audit Notes:				
Version:	Phase:	PLAN	Tie On Depth:	0.00
Vertical Section:	Depth From (TVD) (ft)	+N/-S (ft)	+E/-W (ft)	Direction (°)
	0.00	0.00	0.00	89.87

Plan Survey Tool Program	Date	2/22/2018		
Depth From (ft)	Depth To (ft)	Survey (Wellbore)	Tool Name	Remarks
1	0.00	17,295.62	plan1 (Original Hole)	

Plan Sections										
Measured Depth (ft)	Inclination (°)	Azimuth (°)	Vertical Depth (ft)	+N/-S (ft)	+E/-W (ft)	Dogleg Rate (°/100ft)	Build Rate (°/100ft)	Turn Rate (°/100ft)	TFO (°)	Target
0.00	0.00	0.00	0.00	0.00	0.00	0.00	0.00	0.00	0.00	
3,000.00	0.00	0.00	3,000.00	0.00	0.00	0.00	0.00	0.00	0.00	
3,367.61	3.68	103.70	3,367.36	-2.79	11.45	1.00	1.00	0.00	103.70	
6,774.99	3.68	103.70	6,767.72	-54.53	223.70	0.00	0.00	0.00	0.00	
7,639.35	90.00	89.51	7,305.00	-58.15	795.61	10.00	9.99	-1.64	-14.21	Almont 5-02-04L LP 1
17,295.62	90.00	89.51	7,305.00	23.64	10,451.53	0.00	0.00	0.00	0.00	Almont 5-02-04L PBH

Database:	DB_Jul2216dt_v14	Local Co-ordinate Reference:	Well Almost 5-02-04L
Company:	Confluence Resources	TVD Reference:	RKB=5001+24 @ 5025.00ft
Project:	Weld County, Colorado	MD Reference:	RKB=5001+24 @ 5025.00ft
Site:	Section 06-T07N-R64W	North Reference:	True
Well:	Almost 5-02-04L	Survey Calculation Method:	Minimum Curvature
Wellbore:	Original Hole		
Design:	plan1		

Planned Survey									
Measured Depth (ft)	Inclination (°)	Azimuth (°)	Vertical Depth (ft)	+N/-S (ft)	+E/-W (ft)	Vertical Section (ft)	Dogleg Rate (°/100ft)	Build Rate (°/100ft)	Turn Rate (°/100ft)
0.00	0.00	0.00	0.00	0.00	0.00	0.00	0.00	0.00	0.00
100.00	0.00	0.00	100.00	0.00	0.00	0.00	0.00	0.00	0.00
200.00	0.00	0.00	200.00	0.00	0.00	0.00	0.00	0.00	0.00
300.00	0.00	0.00	300.00	0.00	0.00	0.00	0.00	0.00	0.00
400.00	0.00	0.00	400.00	0.00	0.00	0.00	0.00	0.00	0.00
500.00	0.00	0.00	500.00	0.00	0.00	0.00	0.00	0.00	0.00
600.00	0.00	0.00	600.00	0.00	0.00	0.00	0.00	0.00	0.00
700.00	0.00	0.00	700.00	0.00	0.00	0.00	0.00	0.00	0.00
800.00	0.00	0.00	800.00	0.00	0.00	0.00	0.00	0.00	0.00
900.00	0.00	0.00	900.00	0.00	0.00	0.00	0.00	0.00	0.00
1,000.00	0.00	0.00	1,000.00	0.00	0.00	0.00	0.00	0.00	0.00
1,100.00	0.00	0.00	1,100.00	0.00	0.00	0.00	0.00	0.00	0.00
1,200.00	0.00	0.00	1,200.00	0.00	0.00	0.00	0.00	0.00	0.00
1,300.00	0.00	0.00	1,300.00	0.00	0.00	0.00	0.00	0.00	0.00
1,400.00	0.00	0.00	1,400.00	0.00	0.00	0.00	0.00	0.00	0.00
1,500.00	0.00	0.00	1,500.00	0.00	0.00	0.00	0.00	0.00	0.00
1,600.00	0.00	0.00	1,600.00	0.00	0.00	0.00	0.00	0.00	0.00
1,700.00	0.00	0.00	1,700.00	0.00	0.00	0.00	0.00	0.00	0.00
1,800.00	0.00	0.00	1,800.00	0.00	0.00	0.00	0.00	0.00	0.00
1,900.00	0.00	0.00	1,900.00	0.00	0.00	0.00	0.00	0.00	0.00
2,000.00	0.00	0.00	2,000.00	0.00	0.00	0.00	0.00	0.00	0.00
2,100.00	0.00	0.00	2,100.00	0.00	0.00	0.00	0.00	0.00	0.00
2,200.00	0.00	0.00	2,200.00	0.00	0.00	0.00	0.00	0.00	0.00
2,300.00	0.00	0.00	2,300.00	0.00	0.00	0.00	0.00	0.00	0.00
2,400.00	0.00	0.00	2,400.00	0.00	0.00	0.00	0.00	0.00	0.00
2,500.00	0.00	0.00	2,500.00	0.00	0.00	0.00	0.00	0.00	0.00
2,600.00	0.00	0.00	2,600.00	0.00	0.00	0.00	0.00	0.00	0.00
2,700.00	0.00	0.00	2,700.00	0.00	0.00	0.00	0.00	0.00	0.00
2,800.00	0.00	0.00	2,800.00	0.00	0.00	0.00	0.00	0.00	0.00
2,900.00	0.00	0.00	2,900.00	0.00	0.00	0.00	0.00	0.00	0.00
3,000.00	0.00	0.00	3,000.00	0.00	0.00	0.00	0.00	0.00	0.00
KOP Begin 1°/100' build									
3,100.00	1.00	103.70	3,099.99	-0.21	0.85	0.85	1.00	1.00	0.00
3,200.00	2.00	103.70	3,199.96	-0.83	3.39	3.39	1.00	1.00	0.00
3,300.00	3.00	103.70	3,299.86	-1.86	7.63	7.62	1.00	1.00	0.00
3,367.61	3.68	103.70	3,367.36	-2.79	11.45	11.45	1.00	1.00	0.00
Begin 3.68° tangent									
3,400.00	3.68	103.70	3,399.68	-3.28	13.47	13.46	0.00	0.00	0.00
3,500.00	3.68	103.70	3,499.48	-4.80	19.70	19.69	0.00	0.00	0.00
3,600.00	3.68	103.70	3,599.27	-6.32	25.93	25.92	0.00	0.00	0.00
3,700.00	3.68	103.70	3,699.06	-7.84	32.16	32.14	0.00	0.00	0.00
3,800.00	3.68	103.70	3,798.86	-9.36	38.39	38.37	0.00	0.00	0.00
3,900.00	3.68	103.70	3,898.65	-10.88	44.62	44.59	0.00	0.00	0.00
4,000.00	3.68	103.70	3,998.45	-12.40	50.85	50.82	0.00	0.00	0.00
4,100.00	3.68	103.70	4,098.24	-13.91	57.08	57.04	0.00	0.00	0.00
4,200.00	3.68	103.70	4,198.04	-15.43	63.30	63.27	0.00	0.00	0.00
4,300.00	3.68	103.70	4,297.83	-16.95	69.53	69.50	0.00	0.00	0.00
4,400.00	3.68	103.70	4,397.62	-18.47	75.76	75.72	0.00	0.00	0.00
4,500.00	3.68	103.70	4,497.42	-19.99	81.99	81.95	0.00	0.00	0.00
4,600.00	3.68	103.70	4,597.21	-21.51	88.22	88.17	0.00	0.00	0.00
4,700.00	3.68	103.70	4,697.01	-23.02	94.45	94.40	0.00	0.00	0.00
4,800.00	3.68	103.70	4,796.80	-24.54	100.68	100.62	0.00	0.00	0.00
4,900.00	3.68	103.70	4,896.59	-26.06	106.91	106.85	0.00	0.00	0.00

Database:	DB_Jul2216dt_v14	Local Co-ordinate Reference:	Well Almont 5-02-04L
Company:	Confluence Resources	TVD Reference:	RKB=5001+24 @ 5025.00ft
Project:	Weld County, Colorado	MD Reference:	RKB=5001+24 @ 5025.00ft
Site:	Section 06-T07N-R64W	North Reference:	True
Well:	Almont 5-02-04L	Survey Calculation Method:	Minimum Curvature
Wellbore:	Original Hole		
Design:	plan1		

Planned Survey									
Measured Depth (ft)	Inclination (°)	Azimuth (°)	Vertical Depth (ft)	+N/-S (ft)	+E/-W (ft)	Vertical Section (ft)	Dogleg Rate (°/100ft)	Build Rate (°/100ft)	Turn Rate (°/100ft)
5,000.00	3.68	103.70	4,996.39	-27.58	113.14	113.08	0.00	0.00	0.00
5,100.00	3.68	103.70	5,096.18	-29.10	119.37	119.30	0.00	0.00	0.00
5,200.00	3.68	103.70	5,195.98	-30.62	125.60	125.53	0.00	0.00	0.00
5,300.00	3.68	103.70	5,295.77	-32.14	131.83	131.75	0.00	0.00	0.00
5,400.00	3.68	103.70	5,395.57	-33.65	138.05	137.98	0.00	0.00	0.00
5,500.00	3.68	103.70	5,495.36	-35.17	144.28	144.20	0.00	0.00	0.00
5,600.00	3.68	103.70	5,595.15	-36.69	150.51	150.43	0.00	0.00	0.00
5,700.00	3.68	103.70	5,694.95	-38.21	156.74	156.66	0.00	0.00	0.00
5,800.00	3.68	103.70	5,794.74	-39.73	162.97	162.88	0.00	0.00	0.00
5,900.00	3.68	103.70	5,894.54	-41.25	169.20	169.11	0.00	0.00	0.00
6,000.00	3.68	103.70	5,994.33	-42.77	175.43	175.33	0.00	0.00	0.00
6,100.00	3.68	103.70	6,094.13	-44.28	181.66	181.56	0.00	0.00	0.00
6,200.00	3.68	103.70	6,193.92	-45.80	187.89	187.78	0.00	0.00	0.00
6,300.00	3.68	103.70	6,293.71	-47.32	194.12	194.01	0.00	0.00	0.00
6,400.00	3.68	103.70	6,393.51	-48.84	200.35	200.24	0.00	0.00	0.00
6,500.00	3.68	103.70	6,493.30	-50.36	206.58	206.46	0.00	0.00	0.00
6,600.00	3.68	103.70	6,593.10	-51.88	212.80	212.69	0.00	0.00	0.00
6,700.00	3.68	103.70	6,692.89	-53.40	219.03	218.91	0.00	0.00	0.00
6,774.99	3.68	103.70	6,767.72	-54.53	223.70	223.58	0.00	0.00	0.00
Begin 10°/100' build/turn									
6,800.00	6.13	97.94	6,792.64	-54.91	225.81	225.68	10.00	9.82	-23.02
6,900.00	16.09	92.64	6,890.65	-56.29	244.99	244.86	10.00	9.96	-5.30
7,000.00	26.08	91.36	6,983.84	-57.45	280.90	280.77	10.00	9.99	-1.29
7,100.00	36.07	90.75	7,069.37	-58.36	332.44	332.31	10.00	10.00	-0.61
7,200.00	46.07	90.38	7,144.67	-58.99	398.06	397.92	10.00	10.00	-0.37
7,300.00	56.07	90.12	7,207.42	-59.32	475.75	475.61	10.00	10.00	-0.26
7,400.00	66.07	89.92	7,255.74	-59.34	563.16	563.02	10.00	10.00	-0.21
7,500.00	76.07	89.74	7,288.14	-59.05	657.63	657.49	10.00	10.00	-0.18
7,600.00	86.07	89.58	7,303.65	-58.46	756.29	756.15	10.00	10.00	-0.16
7,639.35	90.00	89.51	7,305.00	-58.15	795.61	795.47	10.00	10.00	-0.16
Begin 90.00° lateral									
7,700.00	90.00	89.51	7,305.00	-57.64	856.25	856.12	0.00	0.00	0.00
7,800.00	90.00	89.51	7,305.00	-56.79	956.25	956.12	0.00	0.00	0.00
7,900.00	90.00	89.51	7,305.00	-55.94	1,056.25	1,056.12	0.00	0.00	0.00
8,000.00	90.00	89.51	7,305.00	-55.10	1,156.24	1,156.12	0.00	0.00	0.00
8,100.00	90.00	89.51	7,305.00	-54.25	1,256.24	1,256.11	0.00	0.00	0.00
8,200.00	90.00	89.51	7,305.00	-53.40	1,356.24	1,356.11	0.00	0.00	0.00
8,300.00	90.00	89.51	7,305.00	-52.55	1,456.23	1,456.11	0.00	0.00	0.00
8,400.00	90.00	89.51	7,305.00	-51.71	1,556.23	1,556.11	0.00	0.00	0.00
8,500.00	90.00	89.51	7,305.00	-50.86	1,656.23	1,656.11	0.00	0.00	0.00
8,600.00	90.00	89.51	7,305.00	-50.01	1,756.22	1,756.10	0.00	0.00	0.00
8,700.00	90.00	89.51	7,305.00	-49.17	1,856.22	1,856.10	0.00	0.00	0.00
8,800.00	90.00	89.51	7,305.00	-48.32	1,956.22	1,956.10	0.00	0.00	0.00
8,900.00	90.00	89.51	7,305.00	-47.47	2,056.21	2,056.10	0.00	0.00	0.00
9,000.00	90.00	89.51	7,305.00	-46.62	2,156.21	2,156.10	0.00	0.00	0.00
9,100.00	90.00	89.51	7,305.00	-45.78	2,256.20	2,256.10	0.00	0.00	0.00
9,200.00	90.00	89.51	7,305.00	-44.93	2,356.20	2,356.09	0.00	0.00	0.00
9,300.00	90.00	89.51	7,305.00	-44.08	2,456.20	2,456.09	0.00	0.00	0.00
9,400.00	90.00	89.51	7,305.00	-43.24	2,556.19	2,556.09	0.00	0.00	0.00
9,500.00	90.00	89.51	7,305.00	-42.39	2,656.19	2,656.09	0.00	0.00	0.00
9,600.00	90.00	89.51	7,305.00	-41.54	2,756.19	2,756.09	0.00	0.00	0.00
9,700.00	90.00	89.51	7,305.00	-40.70	2,856.18	2,856.08	0.00	0.00	0.00
9,800.00	90.00	89.51	7,305.00	-39.85	2,956.18	2,956.08	0.00	0.00	0.00
9,900.00	90.00	89.51	7,305.00	-39.00	3,056.18	3,056.08	0.00	0.00	0.00

Database:	DB_Jul2216dt_v14	Local Co-ordinate Reference:	Well Almont 5-02-04L
Company:	Confluence Resources	TVD Reference:	RKB=5001+24 @ 5025.00ft
Project:	Weld County, Colorado	MD Reference:	RKB=5001+24 @ 5025.00ft
Site:	Section 06-T07N-R64W	North Reference:	True
Well:	Almont 5-02-04L	Survey Calculation Method:	Minimum Curvature
Wellbore:	Original Hole		
Design:	plan1		

Planned Survey									
Measured Depth (ft)	Inclination (°)	Azimuth (°)	Vertical Depth (ft)	+N/-S (ft)	+E/-W (ft)	Vertical Section (ft)	Dogleg Rate (°/100ft)	Build Rate (°/100ft)	Turn Rate (°/100ft)
10,000.00	90.00	89.51	7,305.00	-38.15	3,156.17	3,156.08	0.00	0.00	0.00
10,100.00	90.00	89.51	7,305.00	-37.31	3,256.17	3,256.08	0.00	0.00	0.00
10,200.00	90.00	89.51	7,305.00	-36.46	3,356.17	3,356.07	0.00	0.00	0.00
10,300.00	90.00	89.51	7,305.00	-35.61	3,456.16	3,456.07	0.00	0.00	0.00
10,400.00	90.00	89.51	7,305.00	-34.77	3,556.16	3,556.07	0.00	0.00	0.00
10,500.00	90.00	89.51	7,305.00	-33.92	3,656.15	3,656.07	0.00	0.00	0.00
10,600.00	90.00	89.51	7,305.00	-33.07	3,756.15	3,756.07	0.00	0.00	0.00
10,700.00	90.00	89.51	7,305.00	-32.23	3,856.15	3,856.06	0.00	0.00	0.00
10,800.00	90.00	89.51	7,305.00	-31.38	3,956.14	3,956.06	0.00	0.00	0.00
10,900.00	90.00	89.51	7,305.00	-30.53	4,056.14	4,056.06	0.00	0.00	0.00
11,000.00	90.00	89.51	7,305.00	-29.68	4,156.14	4,156.06	0.00	0.00	0.00
11,100.00	90.00	89.51	7,305.00	-28.84	4,256.13	4,256.06	0.00	0.00	0.00
11,200.00	90.00	89.51	7,305.00	-27.99	4,356.13	4,356.05	0.00	0.00	0.00
11,300.00	90.00	89.51	7,305.00	-27.14	4,456.13	4,456.05	0.00	0.00	0.00
11,400.00	90.00	89.51	7,305.00	-26.30	4,556.12	4,556.05	0.00	0.00	0.00
11,500.00	90.00	89.51	7,305.00	-25.45	4,656.12	4,656.05	0.00	0.00	0.00
11,600.00	90.00	89.51	7,305.00	-24.60	4,756.11	4,756.05	0.00	0.00	0.00
11,700.00	90.00	89.51	7,305.00	-23.76	4,856.11	4,856.05	0.00	0.00	0.00
11,800.00	90.00	89.51	7,305.00	-22.91	4,956.11	4,956.04	0.00	0.00	0.00
11,900.00	90.00	89.51	7,305.00	-22.06	5,056.10	5,056.04	0.00	0.00	0.00
12,000.00	90.00	89.51	7,305.00	-21.21	5,156.10	5,156.04	0.00	0.00	0.00
12,100.00	90.00	89.51	7,305.00	-20.37	5,256.10	5,256.04	0.00	0.00	0.00
12,200.00	90.00	89.51	7,305.00	-19.52	5,356.09	5,356.04	0.00	0.00	0.00
12,300.00	90.00	89.51	7,305.00	-18.67	5,456.09	5,456.03	0.00	0.00	0.00
12,400.00	90.00	89.51	7,305.00	-17.83	5,556.09	5,556.03	0.00	0.00	0.00
12,500.00	90.00	89.51	7,305.00	-16.98	5,656.08	5,656.03	0.00	0.00	0.00
12,600.00	90.00	89.51	7,305.00	-16.13	5,756.08	5,756.03	0.00	0.00	0.00
12,700.00	90.00	89.51	7,305.00	-15.29	5,856.08	5,856.03	0.00	0.00	0.00
12,800.00	90.00	89.51	7,305.00	-14.44	5,956.07	5,956.02	0.00	0.00	0.00
12,900.00	90.00	89.51	7,305.00	-13.59	6,056.07	6,056.02	0.00	0.00	0.00
13,000.00	90.00	89.51	7,305.00	-12.74	6,156.06	6,156.02	0.00	0.00	0.00
13,100.00	90.00	89.51	7,305.00	-11.90	6,256.06	6,256.02	0.00	0.00	0.00
13,200.00	90.00	89.51	7,305.00	-11.05	6,356.06	6,356.02	0.00	0.00	0.00
13,300.00	90.00	89.51	7,305.00	-10.20	6,456.05	6,456.01	0.00	0.00	0.00
13,400.00	90.00	89.51	7,305.00	-9.36	6,556.05	6,556.01	0.00	0.00	0.00
13,500.00	90.00	89.51	7,305.00	-8.51	6,656.05	6,656.01	0.00	0.00	0.00
13,600.00	90.00	89.51	7,305.00	-7.66	6,756.04	6,756.01	0.00	0.00	0.00
13,700.00	90.00	89.51	7,305.00	-6.82	6,856.04	6,856.01	0.00	0.00	0.00
13,800.00	90.00	89.51	7,305.00	-5.97	6,956.04	6,956.00	0.00	0.00	0.00
13,900.00	90.00	89.51	7,305.00	-5.12	7,056.03	7,056.00	0.00	0.00	0.00
14,000.00	90.00	89.51	7,305.00	-4.27	7,156.03	7,156.00	0.00	0.00	0.00
14,100.00	90.00	89.51	7,305.00	-3.43	7,256.03	7,256.00	0.00	0.00	0.00
14,200.00	90.00	89.51	7,305.00	-2.58	7,356.02	7,356.00	0.00	0.00	0.00
14,300.00	90.00	89.51	7,305.00	-1.73	7,456.02	7,456.00	0.00	0.00	0.00
14,400.00	90.00	89.51	7,305.00	-0.89	7,556.01	7,555.99	0.00	0.00	0.00
14,500.00	90.00	89.51	7,305.00	-0.04	7,656.01	7,655.99	0.00	0.00	0.00
14,600.00	90.00	89.51	7,305.00	0.81	7,756.01	7,755.99	0.00	0.00	0.00
14,700.00	90.00	89.51	7,305.00	1.65	7,856.00	7,855.99	0.00	0.00	0.00
14,800.00	90.00	89.51	7,305.00	2.50	7,956.00	7,955.99	0.00	0.00	0.00
14,900.00	90.00	89.51	7,305.00	3.35	8,056.00	8,055.98	0.00	0.00	0.00
15,000.00	90.00	89.51	7,305.00	4.20	8,155.99	8,155.98	0.00	0.00	0.00
15,100.00	90.00	89.51	7,305.00	5.04	8,255.99	8,255.98	0.00	0.00	0.00
15,200.00	90.00	89.51	7,305.00	5.89	8,355.99	8,355.98	0.00	0.00	0.00
15,300.00	90.00	89.51	7,305.00	6.74	8,455.98	8,455.98	0.00	0.00	0.00

Database:	DB_Jul2216dt_v14	Local Co-ordinate Reference:	Well Almont 5-02-04L
Company:	Confluence Resources	TVD Reference:	RKB=5001+24 @ 5025.00ft
Project:	Weld County, Colorado	MD Reference:	RKB=5001+24 @ 5025.00ft
Site:	Section 06-T07N-R64W	North Reference:	True
Well:	Almont 5-02-04L	Survey Calculation Method:	Minimum Curvature
Wellbore:	Original Hole		
Design:	plan1		

Planned Survey										
Measured Depth (ft)	Inclination (°)	Azimuth (°)	Vertical Depth (ft)	+N/-S (ft)	+E/-W (ft)	Vertical Section (ft)	Dogleg Rate (°/100ft)	Build Rate (°/100ft)	Turn Rate (°/100ft)	
15,400.00	90.00	89.51	7,305.00	7.58	8,555.98	8,555.97	0.00	0.00	0.00	
15,500.00	90.00	89.51	7,305.00	8.43	8,655.98	8,655.97	0.00	0.00	0.00	
15,600.00	90.00	89.51	7,305.00	9.28	8,755.97	8,755.97	0.00	0.00	0.00	
15,700.00	90.00	89.51	7,305.00	10.12	8,855.97	8,855.97	0.00	0.00	0.00	
15,800.00	90.00	89.51	7,305.00	10.97	8,955.96	8,955.97	0.00	0.00	0.00	
15,900.00	90.00	89.51	7,305.00	11.82	9,055.96	9,055.96	0.00	0.00	0.00	
16,000.00	90.00	89.51	7,305.00	12.67	9,155.96	9,155.96	0.00	0.00	0.00	
16,100.00	90.00	89.51	7,305.00	13.51	9,255.95	9,255.96	0.00	0.00	0.00	
16,200.00	90.00	89.51	7,305.00	14.36	9,355.95	9,355.96	0.00	0.00	0.00	
16,300.00	90.00	89.51	7,305.00	15.21	9,455.95	9,455.96	0.00	0.00	0.00	
16,400.00	90.00	89.51	7,305.00	16.05	9,555.94	9,555.95	0.00	0.00	0.00	
16,500.00	90.00	89.51	7,305.00	16.90	9,655.94	9,655.95	0.00	0.00	0.00	
16,600.00	90.00	89.51	7,305.00	17.75	9,755.94	9,755.95	0.00	0.00	0.00	
16,700.00	90.00	89.51	7,305.00	18.59	9,855.93	9,855.95	0.00	0.00	0.00	
16,800.00	90.00	89.51	7,305.00	19.44	9,955.93	9,955.95	0.00	0.00	0.00	
16,900.00	90.00	89.51	7,305.00	20.29	10,055.92	10,055.95	0.00	0.00	0.00	
17,000.00	90.00	89.51	7,305.00	21.14	10,155.92	10,155.94	0.00	0.00	0.00	
17,100.00	90.00	89.51	7,305.00	21.98	10,255.92	10,255.94	0.00	0.00	0.00	
17,200.00	90.00	89.51	7,305.00	22.83	10,355.91	10,355.94	0.00	0.00	0.00	
17,295.62	90.00	89.51	7,305.00	23.64	10,451.53	10,451.56	0.00	0.00	0.00	
PBHL/TD 17295.62 MD/7305.00 TVD										

Design Targets										
Target Name	Dip Angle (°)	Dip Dir. (°)	TVD (ft)	+N/-S (ft)	+E/-W (ft)	Northing (usft)	Easting (usft)	Latitude		Longitude
- hit/miss target										
- Shape										
Almont 5-02-04L PBHL 1	0.00	0.00	7,305.00	23.64	10,451.53	14,747,673.75	1,766,305.94	40.60582232		-104.54644435
- plan hits target center										
- Point										
Almont 5-02-04L LP 129	0.00	0.00	7,305.00	-58.15	795.61	14,747,546.34	1,756,650.53	40.60560384		-104.58123226
- plan hits target center										
- Point										

Plan Annotations					
Measured Depth (ft)	Vertical Depth (ft)	Local Coordinates			
		+N/-S (ft)	+E/-W (ft)	Comment	
3,000.00	3,000.00	0.00	0.00	KOP Begin 1°/100' build	
3,367.61	3,367.36	-2.79	11.45	Begin 3.68° tangent	
6,774.99	6,767.72	-54.53	223.70	Begin 10°/100' build/turn	
7,639.35	7,305.00	-58.15	795.61	Begin 90.00° lateral	
17,295.62	7,305.00	23.64	10,451.53	PBHL/TD 17295.62 MD/7305.00 TVD	

Database:	DB_Jul2216dt_v14	Local Co-ordinate Reference:	Well Almont 5-02-04L
Company:	Confluence Resources	TVD Reference:	RKB=5001+24 @ 5025.00ft
Project:	Weld County, Colorado	MD Reference:	RKB=5001+24 @ 5025.00ft
Site:	Section 06-T07N-R64W	North Reference:	True
Well:	Almont 5-02-04L	Survey Calculation Method:	Minimum Curvature
Wellbore:	Original Hole		
Design:	plan1		

Project	Weld County, Colorado		
Map System:	Universal Transverse Mercator (US Survey Feet)	System Datum:	Mean Sea Level
Geo Datum:	NAD83 Colorado - HARN		
Map Zone:	Zone 13N (108 W to 102 W)		

Site		Section 06-T07N-R64W			
Site Position:		Northing:	14,746,184.54 usft	Latitude:	40.60187654
From:	Map	Easting:	1,755,730.03 usft	Longitude:	-104.58457171
Position Uncertainty:	0.00 ft	Slot Radius:	13-3/16 "	Grid Convergence:	0.27 °

Well	Almont 5-02-04L, Surf loc: 1222 FNL 325 FEL Section 06-T08N-R64W					
Well Position	+N/-S	0.00 ft	Northing:	14,747,600.73 usft	Latitude:	40.60576354
	+E/-W	0.00 ft	Easting:	1,755,854.66 usft	Longitude:	-104.58409862
Position Uncertainty		0.00 ft	Wellhead Elevation:		Ground Level:	5,001.00 ft

Wellbore	Original Hole				
Magnetics	Model Name	Sample Date	Declination (°)	Dip Angle (°)	Field Strength (nT)
	HDGM	2/22/2018	8.00	66.98	52,363.10000000

Design	plan1			
Audit Notes:				
Version:	Phase:	PLAN	Tie On Depth:	0.00
Vertical Section:	Depth From (TVD) (ft)	+N/-S (ft)	+E/-W (ft)	Direction (°)
	0.00	0.00	0.00	89.87

Plan Survey Tool Program	Date	2/22/2018		
Depth From (ft)	Depth To (ft)	Survey (Wellbore)	Tool Name	Remarks
1	0.00	17,295.62 plan1 (Original Hole)		

Plan Sections										
Measured Depth (ft)	Inclination (°)	Azimuth (°)	Vertical Depth (ft)	+N/-S (ft)	+E/-W (ft)	Dogleg Rate (°/100ft)	Build Rate (°/100ft)	Turn Rate (°/100ft)	TFO (°)	Target
0.00	0.00	0.00	0.00	0.00	0.00	0.00	0.00	0.00	0.00	
3,000.00	0.00	0.00	3,000.00	0.00	0.00	0.00	0.00	0.00	0.00	
3,367.61	3.68	103.70	3,367.36	-2.79	11.45	1.00	1.00	0.00	103.70	
6,774.99	3.68	103.70	6,767.72	-54.53	223.70	0.00	0.00	0.00	0.00	
7,639.35	90.00	89.51	7,305.00	-58.15	795.61	10.00	9.99	-1.64	-14.21	Almont 5-02-04L LP 1
17,295.62	90.00	89.51	7,305.00	23.64	10,451.53	0.00	0.00	0.00	0.00	Almont 5-02-04L PBH

Database:	DB_Jul2216dt_v14	Local Co-ordinate Reference:	Well Almont 5-02-04L
Company:	Confluence Resources	TVD Reference:	RKB=5001+24 @ 5025.00ft
Project:	Weld County, Colorado	MD Reference:	RKB=5001+24 @ 5025.00ft
Site:	Section 06-T07N-R64W	North Reference:	True
Well:	Almont 5-02-04L	Survey Calculation Method:	Minimum Curvature
Wellbore:	Original Hole		
Design:	plan1		

Planned Survey									
Measured Depth (ft)	Inclination (°)	Azimuth (°)	Vertical Depth (ft)	+N/-S (ft)	+E/-W (ft)	Map Northing (usft)	Map Easting (usft)	Latitude	Longitude
0.00	0.00	0.00	0.00	0.00	0.00	14,747,600.73	1,755,854.66	40.60576354	-104.58409862
100.00	0.00	0.00	100.00	0.00	0.00	14,747,600.73	1,755,854.66	40.60576354	-104.58409862
200.00	0.00	0.00	200.00	0.00	0.00	14,747,600.73	1,755,854.66	40.60576354	-104.58409862
300.00	0.00	0.00	300.00	0.00	0.00	14,747,600.73	1,755,854.66	40.60576354	-104.58409862
400.00	0.00	0.00	400.00	0.00	0.00	14,747,600.73	1,755,854.66	40.60576354	-104.58409862
500.00	0.00	0.00	500.00	0.00	0.00	14,747,600.73	1,755,854.66	40.60576354	-104.58409862
600.00	0.00	0.00	600.00	0.00	0.00	14,747,600.73	1,755,854.66	40.60576354	-104.58409862
700.00	0.00	0.00	700.00	0.00	0.00	14,747,600.73	1,755,854.66	40.60576354	-104.58409862
800.00	0.00	0.00	800.00	0.00	0.00	14,747,600.73	1,755,854.66	40.60576354	-104.58409862
900.00	0.00	0.00	900.00	0.00	0.00	14,747,600.73	1,755,854.66	40.60576354	-104.58409862
1,000.00	0.00	0.00	1,000.00	0.00	0.00	14,747,600.73	1,755,854.66	40.60576354	-104.58409862
1,100.00	0.00	0.00	1,100.00	0.00	0.00	14,747,600.73	1,755,854.66	40.60576354	-104.58409862
1,200.00	0.00	0.00	1,200.00	0.00	0.00	14,747,600.73	1,755,854.66	40.60576354	-104.58409862
1,300.00	0.00	0.00	1,300.00	0.00	0.00	14,747,600.73	1,755,854.66	40.60576354	-104.58409862
1,400.00	0.00	0.00	1,400.00	0.00	0.00	14,747,600.73	1,755,854.66	40.60576354	-104.58409862
1,500.00	0.00	0.00	1,500.00	0.00	0.00	14,747,600.73	1,755,854.66	40.60576354	-104.58409862
1,600.00	0.00	0.00	1,600.00	0.00	0.00	14,747,600.73	1,755,854.66	40.60576354	-104.58409862
1,700.00	0.00	0.00	1,700.00	0.00	0.00	14,747,600.73	1,755,854.66	40.60576354	-104.58409862
1,800.00	0.00	0.00	1,800.00	0.00	0.00	14,747,600.73	1,755,854.66	40.60576354	-104.58409862
1,900.00	0.00	0.00	1,900.00	0.00	0.00	14,747,600.73	1,755,854.66	40.60576354	-104.58409862
2,000.00	0.00	0.00	2,000.00	0.00	0.00	14,747,600.73	1,755,854.66	40.60576354	-104.58409862
2,100.00	0.00	0.00	2,100.00	0.00	0.00	14,747,600.73	1,755,854.66	40.60576354	-104.58409862
2,200.00	0.00	0.00	2,200.00	0.00	0.00	14,747,600.73	1,755,854.66	40.60576354	-104.58409862
2,300.00	0.00	0.00	2,300.00	0.00	0.00	14,747,600.73	1,755,854.66	40.60576354	-104.58409862
2,400.00	0.00	0.00	2,400.00	0.00	0.00	14,747,600.73	1,755,854.66	40.60576354	-104.58409862
2,500.00	0.00	0.00	2,500.00	0.00	0.00	14,747,600.73	1,755,854.66	40.60576354	-104.58409862
2,600.00	0.00	0.00	2,600.00	0.00	0.00	14,747,600.73	1,755,854.66	40.60576354	-104.58409862
2,700.00	0.00	0.00	2,700.00	0.00	0.00	14,747,600.73	1,755,854.66	40.60576354	-104.58409862
2,800.00	0.00	0.00	2,800.00	0.00	0.00	14,747,600.73	1,755,854.66	40.60576354	-104.58409862
2,900.00	0.00	0.00	2,900.00	0.00	0.00	14,747,600.73	1,755,854.66	40.60576354	-104.58409862
3,000.00	0.00	0.00	3,000.00	0.00	0.00	14,747,600.73	1,755,854.66	40.60576354	-104.58409862
KOP Begin 1°/100' build									
3,100.00	1.00	103.70	3,099.99	-0.21	0.85	14,747,600.53	1,755,855.51	40.60576298	-104.58409557
3,200.00	2.00	103.70	3,199.96	-0.83	3.39	14,747,599.92	1,755,858.05	40.60576127	-104.58408641
3,300.00	3.00	103.70	3,299.86	-1.86	7.63	14,747,598.91	1,755,862.30	40.60575844	-104.58407114
3,367.61	3.68	103.70	3,367.36	-2.79	11.45	14,747,597.99	1,755,866.13	40.60575588	-104.58405736
Begin 3.68° tangent									
3,400.00	3.68	103.70	3,399.68	-3.28	13.47	14,747,597.51	1,755,868.15	40.60575453	-104.58405009
3,500.00	3.68	103.70	3,499.48	-4.80	19.70	14,747,596.02	1,755,874.38	40.60575036	-104.58402765
3,600.00	3.68	103.70	3,599.27	-6.32	25.93	14,747,594.53	1,755,880.62	40.60574619	-104.58400521
3,700.00	3.68	103.70	3,699.06	-7.84	32.16	14,747,593.04	1,755,886.85	40.60574202	-104.58398276
3,800.00	3.68	103.70	3,798.86	-9.36	38.39	14,747,591.55	1,755,893.09	40.60573785	-104.58396032
3,900.00	3.68	103.70	3,898.65	-10.88	44.62	14,747,590.06	1,755,899.33	40.60573368	-104.58393788
4,000.00	3.68	103.70	3,998.45	-12.40	50.85	14,747,588.57	1,755,905.56	40.60572951	-104.58391544
4,100.00	3.68	103.70	4,098.24	-13.91	57.08	14,747,587.09	1,755,911.80	40.60572534	-104.58389300
4,200.00	3.68	103.70	4,198.04	-15.43	63.30	14,747,585.60	1,755,918.04	40.60572117	-104.58387055
4,300.00	3.68	103.70	4,297.83	-16.95	69.53	14,747,584.11	1,755,924.27	40.60571700	-104.58384811
4,400.00	3.68	103.70	4,397.62	-18.47	75.76	14,747,582.62	1,755,930.51	40.60571283	-104.58382567
4,500.00	3.68	103.70	4,497.42	-19.99	81.99	14,747,581.13	1,755,936.74	40.60570866	-104.58380323
4,600.00	3.68	103.70	4,597.21	-21.51	88.22	14,747,579.64	1,755,942.98	40.60570449	-104.58378078
4,700.00	3.68	103.70	4,697.01	-23.02	94.45	14,747,578.15	1,755,949.22	40.60570032	-104.58375834
4,800.00	3.68	103.70	4,796.80	-24.54	100.68	14,747,576.66	1,755,955.45	40.60569615	-104.58373590
4,900.00	3.68	103.70	4,896.59	-26.06	106.91	14,747,575.17	1,755,961.69	40.60569198	-104.58371346
5,000.00	3.68	103.70	4,996.39	-27.58	113.14	14,747,573.68	1,755,967.93	40.60568781	-104.58369102

Database:	DB_Jul2216dt_v14	Local Co-ordinate Reference:	Well Almont 5-02-04L
Company:	Confluence Resources	TVD Reference:	RKB=5001+24 @ 5025.00ft
Project:	Weld County, Colorado	MD Reference:	RKB=5001+24 @ 5025.00ft
Site:	Section 06-T07N-R64W	North Reference:	True
Well:	Almont 5-02-04L	Survey Calculation Method:	Minimum Curvature
Wellbore:	Original Hole		
Design:	plan1		

Planned Survey									
Measured Depth (ft)	Inclination (°)	Azimuth (°)	Vertical Depth (ft)	+N/-S (ft)	+E/-W (ft)	Map Northing (usft)	Map Easting (usft)	Latitude	Longitude
5,100.00	3.68	103.70	5,096.18	-29.10	119.37	14,747,572.19	1,755,974.16	40.60568364	-104.58366857
5,200.00	3.68	103.70	5,195.98	-30.62	125.60	14,747,570.71	1,755,980.40	40.60567947	-104.58364613
5,300.00	3.68	103.70	5,295.77	-32.14	131.83	14,747,569.22	1,755,986.63	40.60567530	-104.58362369
5,400.00	3.68	103.70	5,395.57	-33.65	138.05	14,747,567.73	1,755,992.87	40.60567113	-104.58360125
5,500.00	3.68	103.70	5,495.36	-35.17	144.28	14,747,566.24	1,755,999.11	40.60566696	-104.58357881
5,600.00	3.68	103.70	5,595.15	-36.69	150.51	14,747,564.75	1,756,005.34	40.60566279	-104.58355636
5,700.00	3.68	103.70	5,694.95	-38.21	156.74	14,747,563.26	1,756,011.58	40.60565862	-104.58353392
5,800.00	3.68	103.70	5,794.74	-39.73	162.97	14,747,561.77	1,756,017.82	40.60565445	-104.58351148
5,900.00	3.68	103.70	5,894.54	-41.25	169.20	14,747,560.28	1,756,024.05	40.60565028	-104.58348904
6,000.00	3.68	103.70	5,994.33	-42.77	175.43	14,747,558.79	1,756,030.29	40.60564611	-104.58346660
6,100.00	3.68	103.70	6,094.13	-44.28	181.66	14,747,557.30	1,756,036.52	40.60564194	-104.58344415
6,200.00	3.68	103.70	6,193.92	-45.80	187.89	14,747,555.81	1,756,042.76	40.60563777	-104.58342171
6,300.00	3.68	103.70	6,293.71	-47.32	194.12	14,747,554.33	1,756,049.00	40.60563360	-104.58339927
6,400.00	3.68	103.70	6,393.51	-48.84	200.35	14,747,552.84	1,756,055.23	40.60562943	-104.58337683
6,500.00	3.68	103.70	6,493.30	-50.36	206.58	14,747,551.35	1,756,061.47	40.60562526	-104.58335438
6,600.00	3.68	103.70	6,593.10	-51.88	212.80	14,747,549.86	1,756,067.71	40.60562109	-104.58333194
6,700.00	3.68	103.70	6,692.89	-53.40	219.03	14,747,548.37	1,756,073.94	40.60561692	-104.58330950
6,774.99	3.68	103.70	6,767.72	-54.53	223.70	14,747,547.25	1,756,078.62	40.60561380	-104.58329267
Begin 10°/100' build/turn									
6,800.00	6.13	97.94	6,792.64	-54.91	225.81	14,747,546.89	1,756,080.72	40.60561277	-104.58328510
6,900.00	16.09	92.64	6,890.65	-56.29	244.99	14,747,545.60	1,756,099.91	40.60560898	-104.58321600
7,000.00	26.08	91.36	6,983.84	-57.45	280.90	14,747,544.60	1,756,135.82	40.60560578	-104.58308663
7,100.00	36.07	90.75	7,069.37	-58.36	332.44	14,747,543.94	1,756,187.37	40.60560328	-104.58290092
7,200.00	46.07	90.38	7,144.67	-58.99	398.06	14,747,543.62	1,756,252.99	40.60560155	-104.58266452
7,300.00	56.07	90.12	7,207.42	-59.32	475.75	14,747,543.66	1,756,330.68	40.60560064	-104.58238462
7,400.00	66.07	89.92	7,255.74	-59.34	563.16	14,747,544.05	1,756,418.09	40.60560058	-104.58206970
7,500.00	76.07	89.74	7,288.14	-59.05	657.63	14,747,544.78	1,756,512.56	40.60560137	-104.58172935
7,600.00	86.07	89.58	7,303.65	-58.46	756.29	14,747,545.84	1,756,611.21	40.60560298	-104.58137391
7,639.35	90.00	89.51	7,305.00	-58.15	795.61	14,747,546.34	1,756,650.53	40.60560384	-104.58123226
Begin 90.00° lateral									
7,700.00	90.00	89.51	7,305.00	-57.64	856.25	14,747,547.14	1,756,711.18	40.60560524	-104.58101376
7,800.00	90.00	89.51	7,305.00	-56.79	956.25	14,747,548.46	1,756,811.17	40.60560756	-104.58065349
7,900.00	90.00	89.51	7,305.00	-55.94	1,056.25	14,747,549.78	1,756,911.16	40.60560987	-104.58029323
8,000.00	90.00	89.51	7,305.00	-55.10	1,156.24	14,747,551.10	1,757,011.15	40.60561219	-104.57993297
8,100.00	90.00	89.51	7,305.00	-54.25	1,256.24	14,747,552.42	1,757,111.14	40.60561450	-104.57957271
8,200.00	90.00	89.51	7,305.00	-53.40	1,356.24	14,747,553.74	1,757,211.13	40.60561681	-104.57921245
8,300.00	90.00	89.51	7,305.00	-52.55	1,456.23	14,747,555.06	1,757,311.12	40.60561912	-104.57885218
8,400.00	90.00	89.51	7,305.00	-51.71	1,556.23	14,747,556.38	1,757,411.11	40.60562143	-104.57849192
8,500.00	90.00	89.51	7,305.00	-50.86	1,656.23	14,747,557.70	1,757,511.10	40.60562374	-104.57813166
8,600.00	90.00	89.51	7,305.00	-50.01	1,756.22	14,747,559.01	1,757,611.09	40.60562604	-104.57777140
8,700.00	90.00	89.51	7,305.00	-49.17	1,856.22	14,747,560.33	1,757,711.09	40.60562835	-104.57741114
8,800.00	90.00	89.51	7,305.00	-48.32	1,956.22	14,747,561.65	1,757,811.08	40.60563065	-104.57705088
8,900.00	90.00	89.51	7,305.00	-47.47	2,056.21	14,747,562.97	1,757,911.07	40.60563296	-104.57669061
9,000.00	90.00	89.51	7,305.00	-46.62	2,156.21	14,747,564.29	1,758,011.06	40.60563526	-104.57633035
9,100.00	90.00	89.51	7,305.00	-45.78	2,256.20	14,747,565.61	1,758,111.05	40.60563756	-104.57597009
9,200.00	90.00	89.51	7,305.00	-44.93	2,356.20	14,747,566.93	1,758,211.04	40.60563986	-104.57560983
9,300.00	90.00	89.51	7,305.00	-44.08	2,456.20	14,747,568.25	1,758,311.03	40.60564216	-104.57524957
9,400.00	90.00	89.51	7,305.00	-43.24	2,556.19	14,747,569.57	1,758,411.02	40.60564446	-104.57488930
9,500.00	90.00	89.51	7,305.00	-42.39	2,656.19	14,747,570.89	1,758,511.01	40.60564675	-104.57452904
9,600.00	90.00	89.51	7,305.00	-41.54	2,756.19	14,747,572.21	1,758,611.01	40.60564905	-104.57416878
9,700.00	90.00	89.51	7,305.00	-40.70	2,856.18	14,747,573.53	1,758,711.00	40.60565134	-104.57380852
9,800.00	90.00	89.51	7,305.00	-39.85	2,956.18	14,747,574.85	1,758,810.99	40.60565364	-104.57344826
9,900.00	90.00	89.51	7,305.00	-39.00	3,056.18	14,747,576.17	1,758,910.98	40.60565593	-104.57308799
10,000.00	90.00	89.51	7,305.00	-38.15	3,156.17	14,747,577.49	1,759,010.97	40.60565822	-104.57272773

Database:	DB_Jul2216dt_v14	Local Co-ordinate Reference:	Well Almont 5-02-04L
Company:	Confluence Resources	TVD Reference:	RKB=5001+24 @ 5025.00ft
Project:	Weld County, Colorado	MD Reference:	RKB=5001+24 @ 5025.00ft
Site:	Section 06-T07N-R64W	North Reference:	True
Well:	Almont 5-02-04L	Survey Calculation Method:	Minimum Curvature
Wellbore:	Original Hole		
Design:	plan1		

Planned Survey									
Measured Depth (ft)	Inclination (°)	Azimuth (°)	Vertical Depth (ft)	+N/-S (ft)	+E/-W (ft)	Map Northing (usft)	Map Easting (usft)	Latitude	Longitude
10,100.00	90.00	89.51	7,305.00	-37.31	3,256.17	14,747,578.81	1,759,110.96	40.60566051	-104.57236747
10,200.00	90.00	89.51	7,305.00	-36.46	3,356.17	14,747,580.13	1,759,210.95	40.60566280	-104.57200721
10,300.00	90.00	89.51	7,305.00	-35.61	3,456.16	14,747,581.45	1,759,310.94	40.60566508	-104.57164695
10,400.00	90.00	89.51	7,305.00	-34.77	3,556.16	14,747,582.77	1,759,410.93	40.60566737	-104.57128668
10,500.00	90.00	89.51	7,305.00	-33.92	3,656.15	14,747,584.08	1,759,510.93	40.60566966	-104.57092642
10,600.00	90.00	89.51	7,305.00	-33.07	3,756.15	14,747,585.40	1,759,610.92	40.60567194	-104.57056616
10,700.00	90.00	89.51	7,305.00	-32.23	3,856.15	14,747,586.72	1,759,710.91	40.60567422	-104.57020590
10,800.00	90.00	89.51	7,305.00	-31.38	3,956.14	14,747,588.04	1,759,810.90	40.60567651	-104.56984563
10,900.00	90.00	89.51	7,305.00	-30.53	4,056.14	14,747,589.36	1,759,910.89	40.60567879	-104.56948537
11,000.00	90.00	89.51	7,305.00	-29.68	4,156.14	14,747,590.68	1,760,010.88	40.60568107	-104.56912511
11,100.00	90.00	89.51	7,305.00	-28.84	4,256.13	14,747,592.00	1,760,110.87	40.60568334	-104.56876485
11,200.00	90.00	89.51	7,305.00	-27.99	4,356.13	14,747,593.32	1,760,210.86	40.60568562	-104.56840459
11,300.00	90.00	89.51	7,305.00	-27.14	4,456.13	14,747,594.64	1,760,310.85	40.60568790	-104.56804432
11,400.00	90.00	89.51	7,305.00	-26.30	4,556.12	14,747,595.96	1,760,410.85	40.60569017	-104.56768406
11,500.00	90.00	89.51	7,305.00	-25.45	4,656.12	14,747,597.28	1,760,510.84	40.60569245	-104.56732380
11,600.00	90.00	89.51	7,305.00	-24.60	4,756.11	14,747,598.60	1,760,610.83	40.60569472	-104.56696354
11,700.00	90.00	89.51	7,305.00	-23.76	4,856.11	14,747,599.92	1,760,710.82	40.60569699	-104.56660327
11,800.00	90.00	89.51	7,305.00	-22.91	4,956.11	14,747,601.24	1,760,810.81	40.60569926	-104.56624301
11,900.00	90.00	89.51	7,305.00	-22.06	5,056.10	14,747,602.56	1,760,910.80	40.60570153	-104.56588275
12,000.00	90.00	89.51	7,305.00	-21.21	5,156.10	14,747,603.88	1,761,010.79	40.60570380	-104.56552249
12,100.00	90.00	89.51	7,305.00	-20.37	5,256.10	14,747,605.20	1,761,110.78	40.60570607	-104.56516223
12,200.00	90.00	89.51	7,305.00	-19.52	5,356.09	14,747,606.52	1,761,210.77	40.60570833	-104.56480196
12,300.00	90.00	89.51	7,305.00	-18.67	5,456.09	14,747,607.83	1,761,310.77	40.60571060	-104.56444170
12,400.00	90.00	89.51	7,305.00	-17.83	5,556.09	14,747,609.15	1,761,410.76	40.60571286	-104.56408144
12,500.00	90.00	89.51	7,305.00	-16.98	5,656.08	14,747,610.47	1,761,510.75	40.60571513	-104.56372118
12,600.00	90.00	89.51	7,305.00	-16.13	5,756.08	14,747,611.79	1,761,610.74	40.60571739	-104.56336091
12,700.00	90.00	89.51	7,305.00	-15.29	5,856.08	14,747,613.11	1,761,710.73	40.60571965	-104.56300065
12,800.00	90.00	89.51	7,305.00	-14.44	5,956.07	14,747,614.43	1,761,810.72	40.60572191	-104.56264039
12,900.00	90.00	89.51	7,305.00	-13.59	6,056.07	14,747,615.75	1,761,910.71	40.60572417	-104.56228013
13,000.00	90.00	89.51	7,305.00	-12.74	6,156.06	14,747,617.07	1,762,010.70	40.60572642	-104.56191986
13,100.00	90.00	89.51	7,305.00	-11.90	6,256.06	14,747,618.39	1,762,110.69	40.60572868	-104.56155960
13,200.00	90.00	89.51	7,305.00	-11.05	6,356.06	14,747,619.71	1,762,210.69	40.60573093	-104.56119934
13,300.00	90.00	89.51	7,305.00	-10.20	6,456.05	14,747,621.03	1,762,310.68	40.60573319	-104.56083908
13,400.00	90.00	89.51	7,305.00	-9.36	6,556.05	14,747,622.35	1,762,410.67	40.60573544	-104.56047881
13,500.00	90.00	89.51	7,305.00	-8.51	6,656.05	14,747,623.67	1,762,510.66	40.60573769	-104.56011855
13,600.00	90.00	89.51	7,305.00	-7.66	6,756.04	14,747,624.99	1,762,610.65	40.60573994	-104.55975829
13,700.00	90.00	89.51	7,305.00	-6.82	6,856.04	14,747,626.31	1,762,710.64	40.60574219	-104.55939803
13,800.00	90.00	89.51	7,305.00	-5.97	6,956.04	14,747,627.63	1,762,810.63	40.60574444	-104.55903776
13,900.00	90.00	89.51	7,305.00	-5.12	7,056.03	14,747,628.95	1,762,910.62	40.60574669	-104.55867750
14,000.00	90.00	89.51	7,305.00	-4.27	7,156.03	14,747,630.27	1,763,010.61	40.60574893	-104.55831724
14,100.00	90.00	89.51	7,305.00	-3.43	7,256.03	14,747,631.58	1,763,110.61	40.60575118	-104.55795697
14,200.00	90.00	89.51	7,305.00	-2.58	7,356.02	14,747,632.90	1,763,210.60	40.60575342	-104.55759671
14,300.00	90.00	89.51	7,305.00	-1.73	7,456.02	14,747,634.22	1,763,310.59	40.60575567	-104.55723645
14,400.00	90.00	89.51	7,305.00	-0.89	7,556.01	14,747,635.54	1,763,410.58	40.60575791	-104.55687619
14,500.00	90.00	89.51	7,305.00	-0.04	7,656.01	14,747,636.86	1,763,510.57	40.60576015	-104.55651592
14,600.00	90.00	89.51	7,305.00	0.81	7,756.01	14,747,638.18	1,763,610.56	40.60576239	-104.55615566
14,700.00	90.00	89.51	7,305.00	1.65	7,856.00	14,747,639.50	1,763,710.55	40.60576462	-104.55579540
14,800.00	90.00	89.51	7,305.00	2.50	7,956.00	14,747,640.82	1,763,810.54	40.60576686	-104.55543514
14,900.00	90.00	89.51	7,305.00	3.35	8,056.00	14,747,642.14	1,763,910.53	40.60576910	-104.55507487
15,000.00	90.00	89.51	7,305.00	4.20	8,155.99	14,747,643.46	1,764,010.53	40.60577133	-104.55471461
15,100.00	90.00	89.51	7,305.00	5.04	8,255.99	14,747,644.78	1,764,110.52	40.60577357	-104.55435435
15,200.00	90.00	89.51	7,305.00	5.89	8,355.99	14,747,646.10	1,764,210.51	40.60577580	-104.55399408
15,300.00	90.00	89.51	7,305.00	6.74	8,455.98	14,747,647.42	1,764,310.50	40.60577803	-104.55363382
15,400.00	90.00	89.51	7,305.00	7.58	8,555.98	14,747,648.74	1,764,410.49	40.60578026	-104.55327356
15,500.00	90.00	89.51	7,305.00	8.43	8,655.98	14,747,650.06	1,764,510.48	40.60578249	-104.55291330

Database:	DB_Jul2216dt_v14	Local Co-ordinate Reference:	Well Almont 5-02-04L
Company:	Confluence Resources	TVD Reference:	RKB=5001+24 @ 5025.00ft
Project:	Weld County, Colorado	MD Reference:	RKB=5001+24 @ 5025.00ft
Site:	Section 06-T07N-R64W	North Reference:	True
Well:	Almont 5-02-04L	Survey Calculation Method:	Minimum Curvature
Wellbore:	Original Hole		
Design:	plan1		

Planned Survey									
Measured Depth (ft)	Inclination (°)	Azimuth (°)	Vertical Depth (ft)	+N/-S (ft)	+E/-W (ft)	Map Northing (usft)	Map Easting (usft)	Latitude	Longitude
15,600.00	90.00	89.51	7,305.00	9.28	8,755.97	14,747,651.38	1,764,610.47	40.60578472	-104.55255303
15,700.00	90.00	89.51	7,305.00	10.12	8,855.97	14,747,652.70	1,764,710.46	40.60578694	-104.55219277
15,800.00	90.00	89.51	7,305.00	10.97	8,955.96	14,747,654.02	1,764,810.45	40.60578917	-104.55183251
15,900.00	90.00	89.51	7,305.00	11.82	9,055.96	14,747,655.34	1,764,910.45	40.60579139	-104.55147224
16,000.00	90.00	89.51	7,305.00	12.67	9,155.96	14,747,656.65	1,765,010.44	40.60579362	-104.55111198
16,100.00	90.00	89.51	7,305.00	13.51	9,255.95	14,747,657.97	1,765,110.43	40.60579584	-104.55075172
16,200.00	90.00	89.51	7,305.00	14.36	9,355.95	14,747,659.29	1,765,210.42	40.60579806	-104.55039146
16,300.00	90.00	89.51	7,305.00	15.21	9,455.95	14,747,660.61	1,765,310.41	40.60580028	-104.55003119
16,400.00	90.00	89.51	7,305.00	16.05	9,555.94	14,747,661.93	1,765,410.40	40.60580250	-104.54967093
16,500.00	90.00	89.51	7,305.00	16.90	9,655.94	14,747,663.25	1,765,510.39	40.60580472	-104.54931067
16,600.00	90.00	89.51	7,305.00	17.75	9,755.94	14,747,664.57	1,765,610.38	40.60580694	-104.54895040
16,700.00	90.00	89.51	7,305.00	18.59	9,855.93	14,747,665.89	1,765,710.37	40.60580915	-104.54859014
16,800.00	90.00	89.51	7,305.00	19.44	9,955.93	14,747,667.21	1,765,810.36	40.60581137	-104.54822988
16,900.00	90.00	89.51	7,305.00	20.29	10,055.92	14,747,668.53	1,765,910.36	40.60581358	-104.54786962
17,000.00	90.00	89.51	7,305.00	21.14	10,155.92	14,747,669.85	1,766,010.35	40.60581579	-104.54750935
17,100.00	90.00	89.51	7,305.00	21.98	10,255.92	14,747,671.17	1,766,110.34	40.60581800	-104.54714909
17,200.00	90.00	89.51	7,305.00	22.83	10,355.91	14,747,672.49	1,766,210.33	40.60582021	-104.54678883
17,295.62	90.00	89.51	7,305.00	23.64	10,451.53	14,747,673.75	1,766,305.94	40.60582232	-104.54644435
PBHL/TD 17295.62 MD/7305.00 TVD									

Design Targets									
Target Name	Dip Angle (°)	Dip Dir. (°)	TVD (ft)	+N/-S (ft)	+E/-W (ft)	Northing (usft)	Easting (usft)	Latitude	Longitude
- hit/miss target									
- Shape									
Almont 5-02-04L PBHL 1	0.00	0.00	7,305.00	23.64	10,451.53	14,747,673.75	1,766,305.94	40.60582232	-104.54644435
- plan hits target center									
- Point									
Almont 5-02-04L LP 129	0.00	0.00	7,305.00	-58.15	795.61	14,747,546.34	1,756,650.53	40.60560384	-104.58123226
- plan hits target center									
- Point									

Plan Annotations				
Measured Depth (ft)	Vertical Depth (ft)	Local Coordinates		Comment
		+N/-S (ft)	+E/-W (ft)	
3,000.00	3,000.00	0.00	0.00	KOP Begin 1°/100' build
3,367.61	3,367.36	-2.79	11.45	Begin 3.68° tangent
6,774.99	6,767.72	-54.53	223.70	Begin 10°/100' build/turn
7,639.35	7,305.00	-58.15	795.61	Begin 90.00° lateral
17,295.62	7,305.00	23.64	10,451.53	PBHL/TD 17295.62 MD/7305.00 TVD